

Network Working Group
Internet-Draft
Intended status: Experimental
Expires: Sep. 13, 2012

D. Liu
China Mobile
J. SONG
W. Luo
ZTE
March 13, 2012

PMIP Based DMM Approaches
draft-liu-dmm-pmip-based-approach-02

Abstract

This draft discusses a pmip based DMM solution
Requirements Language

The key words "MUST", "MUST NOT", "REQUIRED", "SHALL", "SHALL NOT",
"SHOULD", "SHOULD NOT", "RECOMMENDED", "MAY", and "OPTIONAL" in this
document are to be interpreted as described in [RFC 2119](#) [[RFC2119](#)].

Status of this Memo

This Internet-Draft is submitted in full conformance with the
provisions of [BCP 78](#) and [BCP 79](#).

Internet-Drafts are working documents of the Internet Engineering
Task Force (IETF). Note that other groups may also distribute
working documents as Internet-Drafts. The list of current Internet-
Drafts is at <http://datatracker.ietf.org/drafts/current/>.

Internet-Drafts are draft documents valid for a maximum of six months
and may be updated, replaced, or obsoleted by other documents at any
time. It is inappropriate to use Internet-Drafts as reference
material or to cite them other than as "work in progress."

This Internet-Draft will expire on August 27, 2012.

Copyright Notice

Copyright (c) 2012 IETF Trust and the persons identified as the
document authors. All rights reserved.

This document is subject to [BCP 78](#) and the IETF Trust's Legal
Provisions Relating to IETF Documents
(<http://trustee.ietf.org/license-info>) in effect on the date of
publication of this document. Please review these documents
carefully, as they describe your rights and restrictions with respect
to this document. Code Components extracted from this document must
include Simplified BSD License text as described in [Section 4.e](#) of

the Trust Legal Provisions and are provided without warranty as described in the Simplified BSD License.

Table of Contents

1.	Introduction	3
2.	Conventions Used in This Document	3
3.	Overview of Enhanced Proxy Mobile IPv6	3
3.1.	Enhanced PMIP Networking Schematic	4
3.2.	Functions of eMAG	5
3.3.	Functions of eLMA	5
4.	Overview of ePMIP Approaches	6
4.1.	Initial Registration	6
4.2.	Optimized Routing	7
4.3.	Handoff when Optimized Routing is Established	9
4.4.	Multiple eLMAs Consideration	11
4.4.1.	Determining eLMA Based on Configuration	12
4.4.2.	Determining eLMA Based on IPv6 Hop-by-Hop Options Header	13
4.4.3.	Determining eLMA Based on Interface Between eLMAs	14
5.	CN Considerations	14
5.1.	CN Which is not Registered with eLMA	15
5.2.	Routing Optimization Considerations when CN is Fixed Node	15
6.	Handoff between eMAG and MAG	17
7.	Considerations for Other Implementation	17
7.1.	One Alternative Implementation	17
7.2.	Optimized Routing Consideration	18
7.3.	Correspondent Node Consideration	19
7.4.	Location Management Consideration	20
8.	Security Consideration	21
9.	Difference with Localize Routing	21
10.	IANA Considerations	21
11.	References	21
11.1.	Normative References	21
11.2.	Informative References	21
12.	Normative References	21
	Authors' Addresses	21

1. Introduction

For supporting Distributed Mobility Management discussed in [I-D DMM], enhanced Proxy Mobile IPv6 (ePMIP) with two new logic functions is introduced in this draft . (1) Location Management Function (LMF), maintaining the mappings between IP addresses and location information of mobile nodes. (2) Distributed Anchoring Function (DAF), including Distributed Routing sub-Function (DRF) which enables optimized routing between mobile node and its correspondent node and Distributed Mobility sub-Function (DMF) which guarantees mobile node's mobility with minimal packet loss when optimized routing is established.

DAF can be deployed in RFC[5213] specified MAG to constitute an eMAG, and LMF can be deployed in RFC[5213] specified LMA to constitute an eLMA. This draft intends to provide approaches for eliminating non-optimized routing ([section 4.2](#)) which is identified as issues in [I-D DMM] and dealing with handoff with quite low packet loss when optimized routing is established ([section 4.3](#)). Besides, routing optimization is considered not only for communication between two mobile nodes, but also for communication between a mobile node and a fixed node ([section 5.2](#)). Further, an alternative implementation is also considered in [section 7](#).

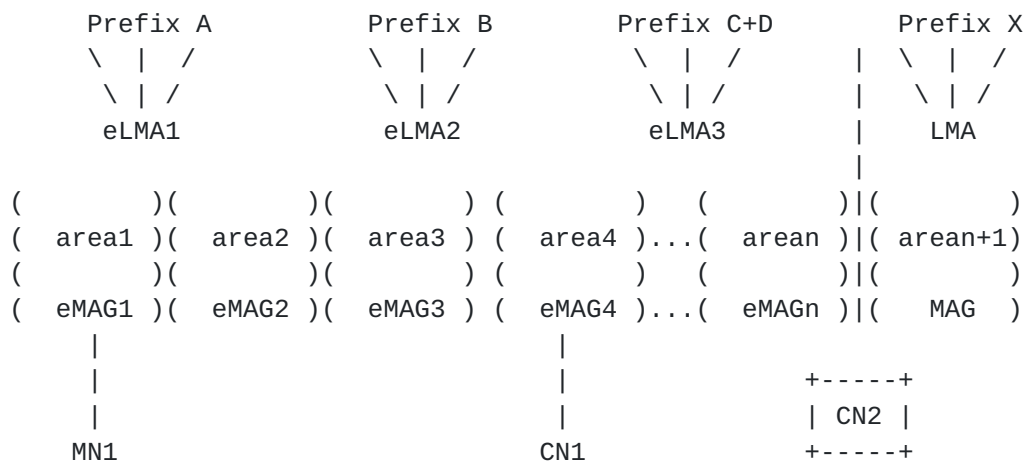
2. Conventions Used in This Document

The key words "MUST", "MUST NOT", "REQUIRED", "SHALL", "SHALL NOT", "SHOULD", "SHOULD NOT", "RECOMMENDED", "MAY", and "OPTIONAL" in this document are to be interpreted as described in [RFC-2119](#) [[RFC2119](#)].

3. Overview of Enhanced Proxy Mobile IPv6

For supporting Distributed Mobility Management discussed in [I-D DMM], enhanced Proxy Mobile IPv6 (ePMIP) with two new logic functions is introduced in this draft . (1) Location Management Function (LMF), maintaining the mappings between IP addresses and location information of mobile nodes (perhaps location information of fixed nodes are also included). (2) Distributed Anchoring Function (DAF), including Distributed Routing sub-Function (DRF) which enables optimized routing between mobile node and its correspondent node and Distributed Mobility sub-Function (DMF) which guarantees the mobile node's mobility when optimized routing is enabled.

3.1. Enhanced PMIP Networking Schematic



PMIP Domain with ePMIP deployed

Figure 1. RFC[5213] specified PMIP Domain with ePMIP deployed

The ePMIP can be implemented in many ways. One of those implementations is to deploy LMF in RFC[5213] specified Local Mobility Anchor (say legacy LMA) and to deploy DAF in RFC[5213] specified Mobile Access Gateway (say legacy MAG). Legacy LMA with LMF is called as enhanced local mobility anchor (eLMA), and legacy MAG with DAF is called as enhanced mobile access gateway (eMAG) respectively in the context of this draft.

Figure 1 illustrates a possible deployment for ePMIP, in which ePMIP is deployed within a PMIP domain. Mechanism specified by the ePMIP is enabled automatically for a mobile node when it attaches to an eMAG and without any of its awareness, therefore there is no additional requirement for a IPv6 mobile node. For fixed node considerations, please refer to [section 5.2](#).

Clear boundary between ePMIP and PMIP is not necessary, however, deploying ePMIP in a continuous area is preferred. Distributed mobility management approaches will be applied only when correspondent node of this mobile node also attaches to an entity which supports at least DRF (e.g. an eMAG), otherwise RFC[5213] specified PMIP approaches will be applied (for more details, refer to [section 5](#)). For supporting distributed mobility management approaches, new signalling messages among the LMFs and DAFs are also proposed in this draft.

For other implementation considerations, please refer to [section 7](#).

3.2. Functions of eMAG

The eMAG is fully compatible with legacy MAG with limited additional functions which are included in the distributed anchoring function specified in this draft. The content below in this subsection is general idea of the eMAG (DAF is a part of eMAG), including

- If eMAG decides to route traffic from its attached mobile node in an optimized way, it should invoke the Distributed Anchoring Function (DAF), more specifically, the Distributed Routing Function (DRF), to enable distributed mobility management approaches.
- Optimized routing specified in this draft is realized by a direct tunnel between two DRFs of mobile node and its correspondent node. DRF is responsible for maintaining location information of mobile node's correspondent node.
- If correspondent node also attaches to an eMAG and is registered with an eLMA, the direct tunnel is established between two eMAGs and tunnel endpoints are IP addresses of these two eMAGs (or CoAs of these two communicating peers). For other scenarios, e.g. the correspondent node is a fixed node, refer to [section 5](#).
- Optimized routing can only be enabled when location of correspondent node is determined. In case the location cannot be determined locally, DRF should initiate a query approach with a corresponding LMF. In case DRF is informed with the location (could be CN's new location in handoff scenario), it should update the location locally and forward any follow-up traffic based on that location. In case location of correspondent node cannot be determined by any means, common routing (e.g. PMIP routing) mechanism should be used.
- For supporting mobile node's handoff from previously attached eMAG (p-eMAG) to newly attached eMAG (n-eMAG), Distributed Mobility Function (DMF) of both eMAGs shall be enabled. The responsibility of n-DMF (n-eMAG) is to inform p-DMF (p-eMAG) with new location of that mobile node during handoff. The responsibility of p-DMF (p-eMAG) is to forward any received traffic which designated to that mobile node from DRF of correspondent node to n-DMF (n-eMAG) and to inform the DRF with new location for session continuity.

3.3. Functions of eLMA

The eLMA is fully compatible with legacy LMA with limited additional functions which are included in the Location Management Function specified in this draft. The content below in this subsection is general idea of the eLMA (LMF is a part of eLMA), including

- The responsibility of LMF is to determine the location of a specified mobile node (perhaps a fixed node, please refer to [section 5](#)) identified by its IP address (e.g. HoA) when it is queried by DRF. Interface between LMFs for determining the location information is proposed, for other alternatives, please refer to [section 4.4](#).
- The location information of a mobile node can be its CoA, and mechanisms for maintaining the mapping of mobile node's IP address and its location information (i.e. HoA-CoA correlation) can be based on Binding Cache Entry (BCE) which is specified in RFC[5213].

[4. Overview of ePMIP Approaches](#)

As described above, one implementation of ePMIP is to deploy LMF with legacy LMA to constitute an eLMA, and deploy DAF (including DRF and DMF sub-functions) with legacy MAG to constitute an eMAG. The sections including [section 4](#) to 6 assumes ePMIP adopts this implementation. Considerations for other alternative implementations, please refer to [section 7](#).

The overall assumptions for [section 4](#) are as following:

- The correspondent node is also a mobile node which attaches to an eMAG and is registered with an eLMA.

For other scenarios, such as correspondent node is a fixed station or not registered with an eLMA, please refer to [section 5](#).

[4.1. Initial Registration](#)

The initial registration procedure for ePMIP is triggered when a mobile node is initialized and attaches to an access link on which there is an eMAG. The mostly like is that the procedures for initial registration are identical with those specified in RFC[5213].

When determining the mobile node is authorized for the network-based mobility management service, eMAG sends PBU to a selected eLMA for the mobile node to complete the registration. General, an eLMA is always preferred for the mobile node, unless there has other constraints.

For example, If the mobile node's policy profile specified in RFC[5213] includes a filed of mobile node's IPv6 home network prefix(es) assigned to the mobile node's connected interface, and if the HNP(es) is(are) managed by a legacy LMA, the eMAG shall send a PBU to that LMA. In this case, the eMAG shall act as a legacy MAG for this mobile node which means the DAF function in this eMAG shall

be disabled for this mobile node.

When initial registration with eLMA is completed, the mobile node gets its HNP(es) and eLMA creates a binding cache entry for this mobile node to maintain the mapping of this mobile node's HNP(es) and Proxy-CoA.

4.2. Optimized Routing

As described in [section 3.2](#), ePMIP leverages a direct tunnel between two eMAGs which are implemented with DRF to realize an optimized routing between mobile node and its correspond node. The effect is similar with the MAG-MAG tunnel specified in [I-D Localized Routing for Proxy Mobile IPv6] but the principle is different, refer to [section 9](#) for more information.

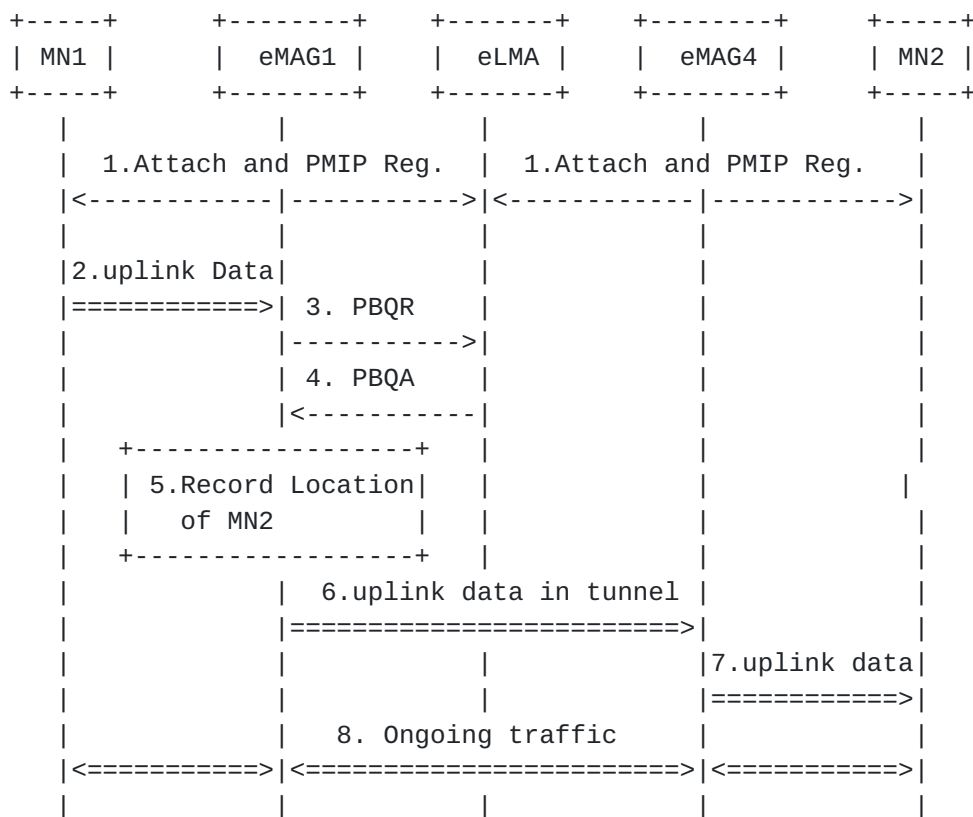


Figure 2. Optimized Routing

Figure 2 illustrates data delivery approaches of ePMIP for Distributed Mobility Management. Except for the general assumptions applied for [section 4](#), two more assumptions are also applied in this subsection as following:

- Mobile nodes (MN1 and MN2) attach to different eMAGs (eMAG1 and eMAG4) respectively.

- Mobile nodes are registered with a same eLMA.

For other scenarios, such as mobile nodes are registered with different eLMAs, refer to [section 4.4](#).

After the initial registrations, both mobile nodes get their HNPes. And eLMA maintains the mappings of HNP(es) and Proxy-CoAs of both mobile nodes in binding cache entries for them respectively .

The communication between MN1 and MN2 is initiated by MN1 sending IP packets to MN2 (i.e. uplink traffic). The destination IP address of the uplink traffic is set to HoA of MN2. Upon receiving the initial uplink traffic, eMAG1 should determine whether an optimized routing can be established by the support of DRF on it.

The eMAG1 (DRF) should determine whether it holds the location (i.e. CoA) of MN2 locally first. If not, eMAG1 (DRF) should determine the location by initiating a query (i.e. sending a PMIP Binding Query Request, PBQR) to eLMA (LMF) who holds the BCE for MN2. Based on HNP of MN2 provided in the PBQR, eLMA (LMF) could derive the location of MN2 (i.e. CoA) in a corresponding BCE and responses eMAG1 (DRF) with an answer (i.e. sending a PMIP Binding Query Answer, PBQA) carrying the location information. Upon receiving the PBQA, eMAG1 (DRF) records the location of MN2 locally.

Upon the location of MN2 is determined, eMAG1 (DRF) sets up its endpoint of a tunnel (e.g. IP in IP tunnel) to eMAG2 (DRF). And all follow-up uplink traffic will be encapsulated by eMAG1 (DRF) and sent to eMAG4 (DRF) in the established tunnel directly.

Before the optimized routing is established, eMAG1 could forward the first few packets of the uplink traffic to eLMA via bi-directional PMIP tunnel between the two as specified in RFC[5213]. In this case, the routing of the first few packets is non-optimized, and the delay of those packets may be a litter bit larger than the follow-up traffic. Another alternative is that eMAG1 buffers those packets until the optimized routing is set up. In this case, how to determine capacity of the buffer should be carefully considered.

Upon receiving encapsulated packet in the eMAG-eMAG tunnel, the eMAG4 (DRF) needs to decapsulate the packet and forwards the uplink traffic to MN2. As an alternative, eMAG4 (DRF) may parse the packet and record the location of MN1. The location of MN1 can be derived from the outer IP header of the encapsulated packet (i.e. the IP address of the tunnel entry point).

Upon receiving downlink traffic from MN2 to MN1, eMAG4 (DRF) should also set up its endpoint of a tunnel to eMAG1 (DRF) for the downlink

traffic when the location of MN1 is determined. At this moment, a bi-directional tunnel between two eMAGs has been established for all follow-up uplink and downlink traffic and an optimized routing for MN1 and MN2 is set.

4.3. Handoff when Optimaized Routing is Established

MN1 may change its point of attachment from previously attached eMAG (p-eMAG) to newly attached eMAG (n-eMAG) at any time after the optimized routing has been established as described in [section 4.2](#). The routing shall still be remained optimized after handoff.

The [I-D Localized Routing for Proxy Mobile IPv6] also specifies a method for re-establishing optimized routing after the handoff which leverages another new trigger from LMA to both MAGs involved. The consequence is to make the routing non-optimized during the handoff, and optimized again after the handoff. The handoff approaches specified here is much different from [I-D Localized Routing for Proxy Mobile IPv6] specified approaches and may provide less latency and jitter.

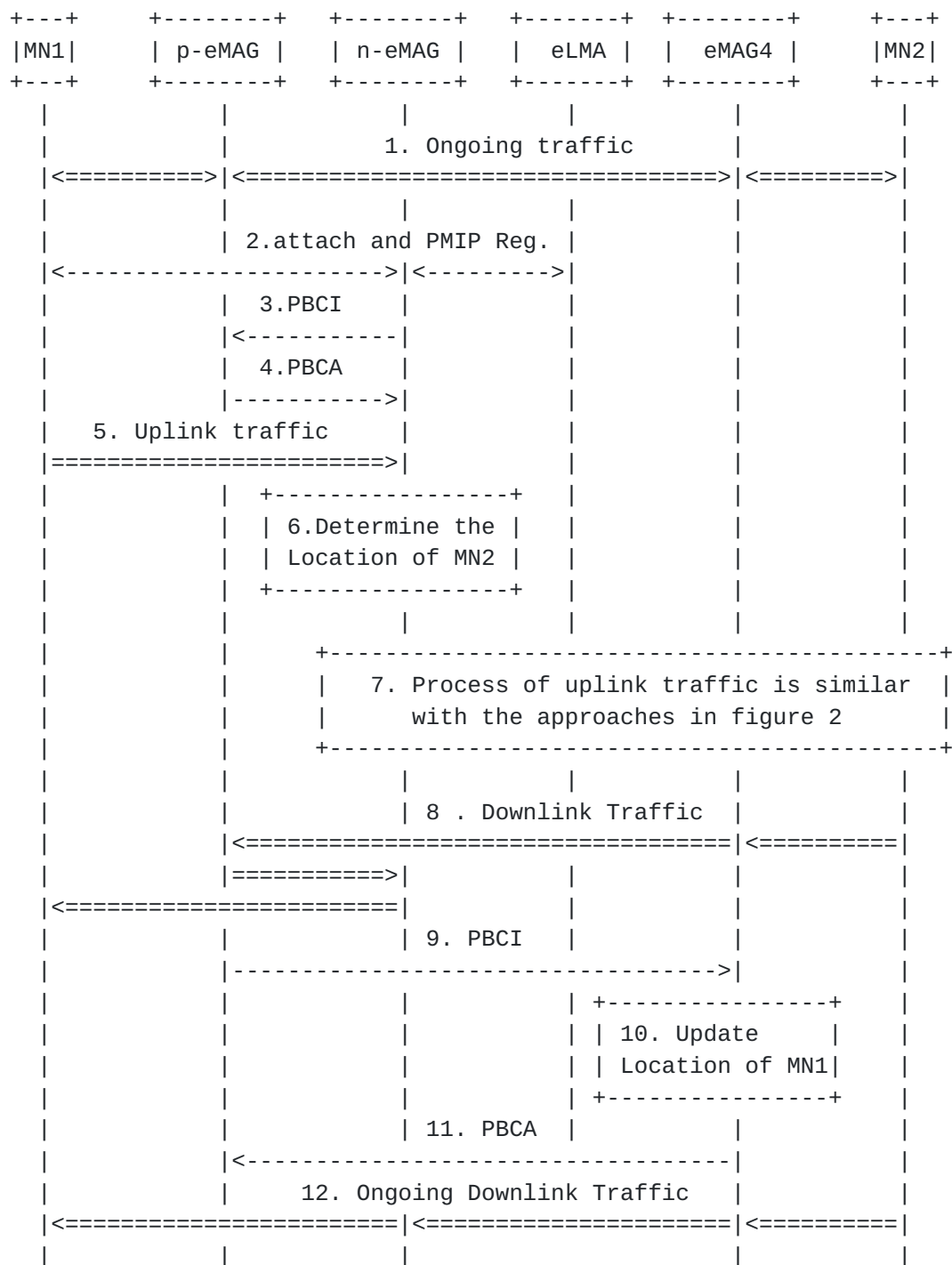


Figure 3. Handoff When Optimized Routing is Established

Figure 3 illustrates approaches for handoff of MN1 from p-eMAG to n-eMAG. During handoff, RFC[5213] specified procedures is performed for MN1 to maintain its HNP(es) unchanged. The n-eMAG on new access link, upon detecting MN1 on the link, assigns a new CoA for MN1 and generates a PBU message to eLMA for updating the BCE for MN1. In

sequence, eLMA responses a PBA message to n-eMAG with one additional new extension which includes the previous location of MN1 (i.e. CoA of MN1 assigned by p-eMAG).

Further, n-eMAG (DMF) initiates an inform message (i.e. PMIP Binding Change Inform, PBCI) to p-eMAG (DMF) with new location of MN1 (i.e. CoA assigned by n-eMAG) based on the acquired previous location of MN1. Sequencely, p-eMAG (DMF) updates the location of MN1 and responses with an acknowledge message (i.e. PMIP Binding Change Ack, PBCA) with all location information of the MN1's current correspondent nodes (in figure3, the current correspondent node is only MN2).

Upon uplink traffic arriving at n-eMAG instead of p-eMAG, n-eMAG (DRF) can derive the location of MN2 locally and forwards the traffic in an optimized way of routing (i.e. MN1->n-eMAG->eMAG4->MN2).

The most likely is that downlink traffic during the handoff is still forwarded by eMAG4 (DRF) to p-eMAG (DRF) before location of MN1 stored in eMAG4 (DRF) locally is updated (i.e. MN2->eMAG4->p-eMAG->MN1) and be discarded by p-eMAG (DRF).

For reducing packet loss, p-eMAG (DMF) is proposed to establish a directional tunnel to n-eMAG (DMF) and forward any received downlink traffic to n-eMAG (DMF) via the tunnel. Meanwhile, p-eMAG (DMF) is also proposed to update the location of MN1 stored in eMAG4 (DRF) by initiating a PBCI to eMAG4 (DRF) to indicate eMAG4 (DRF) to forward follow-up downlink traffic to n-eMAG (DRF) directly: MN2->eMAG4->n-eMAG->MN1.

4.4. Multiple eLMAs Consideration

As illustrated in figure 1, multiple eLMAs can be deployed. The most likely is that the mobile node and its correspondent node (i.e. another mobile node) are registered with different eLMAs. The approaches described in sub[section 4.2](#) and 4.3 simply assume both mobile nodes are registered with one same eLMA (the same assumption applied to [I-D Localized Routing for Proxy Mobile IPv6]), and this section considers multiple eLMAs.

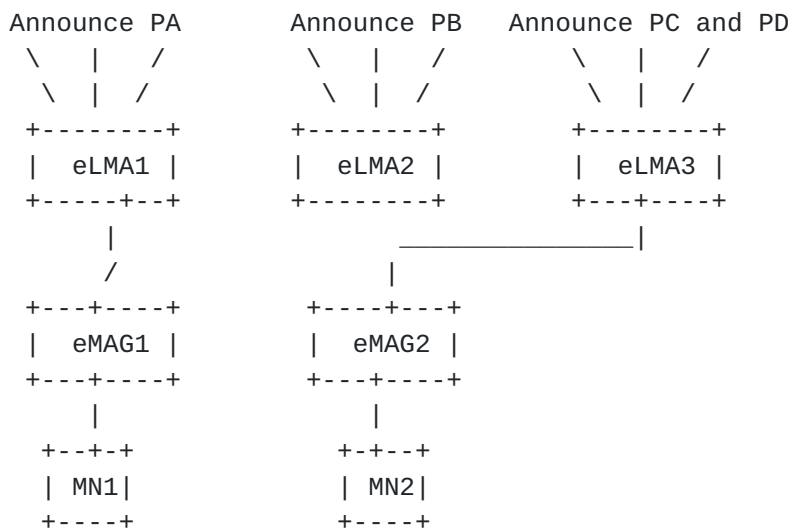


Figure 4. Mobile node and its Correspondent Node are Registered with Different eLMAs

As illustrated in figure 4, MN1 is registered with eLMA1 by eMAG1, and MN2 is registered with eLMA3 by eMAG2 respectively. Based on RFC[5213], only the LMA which is involved in PMIP registration for a mobile node holds this mobile node's Binding Cache Entry. Therefore, in figure 4, only eLMA1 holds the location information of MN1 and only eLMA3 holds the location information of MN2.

As described in [section 4.2](#), before establishing optimized routing for the traffic, eMAG1 shall determine the location of MN2. In case the location can not be determined locally, eMAG1 shall determine to which eLMA it should send a PBQR message.

4.4.1. Determining eLMA Based on Configuration

As illustrated in figure 4, each eLMA manages a set of IPv6 prefixes with which it uses to allocate home network prefixes or HoAs to the MNs registered to that eLMA. For example, eLMA1 announces prefixes PA to routing system and eLMA3 announces prefixes PC+PD.

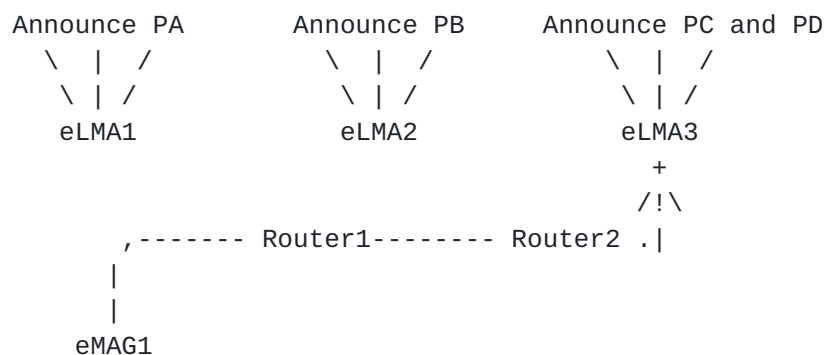
If eMAGs could be aware of the IPv6 prefixes configurations of each eLMA, e.g. from operator's management plane since they are in a same administrative domain. The eMAG (DRF) can determine the corresponding eLMA (LMF) to which it should send the PBQR, based on the destination IPv6 address of the traffic and the configured information.

For example, the destination IP address of the traffic from MN1 to MN2 is MN2's HoA. Based on configuration information, eMAG1 (DRF) can determine the HNP of MN2 is prefix PC and is managed by eLMA3.

Therefore, eMAG1 (DRF) can determine the eLMA3 (LMF) should be queried when it wants to determine the location of MN2.

This solution looks simple, but it depends on static configured information on every eMAGs. If configuration of a eLMA is changed (e.g. add a prefix PE into eLMA1's IPv6 prefix set), the most likely is that the configured information in all eMAGs in same administrative domain needs update. It seems like that this solution works well for a administrative domain with small number of eMAGs.

4.4.2. Determining eLMA Based on IPv6 Hop-by-Hop Options Header



eMAG1 initiates a query message (PBQR) carried in a IP packet whose destination IP address is HoA of MN2.

The packet will be intercepted, processed and terminated by eLMA3 who manages the prefix of the MN2's HoA based on the mechanism of the Hop-by-Hop Option Header.

Figure 5. Determining eLMA Based on Hop-by-Hop Options Header

When constructing a PBQR message, eMAG1 can use HoA of MN2 as destination IP address of this message and construct an appropriate IPv6 Hop-by-Hop Option Header as extension header. The HoA of MN2 is the destination IP address of the uplink traffic.

When IP packet which includes the PBQR message is sent into the routing system, standard routing mechanism ensures the packet can reach eLMA3 which manages the prefix of MN2's HoA. Depending on the mechanism of the Hop-by-Hop Option Header, each router including eLMA3 on the routing pass of this packet will intercept the packet and check the Hop-by-Hop Option Header.

Based on the indication carried by the options in Hop-by-Hop Option Header, eLMA3 determines whether the prefix of destination IP address belongs to its management. If it does, eLMA3 shall treat itself as destination of this message and let the LMF on it process the message.

It seems like that, all common routers on the routing pass of this packet will check the Hop-by-Hop Option Header and may cause some delay. Another disadvantage is that it will take relative longer time to make sure no location information of correspondent node can not be determined (refer to [section 5.1](#) for more details).

[4.4.3.](#) Determining eLMA Based on Interface Between eLMAs

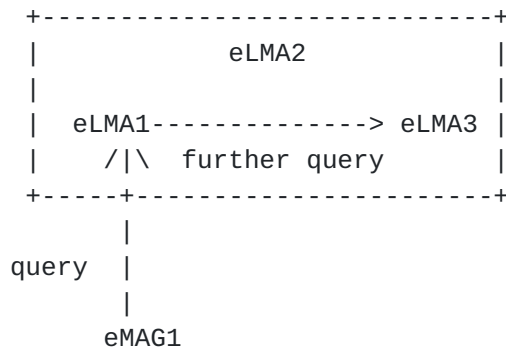


Figure 6. Determining eLMA Based on Interface Between eLMAs

Interface between eLMAs which are located in a same administrative domain is introduced for determining location information of a particular mobile node.

When determining location of correspondent node, eMAG1 (DRF), in figure 6, could simply send a PBRQ message to any random eLMA (LMF) it considers convenient (e.g. eLMA1). The most likely is that the eLMA (LMF) queried does not hold the relevant location information. But the eLMA (LMF) can determine which eLMA (LMF) holds the information (e.g. eLMA3).

For example, if IPv6 prefixes managed by each eLMA are aware of, the eLMA1 (LMF) can determine which eLMA (LMF) should be queried further and query it. It can be expected that the number of eLMA deployed in a administrative domain will not be large (as illustrated in figure 1), therefore, depending on configuration is applicable.

[5.](#) CN Considerations

The assumption of [section 4](#) is that the correspondent node is also a mobile mode and is registered with eLMA by eMAG. Other scenarios, such as correspondent node is a fixed node, or a mobile node but is not registered with eLMA, are considered in this section.

5.1. CN Which is not Registered with eLMA

This section considers scenario that the correspondent node (e.g. CN2 in figure 1) is a mobile node but not registered with eLMA. For example, CN2 is registered with a legacy LMA by attaching to a legacy MAG. For another example, CN2 just locates in common IPv6 environment.

When mobile node (MN1 in figure 1) initiates uplink traffic to correspondent node (CN2 in figure 1), eMAG1 (DRF) to which MN1 attaches should initiate a query for determining location of CN2 as described in [section 4.2](#).

According to [section 4.4.1](#), eMAG1 (DRF) can not determine to which eLMA (LMF) it should send the query message, because CN2's prefix is out of the management of any eLMA. In this case, eMAG1 (DRF) can make sure no location information can be determined.

According to [section 4.4.2](#), eMAG1 (DRF) should construct a query message and set message's destination to IP address of CN2. The query message will be routed to CN2 based on common routing mechanism and no response is expected. The eMAG1 (DRF) should wait for the response until the related timer is timeout. Before eMAG1 (DRF) can make sure no location information can be determined, one or more query message may be re-sent by eMAG1 (DRF). Thus, it will take a relative longer time to make sure no location information can be determined.

According to [section 4.4.3](#), eMAG1 (DRF) can send a query message to any one of those eLMAs (LMF) and the eLMA (LMF) queried performs the query among those eLMAs (LMF). In this case, eMAG1 (DRF) can make sure no location information can be determined.

As described above, the failed queries are expected and location information of CN2 can not be determined by eMAG1 (DRF). In this case, eMAG1 should behavior as a legacy MAG for this session and PMIP specified routing mechanism shall be applied for the uplink traffic (i.e. no optimized routing), e.g. MN->eMAG1->E-LMA->common router->CN.

Of course, if the correspondent node itself is a fixed node, same rules described above are also applicable.

5.2. Routing Optimization Considerations when CN is Fixed Node

As described above, if correspondent node is a fixed node, eMAG1 will behavior as a legacy MAG and no optimized routing is enabled.

Most of correspondent nodes which are fixed nodes are deployed in a centralized manner in most deployment, e.g. CDN/IDC/Web Servers and etc. Those fixed nodes are generally converged by a couple of access routers, although the topology within those fixed nodes may be very complicate, to access operator's IP bearer network which is illustrated in figure 7. If mechanism which providing optimized routing cannot be applied when correspondent node are fixed nodes of these kind, effect of this mechanism will be very limited.

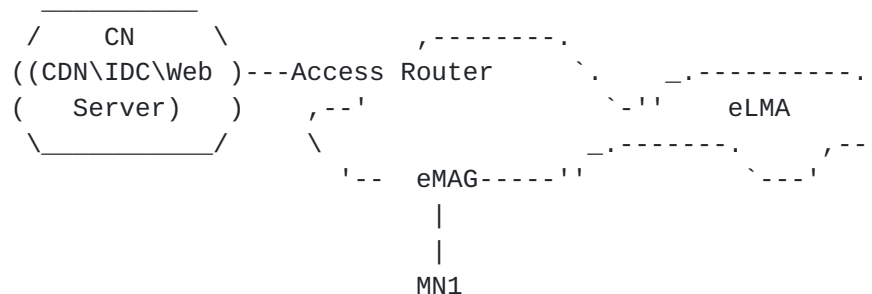


Figure7. Correspondent Nodes are Fixed Nodes Cause Non-optimized Routing

Refer to figure 7, it seems like that non-optimized routing (e.g. between MN1 and CDN) will be a problem for this deployment as discussed in [I-D DMM Problem Statement]. For purpose of eliminating non-optimized routing, one implementation is to replace those common access routers in figure 7 with routers which are implemented with Distributed Routing Function (DRF). No Distributed Mobility Function (DMF) is needed, since nodes attached are all fixed nodes.

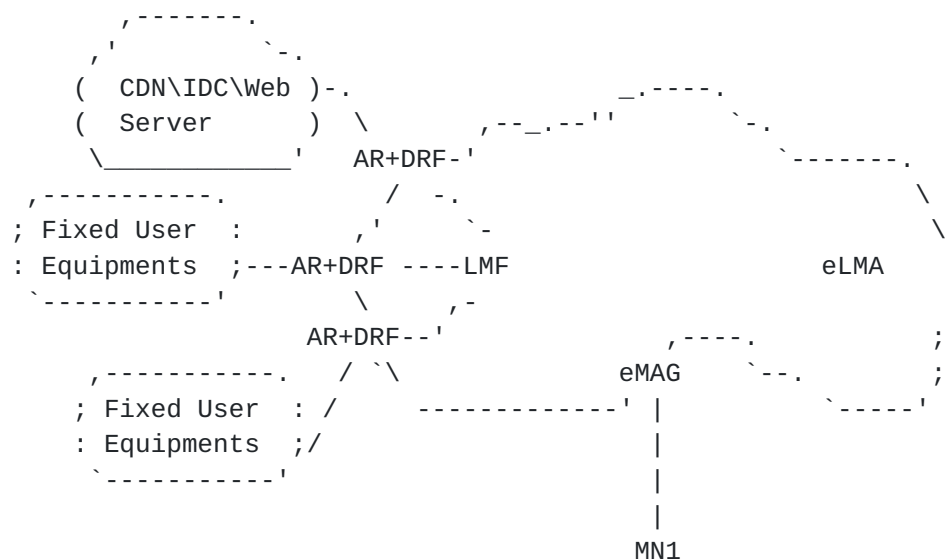


Figure 8. Applying Optimized Routing when Correspondent Nodes are fixed nodes

Additionally, one more LMF needs deployed as illustrated in figure 8. The responsibility of that LMF is to response any received PBRQ message with location of queried fixed node (e.g. IP address of one of those AR+DRF). Method specified in [section 4.2.2](#) may not be applicable, because PBRQ will be routed to one of those AR+DRF directly. No response will be expected, except that the AR+DRF is also co-located with a LMF.

6. Handoff between eMAG and MAG

As illustrated in figure 1, ePMIP is deployed in PMIP domain (no clear boundary), and belongs to a same administrative domain, e.g. a same operator. The mobile node which is initial registered with eLMA by attaching a eMAG may handoff to a legacy MAG and vice versa. By supporting the handoff between eMAG and MAG, ePMIP can be deployed in manner of incremental when assuming PMIP is well deployed.

As described above, eLMA is a legacy LMA implemented with LMF, and eMAG is a legacy MAG implemented DAF (DRF+DMF). When a mobile node which attaches to an eMAG handoff to a legacy MAG, the legacy MAG will perform PMIP registration to the eLMA and establish a bi-directional tunnel with the eLMA. In this case, PMIP routing mechanism will be applied (i.e. no routing optimization). On the other hand, when a mobile node which attaches to a legacy MAG handoff to an eMAG, the eMAG will perform PMIP registration to the legacy LMA and establish a bi-directional tunnel with the legacy LMA. In this case, PMIP routing mechanism will also be applied (i.e. no routing optimization).

7. Considerations for Other Implementation

As described in [section 3.1](#), ePMIP can be implemented in many ways. [Section 3.1](#) also indicates one of those implementations, i.e. deploying LMF in legacy LMA, and DAF in legacy MAG. This section considers one alternative implementation.

7.1. One Alternative Implementation

One alternative implementation is to deploy DAF in legacy LMA, and deploy LMF independently. When multiple LMFs are deployed, interfaces between those LMFs are necessary as illustrated in figure 10.

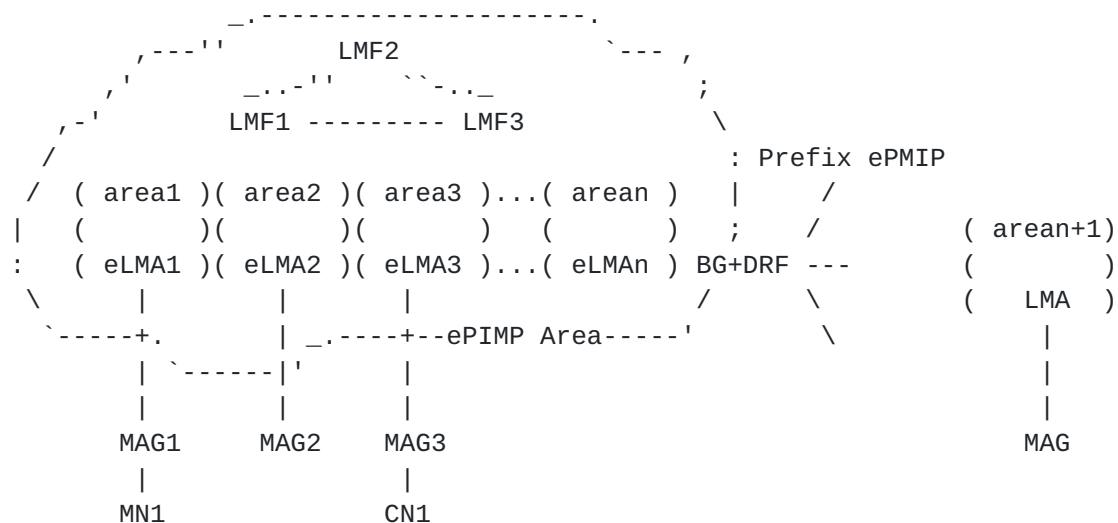


Figure 10. One Alternative Implementation of ePMIP

For routing consideration, a clear boundary seems necessary if ePMIP takes this kind of implementation. A set of IPv6 prefixes which are used for allocating HNP(es) or HoA(s) to mobile nodes should be assigned to ePMIP area and each LMA manages part of them. The eLMAs don't announce any IPv6 prefix to routing system. Instead, a border gateway implemented with DRF (BG+DRF) which is located at the boundary of this ePMIP area announces those set IPv6 prefix(es) to outside as illustrated in figure 10.

The node inside ePMIP area could be a mobile node or a fixed node. When a correspondent node located outside of ePMIP area sends IP traffic to a node located inside ePMIP area, traffic will be routed to BG+DRF which announces the management of the prefix of the traffic's destination IP address.

7.2. Optimized Routing Consideration

Consider that a mobile node (MN1) is initiated in ePMIP area and attaches to a legacy MAG, RFC[5213] specified PMIP registration procedures will be performed. The MAG will select a local mobility anchor (e.g. eLMA1) for MN1 and send a PBU to it. Note that, the LMA selected by the MAG is actually an eLMA. MAGs cannot tell the distinguishes between LMAs and eLMAs.

After successful PMIP registration, MN1 acquires its HNP(es) and eLMA1 manages a binding cache entry for MN1 as specified in RFC[5213]. Further, eLMA1 (DRF) has to inform a corresponding LMF with the HNP(es) and location information of MN1 (i.e. IP address of eLMA1 itself). LMF will manage the mapping between HNP(es) and location. How to determine which LMF the eLMA1 (DRF) should inform, refer to [section 7.4](#).

Consider that correspondent node (CN1) of MN1 is also a mobile node and is located in same ePMIP area (refer to [section 7.3](#) for other scenarios).

Upon receiving uplink traffic from MN1 to CN1 via the bi-directional PMIP tunnel, eLMA1 (DRF) should determine whether it holds location information of CN1 locally. If not, a corresponding LMF should be queried by eLMA1 (DRF), and the required location (e.g. IP address of eLMA3) should be stored by eLMA1 (DRF) locally. Upon determining the location, eLMA1 (DRF) sets up a tunnel to eLMA3 (DRF) by using the location of CN1 as tunnel endpoint, and forwards uplink traffic to eLMA3 (DRF) directly.

Upon movement of MN1, a PMIP handoff from pMAG to nMAG will be triggered. RFC[6097] provides a mechanism for LMA discovery, and requires nMAG of a mobile node should discovery a same LMA with which the pMAG has discovered for that mobile node. The nMAG in this draft does not have to discover a same eLMA (i.e. eLMA1) but a best eLMA (e.g. eLMA2) for MN1 and performs PMIP registration. The implementation can take any method specified in RFC[6097] for discovering the best eLMA.

The eLMA2 (DRF) should update LMF with new location information of MN1 (e.g. IP address of eLMA2 itself) and eLMA2 (DMF) should also inform eLMA1 with the new location. The approaches are quite similar with those described in [section 4.3](#).

[7.3](#). Correspondent Node Consideration

Consider that correspondent node is located outside of ePMIP area (could be a mobile node or a fixed node). In this case, the prefixes of IP address of CN are not managed by ePMIP. Actually, the set of IPv6 prefixes which are assigned to ePMIP can be configured in LMF. In this case, when eLMA1 (DRF) queries LMF CN's location, the LMF will response with IP address of BG+DRF. The routing will be: MN1 <-> MAG <-> eLMA <-> BG+DRF <-> CN.

Consider that the correspondent node is a fixed node and is located inside ePMIP area. It seems like that the traffic from CN to MN1 cannot be routed correctly, because CN doesn't have any idea of MN1's location.

A simple approach is to let BG+DRF also announce the set of prefixes which are assigned to ePMIP to routing system inside ePMIP area. In this case, traffic will be routed to BG+DRF and further forwarded by BG+DRF. But it seems that the BG+DRF could be overloaded easily and routing will be no-optimal.

Another approach is to deploy multiple routers implemented with DRF inside ePMIP area and let them announce same set of prefix(es) which are assigned to ePMIP to routing system (as illustrated in figure 11). In this case, the anycast mechanism is used for attract traffic from CN and optimized routing is enabled: CN <-> Access Router <-> Router+DRF <-> eLMA <-> MAG <-> MN

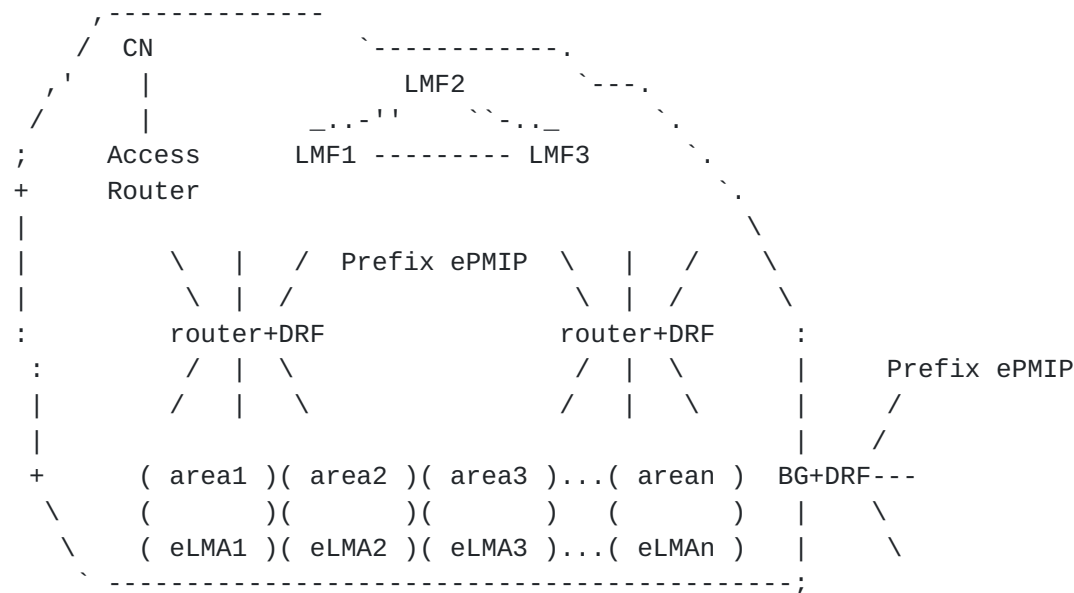


Figure 11. Anycast Mechanism for Attracting Traffic From CN

7.4. Location Management Consideration

As illustrated in figure 11, multiple LMFs can be deployed in ePMIP area. When a mobile node is registered with an eLMA, the eLMA (DRF) needs to update location of this mobile node in a corresponding LMF. And when eLMA (DRF) want to determine location information of a mobile node, it need to query a corresponding LMF.

Interface between those LMFs is proposed in this draft. One preferred LMF can be configured in every specific eLMAs (DRF). If eLMA (DRF) need to update or query location of a mobile node (or correspondent node), it can always sends a corresponding message to that preferred LMF. Upon receiving the message, that preferred LMF should determine which LMF is responsible for managing the location for that mobile (or correspondent node) and relay the message to that determined LMF.

Many methods can be used by preferred LMF for determining to which LMF it should relay the message. For example, Hash algorithm (hashing the HNP(es)), DHT algorithm and etc.

8. Security Consideration

9. Difference with Localize Routing

10. IANA Considerations

This document makes no request of IANA.

Note to RFC Editor: this section may be removed on publication as an RFC.

11. References

11.1. Normative References

[RFC5213](#)

[RFC6097](#) Local Mobility Anchor (LMA) Discovery for Proxy Mobile IPv6

11.2. Informative References

12. Normative References

[RFC2119] Bradner, S., "Key words for use in RFCs to Indicate Requirement Levels", [BCP 14](#), [RFC 2119](#), March 1997.

Authors' Addresses

Dapeng Liu
China Mobile

Jun Song
ZTE
No.68,Zijinghua Road,
Nanjing, Yuhuatai District 210012
China

Phone:
Fax:
Email: song.jun@zte.com.cn
URI:

Wen Luo
ZTE
No.68,Zijinghua Road
Nanjing, Yuhuatai District 210012
China

Phone:
Fax:
Email: luo.wen@zte.com.cn
URI: