

6TiSCH
Internet-Draft
Intended status: Standards Track
Expires: April 28, 2015

P. Thubert, Ed.
Cisco
T. Watteyne
Linear Technology
RA. Assimi
Centro
October 27, 2014

**An Architecture for IPv6 over the TSCH mode of IEEE 802.15.4e
draft-ietf-6tisch-architecture-04**

Abstract

This document presents an architecture for an IPv6 Multi-Link subnet that is composed of a high speed powered backbone and a number of IEEE802.15.4e TSCH wireless networks attached and synchronized by Backbone Routers. The TSCH schedule can be static or dynamic. 6TiSCH defines mechanisms to establish and maintain the routing and scheduling operations in a centralized, distributed, or mixed fashion. Backbone Routers perform proxy Neighbor Discovery operations over the backbone on behalf of the wireless devices, so they can share a same subnet and appear to be connected to the same backbone as classical devices

Requirements Language

The key words "MUST", "MUST NOT", "REQUIRED", "SHALL", "SHALL NOT", "SHOULD", "SHOULD NOT", "RECOMMENDED", "NOT RECOMMENDED", "MAY", and "OPTIONAL" in this document are to be interpreted as described in [RFC 2119](#) [RFC2119].

Status of this Memo

This Internet-Draft is submitted in full conformance with the provisions of [BCP 78](#) and [BCP 79](#).

Internet-Drafts are working documents of the Internet Engineering Task Force (IETF). Note that other groups may also distribute working documents as Internet-Drafts. The list of current Internet-Drafts is at <http://datatracker.ietf.org/drafts/current/>.

Internet-Drafts are draft documents valid for a maximum of six months and may be updated, replaced, or obsoleted by other documents at any time. It is inappropriate to use Internet-Drafts as reference material or to cite them other than as "work in progress."

This Internet-Draft will expire on April 28, 2015.

Copyright Notice

Copyright (c) 2014 IETF Trust and the persons identified as the document authors. All rights reserved.

This document is subject to [BCP 78](#) and the IETF Trust's Legal Provisions Relating to IETF Documents (<http://trustee.ietf.org/license-info>) in effect on the date of publication of this document. Please review these documents carefully, as they describe your rights and restrictions with respect to this document. Code Components extracted from this document must include Simplified BSD License text as described in Section 4.e of the [Trust Legal Provisions](#) and are provided without warranty as described in the Simplified BSD License.

Table of Contents

1.	Introduction	3
2.	Terminology	3
3.	Applications and Goals	4
4.	Overview and Scope	5
5.	6LoWPAN (and RPL)	8
5.1.	RPL Leaf Support in 6LoWPAN ND	9
5.2.	registration Failures Due to Movement	9
5.3.	Proxy registration	9
5.4.	Target Registration	10
5.5.	RPL root vs. 6LBR	10
5.6.	Securing the Registration	11
6.	Communication Paradigms and Interaction Models	11
7.	TSCH and 6top	12
7.1.	6top	12
7.2.	6top and RPL Objective Function operations	13
7.3.	Network Synchronization	14
7.4.	SlotFrames and Priorities	15
7.5.	Distributing the reservation of cells	16
8.	Schedule Management Mechanisms	18
8.1.	Minimal Static Scheduling	18
8.2.	Neighbor-to-neighbor Scheduling	19
8.3.	Remote Monitoring and Schedule Management	19
8.4.	Hop-by-hop Scheduling	20
9.	Forwarding Models	20
9.1.	Track Forwarding	21
9.1.1.	Transport Mode	22
9.1.2.	Tunnel Mode	22
9.1.3.	Tunnel Metadata	23
9.2.	Fragment Forwarding	24
9.3.	IPv6 Forwarding	25
10.	Centralized vs. Distributed Routing	25
10.1.	Packet Marking and Handling	26
11.	IANA Considerations	26
12.	Security Considerations	26
13.	Contributors	27

14.	Acknowledgements	27
15.	References	27
15.1.	Normative References	27
15.2.	Informative References	29
15.3.	External Informative References	30

Authors' Addresses	31
------------------------------	--------------------

1. Introduction

The emergence of radio technology enabled a large variety of new types of devices to be interconnected, at a very low marginal cost compared to wire, at any range from Near Field to interplanetary distances, and in circumstances where wiring would be less than practical, for instance rotating devices.

At the same time, a new breed of Time Sensitive Networks is being developed to enable traffic that is highly sensitive to jitter and quite sensitive to latency. Such traffic is not limited to voice and video, but also includes command and control operations such as found in industrial automation or in-vehicle sensors and actuators.

At IEEE802.1, the "Audio/Video Task Group", was renamed TSN for Time Sensitive Networking to address Deterministic Ethernet. The IEEE802.15.4 Medium access Control (MAC) has evolved with IEEE802.15.4e that provides in particular the timeSlotted Channel Hopping (TSCH) mode for industrial-type applications.

Though at a different time scale, both standards provide Deterministic capabilities to the point that a packet that pertains to a certain flow crosses the network from node to node following a very precise schedule, as a train that leaves intermediate stations at precise times along its path. With TSCH, time is formatted into timeSlots, and an individual cell is allocated to unicast or broadcast communication at the MAC level. The time slotted operation reduces collisions, saves energy, and enables to more closely engineer the network for deterministic properties. The channel hopping aspect is a simple and efficient technique to combat multipath fading and external interference (for example by WiFi emitters).

This document presents an architecture for an IPv6 Multi-Link subnet that is composed of a high speed powered backbone and a number of IEEE802.15.4e TSCH wireless networks attached and synchronized by backbone routers. Route Computation may be achieved in a centralized fashion by a Path Computation Element (PCE), in a distributed fashion using the Routing Protocol for Low Power and Lossy Networks (RPL), or in a mixed mode. The Backbone Routers perform proxy IPv6 neighbor Discovery (ND) operations over the backbone on behalf of the wireless devices, so they can share a same IPv6 subnet and appear to be connected to the same backbone as classical devices. timeSlots and other device resources are managed by an abstract Network Management Entity (NME) that may cooperate with the PCE in order to minimize the interaction with and the load on the constrained device.

2. Terminology

Thubert, Watteyne & AssimExpires April 28, 2015

[Page 3]

Readers are expected to be familiar with all the terms and concepts that are discussed in "neighbor Discovery for IP version 6" [[RFC4861](#)], "IPv6 over Low-Power Wireless Personal Area Networks (6LoWPANs): Overview, Assumptions, Problem Statement, and Goals" [[RFC4919](#)], neighbor Discovery Optimization for Low-power and Lossy Networks [[RFC6775](#)] and "Multi-link Subnet Support in IPv6" [I-D.ietf-ipv6-multilink-subnets].

Readers may benefit from reading the "RPL: IPv6 Routing Protocol for Low-Power and Lossy Networks" [[RFC6550](#)] specification; "Multi-Link Subnet Issues" [[RFC4903](#)]; "Mobility Support in IPv6" [[RFC6275](#)]; "neighbor Discovery Proxies (ND Proxy)" [[RFC4389](#)]; "IPv6 Stateless Address Autoconfiguration" [[RFC4862](#)]; "FCFS SAVI: First-Come, First-Served Source Address Validation Improvement for Locally Assigned IPv6 Addresses" [[RFC6620](#)]; and "Optimistic Duplicate Address Detection" [[RFC4429](#)] prior to this specification for a clear understanding of the art in ND-proxying and binding.

The draft uses terminology defined or referenced in [I-D.ietf-6tisch-terminology], [[I-D.chakrabarti-nordmark-6man-efficient-nd](#)], [I-D.ietf-roll-rpl-industrial-applicability], [[RFC5191](#)] and [[RFC4080](#)].

The draft also conforms to the terms and models described in [[RFC3444](#)] and [[RFC5889](#)] and uses the vocabulary and the concepts defined in [[RFC4291](#)] for the IPv6 Architecture.

3. Applications and Goals

The architecture derives from existing industrial standards for Process Control by its focus on Deterministic Networking, in particular with the use of the IEEE802.15.4e TSCH MAC [[IEEE802154e](#)] and the centralized PCE. This approach leverages the TSCH MAC benefits for high reliability against interference, low-power consumption on deterministic traffic, and its Traffic Engineering capabilities. Deterministic Networking applies in particular to open and closed control loops, as well as supervisory control flows and management.

An incremental set of industrial requirements are addressed with the addition of an autonomic and distributed routing operation based on RPL. These use cases include plant setup and decommissioning, as well as monitoring of lots of lesser importance measurements such as corrosion and events. RPL also enables mobile use cases such as mobile workers and cranes.

A Backbone Router is included in order to scale the factory plant subnet to address large deployments, with proxy ND and time synchronization over a high speed backbone.

4. Overview and Scope

```

      +-----+
      |               External Network              |
      |               +-----+                     |
      |               | NME |                     |
      |               +-----+                     |
      |               | LLN Border router          |
      |               +-----+                     |
      |               o   o   o                   |
o       o   o   o   o                           |
      |   o   o LLN   o   o   o                 |
      |   o   o   o           o                 |
      |               o                         |

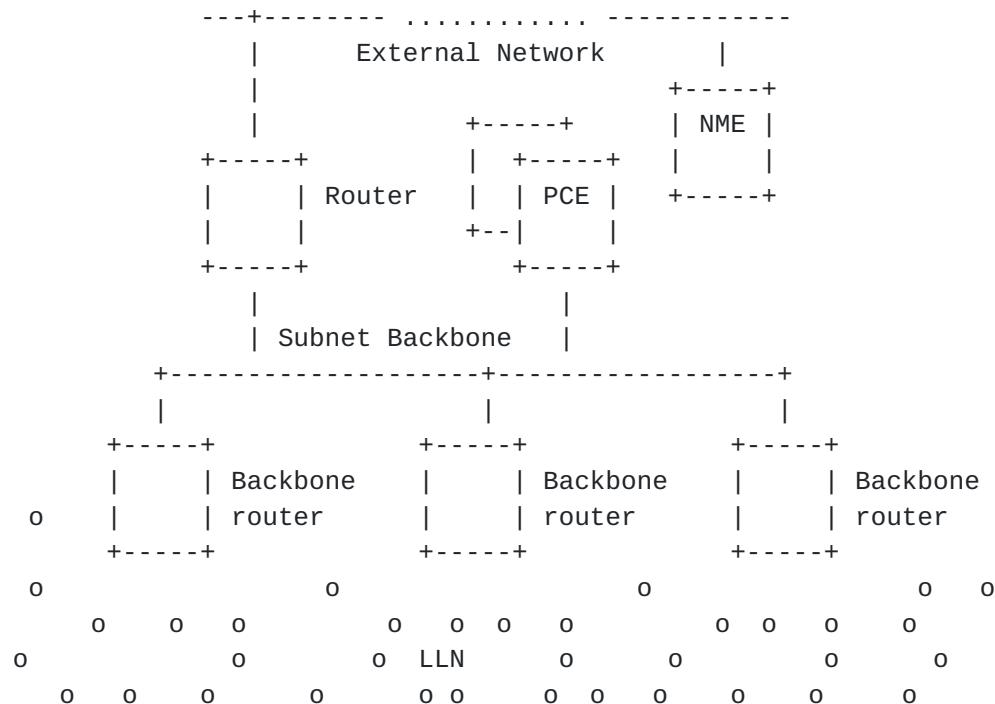
```

RPL forms Destination Oriented Directed Acyclic Graphs (DODAGs) within Instances of the protocol, each Instance being associated with an Objective Function (OF) to form a routing topology. A particular LLN device, the LLN Border Router (LBR), acts as RPL root, 6LoWPAN HC terminator, and LLN Border Router (LBR) to the outside. The LBR is usually powered. More on RPL Instances can be found in [section 3.1](#) of RPL [[RFC6550](#)], in particular "3.1.2. RPL Identifiers" and "3.1.3. Instances, DODAGs, and DODAG Versions".

An extended configuration of the subnet comprises multiple LLNs. The LLNs are interconnected and synchronized over a backbone, that can be wired or wireless. The backbone can be a classical IPv6 network, with neighbor Discovery operating as defined in [RFC4861] and [RFC4862]. The backbone can also support Efficiency-aware IPv6 neighbor Discovery Optimizations [I-D.chakrabarti-nordmark-6man-efficient-nd] in mixed mode as described in [I-D.thubert-6lowpan-backbone-router].

Security is often handled at layer 2 and Layer 4. Authentication during the join process can be handled by the Protocol for Carrying Authentication for Network access (PANA) [RFC5191].

The LLN devices are time-synchronized at the MAC level. The LBR that serves as time source is a RPL parent in a particular RPL Instance that serves for time synchronization; this way, the time synchronization starts at the RPL root and follows the RPL DODAGs with no timing loop.

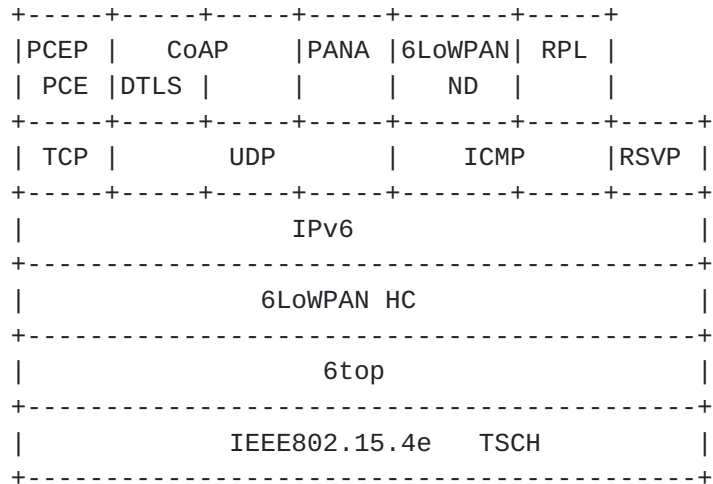


In the extended configuration, the functionality of the LBR is enhanced to that of Backbone Router (BBR). A BBR is an LBR, but also an Energy Aware Default Router (NEAR) as defined in [I-D.chakrabarti-nordmark-6man-efficient-nd]. The BBR performs ND proxy operations between the registered devices and the classical ND devices that are located over the backbone. 6TiSCH BBRs synchronize with one another over the backbone, so as to ensure that the multiple LLNs that form the IPv6 subnet stay tightly synchronized. If the Backbone is

Deterministic (such as defined by the Time Sensitive Networking WG at IEEE), then the Backbone Router ensures that the end-to-end

deterministic behavior is maintained between the LLN and the backbone.

The main architectural blocks are arranged as follows:



RPL is the routing protocol of choice for LLNs. (TBD RPL) whether there is a need to define a 6TiSCH OF.

(tbd NME) COMAN is working on network Management for LLN. They are considering the Open Mobile Alliance (OMA) Lightweight M2M (LWM2M) Object system. This standard includes DTLS, CoAP (core plus Block and Observe patterns), SenML and CoAP Resource Directory.

(tbd PCE) need to work with PCE WG to define flows to PCE, and define how to accommodate PCE routes and reservation. Will probably look a lot like GMPLS.

(tbd PANA) There is a debate whether PANA (layer 3) or IEEE802.1x (layer 2) should be used in the join process. There is also a debate whether the node should be able to send any unprotected packet on the medium. Regardless, the security model must ensure that, prior to a join process, packets from a untrusted device must be controlled in volume and in reachability.

(tbd Backbone Router) need to work with 6MAN to define ND proxy. Also need BBR sync sync between deterministic Ethernet and 6TiSCH LLNs.

IEEE802.1TSN: external, maintain consistency. See also AVnu.

IEEE802.15.4: external, (tbd need updates?).

ISA100.20 Common Network Management: external, maintain consistency.

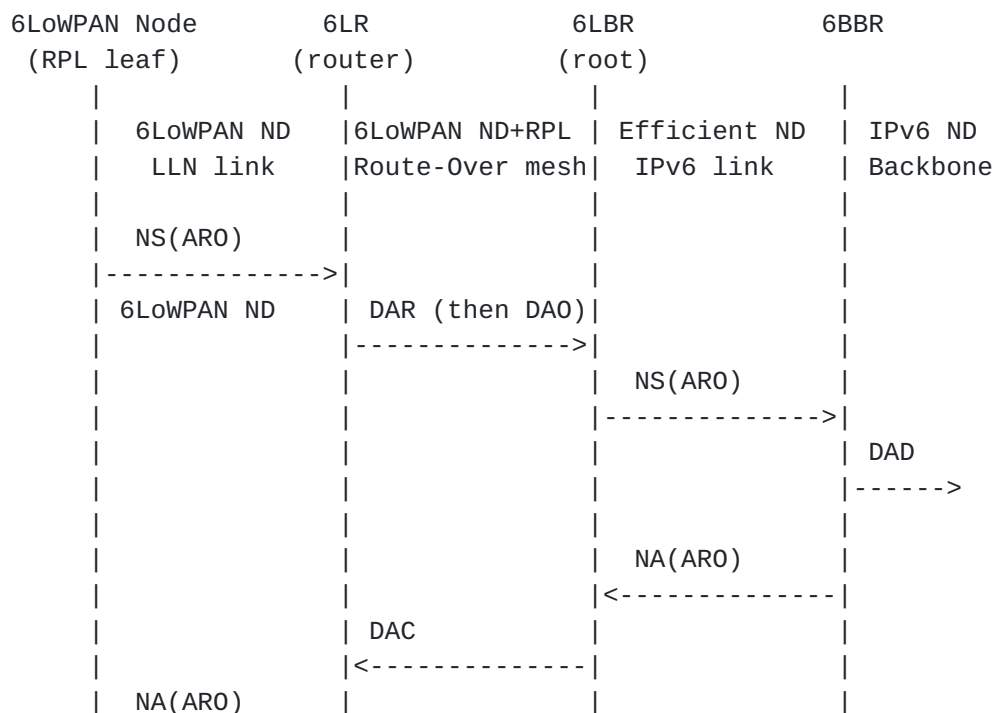
The 6TiSCH Operation sublayer (6top) [[I-D.wang-6tisch-6top-sublayer](#)]

is an Logical Link Control (LLC) or a portion thereof that provides the abstraction of an IP link over a TSCH MAC.

5. 6LoWPAN (and RPL)

This architecture expects that a 6LoWPAN node can connect as a leaf to a RPL network, where the leaf support is the minimal functionality to connect as a host to a RPL network without the need to participate to the full routing protocol. The support of leaf can be implemented as a minor increment to 6LoWPAN ND, with the additional capability to carry a sequence number that is used to track the movements of the device, and optionally some information about the RPL topology that this device will join.

The root of the RPL topology is logically separated from the 6BBR that is used to connect the RPL topology to the backbone. The RPL root can use Efficient ND as the interface to register an LLN node in its topology to the 6BBR for whatever operation the 6BBR performs, such as ND proxy operations, or injection in a routing protocol. It results that, as illustrated in Figure 4, the periodic signaling could start at the leaf node with 6LoWPAN ND, then would be carried over RPL to the RPL root, and then with Efficient-ND to the 6BBR. Efficient ND being an adaptation of 6LoWPAN ND, it makes sense to keep those two homogeneous in the way they use the source and the target addresses in the Neighbor Solicitation (NS) messages for registration, as well as in the options that they use for that process.



|<-----| | |

Thubert, Watteyne & AssimExpires April 28, 2015

[Page 8]

As the network builds up, a node should start as a leaf to join the RPL network, and may later turn into both a RPL-capable router and a 6LR, so as to accept leaf nodes to recursively join the network.

5.1. RPL Leaf Support in 6LoWPAN ND

RPL needs a set of information in order to advertise a leaf node through a DAO message and establish reachability.

At the bare minimum the leaf device must provide a sequence number that matches the RPL specification in [section 7](#). [Section 4.1](#) of [I-D.chakrabarti-nordmark-6man-efficient-nd], on the Address Registration Option (ARO), already incorporates that addition with a new field in the option called the Transaction ID.

If for some reason the node is aware of RPL topologies, then providing the RPL InstanceID for the instances to which the node wishes to participate would be a welcome addition. In the absence of such information, the RPL router must infer the proper instanceID from external rules and policies.

On the backbone, the InstanceID is expected to be mapped onto a VLANID. Neither WiFi nor Efficient ND do provide a mapping to VLANIDs, and it is unclear, when a wireless node attaches to a backbone where VLANs are defined, which VLAN the wireless device attaches to. Considering that a VLAN is effectively the IP link on the backbone, adding the InstanceID to both specifications could be a welcome addition.

5.2. registration Failures Due to Movement

Registration to the 6LBR through DAR/DAC messages [[RFC6775](#)] may percolate slowly through an LLN mesh, and it might happen that in the meantime, the 6LoWPAN node moves and registers somewhere else. Both RPL and 6LoWPAN ND lack the capability to indicate that the same node is registered elsewhere, so as to invalidate states down the deprecated path.

In its current expression and functionality, 6LoWPAN ND considers that the registration is used for the purpose of DAD only as opposed to that of achieving reachability, and as long as the same node registers the IPv6 address, the protocol is functional. In order to act as a RPL leaf registration protocol and achieve reachability, the device must use the same TID for all its concurrent registrations, and registrations with a past TID should be declined. The state for an obsolete registration in the 6LR, as well as the RPL routers on the way, should be invalidated. This can only be achieved with the addition of a new Status in the DAC message, and a new error/clean-up

flow in RPL.

5.3. Proxy registration

Thubert, Watteyne & AssimExpires April 28, 2015

[Page 9]

The 6BBR provides the capability to defend an address that is owned by a 6LoWPAN Node, and attract packets to that address, whether it is done by proxying ND over a MultiLink Subnet, redistributing the address in a routing protocol or advertising it through an alternate proxy registration such as the Locator/ID Separation Protocol [[RFC6830](#)] (LISP) or Mobility Support in IPv6 [[RFC6275](#)] (MIPv6). In a LLN, it makes sense to piggyback the request to proxy/defend an address with its registration.

5.4. Target Registration

In their current incarnations, both 6LoWPAN ND and Efficient ND expect that the address being registered is the source of the NS(AR0) message and thus impose that a Source Link-Layer Address (SLLA) option be present in the message. In a mesh scenario where the 6LBR is physically separated from the 6LoWPAN Node, the 6LBR does not own the address being registered. This suggests that [I-D.chakrabarti-nordmark-6man-efficient-nd] should evolve to register the Target of the NS message as opposed to the Source Address. From another perspective, it may happen, in the use case of a Star topology, that the 6LR, 6LBR and 6BBR are effectively collapsed and should support 6LoWPAN ND clients. The convergence of efficient ND and 6LoWPAN ND into a single protocol is thus highly desirable.

In any case, as long as the DAD process is not complete for the address used as source of the packet, it is against the current practice to advertise the SLLA, since this may corrupt the ND cache of the destination node, as discussed in the Optimistic DAD specification [[RFC4429](#)] with regards to the TENTATIVE state.

This may look like a chicken and an egg problem, but in fact 6LoWPAN ND acknowledges that the Link-Local Address that is based on an EUI-64 address of a LLN node may be autoconfigured without the need for DAD. It results that a node could use that Address as source, with an SLLA option in the message if required, to register any other addresses, either Global or Unique-Local Addresses, which would be indicated in the Target.

The suggested change is to register the target of the NS message, and use Target Link-Layer Address (TLA) in the NS as opposed to the SLLA in order to install a Neighbor Cache Entry. This would apply to both Efficient ND and 6LoWPAN ND in a very same manner, with the caveat that depending on the nature of the link between the 6LBR and the 6BBR, the 6LBR may resort to classical ND or DHCPv6 to obtain the address that it uses to source the NS registration messages, whether for itself or on behalf of LLN nodes.

5.5. RPL root vs. 6LBR

6LoWPAN ND is unclear on how the 6LBR is discovered, and how the

liveliness of the 6LBR is asserted over time. On the other hand, the discovery and liveliness of the RPL root are obtained through the RPL protocol.

When 6LoWPAN ND is coupled with RPL, it makes sense to collocate the 6LBR and the RPL root functionalities. The DAR/DAC exchange becomes a preamble to the DAO messages that are used from then on to reconfirm the registration, thus eliminating a duplication of functionality between DAO and DAR messages.

5.6. Securing the Registration

A typical attack against IPv6 ND is address spoofing, whereby a rogue node claims the IPv6 Address of another node in and hijacks its traffic.

SEcure Neighbor Discovery (SEND) [[RFC3971](#)] is designed to protect each individual ND lookup/advertisement in a peer to peer model where each lookup may be between different parties. This is not the case in a 6LoWPAN ND LLN where, as illustrated in Figure 4, the 6LBR terminates all the flows and may store security information for later validation.

Additionally SEND requires considerably enlarged ND messages to carry cryptographic material, and requires that each protected address is generated cryptographically, which implies the computation of a different key for each Cryptographically Generated Address (CGA). SEND as defined in [[RFC3971](#)] is thus largely unsuitable for application in a LLN.

Once an Address is registered, the 6LBR maintains a state for that Address and is in position to bind securely the first registration with the Node that placed it, whether the Address is CGA or not. It should thus be possible to protect the ownership of all the addresses of a 6LoWPAN Node with a single key, and there should not be a need to carry the cryptographic material more than once to the 6LBR.

The energy constraint is usually a foremost factor, and attention should be paid to minimize the burden on the CPU. Hardware-assisted support of variants of the Counter with CBC-MAC [[RFC3610](#)] (CCM) authenticated encryption block cipher mode such as CCM* are common in LowPower ship-set implementations, and 6LoWPAN ND security mechanism should be capable to reuse them when applicable.

Finally, the code footprint in the device being also an issue, the capability to reuse not only hardware-assist mechanisms but also software across layers has to be considered. For instance, if code has to be present for upper-layer operations, e.g AES-CCM Cipher Suites for Transport Layer Security (TLS) [[RFC6655](#)], then the

capability to reuse that code should be considered.

6. Communication Paradigms and Interaction Models

Thubert, Watteyne & AssimExpires April 28, 2015

[Page 11]

[I-D.ietf-6tisch-terminology] defines the terms of Communication Paradigms and Interaction Models, which can be placed in parallel to the Information Models and Data Models that are defined in [\[RFC3444\]](#).

A Communication Paradigms would be an abstract view of a protocol exchange, and would come with an Information Model for the information that is being exchanged. In contrast, an Interaction Models would be more refined and could point on standard operation such as a Representational state transfer (REST) "GET" operation and would match a Data Model for the data that is provided over the protocol exchange.

section 2.1.3 of [\[I-D.ietf-roll-rpl-industrial-applicability\]](#) and next sections discuss application-layer paradigms, such as Source-sink (SS) that is a Multipeer to Multipeer (MP2MP) model primarily used for alarms and alerts, Publish-subscribe (PS, or pub/sub) that is typically used for sensor data, as well as Peer-to-peer (P2P) and Peer-to-multipeer (P2MP) communications. Additional considerations on Duocast and its N-cast generalization are also provided. Those paradigms are frequently used in industrial automation, which is a major use case for IEEE802.15.4e TSCH wireless networks with [\[ISA100.11a\]](#) and [\[WirelessHART\]](#), that provides a wireless access to [\[HART\]](#) applications and devices.

This specification focuses on Communication Paradigms and Interaction Models for packet forwarding and TSCH resources (cells) management. Management mechanisms for the TSCH schedule at Link-layer (one-hop), Network-layer (multithop along a track), and Application-layer (remote control) are discussed in [Section 8](#). Link-layer frame forwarding interactions are discussed in [Section 9](#), and Network-layer Packet routing is addressed in [Section 10](#).

[7. TSCH and 6top](#)

[7.1. 6top](#)

6top is a logical link control sitting between the IP layer and the TSCH MAC layer, which provides the link abstraction that is required for IP operations. The 6top operations are specified in [I-D.wang-6tisch-6top-sublayer]. In particular, 6top provides a management interface that enables an external management entity to schedule cells and slotFrames, and allows the addition of complementary functionality, for instance to support a dynamic schedule management based on observed resource usage as discussed in [Section 8.2](#).

The 6top data model and management interfaces are further discussed in [Section 8.3](#).

If the scheduling entity explicitly specifies the slotOffset/channelOffset of the cells to be added/deleted, those cells are marked as "hard". 6top cannot move hard cells in the TSCH schedule. Hard cells are for example used by a central PCE.

6top contains a monitoring process which monitors the performance of cells, and can move a cell in the TSCH schedule when it performs bad. This is only applicable to cells which are marked as "soft". To reserve a soft cell, the higher layer does not indicate the exact slotOffset/channelOffset of the cell to add, but rather the resulting bandwidth and QoS requirements. When the monitoring process triggers a cell reallocation, the two neighbor nodes communicating over this cell negotiate its new position in the TSCH schedule.

7.2. 6top and RPL Objective Function operations

An implementation of a RPL [[RFC6550](#)] Objective Function (OF), such as the RPL Objective Function Zero (OF0) [[RFC6552](#)] that is used in the Minimal 6TiSCH Configuration [[I-D.ietf-6tisch-minimal](#)] to support RPL over a static schedule, may leverage, for its internal computation, the information maintained by 6top.

In particular, 6top creates and maintains an abstract neighbor table. A neighbor table entry contains a set of statistics with respect to that specific neighbor including the time when the last packet has been received from that neighbor, a set of cell quality metrics (RSSI, LQI), the number of packets sent to the neighbor or the number of packets received from it. This information can be obtained through 6top management APIs as detailed in the 6top sublayer specification [[I-D.wang-6tisch-6top-sublayer](#)] and used to compute a Rank Increment that will determine the selection of the preferred parent.

6top provides statistics about the underlying layer so the OF can be tuned to the nature of the TSCH MAC layer. 6top also enables the RPL OF to influence the MAC behaviour, for instance by configuring the periodicity of IEEE802.15.4e Extended Beacons (EB's). By augmenting the EB periodicity, it is possible to change the network dynamics so as to improve the support of devices that may change their point of attachment in the 6TiSCH network.

Some RPL control messages, such as the DODAG Information Object (DIO) are ICMPv6 messages that are broadcast to all neighbor nodes. With

6TiSCH, the broadcast channel requirement is addressed by 6top by configuring TSCH to provide a broadcast channel, as opposed to, for instance, piggybacking the DIO messages in Enhance Beacons.

In the TSCH schedule, each cell has the IEEE802.15.4e LinkType attribute. Setting the LinkType to ADVERTISING indicates that the cell MAY be used to send an Enhanced Beacon. When a node forms its Enhanced Beacon, the cell, with LinkType=ADVERTISING, SHOULD be included in the FrameAndLinkIE, and its LinkOption field SHOULD be set to the combination of "Receive" and "Timekeeping". The receiver of the Enhanced Beacon MAY be listening at the cell to get the Enhanced Beacon ([[IEEE802154e](#)]). 6top takes this way to establish broadcast channel, which not only allows TSCH to broadcast Enhanced Beacons, but also allows an upper layer like RPL.

To broadcast ICMPv6 control messages used by RPL such as DIO or DAO, 6top uses the payload of a Data frames. The message is inserted into the queue associated with the cells which LinkType is set to ADVERTISING. Then, taking advantage of the broadcast cell feature established with FrameAndLinkIE (as described above), the RPL control message can be received by neighbors, which enables the maintenance of RPL DODAGs.

A LinkOption combining "Receive" and "Timekeeping" bits indicates to the receivers of the Enhanced Beacon that the cell MUST be used as a broadcast cell. The frequency of sending Enhanced Beacons or other broadcast messages by the upper layer is determined by the timers associated with the messages. For example, the transmission of Enhance Beacons is triggered by a timer in 6top; transmission of a DIO message is triggered by the trickle timer of RPL.

[7.3.](#) Network Synchronization

Nodes in a TSCH network must be time synchronized. A node keeps synchronized to its time source neighbor through a combination of frame-based and acknowledgement-based synchronization. In order to maximize battery life and network throughput, it is advisable that RPL ICMP discovery and maintenance traffic (governed by the trickle timer) be somehow coordinated with the transmission of time synchronization packets (especially with enhanced beacons). This could be achieved through an interaction of the 6top sublayer and the RPL objective Function, or could be controlled by a management entity.

Time distribution requires a loop-less structure. Nodes taken in a synchronization loop will rapidly desynchronize from the network and become isolated. It is expected that a RPL DAG with a dedicated global Instance is deployed for the purpose of time synchronization. That Instance is referred to as the Time Synchronization Global Instance (TSGI). The TSGI can be operated in either of the 3 modes that are detailed in [section 3.1.3](#) of RPL [[RFC6550](#)], "Instances, DODAGs, and DODAG Versions". Multiple uncoordinated DODAGs with independent roots may be used if all the roots share a common time source such as the Global Positioning System (GPS). In the absence of a common time source, the TSGI should form a single DODAG with a virtual root. A backbone network is then used to synchronize and coordinate RPL operations between the backbone routers that act as sinks for the LLN.

A node that has not joined the TSGI advertises a MAC level Join Priority of 0xFF to notify its neighbors that it is not capable of serving as time parent. A node that has joined the TSGI advertises a MAC level Join Priority set to its DAGRank() in that Instance, where DAGRank() is the operation specified in [section 3.5.1 of \[RFC6550\]](#), "Rank Comparison".

A root is configured or obtains by some external means the knowledge of the RPLInstanceID for the TSGI. The root advertises its DagRank in the TSGI, that MUST be less than 0xFF, as its Join Priority (JP) in its IEEE802.15.4e Extended Beacons (EB). We'll note that the JP is now specified between 0 and 0x3F leaving 2 bits in the octet unused in the IEEE802.15.4e specification. After consultation with IEEE authors, it was asserted that 6TiSCH can make a full use of the octet to carry an integer value up to 0xFF.

A node that reads a Join Priority of less than 0xFF should join the neighbor with the lesser Join Priority and use it as time parent. If the node is configured to serve as time parent, then the node should join the TSGI, obtain a Rank in that Instance and start advertising its own DagRank in the TSGI as its Join Priority in its EBs.

[7.4. SlotFrames and Priorities](#)

6TiSCH enables in essence the capability to use IPv6 over a MAC layer that enables to schedule some of the transmissions. In order to ensure that the medium is free of contending packets when time arrives for a scheduled transmission, a window of time is defined around the scheduled transmission time where the medium must be free of contending energy.

One simple way to obtain such a window is to format time and frequencies in cells of transmission of equal duration. This is the

method that is adopted in IEEE802.15.4e TSCH as well as the Long Term

Evolution (LTE) of cellular networks.

In order to describe that formatting of time and frequencies, the 6TiSCH architecture defines a global concept that is called a Channel Distribution and Usage (CDU) matrix; a CDU matrix is a matrix of cells with an height equal to the number of available channels (indexed by ChannelOffsets), a timeSlot duration (10-15 milliseconds are typical in 802.15.4e TSCH) and a width (in timeSlots) that is the period of the network scheduling operation (indexed by slotOffsets) for that CDU matrix.

A CDU matrix iterates over and over with a pseudo-random rotation from an epoch time. In a given network, there might be multiple CDU matrices that operate with different width, so they have different durations and represent different periodic operations. It is recommended that all CDU matrices in a 6TiSCH domain operate with the same cell duration and are aligned, so as to reduce the chances of interferences from slotted-aloha operations. The knowledge of the CDU matrices is shared between all the nodes and used in particular to define slotFrames.

A slotFrame is a MAC-level abstraction that is common to all nodes and contains a series of timeSlots of equal length and precedence. It is characterized by a slotFrame_ID, and a slotFrame_size. A slotFrame aligns to a CDU matrix for its parameters, such as number and duration of timeSlots.

Multiple slotFrames can coexist in a node schedule, i.e., a node can have multiple activities scheduled in different slotFrames, based on the precedence of the 6TiSCH topologies. The slotFrames may be aligned to different CDU matrices and thus have different width. There is typically one slotFrame for scheduled traffic that has the highest precedence and one or more slotFrame(s) for RPL traffic. The timeSlots in the slotFrame are indexed by the SlotOffset; the first cell is at SlotOffset 0.

A 6TiSCH Instance is associated to one slotFrame. A slotFrame may be shared by multiple Instances of equal relative precedence. Within an Instance, 6top uses priority queues to manage concurrent data flows of different priorities within an Instance and between Instances of a same precedence, associated to a given IPv6 link and a given bundle of TX-cells. When a packet is received from an higher layer for transmission, 6top inserts that packet in the outgoing queue which matches the packet best (DSCP can therefore be used). At each scheduled transmit slot, 6top looks for the frame in all the outgoing queues that best matches the cells. If a frame is found, it is given to the TSCH MAC for transmission.

7.5. Distributing the reservation of cells

6TiSCH expects a high degree of scalability together with a distributed routing functionality based on RPL. To achieve this goal, the spectrum must be allocated in a way that allows for spatial reuse between zones that will not interfere with one another. In a large and spatially distributed network, a 6TiSCH node is often in a good position to determine usage of spectrum in its vicinity.

Use cases for distributed routing are often associated with a statistical distribution of best-effort traffic with variable needs for bandwidth on each individual link. With 6TiSCH, the link abstraction is implemented as a bundle of cells; the size of a bundle is optimal when both the energy wasted idle listening and the packet drops due to congestion loss are minimized. This can be maintained if the number of cells in a bundle is adapted dynamically, and with enough reactivity, to match the variations of best-effort traffic. In turn, the agility to fulfill the needs for additional cells improves when the number of interactions with other devices and the protocol latencies are minimized.

6TiSCH limits that interaction to RPL parents that will only negotiate with other RPL parents, and performs that negotiation by groups of cells as opposed to individual cells. The 6TiSCH architecture allows RPL parents to adjust dynamically, and independently from the PCE, the amount of bandwidth that is used to communicate between themselves and their children, in both directions; to that effect, an allocation mechanism enables a RPL parent to obtain the exclusive use of a portion of a CDU matrix within its interference domain. Note that a PCE is expected to have precedence in the allocation, so that a RPL parent would only be able to obtain portions that are not in-use by the PCE.

The 6TiSCH architecture introduces the concept of chunks [I-D.ietf-6tisch-terminology]) to operate such spectrum distribution for a whole group of cells at a time. The CDU matrix is formatted into a set of chunks, each of them identified uniquely by a chunk-ID. The knowledge of this formatting is shared between all the nodes in a 6TiSCH network. 6TiSCH also defines the process of chunk ownership appropriation whereby a RPL parent discovers a chunk that is not used in its interference domain (e.g lack of energy detected in reference cells in that chunk); then claims the chunk, and then defends it in case another RPL parent would attempt to appropriate it while it is in use. The chunk is the basic unit of ownership that is used in that process.


```

      +-----+-----+-----+-----+-----+-----+-----+
chan.Off. 0 |chnkA|chnkP|chnk7|chnk0|chnk2|chnkK|chnk1| ... |chnkZ|
      +-----+-----+-----+-----+-----+-----+-----+
chan.Off. 1 |chnkB|chnkQ|chnkA|chnkP|chnk3|chnkL|chnk2| ... |chnk1|
      +-----+-----+-----+-----+-----+-----+-----+
      ...
      +-----+-----+-----+-----+-----+-----+-----+
chan.Off. 15 |chnk0|chnk6|chnkN|chnk1|chnkJ|chnkZ|chnkI| ... |chnkG|
      +-----+-----+-----+-----+-----+-----+-----+
              0         1         2         3         4         5         6         M

```

As a result of the process of chunk ownership appropriation, the RPL parent has exclusive authority to decide which cell in the appropriated chunk can be used by which node in its interference domain. In other words, it is implicitly delegated the right to manage the portion of the CDU matrix that is represented by the chunk. The RPL parent may thus orchestrate which transmissions occur in any of the cells in the chunk, by allocating cells from the chunk to any form of communication (unicast, multicast) in any direction between itself and its children. Initially, those cells are added to the heap of free cells, then dynamically placed into existing bundles, in new bundles, or allocated opportunistically for one transmission.

The appropriation of a chunk can also be requested explicitly by the PCE to any node. In that case, the node still may need to perform the appropriation process to validate that no other node has claimed that chunk already. After a successful appropriation, the PCE owns the cells in that chunk, and may use them as hard cells to set up tracks.

8. Schedule Management Mechanisms

6TiSCH uses 4 paradigms to manage the TSCH schedule of the LLN nodes: Static Scheduling, neighbor-to-neighbor Scheduling, remote monitoring and scheduling management, and Hop-by-hop scheduling. Multiple mechanisms are defined that implement the associated Interaction Models, and can be combined and used in the same LLN. Which mechanism(s) to use depends on application requirements.

8.1. Minimal Static Scheduling

In the simplest instantiation of a 6TiSCH network, a common fixed schedule may be shared by all nodes in the network. Cells are shared, and nodes contend for slot access in a slotted aloha manner.

A static TSCH schedule can be used to bootstrap a network, as an initial phase during implementation, or as a fall-back mechanism in case of network malfunction. This schedule can be preconfigured or learnt by a node when joining the network. Regardless, the schedule remains unchanged after the node has joined a network. The Routing Protocol for LLNs (RPL) is used on the resulting network. This "minimal" scheduling mechanism that implements this paradigm is detailed in [[I-D.ietf-6tisch-minimal](#)].

8.2. Neighbor-to-neighbor Scheduling

In the simplest instantiation of a 6TiSCH network described in [Section 8.1](#), nodes may expect a packet at any cell in the schedule and will waste energy idle listening. In a more complex instantiation of a 6TiSCH network, a matching portion of the schedule is established between peers to reflect the observed amount of transmissions between those nodes. The aggregation of the cells between a node and a peer forms a bundle that the 6top layer uses to implement the abstraction of a link for IP. The bandwidth on that link is proportional to the number of cells in the bundle.

If the size of a bundle is configured to fit an average amount of bandwidth, peak emissions will be destroyed. If the size is configured to allow for peak emissions, energy is be wasted idle listening.

In the most efficient instantiation of a 6TiSCH network, the size of the bundles that implement the links may be changed dynamically in order to adapt to the need of end-to-end flows routed by RPL. An optional On-The-Fly (OTF) component may be used to monitor bandwidth usage and perform requests for dynamic allocation by the 6top sublayer. The OTF component is not part of the 6top sublayer. It may be collocated on the same device or may be partially or fully offloaded to an external system.

The 6top sublayer [[I-D.wang-6tisch-6top-sublayer](#)] defines a protocol for neighbor nodes to reserve soft cells to one another. Because this reservation is done without global knowledge of the schedule of nodes in the LLN, scheduling collisions are possible. 6top defines a monitoring process which continuously tracks the packet delivery ratio of soft cells. It uses these statistics to trigger the relocation of a soft cell in the schedule, using a negotiation protocol between the neighbors nodes communicating over that cell.

Monitoring and relocation is done in the 6top layer. For the upper layer, the connection between two neighbor nodes appears as an number of cells. Depending on traffic requirements, the upper layer can request 6top to add or delete a number of cells scheduled to a

particular neighbor, without being responsible for choosing the exact slotOffset/channelOffset of those cells.

8.3. Remote Monitoring and Schedule Management

The 6top interface document [[I-D.ietf-6tisch-6top-interface](#)] specifies the generic data model that can be used to monitor and manage resources of the 6top sublayer. Abstract methods are suggested for use by a management entity in the device. The data model also enables remote control operations on the 6top sublayer.

The capability to interact with the node 6top sublayer from multiple hops away can be leveraged for monitoring, scheduling, or a combination of thereof. The architecture supports variations on the deployment model, and focuses on the flows rather than whether there is a proxy or a translation operation en-route.

[I-D.ietf-6tisch-coap] defines an mapping of the 6top set of commands, which is described in [[I-D.ietf-6tisch-6top-interface](#)], to CoAP resources. This allows an entity to interact with the 6top layer of a node that is multiple hops away in a RESTful fashion.

[I-D.ietf-6tisch-coap] defines a basic set CoAP resources and associated RESTful access methods (GET/PUT/POST/DELETE). The payload (body) of the CoAP messages is encoded using the CBOR format. The draft also defines the concept of "profiles" to allow for future or specific extensions, as well as a mechanism for a CoAP client to discover the profiles installed on a node.

The entity issuing the CoAP requests can be a central scheduling entity (e.g. a PCE), a node multiple hops away with the authority to modify the TSCH schedule (e.g. the head of a local cluster), or a external device monitoring the overall state of the network (e.g. NME).

At the time of this writing, a Deterministic Networking (DetNet) [[I-D.finn-detnet-problem-statement](#)] effort as started at the IETF to provide homogeneous flows and services across layers. This architecture will be refined to comply with DetNet when the work is formalized.

[8.4.](#) Hop-by-hop Scheduling

A node can reserve a track to a destination node multiple hops away by installing soft cells at each intermediate node. This forms a track of soft cells. It is the responsibility of the 6top sublayer of each node on the track to monitor these soft cells and trigger relocation when needed.

This hop-by-hop reservation mechanism is similar to [[RFC2119](#)] and [[RFC5974](#)]. The protocol for a node to trigger hop-by-hop scheduling is not yet defined.

[9.](#) Forwarding Models

6TiSCH supports three different forwarding model, G-MPLS Track
Forwarding (TF), 6LoWPAN Fragment Forwarding (FF) and IPv6 Forwarding

(6F).

9.1. Track Forwarding

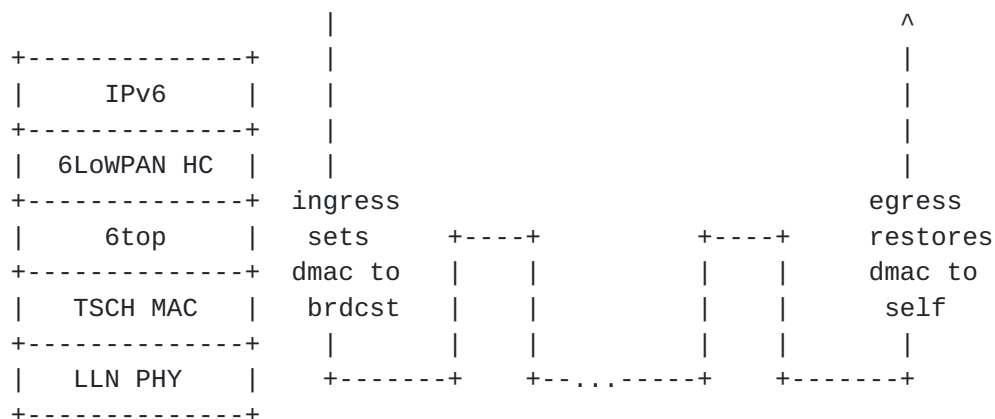
Track Forwarding is the simplest and fastest. A bundle of cells set to receive (RX-cells) is uniquely paired to a bundle of cells that are set to transmit (TX-cells), representing a layer-2 forwarding state that can be used regardless of the network layer protocol. This model can effectively be seen as a Generalized Multi-protocol Label Switching (G-MPLS) operation in that the information used to switch a frame is not an explicit label, but rather related to other properties of the way the packet was received, a particular cell in the case of 6TiSCH. As a result, as long as the TSCH MAC (and Layer 2 security) accepts a frame, that frame can be switched regardless of the protocol, whether this is an IPv6 packet, a 6LoWPAN fragment, or a frame from an alternate protocol such as WirelessHART or ISA100.11a.

A data frame that is forwarded along a Track normally has a destination MAC address that is set to broadcast - or a multicast address depending on MAC support. This way, the MAC layer in the intermediate nodes accepts the incoming frame and 6top switches it without incurring a change in the MAC header. In the case of IEEE802.15.4e, this means effectively broadcast, so that along the Track the short address for the destination of the frame is set to 0xFFFF.

A Track is thus formed end-to-end as a succession of paired bundles, a receive bundle from the previous hop and a transmit bundle to the next hop along the Track, and a cell in such a bundle belongs to at most one Track. For a given iteration of the device schedule, the effective channel of the cell is obtained by adding a pseudo-random number to the channelOffset of the cell, which results in a rotation of the frequency that used for transmission. The bundles may be computed so as to accommodate both variable rates and retransmissions, so they might not be fully used at a given iteration of the schedule. The 6TiSCH architecture provides additional means to avoid waste of cells as well as overflows in the transmit bundle, as follows:

In one hand, a TX-cell that is not needed for the current iteration may be reused opportunistically on a per-hop basis for routed packets. When all of the frame that were received for a given Track are effectively transmitted, any available TX-cell for that Track can be reused for upper layer traffic for which the next-hop router matches the next hop along the Track. In that case, the cell that is being used is effectively a TX-cell from the Track, but the short address for the destination is that of the next-hop router. It results that a frame that is received in a RX-cell of a Track with a

destination MAC address set to this node as opposed to broadcast must be extracted from the Track and delivered to the upper layer (a frame with an unrecognized MAC address is dropped at the lower MAC layer and thus is not received at the 6top sublayer).



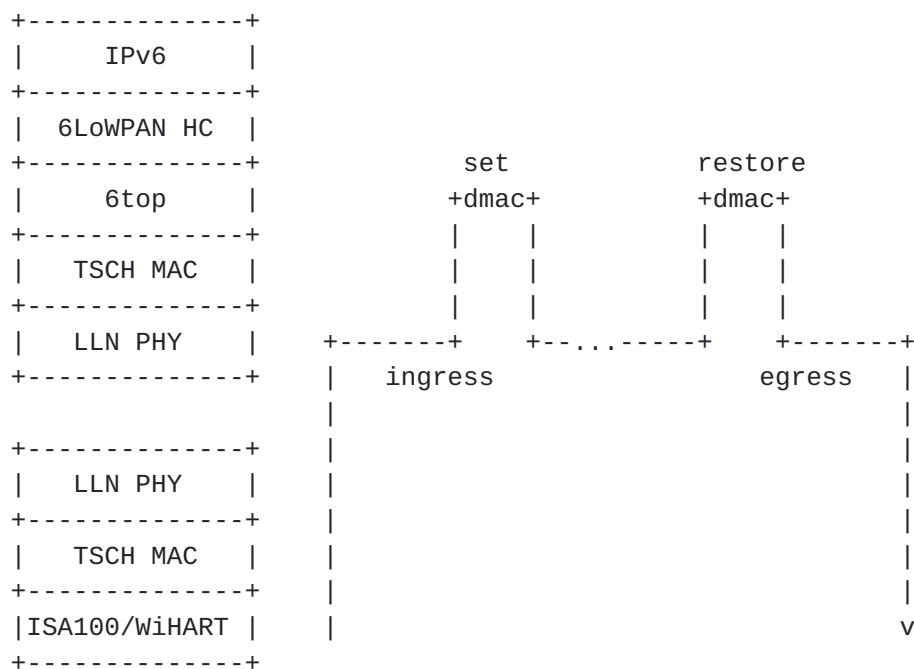
9.1.2. Tunnel Mode

Thubert, Watteyne & Assim Expires April 28, 2015

[Page 22]

In tunnel mode, the frames originate from an arbitrary protocol over a compatible MAC that may or may not be synchronized with the 6TiSCH network. An example of this would be a router with a dual radio that is capable of receiving and sending WirelessHART or ISA100.11a frames with the second radio, by presenting itself as an access Point or a Backbone Router, respectively.

In that mode, some entity (e.g. PCE) can coordinate with a WirelessHART Network Manager or an ISA100.11a System Manager to specify the flows that are to be transported transparently over the Track.



In that case, the flow information that identifies the Track at the ingress 6TiSCH router is derived from the RX-cell. The dmac is set to this node but the flow information indicates that the frame must be tunnelled over a particular Track so the frame is not passed to the upper layer. Instead, the dmac is forced to broadcast and the frame is passed to the 6top sublayer for switching.

At the egress 6TiSCH router, the reverse operation occurs. Based on metadata associated to the Track, the frame is passed to the appropriate link layer with the destination MAC restored.

9.1.3. Tunnel Metadata

Metadata coming with the Track configuration is expected to provide the destination MAC address of the egress endpoint as well as the tunnel mode and specific data depending on the mode, for instance a

service access point for frame delivery at egress. If the tunnel egress point does not have a MAC address that matches the configuration, the Track installation fails.

In transport mode, if the final layer-3 destination is the tunnel termination, then it is possible that the IPv6 address of the destination is compressed at the 6LoWPAN sublayer based on the MAC address. It is thus mandatory at the ingress point to validate that the MAC address that was used at the 6LoWPAN sublayer for compression matches that of the tunnel egress point. For that reason, the node that injects a packet on a Track checks that the destination is effectively that of the tunnel egress point before it overwrites it to broadcast. The 6top sublayer at the tunnel egress point reverts that operation to the MAC address obtained from the tunnel metadata.

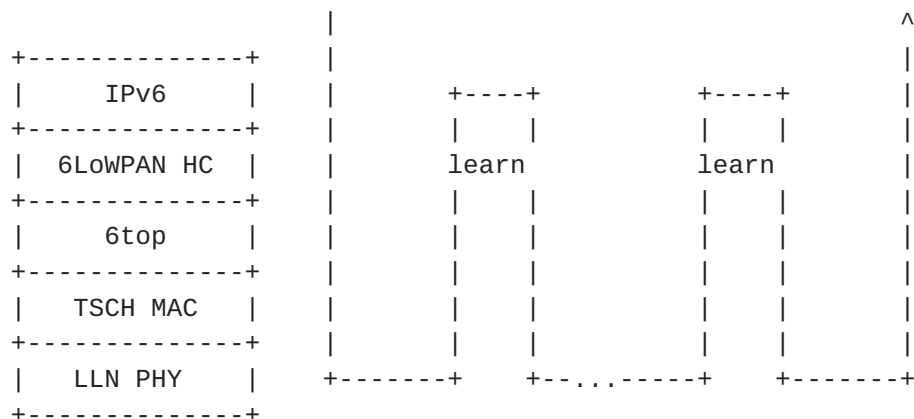
9.2. Fragment Forwarding

Considering that 6LoWPAN packets can be as large as 1280 bytes (the IPv6 MTU), and that the non-storing mode of RPL implies Source Routing that requires space for routing headers, and that a IEEE802.15.4 frame with security may carry in the order of 80 bytes of effective payload, an IPv6 packet might be fragmented into more than 16 fragments at the 6LoWPAN sublayer.

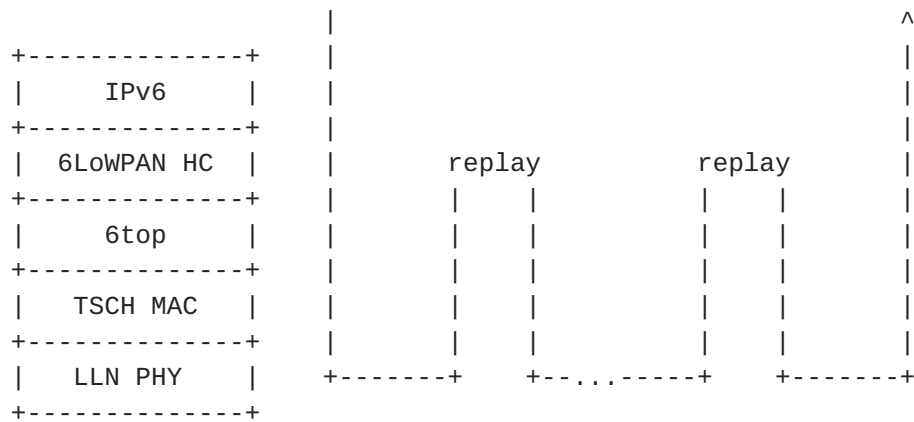
This level of fragmentation is much higher than that traditionally experienced over the Internet with IPv4 fragments, where fragmentation is already known as harmful.

In the case to a multihop route within a 6TiSCH network, Hop-by-Hop recomposition occurs at each hop in order to reform the packet and route it. This creates additional latency and forces intermediate nodes to store a portion of a packet for an undetermined time, thus impacting critical resources such as memory and battery.

[I-D.thubert-roll-forwarding-frags] describes a mechanism whereby the datagram tag in the 6LoWPAN Fragment is used as a label for switching at the 6LoWPAN sublayer. The draft allows for a degree of flow control base on an Explicit Congestion Notification, as well as end-to-end individual fragment recovery.



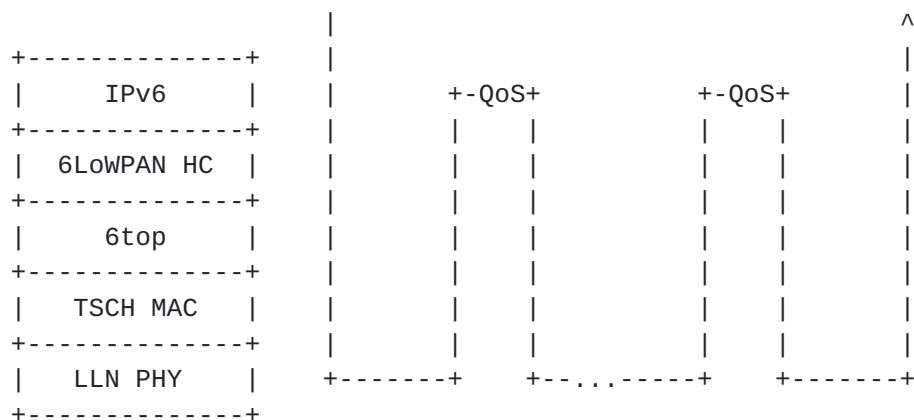
In that model, the first fragment is routed based on the IPv6 header that is present in that fragment. The 6LoWPAN sublayer learns the next hop selection, generates a new datagram tag for transmission to the next hop, and stores that information indexed by the incoming MAC address and datagram tag. The next fragments are then switched based on that stored state.



A bitmap and an ECN echo in the end-to-end acknowledgement enable the source to resend the missing fragments selectively. The first fragment may be resent to carve a new path in case of a path failure. The ECN echo set indicates that the number of outstanding fragments should be reduced.

9.3. IPv6 Forwarding

As the packets are routed at layer 3, traditional QoS and RED operations are expected to prioritize flows; the application of Differentiated Services is further discussed in [I-D.svshah-tsvwg-lln-diffserv-recommendations].



10. Centralized vs. Distributed Routing

6TiSCH supports a mixed model of centralized routes and distributed routes. Centralized routes can for example be computed by an entity such as a PCE. Distributed routes are computed by RPL.

Both methods may inject routes in the Routing Tables of the 6TiSCH routers. In either case, each route is associated with a 6TiSCH topology that can be a RPL Instance topology or a track. The 6TiSCH topology is indexed by a Instance ID, in a format that reuses the RPLInstanceID as defined in RPL [[RFC6550](#)].

Both RPL and PCE rely on shared sources such as policies to define Global and Local RPLInstanceIDs that can be used by either method. It is possible for centralized and distributed routing to share a same topology. Generally they will operate in different slotFrames, and centralized routes will be used for scheduled traffic and will have precedence over distributed routes in case of conflict between the slotFrames.

10.1. Packet Marking and Handling

All packets inside a 6TiSCH domain MUST carry the Instance ID that identifies the 6TiSCH topology that is to be used for routing and forwarding that packet. The location of that information MUST be the same for all packets forwarded inside the domain.

For packets that are routed by a PCE along a Track, the tuple formed by the IPv6 source address and a local RPLInstanceID in the packet identify uniquely the Track and associated transmit bundle. Additionally, an IP packet that is sent along a Track uses the Differentiated Services Per-Hop-Behavior Group called Deterministic Forwarding, as described in [I-D.svshah-tsvwg-deterministic-forwarding].

For packets that are routed by RPL, that information is the RPLInstanceID which is carried in the RPL Packet Information, as discussed in [section 11.2 of \[RFC6550\]](#), "Loop Avoidance and Detection".

The RPL Packet Information (RPI) is carried in IPv6 packets as a RPL option in the IPv6 Hop-By-Hop Header [[RFC6553](#)]. 6LoWPAN provides a Next Header Compression (NHC) for the RPI (RPI-NHC). The RPI-NHC is specified in [[I-D.thubert-6lo-rpl-nhc](#)], and is the compressed equivalent to the whole HbH header with the RPL option. In a 6LoWPAN network, the RPI-NHC is the recommended encoding the RPL Packet Information.

Either way, the method and format used for encoding the RPLInstanceID is generalized to all 6TiSCH topological Instances, which include both RPL Instances and Tracks.

11. IANA Considerations

This specification does not require IANA action.

12. Security Considerations

This specification is not found to introduce new security threat.

13. Contributors

The editors and authors wish to recognize the contribution of

Xavier Vilajosana who lead the design of the minimal support with RPL and contributed deeply to the 6top design.

Qin Wang who lead the design of the 6top sublayer and contributed related text that was moved and/or adapted in this document.

14. Acknowledgements

This specification is the result interactions in particular during the 6TiSCH (bi)Weekly call. The authors wish to thank: Alaeddine Weslati, Alfredo Grieco, Bert Greevenbosch, Cedric Adjih, Diego Dujovne, Dominique Barthel, Elvis Vogli, Geraldine Texier, Giuseppe Piro, Guillaume Gaillard, Herman Storey, Ines Robles, Jonathan Simon, Kazushi Muraoka, Ken Bannister, Kuor Hsin Chang, Laurent Toutain, Maik Seewald, Maria Rita Palattella, Michael Behringer, Michael Richardson, Nancy Cam Winget, Nicola Accettura, Nicolas Montavont, Oleg Hahm, Pat Kinney, Patrick Wetterwald, Paul Duffy, Peter van der Stock, Pieter de Mil, Pouria Zand, Rouhollah Nabati, Rafa Marin-Lopez, Raghuram Sudhaakar, Rene Struik, Sedat Gormus, Shitanshu Shah, Steve Simlo, Subir Das, Tengfei Chang, Tina Tsou, Tom Phinney, Xavier Lagrange and Yoshihiro Ohba for their various participation.

15. References

15.1. Normative References

- [RFC2119] Bradner, S., "Key words for use in RFCs to Indicate Requirement Levels", [BCP 14](#), [RFC 2119](#), March 1997.
- [RFC2460] Deering, S.E. and R.M. Hinden, "Internet Protocol, Version 6 (IPv6) Specification", [RFC 2460](#), December 1998.
- [RFC3444] Pras, A. and J. Schoenwaelder, "On the Difference between Information Models and Data Models", [RFC 3444](#), January 2003.
- [RFC3610] Whiting, D., Housley, R. and N. Ferguson, "Counter with CBC-MAC (CCM)", [RFC 3610](#), September 2003.
- [RFC3971] Arkko, J., Kempf, J., Zill, B. and P. Nikander, "SEcure Neighbor Discovery (SEND)", [RFC 3971](#), March 2005.
- [RFC4080] Hancock, R., Karagiannis, G., Loughney, J. and S. Van den Bosch, "Next Steps in Signaling (NSIS): Framework", [RFC 4080](#), June 2005.

[RFC4291] Hinden, R. and S. Deering, "IP Version 6 Addressing Architecture", [RFC 4291](#), February 2006.

- [RFC4389] Thaler, D., Talwar, M. and C. Patel, "Neighbor Discovery Proxies (ND Proxy)", [RFC 4389](#), April 2006.
- [RFC4429] Moore, N., "Optimistic Duplicate Address Detection (DAD) for IPv6", [RFC 4429](#), April 2006.
- [RFC4861] Narten, T., Nordmark, E., Simpson, W. and H. Soliman, "Neighbor Discovery for IP version 6 (IPv6)", [RFC 4861](#), September 2007.
- [RFC4862] Thomson, S., Narten, T. and T. Jinmei, "IPv6 Stateless Address Autoconfiguration", [RFC 4862](#), September 2007.
- [RFC4903] Thaler, D., "Multi-Link Subnet Issues", [RFC 4903](#), June 2007.
- [RFC4919] Kushalnagar, N., Montenegro, G. and C. Schumacher, "IPv6 over Low-Power Wireless Personal Area Networks (6LoWPANs): Overview, Assumptions, Problem Statement, and Goals", [RFC 4919](#), August 2007.
- [RFC5191] Forsberg, D., Ohba, Y., Patil, B., Tschafenig, H. and A. Yegin, "Protocol for Carrying Authentication for Network Access (PANA)", [RFC 5191](#), May 2008.
- [RFC5889] Baccelli, E. and M. Townsley, "IP Addressing Model in Ad Hoc Networks", [RFC 5889](#), September 2010.
- [RFC5974] Manner, J., Karagiannis, G. and A. McDonald, "NSIS Signaling Layer Protocol (NSLP) for Quality-of-Service Signaling", [RFC 5974](#), October 2010.
- [RFC6275] Perkins, C., Johnson, D. and J. Arkko, "Mobility Support in IPv6", [RFC 6275](#), July 2011.
- [RFC6282] Hui, J. and P. Thubert, "Compression Format for IPv6 Datagrams over IEEE 802.15.4-Based Networks", [RFC 6282](#), September 2011.
- [RFC6550] Winter, T., Thubert, P., Brandt, A., Hui, J., Kelsey, R., Levis, P., Pister, K., Struik, R., Vasseur, JP. and R. Alexander, "RPL: IPv6 Routing Protocol for Low-Power and Lossy Networks", [RFC 6550](#), March 2012.
- [RFC6552] Thubert, P., "Objective Function Zero for the Routing Protocol for Low-Power and Lossy Networks (RPL)", [RFC 6552](#), March 2012.
- [RFC6553] Hui, J. and JP. Vasseur, "The Routing Protocol for Low-

Power and Lossy Networks (RPL) Option for Carrying RPL
Information in Data-Plane Datagrams", [RFC 6553](#), March
2012.

- [RFC6620] Nordmark, E., Bagnulo, M. and E. Levy-Abegnoli, "FCFS SAVI: First-Come, First-Served Source Address Validation Improvement for Locally Assigned IPv6 Addresses", [RFC 6620](#), May 2012.
- [RFC6655] McGrew, D. and D. Bailey, "AES-CCM Cipher Suites for Transport Layer Security (TLS)", [RFC 6655](#), July 2012.
- [RFC6775] Shelby, Z., Chakrabarti, S., Nordmark, E. and C. Bormann, "Neighbor Discovery Optimization for IPv6 over Low-Power Wireless Personal Area Networks (6LoWPANs)", [RFC 6775](#), November 2012.
- [RFC6830] Farinacci, D., Fuller, V., Meyer, D. and D. Lewis, "The Locator/ID Separation Protocol (LISP)", [RFC 6830](#), January 2013.

[15.2. Informative References](#)

- [I-D.chakrabarti-nordmark-6man-efficient-nd]
Chakrabarti, S., Nordmark, E., Thubert, P. and M. Wasserman, "Wired and Wireless IPv6 Neighbor Discovery Optimizations", Internet-Draft [draft-chakrabarti-nordmark-6man-efficient-nd-04](#), October 2013.
- [I-D.finn-detnet-problem-statement]
Finn, N. and P. Thubert, "Deterministic Networking Problem Statement", Internet-Draft [draft-finn-detnet-problem-statement-01](#), October 2014.
- [I-D.ietf-6tisch-6top-interface]
Wang, Q., Vilajosana, X. and T. Watteyne, "6TiSCH Operation Sublayer (6top) Interface", Internet-Draft [draft-ietf-6tisch-6top-interface-00](#), March 2014.
- [I-D.ietf-6tisch-coap]
Sudhaakar, R. and P. Zand, "6TiSCH Resource Management and Interaction using CoAP", Internet-Draft [draft-ietf-6tisch-coap-00](#), May 2014.
- [I-D.ietf-6tisch-minimal]
Vilajosana, X. and K. Pister, "Minimal 6TiSCH Configuration", Internet-Draft [draft-ietf-6tisch-minimal-00](#), November 2013.
- [I-D.ietf-6tisch-terminology]
Palattella, M., Thubert, P., Watteyne, T. and Q. Wang, "Terminology in IPv6 over the TSCH mode of IEEE 802.15.4e", Internet-Draft [draft-ietf-6tisch-](#)

[terminology-00](#), November 2013.

[I-D.ietf-6tisch-tsch]

Thubert, Watteyne & Assim Expires April 28, 2015

[Page 29]

Watteyne, T., Palattella, M. and L. Grieco, "Using IEEE802.15.4e TSCH in an LLN context: Overview, Problem Statement and Goals", Internet-Draft [draft-ietf-6tisch-tsch-00](#), November 2013.

[I-D.ietf-ipv6-multilink-subnets]

Thaler, D. and C. Huitema, "Multi-link Subnet Support in IPv6", Internet-Draft [draft-ietf-ipv6-multilink-subnets-00](#), July 2002.

[I-D.ietf-roll-rpl-industrial-applicability]

Phinney, T., Thubert, P. and R. Assimiti, "RPL applicability in industrial networks", Internet-Draft [draft-ietf-roll-rpl-industrial-applicability-02](#), October 2013.

[I-D.svshah-tsvwg-deterministic-forwarding]

Shah, S. and P. Thubert, "Deterministic Forwarding PHB", Internet-Draft [draft-svshah-tsvwg-deterministic-forwarding-01](#), March 2014.

[I-D.svshah-tsvwg-lln-diffserv-recommendations]

Shah, S. and P. Thubert, "Differentiated Service Class Recommendations for LLN Traffic", Internet-Draft [draft-svshah-tsvwg-lln-diffserv-recommendations-01](#), August 2013.

[I-D.thubert-6lo-rpl-nhc]

Thubert, P. and C. Bormann, "A compression mechanism for the RPL option", Internet-Draft [draft-thubert-6lo-rpl-nhc-02](#), October 2014.

[I-D.thubert-6lowpan-backbone-router]

Thubert, P., "6LoWPAN Backbone Router", Internet-Draft [draft-thubert-6lowpan-backbone-router-03](#), February 2013.

[I-D.thubert-roll-forwarding-frags]

Thubert, P. and J. Hui, "LLN Fragment Forwarding and Recovery", Internet-Draft [draft-thubert-roll-forwarding-frags-02](#), September 2013.

[I-D.wang-6tisch-6top-sublayer]

Wang, Q., Vilajosana, X. and T. Watteyne, "6TiSCH Operation Sublayer (6top)", Internet-Draft [draft-wang-6tisch-6top-00](#), October 2013.

[15.3. External Informative References](#)

[HART] www.hartcomm.org, "Highway Addressable Remote Transducer, a group of specifications for industrial process and control devices administered by the HART Foundation", .

[IEEE802.1TSNTG]

Thubert, Watteyne & Assim Expires April 28, 2015

[Page 30]

IEEE Standards Association, "IEEE 802.1 Time-Sensitive Networks Task Group", March 2013, <<http://www.ieee802.org/1/pages/avbridges.html>>.

[IEEE802154e]

IEEE standard for Information Technology, "IEEE std. 802.15.4e, Part. 15.4: Low-Rate Wireless Personal Area Networks (LR-WPANs) Amendment 1: MAC sublayer", April 2012.

[ISA100.11a]

ISA/ANSI, "Wireless Systems for Industrial Automation: Process Control and Related Applications - ISA100.11a-2011 - IEC 62734", 2011, <<http://www.isa.org/Community/SP100WirelessSystemsforAutomation>>.

[WirelessHART]

www.hartcomm.org, "Industrial Communication Networks - Wireless Communication Network and Communication Profiles - WirelessHART - IEC 62591", 2010.

Authors' Addresses

Pascal Thubert, editor
Cisco Systems, Inc
Building D
45 Allee des Ormes - BP1200
MOUGINS - Sophia Antipolis, 06254
FRANCE

Phone: +33 497 23 26 34
Email: pthubert@cisco.com

Thomas Watteyne
Linear Technology, Dust Networks Product Group
30695 Huntwood Avenue
Hayward, CA 94544
USA

Phone: +1 (510) 400-2978
Email: twatteyne@linear.com

Robert Assimiti
Centero
961 Indian Hills Parkway
Marietta, GA 30068
USA

Phone: +1 404 461 9614

Email: robert.assimiti@centerotech.com

Thubert, Watteyne & AssimExpires April 28, 2015

[Page 31]