

Network Working Group	J. Hadi Salim	
Internet-Draft	Mojatatu Networks	
Expires: August 2, 2009	K. Ogawa	
	NTT Corporation	
	January 29, 2009	

[TOC](#)

SCTP based TML (Transport Mapping Layer) for ForCES protocol draft-ietf-forces-sctptml-02

Status of this Memo

This Internet-Draft is submitted to IETF in full conformance with the provisions of BCP 78 and BCP 79.

Internet-Drafts are working documents of the Internet Engineering Task Force (IETF), its areas, and its working groups. Note that other groups may also distribute working documents as Internet-Drafts.

Internet-Drafts are draft documents valid for a maximum of six months and may be updated, replaced, or obsoleted by other documents at any time. It is inappropriate to use Internet-Drafts as reference material or to cite them other than as "work in progress."

The list of current Internet-Drafts can be accessed at <http://www.ietf.org/ietf/1id-abstracts.txt>.

The list of Internet-Draft Shadow Directories can be accessed at <http://www.ietf.org/shadow.html>.

This Internet-Draft will expire on August 2, 2009.

Copyright Notice

Copyright (c) 2009 IETF Trust and the persons identified as the document authors. All rights reserved.

This document is subject to BCP 78 and the IETF Trust's Legal Provisions Relating to IETF Documents in effect on the date of publication of this document (<http://trustee.ietf.org/license-info>). Please review these documents carefully, as they describe your rights and restrictions with respect to this document.

Abstract

This document defines the SCTP based TML (Transport Mapping Layer) for the ForCES protocol. It explains the rationale for choosing the SCTP (Stream Control Transmission Protocol) [[RFC2960](#)] ([Stewart, R., Xie, Q., Morneault, K., Sharp, C., Schwarzbauer, H., Taylor, T., Rytina, I., Kalla, M., Zhang, L., and V. Paxson, "Stream Control Transmission Protocol," October 2000.](#)) and also describes how this TML addresses all the requirements described in [[RFC3654](#)] ([Khosravi, H. and T. Anderson,](#)

["Requirements for Separation of IP Control and Forwarding," November 2003.\)](#) and the ForCES protocol [\[FE-PROTO\]](#) (Doria (Ed.), A., Haas (Ed.), R., Hadi Salim (Ed.), J., Khosravi (Ed.), H., M. Wang (Ed.), W., Dong, L., and R. Gopal, "ForCES Protocol Specification," November 2008.) draft.

Table of Contents

1.	Definitions
2.	Introduction
3.	Protocol Framework Overview
3.1.	The PL
3.2.	The TML
3.2.1.	TML and PL Interfaces
3.2.2.	TML Parameterization
4.	SCTP TML overview
4.1.	Rationale for using SCTP for TML
4.2.	Meeting TML requirements
4.2.1.	SCTP TML Channels
4.2.2.	Satisfying TML Requirements
5.	Channel work scheduling
5.1.	FE Channel work scheduling
5.2.	CE Channel work scheduling
6.	Service Interface
6.1.	TML Boot-strapping
6.2.	TML Shutdown
6.3.	TML Sending and Receiving
7.	IANA Considerations
8.	Security Considerations
8.1.	TML Security Services using TLS and DTLS
8.1.1.	TLS Usage
8.2.	TML Security Services using IPsec
8.2.1.	IPsec Usage
9.	Manageability Considerations
10.	Acknowledgements
11.	References
11.1.	Normative References
11.2.	Informative References
§	Authors' Addresses

1. Definitions

TOC

The following definitions are taken from [\[RFC3654\]](#) (Khosravi, H. and T. Anderson, "Requirements for Separation of IP Control and Forwarding,"

[November 2003.](#)) and [\[RFC3746\] \(Yang, L., Dantu, R., Anderson, T., and R. Gopal, "Forwarding and Control Element Separation \(ForCES\) Framework," April 2004.\)](#):

ForCES Protocol -- The protocol used at the Fp reference point in the ForCES Framework in [\[RFC3746\] \(Yang, L., Dantu, R., Anderson, T., and R. Gopal, "Forwarding and Control Element Separation \(ForCES\) Framework," April 2004.\)](#).

ForCES Protocol Layer (ForCES PL) -- A layer in ForCES protocol architecture that defines the ForCES protocol architecture and the state transfer mechanisms as defined in [\[FE-PROTO\] \(Doria \(Ed.\), A., Haas \(Ed.\), R., Hadi Salim \(Ed.\), J., Khosravi \(Ed.\), H., M. Wang \(Ed.\), W., Dong, L., and R. Gopal, "ForCES Protocol Specification," November 2008.\)](#).

ForCES Protocol Transport Mapping Layer (ForCES TML) -- A layer in ForCES protocol architecture that specifically addresses the protocol message transportation issues, such as how the protocol messages are mapped to different transport media (like SCTP, IP, ATM, Ethernet, etc), and how to achieve and implement reliability, security, etc.

2. Introduction

[TOC](#)

The ForCES (Forwarding and Control Element Separation) working group in the IETF defines the architecture and protocol for separation of Control Elements(CE) and Forwarding Elements(FE) in Network Elements(NE) such as routers. [\[RFC3654\] \(Khosravi, H. and T. Anderson, "Requirements for Separation of IP Control and Forwarding," November 2003.\)](#) and [\[RFC3746\] \(Yang, L., Dantu, R., Anderson, T., and R. Gopal, "Forwarding and Control Element Separation \(ForCES\) Framework," April 2004.\)](#) respectively define architectural and protocol requirements for the communication between CE and FE. The ForCES protocol layer specification [\[FE-PROTO\] \(Doria \(Ed.\), A., Haas \(Ed.\), R., Hadi Salim \(Ed.\), J., Khosravi \(Ed.\), H., M. Wang \(Ed.\), W., Dong, L., and R. Gopal, "ForCES Protocol Specification," November 2008.\)](#) describes the protocol semantics and workings. The ForCES protocol layer operates on top of an inter-connect hiding layer known as the TML. The relationship is illustrated in [Figure 1 \(Message exchange between CE and FE to establish an NE association\)](#).

This document defines the SCTP based TML for the ForCES protocol layer. It also addresses all the requirements for the TML including security, reliability, etc as defined in [\[FE-PROTO\] \(Doria \(Ed.\), A., Haas \(Ed.\), R., Hadi Salim \(Ed.\), J., Khosravi \(Ed.\), H., M. Wang \(Ed.\), W., Dong, L., and R. Gopal, "ForCES Protocol Specification," November 2008.\)](#).

[TOC](#)

3. Protocol Framework Overview

The reader is referred to the Framework document [\[RFC3746\] \(Yang, L., Dantu, R., Anderson, T., and R. Gopal, "Forwarding and Control Element Separation \(ForCES\) Framework," April 2004.\)](#), and in particular sections 3 and 4, for an architectural overview and explanation of where and how the ForCES protocol fits in.

There is some content overlap between the ForCES protocol draft [\[FE-PROTO\] \(Doria \(Ed.\), A., Haas \(Ed.\), R., Hadi Salim \(Ed.\), J., Khosravi \(Ed.\), H., M. Wang \(Ed.\), W., Dong, L., and R. Gopal, "ForCES Protocol Specification," November 2008.\)](#) and this section ([Section 3 \(Protocol Framework Overview\)](#)) in order to provide basic context to the reader of this document.

The ForCES protocol layering constitutes two pieces: the PL and TML layer. This is depicted in [Figure 1 \(Message exchange between CE and FE to establish an NE association\)](#).

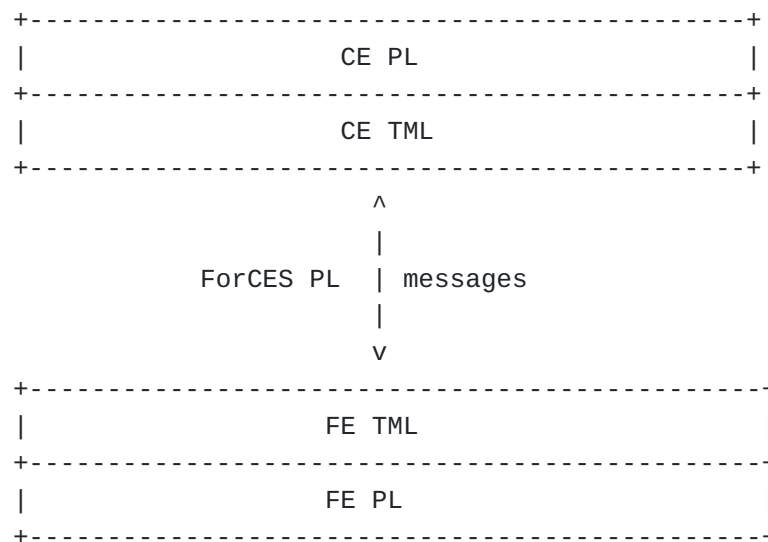


Figure 1: Message exchange between CE and FE to establish an NE association

The PL is in charge of the ForCES protocol. Its semantics and message layout are defined in [\[FE-PROTO\] \(Doria \(Ed.\), A., Haas \(Ed.\), R., Hadi Salim \(Ed.\), J., Khosravi \(Ed.\), H., M. Wang \(Ed.\), W., Dong, L., and R. Gopal, "ForCES Protocol Specification," November 2008.\)](#). The TML is necessary to connect two ForCES end-points as shown in [Figure 1 \(Message exchange between CE and FE to establish an NE association\)](#).

Both the PL and TML are standardized by the IETF. While only one PL is defined, different TMLs are expected to be standardized. The TML at each of the nodes (CE and FE) is expected to be of the same definition in order to inter-operate.

When transmitting from a ForCES end-point, the PL delivers its messages to the TML. The TML then delivers the PL message to the destination TML(s).

On reception of a message, the TML delivers the message to its destination PL level (as described in the ForCES header).

3.1. The PL

[TOC](#)

The PL is common to all implementations of ForCES and is standardized by the IETF [\[FE-PROTO\] \(Doria \(Ed.\), A., Haas \(Ed.\), R., Hadi Salim \(Ed.\), J., Khosravi \(Ed.\), H., M. Wang \(Ed.\), W., Dong, L., and R. Gopal, "ForCES Protocol Specification," November 2008.\)](#). The PL level is responsible for associating an FE or CE to an NE. It is also responsible for tearing down such associations.

An FE may use the PL level to asynchronously send packets to the CE. The FE may redirect via the PL (from outside the NE) various control protocol packets (e.g. OSPF, etc) to the CE. Additionally, the FE delivers various events that CE has subscribed-to via PL [\[FE-MODEL\] \(Halpern, J. and J. Hadi Salim, "ForCES Forwarding Element Model," October 2008.\)](#).

The CE and FE may interact synchronously via the PL. The CE issues status requests to the FE and receives responses via the PL. The CE also configures the associated FE's LFBs' components using the PL [\[FE-MODEL\] \(Halpern, J. and J. Hadi Salim, "ForCES Forwarding Element Model," October 2008.\)](#).

3.2. The TML

[TOC](#)

The TML level is responsible for transport of the PL level messages. [\[FE-PROTO\] \(Doria \(Ed.\), A., Haas \(Ed.\), R., Hadi Salim \(Ed.\), J., Khosravi \(Ed.\), H., M. Wang \(Ed.\), W., Dong, L., and R. Gopal, "ForCES Protocol Specification," November 2008.\)](#) section 5 defines the requirements that need to be met by a TML specification. The SCTP TML specified in this document meets all the requirements specified in [\[FE-PROTO\] \(Doria \(Ed.\), A., Haas \(Ed.\), R., Hadi Salim \(Ed.\), J., Khosravi \(Ed.\), H., M. Wang \(Ed.\), W., Dong, L., and R. Gopal, "ForCES Protocol Specification," November 2008.\)](#) section 5. [Section 4.2.2 \(Satisfying TML Requirements\)](#) describes how the TML requirements are met.

3.2.1. TML and PL Interfaces

[TOC](#)

There are two interfaces to the PL and TML, both of which are out of scope for ForCES. The first one is the interface between the PL and TML and the other is the CE Manager (CEM)/FE Manager (FEM)[\[RFC3746\]](#) ([Yang, L., Dantu, R., Anderson, T., and R. Gopal, "Forwarding and Control Element Separation \(ForCES\) Framework," April 2004.](#)) interface to both the PL and TML. Both interfaces are shown in [Figure 2 \(The TML-PL interface\)](#).

[\[TML-API\]](#) ([M. Wang, W., Hadi Salim, J., and A. Audu, "ForCES Transport Mapping Layer \(TML\) Service Primitives," Feb. 2007.](#)) defines an interface between the PL and the TML layers. The end goal of [\[TML-API\]](#) ([M. Wang, W., Hadi Salim, J., and A. Audu, "ForCES Transport Mapping Layer \(TML\) Service Primitives," Feb. 2007.](#)) is to provide a consistent top edge semantics for all TMLs to adhere to. Conforming to such an interface makes it easy to plug in different TMLs over time for a singular PL.

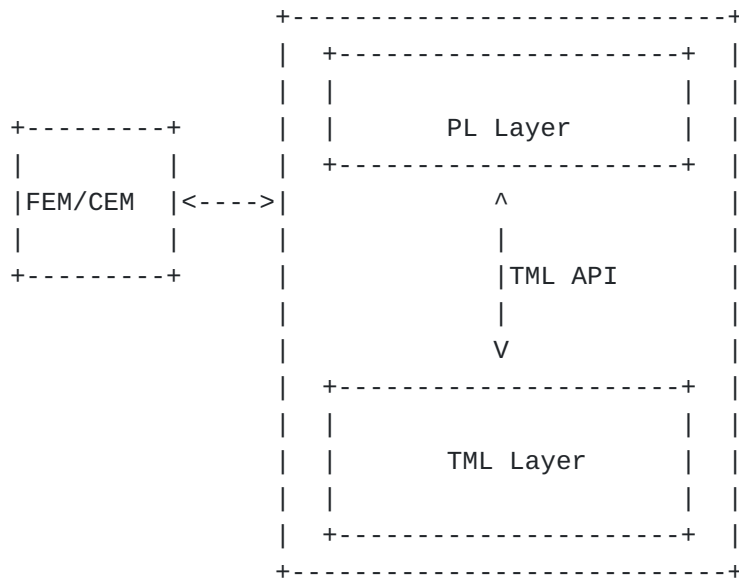


Figure 2: The TML-PL interface

XXX - Editorial Note: There is some concern (and confusion) about defining APIs in ForCES. So at the moment the future of [\[TML-API\]](#) ([M. Wang, W., Hadi Salim, J., and A. Audu, "ForCES Transport Mapping Layer](#)

([TML](#)) [Service Primitives](#)," Feb. 2007.) is unknown and we will remove references to it in future revisions of this document. [Figure 2 \(The TML-PL interface\)](#) also shows an interface referred to as CEM/FEM[\[RFC3746\]](#) (Yang, L., Dantu, R., Anderson, T., and R. Gopal, "Forwarding and Control Element Separation (ForCES) Framework," April 2004.) which is responsible for bootstrapping and parameterization of the TML. In its most basic form the CEM/FEM interface takes the form of a simple static config file which is read on startup in the pre-association phase. [Section 6 \(Service Interface\)](#) discusses in more details the service interfaces.

3.2.2. TML Parameterization

[TOC](#)

It is expected that it should be possible to use a configuration reference point, such as the FEM or the CEM, to configure the TML. Some of the configured parameters may include:

- *PL ID
 - *Connection Type and associated data. For example if a TML uses IP/SCTP then parameters such as SCTP ports and IP addresses need to be configured.
 - *Number of transport connections
 - *Connection Capability, such as bandwidth, etc.
 - *Allowed/Supported Connection QoS policy (or Congestion Control Policy)
-

4. SCTP TML overview

[TOC](#)

SCTP [\[RFC2960\]](#) (Stewart, R., Xie, Q., Morneault, K., Sharp, C., Schwarzbauer, H., Taylor, T., Rytina, I., Kalla, M., Zhang, L., and V. Paxson, "Stream Control Transmission Protocol," October 2000.) is an end-to-end transport protocol that is equivalent to TCP, UDP, or DCCP in many aspects. With a few exceptions, SCTP can do most of what UDP, TCP, or DCCP can achieve. SCTP as well can do most of what a combination of the other transport protocols can achieve (eg TCP and DCCP or TCP and UDP).

Like TCP, it provides ordered, reliable, connection-oriented, flow-controlled, congestion controlled data exchange. Unlike TCP, it does not provide byte streaming and instead provides message boundaries. Like UDP, it can provide unreliable, unordered data exchange. Unlike UDP, it does not provide multicast support. Like DCCP, it can provide unreliable, ordered, congestion controlled, connection-oriented data exchange. SCTP also provides other services that none of the 3 transport protocols mentioned above provide. These include:

***Multi-homing**

An SCTP connection can make use of multiple destination IP addresses to communicate with its peer.

***Runtime IP address binding**

With the SCTP Dynamic Address Reconfiguration ([\[RFC5061\]](#) ([Stewart, R., Xie, Q., Tuexen, M., Maruyama, S., and M. Kozuka, "Stream Control Transmission Protocol \(SCTP\) Dynamic Address Reconfiguration," September 2007.](#))) feature, a new IP address can be bound at runtime. This allows for migration of endpoints without restarting the association (valuable for high availability).

***A range of reliability shades with congestion control**

SCTP offers a range of services from full reliability to none, and from full ordering to none. With SCTP, on a per message basis, the application can specify a message's time-to-live. When the expressed time expires, the message can be "skipped".

***Built-in heartbeats**

SCTP has built-in heartbeat mechanism that validate the reachability of peer addresses.

***Multi-streaming**

A known problem with TCP is head of line (HOL) blocking. If you have independent messages, TCP enforces ordering of such messages. Loss at the head of the messages implies delays of delivery of subsequent packets. SCTP allows for defining up to 64K independent streams over the same socket connection, which are ordered independently.

***Message boundaries with reliability**

SCTP allows for easier message parsing (just like UDP but with reliability built in) because it establishes boundaries on a PL message basis. On a TCP stream, one would have to use techniques such peeking into the message to figure the boundaries.

***Improved SYN DOS protection**

Unlike TCP, which does a 3 way connection setup handshake, SCTP

does a 4 way handshake. This improves against SYN-flood attacks because listening sockets do not set up state until a connection is validated.

***Simpler transport events**

An application (such as the TML) can subscribe to be notified of both local and remote transport events. Events that can be subscribed-to include indication of association changes, addressing changes, remote errors, expiry of timed messages, etc. These events are off by default and require explicit subscription.

***Simplified replicasting**

Although SCTP does not allow for multicasting it allows for a single message from an application to be sent to multiple peers. This reduces the messaging that typically crosses different memory domains within a host (example in a kernel to user space domain of an operating system).

4.1. Rationale for using SCTP for TML

[TOC](#)

SCTP has all the features required to provide a robust TML. As a transport that is all-encompassing, it negates the need for having multiple transport protocols in order to satisfy the TML requirements ([\[FE-PROTO\] \(Doria \(Ed.\), A., Haas \(Ed.\), R., Hadi Salim \(Ed.\), J., Khosravi \(Ed.\), H., M. Wang \(Ed.\), W., Dong, L., and R. Gopal, "ForCES Protocol Specification," November 2008.\)](#) section 5). As a result it allows for simpler coding and therefore reduces a lot of the interoperability concerns. SCTP is also very mature and widely used making it a good choice for ubiquitous deployment.

4.2. Meeting TML requirements

[TOC](#)

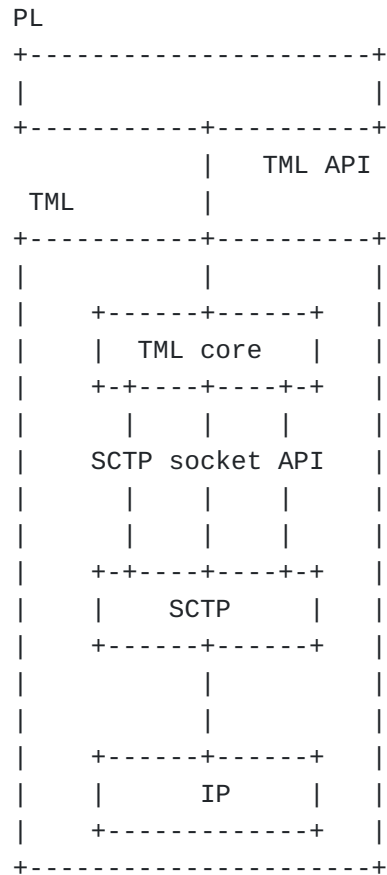


Figure 3: The TML-SCTP interface

[Figure 3 \(The TML-SCTP interface\)](#) details the interfacing between the PL and SCTP TML and the internals of the SCTP TML. The core of the TML interacts on its north-bound interface to the PL (utilizing the TML API). On the south-bound interface, the TML core interfaces to the SCTP layer utilizing the standard socket interface [XXX Editorial: add here a reference to SCTP Sockets API doc]. There are three SCTP socket connections opened between any two PL endpoints (whether FE or CE).

4.2.1. SCTP TML Channels

[TOC](#)

simplifies programming of the TML as well as conserves use of SCTP ports.

Further analysis revealed head of line blocking issues with this initial approach. Lower priority packets not needing reliable delivery could block higher priority packets (needing reliable delivery) under congestion situation. For this reason, we elected to go with mapping each of the three channels to a different SCTP socket (instead of a different stream within a single socket).

4.2.1.2. Higher Priority, Reliable channel

[TOC](#)

The higher priority (HP) channel uses a standard SCTP reliable socket on port 6700. It is used for CE solicited messages and their responses:

1. ForCES configuration messages flowing from CE to FE and responses from the FE to CE.
2. ForCES query messages flowing from CE to FE and responses from the FE to the CE.

It is recommended that the following PL messages use the HP channel for transport:

*Association Setup

*Association Setup Response

*Association Teardown

*Config

*Config Response

*Query

*Query Response

4.2.1.3. Medium Priority, Semi-Reliable channel

[TOC](#)

The medium priority (MP) channel uses SCTP-PR on port 6701. Time limits on how long a message is valid are set on each outgoing message. This channel is used for events from the FE to the CE that are obsoleted over time. Events that are accumulative in nature and are recoverable by the CE (by issuing a query to the FE) can tolerate lost events and

therefore should use this channel. For example, a generated event which carries the value of a counter that is monotonically incrementing fits to use this channel.

It is recommended that the following PL messages use the MP channel for transport:

*Event Notification

4.2.1.4. Lower Priority, Unreliable channel

[TOC](#)

The lower priority (LP) channel uses SCTP port 6702. This channel also uses SCTP-PR with lower timeout values than the MP channel. The reason an unreliable channel is used for redirect messages is to allow the control protocol at both the CE and its peer-endpoint to take charge of how the end-to-end semantics of the said control protocol's operations. For example:

1. Some control protocols are reliable in nature, therefore making this channel reliable introduces an extra layer of reliability which could be harmful. So any end-to-end retransmits will happen from remote.
2. Some control protocols may desire to have obsolescence of messages over retransmissions; making this channel reliable contradicts that desire.

Given ForCES PL level heartbeats are traffic sensitive, sending them over the LP channel also makes sense. If the other end is not processing other channels it will eventually get heartbeats; and if it is busy processing other channels heartbeats will be obsoleted locally over time (and it does not matter if they did not make it). It is recommended that the following PL messages use the MP channel for transport:

*Packet Redirect

*Heartbeats

[TOC](#)

4.2.1.5. Scheduling of The 3 Channels

Strict priority work-conserving scheduling is used to process both on sending and receiving (of the PL messages) by the TML Core as shown in [Figure 5 \(SCTP TML Strict Priority Scheduling\)](#).

This means that the HP messages are always processed first until there are no more left. The LP channel is processed only if a channel that is higher priority than itself has no more messages left to process. This means that under congestion situation, a higher priority channel with sufficient messages that occupy the available bandwidth would starve lower priority channel(s).

The design intent of the SCTP TML is to tie prioritization as described in [Section 4.2.1.1 \(Justifying Choice of 3 Sockets\)](#) and transport congestion control to provide implicit node congestion control. This is further detailed in [Section 5 \(Channel work scheduling\)](#).

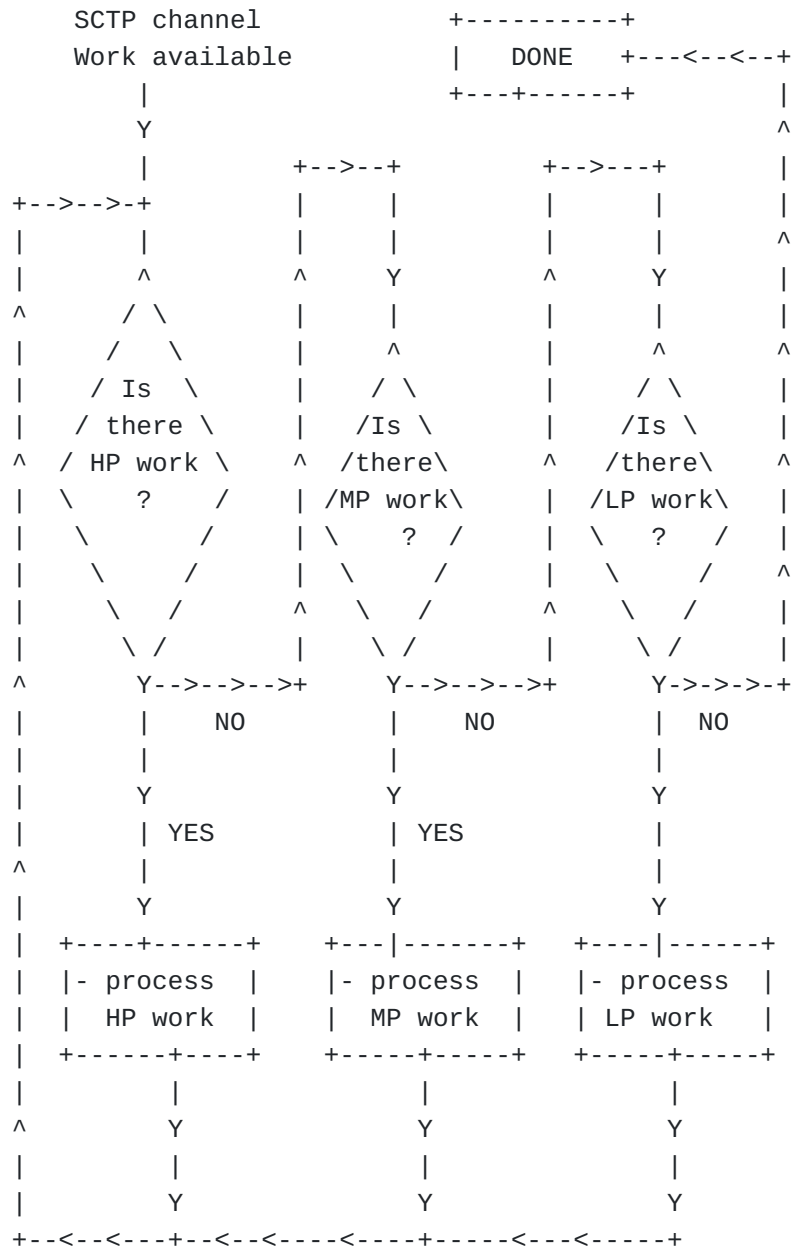


Figure 5: SCTP TML Strict Priority Scheduling

4.2.1.6. SCTP TML Parameterization

The following is a list of parameters needed for booting the TML. It is expected these parameters will be extracted via the FEM/CEM interface for each PL ID.

1. The IP address or a resolvable DNS/hostname of the CE/FE.
2. The HP SCTP port, as discussed in [Section 4.2.1.2 \(Higher Priority, Reliable channel\)](#). The default HP port value is 6700 ([Section 7 \(IANA Considerations\)](#)).
3. The MP SCTP port, as discussed in [Section 4.2.1.3 \(Medium Priority, Semi-Reliable channel\)](#). default MP port value is 6701 ([Section 7 \(IANA Considerations\)](#)).
4. The LP SCTP port, as discussed in [Section 4.2.1.4 \(Lower Priority, Unreliable channel\)](#). default LP port value is 6702 ([Section 7 \(IANA Considerations\)](#)).

4.2.2. Satisfying TML Requirements

[TOC](#)

[\[FE-PROTO\] \(Doria \(Ed.\), A., Haas \(Ed.\), R., Hadi Salim \(Ed.\), J., Khosravi \(Ed.\), H., M. Wang \(Ed.\), W., Dong, L., and R. Gopal, "ForCES Protocol Specification," November 2008.\)](#) section 5 lists requirements that a TML needs to meet. This section describes how the SCTP TML satisfies those requirements.

4.2.2.1. Satisfying Reliability Requirement

[TOC](#)

As mentioned earlier, a shade of reliability ranges is possible in SCTP. Therefore this requirement is met.

4.2.2.2. Satisfying Congestion Control Requirement

[TOC](#)

Congestion control is built into SCTP. Therefore, this requirement is met.

[TOC](#)

4.2.2.3. Satisfying Timeliness and Prioritization Requirement

By using 3 sockets in conjunction with the partial-reliability feature, both timeliness and prioritization can be achieved.

4.2.2.4. Satisfying Addressing Requirement

[TOC](#)

There are no extra headers required for SCTP to fulfil this requirement. SCTP can be told to replicast packets to multiple destinations. The TML implementation will need to translate PL level addresses, to a variety of unicast IP addresses in order to emulate multicast and broadcast PL addresses.

4.2.2.5. Satisfying HA Requirement

[TOC](#)

Transport link resiliency is one of SCTP's strongest point. Failure detection and recovery is built in, as mentioned earlier.

*The SCTP multi-homing feature is used to provide path diversity. Should one of the peer IP addresses become unreachable, the other(s) are used without needing lower layer convergence (routing, for example) or even the TML becoming aware.

*SCTP heartbeats and data transmission thresholds are used on a per peer IP address to detect reachability faults. The faults could be a result of an unreachable address or peer, which may be caused by a variety of reasons, like interface, network, or endpoint failures. The cause of the fault is noted.

*With the ADDIP feature, one can migrate IP addresses to other nodes at runtime. This is not unlike the VRRP[\[RFC3768\] \(Hinden, R., "Virtual Router Redundancy Protocol \(VRRP\)," April 2004.\)](#) protocol use. This feature is used in addition to multi-homing in a planned migration of activity from one FE/CE to another. In such a case, part of the provisioning recipe at the CE for replacing an FE involves migrating activity of one FE to another.

4.2.2.6. Satisfying DOS Prevention Requirement

[TOC](#)

Three separate channels, one per socket, are used within any FE-CE setup. The scheduling design for processing channels ([Section 4.2.1.5](#)

([Scheduling of The 3 Channels](#)) is strict priority and ties transport and node overload implicitly together. The HP channel work gets prioritized at the expense of the MP and LP channels in the presence of low processing and bandwidth resource conditions. I.e., if redirected packets (from outside the NE) attempt to overload the NE, they get assigned very low priority and obsoleted in short periods if either the CE or FE is busy processing more important work or the CE-FE path is congested. Refer to [Section 5 \(Channel work scheduling\)](#) for details.

4.2.2.7. Satisfying Encapsulation Requirement

[TOC](#)

There is no extra encapsulation added by the SCTP TML.

In the future, should the need arise, a new SCTP extension/chunk can be defined to meet newer ForCES requirements [XXX: Editorial note: provide reference to SCTP extensibility].

5. Channel work scheduling

[TOC](#)

This section provides high level details of the scheduling view of the SCTP TML core ([Section 4.2.1 \(SCTP TML Channels\)](#)). A practical scheduler implementation takes care of many little details (such as timers, work quanta, etc) not described in this document. The implementor is left to take care of those details.

The CE(s) and FE(s) are coupled together in the principles of the scheduling scheme described here to tie together node overload with transport congestion. The design intent is to provide the highest possible robust work throughput for the NE under any network or processing congestion.

XXX (Editorial note): We need to solicit feedback whether it would help implementors if we publish algorithm for the CE/FE scheduling in the form of pseudo-code.

5.1. FE Channel work scheduling

[TOC](#)

The FE scheduling, in priority order, needs to I/O process:

1. The HP channel I/O in the following priority order:
 1. Transmitting back to the CE any outstanding result of executed work via the HP channel transmit path.

2. Taking new incoming work from the CE which creates ForCES work to be executed by the FE.
2. ForCES events which result in transmission of unsolicited ForCES packets to the CE via the MP channel.
3. Incoming Redirect work in the form of control packets that come from the CE via LP channel. After redirect processing, these packets get sent out on external (to the NE) interface.
4. Incoming Redirect work in the form of control packets that come from other NEs via external (to the NE) interfaces. After some processing, such packets are sent to the CE.

It is worth emphasizing at this point again that the SCTP TML processes the channel work in strict priority. For example, as long as there are messages to send to the CE on the HP channel, they will be processed first until there are no more left before processing the next priority work (which is to read new messages on the HP channel incoming from the CE).

5.2. CE Channel work scheduling

[TOC](#)

The CE scheduling, in priority order, needs to deal with:

1. The HP channel I/O in the following priority order:
 1. Process incoming responses to requests of work it made to the FE(s).
 2. Transmitting any outstanding HP work it needs for the FE(s) to complete.
2. Incoming ForCES events from the FE(s) via the MP channel.
3. Outgoing Redirect work in the form of control packets that get sent from the CE via LP channel destined to external (to the NE) interface on FE(s).
4. Incoming Redirect work in the form of control packets that come from other NEs via external (to the NE) interfaces on the FE(s).

It is worth to repeat for emphasis again that the SCTP TML processes the channel work in strict priority. For example, if there are messages incoming from an FE on the HP channel, they will be processed first until there are no more left before processing the next priority work

which is to transmit any outstanding HP channel messages going to the FE.

6. Service Interface

[TOC](#)

XXX - Editorial Note and repeated emphasis: There is some concern (and confusion) about defining APIs in ForCES. So at the moment the future of [\[TML-API\]](#) (M. Wang, W., Hadi Salim, J., and A. Audu, "ForCES Transport Mapping Layer (TML) Service Primitives," Feb. 2007.) is unknown and we will remove references to it in future revisions of this document.

This section provides high level service interface between FEM/CEM and TML, the PL and TML, and between local and remote TMLs. The intent of this interface discussion is to provide general guidelines. The implementer is expected to worry about details and even follow a different approach if needed.

The theory of operation for the PL-TML service is as follows:

1. The PL starts up and bootstraps the TML. The end result of a successful TML bootstrap is that the CE TML and the FE TML connect to each other at the transport level.
2. Sending and reception of the PL level messages commences after a successful TML bootstrap. The PL uses send and receive PL-TML interfaces to communicate to its peers. The TML is agnostic to the nature of the messages being sent or received. The first message exchanges that happen are to establish ForCES association. Subsequent messages maybe either unsolicited events from the FE PL, control message redirects from/to the CE to/from FE, and configuration from the CE to the FE and their responses flowing from the FE to the CE.
3. The PL does a shutdown of the TML after terminating ForCES association.

6.1. TML Boot-strapping

[TOC](#)

[Figure 6 \(SCTP TML Bootstrapping\)](#) illustrates a flow for the TML bootstrapped by the PL.

When the PL starts up (possibly after some internal initialization), it boots up the TML. The TML first interacts with the FEM/CEM and acquires the necessary TML parameterization ([Section 4.2.1.6 \(SCTP TML](#)

The TML on the FE proceeds to connect the 3 channels to the CE. The socket interface is used for each of the channels. The TML continues to re-try the connections to the CE until all 3 channels are connected. It is advisable that the number of connection retry attempts and the time between each retry is also configurable via the FEM. On failure to connect one or more channels, and after the configured number of retry thresholds is exceeded, the TML will return an appropriate failure indicator to the PL. On success (as shown in [Figure 6 \(SCTP TML Bootstrapping\)](#)), a success indication is presented to the TML.

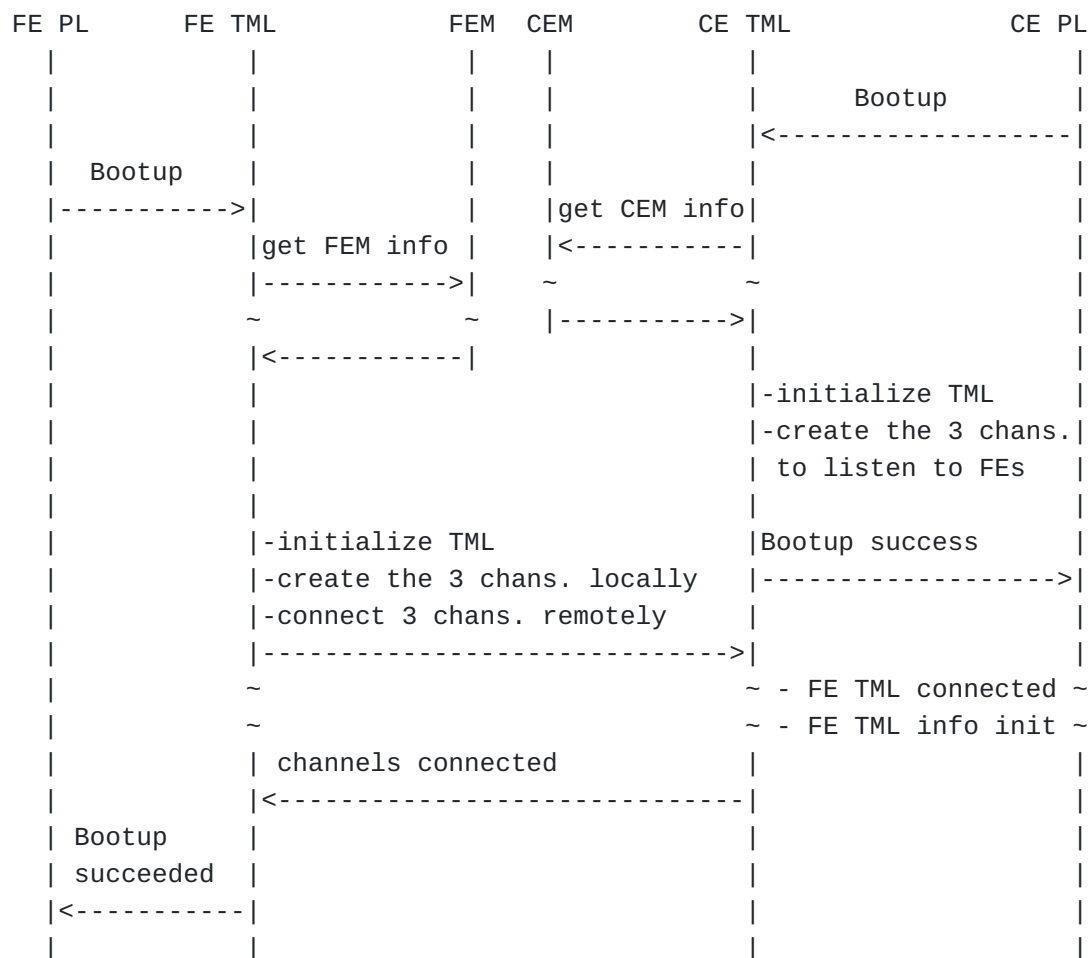


Figure 6: SCTP TML Bootstrapping

On the CE things are slightly different. After initializing from the CEM, the TML on the CE side proceeds to initialize the 3 channels to

listen to remote connections from the FEs. The success or failure indication is passed on to the CE PL level (in the same manner as was done in the FE).

Post boot-up, the CE TML waits for connections from the FEs. Upon a successful connection by an FE, the CE TML level keeps track of the transport level details of the FE. Note, at this stage only transport level connection has been established; ForCES level association follows using send/receive PL-TML interfaces (refer to [Section 6.3 \(TML Sending and Receiving\)](#) and [Figure 8 \(Send and Recv Flow\)](#)).

6.2. TML Shutdown

[TOC](#)

[Figure 7 \(FE Shutting down\)](#) shows an example of an FE shutting down the TML. It is assumed at this point that the ForCES Association Teardown has been issued by the CE.

When the FE PL issues a shutdown to its TML for a specific PL ID, the TML releases all the channel connections to the CE. This is achieved by closing the sockets used to communicate to the CE.

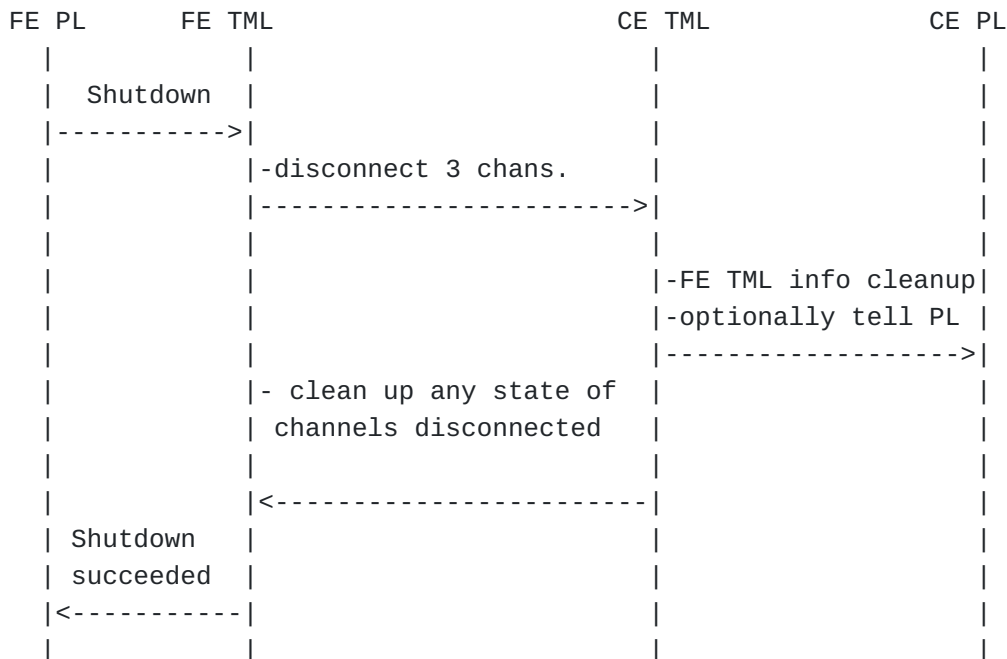


Figure 7: FE Shutting down

On the CE side, a TML level disconnection would result in possible cleanup of the FE state. Optionally, depending on the implementation, there may be need to inform the PL about the TML disconnection.

6.3. TML Sending and Receiving

[TOC](#)

The TML is agnostic to the nature of the PL message it delivers to the remote TML (which subsequently delivers the message to its PL).

[Figure 8 \(Send and Recv Flow\)](#) shows an example of a message exchange originated at the FE and sent to the CE (such as a ForCES association message) which illustrates all the necessary service interfaces for sending and receiving.

When the FE PL sends a message to the TML, the TML is expected to pick one of HP/MP/LP channels and send out the ForCES message.

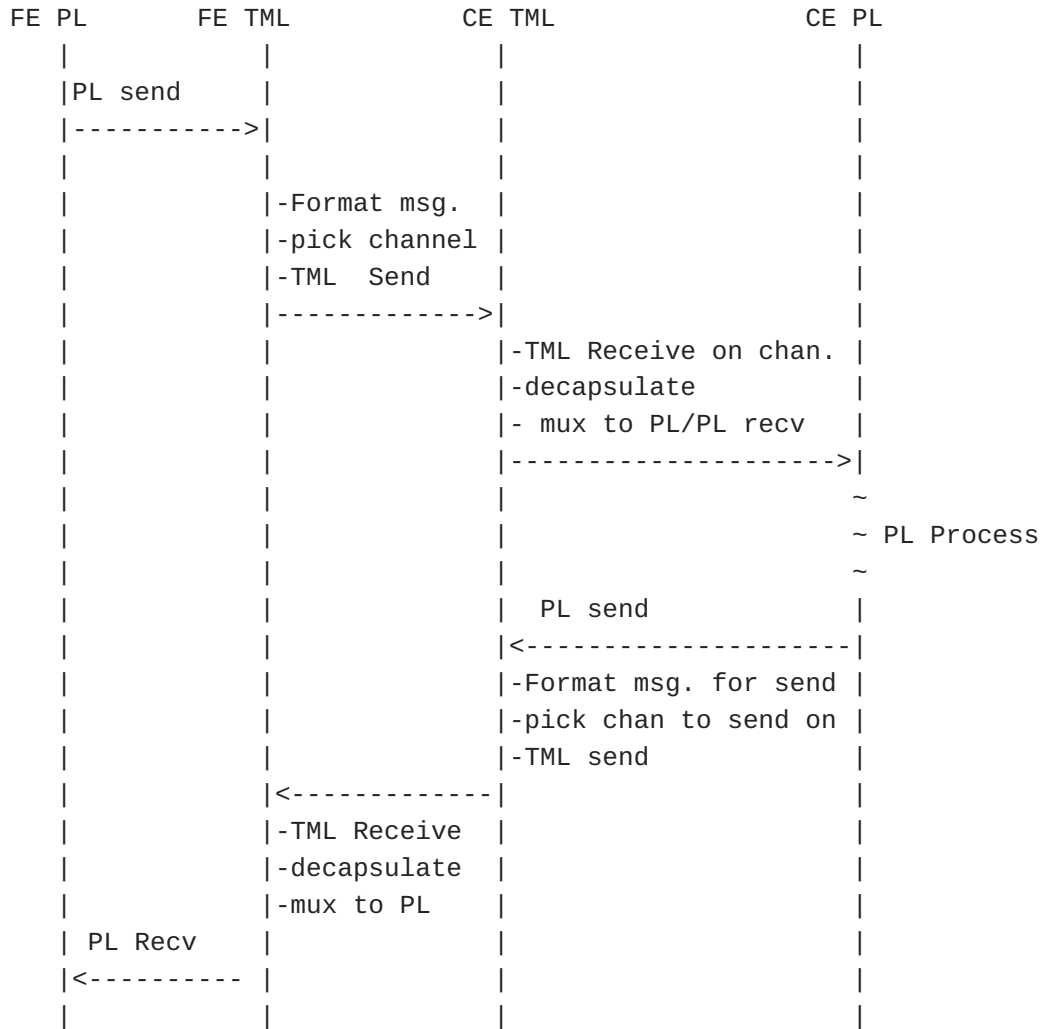


Figure 8: Send and Recv Flow

When the CE TML receives the ForCES message on the channel it was sent on, it demultiplexes the message to the CE PL. The CE PL, after some processing (in this example dealing with the FE's association), sends to the TML the response. And as in the case of FE PL, the CE TML picks the channel to send on before sending. The processing of the ForCES message upon arriving at the FE TML and delivery to the FE PL is similar to the CE side equivalent as shown above in [Section 6.3 \(TML Sending and Receiving\)](#).

7. IANA Considerations

This document makes request of IANA to reserve SCTP ports 6700, 6701, and 6702.

8. Security Considerations

[TOC](#)

The SCTP TML provides the following security services to the PL level:

- *A mechanism to authenticate ForCES CEs and FEs at transport level in order to prevent the participation of unauthorized CEs and unauthorized FEs in the control and data path processing of a ForCES NE.
- *A mechanism to ensure message authentication of PL data and headers transferred from the CE to FE (and vice-versa) in order to prevent the injection of incorrect data into PL messages.
- *A mechanism to ensure the confidentiality of PL data and headers transferred from the CE to FE (and vice-versa), in order to prevent disclosure of PL level information transported via the TML.

Security choices provided by the TML are made by the operator and take effect during the pre-association phase of the ForCES protocol. An operator may choose to use all, some or none of the security services provided by the TML in a CE-FE connection.

When operating under a secured environment, or for other operational concerns (in some cases performance issues) the operator may turn off all the security functions between CE and FE.

The operator has the choice of configuring either a combination of Transport Layer Security(TLS) [\[RFC4346\] \(Dierks, T. and E. Rescorla, "The Transport Layer Security \(TLS\) Protocol Version 1.1," April 2006.\)](#) and Datagram Transport Layer Security(DTLS) [\[RFC4347\] \(Rescorla, E. and N. Modadugu, "Datagram Transport Layer Security," April 2006.\)](#), or IP Security Protocol (IPsec) [\[RFC4301\] \(Kent, S. and K. Seo, "Security Architecture for the Internet Protocol," December 2005.\)](#) to provide needed security. It is recommended that the TLS/DTLS combination is used and only in its absence should IPsec be considered.

XXXX: Editors note: we should take note of RFC 3554 and 3436

[TOC](#)

8.1. TML Security Services using TLS and DTLS

TLS and DTLS were designed to provide the mutual authentication, message integrity and message confidentiality outlined in the TML security requirements ([\[FE-PROTO\] \(Doria \(Ed.\), A., Haas \(Ed.\), R., Hadi Salim \(Ed.\), J., Khosravi \(Ed.\), H., M. Wang \(Ed.\), W., Dong, L., and R. Gopal, "ForCES Protocol Specification," November 2008.\)](#)).

8.1.1. TLS Usage

[TOC](#)

Since in the ForCES architecture, the CE is master and FEs are slaves, the FEs are D/TLS clients and CEs are D/TLS server. The FE HP channel opens a TLS connection on SCTP port 6700. The FE MP and LP channels open DTLS connections on SCTP ports 6701 and 6702 respectively. The endpoints that implement D/TLS MUST perform mutual authentication during D/TLS session establishment process. Certificates are used to achieve mutual authentication.

We recommend TLS-RSA-with-AES-128-CBC-SHA cipher suite. Although consistency is expected it is possible for the CE or FE to negotiate other D/TLS cipher suites.

8.2. TML Security Services using IPsec

[TOC](#)

XXXX: Editors note: We should review what RFCs to list as references (eg IKEv2, ESP etc).

IPsec is an IP level security scheme transparent to the higher-layer applications and therefore can provide security for any transport layer protocol. This gives IPsec the advantage that it can be used to secure everything between the CE and FE without expecting the TML implementation to be aware of the details.

The IPsec architecture is designed to provide message integrity and message confidentiality outlined in the TML security requirements ([\[FE-PROTO\] \(Doria \(Ed.\), A., Haas \(Ed.\), R., Hadi Salim \(Ed.\), J., Khosravi \(Ed.\), H., M. Wang \(Ed.\), W., Dong, L., and R. Gopal, "ForCES Protocol Specification," November 2008.\)](#)). Mutual authentication and key exchange protocol Internet Key Exchange (IKE) [\[RFC4109\] \(Hoffman, P., "Algorithms for Internet Key Exchange version 1 \(IKEv1\)," May 2005.\)](#).

[TOC](#)

8.2.1. IPsec Usage

It is recommended that the following options be used for consistency (although it is expected to be possible for the CE or FE to negotiate other cipher suites):

*Internet Key Exchange (IKE) [\[RFC4109\]](#) (Hoffman, P., "Algorithms for Internet Key Exchange version 1 (IKEv1)," May 2005.) with certificates for endpoint authentication.

*Transport Mode Encapsulating Security Payload (ESP)

*HMAC-SHA1-96 [\[RFC2404\]](#) (Madson, C. and R. Glenn, "The Use of HMAC-SHA-1-96 within ESP and AH," November 1998.) for message integrity protection

*AES-CBC with 128-bit keys [\[RFC3602\]](#) (Frankel, S., Glenn, R., and S. Kelly, "The AES-CBC Cipher Algorithm and Its Use with IPsec," September 2003.) for message confidentiality.

9. Manageability Considerations

[TOC](#)

TBA

10. Acknowledgements

[TOC](#)

The authors would like to thank Joel Halpern, Michael Tuxen and Randy Stewart for engaging us in discussions that have made this draft better.

11. References

[TOC](#)

11.1. Normative References

[TOC](#)

[RFC2404]	Madson, C. and R. Glenn , "The Use of HMAC-SHA-1-96 within ESP and AH," RFC 2404, November 1998 (TXT , HTML , XML).
[RFC2434]	

	Narten, T. and H. Alvestrand , " Guidelines for Writing an IANA Considerations Section in RFCs ," BCP 26, RFC 2434, October 1998 (TXT , HTML , XML).
[RFC2960]	Stewart, R., Xie, Q., Morneault, K., Sharp, C., Schwarzbauer, H., Taylor, T., Rytina, I., Kalla, M., Zhang, L., and V. Paxson, " Stream Control Transmission Protocol ," RFC 2960, October 2000 (TXT).
[RFC3602]	Frankel, S., Glenn, R., and S. Kelly, " The AES-CBC Cipher Algorithm and Its Use with IPsec ," RFC 3602, September 2003 (TXT).
[RFC3654]	Khosravi, H. and T. Anderson, " Requirements for Separation of IP Control and Forwarding ," RFC 3654, November 2003 (TXT).
[RFC3746]	Yang, L., Dantu, R., Anderson, T., and R. Gopal, " Forwarding and Control Element Separation (ForCES) Framework ," RFC 3746, April 2004 (TXT).
[RFC4109]	Hoffman, P., " Algorithms for Internet Key Exchange version 1 (IKEv1) ," RFC 4109, May 2005 (TXT).
[RFC4301]	Kent, S. and K. Seo, " Security Architecture for the Internet Protocol ," RFC 4301, December 2005 (TXT).
[RFC4346]	Dierks, T. and E. Rescorla, " The Transport Layer Security (TLS) Protocol Version 1.1 ," RFC 4346, April 2006 (TXT).
[RFC4347]	Rescorla, E. and N. Modadugu, " Datagram Transport Layer Security ," RFC 4347, April 2006 (TXT).
[RFC5061]	Stewart, R., Xie, Q., Tuexen, M., Maruyama, S., and M. Kozuka, " Stream Control Transmission Protocol (SCTP) Dynamic Address Reconfiguration ," RFC 5061, September 2007 (TXT).

11.2. Informative References

[TOC](#)

[FE-MODEL]	Halpern, J. and J. Hadi Salim, "ForCES Forwarding Element Model," October 2008.
[FE-PROTO]	Doria (Ed.), A., Haas (Ed.), R., Hadi Salim (Ed.), J., Khosravi (Ed.), H., M. Wang (Ed.), W., Dong, L., and R. Gopal, "ForCES Protocol Specification," November 2008.
[TML-API]	M. Wang, W., Hadi Salim, J., and A. Audu, "ForCES Transport Mapping Layer (TML) Service Primitives," Feb. 2007.

Authors' Addresses

[TOC](#)

	Jamal Hadi Salim
	Mojatatu Networks
	Ottawa, Ontario

	Canada
Email:	hadi@mojatatu.com
	Kentaro Ogawa
	NTT Corporation
	3-9-11 Midori-cho
	Musashino-shi, Tokyo 180-8585
	Japan
Email:	ogawa.kentaro@lab.ntt.co.jp