

GEOPRIV  
Internet-Draft  
Updates: [5222](#), 4776 (if approved)  
Intended status: Standards Track  
Expires: June 4, 2013

J. Winterbottom  
CommScope  
M. Thomson  
Skype  
R. Barnes  
BBN Technologies  
B. Rosen  
NeuStar, Inc.  
R. George  
Huawei Technologies  
Dec 2012

**Specifying Civic Address Extensions in PIDF-LO  
draft-ietf-geopriv-local-civic-10**

Abstract

New fields are occasionally added to civic addresses. A backwardly-compatible mechanism for adding civic address elements to the Geopriv civic address format is described. A formal mechanism for handling unsupported extensions when translating between XML and DHCP civic address forms is defined for entities that need to perform this translation. Initial extensions for some new elements are also defined. The LoST ([RFC5222](#)) protocol mechanism that returns civic address element names used for validation of location information is clarified and is normatively updated to require a qualifying namespace identifier on each civic address element returned as part of the validation process.

Status of this Memo

This Internet-Draft is submitted in full conformance with the provisions of [BCP 78](#) and [BCP 79](#).

Internet-Drafts are working documents of the Internet Engineering Task Force (IETF). Note that other groups may also distribute working documents as Internet-Drafts. The list of current Internet-Drafts is at <http://datatracker.ietf.org/drafts/current/>.

Internet-Drafts are draft documents valid for a maximum of six months and may be updated, replaced, or obsoleted by other documents at any time. It is inappropriate to use Internet-Drafts as reference material or to cite them other than as "work in progress."

This Internet-Draft will expire on June 4, 2013.

Copyright Notice

Copyright (c) 2012 IETF Trust and the persons identified as the document authors. All rights reserved.

This document is subject to [BCP 78](#) and the IETF Trust's Legal Provisions Relating to IETF Documents (<http://trustee.ietf.org/license-info>) in effect on the date of publication of this document. Please review these documents carefully, as they describe your rights and restrictions with respect to this document. Code Components extracted from this document must include Simplified BSD License text as described in Section 4.e of the Trust Legal Provisions and are provided without warranty as described in the Simplified BSD License.

## Table of Contents

<a href="#">1.</a>	<a href="#">Introduction . . . . .</a>	<a href="#">3</a>
<a href="#">1.1.</a>	<a href="#">Motivating Example . . . . .</a>	<a href="#">4</a>
<a href="#">1.2.</a>	<a href="#">Terminology . . . . .</a>	<a href="#">4</a>
<a href="#">2.</a>	<a href="#">Specifying Civic Address Extensions . . . . .</a>	<a href="#">5</a>
<a href="#">3.</a>	<a href="#">Translating Unsupported Elements . . . . .</a>	<a href="#">6</a>
<a href="#">3.1.</a>	<a href="#">XML to DHCP Format Translation . . . . .</a>	<a href="#">6</a>
<a href="#">3.2.</a>	<a href="#">Extension Civic Address Type (CAtype) . . . . .</a>	<a href="#">6</a>
<a href="#">3.3.</a>	<a href="#">DHCP to XML Format Translation . . . . .</a>	<a href="#">7</a>
<a href="#">3.4.</a>	<a href="#">Conversion Example . . . . .</a>	<a href="#">8</a>
<a href="#">4.</a>	<a href="#">CAtypes Registry . . . . .</a>	<a href="#">8</a>
<a href="#">5.</a>	<a href="#">Civic Extensions . . . . .</a>	<a href="#">9</a>
<a href="#">5.1.</a>	<a href="#">Pole Number . . . . .</a>	<a href="#">9</a>
<a href="#">5.2.</a>	<a href="#">Mile Post . . . . .</a>	<a href="#">10</a>
<a href="#">5.3.</a>	<a href="#">Street Type Prefix . . . . .</a>	<a href="#">10</a>
<a href="#">5.4.</a>	<a href="#">House Number Prefix . . . . .</a>	<a href="#">10</a>
<a href="#">5.5.</a>	<a href="#">XML Extension Schema . . . . .</a>	<a href="#">11</a>
<a href="#">5.6.</a>	<a href="#">Extension examples . . . . .</a>	<a href="#">11</a>
<a href="#">6.</a>	<a href="#">Using Local Civic Extension with the LoST Protocol . . . . .</a>	<a href="#">12</a>
<a href="#">7.</a>	<a href="#">Security Considerations . . . . .</a>	<a href="#">13</a>
<a href="#">8.</a>	<a href="#">IANA Considerations . . . . .</a>	<a href="#">13</a>
<a href="#">8.1.</a>	<a href="#">CAtype Registration for Extensions . . . . .</a>	<a href="#">14</a>
<a href="#">8.2.</a>	<a href="#">Changes to the CAtype Registry . . . . .</a>	<a href="#">14</a>
<a href="#">8.3.</a>	<a href="#">Registration Template . . . . .</a>	<a href="#">15</a>
<a href="#">8.4.</a>	<a href="#">Registration of the CAtypes defined in this document . . . . .</a>	<a href="#">15</a>
<a href="#">8.5.</a>	<a href="#">Registration Policy and Expert Guidance . . . . .</a>	<a href="#">16</a>
<a href="#">8.6.</a>	<a href="#">URN sub-namespace registration . . . . .</a>	<a href="#">17</a>
<a href="#">8.7.</a>	<a href="#">XML Schema Registration . . . . .</a>	<a href="#">18</a>
<a href="#">9.</a>	<a href="#">Acknowledgements . . . . .</a>	<a href="#">18</a>
<a href="#">10.</a>	<a href="#">References . . . . .</a>	<a href="#">18</a>
<a href="#">10.1.</a>	<a href="#">Normative References . . . . .</a>	<a href="#">18</a>
<a href="#">10.2.</a>	<a href="#">Informative References . . . . .</a>	<a href="#">19</a>
	<a href="#">Authors' Addresses . . . . .</a>	<a href="#">19</a>



## 1. Introduction

The Geopriv civic location specifications ([RFC4776], [RFC5139]) define an XML and binary representations for civic addresses that allow for the expression of civic addresses. Guidance for the use of these formats for the civic addresses in different countries is included in [RFC5774].

Subsequent to these specifications being produced, use cases for extending the civic address format with new elements have emerged. [RFC5774] describes a mechanism for mapping long-standing address formats into the civic address elements defined in [RFC4776] and [RFC5139]. However, some of these existing address elements do not readily fit into the civic address elements defined in [RFC4776] and [RFC5139]. In these cases creating new civic address elements provides a better solution than overloading existing civic address fields which may cause confusion.

The XML format for civic addresses [RFC5139] provides a mechanism that allows for the addition of standardized or privately understood elements. A similar facility for private extension is not provided for the DHCP format [RFC4776], though new specifications are able to define new CATypes (civic address types).

A recipient of a civic address in either format currently has no option other than to ignore elements that it does not understand. This results in any elements that are unknown to that recipient being discarded if a recipient performs a translation between the two formats. In order for a new extension to be preserved through translation by any recipient, the recipient has to understand the extension and know how to correlate an XML element with a CAtype.

This document describes how new civic address elements are added. Extensions always starts with the definition of XML elements. A mechanism for carrying the extension in the DHCP format is described. A new XML namespace containing a small number of additional civic elements is also defined and can be used as a template to illustrate how other extensions can be defined as required.

These mechanisms ensure that any translation between formats can be performed consistently and without loss of information. Translation between formats can occur without knowledge of every extension that is present.

The registry of numeric CATypes is modified so that creators of extensions can advertise new namespaces and the civic elements to encourage maximum reuse.



The additions described in this document are backwardly compatible. Existing implementations may cause extension information to be lost, but the presence of extensions does not affect an implementation that conforms to either [\[RFC4776\]](#) or [\[RFC5139\]](#).

This document also normatively updates [\[RFC5222\]](#) to clarify that the namespace must be included with the element name in the lists of valid, invalid and not checked elements in the <locationValidation> part of a LoST response. While the LoST schema does not need to be changed, the example in the document is updated to show the namespaces in the lists.

### **[1.1.](#) Motivating Example**

One instance where translation might be necessary is where a device receives location configuration using DHCP [\[RFC4776\]](#). Conversion of DHCP information to an XML form is necessary if the device wishes to use the DHCP-provided information in a range of applications, including location-based presence services [\[RFC4079\]](#), and emergency calling [\[RFC5012\]](#).

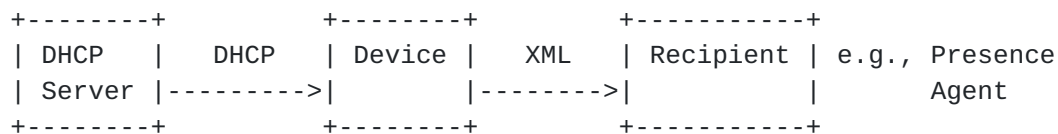


Figure 1: Conversion Scenario

The Device that performs the translation between the DHCP and XML formats might not be aware of some of the extensions that are in use. Without knowledge of these extensions and how they are represented in XML, the Device is forced to discard them.

These extensions could be useful, or may be critical, to the ultimate consumers of this information. For instance, an extension element might provide a presence watcher with important information in locating the Device, or an extension might be significant in choosing a particular call route.

### **[1.2.](#) Terminology**

The key words "MUST", "MUST NOT", "REQUIRED", "SHALL", "SHALL NOT", "SHOULD", "SHOULD NOT", "RECOMMENDED", "MAY", and "OPTIONAL" in this document are to be interpreted as described in [\[RFC2119\]](#).



## 2. Specifying Civic Address Extensions

The civic schema in [RFC5139] defines an ordered structure of elements that can be combined to describe a civic address. The XML extension point at the end of this sequence is used to extend the address.

New elements are defined in a new XML namespace [XMLNS]. This is true of address elements with significance within private or localized domains, as well as those that are intended for global applicability.

New elements SHOULD use the basic "caType" schema type defined in [RFC5139]. This type provides an optional "xml:lang" attribute.

For example, suppose the (fictitious) Central Devon Canals Authority wishes to introduce a new civic element called "bridge". The authority defines an XML namespace that includes a "bridge" element. The namespace needs to be a unique URI, for example "http://devon.canals.example.com/civic".

A civic address that includes the new "bridge" element is shown in Figure 2.

```
<civicAddress xml:lang="en-GB"
  xmlns="urn:ietf:params:xml:ns:pidf:geopriv10:civicAddr"
  xmlns:cdc="http://devon.canals.example.com/civic">
  <country>UK</country>
  <A1>Devon</A1>
  <A3>Monkokehampton</A3>
  <RD>Deckport</RD>
  <STS>Cross</STS>

  <cdc:bridge>21451338</cdc:bridge>

</civicAddress>
```

Figure 2: Extended Civic Address Example

An entity that receives this location information might not understand the extension address element. As long as the added element is able to be safely ignored, the remainder of the civic address can be used. The result is that the information is not as useful as it could be, but the added element does not prevent the use of the remainder of the address.

The address can be passed to other applications, such as a LoST server [RFC5222], without modification. If the application





understands the added element(s), it is able to make use of that information. For example, if this civic address is acquired using HELD [[RFC5985](#)], it can be included in a LoST request directly.

### **3. Translating Unsupported Elements**

Unsupported civic address elements can be carried without consequence as long as the format of the address does not change. However, conversion between formats has been shown to be necessary.

Format conversion required knowledge of the format of the address elements. An entity performing a conversion between XML and DHCP address formats was forced to discard unrecognized elements. The entity performing the conversion had no way to know the correct element to use in the target format.

This document defines a single extension element for the DHCP format that makes knowledge of extensions unnecessary during conversion. This extension element relies on the extension mechanisms defined for the XML format. New extensions to the civic address format **MUST** be defined only for the XML format; these extensions are then conveyed in DHCP using the extension element.

Further extensions to the DHCP format are prohibited: these extensions cannot be safely conveyed in environments where conversion is possible.

#### **3.1. XML to DHCP Format Translation**

Extensions to the XML format [[RFC5139](#)] are defined in a new XML namespace [[XMLNS](#)]. The XML namespace received in DHCP is expressed as a URL, however, it should not be dereferenced or treated as a source location for the actual schema and doing so will serve no useful purpose.

Extensions in the XML format can be added to a DHCP format civic address using an extension CAtype.

#### **3.2. Extension Civic Address Type (CAtype)**

The extension CAtype (CAtype code XX) [Note to IANA/RFC-Editor: please replace XX here and in Figure 3 and in Figure 5 with the assigned code] includes three values that uniquely identify the XML extension and its value: a namespace URI, the local name of the XML element, and the text content of that element. These three values are all included in the value of the CAtype, each separated by a single whitespace character.







new civic elements be described in DHCP form by carrying the namespace and type name of the extension in parameters of the extensionCA type.

When converting to XML, the namespace prefix used for the extension element is selected by the entity that performs the conversion.

### 3.4. Conversion Example

The following example civic address contains two extensions:

```
<civicAddress xml:lang="en-US"
  xmlns="urn:ietf:params:xml:ns:pidf:geopriv10:civicAddr"
  xmlns:post="http://postsoftheworld.example.com/ns"
  xmlns:ap="http://example.com/airport/5.0">
  <country>US</country>
  <A1>CA</A1>

  <post:lamp>2471</post:lamp>
  <post:pylon>AQ-374-4(c)</post:pylon>

  <ap:airport>LAX</ap:airport>
  <ap:terminal>Tom Bradley</ap:terminal>
  <ap:concourse>G</ap:concourse>
  <ap:gate>36B</ap:gate>
</civicAddress>
```

Figure 4: XML Example with Multiple Extensions

This is converted to a DHCP form as follows:

```
country      = US
CAtype[0]    = en-US
CAtype[1]    = CA
CAtype[XX]   = http://postsoftheworld.example.com/ns lamp 2471
CAtype[XX]   = http://postsoftheworld.example.com/ns pylon AQ-374-4(c)
CAtype[XX]   = http://example.com/airport/5.0 airport LAX
CAtype[XX]   = http://example.com/airport/5.0 terminal Tom Bradley
CAtype[XX]   = http://example.com/airport/5.0 concourse G
CAtype[XX]   = http://example.com/airport/5.0 gate 36B
```

Figure 5: Converted DHCP Example with Multiple Extensions

## 4. CAtypes Registry

[RFC4776] created the CAtype registry. Among other things, this registry advertised available civic elements. While it has always



been possible to use an extension namespace to define civic elements that are not in the CAtype registry, and this document does not change that, the registry is valuable to alert implementors of commonly used civic elements and provides guidance to clients of what elements they should support.

This document alters the CAtype registry in several ways. It closes the registry to new numeric CAtypes. It deletes the "NENA" column, which is not needed. It adds columns for a namespace and contact, and changes the name of the column currently called "PIDF" to "Local Name". It also adds a column to the registry called "Type". "Type" can have one of two values "A" and "B". Type A elements are intended for wide use with many applications and SHOULD be implemented by all clients unless the client is certain the element will not be encountered. Type "B" civic elements MAY be implemented by any client.

Type A civic elements require IETF review, while Type B elements only require an expert review.

## **5. Civic Extensions**

We use this new extension method to define some additional civic address elements which are needed to correctly encode civic locations in several countries. The definition of these new civic address elements also serves as an example of how to define additional elements using the mechanisms described in this document.

### **5.1. Pole Number**

In some areas, utility and lamp posts carry a unique identifier, which we call a pole number in this document. In some countries, the label on the lamp post also carries the local emergency service number, such as "110", encouraging callers to use the pole number to identify their location.





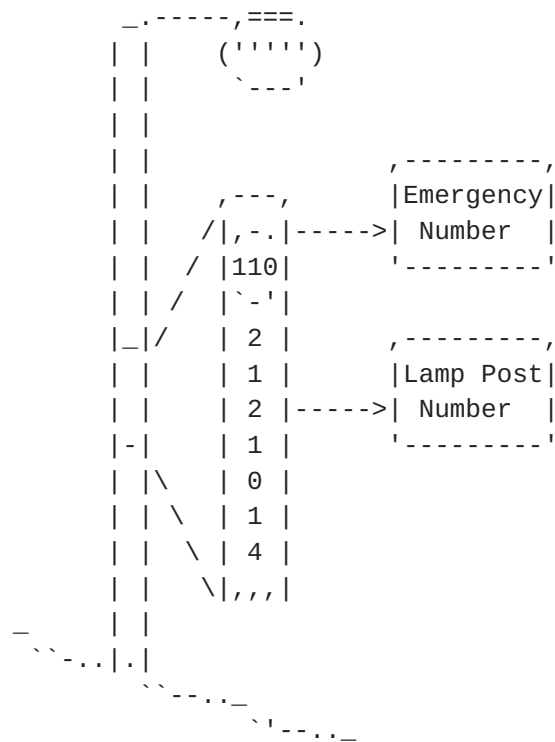


Figure 6: Lamp post with emergency number

## 5.2. Mile Post

On some roads, trails, railroad rights of way and other linear features, a post with a mile or kilometer distance from one end of the feature may be found (a "milepost"). There are other cases of poles or markers with numeric indications that are not the same as a "house number" or street address number.

### 5.3. Street Type Prefix

The civic schema defined in [\[RFC5139\]](#) allows the definition of address "123 Colorado Boulevard", but it does not allow for the easy expression of "123 Boulevard Colorado". Adding a street-type prefix, allows street named in this manner to be more easily represented.

#### 5.4. House Number Prefix

The civic schema defined in [\[RFC5139\]](#) provides house number suffix element, allowing one to express an address like "123A Main Street", but it does not contain a corresponding house number prefix. The house number prefix element allows the expression of address such as "Z123 Main Street".



### 5.5. XML Extension Schema

```
<?xml version="1.0"?>
<xs:schema
  targetNamespace="urn:ietf:params:xml:ns:pidf:geopriv10:civicAddr:ext"
  xmlns:ca="urn:ietf:params:xml:ns:pidf:geopriv10:civicAddr"
  xmlns:xs="http://www.w3.org/2001/XMLSchema"
  xmlns:cae="urn:ietf:params:xml:ns:pidf:geopriv10:civicAddr:ext"
  xmlns:xml="http://www.w3.org/XML/1998/namespace"
  elementFormDefault="qualified" attributeFormDefault="unqualified">

  <xs:import namespace="urn:ietf:params:xml:pidf:geopriv10:civicAddr"/>

  <!-- Post Number -->
  <xs:element name="PN" type="ca:caType"/>

  <!-- Milepost -->
  <xs:element name="MP" type="ca:caType"/>

  <!-- Street-Type prefix -->
  <xs:element name="STP" type="ca:caType"/>

  <!-- House Number Prefix -->
  <xs:element name="HNP" type="ca:caType"/>

</xs:schema>
```

### 5.6. Extension examples

```
<civicAddress xml:lang="en-US"
  xmlns="urn:ietf:params:xml:ns:pidf:geopriv10:civicAddr"
  xmlns:cae="urn:ietf:params:xml:ns:pidf:geopriv10:civicAddr:ext">
  <country>US</country>
  <A1>CA</A1>
  <A2>Sacramento</A2>
  <RD>I5</RD>
  <cae:MP>248</cae:MP>
  <cae:PN>22-109-689</cae:PN>
</civicAddress>
```

XML Example with Post Number and Mile Post



```
<civicAddress xml:lang="en-US"
  xmlns="urn:ietf:params:xml:ns:pidf:geopriv10:civicAddr"
  xmlns:cae="urn:ietf:params:xml:ns:pidf:geopriv10:civicAddr:ext">
  <country>US</country>
  <A1>CA</A1>
  <A2>Sacramento</A2>
  <RD>Colorado</RD>
  <HNO>223</HNO>
  <cae:STP>Boulevard</cae:STP>
  <cae:HNP>A</cae:HNP>
</civicAddress>
```

XML Example with Street prefix and House Number Prefix

## 6. Using Local Civic Extension with the LoST Protocol

One critical use of civic location information is in next generation emergency services applications, in particular call routing applications. In such cases location information is provided to a location-based routing service using the location to service transtion (LoST) protocol [[RFC5222](#)]. LoST is used to provide call routing information, but it is also used to validate location information to ensure that it can route to an emergency center when required.

LoST is an XML-based protocol and so the namespace extension mechanisms described in this document do not impact LoST. When LoST is used for validation a <locationValidation> element is returned containing a list of valid, a list of invalid, and a list of unchecked civic elements. Figure 7 is an extract of the validation response in Figure 6 from [[RFC5222](#)].

```
<locationValidation>
  <valid>country A1 A3 A6</valid>
  <invalid>PC</invalid>
  <unchecked>HNO</unchecked>
</locationValidation>
```

Figure 7: Location Validation Example from LoST ([RFC5222](#))

The RelaxNG schema in [[RFC5222](#)] requires the elements in each of these lists to be namespace qualified, which makes the example in Figure 6 from [[RFC5222](#)] in error. This issue is especially significant when local-civic extensions are used as the domain to which the extensions are attributed may impact their interpretation by the server or client. To ensure that local-civic extensions do



not cause issues with LoST server and client implementations, all elements listed in a <valid>, <invalid>, or <unchecked> element MUST be qualified with a namespace. To illustrate this the extract above from figure 6 in [\[RFC5222\]](#) becomes Figure 8.

```
<locationValidation
  xmlns:ca="urn:ietf:params:xml:ns:pidf:geopriv10:civicAddr">
  <valid>ca:country ca:A1 ca:A3 ca:A6</valid>
  <invalid>ca:PC</invalid>
  <unchecked>ca:HNO</unchecked>
</locationValidation>
```

Figure 8: Corrected Location Validation Example

If a validation request has also included the extensions defined in section [Section 5](#) then the validation response would look like Figure 9.

```
<locationValidation
  xmlns:ca="urn:ietf:params:xml:ns:pidf:geopriv10:civicAddr"
  xmlns:cae="urn:ietf:params:xml:ns:pidf:geopriv10:civicAddr:ext">
  <valid>ca:country ca:A1 ca:A3 ca:A6 cae:PN cae:STP</valid>
  <invalid>ca:PC</invalid>
  <unchecked>ca:HNO cae:MP cae:HNP</unchecked>
</locationValidation>
```

Figure 9: Corrected Location Validation Example

## [7.](#) Security Considerations

This document defines a formal way to extend the existing Geopriv civic address schema. While no security threats are directly introduced by this document, creators of new civic address extensions should refer to sections [4.3.1](#) and [5.1](#) of [\[RFC3694\]](#) to understand the environments in which these new elements will be used. New elements should only be registered if the person or organization performing the registration understands any associated risks.

Security threats applicable to the civic address formats are described in [\[RFC4776\]](#) (DHCP) and [\[RFC5139\]](#) (XML).

## [8.](#) IANA Considerations

This document alters the "CAtypes" registry on the "Civic Address





Types Registry" page established by [[RFC4776](#)].

### **[8.1.](#) CAtype Registration for Extensions**

IANA has allocated a CAtype code of XX for the extension CAtype. Registrations using this code will be made below, in [Section 8.4](#).

### **[8.2.](#) Changes to the CAtype Registry**

IANA is asked to make the following changes to the CAtype registry:

- o No registrations of new CAtype numbers in the Civic Address Types Registry are permitted, except by IESG Approval [[RFC5226](#)] under unusual circumstances.
- o The following note will be placed in the header of the CAtypes registry, above the table:

Note: As specified in [[this RFC]], new registrations are only accepted for CAtype XX, using the template specified in [Section 8.3](#).

- o The registration procedures are changed: IETF Review (if Type=A), Expert Review (if Type=B). The designated expert is unchanged.
- o The reference for the table is changed: [[RFC4776](#)], [[this RFC]]
- o The column called "NENA" is removed.
- o The column called "PIDF" is renamed to "Local Name".
- o New columns are added named "Namespace URI", "Contact", "Schema" and "Type". All existing entries will have the following values for those new columns:

Namespace URI: urn:ietf:params:xml:ns:pidf:geopriv10:civicAddr

Contact: The IESG (iesg@ietf.org); the GEOPRIV working group (geopriv@ietf.org)

Schema: urn:ietf:params:xml:schema:pidf:geopriv10:civicAddr

Type: A



### **8.3. Registration Template**

New registrations in the Civic Address Types Registry require the following information:

CAtype: The assigned numeric CAtype. All new registrations will use the value XX.

Namespace URI: A unique identifier for the XML namespace used for the extension element.

Local Name: The local name of an XML element that carries the civic address element.

Description: A brief description of the semantics of the civic address element.

Example (optional): One or more simple examples of the element.

Contact: Contact details for the person providing the extension.

Specification (optional): A reference to a specification for the civic address element.

Schema (optional): A reference to a formal schema (XML schema, RelaxNG, or other form) that defines the extension.

Type: "A" or "B".

If Type is "A", all clients SHOULD implement this element. If Type is "B", clients MAY implement this element.

### **8.4. Registration of the CATypes defined in this document**

This section registers the following four new CATypes in the Civic Address Types Registry.

Post Number (see [Section 5.1](#)):

CAtype: XX

Namespace URI: urn:ietf:params:xml:ns:pidf:geopriv10:civicAddr:ext

Local Name: PN

Description: Post number that is attributed to a lamp post or utility pole.

Contact: The IESG (iesg@ietf.org); the GEOPRIV working group (geopriv@ietf.org)



Specification: [[this RFC]], [Section 5](#)

Schema: urn:ietf:params:xml:schema:pidf:geopriv10:civicAddr:ext

Type: A

Mile Post (see [Section 5.2](#)):

CAtype: XX

Namespace URI: urn:ietf:params:xml:ns:pidf:geopriv10:civicAddr:ext

Local Name: MP

Description: Mile Post a marker indicating distance to or from a place (often a town).

Contact: The IESG (iesg@ietf.org); the GEOPRIV working group (geopriv@ietf.org)

Specification: [[this RFC]], [Section 5](#)

Schema: urn:ietf:params:xml:schema:pidf:geopriv10:civicAddr:ext

Type: A

Street Type Prefix (see [Section 5.3](#)):

CAtype: XX

Namespace URI: urn:ietf:params:xml:ns:pidf:geopriv10:civicAddr:ext

Local Name: STP

Description: Street Type Prefix.

Contact: The IESG (iesg@ietf.org); the GEOPRIV working group (geopriv@ietf.org)

Specification: [[this RFC]], [Section 5](#)

Schema: urn:ietf:params:xml:schema:pidf:geopriv10:civicAddr:ext

Type: A

House Number Prefix (see [Section 5.4](#)):

CAtype: XX

Namespace URI: urn:ietf:params:xml:ns:pidf:geopriv10:civicAddr:ext

Local Name: HNP

Description: House Number Prefix.

Contact: The IESG (iesg@ietf.org); the GEOPRIV working group (geopriv@ietf.org)

Specification: [[this RFC]], [Section 5](#)

Schema: urn:ietf:params:xml:schema:pidf:geopriv10:civicAddr:ext

Type: A

## **[8.5](#). Registration Policy and Expert Guidance**

The "CAtypes" registry is altered to operate on a registration policy of "Expert Review", and optionally "Specification Required" [[RFC5226](#)] if the element being registered has a Type value of "B".

The registration rules for "Specification Required" are followed only if a registration includes a reference to a specification. Registrations can be made without a specification reference.



If the element being registered has a Type value of "A" then the registration policy is "IETF Review" [[RFC5226](#)].

All registrations are reviewed to identify potential duplication between registered elements. Duplicated semantics are not prohibited in the registry, though it is preferred if existing elements are used. The expert review is advised to recommend the use of existing elements following the guidance in [[RFC5774](#)]. Any registration that is a duplicate or could be considered a close match for the semantics of an existing element SHOULD include a discussion of the reasons that the existing element was not reused.

[RFC6280] provides a comprehensive framework concerning the privacy of location information as pertaining to its use in Internet applications. The expert reviewer is asked to keep the spirit of this document in mind when reviewing new CAtype registrations.

#### **[8.6.](#) URN sub-namespace registration**

This document calls for IANA to register a new XML namespace, as per the guidelines in [[RFC3688](#)].

URI: urn:ietf:params:xml:ns:pidf:geopriv10:civicAddr:ext

Registrant Contact: IETF GEOPRIV working group, (geopriv@ietf.org),  
James Winterbottom (james.Winterbottom@commscope.com)

XML:

BEGIN

```
<?xml version="1.0"?>
<!DOCTYPE html PUBLIC "-//W3C//DTD XHTML 1.0 Strict//EN"
  "http://www.w3.org/TR/xhtml1/DTD/xhtml1-strict.dtd">
<html xmlns="http://www.w3.org/1999/xhtml" xml:lang="en">
  <head>
    <title>GEOPRIV Civic Address Extensions</title>
  </head>
  <body>
    <h1>Additional Fields for GEOPRIV Civic Address</h1>
    <h2>urn:ietf:params:xml:ns:pidf:geopriv10:civicAddr:ext</h2>
    <p>See <a href="[[RFC URL]]">RFCXXXX</a>.</p>
  </body>
</html>
```

END





### **8.7. XML Schema Registration**

This section registers an XML schema as per the procedures in [\[RFC3688\]](#)

URI: urn:ietf:params:xml:schema:pidf:geopriv10:civicAddr:ext

Registrant Contact: IETF GEOPRIV working group, (geopriv@ietf.org),  
James Winterbottom (james.Winterbottom@commscope.com)

XML: The XML for this schema can be found as the entirety of [Section 5.5](#) of this document.

## **9. Acknowledgements**

Thanks to anyone who has tried to extend the civic schema and found it a little less than intuitive.

## **10. References**

### **10.1. Normative References**

- [RFC2119] Bradner, S., "Key words for use in RFCs to Indicate Requirement Levels", [BCP 14](#), [RFC 2119](#), March 1997.
- [RFC3629] Yergeau, F., "UTF-8, a transformation format of ISO 10646", STD 63, [RFC 3629](#), November 2003.
- [RFC3688] Mealling, M., "The IETF XML Registry", [BCP 81](#), [RFC 3688](#), January 2004.
- [RFC3694] Danley, M., Mulligan, D., Morris, J., and J. Peterson, "Threat Analysis of the Geopriv Protocol", [RFC 3694](#), February 2004.
- [RFC4776] Schulzrinne, H., "Dynamic Host Configuration Protocol (DHCPv4 and DHCPv6) Option for Civic Addresses Configuration Information", [RFC 4776](#), November 2006.
- [RFC5139] Thomson, M. and J. Winterbottom, "Revised Civic Location Format for Presence Information Data Format Location Object (PIDF-LO)", [RFC 5139](#), February 2008.
- [RFC5222] Hardie, T., Newton, A., Schulzrinne, H., and H. Tschofenig, "LoST: A Location-to-Service Translation Protocol", [RFC 5222](#), August 2008.



- [RFC5226] Narten, T. and H. Alvestrand, "Guidelines for Writing an IANA Considerations Section in RFCs", [BCP 26](#), [RFC 5226](#), May 2008.
- [RFC6280] Barnes, R., Lepinski, M., Cooper, A., Morris, J., Tschofenig, H., and H. Schulzrinne, "An Architecture for Location and Location Privacy in Internet Applications", [BCP 160](#), [RFC 6280](#), July 2011.
- [XMLNS] Hollander, D., Layman, A., Tobin, R., and T. Bray, "Namespaces in XML 1.1 (Second Edition)", World Wide Web Consortium Recommendation REC-xml-names11-20060816, August 2006, <<http://www.w3.org/TR/2006/REC-xml-names11-20060816>>.

## **10.2. Informative References**

- [RFC4079] Peterson, J., "A Presence Architecture for the Distribution of GEOPRIV Location Objects", [RFC 4079](#), July 2005.
- [RFC5012] Schulzrinne, H. and R. Marshall, "Requirements for Emergency Context Resolution with Internet Technologies", [RFC 5012](#), January 2008.
- [RFC5774] Wolf, K. and A. Mayrhofer, "Considerations for Civic Addresses in the Presence Information Data Format Location Object (PIDF-LO): Guidelines and IANA Registry Definition", [BCP 154](#), [RFC 5774](#), March 2010.
- [RFC5985] Barnes, M., "HTTP-Enabled Location Delivery (HELD)", [RFC 5985](#), September 2010.

## Authors' Addresses

James Winterbottom  
CommScope  
Suit 1, Level 2  
iC Enterprise 1, Innovation Campus  
Squires Way  
North Wollongong, NSW 2500  
AU

Phone: +61 242 212938  
Email: [james.winterbottom@commscope.com](mailto:james.winterbottom@commscope.com)



Martin Thomson  
Skype  
3210 Porter Drive  
Palo Alto, California 94304  
US

Email: martin.thomson@gmail.com

Richard Barnes  
BBN Technologies  
9861 Broken Land Parkway  
Columbia, MD 21046  
US

Phone: +1 410 290 6169  
Email: rbarnes@bbn.com

Brian Rosen  
NeuStar, Inc.  
470 Conrad Dr  
Mars, PA 16046  
US

Email: br@brianrosen.net

Robins George  
Huawei Technologies  
Huawei Base, Bantian, Longgan District  
Shenzhen, Guangdong 518129  
P. R. China

Phone: +86 755 2878 8314  
Email: robinsgv@gmail.com

