

Network Working Group P.  
Jokela  
Internet-Draft Ericsson Research  
NomadicLab  
Expires: April 4, 2007 R.  
Moskowitz  
ICSA Labs, a Division of  
TruSecure  
Corporation  
Nikander P.  
Ericsson Research  
NomadicLab  
2006 Oct

**Using ESP transport format with HIP  
draft-ietf-hip-esp-04**

Status of this Memo

By submitting this Internet-Draft, each author represents that any applicable patent or other IPR claims of which he or she is aware have been or will be disclosed, and any of which he or she becomes aware will be disclosed, in accordance with [Section 6 of BCP 79](#).

Internet-Drafts are working documents of the Internet Engineering Task Force (IETF), its areas, and its working groups. Note that other groups may also distribute working documents as Internet-Drafts.

Internet-Drafts are draft documents valid for a maximum of six months and may be updated, replaced, or obsoleted by other documents at any time. It is inappropriate to use Internet-Drafts as reference material or to cite them other than as "work in progress."

The list of current Internet-Drafts can be accessed at <http://www.ietf.org/ietf/1id-abstracts.txt>.

The list of Internet-Draft Shadow Directories can be accessed at <http://www.ietf.org/shadow.html>.

This Internet-Draft will expire on April 4, 2007.

Copyright Notice

Copyright (C) The Internet Society (2006).

Abstract

This memo specifies an Encapsulated Security Payload (ESP) based mechanism for transmission of user data packets, to be used with the Host Identity Protocol (HIP).



Table of Contents

|           |               |  |  |
|-----------|---------------|--|--|
| <u>1</u>  | <u>1.</u>     | Introduction . . . . .                                       |  |
| <u>4</u>  |               |  |  |
| <u>5</u>  | <u>2.</u>     | Conventions used in this document . . . . .                  |  |
| <u>6</u>  |               |  |  |
| <u>6</u>  | <u>3.</u>     | Using ESP with HIP . . . . .                                 |  |
| <u>6</u>  |               |  |  |
| <u>6</u>  | <u>3.1.</u>   | ESP Packet Format . . . . .                                  |  |
| <u>6</u>  |               |  |  |
| <u>6</u>  | <u>3.2.</u>   | Conceptual ESP Packet Processing . . . . .                   |  |
| <u>7</u>  |               |  |  |
| <u>7</u>  | <u>3.2.1.</u> | Semantics of the Security Parameter Index (SPI) . . . . .    |  |
| <u>7</u>  |               |  |  |
| <u>7</u>  | <u>3.3.</u>   | Security Association Establishment and Maintenance . . . . . |  |
| <u>8</u>  |               |  |  |
| <u>8</u>  | <u>3.3.1.</u> | ESP Security Associations . . . . .                          |  |
| <u>8</u>  |               |  |  |
| <u>8</u>  | <u>3.3.2.</u> | Rekeying . . . . .   |  |
| <u>9</u>  |               |  |  |
| <u>9</u>  | <u>3.3.3.</u> | Security Association Management . . . . .                    |  |
| <u>9</u>  |               |  |  |
| <u>9</u>  | <u>3.3.4.</u> | Security Parameter Index (SPI) . . . . .                     |  |
| <u>9</u>  |               |  |  |
| <u>9</u>  | <u>3.3.5.</u> | Supported Transforms . . . . .                               |  |
| <u>10</u> |               |  |  |
| <u>10</u> | <u>3.3.6.</u> | Sequence Number . . . . .                                    |  |
| <u>10</u> |               |  |  |
| <u>10</u> | <u>3.3.7.</u> | Lifetimes and Timers . . . . .                               |  |
| <u>10</u> |               |  |  |
| <u>10</u> | <u>3.4.</u>   | IPsec and HIP ESP Implementation Considerations . . . . .    |  |
| <u>10</u> |               |  |  |
| <u>12</u> | <u>4.</u>     | The Protocol . . . . .                                       |  |
| <u>12</u> |               |  |  |
| <u>12</u> | <u>4.1.</u>   | ESP in HIP . . . . .   |  |
| <u>12</u> |               |  |  |
| <u>12</u> | <u>4.1.1.</u> | Setting up an ESP Security Association . . . . .             |  |
| <u>13</u> |               |  |  |
| <u>13</u> | <u>4.1.2.</u> | Updating an Existing ESP SA . . . . .                        |  |
| <u>14</u> |               |  |  |
| <u>14</u> | <u>5.</u>     | Parameter and Packet Formats . . . . .                       |  |
| <u>14</u> |               |  |  |
| <u>14</u> | <u>5.1.</u>   | New Parameters . . . . .                                     |  |
| <u>14</u> |               |  |  |
| <u>14</u> | <u>5.1.1.</u> | ESP_INFO . . . . .   |  |
| <u>15</u> |               |  |  |
| <u>15</u> | <u>5.1.2.</u> | ESP_TRANSFORM . . . . .                                      |  |
| <u>16</u> |               |  |  |
| <u>16</u> | <u>5.1.3.</u> | NOTIFY Parameter . . . . .                                   |  |
| <u>17</u> |               |  |  |
| <u>17</u> | <u>5.2.</u>   | HIP ESP Security Association Setup . . . . .                 |  |

|                    |  |
|--------------------|--|
| <a href="#">17</a> | <a href="#">5.2.1.</a> Setup During Base Exchange . . . . .                                |
| <a href="#">18</a> | <a href="#">5.3.</a> HIP ESP Rekeying . . . . .  |
| <a href="#">19</a> | <a href="#">5.3.1.</a> Initializing Rekeying . . . . .                                     |
| <a href="#">19</a> | <a href="#">5.3.2.</a> Responding to the Rekeying Initialization . . . . .                 |
| <a href="#">20</a> | <a href="#">5.4.</a> ICMP Messages . . . . .   |
| <a href="#">20</a> | <a href="#">5.4.1.</a> Unknown SPI . . . . .   |
| <a href="#">21</a> | <a href="#">6.</a> Packet Processing . . . . .   |
| <a href="#">21</a> | <a href="#">6.1.</a> Processing Outgoing Application Data . . . . .                        |
| <a href="#">21</a> | <a href="#">6.2.</a> Processing Incoming Application Data . . . . .                        |
| <a href="#">22</a> | <a href="#">6.3.</a> HMAC and SIGNATURE Calculation and Verification . . . . .             |
| <a href="#">22</a> | <a href="#">6.4.</a> Processing Incoming ESP SA Initialization (R1) . . . . .              |
| <a href="#">23</a> | <a href="#">6.5.</a> Processing Incoming Initialization Reply (I2) . . . . .               |
| <a href="#">23</a> | <a href="#">6.6.</a> Processing Incoming ESP SA Setup Finalization (R2) . . . . .          |
| <a href="#">23</a> | <a href="#">6.7.</a> Dropping HIP Associations . . . . .                                   |
| <a href="#">23</a> | <a href="#">6.8.</a> Initiating ESP SA Rekeying . . . . .                                  |
| <a href="#">25</a> | <a href="#">6.9.</a> Processing Incoming UPDATE Packets . . . . .                          |
| <a href="#">25</a> | <a href="#">6.9.1.</a> Processing UPDATE Packet: No Outstanding Rekeying Request . . . . . |
| <a href="#">26</a> | <a href="#">6.10.</a> Finalizing Rekeying . . . . .  |
| <a href="#">27</a> | <a href="#">6.11.</a> Processing NOTIFY Packets . . . . .                                  |
| <a href="#">28</a> | <a href="#">7.</a> Keying Material . . . . .   |

|                             |  |  |
|-----------------------------|--|--|
| <a href="#">8.</a>          | Security Considerations . . . . .                        |  |
| <a href="#">29</a>          |  |  |
| <a href="#">9.</a>          | IANA Considerations . . . . .                            |  |
| <a href="#">30</a>          |  |  |
| <a href="#">10.</a>         | Acknowledgments . . . . .                                |  |
| <a href="#">31</a>          |  |  |
| <a href="#">11.</a>         | References . . . . .                                     |  |
| <a href="#">32</a>          |  |  |
| <a href="#">11.1.</a>       | Normative references . . . . .                           |  |
| <a href="#">32</a>          |  |  |
| <a href="#">11.2.</a>       | Informative references . . . . .                         |  |
| <a href="#">32</a>          |  |  |
| <a href="#">Appendix A.</a> | A Note on Implementation Options . . . . .               |  |
| <a href="#">33</a>          |  |  |
|                             | Authors' Addresses . . . . .                             |  |
| <a href="#">34</a>          |  |  |
|                             | Intellectual Property and Copyright Statements . . . . . |  |
| <a href="#">35</a>          |  |  |



## 1. Introduction

In the Host Identity Protocol Architecture [7], hosts are identified with public keys. The Host Identity Protocol [5] base exchange allows any two HIP-supporting hosts to authenticate each other and to create a HIP association between themselves. During the base exchange, the hosts generate a piece of shared keying material using an authenticated Diffie-Hellman exchange.

The HIP base exchange specification [5] does not describe any transport formats, or methods for user data, to be used during the actual communication; it only defines that it is mandatory to implement the Encapsulated Security Payload (ESP) [4] based transport format and method. This document specifies how ESP is used with HIP to carry actual user data.

To be more specific, this document specifies a set of HIP protocol extensions and their handling. Using these extensions, a pair of ESP Security Associations (SAs) is created between the hosts during the base exchange. The resulting ESP Security Associations use keys drawn from the keying material (KEYMAT) generated during the base exchange. After the HIP association and required ESP SAs have been established between the hosts, the user data communication is protected using ESP. In addition, this document specifies methods to update an existing ESP Security Association.

It should be noted that representations of host identity are not carried explicitly in the headers of user data packets. Instead, the ESP Security Parameter Index (SPI) is used to indicate the right host context. The SPIs are selected during the HIP ESP setup exchange. For user data packets, ESP SPIs (in possible combination with IP addresses) are used indirectly to identify the host context, thereby avoiding any additional explicit protocol headers.





## **2. Conventions used in this document**

The key words "MUST", "MUST NOT", "REQUIRED", "SHALL", "SHALL NOT", "SHOULD", "SHOULD NOT", "RECOMMENDED", "MAY", and "OPTIONAL" in this document are to be interpreted as described in [RFC2119](#) [1].



### **3. Using ESP with HIP**

The HIP base exchange is used to set up a HIP association between two hosts. The base exchange provides two-way host authentication and key material generation, but it does not provide any means for protecting data communication between the hosts. In this document we specify the use of ESP for protecting user data traffic after the HIP base exchange. Note that this use of ESP is intended only for host-to-host traffic; security gateways are not supported.

To support ESP use, the HIP base exchange messages require some minor additions to the parameters transported. In the R1 packet, the responder adds the possible ESP transforms in a new ESP\_TRANSFORM parameter before sending it to the Initiator. The Initiator gets the proposed transforms, selects one of those proposed transforms, and adds it to the I2 packet in an ESP\_TRANSFORM parameter. In this I2 packet, the Initiator also sends the SPI value that it wants to be used for ESP traffic flowing from the Responder to the Initiator. This information is carried using the new ESP\_INFO parameter. When finalizing the ESP SA setup, the Responder sends its SPI value to the Initiator in the R2 packet, again using ESP\_INFO.

#### **3.1. ESP Packet Format**

The ESP specification [4] defines the ESP packet format for IPsec. The HIP ESP packet looks exactly the same as the IPsec ESP transport format packet. The semantics, however, are a bit different and are described in more detail in the next subsection.

#### **3.2. Conceptual ESP Packet Processing**

ESP packet processing can be implemented in different ways in HIP. It is possible to implement it in a way that a standards compliant, unmodified IPsec implementation [4] can be used.

When a standards compliant IPsec implementation that uses IP addresses in the SPD and SAD is used, the packet processing may take the following steps. For outgoing packets, assuming that the upper layer pseudoheader has been built using IP addresses, the implementation recalculates upper layer checksums using HITs and, after that, changes the packet source and destination addresses back to corresponding IP addresses. The packet is sent to the IPsec ESP for transport mode handling and from there the encrypted packet is sent to the network. When an ESP packet is received, the packet is first put to the IPsec ESP transport mode handling, and after decryption, the source and destination IP addresses are replaced

with

HITs and finally, upper layer checksums are verified before passing the packet to the upper layer.

Jokela, et al.  
6]

Expires April 4, 2007

[Page

An alternative way to implement the packet processing is the BEET (Bound End-to-End Tunnel) [11] mode. In BEET mode, the ESP packet is formatted as a transport mode packet, but the semantics of the connection are the same as for tunnel mode. The "outer" addresses of the packet are the IP addresses and the "inner" addresses are the HITs. For outgoing traffic, after the packet has been encrypted, the packet's IP header is changed to a new one, containing IP addresses instead of HITs and the packet is sent to the network. When ESP packet is received, the SPI value, together with the integrity protection, allow the packet to be securely associated with the right HIT pair. The packet header is replaced with a new header, containing HITs and the packet is decrypted.

### **3.2.1. Semantics of the Security Parameter Index (SPI)**

SPIs are used in ESP to find the right Security Association for received packets. The ESP SPIs have added significance when used with HIP; they are a compressed representation of a pair of HITs. Thus, SPIs MAY be used by intermediary systems in providing services like address mapping. Note that since the SPI has significance at the receiver, only the < DST, SPI >, where DST is a destination IP address, uniquely identifies the receiver HIT at any given point of time. The same SPI value may be used by several hosts. A single < DST, SPI > value may denote different hosts and contexts at different points of time, depending on the host that is currently reachable at the DST.

Each host selects for itself the SPI it wants to see in packets received from its peer. This allows it to select different SPIs for different peers. The SPI selection SHOULD be random; the rules of [Section 2.1](#) of the ESP specification [4] must be followed. A different SPI SHOULD be used for each HIP exchange with a particular host; this is to avoid a replay attack. Additionally, when a host rekeys, the SPI MUST be changed. Furthermore, if a host changes over to use a different IP address, it MAY change the SPI.

One method for SPI creation that meets the above criteria would be to concatenate the HIT with a 32-bit random or sequential number, hash this (using SHA1), and then use the high order 32 bits as the SPI.

The selected SPI is communicated to the peer in the third (I2) and fourth (R2) packets of the base HIP exchange. Changes in SPI are signaled with ESP\_INFO parameters.

### **3.3. Security Association Establishment and Maintenance**



### **3.3.1. ESP Security Associations**

In HIP, ESP Security Associations are setup between the HIP nodes during the base exchange [5]. Existing ESP SAs can be updated later using UPDATE messages. The reason for updating the ESP SA later can be e.g. need for rekeying the SA because of sequence number rollover.

Upon setting up a HIP association, each association is linked to two ESP SAs, one for incoming packets and one for outgoing packets. The Initiator's incoming SA corresponds with the Responder's outgoing one, and vice versa. The Initiator defines the SPI for its incoming association, as defined in [Section 3.2.1](#). This SA is herein called SA-RI, and the corresponding SPI is called SPI-RI. Respectively, the

Responder's incoming SA corresponds with the Initiator's outgoing SA and is called SA-IR, with the SPI being called SPI-IR.

The Initiator creates SA-RI as a part of R1 processing, before sending out the I2, as explained in [Section 6.4](#). The keys are derived from KEYMAT, as defined in [Section 7](#). The Responder creates SA-RI as a part of I2 processing, see [Section 6.5](#).

The Responder creates SA-IR as a part of I2 processing, before sending out R2; see [Section 6.5](#). The Initiator creates SA-IR when processing R2; see [Section 6.6](#).

The initial session keys are drawn from the generated keying material, KEYMAT, after the HIP keys have been drawn as specified in [5].

When the HIP association is removed, the related ESP SAs MUST also be removed.

### **3.3.2. Rekeying**

After the initial HIP base exchange and SA establishment, both hosts are in the ESTABLISHED state. There are no longer Initiator and Responder roles and the association is symmetric. In this subsection, the party that initiates the rekey procedure is denoted with I' and the peer with R'.

An existing HIP-created ESP SA may need updating during the lifetime of the HIP association. This document specifies the rekeying of an existing HIP-created ESP SA, using the UPDATE message. The ESP\_INFO parameter introduced above is used for this purpose.

I' initiates the ESP SA updating process when needed (see [Section 6.8](#)). It creates an UPDATE packet with required information and sends it to the peer node. The old SAs are still in use, local





policy permitting.

R', after receiving and processing the UPDATE (see [Section 6.9](#)), generates new SAs: SA-I'R' and SA-R'I'. It does not take the new outgoing SA into use, but still uses the old one, so there temporarily exists two SA pairs towards the same peer host. The SPI for the new outgoing SA, SPI-R'I', is specified in the received ESP\_INFO parameter in the UPDATE packet. For the new incoming SA,

R'

generates the new SPI value, SPI-I'R', and includes it in the response UPDATE packet.

When I' receives a response UPDATE from R', it generates new SAs, as described in [Section 6.9](#): SA-I'R' and SA-R'I'. It starts using the new outgoing SA immediately.

R' starts using the new outgoing SA when it receives traffic on the new incoming SA or when it receives the UPDATE ACK confirming completion of rekeying. After this, R' can remove the old SAs. Similarly, when the I' receives traffic from the new incoming SA, it can safely remove the old SAs.

### **3.3.3. Security Association Management**

An SA pair is indexed by the 2 SPIs and 2 HITs (both local and remote

HITs since a system can have more than one HIT). An inactivity timer

is RECOMMENDED for all SAs. If the state dictates the deletion of an

SA, a timer is set to allow for any late arriving packets.

### **3.3.4. Security Parameter Index (SPI)**

The SPIs in ESP provide a simple compression of the HIP data from all

packets after the HIP exchange. This does require a per HIT-pair Security Association (and SPI), and a decrease of policy granularity over other Key Management Protocols like IKE.

When a host updates the ESP SA, it provides a new inbound SPI to and gets a new outbound SPI from its partner.

### **3.3.5. Supported Transforms**

All HIP implementations MUST support AES [3] and HMAC-SHA-1-96 [2]. If the Initiator does not support any of the transforms offered by the Responder, it should abandon the negotiation and inform the peer with a NOTIFY message about a non-supported transform.

In addition to AES, all implementations MUST implement the ESP NULL encryption algorithm. When the ESP NULL encryption is used, it MUST

be used together with SHA1 or MD5 authentication as specified in

Jokela, et al.  
9]

Expires April 4, 2007

[Page

## [Section 5.1.2](#)

### **[3.3.6.](#) Sequence Number**

The Sequence Number field is MANDATORY when ESP is used with HIP. Anti-replay protection MUST be used in an ESP SA established with HIP. When ESP is used with HIP, a 64-bit sequence number MUST be used. This means that each host MUST rekey before its sequence number reaches  $2^{64}$ .

When using a 64-bit sequence number, the higher 32 bits are NOT included in the ESP header, but are simply kept local to both peers. See [\[9\]](#).

### **[3.3.7.](#) Lifetimes and Timers**

HIP does not negotiate any lifetimes. All ESP lifetimes are local policy. The only lifetimes a HIP implementation MUST support are sequence number rollover (for replay protection), and SHOULD support timing out inactive ESP SAs. An SA times out if no packets are received using that SA. The default timeout value is 15 minutes. Implementations MAY support lifetimes for the various ESP transforms.

Each implementation SHOULD implement per-HIT configuration of the inactivity timeout, allowing statically configured HIP associations to stay alive for days, even when inactive.

## **[3.4.](#) IPsec and HIP ESP Implementation Considerations**

When HIP is run on a node where a standards compliant IPsec is used, some issues have to be considered.

The HIP implementation must be able to co-exist with other IPsec keying protocols. When the HIP implementation selects the SPI value, it may lead to a collision if not implemented properly. To avoid the possibility for a collision, the HIP implementation MUST ensure that the SPI values used for HIP SAs are not used for IPsec or other SAs, and vice versa.

For outbound traffic the SPD or (coordinated) SPDs if there are two (one for HIP and one for IPsec) MUST ensure that packets intended for

HIP processing are given a HIP-enabled SA and packets intended for IPsec processing are given an IPsec-enabled SA. The SP then MUST be bound to the matching SA and non-HIP packets will not be processed by

this SA. Data originating from a socket that is not using HIP, MUST NOT have checksum recalculated as described in [Section 3.2](#) paragraph 2 and data MUST NOT be passed to the SP or SA created by the HIP.

Incoming data packets using a SA that is not negotiated by HIP, MUST

Jokela, et al.  
10]

Expires April 4, 2007

[Page

NOT be processed as described in [Section 3.2](#) paragraph 2. The SPI will identify the correct SA for packet decryption and MUST be used to identify that the packet has an upper-layer checksum that is calculated as specified in [\[5\]](#).



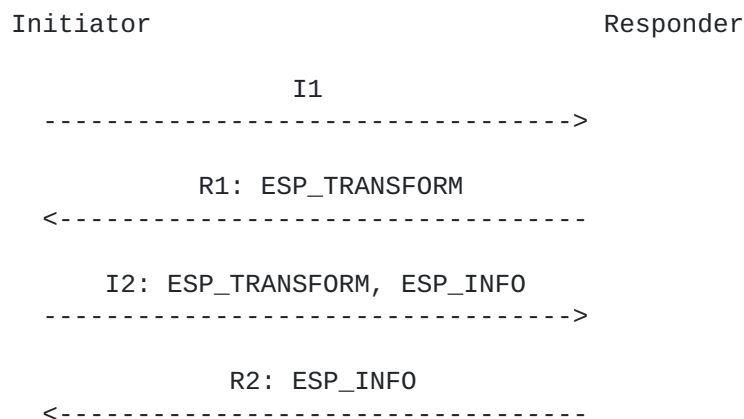
## 4. The Protocol

In this section, the protocol for setting up an ESP association to be used with HIP association is described.

### 4.1. ESP in HIP

#### 4.1.1. Setting up an ESP Security Association

Setting up an ESP Security Association between hosts using HIP consists of three messages passed between the hosts. The parameters are included in R1, I2, and R2 messages during base exchange.



Setting up an ESP Security Association between HIP hosts requires three messages to exchange the information that is required during an ESP communication.

The R1 message contains the ESP\_TRANSFORM parameter, in which the sending host defines the possible ESP transforms it is willing to use for the ESP SA.

The I2 message contains the response to an ESP\_TRANSFORM received in the R1 message. The sender must select one of the proposed ESP transforms from the ESP\_TRANSFORM parameter in the R1 message and include the selected one in the ESP\_TRANSFORM parameter in the I2 packet. In addition to the transform, the host includes the ESP\_INFO parameter, containing the SPI value to be used by the peer host.

In the R2 message, the ESP SA setup is finalized. The packet contains the SPI information required by the Initiator for the ESP SA.

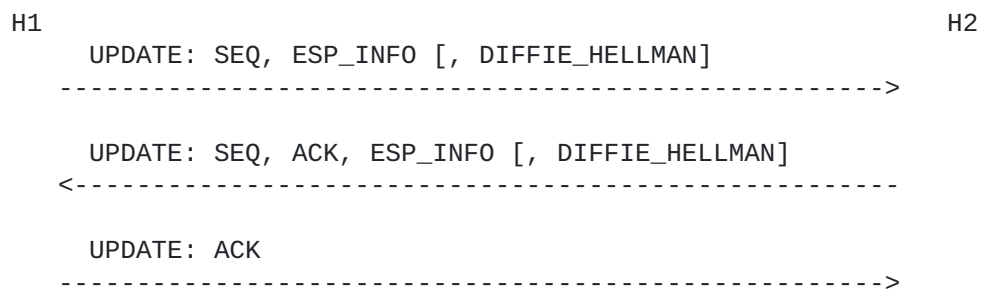




#### 4.1.2. Updating an Existing ESP SA

The update process is accomplished using two messages. The HIP UPDATE message is used to update the parameters of an existing ESP SA. The UPDATE mechanism and message is defined in [5] and the additional parameters for updating an existing ESP SA are described here.

The following picture shows a typical exchange when an existing ESP SA is updated. Messages include SEQ and ACK parameters required by the UPDATE mechanism.



The host willing to update the ESP SA creates and sends an UPDATE message. The message contains the ESP\_INFO parameter, containing the old SPI value that was used, the new SPI value to be used, and the index value for the keying material, giving the point from where the next keys will be drawn. If new keying material must be generated, the UPDATE message will also contain the DIFFIE\_HELLMAN parameter, defined in [5].

The host receiving the UPDATE message requesting update of an existing ESP SA, MUST reply with an UPDATE message. In the reply message, the host sends the ESP\_INFO parameter containing the corresponding values: old SPI, new SPI, and the keying material index. If the incoming UPDATE contained a DIFFIE\_HELLMAN parameter, the reply packet MUST also contain a DIFFIE\_HELLMAN parameter.



## **5. Parameter and Packet Formats**

In this section, new and modified HIP parameters are presented, as well as modified HIP packets.

### **5.1. New Parameters**

Two new HIP parameters are defined for setting up ESP transport format associations in HIP communication and for rekeying existing ones. Also, the NOTIFY parameter, described in [5], has two new error parameters.

| Parameter     | Type | Length   | Data  |
|---------------|------|----------|---|
| ESP_INFO      | 65   | 12       | Remote's old SPI,<br>new SPI and other info       |
| ESP_TRANSFORM | 4095 | variable | ESP Encryption and<br>Authentication Transform(s) |

#### **5.1.1. ESP\_INFO**

During the establishment and update of an ESP SA, the SPI value of both hosts must be transmitted between the hosts. Additional information that is required when the hosts are drawing keys from the generated keying material is the index value into the KEYMAT from where the keys are drawn. The ESP\_INFO parameter is used to transmit this information between the hosts.

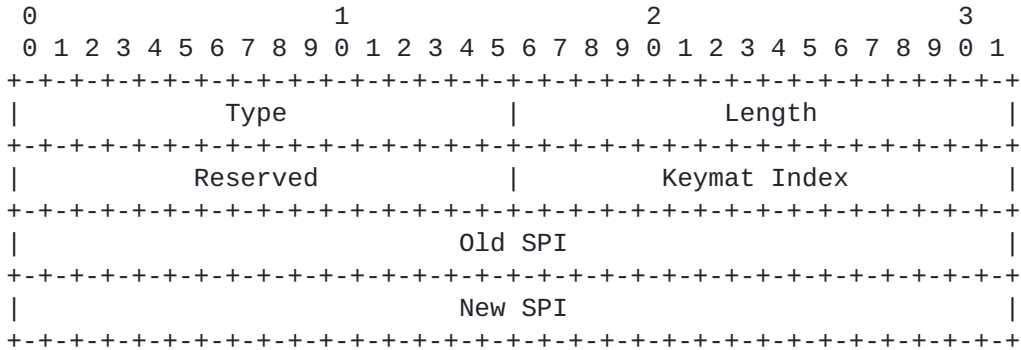
During the initial ESP SA setup, the hosts send the SPI value that they want the peer to use when sending ESP data to them. The value is set in the New SPI field of the ESP\_INFO parameter. In the initial setup, an old value for the SPI does not exist, thus the Old SPI value field is set to zero. The Old SPI field value may also be zero when additional SAs are set up between HIP hosts, e.g. in case of multihomed HIP hosts [12]. However, such use is beyond the scope of this specification.

The Keymat index value points to the place in the KEYMAT from where the keying material for the ESP SAs is drawn. The Keymat index value is zero only when the ESP\_INFO is sent during a rekeying process and new keying material is generated.

During the life of an SA established by HIP, one of the hosts may need to reset the Sequence Number to one and rekey. The reason for rekeying might be an approaching sequence number wrap in ESP, or a local policy on use of a key. Rekeying ends the current SAs and starts new ones on both peers.



During the rekeying process, the ESP\_INFO parameter is used to transmit the changed SPI values and the keying material index.



Type                    65  
Length                    12  
Keymat Index            Index, in bytes, where to continue to draw ESP

keys

from KEYMAT. If the packet includes a new Diffie-Hellman key and the ESP\_INFO is sent in an UPDATE packet, the field MUST be zero. If the ESP\_INFO is included in base exchange messages,

the

Keymat Index must have the index value of the

point

from where the ESP SA keys are drawn. Note that

the

length of this field limits the amount of keying material that can be drawn from KEYMAT. If that amount is exceeded, the packet MUST contain a new Diffie-Hellman key.

Old SPI                Old SPI for data sent to address(es) associated with this SA. If this is an initial SA setup, the Old SPI value is zero.

New SPI                New SPI for data sent to address(es) associated with this SA.

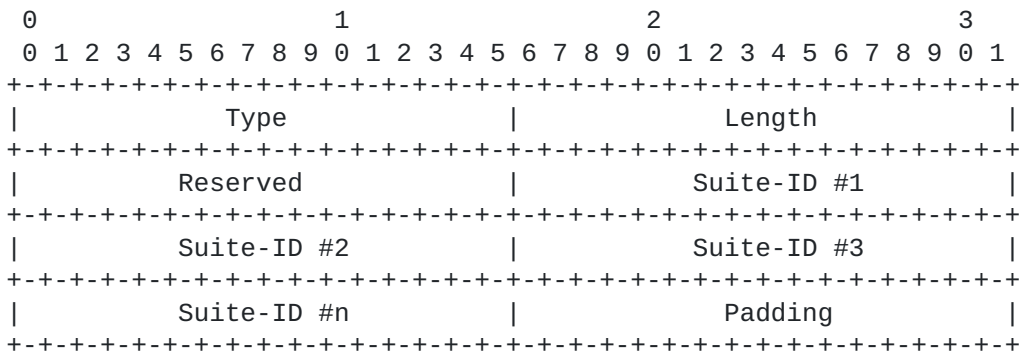
### 5.1.2. ESP\_TRANSFORM

The ESP\_TRANSFORM parameter is used during ESP SA establishment.

The

first party sends a selection of transform families in the ESP\_TRANSFORM parameter and the peer must select one of the proposed values and include it in the response ESP\_TRANSFORM parameter.





Type                    4095  
 Length                 length in octets, excluding Type, Length, and padding  
 Reserved                zero when sent, ignored when received  
 Suite-ID                defines the ESP Suite to be used

The following Suite-IDs are defined ([6],[8]):

| Suite-ID                        | Value |
|---------------------------------|-------|
| RESERVED                        | 0     |
| ESP-AES-CBC with HMAC-SHA1      | 1     |
| ESP-3DES-CBC with HMAC-SHA1     | 2     |
| ESP-3DES-CBC with HMAC-MD5      | 3     |
| ESP-BLOWFISH-CBC with HMAC-SHA1 | 4     |
| ESP-NULL with HMAC-SHA1         | 5     |
| ESP-NULL with HMAC-MD5          | 6     |

The sender of an ESP transform parameter MUST make sure that there are no more than six (6) Suite-IDs in one ESP transform parameter. Conversely, a recipient MUST be prepared to handle received transport parameters that contain more than six Suite-IDs. The limited number of Suite-IDs sets the maximum size of ESP\_TRANSFORM parameter. As the default configuration, the ESP\_TRANSFORM parameter MUST contain at least one of the mandatory Suite-IDs. There MAY be a configuration option that allows the administrator to override this default.

Mandatory implementations: ESP-AES-CBC with HMAC-SHA1 and ESP-NULL with HMAC-SHA1.

### 5.1.3. NOTIFY Parameter

The HIP base specification defines a set of NOTIFY error types. The following error types are required for describing errors in ESP Transform crypto suites during negotiation.





|                                |       |
|--------------------------------|-------|
| NOTIFY PARAMETER - ERROR TYPES | Value |
| -----                          | ----- |

|                        |    |
|------------------------|----|
| NO_ESP_PROPOSAL_CHOSEN | 18 |
|------------------------|----|

None of the proposed ESP Transform crypto suites was acceptable.

|                              |    |
|------------------------------|----|
| INVALID_ESP_TRANSFORM_CHOSEN | 19 |
|------------------------------|----|

The ESP Transform crypto suite does not correspond to one offered by the responder.

## **5.2. HIP ESP Security Association Setup**

The ESP Security Association is set up during the base exchange. The

following subsections define the ESP SA setup procedure both using base exchange messages (R1, I2, R2) and using UPDATE messages.

### **5.2.1. Setup During Base Exchange**

#### **5.2.1.1. Modifications in R1**

The ESP\_TRANSFORM contains the ESP modes supported by the sender, in the order of preference. All implementations MUST support AES [3] with HMAC-SHA-1-96 [2].

The following figure shows the resulting R1 packet layout.

The HIP parameters for the R1 packet:

```
IP ( HIP ( [ R1_COUNTER, ]
          PUZZLE,
          DIFFIE_HELLMAN,
          HIP_TRANSFORM,
          ESP_TRANSFORM,
          HOST_ID,
          [ ECHO_REQUEST, ]
          HIP_SIGNATURE_2 )
      [, ECHO_REQUEST ])
```

#### **5.2.1.2. Modifications in I2**

The ESP\_INFO contains the sender's SPI for this association as well as the keymat index from where the ESP SA keys will be drawn. The Old SPI value is set to zero.



The ESP\_TRANSFORM contains the ESP mode selected by the sender of R1.

All implementations MUST support AES [3] with HMAC-SHA-1-96 [2].

The following figure shows the resulting I2 packet layout.

The HIP parameters for the I2 packet:

```
IP ( HIP ( ESP_INFO,  
          [R1_COUNTER,]  
          SOLUTION,  
          DIFFIE_HELLMAN,  
          HIP_TRANSFORM,  
          ESP_TRANSFORM,  
          ENCRYPTED { HOST_ID },  
          [ ECHO_RESPONSE ,]  
          HMAC,  
          HIP_SIGNATURE  
          [, ECHO_RESPONSE] ) )
```

### **5.2.1.3. Modifications in R2**

The R2 contains an ESP\_INFO parameter, which has the SPI value of the sender of the R2 for this association. The ESP\_INFO also has the keymat index value specifying where the ESP SA keys are drawn.

The following figure shows the resulting R2 packet layout.

The HIP parameters for the R2 packet:

```
IP ( HIP ( ESP_INFO, HMAC_2, HIP_SIGNATURE ) )
```

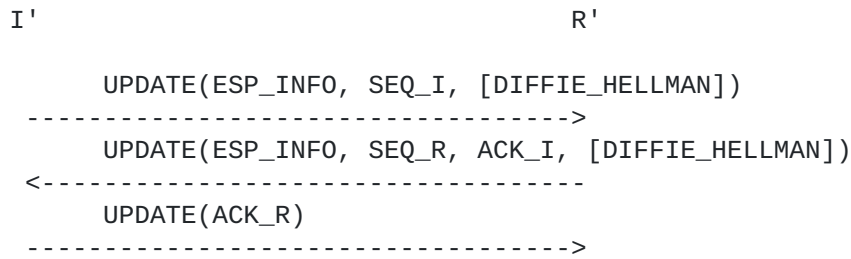
### **5.3. HIP ESP Rekeying**

In this section, the procedure for rekeying an existing ESP SA is presented.

Conceptually, the process can be represented by the following message

sequence using the host names I' and R' defined in [Section 3.3.2](#). For simplicity, HMAC and HIP\_SIGNATURE are not depicted, and DIFFIE\_HELLMAN keys are optional. The UPDATE with ACK\_I need not be piggybacked with the UPDATE with SEQ\_R; it may be acked separately (in which case the sequence would include four packets).





Below, the first two packets in this figure are explained.

### 5.3.1. Initializing Rekeying

When HIP is used with ESP, the UPDATE packet is used to initiate rekeying. The UPDATE packet MUST carry an ESP\_INFO and MAY carry a DIFFIE\_HELLMAN parameter.

Intermediate systems that use the SPI will have to inspect HIP packets for those that carry rekeying information. The packet is signed for the benefit of the intermediate systems. Since intermediate systems may need the new SPI values, the contents cannot be encrypted.

The following figure shows the contents of a rekeying initialization UPDATE packet.

The HIP parameters for the UPDATE packet initiating rekeying:

```

IP ( HIP ( ESP_INFO,
           SEQ,
           [DIFFIE_HELLMAN, ]
           HMAC,
           HIP_SIGNATURE ) )

```

### 5.3.2. Responding to the Rekeying Initialization

The UPDATE ACK is used to acknowledge the received UPDATE rekeying initialization. The acknowledgement UPDATE packet MUST carry an ESP\_INFO and MAY carry a DIFFIE\_HELLMAN parameter.

Intermediate systems that use the SPI will have to inspect HIP packets for packets carrying rekeying information. The packet is signed for the benefit of the intermediate systems. Since intermediate systems may need the new SPI values, the contents cannot be encrypted.

The following figure shows the contents of a rekeying acknowledgement UPDATE packet.



The HIP parameters for the UPDATE packet:

```
IP ( HIP ( ESP_INFO,  
          SEQ,  
          ACK,  
          [ DIFFIE_HELLMAN, ]  
          HMAC,  
          HIP_SIGNATURE ) )
```

#### **5.4. ICMP Messages**

The ICMP message handling is mainly described in the HIP base specification [5]. In this section, we describe the actions related to ESP security associations.

##### **5.4.1. Unknown SPI**

If a HIP implementation receives an ESP packet that has an unrecognized SPI number, it MAY respond (subject to rate limiting the responses) with an ICMP packet with type "Parameter Problem", with the Pointer pointing to the the beginning of SPI field in the ESP header.





## **6. Packet Processing**

Packet processing is mainly defined in the HIP base specification [5]. This section describes the changes and new requirements for packet handling when the ESP transport format is used. Note that all HIP packets (currently protocol 99) MUST bypass ESP processing.

### **6.1. Processing Outgoing Application Data**

Outgoing application data handling is specified in the HIP base specification [5]. When ESP transport format is used, and there is an active HIP session for the given < source, destination > HIT pair, the outgoing datagram is protected using the ESP security association. In a typical implementation, this will result in a BEET-mode ESP packet being sent. BEET-mode [11] was introduced above in [Section 3.2](#).

1. Detect the proper ESP SA using the HITs in the packet header or other information associated with the packet
2. Process the packet normally, as if the SA was a transport mode SA.
3. Ensure that the outgoing ESP protected packet has proper IP header format depending on the used IP address family, and proper IP addresses in its IP header, e.g., by replacing HITs left by the ESP processing. Note that this placement of proper IP addresses MAY also be performed at some other point in the stack, e.g., before ESP processing.

### **6.2. Processing Incoming Application Data**

Incoming HIP user data packets arrive as ESP protected packets. In the usual case the receiving host has a corresponding ESP security association, identified by the SPI and destination IP address in the packet. However, if the host has crashed or otherwise lost its HIP state, it may not have such an SA.

The basic incoming data handling is specified in the HIP base specification. Additional steps are required when ESP is used for protecting the data traffic. The following steps define the conceptual processing rules for incoming ESP protected datagrams targeted to an ESP security association created with HIP.

1. Detect the proper ESP SA using the SPI. If the resulting SA is a non-HIP ESP SA, process the packet according to standard IPsec

MAY rules. If there are no SAs identified with the SPI, the host  
send an ICMP packet as defined in [Section 5.4](#). How to handle

Jokela, et al.  
21]

Expires April 4, 2007

[Page

lost state is an implementation issue.

2. If the SPI matches with an active HIP-based ESP SA, the IP addresses in the datagram are replaced with the HITs associated with the SPI. Note that this IP-address-to-HIT conversion step MAY also be performed at some other point in the stack, e.g., after ESP processing. Note also that if the incoming packet has IPv4 addresses, the packet must be converted to IPv6 format before replacing the addresses with HITs (such that the transport checksum will pass if there are no errors).
3. The transformed packet is next processed normally by ESP, as if the packet were a transport mode packet. The packet may be dropped by ESP, as usual. In a typical implementation, the result of successful ESP decryption and verification is a datagram with the associated HITs as source and destination.
4. The datagram is delivered to the upper layer. Demultiplexing the datagram to the right upper layer socket is performed as usual, except that the HITs are used in place of IP addresses during the demultiplexing.

### **6.3. HMAC and SIGNATURE Calculation and Verification**

The new HIP parameters described in this document, ESP\_INFO and ESP\_TRANSFORM, must be protected using HMAC and signature calculations. In a typical implementation, they are included in R1, I2, R2, and UPDATE packet HMAC and SIGNATURE calculations as described in [5].

### **6.4. Processing Incoming ESP SA Initialization (R1)**

The ESP SA setup is initialized in the R1 message. The receiving host (Initiator) select one of the ESP transforms from the presented values. If no suitable value is found, the negotiation is terminated. The selected values are subsequently used when generating and using encryption keys, and when sending the reply packet. If the proposed alternatives are not acceptable to the system, it may abandon the ESP SA establishment negotiation, or it may resend the I1 message within the retry bounds.

After selecting the ESP transform, and performing other R1 processing, the system prepares and creates an incoming ESP security association. It may also prepare a security association for outgoing traffic, but since it does not have the correct SPI value yet, it cannot activate it.



### **6.5. Processing Incoming Initialization Reply (I2)**

The following steps are required to process the incoming ESP SA initialization replies in I2. The steps below assume that the I2 has

been accepted for processing (e.g., has not been dropped due to HIT comparisons as described in [5]).

- o The ESP\_TRANSFORM parameter is verified and it MUST contain a single value in the parameter and it MUST match one of the values offered in the initialization packet.
- o The ESP\_INFO New SPI field is parsed to obtain the SPI that will be used for the Security Association outbound from the Responder and inbound to the Initiator. For this initial ESP SA establishment, the Old SPI value MUST be zero. The Keymat Index field MUST contain the index value to the KEYMAT from where the ESP SA keys are drawn.
- o The system prepares and creates both incoming and outgoing ESP security associations.
- o Upon successful processing of the initialization reply message, the possible old Security Associations (as left over from an earlier incarnation of the HIP association) are dropped and the new ones are installed, and a finalizing packet, R2, is sent. Possible ongoing rekeying attempts are dropped.

### **6.6. Processing Incoming ESP SA Setup Finalization (R2)**

Before the ESP SA can be finalized, the ESP\_INFO New SPI field is parsed to obtain the SPI that will be used for the ESP Security Association inbound to the sender of the finalization message R2. The system uses this SPI to create or activate the outgoing ESP security association used for sending packets to the peer.

### **6.7. Dropping HIP Associations**

When the system drops a HIP association, as described in the HIP base specification, the associated ESP SAs MUST also be dropped.

### **6.8. Initiating ESP SA Rekeying**

During ESP SA rekeying, the hosts draw new keys from the existing keying material, or a new keying material is generated from where the new keys are drawn.

A system may initiate the SA rekeying procedure at any time. It MUST initiate a rekey if its incoming ESP sequence counter is about to



overflow. The system MUST NOT replace its keying material until the rekeying packet exchange successfully completes.

Optionally, a system may include a new Diffie-Hellman key for use in new KEYMAT generation. New KEYMAT generation occurs prior to drawing the new keys.

The rekeying procedure uses the UPDATE mechanism defined in [5]. Because each peer must update its half of the security association pair (including new SPI creation), the rekeying process requires that

each side both send and receive an UPDATE. A system will then rekey the ESP SA when it has sent parameters to the peer and has received both an ACK of the relevant UPDATE message and corresponding peer's parameters. It may be that the ACK and the required HIP parameters arrive in different UPDATE messages. This is always true if a system

does not initiate ESP SA update but responds to an update request from the peer, but may also occur if two systems initiate update nearly simultaneously. In such a case, if the system has an outstanding update request, it saves the one parameter and waits for the other before completing rekeying.

The following steps define the processing rules for initiating an ESP

SA update:

1. The system decides whether to continue to use the existing KEYMAT or to generate new KEYMAT. In the latter case, the system MUST generate a new Diffie-Hellman public key.
2. The system creates an UPDATE packet, which contains the ESP\_INFO parameter. In addition, the host may include the optional DIFFIE\_HELLMAN parameter. If the UPDATE contains the DIFFIE\_HELLMAN parameter, the Keymat Index in the ESP\_INFO parameter MUST be zero, and the Diffie-Hellman group ID must be unchanged from that used in the initial handshake. If the UPDATE does not contain DIFFIE\_HELLMAN, the ESP\_INFO Keymat Index MUST be greater or equal to the index of the next byte to be drawn from the current KEYMAT.
3. The system sends the UPDATE packet. For reliability, the underlying UPDATE retransmission mechanism MUST be used.
4. The system MUST NOT delete its existing SAs, but continue using them if its policy still allows. The rekeying procedure SHOULD be initiated early enough to make sure that the SA replay counters do not overflow.

5. In case a protocol error occurs and the peer system acknowledges the UPDATE but does not itself send an ESP\_INFO, the system may



not finalize the outstanding ESP SA update request. To guard against this, a system MAY re-initiate the ESP SA update procedure after some time waiting for the peer to respond, or it MAY decide to abort the ESP SA after waiting for an implementation-dependent time. The system MUST NOT keep an outstanding ESP SA update request for an indefinite time.

To simplify the state machine, a host MUST NOT generate new UPDATES while it has an outstanding ESP SA update request, unless it is restarting the update process.

### **6.9. Processing Incoming UPDATE Packets**

When a system receives an UPDATE packet, it must be processed if the following conditions hold (in addition to the generic conditions specified for UPDATE processing in Section 6.12 of [5]):

1. A corresponding HIP association must exist. This is usually ensured by the underlying UPDATE mechanism.
2. The state of the HIP association is ESTABLISHED or R2-SENT.

If the above conditions hold, the following steps define the conceptual processing rules for handling the received UPDATE packet:

1. If the received UPDATE contains a DIFFIE\_HELLMAN parameter, the received Keymat Index MUST be zero and the Group ID must match the Group ID in use on the association. If this test fails, the packet SHOULD be dropped and the system SHOULD log an error message.
2. If there is no outstanding rekeying request, the packet processing continues as specified in [Section 6.9.1](#).
3. If there is an outstanding rekeying request, the UPDATE MUST be acknowledged, the received ESP\_INFO (and possibly DIFFIE\_HELLMAN) parameters must be saved, and the packet processing continues as specified in [Section 6.10](#).

#### **6.9.1. Processing UPDATE Packet: No Outstanding Rekeying Request**

The following steps define the conceptual processing rules for handling a received UPDATE packet with ESP\_INFO parameter:

1. The system consults its policy to see if it needs to generate a new Diffie-Hellman key, and generates a new key (with same Group ID) if needed. The system records any newly generated or received Diffie-Hellman keys, for use in KEYMAT generation upon



finalizing the ESP SA update.

2. If the system generated a new Diffie-Hellman key in the previous step, or if it received a DIFFIE\_HELLMAN parameter, it sets ESP\_INFO Keymat Index to zero. Otherwise, the ESP\_INFO Keymat Index MUST be greater or equal to the index of the next byte to be drawn from the current KEYMAT. In this case, it is RECOMMENDED that the host use the Keymat Index requested by the peer in the received ESP\_INFO.

3. The system creates an UPDATE packet, which contains an ESP\_INFO parameter, and the optional DIFFIE\_HELLMAN parameter. This UPDATE would also typically acknowledge the peer's UPDATE with

an

ACK parameter, although a separate UPDATE ACK may be sent.

4. The system sends the UPDATE packet and stores any received ESP\_INFO, and DIFFIE\_HELLMAN parameters. At this point, it only needs to receive an acknowledgement for the newly sent UPDATE to finish ESP SA update. In the usual case, the acknowledgement is handled by the underlying UPDATE mechanism.

#### **6.10. Finalizing Rekeying**

A system finalizes rekeying when it has both received the corresponding UPDATE acknowledgement packet from the peer and it has successfully received the peer's UPDATE. The following steps are taken:

1. If the received UPDATE messages contains a new Diffie-Hellman key, the system has a new Diffie-Hellman key due to initiating ESP SA update, or both, the system generates new KEYMAT. If there is only one new Diffie-Hellman key, the old existing key

is

used as the other key.

2. If the system generated new KEYMAT in the previous step, it sets Keymat Index to zero, independent of whether the received UPDATE included a Diffie-Hellman key or not. If the system did not generate new KEYMAT, it uses the greater Keymat Index of the two (sent and received) ESP\_INFO parameters.

3. The system draws keys for new incoming and outgoing ESP SAs, starting from the Keymat Index, and prepares new incoming and outgoing ESP SAs. The SPI for the outgoing SA is the new SPI value received in an ESP\_INFO parameter. The SPI for the incoming SA was generated when the ESP\_INFO was sent to the

peer.

The order of the keys retrieved from the KEYMAT during rekeying process is similar to that described in [Section 7](#). Note, that only IPsec ESP keys are retrieved during rekeying process, not



the HIP keys.

4. The system starts to send to the new outgoing SA and prepares to start receiving data on the new incoming SA. Once the system receives data on the new incoming SA it may safely delete the old SAs.

#### **6.11. Processing NOTIFY Packets**

The processing of NOTIFY packets is described in the HIP base specification.



## 7. Keying Material

The keying material is generated as described in the HIP base specification. During the base exchange, the initial keys are drawn from the generated material. After the HIP association keys have been drawn, the ESP keys are drawn in the following order:

SA-g1 ESP encryption key for HOST\_g's outgoing traffic

SA-g1 ESP authentication key for HOST\_g's outgoing traffic

SA-l1 ESP encryption key for HOST\_l's outgoing traffic

SA-l1 ESP authentication key for HOST\_l's outgoing traffic

HOST\_g denotes the host with the greater HIT value, and HOST\_l the host with the lower HIT value. When HIT values are compared, they are interpreted as positive (unsigned) 128-bit integers in network byte order.

The four HIP keys are only drawn from KEYMAT during a HIP I1->R2 exchange. Subsequent rekeys using UPDATE will only draw the four  
ESP

keys from KEYMAT. [Section 6.9](#) describes the rules for reusing or regenerating KEYMAT based on the rekeying.

The number of bits drawn for a given algorithm is the "natural" size of the keys. For the mandatory algorithms, the following sizes apply:

AES 128 bits

SHA-1 160 bits

NULL 0 bits





## **8. Security Considerations**

In this document the usage of ESP [4] between HIP hosts to protect data traffic is introduced. The Security Considerations for ESP are discussed in the ESP specification.

There are different ways to establish an ESP Security Association between two nodes. This can be done, e.g. using IKE [10]. This document specifies how Host Identity Protocol is used to establish ESP Security Associations.

The following issues are new, or changed from the standard ESP usage:

- o Initial keying material generation
- o Updating the keying material

The initial keying material is generated using the Host Identity Protocol [5] using Diffie-Hellman procedure. This document extends the usage of UPDATE packet, defined in the base specification, to modify existing ESP SAs. The hosts may rekey, i.e. force the generation of new keying material using Diffie-Hellman procedure.

The initial setup of ESP SA between the hosts is done during the base

exchange and the message exchange is protected with using methods provided by base exchange. Changing of connection parameters means basically that the old ESP SA is removed and a new one is generated once the UPDATE message exchange has been completed. The message exchange is protected using the HIP association keys. Both HMAC and signing of packets is used.



## **9. IANA Considerations**

This document defines additional parameters for the Host Identity Protocol [5]. These parameters are defined in [Section 5.1.1](#) and [Section 5.1.2](#) with the following numbers:

- o ESP\_INFO is 65.
- o ESP\_TRANSFORM is 4095.



## **10. Acknowledgments**

This document was separated from the base "Host Identity Protocol" specification in the beginning of 2005. Since then, a number of people have contributed to the text by giving comments and modification proposals. The list of people include Tom Henderson, Jeff Ahrenholz, Jan Melen, Jukka Ylitalo, and Miika Komu. Authors want also thank Charlie Kaufman for reviewing the document with the eye on the usage of crypto algorithms.

Due to the history of this document, most of the ideas are inherited from the base "Host Identity Protocol" specification. Thus the list of people in the Acknowledgments section of that specification is also valid for this document. Many people have given valueable feedback, and our apologies for anyone whose name is missing.



## **11. References**

### **11.1. Normative references**

- [1] Bradner, S., "Key words for use in RFCs to Indicate Requirement Levels", [BCP 14](#), [RFC 2119](#), March 1997.
- [2] Madson, C. and R. Glenn, "The Use of HMAC-SHA-1-96 within ESP and AH", [RFC 2404](#), November 1998.
- [3] Frankel, S., Glenn, R., and S. Kelly, "The AES-CBC Cipher Algorithm and Its Use with IPsec", [RFC 3602](#), September 2003.
- [4] Kent, S., "IP Encapsulating Security Payload (ESP)", [draft-ietf-ipsec-esp-v3-10](#) (work in progress), March 2005.
- [5] Moskowitz, R., "Host Identity Protocol", [draft-ietf-hip-base-06](#) (work in progress), June 2006.
- [6] Schiller, J., "Cryptographic Algorithms for use in the Internet Key Exchange Version 2", [draft-ietf-ipsec-ikev2-algorithms-05](#) (work in progress), April 2004.
- [7] Moskowitz, R. and P. Nikander, "Host Identity Protocol Architecture", [draft-ietf-hip-arch-03](#) (work in progress), August 2005.
- [8] Schneier, B., "Applied Cryptography Second Edition: protocols algorithms and source in code in C", 1996.

### **11.2. Informative references**

- [9] Kent, S. and K. Seo, "Security Architecture for the Internet Protocol", [draft-ietf-ipsec-rfc2401bis-06](#) (work in progress), April 2005.
- [10] Harkins, D. and D. Carrel, "The Internet Key Exchange (IKE)", [RFC 2409](#), November 1998.
- [11] Melen, J. and P. Nikander, "A Bound End-to-End Tunnel (BEET) mode for ESP", [draft-nikander-esp-beet-mode-06](#) (work in progress), August 2006.
- [12] Nikander, P., "End-Host Mobility and Multihoming with the Host Identity Protocol", [draft-ietf-hip-mm-04](#) (work in progress), June 2006.





## [Appendix A.](#) A Note on Implementation Options

It is possible to implement this specification in multiple different ways. As noted above, one possible way of implementing is to rewrite

IP headers below IPsec. In such an implementation, IPsec is used as if it was processing IPv6 transport mode packets, with the IPv6 header containing HITs instead of IP addresses in the source and destination address fields. In outgoing packets, after IPsec processing, the HITs are replaced with actual IP addresses, based on the HITs and the SPI. In incoming packets, before IPsec processing, the IP addresses are replaced with HITs, based on the SPI in the incoming packet. In such an implementation, all IPsec policies are based on HITs and the upper layers only see packets with HITs in the place of IP addresses. Consequently, support of HIP does not conflict with other use of IPsec as long as the SPI spaces are kept separate.

Another way for implementing is to use the proposed BEET mode (A Bound End-to-End mode for ESP) [[11](#)]. The BEET mode provides some features from both IPsec tunnel and transport modes. The HIP uses HITs as the "inner" addresses and IP addresses as "outer" addresses like IP addresses are used in the tunnel mode. Instead of tunneling packets between hosts, a conversion between inner and outer addresses

is made at end-hosts and the inner address is never sent in the wire after the initial HIP negotiation. BEET provides IPsec transport mode syntax (no inner headers) with limited tunnel mode semantics (fixed logical inner addresses - the HITs - and changeable outer IP addresses).

Compared to the option of implementing the required address rewrites outside of IPsec, BEET has one implementation level benefit. The BEET-way of implementing the address rewriting keeps all the configuration information in one place, at the SADB. On the other hand, when address rewriting is implemented separately, the implementation must make sure that the information in the SADB and the separate address rewriting DB are kept in synchrony. As a result, the BEET mode based way of implementing is RECOMMENDED over the separate implementation.



Authors' Addresses

Petri Jokela  
Ericsson Research NomadicLab  
JORVAS FIN-02420  
FINLAND

Phone: +358 9 299 1  
Email: petri.jokela@nomadiclab.com

Robert Moskowitz  
ICSALabs, a Division of TruSecure Corporation  
1000 Bent Creek Blvd, Suite 200  
Mechanicsburg, PA  
USA

Email: rgm@icsalabs.com

Pekka Nikander  
Ericsson Research NomadicLab  
JORVAS FIN-02420  
FINLAND

Phone: +358 9 299 1  
Email: pekka.nikander@nomadiclab.com



## Intellectual Property Statement

The IETF takes no position regarding the validity or scope of any Intellectual Property Rights or other rights that might be claimed to pertain to the implementation or use of the technology described in this document or the extent to which any license under such rights might or might not be available; nor does it represent that it has made any independent effort to identify any such rights.

### Information

on the procedures with respect to rights in RFC documents can be found in [BCP 78](#) and [BCP 79](#).

Copies of IPR disclosures made to the IETF Secretariat and any assurances of licenses to be made available, or the result of an attempt made to obtain a general license or permission for the use of such proprietary rights by implementers or users of this specification can be obtained from the IETF on-line IPR repository at <http://www.ietf.org/ipr>.

The IETF invites any interested party to bring to its attention any copyrights, patents or patent applications, or other proprietary rights that may cover technology that may be required to implement this standard. Please address the information to the IETF at [ietf-ipr@ietf.org](mailto:ietf-ipr@ietf.org).

## Disclaimer of Validity

This document and the information contained herein are provided on an

"AS IS" basis and THE CONTRIBUTOR, THE ORGANIZATION HE/SHE REPRESENTS

OR IS SPONSORED BY (IF ANY), THE INTERNET SOCIETY AND THE INTERNET ENGINEERING TASK FORCE DISCLAIM ALL WARRANTIES, EXPRESS OR IMPLIED, INCLUDING BUT NOT LIMITED TO ANY WARRANTY THAT THE USE OF THE INFORMATION HEREIN WILL NOT INFRINGE ANY RIGHTS OR ANY IMPLIED WARRANTIES OF MERCHANTABILITY OR FITNESS FOR A PARTICULAR PURPOSE.

## Copyright Statement

Copyright (C) The Internet Society (2006). This document is subject to the rights, licenses and restrictions contained in [BCP 78](#), and except as set forth therein, the authors retain all their rights.

## Acknowledgment

Funding for the RFC Editor function is currently provided by the

Internet Society.

Jokela, et al.  
35]

Expires April 4, 2007

[Page