

Network Working Group  
Internet-Draft  
Intended status: Standards Track  
Expires: June 25, 2018

E. Iovov  
Jitsi  
T. Stach  
Unaffiliated  
E. Marocco  
Telecom Italia  
C. Holmberg  
Ericsson  
December 22, 2017

**A Session Initiation Protocol (SIP) usage for Trickle ICE  
draft-ietf-mmusic-trickle-ice-sip-12**

**Abstract**

The Interactive Connectivity Establishment (ICE) protocol describes a Network Address Translator (NAT) traversal mechanism for UDP-based multimedia sessions established with the Offer/Answer model. The ICE extension for Incremental Provisioning of Candidates (Trickle ICE) defines a mechanism that allows ICE Agents to shorten session establishment delays by making the candidate gathering and connectivity checking phases of ICE non-blocking and by executing them in parallel.

This document defines usage semantics for Trickle ICE with the Session Initiation Protocol (SIP) and defines a new SIP Info Package.

**Status of This Memo**

This Internet-Draft is submitted in full conformance with the provisions of [BCP 78](#) and [BCP 79](#).

Internet-Drafts are working documents of the Internet Engineering Task Force (IETF). Note that other groups may also distribute working documents as Internet-Drafts. The list of current Internet-Drafts is at <https://datatracker.ietf.org/drafts/current/>.

Internet-Drafts are draft documents valid for a maximum of six months and may be updated, replaced, or obsoleted by other documents at any time. It is inappropriate to use Internet-Drafts as reference material or to cite them other than as "work in progress."

This Internet-Draft will expire on June 25, 2018.

## Copyright Notice

Copyright (c) 2017 IETF Trust and the persons identified as the document authors. All rights reserved.

This document is subject to [BCP 78](#) and the IETF Trust's Legal Provisions Relating to IETF Documents (<https://trustee.ietf.org/license-info>) in effect on the date of publication of this document. Please review these documents carefully, as they describe your rights and restrictions with respect to this document. Code Components extracted from this document must include Simplified BSD License text as described in Section 4.e of the Trust Legal Provisions and are provided without warranty as described in the Simplified BSD License.

## Table of Contents

<a href="#">1.</a>	Introduction . . . . .	<a href="#">3</a>
<a href="#">2.</a>	Terminology . . . . .	<a href="#">4</a>
<a href="#">3.</a>	Protocol Overview . . . . .	<a href="#">4</a>
<a href="#">3.1.</a>	Discovery issues . . . . .	<a href="#">5</a>
<a href="#">3.2.</a>	Relationship with the Offer/Answer Model . . . . .	<a href="#">6</a>
<a href="#">4.</a>	Incremental Signaling of ICE candidates . . . . .	<a href="#">7</a>
<a href="#">4.1.</a>	Initial Offer/Answer exchange . . . . .	<a href="#">8</a>
<a href="#">4.1.1.</a>	Sending the initial Offer . . . . .	<a href="#">8</a>
<a href="#">4.1.2.</a>	Receiving the initial Offer . . . . .	<a href="#">9</a>
<a href="#">4.1.3.</a>	Sending the initial Answer . . . . .	<a href="#">9</a>
<a href="#">4.1.4.</a>	Receiving the initial Answer . . . . .	<a href="#">10</a>
<a href="#">4.2.</a>	Subsequent Offer/Answer exchanges . . . . .	<a href="#">10</a>
<a href="#">4.3.</a>	Establishing the dialog . . . . .	<a href="#">10</a>
4.3.1.	Establishing dialog state through reliable Offer/Answer delivery . . . . .	<a href="#">11</a>
4.3.2.	Establishing dialog state through unreliable Offer/Answer delivery . . . . .	<a href="#">12</a>
<a href="#">4.3.3.</a>	Initiating Trickle ICE without an SDP Answer . . . . .	<a href="#">14</a>
<a href="#">4.3.4.</a>	Considerations for Third Party Call Control . . . . .	<a href="#">15</a>
<a href="#">4.4.</a>	Delivering candidates in INFO messages . . . . .	<a href="#">17</a>
<a href="#">5.</a>	Initial discovery of Trickle ICE support . . . . .	<a href="#">21</a>
<a href="#">5.1.</a>	Provisioning support for Trickle ICE . . . . .	<a href="#">22</a>
5.2.	Trickle ICE discovery with Globally Routable User Agent URIs . . . . .	<a href="#">22</a>
<a href="#">5.3.</a>	Fall-back to Half Trickle . . . . .	<a href="#">23</a>
<a href="#">6.</a>	Considerations for RTP and RTCP multiplexing . . . . .	<a href="#">24</a>
<a href="#">7.</a>	Considerations for Media Multiplexing . . . . .	<a href="#">26</a>
<a href="#">8.</a>	SDP 'end-of-candidate' Attribute . . . . .	<a href="#">29</a>
<a href="#">8.1.</a>	Definition . . . . .	<a href="#">29</a>
<a href="#">8.2.</a>	Offer/Answer procedures . . . . .	<a href="#">30</a>
<a href="#">9.</a>	Content Type 'application/trickle-ice-sdpfrag' . . . . .	<a href="#">30</a>



9.1.	Overall Description . . . . .	30
9.2.	Grammar . . . . .	30
10.	Info Package . . . . .	32
10.1.	Rationale - Why INFO? . . . . .	32
10.2.	Overall Description . . . . .	33
10.3.	Applicability . . . . .	33
10.4.	Info Package Name . . . . .	33
10.5.	Info Package Parameters . . . . .	33
10.6.	SIP Option Tags . . . . .	33
10.7.	Info Request Body Parts . . . . .	34
10.8.	Info Package Usage Restrictions . . . . .	34
10.9.	Rate of INFO Requests . . . . .	34
10.10.	Info Package Security Considerations . . . . .	34
11.	Deployment Considerations . . . . .	34
12.	IANA Considerations . . . . .	34
12.1.	SDP 'end-of-candidate' Attribute . . . . .	35
12.2.	application/trickle-ice-sdpfrag Media Type . . . . .	35
12.3.	SIP Info Package 'trickle-ice' . . . . .	37
12.4.	SIP Option Tag 'trickle-ice' . . . . .	37
13.	Security Considerations . . . . .	38
14.	Acknowledgements . . . . .	38
15.	Change Log . . . . .	38
16.	References . . . . .	41
16.1.	Normative References . . . . .	41
16.2.	Informative References . . . . .	44
	Authors' Addresses . . . . .	44

## 1. Introduction

The Interactive Connectivity Establishment (ICE) protocol [I-D.ietf-ice-rfc5245bis] describes a mechanism for Network Address Translator (NAT) traversal that consists of three main phases.

During the first phase an agent gathers a set of candidate transport addresses (source IP address, port and transport protocol). This is followed by a second phase where these candidates are sent to a remote agent. There, the gathering procedure is repeated and candidates are sent to the first agent. Finally, a third phase starts where connectivity between all candidates in both sets is checked (connectivity checks). Once these phases have been completed, and only then, both agents can begin communication.

According to [I-D.ietf-ice-rfc5245bis] the three phases above happen consecutively, in a blocking way, which can introduce undesirable setup delay during session establishment. The Trickle ICE extension [I-D.ietf-ice-trickle] defines generic semantics required for these ICE phases to happen in a parallel, non-blocking way and hence speed up session establishment.



This specification defines a usage of Trickle ICE with the Session Initiation Protocol (SIP) [[RFC3261](#)]. It describes how ICE candidates are to be exchanged incrementally with SIP INFO requests [[RFC6086](#)] and how the Half Trickle and Full Trickle modes defined in [[I-D.ietf-ice-trickle](#)] are to be used by SIP User Agents (UAs) depending on their expectations for support of Trickle ICE by a remote agent.

This document defines a new Info Package as specified in [[RFC6086](#)] for use with Trickle ICE.

## **2. Terminology**

The key words "MUST", "MUST NOT", "REQUIRED", "SHALL", "SHALL NOT", "SHOULD", "SHOULD NOT", "RECOMMENDED", "NOT RECOMMENDED", "MAY", and "OPTIONAL" in this document are to be interpreted as described in [BCP 14](#) [[RFC2119](#)], [[RFC8174](#)] when, and only when, they appear in all capitals, as shown here.

This specification makes use of terminology defined by the protocol for Interactive Connectivity Establishment in [[I-D.ietf-ice-rfc5245bis](#)] and its Trickle ICE extension [[I-D.ietf-ice-trickle](#)]. It is assumed that the reader will be familiar with the terminology from both documents.

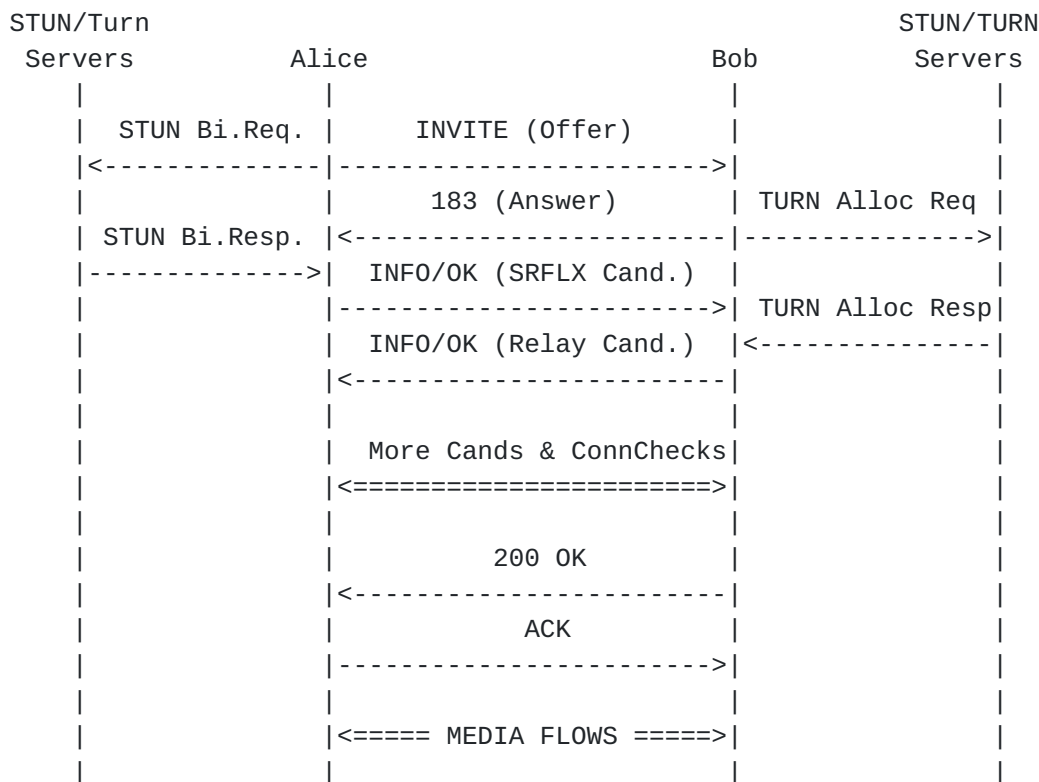
## **3. Protocol Overview**

When using ICE for SIP according to [[I-D.ietf-mmusic-ice-sip-sdp](#)] the ICE candidates are exchanged solely via SDP Offer/Answer as per [[RFC3264](#)]. This specification defines an additional mechanism where candidates can be exchanged using SIP INFO messages and a newly defined Info Package [[RFC6086](#)]. This allows ICE candidates also to be sent in parallel to an ongoing Offer/Answer negotiation and/or after the completion of the Offer/Answer negotiation.

Typically, in cases where Trickle ICE is fully supported, the Offerer would send an INVITE request containing a subset of candidates. Once an early dialog is established the Offerer can continue sending candidates in INFO requests within that dialog.

Similarly, an Answerer can send ICE candidates using INFO requests within the dialog established by its 18x provisional response. Figure 1 shows such a sample exchange:





Note: SRFLX denotes server-reflexive candidates

Figure 1: Sample Trickle ICE scenario with SIP

### 3.1. Discovery issues

In order to benefit from Trickle ICE's full potential and reduce session establishment latency to a minimum, Trickle ICE agents need to generate SDP Offers and Answers that contain incomplete, potentially empty sets of candidates. Such Offers and Answers can only be handled meaningfully by agents that actually support incremental candidate provisioning, which implies the need to confirm such support before actually using it.

Contrary to other protocols, where "in advance" capability discovery is widely implemented, the mechanisms that allow this for SIP (i.e., a combination of UA Capabilities [[RFC3840](#)] and GRUU [[RFC5627](#)]) have only seen low levels of adoption. This presents an issue for Trickle ICE implementations as SIP UAs do not have an obvious means of verifying that their peer will support incremental candidate provisioning.

The Half Trickle mode of operation defined in the Trickle ICE specification [[I-D.ietf-ice-trickle](#)] provides one way around this, by requiring the first Offer to contain a complete set of local ICE





candidates and only using incremental provisioning of remote candidates for the rest of the session.

While using Half Trickle does provide a working solution it also comes at the price of increased latency. [Section 5](#) therefore makes several alternative suggestions that enable SIP UAs to engage in Full Trickle right from their first Offer: [Section 5.1](#) discusses the use of on-line provisioning as a means of allowing use of Trickle ICE for all endpoints in controlled environments. [Section 5.2](#) describes anticipatory discovery for implementations that actually do support GRUU and UA Capabilities and [Section 5.3](#) discusses the implementation and use of Half Trickle by SIP UAs where none of the above are an option.

### **[3.2.](#) Relationship with the Offer/Answer Model**

From the perspective of SIP middle boxes and proxies the Offer/Answer exchange looks partly similar for Trickle ICE as it would for regular ICE for SIP [[I-D.ietf-mmusic-ice-sip-sdp](#)]. However, in order to have the full picture of the candidate exchange, the newly introduced INFO messages need to be considered as well.



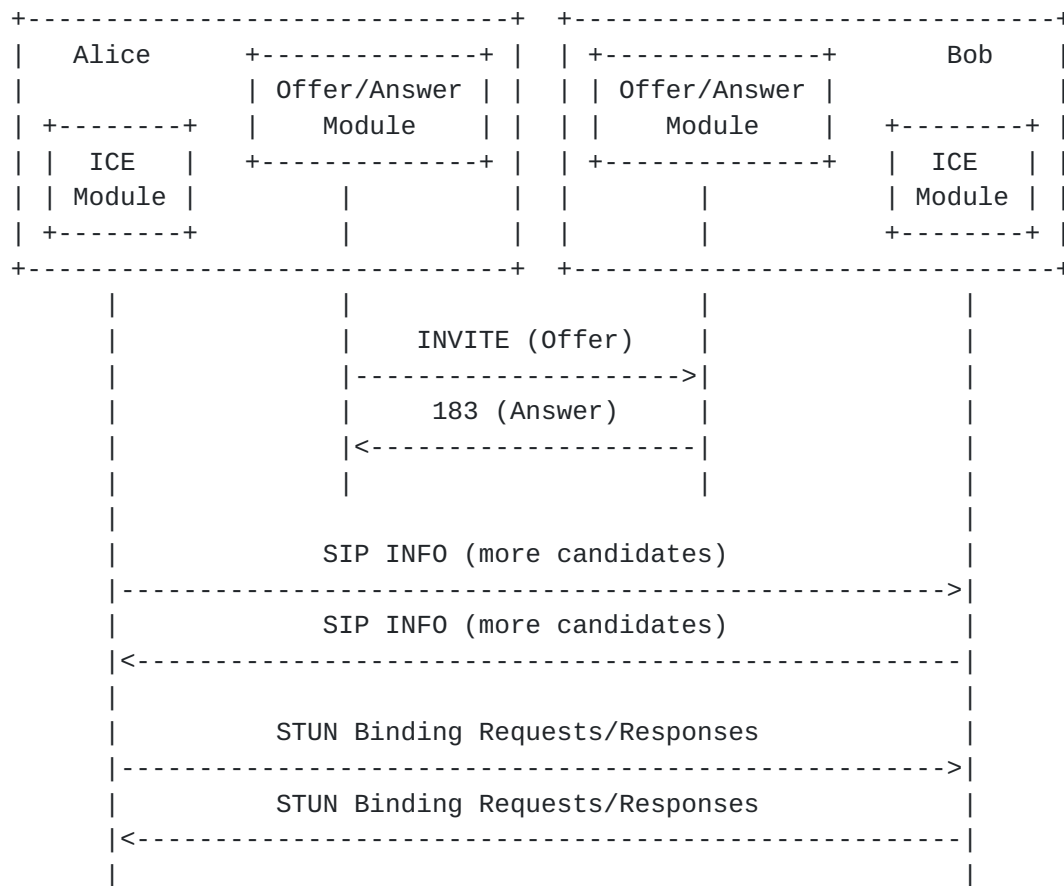


Figure 2: Distinguishing between Trickle ICE and traditional signaling.

From an architectural viewpoint, as displayed in Figure 2, exchanging candidates through SIP INFO requests could be represented as signaling between ICE modules and not between Offer/Answer modules of SIP User Agents. Then, such INFO requests do not impact the state of the Offer/Answer transaction other than providing additional candidates. Consequently, INFO requests are not considered Offers or Answers. Nevertheless, candidates that have been exchanged using INFO requests SHALL be included in subsequent Offers or Answers. The version number in the "o=" line of that subsequent Offer would need to be incremented by 1 per the rules in [RFC3264].

#### 4. Incremental Signaling of ICE candidates

Trickle ICE Agents will exchange ICE descriptions compliant to [I-D.ietf-ice-trickle] via Offer/Answer procedures and/or INFO request bodies. This requires the following SIP-specific extensions:



1. Trickle ICE Agents MUST indicate support for Trickle ICE by including the SIP option-tag 'trickle-ice' in a SIP Supported: header field within all SIP INVITE requests and responses.
2. Trickle ICE Agents MUST indicate support for Trickle ICE by including the ice-option 'trickle' within all SDP Offers and Answers in accordance to [[I-D.ietf-ice-trickle](#)].
3. Trickle ICE Agents MAY include any number of ICE candidates, i.e. from zero to the complete set of candidates, in their initial Offer or Answer. If the complete candidate set is included already in the initial Offer, this is called Half-Trickle.
4. Trickle ICE Agents MAY exchange additional ICE candidates using INFO requests within an existing INVITE dialog usage (including an early dialog) as specified in [[RFC6086](#)]. The INFO requests carry an Info-Package: trickle-ice. Trickle ICE Agents MUST be prepared to receive INFO requests within that same dialog usage, containing additional candidates and/or an indication that trickling of such candidates has ended.
5. Trickle ICE Agents MAY exchange additional ICE candidates before the Answerer has sent the Answer provided that an invite dialog usage is established at both Trickle ICE Agents. Note that in case of forking multiple early dialogs may exist.

The following sections provide further details on how Trickle ICE Agents perform the initial Offers/Answers exchange ([Section 4.1](#)), perform subsequent Offers/Answers exchanges ([Section 4.2](#)) and establish the INVITE dialog usage ([Section 4.3](#)) such that they can incrementally trickle candidates ([Section 4.4](#)).

#### **[4.1](#). Initial Offer/Answer exchange**

##### **[4.1.1](#). Sending the initial Offer**

If the Offerer includes candidates in its initial Offer, it MUST encode these candidates as specified in [[I-D.ietf-mmusic-ice-sip-sdp](#)].

If the Offerer wants to send its initial Offer before knowing any candidate for one or more media descriptions, it MUST set the port to the default value '9' for these media descriptions. If the Offerer does not want to include the host IP address in the corresponding c-line, e.g. due to privacy reasons, it SHOULD include a default address in the c-line, which is set to the IPv4 address 0.0.0.0 or to the IPv6 equivalent ::.



In this case, the Offerer obviously cannot know the RTCP transport address and, thus, MUST NOT include the "a=rtcp" attribute [[RFC6086](#)]. This avoids potential ICE mismatch (see [[I-D.ietf-mmusic-ice-sip-sdp](#)]) for the RTCP transport address.

If the Offerer wants to use RTCP multiplexing [[RFC5761](#)] and/or exclusive RTCP multiplexing [[I-D.ietf-mmusic-mux-exclusive](#)], it still will include the "a=rtcp-mux" and/or "a=rctcp-mux-only" attribute in the initial Offer.

In any case, the Offerer MUST include the attribute "a=ice-options:trickle" in accordance to [[I-D.ietf-ice-trickle](#)] and MUST include in each "m="-line a "a=mid:" attribute in accordance to [[RFC5888](#)].

#### **4.1.2. Receiving the initial Offer**

If the initial Offer included candidates, the Answerer uses these candidates to start ICE processing as specified in [[I-D.ietf-ice-trickle](#)].

If the initial Offer included the attribute a=ice-options:trickle, the Answerer MUST be prepared for receiving trickled candidates later on.

In case of a "m/c=" line with default values none of the eventually trickled candidates will match the default destination. This situation MUST NOT cause an ICE mismatch (see [[I-D.ietf-mmusic-ice-sip-sdp](#)]).

#### **4.1.3. Sending the initial Answer**

If the Answerer includes candidates in its initial Answerer, it MUST encode these candidates as specified in [[I-D.ietf-mmusic-ice-sip-sdp](#)].

If the Answerer wants to send its initial Answer before knowing any candidate for one or more media descriptions, it MUST set the port to the default value '9' for these media descriptions. If the Answerer does not want to include the host IP address in the corresponding c-line, e.g. due to privacy reasons, it SHOULD include a default address in the c-line, which is set to the IPv4 address 0.0.0.0 or to the IPv6 equivalent ::.

In this case, the Answerer obviously cannot know the RTCP transport address and, thus, MUST NOT include the "a=rtcp" attribute [[RFC6086](#)]. This avoids potential ICE mismatch (see [[I-D.ietf-mmusic-ice-sip-sdp](#)]) for the RTCP transport address.





If the Answerer accepts to use RTCP multiplexing [[RFC5761](#)] and/or exclusive RTCP multiplexing [[I-D.ietf-mmusic-mux-exclusive](#)], it will include the "a=rtcp-mux" attribute in the initial Answer.

In any case, the Answerer MUST include the attribute "a=ice-options:trickle" in accordance to [[I-D.ietf-ice-trickle](#)] and MUST include in each "m="-line a "a=mid:" attribute in accordance to [[RFC5888](#)].

#### **[4.1.4.](#) Receiving the initial Answer**

If the initial Answer included candidates, the Offerer uses these candidates to start ICE processing as specified in [[I-D.ietf-ice-trickle](#)].

If the initial Answer included the attribute a=ice-options:trickle, the Offerer MUST be prepared for receiving trickled candidates later on.

In case of a "m/c=" line with default values none of the eventually trickled candidates will match the default destination. This situation MUST NOT cause an ICE mismatch (see [[I-D.ietf-mmusic-ice-sip-sdp](#)]).

#### **[4.2.](#) Subsequent Offer/Answer exchanges**

Subsequent Offer/Answer exchanges are handled as for regular ICE (see section 4.2 of [[I-D.ietf-mmusic-ice-sip-sdp](#)]).

If an Offer or Answer needs to be sent while the ICE agents are in the middle of trickling section 4.2.1.2.1 of [[I-D.ietf-mmusic-ice-sip-sdp](#)) applies. This means that an ICE agent includes candidate attributes for all local candidates it had trickled previously for a specific media stream.

[RFC EDITOR NOTE: The [section 4.2.1.2.1](#) in above sentence is correct for version 16 of said I-D. Authors need to cross-check during Auth48 since it could have have changed in the meantime.]

#### **[4.3.](#) Establishing the dialog**

In order to be able to start trickling, the following two conditions need to be satisfied at the SIP UAs:

- o Trickle ICE support at the peer agent MUST be confirmed.
- o The dialog at both peers MUST be in early or confirmed state.



[Section 5](#) discusses in detail the various options for satisfying the first of the above conditions. Regardless of those mechanisms, however, agents are certain to have a clear understanding of whether their peers support trickle ICE once an Offer and an Answer have been exchanged, which also allows for ICE processing to commence (see Figure 3).

#### **4.3.1. Establishing dialog state through reliable Offer/Answer delivery**



Note: SRFLX denotes server-reflexive candidates

Figure 3: SIP Offerer can freely trickle as soon as it receives an Answer.

As shown in Figure 3 satisfying both conditions is relatively trivial for ICE Agents that have sent an Offer in an INVITE and that have received an Answer in a reliable provisional response. It is guaranteed to have confirmed support for Trickle ICE at the Answerer (or lack thereof) and to have fully initialized the SIP dialog at both ends. Offerers and Answerers (after receipt of the PRACK request) in the above situation can therefore freely commence trickling within the newly established dialog.



#### 4.3.2. Establishing dialog state through unreliable Offer/Answer delivery

The situation is a bit more delicate for agents that have received an Offer in an INVITE request and have sent an Answer in an unreliable provisional response because, once the response has been sent, the Answerer does not know when or if it has been received (Figure 4).

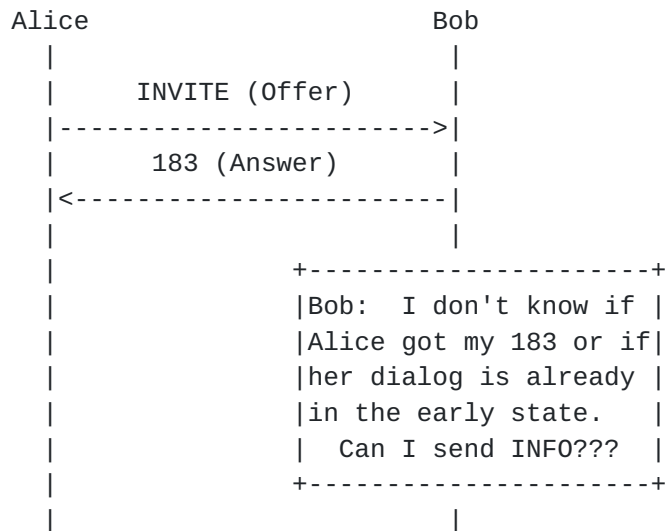


Figure 4: A SIP UA that sent an Answer in an unreliable provisional response does not know if it was received and if the dialog at the side of the Offerer has entered the early state

In order to clear this ambiguity as soon as possible, the Answerer needs to retransmit the provisional response with the exponential back-off timers described in [RFC3262]. These retransmissions MUST cease on receipt of an INFO request or on transmission of the Answer in a 2xx response. This is similar to the procedure described in section 8.1.1 of [I-D.ietf-mmusic-ice-sip-sdp] except that the STUN binding Request is replaced by the INFO request.

[RFC EDITOR NOTE: The [section 8.1.1](#) in above sentence is correct for version 16 of said I-D. Authors need to cross-check during Auth48 since it could have have changed in the meantime.]

The Offerer MUST send a Trickle ICE INFO request as soon as it receives an SDP Answer in an unreliable provisional response. This INFO request MUST repeat the candidates that were already provided in the Offer (as would be the case when Half Trickle is performed or when new candidates have not been learned since then).

If available, the Offerer SHOULD also deliver newly learned candidates in this INFO request, unless it wants to hold back some

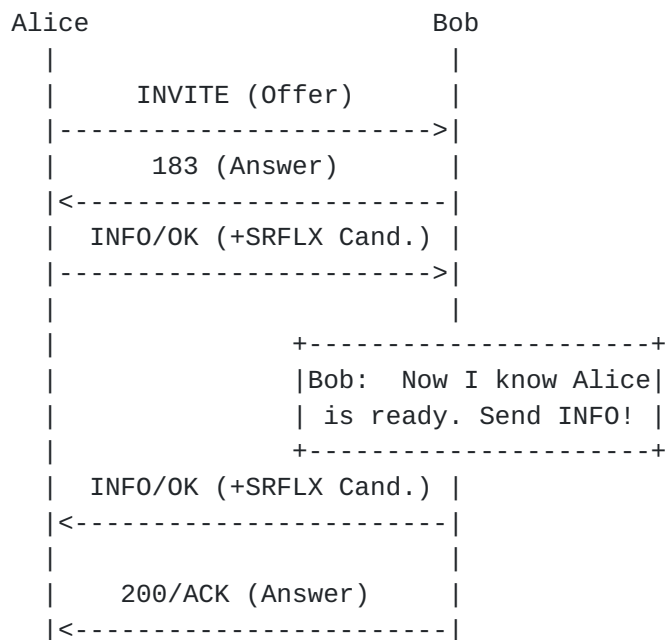


candidates in reserve, e.g. in case that these candidates are expensive to use and would only be trickled if all other candidates failed.

The Offerer SHOULD include an end-of-candidates attribute in case candidate discovery has ended in the mean time and no further candidates are to be trickled.

As soon as an Answerer has received such an INFO request, the Answerer has an indication that a dialog is established at both ends and can begin trickling (Figure 5).

Note: The +SRFLX in Figure 5 indicates that additionally newly learned server-reflexive candidates are included.



Note: SRFLX denotes server-reflexive candidates

Figure 5: A SIP UA that received an INFO request after sending an unreliable provisional response knows that the dialog at the side of the receiver has entered the early state

When sending the Answer in the 200 OK response to the INVITE request, the Answerer needs to repeat exactly the same Answer that was previously sent in the unreliable provisional response in order to fulfill the corresponding requirements in [RFC3264]. Thus, the Offerer needs to be prepared for receiving a different number of candidates in that repeated Answer than previously exchanged via





trickling and MUST ignore the candidate information in that 200 OK response.

#### **4.3.3. Initiating Trickle ICE without an SDP Answer**

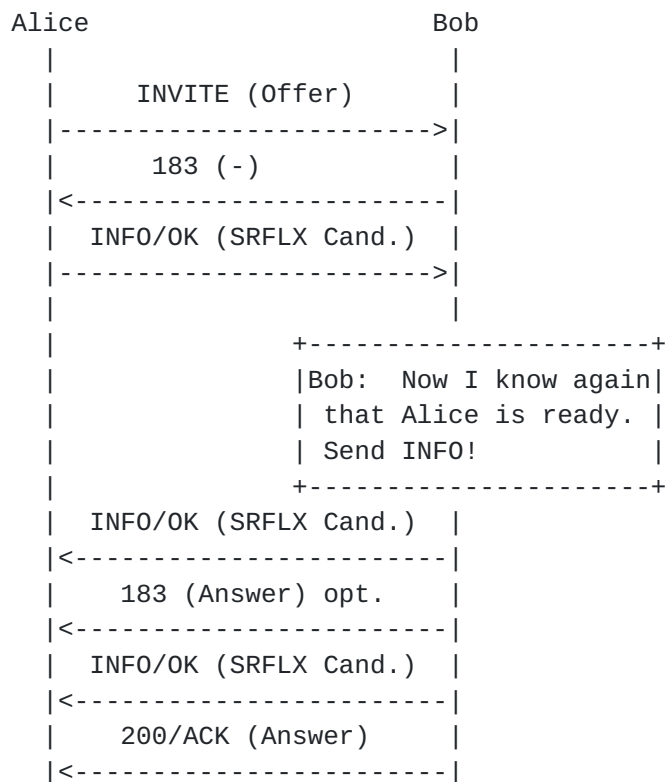
The ability to convey arbitrary candidates in INFO message bodies allows ICE Agents to initiate trickling without actually sending an Answer. Trickle ICE Agents can therefore respond to an INVITE request with provisional responses without an SDP Answer [[RFC3261](#)]. Such provisional responses serve for establishing an early dialog.

Agents that choose to establish the dialog in this way, MUST retransmit these responses with the exponential back-off timers described in [[RFC3262](#)]. These retransmissions MUST cease on receipt of an INFO request or on transmission of the Answer in a 2xx response. This is again similar to the procedure described in section 8.1.1 of [[I-D.ietf-mmusic-ice-sip-sdp](#)] except that an Answer is not yet provided.

[RFC EDITOR NOTE: The [section 8.1.1](#) in above sentence is correct for version 16 of said I-D. Authors need to cross-check during Auth48 since it could have have changed in the meantime.]

Note: The +SRFLX in Figure 6 indicates that additionally newly learned server-reflexive candidates are included.





Note: SRFLX denotes server-reflexive candidates

Figure 6: A SIP UA sends an unreliable provisional response without an Answer for establishing an early dialog

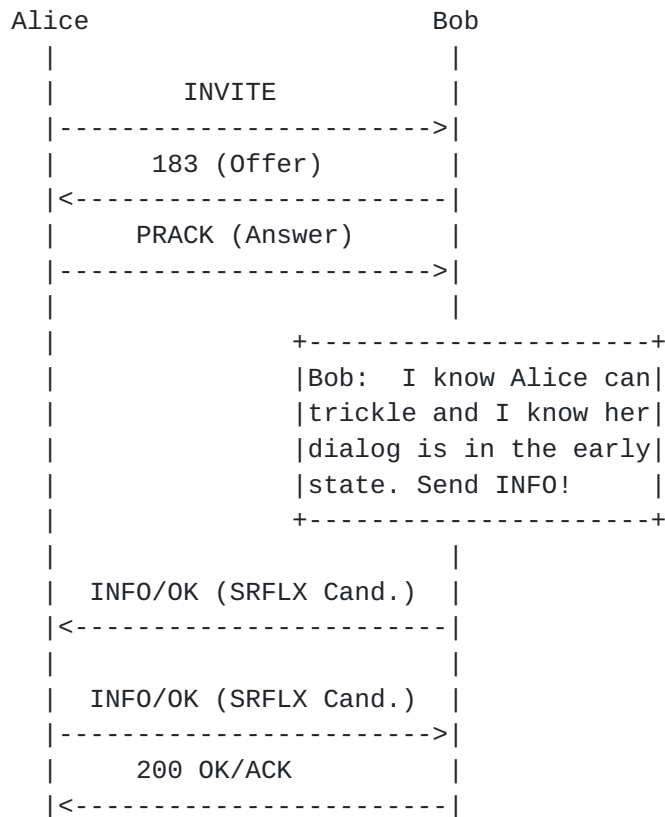
When sending the Answer, the agent MUST repeat all currently known and used candidates, if any, and MAY include all newly gathered candidates since the last INFO request was sent. However, if that Answer was already sent in a unreliable provisional response, the Answerers MUST repeat exactly the same Answer in the 200 OK response to the INVITE request in order to fulfill the corresponding requirements in [RFC3264]. In case that trickling continued, an Offerer needs to be prepared for receiving fewer candidates in that repeated Answer than previously exchanged via trickling and MUST ignore the candidate information in that 200 OK response.

#### 4.3.4. Considerations for Third Party Call Control

Third Party Call Control (3PCC) for SIP can be performed using several signaling variants as described in [RFC3725]. We give specific consideration for 3PCC that starts with an offerless INVITE request [RFC3261]. Then, a User Agent Client (UAC) has the option to send its Offer in a reliable provisional response [RFC3262] or in the 200 OK response to the INVITE request.



Agents that had sent an Offer in a reliable provisional response and that received an Answer in a PRACK request [[RFC3262](#)] are also in a situation where support for Trickle ICE is confirmed and the SIP dialog is guaranteed to be in a state that would allow in-dialog INFO requests (see Figure 7).



Note: SRFLX denotes server-reflexive candidates

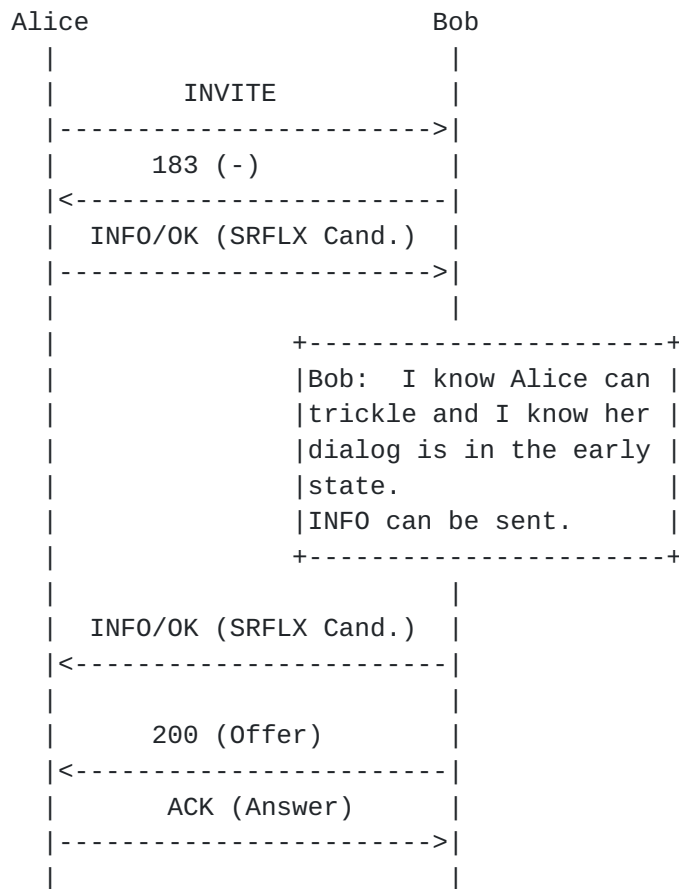
Figure 7: A SIP Offerer in a 3PCC scenario can also freely start trickling as soon as it receives an Answer.

Trickle ICE Agents that send an Offer in a 200 OK response and receive an Answer in an ACK message can still create a dialog and confirm support for Trickle ICE by sending an unreliable provisional response similar to [Section 4.3.3](#). According to [[RFC3261](#)], this unreliable response cannot contain an Offer.

The Trickle ICE Agent, i.e. the user Agent server (UAS), retransmits the provisional response with the exponential back-off timers described in [[RFC3262](#)]. Retransmits MUST cease on receipt of an INFO request or on transmission of the Answer in a 2xx response. The peer Trickle ICE Agent (the UAC) MUST send a Trickle ICE INFO request as



soon as they receive an unreliable provisional response (see Figure 8).



Note: SRFLX denotes server-reflexive candidates

Figure 8: A SIP UAC in a 3PCC scenario can also freely start trickling as soon as it receives an unreliable provisional response.

#### 4.4. Delivering candidates in INFO messages

Whenever new ICE candidates become available for sending, agents would encode them in "a=candidate" attributes as described by [I-D.ietf-mmusic-ice-sip-sdp]. For example:

```

a=candidate:2 1 UDP 1694498815 2001:db8:a0b:12f0::3 5000 typ srflx
raddr 2001:db8:a0b:12f0::1 rport 8998
  
```

The use of SIP INFO requests happens within the context of the Info Package as defined [Section 10](#). The Media Type [[RFC6838](#)] for their





payload MUST be set to 'application/trickle-ice-sdpfrag' as defined in [Section 9](#).

Since neither the "a=candidate" nor the "a=end-of-candidates" attributes contain information that would allow correlating them to a specific "m=" line, this is handled through the use of pseudo "m=" lines and identification tags in "a=mid:" attributes as defined in [\[RFC5888\]](#). Pseudo "m=" lines follow the SDP syntax for "m=" lines as defined in [\[RFC4566\]](#), but provide no semantics other than indicating to which "m=" line a candidate belongs. Consequently, the receiving agent MUST ignore any remaining content of the pseudo "m=" line, which is not defined in this document. This guarantees that the 'application/trickle-ice-sdpfrag' bodies do not interfere with the Offer/Answer procedures as specified in [\[RFC3264\]](#).

When sending the INFO request, the agent MAY, if already known to the agent, include the same content into the pseudo "m=" line as for the "m=" line in the corresponding Offer or Answer. However, since Trickle-ICE might be decoupled from the Offer/Answer negotiation this content might be unknown to the agent. In this case, the agent MUST include the following default values.

- o The media field is set to 'audio'.
- o The port value is set to '9'.
- o The proto value is set to 'RTP/AVP'.
- o The fmt field MUST appear only once and is set to '0'

Agents MUST include a pseudo "m=" line and an identification tag in a "a=mid:" attribute for every "m=" line whose candidate list they intend to update. Such "a=mid:" attributes MUST immediately precede the list of candidates for that specific "m=" line. All "a=candidate" or "a=end-of-candidates" attributes following an "a=mid:" attribute, up until (and excluding) the next occurrence of a pseudo "m=" line, pertain to the "m=" line identified by that identification tag. An "a=end-of-candidates" attribute, preceding any pseudo "m=" line, indicates the end of all trickling from that agent, as opposed to end of trickling for a specific "m=" line, which would be indicated by a media level "a=end-of-candidates" attribute.

Refer to Figure 9 for an example of the INFO request content.

The use of pseudo "m=" lines allows for a structure similar to the one in SDP Offers and Answers where separate media-level and session-level sections can be distinguished. In the current case, lines preceding any pseudo "m=" line are considered to be session-level.



Lines appearing in between or after pseudo "m=" lines will be interpreted as media-level.

Note that while this specification uses the "a=mid:" attribute from [\[RFC5888\]](#), it does not define any grouping semantics. Consequently, the "a=group:" attribute from that same specification is neither needed nor used in Trickle ICE for SIP.

All INFO requests MUST carry the "a=ice-pwd:" and "a=ice-ufrag:" attributes that would allow mapping them to a specific ICE generation. An agent MUST discard any received INFO requests containing "a=ice-pwd:" and "a=ice-ufrag:" attributes that do not match those of the current ICE Negotiation Session.

The "a=ice-pwd:" and "a=ice-ufrag:" attributes MUST appear at the same level as the ones in the Offer/Answer exchange. In other words, if they were present as session-level attributes, they will also appear at the beginning of all INFO request payloads, i.e. preceding all pseudo "m=" lines. If they were originally exchanged as media level attributes, potentially overriding session-level values, then they will also be included in INFO request payloads following the corresponding pseudo "m=" lines.

Note that [\[I-D.ietf-ice-trickle\]](#) requires that when candidates are trickled, each candidate must be delivered to the receiving Trickle ICE implementation not more than once and in the same order as it was conveyed. If the signaling protocol provides any candidate retransmissions, they need to be hidden from the ICE implementation. This requirement is fulfilled as follows.

Since the agent is not fully aware of the state of the ICE Negotiation Session at its peer it MUST include all currently known and used local candidates in every INFO request. I.e. the agent MUST repeat in the INFO request body all candidates that were previously sent under the same combination of "a=ice-pwd:" and "a=ice-ufrag:" in the same order as they were gathered. In other words, the sequence of a previously sent list of candidates MUST NOT change in subsequent INFO requests and newly gathered candidates MUST be added at the end of that list. Although repeating all candidates creates some overhead, it also allows easier handling of problems that could arise from unreliable transports, like e.g. loss of messages and reordering, which can be detected through the CSeq: header field in the INFO request.

When receiving INFO requests carrying any candidates, agents will therefore first identify and discard the attribute lines containing candidates they have already received in previous INFO requests or in the Offer/Answer exchange preceding them. Two candidates are



considered to be equal if their IP address port, transport and component ID are the same. After identifying and discarding known candidates, the agents MUST forward the actually new candidates to the ICE Agents in the same order as they were received in the INFO request body. The ICE Agents will then process the new candidates according to the rules described in [[I-D.ietf-ice-trickle](#)].

Receiving an "a=end-of-candidates" attribute in an INFO request body - with the "a=ice-ufrag" and "a=ice-pwd" attributes matching the current ICE generation - is an indication from the peer agent that it will not send any further candidates. When included at session level, i.e. before any pseudo "m=" line, this indication applies to the whole session; when included at media level the indication applies only to the corresponding "m=" line. Handling of such end-of-candidate indications is defined in [[I-D.ietf-ice-trickle](#)].

Note: At the time of writing this specification there were ongoing discussions if a functionality for removing already exchanged candidates would be useful. Such a functionality is out of the scope of this specification and most likely needs to be signaled by means of a yet to be defined ICE extension, although it could in principle be achieved quite easily, e.g. without anticipating any solution by simply omitting a previously sent candidate from a subsequent INFO request. However, if an implementation according to this specification receives such an INFO request with a missing candidate it would have to treat that as an exceptional case. Implementing appropriate recovery procedures at the receiving side is advisable for this situation. Ignoring that a candidate was missing might be a sensible strategy.

The example in Figure 9 shows the content of a candidate delivering INFO request. In the example the "a=end-of-candidates" attributes indicate that the candidate gathering is finished and that no further INFO requests follow.



```
INFO sip:alice@example.com SIP/2.0
...
Info-Package: trickle-ice
Content-type: application/trickle-ice-sdpfrag
Content-Disposition: Info-Package
Content-length: 862

a=ice-pwd:asd88fgpdd777uzjYhagZg
a=ice-ufrag:8hhY
m=audio 9 RTP/AVP 0
a=mid:1
a=candidate:1 1 UDP 2130706431 2001:db8:a0b:12f0::1 5000 typ host
a=candidate:1 2 UDP 2130706431 2001:db8:a0b:12f0::1 5001 typ host
a=candidate:2 1 UDP 1694498815 2001:db8:a0b:12f0::3 5000 typ srflx
    raddr 2001:db8:a0b:12f0::1 rport 8998
a=candidate:2 2 UDP 1694498815 2001:db8:a0b:12f0::3 5001 typ srflx
    raddr 2001:db8:a0b:12f0::1 rport 8998
a=end-of-candidates
m=audio 9 RTP/AVP 0
a=mid:2
a=candidate:1 1 UDP 2130706431 2001:db8:a0b:12f0::1 6000 typ host
a=candidate:1 2 UDP 2130706431 2001:db8:a0b:12f0::1 6001 typ host
a=candidate:2 1 UDP 1694498815 2001:db8:a0b:12f0::3 6000 typ srflx
    raddr 2001:db8:a0b:12f0::1 rport 9998
a=candidate:2 2 UDP 1694498815 2001:db8:a0b:12f0::3 6001 typ srflx
    raddr 2001:db8:a0b:12f0::1 rport 9998
a=end-of-candidates
```

Note: In a real INFO request there would be no line breaks  
in the a=candidate: attributes

Figure 9: An Example for the Content of an INFO Request

## 5. Initial discovery of Trickle ICE support

SIP User Agents (UAs) that support and intend to use trickle ICE are required by [[I-D.ietf-ice-trickle](#)] to indicate that in their Offers and Answers using the following attribute: "a=ice-options:trickle". This makes discovery fairly straightforward for Answerers or for cases where Offers need to be generated within existing dialogs (i.e., when sending UPDATE or re-INVITE requests). In both scenarios prior SDP would have provided the necessary information.

Obviously, prior SDP is not available at the time a first Offer is being constructed and it is therefore impossible for ICE Agents to





determine support for incremental provisioning that way. The following options are suggested as ways of addressing this issue.

### **5.1. Provisioning support for Trickle ICE**

In certain situations it may be possible for integrators deploying Trickle ICE to know in advance that some or all endpoints reachable from within the deployment will support Trickle ICE. This is the case, for example, if Session Border Controllers (SBC) with support for this specification are used to connect to UAs that do not support Trickle ICE.

While the exact mechanism for allowing such provisioning is out of scope here, this specification encourages trickle ICE implementations to allow the option in the way they find most appropriate.

### **5.2. Trickle ICE discovery with Globally Routable User Agent URIs**

[RFC3840] provides a way for SIP User Agents to query for support of specific capabilities using, among others, OPTIONS requests. Support for Globally Routable User Agent URIs (GRUU) according to [\[RFC5627\]](#) on the other hand allows SIP requests to be addressed to specific UAs (as opposed to arbitrary instances of an address of record). Combining the two and using the "trickle-ice" option tag defined in [Section 10.6](#) provides SIP UAs with a way of learning the capabilities of specific SIP UA instances and then addressing them directly with INVITE requests that require Trickle ICE support.

Such learning of capabilities may happen in different ways. One option for a SIP UA would be to learn the GRUU instance ID of a peer through presence and then to query its capabilities with an OPTIONS request. Alternatively, it can also just send an OPTIONS request to the AOR it intends to contact and then inspect the returned response(s) for support of both GRUU and Trickle ICE (Figure 10). It is noted that using the GRUU means that the INVITE request can go only to that particular device. This circumvents to use of forking for that request.



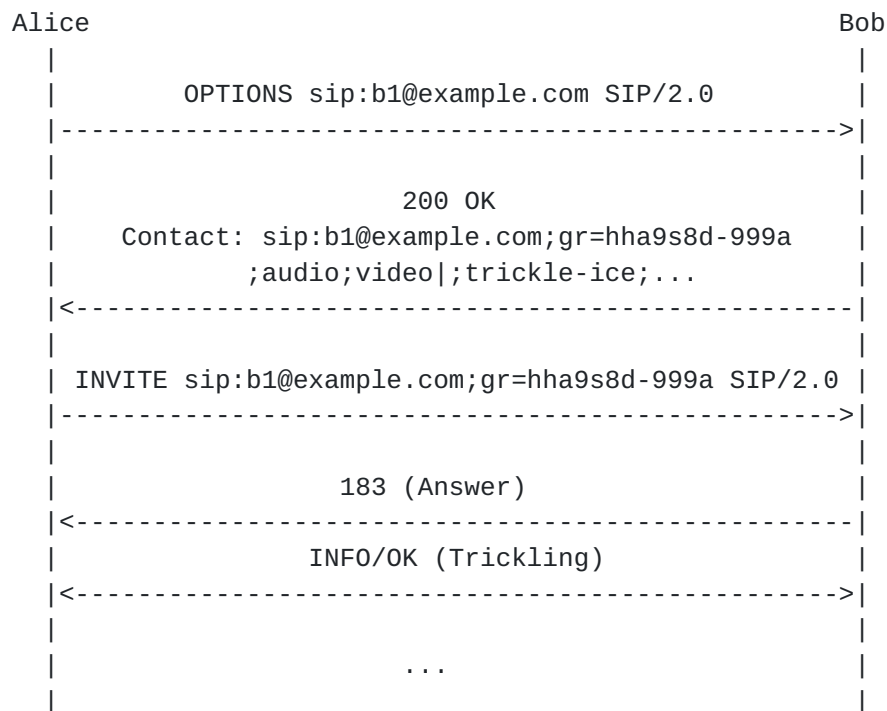


Figure 10: Trickle ICE support discovery with OPTIONS and GRUU

Confirming support for Trickle ICE through [\[RFC3840\]](#) gives SIP UAs the options to engage in Full Trickle negotiation (as opposed to the more lengthy Half Trickle) from the very first Offer they send.

### 5.3. Fall-back to Half Trickle

In cases where none of the other mechanisms in this section are acceptable, SIP UAs should use the Half Trickle mode defined in [\[I-D.ietf-ice-trickle\]](#). With Half Trickle, agents initiate sessions the same way they would when using ICE for SIP [\[I-D.ietf-mmusic-ice-sip-sdp\]](#). This means that, prior to actually sending an Offer, agents would first gather ICE candidates in a blocking way and then send them all in that Offer. The blocking nature of the process would likely imply that some amount of latency will be accumulated and it is advised that agents try to anticipate it where possible, like for example, when user actions indicate a high likelihood for an imminent call (e.g., activity on a keypad or a phone going off-hook).

Using Half Trickle would result in Offers that are compatible with both ICE SIP endpoints and legacy [\[RFC3264\]](#) endpoints.



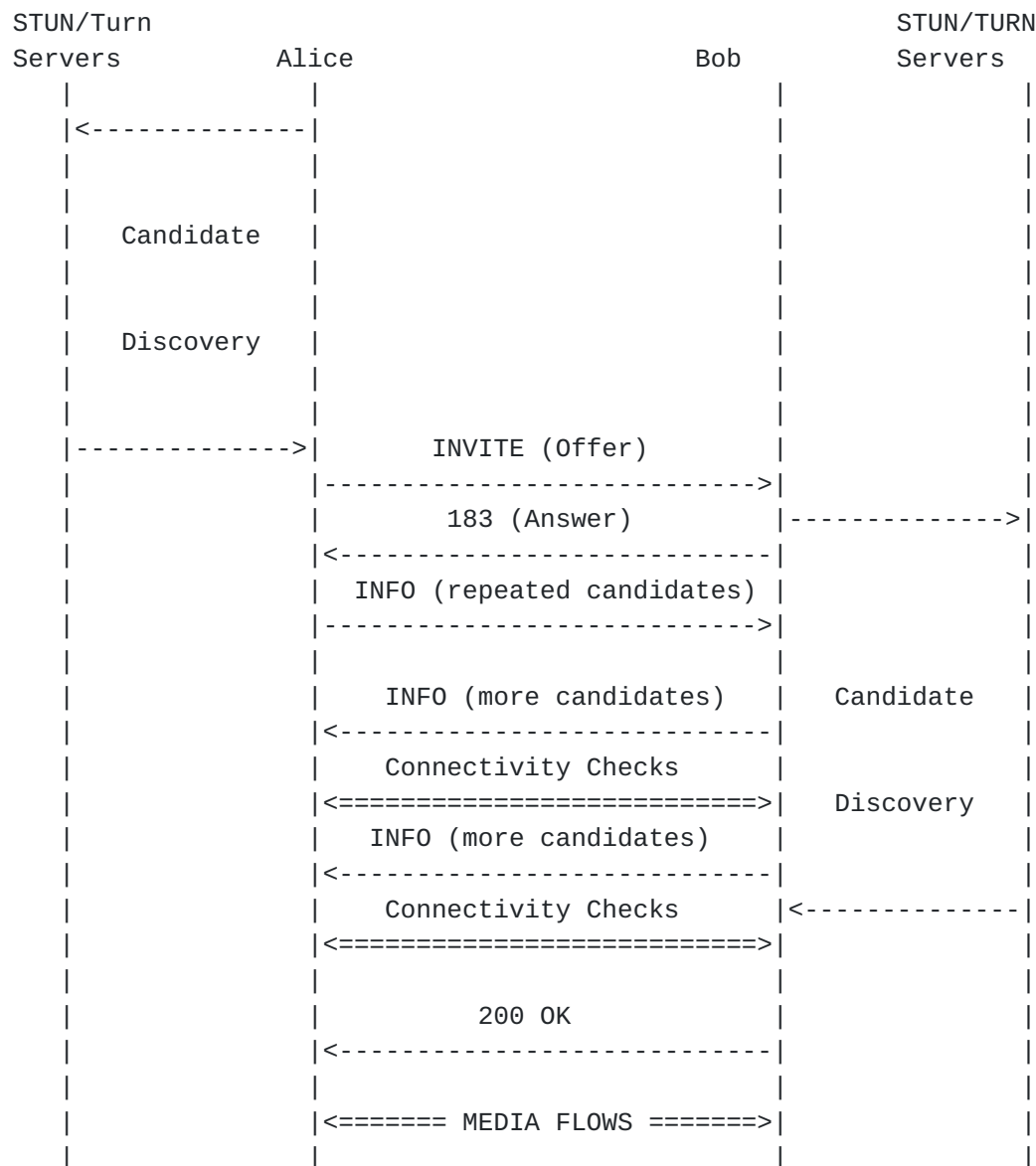


Figure 11: Example - A typical (Half) Trickle ICE exchange with SIP

It is worth reminding that once a single Offer or Answer had been exchanged within a specific dialog, support for Trickle ICE will have been determined. No further use of Half Trickle will therefore be necessary within that same dialog and all subsequent exchanges can use the Full Trickle mode of operation.

## 6. Considerations for RTP and RTCP multiplexing

The following consideration describe options for Trickle-ICE in order to give some guidance to implementors on how trickling can be optimized with respect to providing RTCP candidates.



Handling of the "a=rtcp" attribute [[RFC3605](#)] and the "a=rtcp-mux" attribute for RTP/RTCP multiplexing [[RFC5761](#)] is already considered in section 5.1.1.1. of [[I-D.ietf-ice-rfc5245bis](#)] and as well in [[RFC5761](#)] itself. These considerations are still valid for Trickle ICE, however, trickling provides more flexibility for the sequence of candidate exchange in case of RTCP multiplexing.

[RFC EDITOR NOTE: The [section 5.1.1.1](#) in above sentence is correct for version 15 of said I-D. Authors need to cross-check during Auth48 since it could have have changed in the meantime.]

If the Offerer supports RTP/RTCP multiplexing exclusively as specified in [[I-D.ietf-mmusic-mux-exclusive](#)], the procedures in that document apply for the handling of the "a=rtcp-mux-only", "a=rtcp" and the "a=rtcp-mux" attributes.

While a Half Trickle Offerer would have to send an Offer compliant to [[I-D.ietf-mmusic-ice-sip-sdp](#)] and [[RFC5761](#)] including candidates for all components, this flexibility allows a Full Trickle Offerer to send only RTP candidates (component 1) in the initial Offer if it assumes that RTCP multiplexing is supported by the Answerer. A Full Trickle Offerer would need to start gathering and trickling RTCP candidates (component 2) only after having received an indication in the Answer that the Answerer unexpectedly does not support RTCP multiplexing.

A Trickle Answerer MAY include an "a=rtcp-mux" attribute [[RFC5761](#)] in the application/trickle-ice-sdpfrag body if it supports and uses RTP and RTCP multiplexing. The Trickle Answerer needs to follow the guidance on the usage of the "a=rtcp" attribute as given in [[I-D.ietf-mmusic-ice-sip-sdp](#)] and [[RFC3605](#)]. Receipt of this attribute at the Offerer in an INFO request prior to the Answer indicates that the Answerer supports and uses RTP and RTCP multiplexing. The Offerer can use this information e.g. for stopping gathering of RTCP candidates and/or for freeing corresponding resources.

This behavior is illustrated by the following example Offer that indicates support for RTP and RTCP multiplexing.





```
v=0
o=alice 2890844526 2890844526 IN IP6 atlanta.example.com
s=
c=IN IP6 2001:db8:a0b:12f0::3
t=0 0
a=ice-pwd:777uzjYhagZgasd88fgpdd
a=ice-ufrag:Yhh8
m=audio 5000 RTP/AVP 0
a=mid:1
a=rtcp-mux
a=candidate:1 1 UDP 1658497328 2001:db8:a0b:12f0::3 5000 typ host
```

Once the dialog is established as described in section [Section 4.3](#) the Answerer sends the following INFO request.

```
INFO sip:alice@example.com SIP/2.0
...
Info-Package: trickle-ice
Content-type: application/sdp
Content-Disposition: Info-Package
Content-length: 161

a=ice-pwd:asd88fgpdd777uzjYhagZg
a=ice-ufrag:8hhY
m=audio 9 RTP/AVP 0
a=mid:1
a=rtcp-mux
a=candidate:1 1 UDP 1658497382 2001:db8:a0b:12f0::4 6000 typ host
```

This INFO request indicates that the Answerer supports and uses RTP and RTCP multiplexing as well. It allows the Offerer to omit gathering of RTCP candidates or releasing already gathered RTCP candidates. If the INFO request did not contain the `a=rtcp-mux` attribute, the Offerer would have to gather RTCP candidates unless it wants to wait until receipt of an Answer that eventually confirms support or non-support for RTP and RTCP multiplexing.

## **7. Considerations for Media Multiplexing**

The following considerations describe options for Trickle-ICE in order to give some guidance to implementors on how trickling can be optimized with respect to providing candidates in case of Media Multiplexing [[I-D.ietf-mmusic-sdp-bundle-negotiation](#)]. It is assumed that the reader is familiar with [[I-D.ietf-mmusic-sdp-bundle-negotiation](#)].



ICE candidate exchange is already considered in section 11 of [\[I-D.ietf-mmusic-sdp-bundle-negotiation\]](#). These considerations are still valid for Trickle ICE, however, trickling provides more flexibility for the sequence of candidate exchange, especially in Full Trickle mode.

Except for bundle-only "m=" lines, a Half Trickle Offerer would have to send an Offer with candidates for all bundled "m=" lines. The additional flexibility, however, allows a Full Trickle Offerer to initially send only candidates for the "m=" line with the suggested Offerer BUNDLE address.

On receipt of the Answer, the Offerer will detect if BUNDLE is supported by the Answerer and if the suggested Offerer BUNDLE address was selected. In this case, the Offerer does not need to trickle further candidates for the remaining "m=" lines in a bundle. However, if BUNDLE is not supported, the Full Trickle Offerer needs to gather and trickle candidates for the remaining "m=" lines as necessary. If the Answerer selects an Offerer BUNDLE address different from the suggested Offerer BUNDLE address, the Full Trickle Offerer needs to gather and trickle candidates for the "m=" line that carries the selected Offerer BUNDLE address.

A Trickle Answerer SHOULD include an "a=group: BUNDLE" attribute [\[I-D.ietf-mmusic-sdp-bundle-negotiation\]](#) in the application/trickle-ice-sdpfrag body if it supports and uses bundling. When doing so, the Answerer MUST include all identification-tags in the same order that is used or will be used in the Answer.

Receipt of this attribute at the Offerer in an INFO request prior to the Answer indicates that the Answerer supports and uses bundling. The Offerer can use this information e.g. for stopping the gathering of candidates for the remaining "m=" lines in a bundle and/or for freeing corresponding resources.

This behaviour is illustrated by the following example Offer that indicates support for Media Multiplexing.



```
v=0
o=alice 2890844526 2890844526 IN IP6 atlanta.example.com
s=
c=IN IP6 2001:db8:a0b:12f0::3
t=0 0
a=group:BUNDLE foo bar
a=ice-pwd:777uzjYhagZgasd88fgpdd
a=ice-ufrag:Yhh8
m=audio 10000 RTP/AVP 0
a=mid:foo
a=rtcp-mux
a=rtpmap:0 PCMU/8000
a=extmap 1 urn:ietf:params:rtp-hdrext:sdes:mid
a=candidate:1 1 UDP 1658497328 2001:db8:a0b:12f0::3 10000 typ host
m=video 10002 RTP/AVP 31
a=mid:bar
a=rtcp-mux
a=rtpmap:31 H261/90000
a=extmap 1 urn:ietf:params:rtp-hdrext:sdes:mid
```

The example Offer indicates support for RTP and RTCP multiplexing and contains a "a=candidate" attribute only for the m-line with the suggested Offerer bundle address. Once the dialog is established as described in [Section 4.3](#) the Answerer sends the following INFO request.

```
INFO sip:alice@example.com SIP/2.0
...
Info-Package: trickle-ice
Content-type: application/sdp
Content-Disposition: Info-Package
Content-length: 219

a=group:BUNDLE foo bar
a=ice-pwd:asd88fgpdd777uzjYhagZg
a=ice-ufrag:8hhY
m=audio 9 RTP/AVP 0
a=mid:foo
a=rtcp-mux
a=candidate:1 1 UDP 1658497328 2001:db8:a0b:12f0::3 5000 typ host
m=audio 9 RTP/AVP 0
a=mid:bar
```



This INFO request indicates that the Answerer supports and uses Media Multiplexing as well. Note, that the second "m=" line shows the default values as specified in section [Section 4.4](#), e.g. media set 'audio' although 'video' was offered. The receiving ICE Agents MUST ignore these default values in the pseudo "m=" lines.

The INFO request also indicates that the Answerer accepted the suggested Offerer Bundle Address. This allows the Offerer to omit gathering of RTP and RTCP candidates for the other "m=" lines or releasing already gathered candidates. If the INFO request did not contain the a=group:BUNDLE attribute, the Offerer would have to gather RTP and RTCP candidates for the other "m=" lines unless it wants to wait until receipt of an Answer that eventually confirms support or non-support for Media Multiplexing.

Independent of using Full Trickle or Half Trickle mode, the rules from [[I-D.ietf-mmusic-sdp-mux-attributes](#)] apply to both, Offerer and Answerer, when putting attributes as specified in [Section 9.2](#) in the application/trickle-ice-sdpfrag body.

## **[8.](#) SDP 'end-of-candidate' Attribute**

### **[8.1.](#) Definition**

This section defines a new SDP media-level and session-level attribute [[RFC4566](#)] 'end-of-candidate'. 'end-of-candidate' is a property attribute [[RFC4566](#)], and hence has no value. By including this attribute in an Offer or Answer the sending agent indicates that it will not trickle further candidates. When included at session level this indication applies to the whole session, when included at media level the indication applies only to the corresponding media description.

Name: end-of-candidate

Value: N/A

Usage Level: media and session-level

Charset Dependent: no

Mux Category: IDENTICAL

Example: a=end-of-candidate





## **8.2. Offer/Answer procedures**

The Offerer or Answerer MAY include an "a=end-of-candidates" attribute in case candidate discovery has ended and no further candidates are to be trickled. The Offerer or Answerer MUST provide the "a=end-of-candidates" attribute together with the "a=ice-ufrag" and "a=ice-pwd" attributes of the current ICE generation as required by [I-D.ietf-ice-trickle]. When included at session level this indication applies to the whole session; when included at media level the indication applies only to the corresponding media description.

Receipt of an "a=end-of-candidates" attribute at an Offerer or Answerer - with the "a=ice-ufrag" and "a=ice-pwd" attributes matching the current ICE generation - indicates that gathering of candidates has ended at the peer, either for the session or only for the corresponding media description as specified above. The receiving agent forwards an end-of-candidates indication to the ICE Agent, which in turn acts as specified in [I-D.ietf-ice-trickle].

## **9. Content Type 'application/trickle-ice-sdpfrag'**

### **9.1. Overall Description**

A application/trickle-ice-sdpfrag body is used exclusively by the 'trickle-ice' Info Package. Other SDP related applications need to define their own media type. The INFO request body uses a subset of the possible SDP lines as defined by the grammar defined in [RFC4566]. A valid body uses only pseudo "m=" lines and certain attributes that are needed and/or useful for trickling candidates. The content adheres to the following grammar.

### **9.2. Grammar**

The grammar of an 'application/trickle-ice-sdpfrag' body is based on the following ABNF [RFC5234]. It specifies the subset of existing SDP attributes, that is needed or useful for trickling candidates. The grammar uses the indicator for case-sensitivity %s as defined in [RFC7405], but also imports grammars for other SDP attributes that precede the production of [RFC7405]. A sender SHOULD stick to lower-case for such grammars, but a receiver MUST treat them case-insensitive.



```

; Syntax
trickle-ice-sdpfrag =  session-level-fields
                        pseudo-media-descriptions
session-level-fields = [bundle-group-attribute CRLF]
                        [ice-lite-attribute CRLF]
                        ice-pwd-attribute CRLF
                        ice-ufrag-attribute CRLF
                        [ice-options-attribute CRLF]
                        [ice-pacing-attribute CRLF]
                        [end-of-candidates-attribute CRLF]
                        extension-attribute-fields
                        ; for future extensions

ice-lite-attribute    = %s"a" "=" ice-lite
ice-pwd-attribute     = %s"a" "=" ice-pwd-att
ice-ufrag-attribute   = %s"a" "=" ice-ufrag-att
ice-pacing-attribute  = %s"a" "=" ice-pacing-att
ice-options-attribute = %s"a" "=" ice-options
bundle-group-attribute = %s"a" "=" %s"group:" bundle-semantic
                        *(SP identification-tag)
bundle-semantic = "BUNDLE"
end-of-candidates-attribute = %s"a" "=" end-of-candidates
end-of-candidates         = %s"end-of-candidates"
extension-attribute-fields = attribute-fields

pseudo-media-descriptions = *( media-field
                                trickle-ice-attribute-fields
                                [extension-attribute-fields] )
                                ; for future extensions
trickle-ice-attribute-fields = %s"a" "=" mid-attribute CRLF
                              [%s"a" "=" %s"rtcp" CRLF]
                              [%s"a" "=" %s"rtcp-mux" CRLF]
                              [%s"a" "=" %s"rtcp-mux-only" CRLF]
                              *(candidate-attributes CRLF)
                              [ice-pwd-attribute CRLF]
                              [ice-ufrag-attribute CRLF]
                              [remote-candidate-attribute CRLF]
                              [end-of-candidates-attribute CRLF]
remote-candidate-attribute = %s"a" "=" remote-candidate-att
candidate-attributes       = %s"a" "=" candidate-attribute

```

with ice-lite, ice-pwd-att, remote-candidate-att, ice-ufrag-att, ice-pacing-att, ice-options, candidate-attribute remote-candidate-att from [[I-D.ietf-mmusic-ice-sip-sdp](#)], identification-tag, mid-attribute ; from [[RFC5888](#)], media-field, attribute-fields from [[RFC4566](#)]. The "a=rtcp" attribute is defined in [[RFC3605](#)], the "a=rtcp-mux" attribute in [[RFC5761](#)] and the "a=rtcp-mux-only" attribute in



[[I-D.ietf-mmusic-mux-exclusive](#)]. The latter attributes lack a formal grammar in their corresponding RFC and are reproduced here.

An Agent MUST ignore any received unknown extension-attribute-fields.

## **[10.](#) Info Package**

### **[10.1.](#) Rationale - Why INFO?**

The decision to use SIP INFO requests as a candidate transport method is based primarily on their lightweight nature. Once a dialog has been established, INFO requests can be exchanged both ways with no restrictions on timing and frequency and no risk of collision.

On the other hand, using Offer/Answer and UPDATE requests [[RFC3311](#)] would introduce the following complications:

Blocking of messages: [[RFC3264](#)] defines Offer/Answer as a strictly sequential mechanism. There can only be a maximum of one active exchange at any point of time. Both sides cannot simultaneously send Offers nor can they generate multiple Offers prior to receiving an Answer. Using UPDATE requests for candidate transport would therefore imply the implementation of a candidate pool at every agent where candidates can be stored until it is once again that agent's "turn" to emit an Answer or a new Offer. Such an approach would introduce non-negligible complexity for no additional value.

Elevated risk of glare: The sequential nature of Offer/Answer also makes it impossible for both sides to send Offers simultaneously. What's worse is that there are no mechanisms in SIP to actually prevent that. [[RFC3261](#)], where the situation of Offers crossing on the wire is described as "glare", only defines a procedure for addressing the issue after it has occurred. According to that procedure both Offers are invalidated and both sides need to retry the negotiation after a period between 0 and 4 seconds. The high likelihood for glare to occur and the average two second back-off intervals would imply Trickle ICE processing duration would not only fail to improve but actually exceed those of regular ICE.

INFO messages decouple the exchange of candidates from the Offer/Answer negotiation and are subject to none of the glare issues described above, which makes them a very convenient and lightweight mechanism for asynchronous delivery of candidates.

Using in-dialog INFO messages also provides a way of guaranteeing that candidates are delivered end-to-end, between the same entities that are actually in the process of initiating a session. Out-of-



dialog alternatives would have implied requiring support for Globally Routable UA URI (GRUU) [[RFC5627](#)] which, given GRUUs relatively low adoption levels, would have constituted too strong of a constraint to the adoption of Trickle ICE.

### **[10.2.](#) Overall Description**

This specification defines an Info Package for use by SIP User Agents implementing Trickle ICE. INFO requests carry ICE candidates discovered after the peer user agents have confirmed mutual support for Trickle ICE.

### **[10.3.](#) Applicability**

The purpose of the ICE protocol is to establish a media path in the presence of NAT and firewalls. The candidates are transported in INFO requests and are part of this establishment.

Candidates sent by a Trickle ICE Agent after the Offer, follow the same signaling path and reach the same entity as the Offer itself. While it is true that GRUUs can be used to achieve this, one of the goals of this specification is to allow operation of Trickle ICE in as many environments as possible including those without GRUU support. Using out-of-dialog SUBSCRIBE/NOTIFY requests would not satisfy this goal.

### **[10.4.](#) Info Package Name**

This document defines a SIP Info Package as per [[RFC6086](#)]. The Info Package token name for this package is "trickle-ice"

### **[10.5.](#) Info Package Parameters**

This document does not define any Info Package parameters.

### **[10.6.](#) SIP Option Tags**

[RFC6086] allows Info Package specifications to define SIP option-tags. This specification extends the option-tag construct of the SIP grammar as follows:

option-tag /= "trickle-ice"

SIP entities that support this specification MUST place the 'trickle-ice' option-tag in a SIP Supported: header field within all SIP INVITE requests and responses.





When responding to, or generating a SIP OPTIONS request a SIP entity MUST also include the 'trickle-ice' option-tag in a SIP Supported: header field.

#### **10.7. Info Request Body Parts**

Entities implementing this specification MUST include a payload of type 'application/trickle-ice-sdpfrag' as defined in [Section 9.2](#) in SIP INFO requests. The payload is used to convey SDP-encoded ICE candidates.

#### **10.8. Info Package Usage Restrictions**

This document does not define any Info Package Usage Restrictions.

#### **10.9. Rate of INFO Requests**

A Trickle ICE Agent with many network interfaces might create a high rate of INFO requests if every newly detected candidate is trickled individually without aggregation. Implementors that are concerned about loss of packets in such a case might consider aggregating ICE candidates and sending INFOS only at some configurable intervals.

#### **10.10. Info Package Security Considerations**

See [Section 13](#)

### **11. Deployment Considerations**

Trickle ICE uses two mechanism for exchange of candidate information. This imposes new requirements to certain middleboxes that are used in some networks, e.g. for monitoring purposes. While the first mechanism, SDP Offers and Answers, is already used by regular ICE and is assumed to be supported, the second mechanism, INFO request bodies, needs to be considered by such middleboxes as well when trickle ICE is used. Such middleboxes need to make sure that they remain in the signaling path of the INFO requests and need to understand the INFO request body.

### **12. IANA Considerations**

[RFC EDITOR NOTE: Please replace RFCXXXX with the RFC number of this document. ]



### **12.1. SDP 'end-of-candidate' Attribute**

This section defines a new SDP media-level and session-level attribute [[RFC4566](#)] , 'end-of-candidate'. 'end-of-candidate' is a property attribute [[RFC4566](#)] , and hence has no value.

Name: end-of-candidate

Value: N/A

Usage Level: media and session

Charset Dependent: no

Purpose: The sender indicates that it will not trickle further ICE candidates.

O/A Procedures: RFCXXX defines the detailed SDP Offer/Answer procedures for the 'end-of-candidate' attribute.

Mux Category: IDENTICAL

Reference: RFCXXXX

Example:

a=end-of-candidate

### **12.2. application/trickle-ice-sdpfrag Media Type**

This section defines a new Media Type 'application/trickle-ice-sdpfrag' in accordance with [[RFC6838](#)].

Type name: application

Subtype name: trickle-ice-sdpfrag

Required parameters: None.

Optional parameters: None.

Encoding considerations:



SDP files are primarily UTF-8 format text. Although the initially defined content of a trickle-ice-sdpfrag body does only include ASCII characters, UTF-8 encoded content might be introduced via extension attributes. The "a=charset:" attribute may be used to signal the presence of other character sets in certain parts of a trickle-ice-sdpfrag body (see [RFC4566]). Arbitrary binary content cannot be directly represented in SDP or a trickle-ice-sdpfrag body.

Security considerations:

See [RFC4566] and RFCXXXX

Interoperability considerations:

See RFCXXXX

Published specification:

See RFCXXXX

Applications which use this Media Type:

Trickle-ICE

Fragment identifier considerations: N/A

Additional information:

Deprecated alias names for this type: N/A

Magic number(s): N/A

File extension(s): N/A

Macintosh File Type Code(s): N/A

Person and email address to contact for further information:



The IESG (iesg@ietf.org)

Intended usage:

Trickle-ICE for SIP as specified in RFCXXXX.

Restrictions on usage: N/A

Author/Change controller:

The IESG (iesg@ietf.org)

Provisional registration? (standards tree only): N/A

### **12.3. SIP Info Package 'trickle-ice'**

This document defines a new SIP Info Package named 'trickle-ice' and updates the Info Packages Registry with the following entry.

+-----+-----+	
Name	Reference
+-----+-----+	
trickle-ice	[RFCXXXX]
+-----+-----+	

### **12.4. SIP Option Tag 'trickle-ice'**

This specification registers a new SIP option tag 'trickle-ice' as per the guidelines in [Section 27.1 of \[RFC3261\]](#) and updates the "Option Tags" section of the SIP Parameter Registry with the following entry:

+-----+-----+-----+		
Name	Description	Reference
+-----+-----+-----+		
trickle-ice	This option tag is used to indicate	[RFCXXXX]
	that a UA supports and understands	
	Trickle-ICE.	
+-----+-----+-----+		





### **13. Security Considerations**

The Security Considerations of [[I-D.ietf-mmusic-ice-sip-sdp](#)], [[RFC6086](#)] and [[I-D.ietf-ice-trickle](#)] apply. This document clarifies how the above specifications are used together for trickling candidates and does not create additional security risks.

The new Info Package 'trickle-ice' and the new Media Type 'application/trickle-ice-sdpfrag' do not introduce additional security considerations when used in the context of Trickle ICE. Both are not intended to be used for other applications, so any security considerations for its use in other contexts is out of the scope of this document

### **14. Acknowledgements**

The authors would like to thank Flemming Andreassen, Ayush Jain, Paul Kyzivat, Jonathan Lennox, Simon Perreault, Roman Shpount and Martin Thomson for reviewing and/or making various suggestions for improvements and optimizations.

The authors would also like to thank Flemming Andreassen for shepherding this document and Ben Campbell for his AD review and suggestions.

### **15. Change Log**

[RFC EDITOR NOTE: Please remove this section when publishing].

Changes from [draft-ietf-mmusic-trickle-ice-sip-01](#)

- o Editorial Clean up
- o IANA Consideration added
- o Security Consideration added
- o RTCP and BUNDLE Consideration added with rules for including "a=rtcp-mux" and "a=group: BUNDLLE" attributes
- o 3PCC Consideration added
- o Clarified that 18x w/o answer is sufficient to create a dialog that allows for trickling to start
- o Added remaining Info Package definition sections as outlined in [section 10 of \[RFC6086\]](#)



- o Added definition of application/sdpfrag making [draft-ivov-mmusic-sdpfrag](#) obsolete
- o Added pseudo m-lines as additional separator in sdpfrag bodies for Trickle ICE
- o Added ABNF for sdp-frag bodies and Trickle-ICE package

Changes from [draft-ietf-mmusic-trickle-ice-sip-02](#)

- o Removed definition of application/sdpfrag
- o Replaced with new type application/trickle-ice-sdpfrag
- o RTCP and BUNDLE Consideration enhanced with some examples
- o [draft-ietf-mmusic-sdp-bundle-negotiation](#) and [RFC5761](#) changed to normative reference
- o Removed reference to 4566bis
- o Addressed review comment from Simon Perreault

Changes from [draft-ietf-mmusic-trickle-ice-sip-03](#)

- o replaced reference to [RFC5245](#) with [draft-ietf-mmusic-rfc5245bis](#) and [draft-ietf-mmusic-ice-sip-sdp](#)
- o Corrected Figure 10, credits to Ayush Jain for finding the bug
- o Referencing a=rtcp and a=rtcp-mux handling from [draft-ietf-mmusic-ice-sip-sdp](#)
- o Referencing a=rtcp-mux-exclusive handling from [draft-ietf-mmusic-mux-exclusive](#), enhanced ABNF to support a=rtcp-mux-exclusive
- o Clarifying that [draft-ietf-mmusic-sdp-mux-attributes](#) applies for the application/trickle-ice-sdpfrag body

Changes from [draft-ietf-mmusic-trickle-ice-sip-04](#)

- o considered comments from Christer Holmberg
- o corrected grammar for INFO package, such that ice-ufrag/pwd are also allowed on media-level as specified in [\[I-D.ietf-mmusic-ice-sip-sdp\]](#)
- o Added new ice-pacing-attribute fom [\[I-D.ietf-mmusic-ice-sip-sdp\]](#)



- o Added formal definition for the end-of-candidates attribute

Changes from [draft-ietf-mmusic-trickle-ice-sip-05](#)

- o considered further comments from Christer Holmberg
- o editorial comments on [section 3](#) addressed
- o moved [section 3.1](#) to [section 10.1](#) and applied some edits
- o replaced the term "previously sent candidates" with "currently known and used candidates".

Changes from [draft-ietf-mmusic-trickle-ice-sip-06](#)

- o editorial fixes
- o additional text on the content of the INFO messages.
- o recommendation on what to do if a previously sent candidate is unexpectedly missing in a subsequent INFO
- o terminology alignment with [draft-ietf-ice-trickle-07](#)

Changes from [draft-ietf-mmusic-trickle-ice-sip-07](#)

- o editorial fixes
- o clarification on ordering of candidates for alignment with [draft-ietf-ice-trickle-12](#)
- o O/A procedures for end-of-candidates attribute described here after corresponding procedures have been removed from [draft-ietf-ice-trickle-11](#)
- o using IPv6 addresses in examples

Changes from [draft-ietf-mmusic-trickle-ice-sip-08](#)

- o editorial fixes/clarification based on Flemmings review
- o Description of Trickle specifics in O/A procedures for initial O/A exchange and specification of ICE mismatch exception

Changes from [draft-ietf-mmusic-trickle-ice-sip-09](#)

- o editorial fixes/correction of references



- o adding missing Ref to [RFC3605](#) in [section 6](#), 5th para
- o replaced remaining IPv4 addresses with IPv6
- o Added text for handling a=rtcp in case of default RTP address 0.0.0.0:9 based on comment from Roman Shpount.

Changes from [draft-ietf-mmusic-trickle-ice-sip-10](#)

- o editorial fixes due to idnits output

Changes from [draft-ietf-mmusic-trickle-ice-sip-11](#)

- o addressing comments from Ben Campbell's AD review and Christer's review
- o Numerous editorial improvements/corrections
- o Added [[RFC8174](#)] boiler plate and adapted usage of normative language
- o Clarified terminology ICE modules .vs. ICE agent
- o Added more detailed OA procedures
- o Corrected default values in m-line and usage of "a=mid:" attribute explicitly mentioned for offer/answer
- o Removed explicit mentioning of XMPP
- o Added Deployment Considerations section
- o Fixed ref for rfc5245bis

## **[16.](#) References**

### **[16.1.](#) Normative References**

[I-D.ietf-ice-rfc5245bis]

Keranen, A., Holmberg, C., and J. Rosenberg, "Interactive Connectivity Establishment (ICE): A Protocol for Network Address Translator (NAT) Traversal", [draft-ietf-ice-rfc5245bis-15](#) (work in progress), November 2017.





[I-D.ietf-ice-trickle]

Ivov, E., Rescorla, E., Uberti, J., and P. Saint-Andre, "Trickle ICE: Incremental Provisioning of Candidates for the Interactive Connectivity Establishment (ICE) Protocol", [draft-ietf-ice-trickle-15](#) (work in progress), November 2017.

[I-D.ietf-mmusic-ice-sip-sdp]

Petit-Huguenin, M., Keranen, A., and S. Nandakumar, "Session Description Protocol (SDP) Offer/Answer procedures for Interactive Connectivity Establishment (ICE)", [draft-ietf-mmusic-ice-sip-sdp-16](#) (work in progress), November 2017.

[I-D.ietf-mmusic-mux-exclusive]

Holmberg, C., "Indicating Exclusive Support of RTP/RTCP Multiplexing using SDP", [draft-ietf-mmusic-mux-exclusive-12](#) (work in progress), May 2017.

[I-D.ietf-mmusic-sdp-bundle-negotiation]

Holmberg, C., Alvestrand, H., and C. Jennings, "Negotiating Media Multiplexing Using the Session Description Protocol (SDP)", [draft-ietf-mmusic-sdp-bundle-negotiation-43](#) (work in progress), December 2017.

[I-D.ietf-mmusic-sdp-mux-attributes]

Nandakumar, S., "A Framework for SDP Attributes when Multiplexing", [draft-ietf-mmusic-sdp-mux-attributes-16](#) (work in progress), December 2016.

[RFC2119] Bradner, S., "Key words for use in RFCs to Indicate Requirement Levels", [BCP 14](#), [RFC 2119](#), DOI 10.17487/RFC2119, March 1997, <<https://www.rfc-editor.org/info/rfc2119>>.

[RFC3261] Rosenberg, J., Schulzrinne, H., Camarillo, G., Johnston, A., Peterson, J., Sparks, R., Handley, M., and E. Schooler, "SIP: Session Initiation Protocol", [RFC 3261](#), DOI 10.17487/RFC3261, June 2002, <<https://www.rfc-editor.org/info/rfc3261>>.

[RFC3262] Rosenberg, J. and H. Schulzrinne, "Reliability of Provisional Responses in Session Initiation Protocol (SIP)", [RFC 3262](#), DOI 10.17487/RFC3262, June 2002, <<https://www.rfc-editor.org/info/rfc3262>>.



- [RFC3264] Rosenberg, J. and H. Schulzrinne, "An Offer/Answer Model with Session Description Protocol (SDP)", [RFC 3264](#), DOI 10.17487/RFC3264, June 2002, <<https://www.rfc-editor.org/info/rfc3264>>.
- [RFC3605] Huitema, C., "Real Time Control Protocol (RTCP) attribute in Session Description Protocol (SDP)", [RFC 3605](#), DOI 10.17487/RFC3605, October 2003, <<https://www.rfc-editor.org/info/rfc3605>>.
- [RFC4566] Handley, M., Jacobson, V., and C. Perkins, "SDP: Session Description Protocol", [RFC 4566](#), DOI 10.17487/RFC4566, July 2006, <<https://www.rfc-editor.org/info/rfc4566>>.
- [RFC5234] Crocker, D., Ed. and P. Overell, "Augmented BNF for Syntax Specifications: ABNF", STD 68, [RFC 5234](#), DOI 10.17487/RFC5234, January 2008, <<https://www.rfc-editor.org/info/rfc5234>>.
- [RFC5761] Perkins, C. and M. Westerlund, "Multiplexing RTP Data and Control Packets on a Single Port", [RFC 5761](#), DOI 10.17487/RFC5761, April 2010, <<https://www.rfc-editor.org/info/rfc5761>>.
- [RFC5888] Camarillo, G. and H. Schulzrinne, "The Session Description Protocol (SDP) Grouping Framework", [RFC 5888](#), DOI 10.17487/RFC5888, June 2010, <<https://www.rfc-editor.org/info/rfc5888>>.
- [RFC6086] Holmberg, C., Burger, E., and H. Kaplan, "Session Initiation Protocol (SIP) INFO Method and Package Framework", [RFC 6086](#), DOI 10.17487/RFC6086, January 2011, <<https://www.rfc-editor.org/info/rfc6086>>.
- [RFC6838] Freed, N., Klensin, J., and T. Hansen, "Media Type Specifications and Registration Procedures", [BCP 13](#), [RFC 6838](#), DOI 10.17487/RFC6838, January 2013, <<https://www.rfc-editor.org/info/rfc6838>>.
- [RFC7405] Kyzivat, P., "Case-Sensitive String Support in ABNF", [RFC 7405](#), DOI 10.17487/RFC7405, December 2014, <<https://www.rfc-editor.org/info/rfc7405>>.
- [RFC8174] Leiba, B., "Ambiguity of Uppercase vs Lowercase in [RFC 2119](#) Key Words", [BCP 14](#), [RFC 8174](#), DOI 10.17487/RFC8174, May 2017, <<https://www.rfc-editor.org/info/rfc8174>>.



## **16.2. Informative References**

- [RFC3311] Rosenberg, J., "The Session Initiation Protocol (SIP) UPDATE Method", [RFC 3311](#), DOI 10.17487/RFC3311, October 2002, <<https://www.rfc-editor.org/info/rfc3311>>.
- [RFC3725] Rosenberg, J., Peterson, J., Schulzrinne, H., and G. Camarillo, "Best Current Practices for Third Party Call Control (3pcc) in the Session Initiation Protocol (SIP)", [BCP 85](#), [RFC 3725](#), DOI 10.17487/RFC3725, April 2004, <<https://www.rfc-editor.org/info/rfc3725>>.
- [RFC3840] Rosenberg, J., Schulzrinne, H., and P. Kyzivat, "Indicating User Agent Capabilities in the Session Initiation Protocol (SIP)", [RFC 3840](#), DOI 10.17487/RFC3840, August 2004, <<https://www.rfc-editor.org/info/rfc3840>>.
- [RFC5627] Rosenberg, J., "Obtaining and Using Globally Routable User Agent URIs (GRUUs) in the Session Initiation Protocol (SIP)", [RFC 5627](#), DOI 10.17487/RFC5627, October 2009, <<https://www.rfc-editor.org/info/rfc5627>>.

### Authors' Addresses

Emil Ivov  
Jitsi  
Strasbourg 67000  
France

Phone: +33 6 72 81 15 55  
Email: [emcho@jitsi.org](mailto:emcho@jitsi.org)

Thomas Stach  
Unaffiliated  
Vienna 1130  
Austria

Email: [thomass.stach@gmail.com](mailto:thomass.stach@gmail.com)



Enrico Marocco  
Telecom Italia  
Via G. Reiss Romoli, 274  
Turin 10148  
Italy

Email: [enrico.marocco@telecomitalia.it](mailto:enrico.marocco@telecomitalia.it)

Christer Holmberg  
Ericsson  
Hirsalantie 11  
Jorvas 02420  
Finland

Email: [christer.holmberg@ericsson.com](mailto:christer.holmberg@ericsson.com)



