

NFSv4  
Internet-Draft  
Intended status: Standards Track  
Expires: October 29, 2015

T. Haynes  
Primary Data  
April 27, 2015

**NFS Version 4 Minor Version 2**  
**draft-ietf-nfsv4-minorversion2-37.txt**

Abstract

This Internet-Draft describes NFS version 4 minor version two, describing the protocol extensions made from NFS version 4 minor version 1. Major extensions introduced in NFS version 4 minor version two include: Server Side Copy, Application I/O Advise, Space Reservations, Sparse Files, Application Data Blocks, and Labeled NFS.

Requirements Language

The key words "MUST", "MUST NOT", "REQUIRED", "SHALL", "SHALL NOT", "SHOULD", "SHOULD NOT", "RECOMMENDED", "MAY", and "OPTIONAL" in this document are to be interpreted as described in [RFC 2119](#) [[RFC2119](#)].

Status of This Memo

This Internet-Draft is submitted in full conformance with the provisions of [BCP 78](#) and [BCP 79](#).

Internet-Drafts are working documents of the Internet Engineering Task Force (IETF). Note that other groups may also distribute working documents as Internet-Drafts. The list of current Internet-Drafts is at <http://datatracker.ietf.org/drafts/current/>.

Internet-Drafts are draft documents valid for a maximum of six months and may be updated, replaced, or obsoleted by other documents at any time. It is inappropriate to use Internet-Drafts as reference material or to cite them other than as "work in progress."

This Internet-Draft will expire on October 29, 2015.

Copyright Notice

Copyright (c) 2015 IETF Trust and the persons identified as the document authors. All rights reserved.

This document is subject to [BCP 78](#) and the IETF Trust's Legal Provisions Relating to IETF Documents (<http://trustee.ietf.org/license-info>) in effect on the date of

publication of this document. Please review these documents carefully, as they describe your rights and restrictions with respect to this document. Code Components extracted from this document must include Simplified BSD License text as described in Section 4.e of the Trust Legal Provisions and are provided without warranty as described in the Simplified BSD License.

Table of Contents

- [1. Introduction . . . . .](#) [4](#)
- [1.1. The NFS Version 4 Minor Version 2 Protocol . . . . .](#) [4](#)
- [1.2. Scope of This Document . . . . .](#) [5](#)
- [1.3. NFSv4.2 Goals . . . . .](#) [5](#)
- [1.4. Overview of NFSv4.2 Features . . . . .](#) [5](#)
- [1.4.1. Server Side Copy . . . . .](#) [5](#)
- [1.4.2. Application I/O Advise . . . . .](#) [6](#)
- [1.4.3. Sparse Files . . . . .](#) [6](#)
- [1.4.4. Space Reservation . . . . .](#) [6](#)
- [1.4.5. Application Data Block \(ADB\) Support . . . . .](#) [6](#)
- [1.4.6. Labeled NFS . . . . .](#) [6](#)
- [1.5. Enhancements to Minor Versioning Model . . . . .](#) [7](#)
- [2. Minor Versioning . . . . .](#) [7](#)
- [3. pNFS considerations for New Operations . . . . .](#) [8](#)
- [3.1. Atomicity for ALLOCATE and DEALLOCATE . . . . .](#) [8](#)
- [3.2. Sharing of stateids with NFSv4.1 . . . . .](#) [8](#)
- [3.3. NFSv4.2 as a Storage Protocol in pNFS: the File Layout Type . . . . .](#) [8](#)
- [3.3.1. Operations Sent to NFSv4.2 Data Servers . . . . .](#) [8](#)
- [4. Server Side Copy . . . . .](#) [9](#)
- [4.1. Introduction . . . . .](#) [9](#)
- [4.2. Protocol Overview . . . . .](#) [9](#)
- [4.2.1. Copy Operations . . . . .](#) [10](#)
- [4.2.2. Requirements for Operations . . . . .](#) [10](#)
- [4.3. Requirements for Inter-Server Copy . . . . .](#) [11](#)
- [4.4. Implementation Considerations . . . . .](#) [11](#)
- [4.4.1. Locking the Files . . . . .](#) [11](#)
- [4.4.2. Client Caches . . . . .](#) [12](#)
- [4.5. Intra-Server Copy . . . . .](#) [12](#)
- [4.6. Inter-Server Copy . . . . .](#) [13](#)
- [4.7. Server-to-Server Copy Protocol . . . . .](#) [17](#)
- [4.7.1. Considerations on Selecting a Copy Protocol . . . . .](#) [17](#)
- [4.7.2. Using NFSv4.x as the Copy Protocol . . . . .](#) [17](#)
- [4.7.3. Using an Alternative Copy Protocol . . . . .](#) [17](#)
- [4.8. netloc4 - Network Locations . . . . .](#) [18](#)
- [4.9. Copy Offload Stateids . . . . .](#) [19](#)
- [4.10. Security Considerations . . . . .](#) [19](#)
- [4.10.1. Inter-Server Copy Security . . . . .](#) [20](#)
- [5. Support for Application IO Hints . . . . .](#) [27](#)

Haynes

Expires October 29, 2015

[Page 2]

- 6. Sparse Files . . . . . 27
  - 6.1. Introduction . . . . . 27
  - 6.2. Terminology . . . . . 28
  - 6.3. New Operations . . . . . 28
    - 6.3.1. READ\_PLUS . . . . . 28
    - 6.3.2. DEALLOCATE . . . . . 29
- 7. Space Reservation . . . . . 29
- 8. Application Data Block Support . . . . . 31
  - 8.1. Generic Framework . . . . . 32
    - 8.1.1. Data Block Representation . . . . . 32
  - 8.2. An Example of Detecting Corruption . . . . . 33
  - 8.3. Example of READ\_PLUS . . . . . 34
  - 8.4. An Example of Zeroing Space . . . . . 35
- 9. Labeled NFS . . . . . 35
  - 9.1. Introduction . . . . . 35
  - 9.2. Definitions . . . . . 36
  - 9.3. MAC Security Attribute . . . . . 37
    - 9.3.1. Delegations . . . . . 38
    - 9.3.2. Permission Checking . . . . . 38
    - 9.3.3. Object Creation . . . . . 38
    - 9.3.4. Existing Objects . . . . . 38
    - 9.3.5. Label Changes . . . . . 39
  - 9.4. pNFS Considerations . . . . . 39
  - 9.5. Discovery of Server Labeled NFS Support . . . . . 39
  - 9.6. MAC Security NFS Modes of Operation . . . . . 40
    - 9.6.1. Full Mode . . . . . 40
    - 9.6.2. Guest Mode . . . . . 41
  - 9.7. Security Considerations for Labeled NFS . . . . . 42
- 10. Sharing change attribute implementation characteristics with NFSv4 clients . . . . . 42
- 11. Error Values . . . . . 43
  - 11.1. Error Definitions . . . . . 43
    - 11.1.1. General Errors . . . . . 43
    - 11.1.2. Server to Server Copy Errors . . . . . 43
    - 11.1.3. Labeled NFS Errors . . . . . 44
  - 11.2. New Operations and Their Valid Errors . . . . . 44
  - 11.3. New Callback Operations and Their Valid Errors . . . . . 48
- 12. New File Attributes . . . . . 49
  - 12.1. New RECOMMENDED Attributes - List and Definition References . . . . . 49
  - 12.2. Attribute Definitions . . . . . 50
- 13. Operations: REQUIRED, RECOMMENDED, or OPTIONAL . . . . . 52
- 14. Modifications to NFSv4.1 Operations . . . . . 56
  - 14.1. Operation 42: EXCHANGE\_ID - Instantiate Client ID . . . . . 56
  - 14.2. Operation 48: GETDEVICELIST - Get All Device Mappings for a File System . . . . . 57
- 15. NFSv4.2 Operations . . . . . 59
  - 15.1. Operation 59: ALLOCATE - Reserve Space in A Region of a

Haynes

Expires October 29, 2015

[Page 3]

|  |                    |
|--|--------------------|
| File . . . . .   | <a href="#">59</a> |
| <a href="#">15.2.</a> Operation 60: COPY - Initiate a server-side copy . . . .           | <a href="#">60</a> |
| 15.3. Operation 61: COPY_NOTIFY - Notify a source server of a future copy . . . . .      | <a href="#">64</a> |
| 15.4. Operation 62: DEALLOCATE - Unreserve Space in a Region of a File . . . . .         | <a href="#">66</a> |
| 15.5. Operation 63: IO_ADVISE - Application I/O access pattern hints . . . . .           | <a href="#">67</a> |
| 15.6. Operation 64: LAYOUTERROR - Provide Errors for the Layout . . . . .                | <a href="#">73</a> |
| 15.7. Operation 65: LAYOUTSTATS - Provide Statistics for the Layout . . . . .            | <a href="#">76</a> |
| 15.8. Operation 66: OFFLOAD_CANCEL - Stop an Offloaded Operation . . . . .               | <a href="#">78</a> |
| 15.9. Operation 67: OFFLOAD_STATUS - Poll for Status of Asynchronous Operation . . . . . | <a href="#">79</a> |
| 15.10. Operation 68: READ_PLUS - READ Data or Holes from a File                          | 80                 |
| <a href="#">15.11.</a> Operation 69: SEEK - Find the Next Data or Hole . . . .           | <a href="#">85</a> |
| 15.12. Operation 70: WRITE_SAME - WRITE an ADB Multiple Times to a File . . . . .        | <a href="#">86</a> |
| 15.13. Operation 71: CLONE - Clone a range of file into another file . . . . .           | <a href="#">90</a> |
| <a href="#">16.</a> NFSv4.2 Callback Operations . . . . .                                | <a href="#">91</a> |
| 16.1. Operation 15: CB_OFFLOAD - Report results of an asynchronous operation . . . . .   | <a href="#">92</a> |
| <a href="#">17.</a> Security Considerations . . . . .                                    | <a href="#">93</a> |
| <a href="#">18.</a> IANA Considerations . . . . .  | <a href="#">93</a> |
| <a href="#">19.</a> References . . . . .   | <a href="#">93</a> |
| 19.1. Normative References . . . . .   | <a href="#">93</a> |
| 19.2. Informative References . . . . .   | <a href="#">94</a> |
| <a href="#">Appendix A.</a> Acknowledgments . . . . .                                    | <a href="#">96</a> |
| <a href="#">Appendix B.</a> RFC Editor Notes . . . . .                                   | <a href="#">97</a> |
| Author's Address . . . . .   | <a href="#">97</a> |

## [1.](#) Introduction

### [1.1.](#) The NFS Version 4 Minor Version 2 Protocol

The NFS version 4 minor version 2 (NFSv4.2) protocol is the third minor version of the NFS version 4 (NFSv4) protocol. The first minor version, NFSv4.0, is described in [[RFC7530](#)] and the second minor version, NFSv4.1, is described in [[RFC5661](#)].

As a minor version, NFSv4.2 is consistent with the overall goals for NFSv4, but extends the protocol so as to better meet those goals, based on experiences with NFSv4.1. In addition, NFSv4.2 has adopted some additional goals, which motivate some of the major extensions in NFSv4.2.

Haynes

Expires October 29, 2015

[Page 4]

## **1.2. Scope of This Document**

This document describes the NFSv4.2 protocol. With respect to NFSv4.0 and NFSv4.1, this document does not:

- o describe the NFSv4.0 or NFSv4.1 protocols, except where needed to contrast with NFSv4.2
- o modify the specification of the NFSv4.0 or NFSv4.1 protocols
- o clarify the NFSv4.0 or NFSv4.1 protocols. I.e., any clarifications made here apply to NFSv4.2 and neither of the prior protocols

The full External Data Representation (XDR) [[RFC4506](#)] for NFSv4.2 is presented in [[NFSv42xdr](#)].

## **1.3. NFSv4.2 Goals**

A major goal of the design of NFSv4.2 is to take common local file system features and offer them remotely. These features might

- o already be available on the servers, e.g., sparse files
- o be under development as a new standard, e.g., SEEK pulls in both SEEK\_HOLE and SEEK\_DATA
- o be used by clients with the servers via some proprietary means, e.g., Labeled NFS

NFSv4.2 provides means for clients to leverage these features on the server in cases in which that had previously not been possible within the confines of the NFS protocol.

## **1.4. Overview of NFSv4.2 Features**

### **1.4.1. Server Side Copy**

A traditional file copy of a remotely accessed, whether from one server to another or between location in the same server, results in the data being put on the network twice - source to client and then client to destination. New operations are introduced to allow unnecessary traffic to be eliminated:

The intra-server copy feature allows the client to request the server to perform the copy internally, avoiding unnecessary network traffic.





The inter-server copy feature allows the client to authorize the source and destination servers to interact directly.

As such copies can be lengthy, asynchronous support is also provided.

#### **1.4.2. Application I/O Advise**

Applications and clients want to advise the server as to expected I/O behavior. Using `IO_ADVISE` (see [Section 15.5](#)) to communicate future I/O behavior such as whether a file will be accessed sequentially or randomly, and whether a file will or will not be accessed in the near future, allows servers to optimize future I/O requests for a file by, for example, prefetching or evicting data. This operation can be used to support the `posix_fadvise` function. In addition, it may be helpful to applications such as databases and video editors.

#### **1.4.3. Sparse Files**

Sparse files are ones which have unallocated or uninitialized data blocks as holes in the file. Such holes are typically transferred as 0s during I/O. `READ_PLUS` (see [Section 15.10](#)) allows a server to send back to the client metadata describing the hole and `DEALLOCATE` (see [Section 15.4](#)) allows the client to punch holes into a file. In addition, `SEEK` (see [Section 15.11](#)) is provided to scan for the next hole or data from a given location.

#### **1.4.4. Space Reservation**

When a file is sparse, one concern applications have is ensuring that there will always be enough data blocks available for the file during future writes. `ALLOCATE` (see [Section 15.1](#)) allows a client to request a guarantee that space will be available. Also `DEALLOCATE` (see [Section 15.4](#)) allows the client to punch a hole into a file, thus releasing a space reservation.

#### **1.4.5. Application Data Block (ADB) Support**

Some applications treat a file as if it were a disk and as such want to initialize (or format) the file image. We introduce `WRITE_SAME` (see [Section 15.12](#)) to send this metadata to the server to allow it to write the block contents.

#### **1.4.6. Labeled NFS**

While both clients and servers can employ Mandatory Access Control (MAC) security models to enforce data access, there has been no protocol support for interoperability. A new file object attribute, `sec_label` (see [Section 12.2.4](#)) allows for the server to store MAC



labels on files, which the client retrieves and uses to enforce data access (see [Section 9.6.2](#)). The format of the `sec_label` accommodates any MAC security system.

### **1.5. Enhancements to Minor Versioning Model**

In NFSv4.1, the only way to introduce new variants of an operation was to introduce a new operation. I.e., `READ` becomes either `READ2` or `READ_PLUS`. With the use of discriminated unions as parameters to such functions in NFSv4.2, it is possible to add a new arm in a subsequent minor version. And it is also possible to move such an operation from `OPTIONAL/RECOMMENDED` to `REQUIRED`. Forcing an implementation to adopt each arm of a discriminated union at such a time does not meet the spirit of the minor versioning rules. As such, new arms of a discriminated union **MUST** follow the same guidelines for minor versioning as operations in NFSv4.1 - i.e., they may not be made `REQUIRED`. To support this, a new error code, `NFS4ERR_UNION_NOTSUPP`, allows the server to communicate to the client that the operation is supported, but the specific arm of the discriminated union is not.

## **2. Minor Versioning**

NFSv4.2 is a minor version of NFSv4 and is built upon NFSv4.1 as documented in [[RFC5661](#)] and [[RFC5662](#)].

NFSv4.2 does not modify the rules applicable to the NFSv4 versioning process and follows the rules set out in [[RFC5661](#)] or in standard-track documents updating that document (e.g., in an RFC based on [[NFSv4-Versioning](#)]).

NFSv4.2 only defines extensions to NFSv4.1, each of which may be supported (or not) independently. It does not

- o introduce infrastructural features
- o make existing features `MANDATORY` to `NOT` implement
- o change the status of existing features (i.e., by changing their status among `OPTIONAL`, `RECOMMENDED`, `REQUIRED`).

The following versioning-related considerations should be noted.

- o When a new case is added to an existing switch, servers need to report non-support of that new case by returning `NFS4ERR_UNION_NOTSUPP`.



- o As regards the potential cross-minor-version transfer of stateids, pNFS implementations of the file mapping type may support of use of an NFSv4.2 metadata sever with NFSv4.1 data servers. In this context, a stateid returned by an NFSv4.2 COMPOUND will be used in an NFSv4.1 COMPOUND directed to the data server (see Sections [3.2](#) and [3.3](#)).

### **3. pNFS considerations for New Operations**

#### **3.1. Atomicity for ALLOCATE and DEALLOCATE**

Both ALLOCATE (see [Section 15.1](#)) and DEALLOCATE (see [Section 15.4](#)) are sent to the metadata server, which is responsible for coordinating the changes onto the storage devices. In particular, both operations must either fully succeed or fail, it cannot be the case that one storage device succeeds whilst another fails.

#### **3.2. Sharing of stateids with NFSv4.1**

A NFSv4.2 metadata server can hand out a layout to a NFSv4.1 storage device. [Section 13.9.1 of \[RFC5661\]](#) discusses how the client gets a stateid from the metadata server to present to a storage device.

#### **3.3. NFSv4.2 as a Storage Protocol in pNFS: the File Layout Type**

A file layout provided by a NFSv4.2 server may refer either to a storage device that only implements NFSv4.1 as specified in [\[RFC5661\]](#), or to a storage device that implements additions from NFSv4.2, in which case the rules in [Section 3.3.1](#) apply. As the File Layout Type does not provide a means for informing the client as to which minor version a particular storage device is providing, it will have to negotiate this via the normal RPC semantics of major and minor version discovery.

##### **3.3.1. Operations Sent to NFSv4.2 Data Servers**

In addition to the commands listed in [\[RFC5661\]](#), NFSv4.2 data servers MAY accept a COMPOUND containing the following additional operations: IO\_ADVISE (see [Section 15.5](#)), READ\_PLUS (see [Section 15.10](#)), WRITE\_SAME (see [Section 15.12](#)), and SEEK (see [Section 15.11](#)), which will be treated like the subset specified as "Operations Sent to NFSv4.1 Data Servers" in [Section 13.6 of \[RFC5661\]](#).

Additional details on the implementation of these operations in a pNFS context are documented in the operation specific sections.



## **4. Server Side Copy**

### **4.1. Introduction**

The server-side copy feature provides a mechanism for the NFS client to perform a file copy on a server or between two servers without the data being transmitted back and forth over the network through the NFS client. Without this feature, an NFS client copies data from one location to another by reading the data from the source server over the network, and then writing the data back over the network to the destination server.

If the source object and destination object are on different file servers, the file servers will communicate with one another to perform the copy operation. The server-to-server protocol by which this is accomplished is not defined in this document.

### **4.2. Protocol Overview**

The server-side copy offload operations support both intra-server and inter-server file copies. An intra-server copy is a copy in which the source file and destination file reside on the same server. In an inter-server copy, the source file and destination file are on different servers. In both cases, the copy may be performed synchronously or asynchronously.

Throughout the rest of this document, we refer to the NFS server containing the source file as the "source server" and the NFS server to which the file is transferred as the "destination server". In the case of an intra-server copy, the source server and destination server are the same server. Therefore in the context of an intra-server copy, the terms source server and destination server refer to the single server performing the copy.

The new operations are designed to copy files. Other file system objects can be copied by building on these operations or using other techniques. For example, if the user wishes to copy a directory, the client can synthesize a directory copy by first creating the destination directory and then copying the source directory's files to the new destination directory.

For the inter-server copy, the operations are defined to be compatible with the traditional copy authentication approach. The client and user are authorized at the source for reading. Then they are authorized at the destination for writing.





#### **4.2.1. Copy Operations**

`COPY_NOTIFY`: Used by the client to notify the source server of a future file copy from a given destination server for the given user. ([Section 15.3](#))

`COPY`: Used by the client to request a file copy. ([Section 15.2](#))

`OFFLOAD_CANCEL`: Used by the client to terminate an asynchronous file copy. ([Section 15.8](#))

`OFFLOAD_STATUS`: Used by the client to poll the status of an asynchronous file copy. ([Section 15.9](#))

`CB_OFFLOAD`: Used by the destination server to report the results of an asynchronous file copy to the client. ([Section 16.1](#))

#### **4.2.2. Requirements for Operations**

The implementation of server-side copy is OPTIONAL by the client and the server. However, in order to successfully copy a file, some operations MUST be supported by the client and/or server.

If a client desires an intra-server file copy, then it MUST support the `COPY` and `CB_OFFLOAD` operations. If `COPY` returns a stateid, then the client MAY use the `OFFLOAD_CANCEL` and `OFFLOAD_STATUS` operations.

If a client desires an inter-server file copy, then it MUST support the `COPY`, `COPY_NOTIFY`, and `CB_OFFLOAD` operations, and MAY use the `OFFLOAD_CANCEL` operation. If `COPY` returns a stateid, then the client MAY use the `OFFLOAD_CANCEL` and `OFFLOAD_STATUS` operations.

If a server supports intra-server copy, then the server MUST support the `COPY` operation. If a server's `COPY` operation returns a stateid, then the server MUST also support these operations: `CB_OFFLOAD`, `OFFLOAD_CANCEL`, and `OFFLOAD_STATUS`.

If a source server supports inter-server copy, then the source server MUST support all these operations: `COPY_NOTIFY` and `OFFLOAD_CANCEL`.

If a destination server supports inter-server copy, then the destination server MUST support the `COPY` operation. If a destination server's `COPY` operation returns a stateid, then the destination server MUST also support these operations: `CB_OFFLOAD`, `OFFLOAD_CANCEL`, `COPY_NOTIFY`, and `OFFLOAD_STATUS`.

Each operation is performed in the context of the user identified by the ONC RPC credential of its containing `COMPOUND` or `CB_COMPOUND` request. For example, an `OFFLOAD_CANCEL` operation issued by a given



user indicates that a specified COPY operation initiated by the same user be canceled. Therefore an OFFLOAD\_CANCEL MUST NOT interfere with a copy of the same file initiated by another user.

An NFS server MAY allow an administrative user to monitor or cancel copy operations using an implementation specific interface.

### **4.3. Requirements for Inter-Server Copy**

Inter-server copy is driven by several requirements:

- o The specification MUST NOT mandate the server-to-server protocol.
- o The specification MUST provide guidance for using NFSv4.x as a copy protocol. For those source and destination servers willing to use NFSv4.x, there are specific security considerations that this specification MUST address.
- o The specification MUST NOT mandate preconfiguration between the source and destination server. Requiring that the source and destination first have a "copying relationship" increases the administrative burden. However the specification MUST NOT preclude implementations that require preconfiguration.
- o The specification MUST NOT mandate a trust relationship between the source and destination server. The NFSv4 security model requires mutual authentication between a principal on an NFS client and a principal on an NFS server. This model MUST continue with the introduction of COPY.

### **4.4. Implementation Considerations**

#### **4.4.1. Locking the Files**

Both the source and destination file may need to be locked to protect the content during the copy operations. A client can achieve this by a combination of OPEN and LOCK operations. I.e., either share or byte range locks might be desired.

Note that when the client establishes a lock stateid on the source, the context of that stateid is for the client and not the destination. As such, there might already be an outstanding stateid, issued to the destination as client of the source, with the same value as that provided for the lock stateid. The source MUST equate the lock stateid as that of the client, i.e., when the destination presents it in the context of a inter-server copy, it is on behalf of the client.



4.4.2. Client Caches

In a traditional copy, if the client is in the process of writing to the file before the copy (and perhaps with a write delegation), it will be straightforward to update the destination server. With an inter-server copy, the source has no insight into the changes cached on the client. The client SHOULD write back the data to the source. If it does not do so, it is possible that the destination will receive a corrupt copy of file.

4.5. Intra-Server Copy

To copy a file on a single server, the client uses a COPY operation. The server may respond to the copy operation with the final results of the copy or it may perform the copy asynchronously and deliver the results using a CB\_OFFLOAD operation callback. If the copy is performed asynchronously, the client may poll the status of the copy using OFFLOAD\_STATUS or cancel the copy using OFFLOAD\_CANCEL.

A synchronous intra-server copy is shown in Figure 1. In this example, the NFS server chooses to perform the copy synchronously. The copy operation is completed, either successfully or unsuccessfully, before the server replies to the client's request. The server's reply contains the final result of the operation.

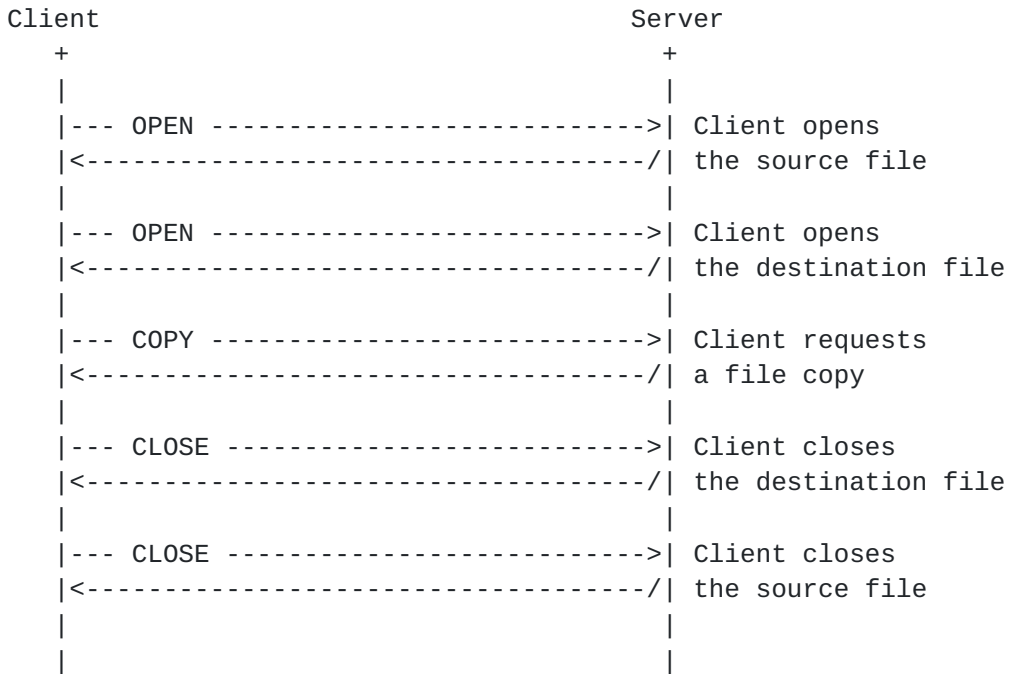


Figure 1: A synchronous intra-server copy.



An asynchronous intra-server copy is shown in Figure 2. In this example, the NFS server performs the copy asynchronously. The server's reply to the copy request indicates that the copy operation was initiated and the final result will be delivered at a later time. The server's reply also contains a copy stateid. The client may use this copy stateid to poll for status information (as shown) or to cancel the copy using an OFFLOAD\_CANCEL. When the server completes the copy, the server performs a callback to the client and reports the results.

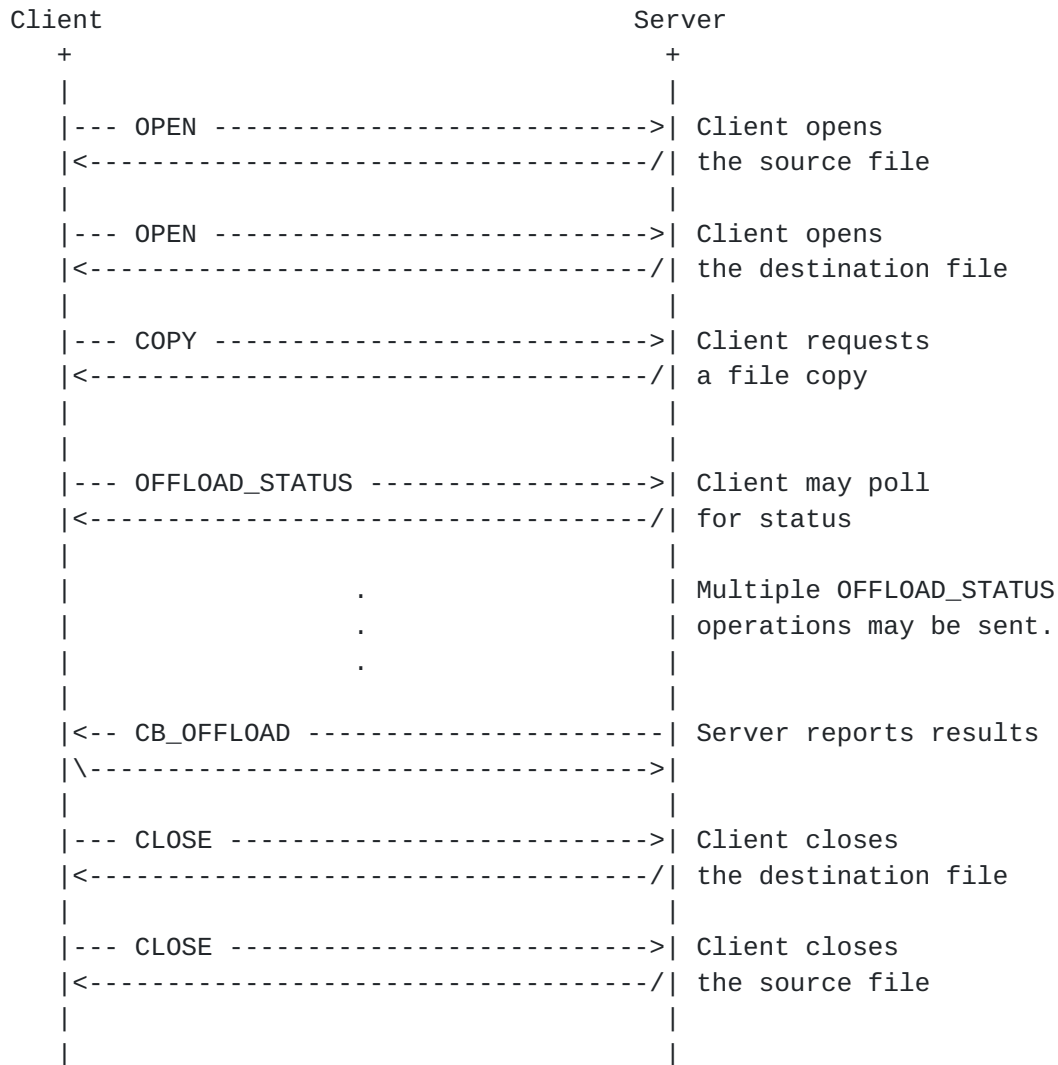


Figure 2: An asynchronous intra-server copy.

**4.6. Inter-Server Copy**

A copy may also be performed between two servers. The copy protocol is designed to accommodate a variety of network topologies. As shown in Figure 3, the client and servers may be connected by multiple





networks. In particular, the servers may be connected by a specialized, high speed network (network 192.0.2.0/24 in the diagram) that does not include the client. The protocol allows the client to setup the copy between the servers (over network 203.0.113.0/24 in the diagram) and for the servers to communicate on the high speed network if they choose to do so.

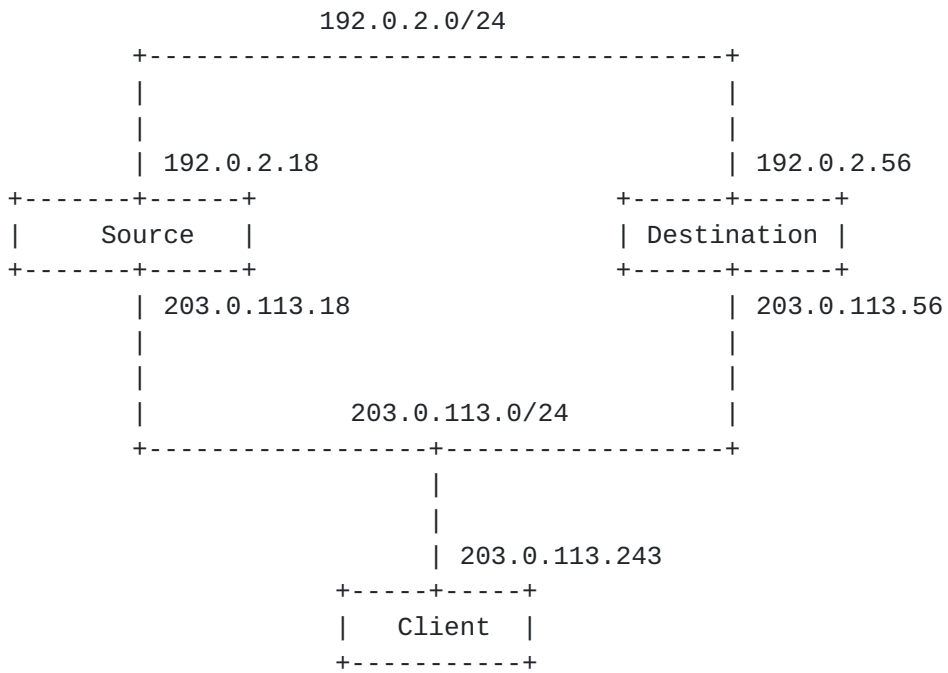


Figure 3: An example inter-server network topology.

For an inter-server copy, the client notifies the source server that a file will be copied by the destination server using a COPY\_NOTIFY operation. The client then initiates the copy by sending the COPY operation to the destination server. The destination server may perform the copy synchronously or asynchronously.

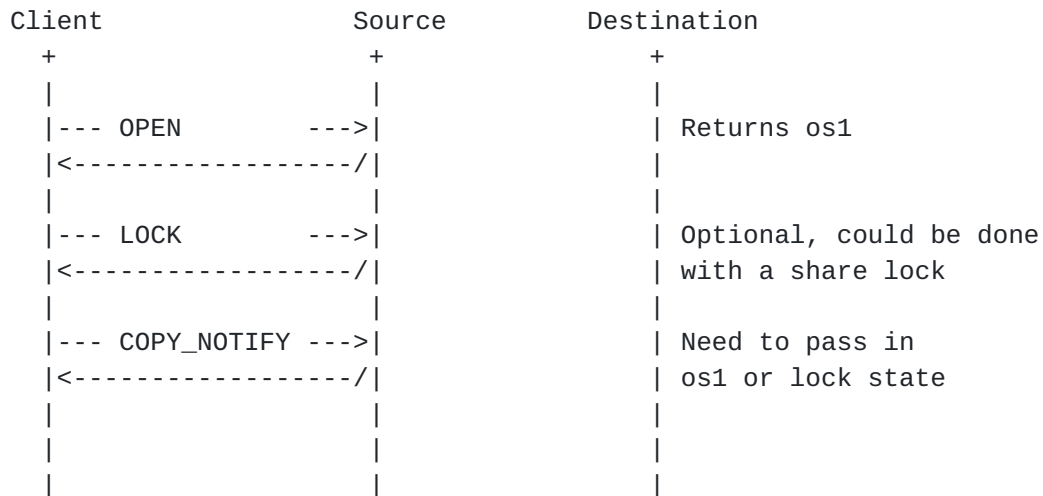
A synchronous inter-server copy is shown in Figure 4. In this case, the destination server chooses to perform the copy before responding to the client's COPY request.

An asynchronous copy is shown in Figure 5. In this case, the destination server chooses to respond to the client's COPY request immediately and then perform the copy asynchronously.





Figure 4: A synchronous inter-server copy.





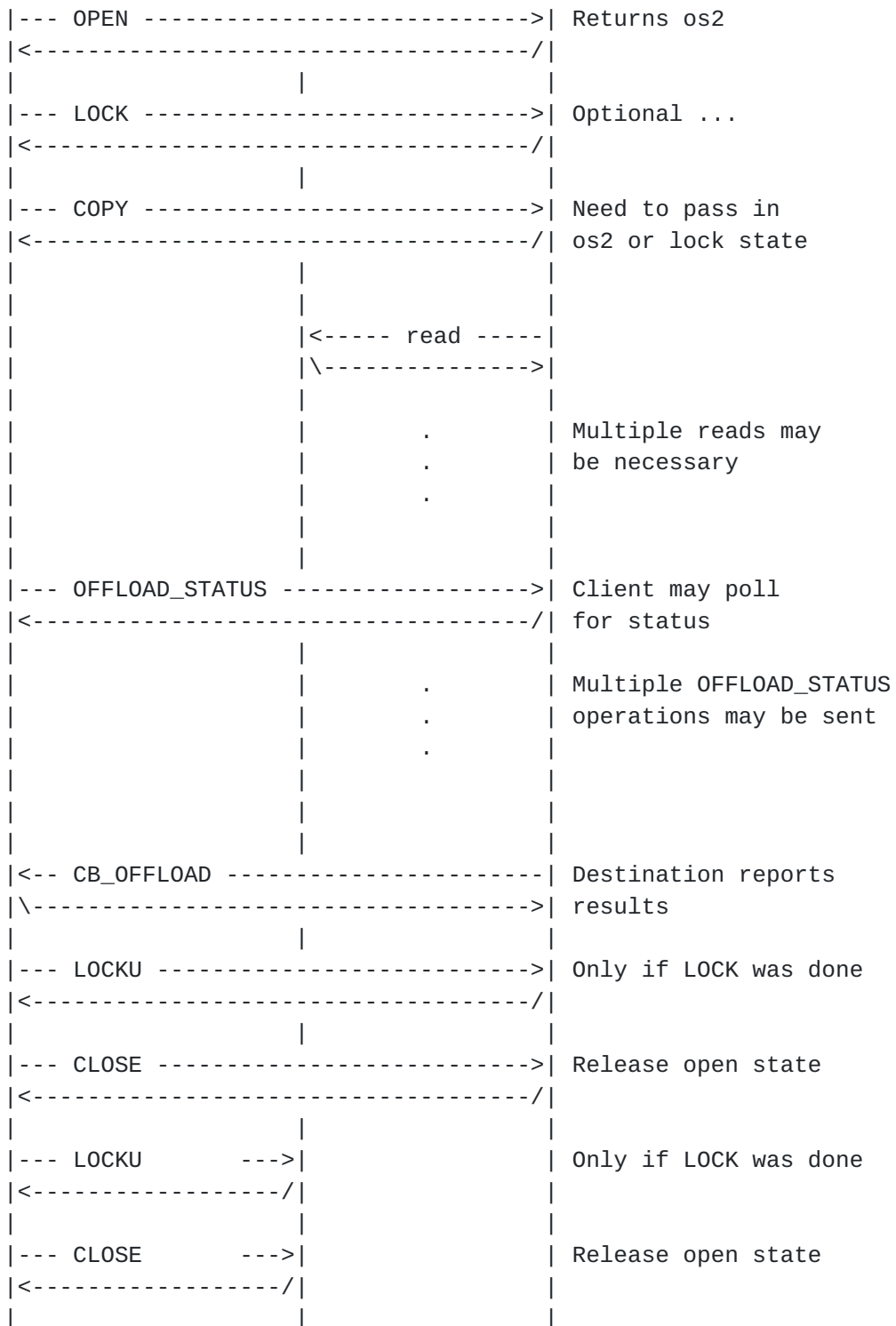


Figure 5: An asynchronous inter-server copy.



## **[4.7.](#) Server-to-Server Copy Protocol**

The choice of what protocol to use in an inter-server copy is ultimately the destination server's decision. However, the destination server has to be cognizant that it is working on behalf of the client.

### **[4.7.1.](#) Considerations on Selecting a Copy Protocol**

The client can have requirements over both the size of transactions and error recovery semantics. It may want to split the copy up such that each chunk is synchronously transferred. It may want the copy protocol to copy the bytes in consecutive order such that upon an error, the client can restart the copy at the last known good offset. If the destination server cannot meet these requirements, the client may prefer the traditional copy mechanism such that it can meet those requirements.

### **[4.7.2.](#) Using NFSv4.x as the Copy Protocol**

The destination server MAY use standard NFSv4.x (where  $x \geq 1$ ) operations to read the data from the source server. If NFSv4.x is used for the server-to-server copy protocol, the destination server can use the source filehandle and `ca_src_stateid` provided in the COPY request with standard NFSv4.x operations to read data from the source server. Note that the `ca_src_stateid` MUST be the `cnr_stateid` returned from the source via the COPY\_NOTIFY.

### **[4.7.3.](#) Using an Alternative Copy Protocol**

In a homogeneous environment, the source and destination servers might be able to perform the file copy extremely efficiently using specialized protocols. For example the source and destination servers might be two nodes sharing a common file system format for the source and destination file systems. Thus the source and destination are in an ideal position to efficiently render the image of the source file to the destination file by replicating the file system formats at the block level. Another possibility is that the source and destination might be two nodes sharing a common storage area network, and thus there is no need to copy any data at all, and instead ownership of the file and its contents might simply be re-assigned to the destination. To allow for these possibilities, the destination server is allowed to use a server-to-server copy protocol of its choice.

In a heterogeneous environment, using a protocol other than NFSv4.x (e.g., HTTP [[RFC2616](#)] or FTP [[RFC959](#)]) presents some challenges. In





particular, the destination server is presented with the challenge of accessing the source file given only an NFSv4.x filehandle.

One option for protocols that identify source files with path names is to use an ASCII hexadecimal representation of the source filehandle as the file name.

Another option for the source server is to use URLs to direct the destination server to a specialized service. For example, the response to COPY\_NOTIFY could include the URL ftp://s1.example.com:9999/\_FH/0x12345, where 0x12345 is the ASCII hexadecimal representation of the source filehandle. When the destination server receives the source server's URL, it would use "\_FH/0x12345" as the file name to pass to the FTP server listening on port 9999 of s1.example.com. On port 9999 there would be a special instance of the FTP service that understands how to convert NFS filehandles to an open file descriptor (in many operating systems, this would require a new system call, one which is the inverse of the makefh() function that the pre-NFSv4 MOUNT service needs).

Authenticating and identifying the destination server to the source server is also a challenge. Recommendations for how to accomplish this are given in [Section 4.10.1.3](#).

#### **4.8. netloc4 - Network Locations**

The server-side copy operations specify network locations using the netloc4 data type shown below:

<CODE BEGINS>

```
enum netloc_type4 {
    NL4_NAME      = 1,
    NL4_URL       = 2,
    NL4_NETADDR   = 3
};
union netloc4 switch (netloc_type4 nl_type) {
    case NL4_NAME:      utf8str_cis nl_name;
    case NL4_URL:       utf8str_cis nl_url;
    case NL4_NETADDR:   netaddr4    nl_addr;
};
```

<CODE ENDS>

If the netloc4 is of type NL4\_NAME, the nl\_name field MUST be specified as a UTF-8 string. The nl\_name is expected to be resolved to a network address via DNS, LDAP, NIS, /etc/hosts, or some other means. If the netloc4 is of type NL4\_URL, a server URL [[RFC3986](#)]



appropriate for the server-to-server copy operation is specified as a UTF-8 string. If the netloc4 is of type NL4\_NETADDR, the nl\_addr field MUST contain a valid netaddr4 as defined in [Section 3.3.9 of \[RFC5661\]](#).

When netloc4 values are used for an inter-server copy as shown in Figure 3, their values may be evaluated on the source server, destination server, and client. The network environment in which these systems operate should be configured so that the netloc4 values are interpreted as intended on each system.

#### **4.9. Copy Offload Stateids**

A server may perform a copy offload operation asynchronously. An asynchronous copy is tracked using a copy offload stateid. Copy offload stateids are included in the COPY, OFFLOAD\_CANCEL, OFFLOAD\_STATUS, and CB\_OFFLOAD operations.

A copy offload stateid will be valid until either (A) the client or server restarts or (B) the client returns the resource by issuing a OFFLOAD\_CANCEL operation or the client replies to a CB\_OFFLOAD operation.

A copy offload stateid's seqid MUST NOT be 0. In the context of a copy offload operation, it is ambiguous to indicate the most recent copy offload operation using a stateid with seqid of 0. Therefore a copy offload stateid with seqid of 0 MUST be considered invalid.

#### **4.10. Security Considerations**

The security considerations pertaining to NFSv4.1 [\[RFC5661\]](#) apply to this section. And as such, the standard security mechanisms used by the protocol can be used to secure the server-to-server operations.

NFSv4 clients and servers supporting the inter-server copy operations described in this chapter are REQUIRED to implement the mechanism described in [Section 4.10.1.1](#), and to support rejecting COPY\_NOTIFY requests that do not use RPCSEC\_GSS with privacy. If the server-to-server copy protocol is ONC RPC based, the servers are also REQUIRED to implement [\[rpcsec\\_gssv3\]](#) including the RPCSEC\_GSSv3 copy\_to\_auth, copy\_from\_auth, and copy\_confirm\_auth structured privileges. This requirement to implement is not a requirement to use; for example, a server may depending on configuration also allow COPY\_NOTIFY requests that use only AUTH\_SYS.



#### **4.10.1. Inter-Server Copy Security**

##### **4.10.1.1. Inter-Server Copy via ONC RPC with RPCSEC\_GSSv3**

When the client sends a COPY\_NOTIFY to the source server to expect the destination to attempt to copy data from the source server, it is expected that this copy is being done on behalf of the principal (called the "user principal") that sent the RPC request that encloses the COMPOUND procedure that contains the COPY\_NOTIFY operation. The user principal is identified by the RPC credentials. A mechanism that allows the user principal to authorize the destination server to perform the copy, that lets the source server properly authenticate the destination's copy, and does not allow the destination server to exceed this authorization, is necessary.

An approach that sends delegated credentials of the client's user principal to the destination server is not used for the following reason. If the client's user delegated its credentials, the destination would authenticate as the user principal. If the destination were using the NFSv4 protocol to perform the copy, then the source server would authenticate the destination server as the user principal, and the file copy would securely proceed. However, this approach would allow the destination server to copy other files. The user principal would have to trust the destination server to not do so. This is counter to the requirements, and therefore is not considered.

Instead, a feature of the RPCSEC\_GSSv3 [[rpcsec\\_gssv3](#)] protocol can be used: RPC application defined structured privilege assertion. This features allow the destination server to authenticate to the source server as acting on behalf of the user principal, and to authorize the destination server to perform READs of the file to be copied from the source on behalf of the user principal. Once the copy is complete, the client can destroy the RPCSEC\_GSSv3 handles to end the authorization of both the source and destination servers to copy.

We define three RPCSEC\_GSSv3 structured privilege assertions that work in tandem to authorize the copy:

copy\_from\_auth: A user principal is authorizing a source principal ("nfs@<source>") to allow a destination principal ("nfs@<destination>") to setup the copy\_confirm\_auth privilege required to copy a file from the source to the destination on behalf of the user principal. This privilege is established on the source server before the user principal sends a COPY\_NOTIFY operation to the source server, and the resultant RPCSEC\_GSSv3 context is used to secure the COPY\_NOTIFY operation.



<CODE BEGINS>

```
struct copy_from_auth_priv {
    secret4          cfap_shared_secret;
    netloc4          cfap_destination;
    /* the NFSv4 user name that the user principal maps to */
    utf8str_mixed    cfap_username;
};
```

<CODE ENDS>

cfp\_shared\_secret is an automatically generated random number secret value.

copy\_to\_auth: A user principal is authorizing a destination principal ("nfs@<destination>") to setup a copy\_confirm\_auth privilege with a source principal ("nfs@<source>") to allow it to copy a file from the source to the destination on behalf of the user principal. This privilege is established on the destination server before the user principal sends a COPY operation to the destination server, and the resultant RPCSEC\_GSSv3 context is used to secure the COPY operation.

<CODE BEGINS>

```
struct copy_to_auth_priv {
    /* equal to cfap_shared_secret */
    secret4          ctap_shared_secret;
    netloc4          ctap_source<>;
    /* the NFSv4 user name that the user principal maps to */
    utf8str_mixed    ctap_username;
};
```

<CODE ENDS>

ctap\_shared\_secret is the automatically generated secret value used to establish the copy\_from\_auth privilege with the source principal. See [Section 4.10.1.1.1](#).

copy\_confirm\_auth: A destination principal ("nfs@<destination>") is confirming with the source principal ("nfs@<source>") that it is authorized to copy data from the source. This privilege is established on the destination server before the file is copied from the source to the destination. The resultant RPCSEC\_GSSv3 context is used to secure the READ operations from the source to the destination server.

<CODE BEGINS>





```
struct copy_confirm_auth_priv {
    /* equal to GSS_GetMIC() of cfap_shared_secret */
    opaque          ccap_shared_secret_mic<>;
    /* the NFSv4 user name that the user principal maps to */
    utf8str_mixed   ccap_username;
};
```

<CODE ENDS>

#### **4.10.1.1.1. Establishing a Security Context**

When the user principal wants to COPY a file between two servers, if it has not established copy\_from\_auth and copy\_to\_auth privileges on the servers, it establishes them:

- o As noted in [[rpcsec\\_gssv3](#)] the client uses an existing RPCSEC\_GSSv3 context termed the "parent" handle to establish and protect RPCSEC\_GSSv3 structured privilege assertion exchanges. The copy\_from\_auth privilege will use the context established between the user principal and the source server used to OPEN the source file as the RPCSEC\_GSSv3 parent handle. The copy\_to\_auth privilege will use the context established between the user principal and the destination server used to OPEN the destination file as the RPCSEC\_GSSv3 parent handle.
- o A random number is generated to use as a secret to be shared between the two servers. This shared secret will be placed in the cfap\_shared\_secret and ctap\_shared\_secret fields of the appropriate privilege data types, copy\_from\_auth\_priv and copy\_to\_auth\_priv. Because of this shared\_secret the RPCSEC\_GSS3\_CREATE control messages for copy\_from\_auth and copy\_to\_auth MUST use a QOP of rpc\_gss\_svc\_privacy.
- o An instance of copy\_from\_auth\_priv is filled in with the shared secret, the destination server, and the NFSv4 user id of the user principal and is placed in rpc\_gss3\_create\_args assertions[0].privs.privilege. The string "copy\_from\_auth" is placed in assertions[0].privs.name. The source server unwraps the rpc\_gss\_svc\_privacy RPCSEC\_GSS3\_CREATE payload and verifies that the NFSv4 user id being asserted matches the source server's mapping of the user principal. If it does, the privilege is established on the source server as: <"copy\_from\_auth", user id, destination>. The field "handle" in a successful reply is the RPCSEC\_GSSv3 copy\_from\_auth "child" handle that the client will use on COPY\_NOTIFY requests to the source server.
- o An instance of copy\_to\_auth\_priv is filled in with the shared secret, the cnr\_source\_server list returned by COPY\_NOTIFY, and



the NFSv4 user id of the user principal. The `copy_to_auth_priv` instance is placed in `rpc_gss3_create_args` `assertions[0].privs.privilege`. The string `"copy_to_auth"` is placed in `assertions[0].privs.name`. The destination server unwraps the `rpc_gss_svc_privacy` `RPCSEC_GSS3_CREATE` payload and verifies that the NFSv4 user id being asserted matches the destination server's mapping of the user principal. If it does, the privilege is established on the destination server as: `<"copy_to_auth", user id, source list>`. The field `"handle"` in a successful reply is the `RPCSEC_GSSv3` `copy_to_auth` `"child"` handle that the client will use on `COPY` requests to the destination server involving the source server.

As noted in [[rpcsec\\_gssv3](#)] [Section 2.3.1](#) "Create Request", both the client and the source server should associate the `RPCSEC_GSSv3` `"child"` handle with the parent `RPCSEC_GSSv3` handle used to create the `RPCSEC_GSSv3` child handle.

#### **4.10.1.1.2. Starting a Secure Inter-Server Copy**

When the client sends a `COPY_NOTIFY` request to the source server, it uses the privileged `"copy_from_auth"` `RPCSEC_GSSv3` handle. `cna_destination_server` in `COPY_NOTIFY` MUST be the same as `cfap_destination` specified in `copy_from_auth_priv`. Otherwise, `COPY_NOTIFY` will fail with `NFS4ERR_ACCESS`. The source server verifies that the privilege `<"copy_from_auth", user id, destination>` exists, and annotates it with the source filehandle, if the user principal has read access to the source file, and if administrative policies give the user principal and the NFS client read access to the source file (i.e., if the `ACCESS` operation would grant read access). Otherwise, `COPY_NOTIFY` will fail with `NFS4ERR_ACCESS`.

When the client sends a `COPY` request to the destination server, it uses the privileged `"copy_to_auth"` `RPCSEC_GSSv3` handle. `ca_source_server` list in `COPY` MUST be the same as `ctap_source` list specified in `copy_to_auth_priv`. Otherwise, `COPY` will fail with `NFS4ERR_ACCESS`. The destination server verifies that the privilege `<"copy_to_auth", user id, source list>` exists, and annotates it with the source and destination filehandles. If the `COPY` returns a `wr_callback_id`, then this is an asynchronous copy and the `wr_callback_id` must also be annotated to the `copy_to_auth` privilege. If the client has failed to establish the `"copy_to_auth"` privilege it will reject the request with `NFS4ERR_PARTNER_NO_AUTH`.

If either the `COPY_NOTIFY`, or the `COPY` operations fail, the associated `"copy_from_auth"` and `"copy_to_auth"` `RPCSEC_GSSv3` handles MUST be destroyed.



#### **4.10.1.1.3. Securing ONC RPC Server-to-Server Copy Protocols**

After a destination server has a "copy\_to\_auth" privilege established on it, and it receives a COPY request, if it knows it will use an ONC RPC protocol to copy data, it will establish a "copy\_confirm\_auth" privilege on the source server prior to responding to the COPY operation as follows:

- o Before establishing an RPCSEC\_GSSv3 context, a parent context needs to exist between nfs@<destination> as the initiator principal, and nfs@<source> as the target principal. If NFS is to be used as the copy protocol, this means that the destination server must mount the source server using RPCSEC\_GSSv3.
- o An instance of copy\_confirm\_auth\_priv is filled in with information from the established "copy\_to\_auth" privilege. The value of the field ccap\_shared\_secret\_mic is a GSS\_GetMIC() of the ctap\_shared\_secret in the copy\_to\_auth privilege using the parent handle context. The field ccap\_username is the mapping of the user principal to an NFSv4 user name ("user"@domain form), and MUST be the same as the ctap\_username in the copy\_to\_auth privilege. The copy\_confirm\_auth\_priv instance is placed in rpc\_gss3\_create\_args assertions[0].privs.privilege. The string "copy\_confirm\_auth" is placed in assertions[0].privs.name.
- o The RPCSEC\_GSS3\_CREATE copy\_from\_auth message is sent to the source server with a QOP of rpc\_gss\_svc\_privacy. The source server unwraps the rpc\_gss\_svc\_privacy RPCSEC\_GSS3\_CREATE payload and verifies the cap\_shared\_secret\_mic by calling GSS\_VerifyMIC() using the parent context on the cfap\_shared\_secret from the established "copy\_from\_auth" privilege, and verifies that the ccap\_username equals the cfap\_username.
- o If all verification succeeds, the "copy\_confirm\_auth" privilege is established on the source server as < "copy\_confirm\_auth", shared\_secret\_mic, user id> Because the shared secret has been verified, the resultant copy\_confirm\_auth RPCSEC\_GSSv3 child handle is noted to be acting on behalf of the user principal.
- o If the source server fails to verify the copy\_from\_auth privilege the COPY operation will be rejected with NFS4ERR\_PARTNER\_NO\_AUTH, causing in turn the client to destroy the associated copy\_from\_auth and copy\_to\_auth RPCSEC\_GSSv3 structured privilege assertion handles.
- o All subsequent ONC RPC READ requests sent from the destination to copy data from the source to the destination will use the RPCSEC\_GSSv3 copy\_confirm\_auth child handle.



Note that the use of the "copy\_confirm\_auth" privilege accomplishes the following:

- o If a protocol like NFS is being used, with export policies, export policies can be overridden in case the destination server as-an-NFS-client is not authorized
- o Manual configuration to allow a copy relationship between the source and destination is not needed.

#### **4.10.1.1.4. Maintaining a Secure Inter-Server Copy**

If the client determines that either the copy\_from\_auth or the copy\_to\_auth handle becomes invalid during a copy, then the copy MUST be aborted by the client sending an OFFLOAD\_CANCEL to both the source and destination servers and destroying the respective copy related context handles as described in [Section 4.10.1.1.5](#).

#### **4.10.1.1.5. Finishing or Stopping a Secure Inter-Server Copy**

Under normal operation, the client MUST destroy the copy\_from\_auth and the copy\_to\_auth RPCSEC\_GSSv3 handle once the COPY operation returns for a synchronous inter-server copy or a CB\_OFFLOAD reports the result of an asynchronous copy.

The copy\_confirm\_auth privilege constructed from information held by the copy\_to\_auth privilege, and MUST be destroyed by the destination server (via an RPCSEC\_GSS3\_DESTROY call) when the copy\_to\_auth RPCSEC\_GSSv3 handle is destroyed.

The copy\_confirm\_auth RPCSEC\_GSS3 handle is associated with a copy\_from\_auth RPCSEC\_GSS3 handle on the source server via the shared secret and MUST be locally destroyed (there is no RPCSEC\_GSS3\_DESTROY as the source server is not the initiator) when the copy\_from\_auth RPCSEC\_GSSv3 handle is destroyed.

If the client sends an OFFLOAD\_CANCEL to the source server to rescind the destination server's synchronous copy privilege, it uses the privileged "copy\_from\_auth" RPCSEC\_GSSv3 handle and the cra\_destination\_server in OFFLOAD\_CANCEL MUST be the same as the name of the destination server specified in copy\_from\_auth\_priv. The source server will then delete the <"copy\_from\_auth", user id, destination> privilege and fail any subsequent copy requests sent under the auspices of this privilege from the destination server. The client MUST destroy both the "copy\_from\_auth" and the "copy\_to\_auth" RPCSEC\_GSSv3 handles.





If the client sends an OFFLOAD\_STATUS to the destination server to check on the status of an asynchronous copy, it uses the privileged "copy\_to\_auth" RPCSEC\_GSSv3 handle and the osa\_stateid in OFFLOAD\_STATUS MUST be the same as the wr\_callback\_id specified in the "copy\_to\_auth" privilege stored on the destination server.

If the client sends an OFFLOAD\_CANCEL to the destination server to cancel an asynchronous copy, it uses the privileged "copy\_to\_auth" RPCSEC\_GSSv3 handle and the oaa\_stateid in OFFLOAD\_CANCEL MUST be the same as the wr\_callback\_id specified in the "copy\_to\_auth" privilege stored on the destination server. The destination server will then delete the <"copy\_to\_auth", user id, source list, nonce, nonce MIC, context handle, handle version> privilege and the associated "copy\_confirm\_auth" RPCSEC\_GSSv3 handle. The client MUST destroy both the copy\_to\_auth and copy\_from\_auth RPCSEC\_GSSv3 handles.

#### **4.10.1.2. Inter-Server Copy via ONC RPC without RPCSEC\_GSS**

ONC RPC security flavors other than RPCSEC\_GSS MAY be used with the server-side copy offload operations described in this chapter. In particular, host-based ONC RPC security flavors such as AUTH\_NONE and AUTH\_SYS MAY be used. If a host-based security flavor is used, a minimal level of protection for the server-to-server copy protocol is possible.

In the absence of a strong security mechanism designed for the purpose, the challenge is how the source server and destination server identify themselves to each other, especially in the presence of multi-homed source and destination servers. In a multi-homed environment, the destination server might not contact the source server from the same network address specified by the client in the COPY\_NOTIFY. The cnr\_stateid returned from the COPY\_NOTIFY can be used to uniquely identify the destination server to the source server. The use of cnr\_stateid provides initial authentication of the destination server, but cannot defend against man-in-the-middle attacks after authentication or an eavesdropper that observes the opaque stateid on the wire. Other secure communication techniques (e.g., IPsec) are necessary to block these attacks.

Servers SHOULD reject COPY\_NOTIFY requests that do not use RPCSEC\_GSS with privacy, thus ensuring the cnr\_stateid in the COPY\_NOTIFY reply is encrypted. For the same reason, clients SHOULD send COPY requests to the destination using RPCSEC\_GSS with privacy.



#### **4.10.1.3. Inter-Server Copy without ONC RPC**

The same techniques as [Section 4.10.1.2](#), using unique URLs for each destination server, can be used for other protocols (e.g., HTTP [[RFC2616](#)] and FTP [[RFC959](#)]) as well.

### **5. Support for Application IO Hints**

Applications can issue client I/O hints via `posix_fadvise()` [[posix\\_fadvise](#)] to the NFS client. While this can help the NFS client optimize I/O and caching for a file, it does not allow the NFS server and its exported file system to do likewise. We add an `IO_ADVISE` procedure ([Section 15.5](#)) to communicate the client file access patterns to the NFS server. The NFS server upon receiving a `IO_ADVISE` operation MAY choose to alter its I/O and caching behavior, but is under no obligation to do so.

Application specific NFS clients such as those used by hypervisors and databases can also leverage application hints to communicate their specialized requirements.

### **6. Sparse Files**

#### **6.1. Introduction**

A sparse file is a common way of representing a large file without having to utilize all of the disk space for it. Consequently, a sparse file uses less physical space than its size indicates. This means the file contains 'holes', byte ranges within the file that contain no data. Most modern file systems support sparse files, including most UNIX file systems and NTFS, but notably not Apple's HFS+. Common examples of sparse files include Virtual Machine (VM) OS/disk images, database files, log files, and even checkpoint recovery files most commonly used by the HPC community.

In addition many modern file systems support the concept of 'unwritten' or 'uninitialized' blocks, which have uninitialized space allocated to them on disk, but will return zeros until data is written to them. Such functionality is already present in the data model of the pNFS Block/Volume Layout (see [[RFC5663](#)]). Uninitialized blocks can thought as holes inside a space reservation window.

If an application reads a hole in a sparse file, the file system must return all zeros to the application. For local data access there is little penalty, but with NFS these zeroes must be transferred back to the client. If an application uses the NFS client to read data into memory, this wastes time and bandwidth as the application waits for the zeroes to be transferred.



A sparse file is typically created by initializing the file to be all zeros - nothing is written to the data in the file, instead the hole is recorded in the metadata for the file. So a 8G disk image might be represented initially by a couple hundred bits in the inode and nothing on the disk. If the VM then writes 100M to a file in the middle of the image, there would now be two holes represented in the metadata and 100M in the data.

No new operation is needed to allow the creation of a sparsely populated file, when a file is created and a write occurs past the current size of the file, the non-allocated region will either be a hole or filled with zeros. The choice of behavior is dictated by the underlying file system and is transparent to the application. What is needed are the abilities to read sparse files and to punch holes to reinitialize the contents of a file.

Two new operations DEALLOCATE ([Section 15.4](#)) and READ\_PLUS ([Section 15.10](#)) are introduced. DEALLOCATE allows for the hole punching. I.e., an application might want to reset the allocation and reservation status of a range of the file. READ\_PLUS supports all the features of READ but includes an extension to support sparse files. READ\_PLUS is guaranteed to perform no worse than READ, and can dramatically improve performance with sparse files. READ\_PLUS does not depend on pNFS protocol features, but can be used by pNFS to support sparse files.

## **6.2. Terminology**

Regular file: An object of file type NF4REG or NF4NAMEDATTR.

Sparse file: A Regular file that contains one or more holes.

Hole: A byte range within a Sparse file that contains regions of all zeroes. A hole might or might not have space allocated or reserved to it.

## **6.3. New Operations**

### **6.3.1. READ\_PLUS**

READ\_PLUS is a new variant of the NFSv4.1 READ operation [[RFC5661](#)]. Besides being able to support all of the data semantics of the READ operation, it can also be used by the client and server to efficiently transfer holes. Note that as the client has no a priori knowledge of whether a hole is present or not, if the client supports READ\_PLUS and so does the server, then it should always use the READ\_PLUS operation in preference to the READ operation.



READ\_PLUS extends the response with a new arm representing holes to avoid returning data for portions of the file which are initialized to zero and may or may not contain a backing store. Returning data blocks of uninitialized data wastes computational and network resources, thus reducing performance.

When a client sends a READ operation, it is not prepared to accept a READ\_PLUS-style response providing a compact encoding of the scope of holes. If a READ occurs on a sparse file, then the server must expand such data to be raw bytes. If a READ occurs in the middle of a hole, the server can only send back bytes starting from that offset. By contrast, if a READ\_PLUS occurs in the middle of a hole, the server can send back a range which starts before the offset and extends past the range.

### **6.3.2. DEALLOCATE**

DEALLOCATE can be used to hole punch, which allows the client to avoid the transfer of a repetitive pattern of zeros across the network.

## **7. Space Reservation**

Applications want to be able to reserve space for a file, report the amount of actual disk space a file occupies, and free-up the backing space of a file when it is not required.

One example is the `posix_fallocate` ([\[posix\\_fallocate\]](#)) which allows applications to ask for space reservations from the operating system, usually to provide a better file layout and reduce overhead for random or slow growing file appending workloads.

Another example is space reservation for virtual disks in a hypervisor. In virtualized environments, virtual disk files are often stored on NFS mounted volumes. When a hypervisor creates a virtual disk file, it often tries to preallocate the space for the file so that there are no future allocation related errors during the operation of the virtual machine. Such errors prevent a virtual machine from continuing execution and result in downtime.

Currently, in order to achieve such a guarantee, applications zero the entire file. The initial zeroing allocates the backing blocks and all subsequent writes are overwrites of already allocated blocks. This approach is not only inefficient in terms of the amount of I/O done, it is also not guaranteed to work on file systems that are log structured or deduplicated. An efficient way of guaranteeing space reservation would be beneficial to such applications.





The new ALLOCATE operation (see [Section 15.1](#)) allows a client to request a guarantee that space will be available. The ALLOCATE operation guarantees that any future writes to the region it was successfully called for will not fail with NFS4ERR\_NOSPC.

Another useful feature is the ability to report the number of blocks that would be freed when a file is deleted. Currently, NFS reports two size attributes:

size The logical file size of the file.

space\_used The size in bytes that the file occupies on disk

While these attributes are sufficient for space accounting in traditional file systems, they prove to be inadequate in modern file systems that support block sharing. In such file systems, multiple inodes can point to a single block with a block reference count to guard against premature freeing. Having a way to tell the number of blocks that would be freed if the file was deleted would be useful to applications that wish to migrate files when a volume is low on space.

Since virtual disks represent a hard drive in a virtual machine, a virtual disk can be viewed as a file system within a file. Since not all blocks within a file system are in use, there is an opportunity to reclaim blocks that are no longer in use. A call to deallocate blocks could result in better space efficiency. Lesser space MAY be consumed for backups after block deallocation.

The following operations and attributes can be used to resolve these issues:

space\_freed This attribute specifies the space freed when a file is deleted, taking block sharing into consideration.

DEALLOCATE This operation deallocates the blocks backing a region of the file.

If space\_used of a file is interpreted to mean the size in bytes of all disk blocks pointed to by the inode of the file, then shared blocks get double counted, over-reporting the space utilization. This also has the adverse effect that the deletion of a file with shared blocks frees up less than space\_used bytes.

On the other hand, if space\_used is interpreted to mean the size in bytes of those disk blocks unique to the inode of the file, then shared blocks are not counted in any file, resulting in under-reporting of the space utilization.



For example, two files A and B have 10 blocks each. Let 6 of these blocks be shared between them. Thus, the combined space utilized by the two files is  $14 * \text{BLOCK\_SIZE}$  bytes. In the former case, the combined space utilization of the two files would be reported as  $20 * \text{BLOCK\_SIZE}$ . However, deleting either would only result in  $4 * \text{BLOCK\_SIZE}$  being freed. Conversely, the latter interpretation would report that the space utilization is only  $8 * \text{BLOCK\_SIZE}$ .

Adding another size attribute, `space_freed` (see [Section 12.2.2](#)), is helpful in solving this problem. `space_freed` is the number of blocks that are allocated to the given file that would be freed on its deletion. In the example, both A and B would report `space_freed` as  $4 * \text{BLOCK\_SIZE}$  and `space_used` as  $10 * \text{BLOCK\_SIZE}$ . If A is deleted, B will report `space_freed` as  $10 * \text{BLOCK\_SIZE}$  as the deletion of B would result in the deallocation of all 10 blocks.

The addition of these attributes does not solve the problem of space being over-reported. However, over-reporting is better than under-reporting.

## 8. Application Data Block Support

At the OS level, files are contained on disk blocks. Applications are also free to impose structure on the data contained in a file and we can define an Application Data Block (ADB) to be such a structure. From the application's viewpoint, it only wants to handle ADBs and not raw bytes (see [[Strohm11](#)]). An ADB is typically comprised of two sections: header and data. The header describes the characteristics of the block and can provide a means to detect corruption in the data payload. The data section is typically initialized to all zeros.

The format of the header is application specific, but there are two main components typically encountered:

1. An Application Data Block Number (ADBN) which allows the application to determine which data block is being referenced. This is useful when the client is not storing the blocks in contiguous memory, i.e., a logical block number.
2. Fields to describe the state of the ADB and a means to detect block corruption. For both pieces of data, a useful property is that allowed values be unique in that if passed across the network, corruption due to translation between big and little endian architectures are detectable. For example, `0xF0DEDEF0` has the same bit pattern in both architectures.

Applications already impose structures on files [[Strohm11](#)] and detect corruption in data blocks [[Ashdown08](#)]. What they are not able to do



is efficiently transfer and store ADBs. To initialize a file with ADBs, the client must send each full ADB to the server and that must be stored on the server.

In this section, we define a framework for transferring the ADB from client to server and present one approach to detecting corruption in a given ADB implementation.

### **8.1. Generic Framework**

We want the representation of the ADB to be flexible enough to support many different applications. The most basic approach is no imposition of a block at all, which means we are working with the raw bytes. Such an approach would be useful for storing holes, punching holes, etc. In more complex deployments, a server might be supporting multiple applications, each with their own definition of the ADB. One might store the ADBN at the start of the block and then have a guard pattern to detect corruption [McDougall07]. The next might store the ADBN at an offset of 100 bytes within the block and have no guard pattern at all, i.e., existing applications might already have well defined formats for their data blocks.

The guard pattern can be used to represent the state of the block, to protect against corruption, or both. Again, it needs to be able to be placed anywhere within the ADB.

We need to be able to represent the starting offset of the block and the size of the block. Note that nothing prevents the application from defining different sized blocks in a file.

#### **8.1.1. Data Block Representation**

<CODE BEGINS>

```
struct app_data_block4 {
    offset4      adb_offset;
    length4     adb_block_size;
    length4     adb_block_count;
    length4     adb_reloff_blocknum;
    count4     adb_block_num;
    length4     adb_reloff_pattern;
    opaque     adb_pattern<>;
};
```

<CODE ENDS>

The `app_data_block4` structure captures the abstraction presented for the ADB. The additional fields present are to allow the transmission



of `adb_block_count` ADBs at one time. We also use `adb_block_num` to convey the ADBN of the first block in the sequence. Each ADB will contain the same `adb_pattern` string.

As both `adb_block_num` and `adb_pattern` are optional, if either `adb_reloff_pattern` or `adb_reloff_blocknum` is set to `NFS4_UINT64_MAX`, then the corresponding field is not set in any of the ADB.

## 8.2. An Example of Detecting Corruption

In this section, we define an ADB format in which corruption can be detected. Note that this is just one possible format and means to detect corruption.

Consider a very basic implementation of an operating system's disk blocks. A block is either data or it is an indirect block which allows for files to be larger than one block. It is desired to be able to initialize a block. Lastly, to quickly unlink a file, a block can be marked invalid. The contents remain intact - which would enable this OS application to undelete a file.

The application defines 4k sized data blocks, with an 8 byte block counter occurring at offset 0 in the block, and with the guard pattern occurring at offset 8 inside the block. Furthermore, the guard pattern can take one of four states:

`0xfeedface` - This is the FREE state and indicates that the ADB format has been applied.

`0xcafedead` - This is the DATA state and indicates that real data has been written to this block.

`0xe4e5c001` - This is the INDIRECT state and indicates that the block contains block counter numbers that are chained off of this block.

`0xba1ed4a3` - This is the INVALID state and indicates that the block contains data whose contents are garbage.

Finally, it also defines an 8 byte checksum [[Baira08](#)] starting at byte 16 which applies to the remaining contents of the block. If the state is FREE, then that checksum is trivially zero. As such, the application has no need to transfer the checksum implicitly inside the ADB - it need not make the transfer layer aware of the fact that there is a checksum (see [[Ashdown08](#)] for an example of checksums used to detect corruption in application data blocks).

Corruption in each ADB can thus be detected:





- o If the guard pattern is anything other than one of the allowed values, including all zeros.
- o If the guard pattern is FREE and any other byte in the remainder of the ADB is anything other than zero.
- o If the guard pattern is anything other than FREE, then if the stored checksum does not match the computed checksum.
- o If the guard pattern is INDIRECT and one of the stored indirect block numbers has a value greater than the number of ADBs in the file.
- o If the guard pattern is INDIRECT and one of the stored indirect block numbers is a duplicate of another stored indirect block number.

As can be seen, the application can detect errors based on the combination of the guard pattern state and the checksum. But also, the application can detect corruption based on the state and the contents of the ADB. This last point is important in validating the minimum amount of data we incorporated into our generic framework. I.e., the guard pattern is sufficient in allowing applications to design their own corruption detection.

Finally, it is important to note that none of these corruption checks occur in the transport layer. The server and client components are totally unaware of the file format and might report everything as being transferred correctly even in the case the application detects corruption.

### **8.3. Example of READ\_PLUS**

The hypothetical application presented in [Section 8.2](#) can be used to illustrate how READ\_PLUS would return an array of results. A file is created and initialized with 100 4k ADBs in the FREE state with the WRITE\_SAME operation (see [Section 15.12](#)):

```
WRITE_SAME {0, 4k, 100, 0, 0, 8, 0xfeedface}
```

Further, assume the application writes a single ADB at 16k, changing the guard pattern to 0xcafedead, we would then have in memory:



```

0k -> (4k - 1) : 00 00 00 00 fe ed fa ce 00 00 ... 00 00
4k -> (8k - 1) : 00 00 00 01 fe ed fa ce 00 00 ... 00 00
8k -> (12k - 1) : 00 00 00 02 fe ed fa ce 00 00 ... 00 00
12k -> (16k - 1) : 00 00 00 03 fe ed fa ce 00 00 ... 00 00
16k -> (20k - 1) : 00 00 00 04 ca fe de ad 00 00 ... 00 00
20k -> (24k - 1) : 00 00 00 05 fe ed fa ce 00 00 ... 00 00
24k -> (28k - 1) : 00 00 00 06 fe ed fa ce 00 00 ... 00 00
...
396k -> (400k - 1) : 00 00 00 63 fe ed fa ce 00 00 ... 00 00

```

And when the client did a READ\_PLUS of 64k at the start of the file, it could get back a result of data:

```

0k -> (4k - 1) : 00 00 00 00 fe ed fa ce 00 00 ... 00 00
4k -> (8k - 1) : 00 00 00 01 fe ed fa ce 00 00 ... 00 00
8k -> (12k - 1) : 00 00 00 02 fe ed fa ce 00 00 ... 00 00
12k -> (16k - 1) : 00 00 00 03 fe ed fa ce 00 00 ... 00 00
16k -> (20k - 1) : 00 00 00 04 ca fe de ad 00 00 ... 00 00
20k -> (24k - 1) : 00 00 00 05 fe ed fa ce 00 00 ... 00 00
24k -> (24k - 1) : 00 00 00 06 fe ed fa ce 00 00 ... 00 00
...
62k -> (64k - 1) : 00 00 00 15 fe ed fa ce 00 00 ... 00 00

```

#### **8.4. An Example of Zeroing Space**

A simpler use case for WRITE\_SAME are applications that want to efficiently zero out a file, but do not want to modify space reservations. This can easily be achieved by a call to WRITE\_SAME without a ADB block numbers and pattern, e.g.:

```
WRITE_SAME {0, 1k, 10000, 0, 0, 0, 0}
```

## **9. Labeled NFS**

### **9.1. Introduction**

Access control models such as Unix permissions or Access Control Lists are commonly referred to as Discretionary Access Control (DAC) models. These systems base their access decisions on user identity and resource ownership. In contrast Mandatory Access Control (MAC) models base their access control decisions on the label on the subject (usually a process) and the object it wishes to access [[RFC7204](#)]. These labels may contain user identity information but usually contain additional information. In DAC systems users are free to specify the access rules for resources that they own. MAC models base their security decisions on a system wide policy established by an administrator or organization which the users do



not have the ability to override. In this section, we add a MAC model to NFSv4.2.

First we provide a method for transporting and storing security label data on NFSv4 file objects. Security labels have several semantics that are met by NFSv4 recommended attributes such as the ability to set the label value upon object creation. Access control on these attributes are done through a combination of two mechanisms. As with other recommended attributes on file objects the usual DAC checks (ACLs and permission bits) will be performed to ensure that proper file ownership is enforced. In addition a MAC system MAY be employed on the client, server, or both to enforce additional policy on what subjects may modify security label information.

Second, we describe a method for the client to determine if an NFSv4 file object security label has changed. A client which needs to know if a label on a file or set of files is going to change SHOULD request a delegation on each labeled file. In order to change such a security label, the server will have to recall delegations on any file affected by the label change, so informing clients of the label change.

An additional useful feature would be modification to the RPC layer used by NFSv4 to allow RPC calls to carry security labels and enable full mode enforcement as described in [Section 9.6.1](#). Such modifications are outside the scope of this document (see [[rpcsec\\_gssv3](#)]).

## **9.2. Definitions**

**Label Format Specifier (LFS):** is an identifier used by the client to establish the syntactic format of the security label and the semantic meaning of its components. These specifiers exist in a registry associated with documents describing the format and semantics of the label.

**Label Format Registry:** is the IANA registry (see [[Quigley14](#)]) containing all registered LFSes along with references to the documents that describe the syntactic format and semantics of the security label.

**Policy Identifier (PI):** is an optional part of the definition of a Label Format Specifier which allows for clients and server to identify specific security policies.

**Object:** is a passive resource within the system that we wish to be protected. Objects can be entities such as files, directories,



pipes, sockets, and many other system resources relevant to the protection of the system state.

Subject: is an active entity usually a process which is requesting access to an object.

MAC-Aware: is a server which can transmit and store object labels.

MAC-Functional: is a client or server which is Labeled NFS enabled. Such a system can interpret labels and apply policies based on the security system.

Multi-Level Security (MLS): is a traditional model where objects are given a sensitivity level (Unclassified, Secret, Top Secret, etc) and a category set (see [[BL73](#)], [[RFC1108](#)], and [[RFC2401](#)]).

### **9.3. MAC Security Attribute**

MAC models base access decisions on security attributes bound to subjects and objects. This information can range from a user identity for an identity based MAC model, sensitivity levels for Multi-level security, or a type for Type Enforcement. These models base their decisions on different criteria but the semantics of the security attribute remain the same. The semantics required by the security attributes are listed below:

- o MUST provide flexibility with respect to the MAC model.
- o MUST provide the ability to atomically set security information upon object creation.
- o MUST provide the ability to enforce access control decisions both on the client and the server.
- o MUST NOT expose an object to either the client or server name space before its security information has been bound to it.

NFSv4 implements the security attribute as a recommended attribute. These attributes have a fixed format and semantics, which conflicts with the flexible nature of the security attribute. To resolve this the security attribute consists of two components. The first component is a LFS as defined in [[Quigley14](#)] to allow for interoperability between MAC mechanisms. The second component is an opaque field which is the actual security attribute data. To allow for various MAC models, NFSv4 should be used solely as a transport mechanism for the security attribute. It is the responsibility of the endpoints to consume the security attribute and make access decisions based on their respective models. In addition, creation of





objects through OPEN and CREATE allows for the security attribute to be specified upon creation. By providing an atomic create and set operation for the security attribute it is possible to enforce the second and fourth requirements. The recommended attribute FATTR4\_SEC\_LABEL (see [Section 12.2.4](#)) will be used to satisfy this requirement.

### **[9.3.1.](#) Delegations**

In the event that a security attribute is changed on the server while a client holds a delegation on the file, both the server and the client MUST follow the NFSv4.1 protocol (see Chapter 10 of [[RFC5661](#)]) with respect to attribute changes. It SHOULD flush all changes back to the server and relinquish the delegation.

### **[9.3.2.](#) Permission Checking**

It is not feasible to enumerate all possible MAC models and even levels of protection within a subset of these models. This means that the NFSv4 client and servers cannot be expected to directly make access control decisions based on the security attribute. Instead NFSv4 should defer permission checking on this attribute to the host system. These checks are performed in addition to existing DAC and ACL checks outlined in the NFSv4 protocol. [Section 9.6](#) gives a specific example of how the security attribute is handled under a particular MAC model.

### **[9.3.3.](#) Object Creation**

When creating files in NFSv4 the OPEN and CREATE operations are used. One of the parameters to these operations is an fattr4 structure containing the attributes the file is to be created with. This allows NFSv4 to atomically set the security attribute of files upon creation. When a client is MAC-Functional it must always provide the initial security attribute upon file creation. In the event that the server is MAC-Functional as well, it should determine by policy whether it will accept the attribute from the client or instead make the determination itself. If the client is not MAC-Functional, then the MAC-Functional server must decide on a default label. A more in depth explanation can be found in [Section 9.6](#).

### **[9.3.4.](#) Existing Objects**

Note that under the MAC model, all objects must have labels. Therefore, if an existing server is upgraded to include Labeled NFS support, then it is the responsibility of the security system to define the behavior for existing objects.



### **9.3.5. Label Changes**

Consider a guest mode system ([Section 9.6.2](#)) in which the clients enforce MAC checks and the server has only a DAC security system which stores the labels along with the file data. In this type of system, a user with the appropriate DAC credentials on a client with poorly configured or disabled MAC labeling enforcement is allowed access to the file label (and data) on the server and can change the label.

Clients which need to know if a label on a file or set of files has changed SHOULD request a delegation on each labeled file so that a label change by another client will be known via the process described in [Section 9.3.1](#) which must be followed: the delegation will be recalled, which effectively notifies the client of the change.

Note that the MAC security policies on a client can be such that the client does not have access to the file unless it has a delegation.

### **9.4. pNFS Considerations**

The new FATTR4\_SEC\_LABEL attribute is metadata information and as such the DS is not aware of the value contained on the MDS. Fortunately, the NFSv4.1 protocol [[RFC5661](#)] already has provisions for doing access level checks from the DS to the MDS. In order for the DS to validate the subject label presented by the client, it SHOULD utilize this mechanism.

### **9.5. Discovery of Server Labeled NFS Support**

The server can easily determine that a client supports Labeled NFS when it queries for the FATTR4\_SEC\_LABEL label for an object. The client might need to discover which LFS the server supports.

The following compound MUST NOT be denied by any MAC label check:

```
PUTROOTFH, GETATTR {FATTR4_SEC_LABEL}
```

Note that the server might have imposed a security flavor on the root that precludes such access. I.e., if the server requires kerberized access and the client presents a compound with AUTH\_SYS, then the server is allowed to return NFS4ERR\_WRONGSEC in this case. But if the client presents a correct security flavor, then the server MUST return the FATTR4\_SEC\_LABEL attribute with the supported LFS filled in.



## **9.6. MAC Security NFS Modes of Operation**

A system using Labeled NFS may operate in two modes. The first mode provides the most protection and is called "full mode". In this mode both the client and server implement a MAC model allowing each end to make an access control decision. The remaining mode is called the "guest mode" and in this mode one end of the connection is not implementing a MAC model and thus offers less protection than full mode.

### **9.6.1. Full Mode**

Full mode environments consist of MAC-Functional NFSv4 servers and clients and may be composed of mixed MAC models and policies. The system requires that both the client and server have an opportunity to perform an access control check based on all relevant information within the network. The file object security attribute is provided using the mechanism described in [Section 9.3](#).

Fully MAC-Functional NFSv4 servers are not possible in the absence of RPCSEC\_GSSV3 [[rpcsec\\_gssv3](#)] support for subject label transport. However, servers may make decisions based on the RPC credential information available.

#### **9.6.1.1. Initial Labeling and Translation**

The ability to create a file is an action that a MAC model may wish to mediate. The client is given the responsibility to determine the initial security attribute to be placed on a file. This allows the client to make a decision as to the acceptable security attributes to create a file with before sending the request to the server. Once the server receives the creation request from the client it may choose to evaluate if the security attribute is acceptable.

Security attributes on the client and server may vary based on MAC model and policy. To handle this the security attribute field has an LFS component. This component is a mechanism for the host to identify the format and meaning of the opaque portion of the security attribute. A full mode environment may contain hosts operating in several different LFSes. In this case a mechanism for translating the opaque portion of the security attribute is needed. The actual translation function will vary based on MAC model and policy and is out of the scope of this document. If a translation is unavailable for a given LFS then the request MUST be denied. Another recourse is to allow the host to provide a fallback mapping for unknown security attributes.



#### **9.6.1.2. Policy Enforcement**

In full mode access control decisions are made by both the clients and servers. When a client makes a request it takes the security attribute from the requesting process and makes an access control decision based on that attribute and the security attribute of the object it is trying to access. If the client denies that access an RPC call to the server is never made. If however the access is allowed the client will make a call to the NFS server.

When the server receives the request from the client it uses any credential information conveyed in the RPC request and the attributes of the object the client is trying to access to make an access control decision. If the server's policy allows this access it will fulfill the client's request, otherwise it will return NFS4ERR\_ACCESS.

Future protocol extensions may also allow the server to factor into the decision a security label extracted from the RPC request.

Implementations MAY validate security attributes supplied over the network to ensure that they are within a set of attributes permitted from a specific peer, and if not, reject them. Note that a system may permit a different set of attributes to be accepted from each peer.

#### **9.6.1.3. Limited Server**

A Limited Server mode (see [Section 4.2 of \[RFC7204\]](#)) consists of a server which is label aware, but does not enforce policies. Such a server will store and retrieve all object labels presented by clients, utilize the methods described in [Section 9.3.5](#) to allow the clients to detect changing labels, but may not factor the label into access decisions. Instead, it will expect the clients to enforce all such access locally.

#### **9.6.2. Guest Mode**

Guest mode implies that either the client or the server does not handle labels. If the client is not Labeled NFS aware, then it will not offer subject labels to the server. The server is the only entity enforcing policy, and may selectively provide standard NFS services to clients based on their authentication credentials and/or associated network attributes (e.g., IP address, network interface). The level of trust and access extended to a client in this mode is configuration-specific. If the server is not Labeled NFS aware, then it will not return object labels to the client. Clients in this environment are may consist of groups implementing different MAC





model policies. The system requires that all clients in the environment be responsible for access control checks.

### **9.7. Security Considerations for Labeled NFS**

This entire chapter deals with security issues.

Depending on the level of protection the MAC system offers there may be a requirement to tightly bind the security attribute to the data.

When only one of the client or server enforces labels, it is important to realize that the other side is not enforcing MAC protections. Alternate methods might be in use to handle the lack of MAC support and care should be taken to identify and mitigate threats from possible tampering outside of these methods.

An example of this is that a server that modifies REaddir or LOOKUP results based on the client's subject label might want to always construct the same subject label for a client which does not present one. This will prevent a non-labeled NFS client from mixing entries in the directory cache.

### **10. Sharing change attribute implementation characteristics with NFSv4 clients**

Although both the NFSv4 [[RFC7530](#)] and NFSv4.1 protocol [[RFC5661](#)], define the change attribute as being mandatory to implement, there is little in the way of guidance as to its construction. The only mandated constraint is that the value must change whenever the file data or metadata change.

While this allows for a wide range of implementations, it also leaves the client with no way to determine which is the most recent value for the change attribute in a case where several RPC calls have been issued in parallel. In other words if two COMPOUNDS, both containing WRITE and GETATTR requests for the same file, have been issued in parallel, how does the client determine which of the two change attribute values returned in the replies to the GETATTR requests correspond to the most recent state of the file? In some cases, the only recourse may be to send another COMPOUND containing a third GETATTR that is fully serialized with the first two.

NFSv4.2 avoids this kind of inefficiency by allowing the server to share details about how the change attribute is expected to evolve, so that the client may immediately determine which, out of the several change attribute values returned by the server, is the most recent. `change_attr_type` is defined as a new recommended attribute (see [Section 12.2.3](#)), and is per file system.



**11. Error Values**

NFS error numbers are assigned to failed operations within a Compound (COMPOUND or CB\_COMPOUND) request. A Compound request contains a number of NFS operations that have their results encoded in sequence in a Compound reply. The results of successful operations will consist of an NFS4\_OK status followed by the encoded results of the operation. If an NFS operation fails, an error status will be entered in the reply and the Compound request will be terminated.

**11.1. Error Definitions**

Protocol Error Definitions

| Error                   | Number | Description                      |
|-------------------------|--------|----------------------------------|
| NFS4ERR_BADLABEL        | 10093  | <a href="#">Section 11.1.3.1</a> |
| NFS4ERR_OFFLOAD_DENIED  | 10091  | <a href="#">Section 11.1.2.1</a> |
| NFS4ERR_OFFLOAD_NO_REQS | 10094  | <a href="#">Section 11.1.2.2</a> |
| NFS4ERR_PARTNER_NO_AUTH | 10089  | <a href="#">Section 11.1.2.3</a> |
| NFS4ERR_PARTNER_NOTSUPP | 10088  | <a href="#">Section 11.1.2.4</a> |
| NFS4ERR_UNION_NOTSUPP   | 10090  | <a href="#">Section 11.1.1.1</a> |
| NFS4ERR_WRONG_LFS       | 10092  | <a href="#">Section 11.1.3.2</a> |

Table 1

**11.1.1. General Errors**

This section deals with errors that are applicable to a broad set of different purposes.

**11.1.1.1. NFS4ERR\_UNION\_NOTSUPP (Error Code 10090)**

One of the arguments to the operation is a discriminated union and while the server supports the given operation, it does not support the selected arm of the discriminated union.

**11.1.2. Server to Server Copy Errors**

These errors deal with the interaction between server to server copies.



**11.1.2.1. NFS4ERR\_OFFLOAD\_DENIED (Error Code 10091)**

The copy offload operation is supported by both the source and the destination, but the destination is not allowing it for this file. If the client sees this error, it should fall back to the normal copy semantics.

**11.1.2.2. NFS4ERR\_OFFLOAD\_NO\_REQS (Error Code 10094)**

The copy offload operation is supported by both the source and the destination, but the destination can not meet the client requirements for either consecutive byte copy or synchronous copy. If the client sees this error, it should either relax the requirements (if any) or fall back to the normal copy semantics.

**11.1.2.3. NFS4ERR\_PARTNER\_NO\_AUTH (Error Code 10089)**

The source server does not authorize a server-to-server copy offload operation. This may be due to the client's failure to send the COPY\_NOTIFY operation to the source server, the source server receiving a server-to-server copy offload request after the copy lease time expired, or for some other permission problem.

**11.1.2.4. NFS4ERR\_PARTNER\_NOTSUPP (Error Code 10088)**

The remote server does not support the server-to-server copy offload protocol.

**11.1.3. Labeled NFS Errors**

These errors are used in Labeled NFS.

**11.1.3.1. NFS4ERR\_BADLABEL (Error Code 10093)**

The label specified is invalid in some manner.

**11.1.3.2. NFS4ERR\_WRONG\_LFS (Error Code 10092)**

The LFS specified in the subject label is not compatible with the LFS in the object label.

**11.2. New Operations and Their Valid Errors**

This section contains a table that gives the valid error returns for each new NFSv4.2 protocol operation. The error code NFS4\_OK (indicating no error) is not listed but should be understood to be returnable by all new operations. The error values for all other operations are defined in [Section 15.2 of \[RFC5661\]](#).



Valid Error Returns for Each New Protocol Operation

| Operation | Errors  |
|-----------|---|
| ALLOCATE  | NFS4ERR_ACCESS, NFS4ERR_ADMIN_REVOKED,<br>NFS4ERR_BADXDR, NFS4ERR_BAD_STATEID,<br>NFS4ERR_DEADSESSION, NFS4ERR_DELAY,<br>NFS4ERR_DELEG_REVOKED, NFS4ERR_DQUOT,<br>NFS4ERR_EXPIRED, NFS4ERR_FBIG,<br>NFS4ERR_FHEXPIRED, NFS4ERR_GRACE, NFS4ERR_INVAL,<br>NFS4ERR_IO, NFS4ERR_ISDIR, NFS4ERR_MOVED,<br>NFS4ERR_NOFILEHANDLE, NFS4ERR_NOSPC,<br>NFS4ERR_NOTSUPP, NFS4ERR_OLD_STATEID,<br>NFS4ERR_OPENMODE, NFS4ERR_OP_NOT_IN_SESSION,<br>NFS4ERR_REP_TOO_BIG,<br>NFS4ERR_REP_TOO_BIG_TO_CACHE,<br>NFS4ERR_REQ_TOO_BIG, NFS4ERR_RETRY_UNCACHED_REP,<br>NFS4ERR_ROFS, NFS4ERR_SERVERFAULT,<br>NFS4ERR_STALE, NFS4ERR_SYMLINK,<br>NFS4ERR_TOO_MANY_OPS, NFS4ERR_WRONG_TYPE                  |
| CLONE     | NFS4ERR_ACCESS, NFS4ERR_ADMIN_REVOKED,<br>NFS4ERR_BADXDR, NFS4ERR_BAD_STATEID,<br>NFS4ERR_DEADSESSION, NFS4ERR_DELAY,<br>NFS4ERR_DELEG_REVOKED, NFS4ERR_DQUOT,<br>NFS4ERR_EXPIRED, NFS4ERR_FBIG,<br>NFS4ERR_FHEXPIRED, NFS4ERR_GRACE, NFS4ERR_INVAL,<br>NFS4ERR_IO, NFS4ERR_ISDIR, NFS4ERR_MOVED,<br>NFS4ERR_NOFILEHANDLE, NFS4ERR_NOTSUPP,<br>NFS4ERR_NOSPC, NFS4ERR_OLD_STATEID,<br>NFS4ERR_OPENMODE, NFS4ERR_OP_NOT_IN_SESSION,<br>NFS4ERR_REP_TOO_BIG,<br>NFS4ERR_REP_TOO_BIG_TO_CACHE,<br>NFS4ERR_REQ_TOO_BIG, NFS4ERR_RETRY_UNCACHED_REP,<br>NFS4ERR_ROFS, NFS4ERR_SERVERFAULT,<br>NFS4ERR_STALE, NFS4ERR_SYMLINK,<br>NFS4ERR_TOO_MANY_OPS, NFS4ERR_WRONG_TYPE,<br>NFS4ERR_XDEV |
| COPY      | NFS4ERR_ACCESS, NFS4ERR_ADMIN_REVOKED,<br>NFS4ERR_BADXDR, NFS4ERR_BAD_STATEID,<br>NFS4ERR_DEADSESSION, NFS4ERR_DELAY,<br>NFS4ERR_DELEG_REVOKED, NFS4ERR_DQUOT,<br>NFS4ERR_EXPIRED, NFS4ERR_FBIG,<br>NFS4ERR_FHEXPIRED, NFS4ERR_GRACE, NFS4ERR_INVAL,<br>NFS4ERR_IO, NFS4ERR_ISDIR, NFS4ERR_LOCKED,<br>NFS4ERR_MOVED, NFS4ERR_NOFILEHANDLE,<br>NFS4ERR_NOSPC, NFS4ERR_OFFLOAD_DENIED,<br>NFS4ERR_OLD_STATEID, NFS4ERR_OPENMODE,  |





|               |  |
|---------------|--|
|               | NFS4ERR_OP_NOT_IN_SESSION,                         |
|               | NFS4ERR_PARTNER_NO_AUTH,                           |
|               | NFS4ERR_PARTNER_NOTSUPP, NFS4ERR_PNFS_IO_HOLE,     |
|               | NFS4ERR_PNFS_NO_LAYOUT, NFS4ERR_REP_TOO_BIG,       |
|               | NFS4ERR_REP_TOO_BIG_TO_CACHE,                      |
|               | NFS4ERR_REQ_TOO_BIG, NFS4ERR_RETRY_UNCACHED_REP,   |
|               | NFS4ERR_R0FS, NFS4ERR_SERVERFAULT,                 |
|               | NFS4ERR_STALE, NFS4ERR_SYMLINK,                    |
|               | NFS4ERR_TOO_MANY_OPS, NFS4ERR_WRONG_TYPE           |
| COPY_NOTIFY   | NFS4ERR_ACCESS, NFS4ERR_ADMIN_REVOKED,             |
|               | NFS4ERR_BADXDR, NFS4ERR_BAD_STATEID,               |
|               | NFS4ERR_DEADSESSION, NFS4ERR_DELAY,                |
|               | NFS4ERR_DELEG_REVOKED, NFS4ERR_EXPIRED,            |
|               | NFS4ERR_FHEXPIRED, NFS4ERR_GRACE, NFS4ERR_INVALID, |
|               | NFS4ERR_ISDIR, NFS4ERR_IO, NFS4ERR_LOCKED,         |
|               | NFS4ERR_MOVED, NFS4ERR_NOFILEHANDLE,               |
|               | NFS4ERR_OLD_STATEID, NFS4ERR_OPENMODE,             |
|               | NFS4ERR_OP_NOT_IN_SESSION, NFS4ERR_PNFS_IO_HOLE,   |
|               | NFS4ERR_PNFS_NO_LAYOUT, NFS4ERR_REP_TOO_BIG,       |
|               | NFS4ERR_REP_TOO_BIG_TO_CACHE,                      |
|               | NFS4ERR_REQ_TOO_BIG, NFS4ERR_RETRY_UNCACHED_REP,   |
|               | NFS4ERR_SERVERFAULT, NFS4ERR_STALE,                |
|               | NFS4ERR_SYMLINK, NFS4ERR_TOO_MANY_OPS,             |
|               | NFS4ERR_WRONG_TYPE                                 |
| DEALLOCATE    | NFS4ERR_ACCESS, NFS4ERR_ADMIN_REVOKED,             |
|               | NFS4ERR_BADXDR, NFS4ERR_BAD_STATEID,               |
|               | NFS4ERR_DEADSESSION, NFS4ERR_DELAY,                |
|               | NFS4ERR_DELEG_REVOKED, NFS4ERR_EXPIRED,            |
|               | NFS4ERR_FBIG, NFS4ERR_FHEXPIRED, NFS4ERR_GRACE,    |
|               | NFS4ERR_INVALID, NFS4ERR_IO, NFS4ERR_ISDIR,        |
|               | NFS4ERR_MOVED, NFS4ERR_NOFILEHANDLE,               |
|               | NFS4ERR_NOTSUPP, NFS4ERR_OLD_STATEID,              |
|               | NFS4ERR_OPENMODE, NFS4ERR_OP_NOT_IN_SESSION,       |
|               | NFS4ERR_REP_TOO_BIG,                               |
|               | NFS4ERR_REP_TOO_BIG_TO_CACHE,                      |
|               | NFS4ERR_REQ_TOO_BIG, NFS4ERR_RETRY_UNCACHED_REP,   |
|               | NFS4ERR_R0FS, NFS4ERR_SERVERFAULT,                 |
|               | NFS4ERR_STALE, NFS4ERR_SYMLINK,                    |
|               | NFS4ERR_TOO_MANY_OPS, NFS4ERR_WRONG_TYPE           |
| GETDEVICELIST | NFS4ERR_NOTSUPP                                    |
| LAYOUTERROR   | NFS4ERR_ADMIN_REVOKED, NFS4ERR_BADXDR,             |
|               | NFS4ERR_BAD_STATEID, NFS4ERR_DEADSESSION,          |
|               | NFS4ERR_DELAY, NFS4ERR_DELEG_REVOKED,              |
|               | NFS4ERR_EXPIRED, NFS4ERR_FHEXPIRED,                |
|               | NFS4ERR_GRACE, NFS4ERR_INVALID, NFS4ERR_ISDIR,     |
|               | NFS4ERR_MOVED, NFS4ERR_NOFILEHANDLE,               |
|               | NFS4ERR_NOTSUPP, NFS4ERR_NO_GRACE,                 |
|               | NFS4ERR_OLD_STATEID, NFS4ERR_OP_NOT_IN_SESSION,    |



|                |  |
|----------------|--|
|                | NFS4ERR_REP_TOO_BIG,                               |
|                | NFS4ERR_REP_TOO_BIG_TO_CACHE,                      |
|                | NFS4ERR_REQ_TOO_BIG, NFS4ERR_RETRY_UNCACHED_REP,   |
|                | NFS4ERR_SERVERFAULT, NFS4ERR_STALE,                |
|                | NFS4ERR_TOO_MANY_OPS,                              |
|                | NFS4ERR_UNKNOWN_LAYOUTTYPE, NFS4ERR_WRONG_CRED,    |
|                | NFS4ERR_WRONG_TYPE                                 |
| LAYOUTSTATS    | NFS4ERR_ADMIN_REVOKED, NFS4ERR_BADXDR,             |
|                | NFS4ERR_BAD_STATEID, NFS4ERR_DEADSESSION,          |
|                | NFS4ERR_DELAY, NFS4ERR_DELEG_REVOKED,              |
|                | NFS4ERR_EXPIRED, NFS4ERR_FHEXPIRED,                |
|                | NFS4ERR_GRACE, NFS4ERR_INVALID, NFS4ERR_ISDIR,     |
|                | NFS4ERR_MOVED, NFS4ERR_NOFILEHANDLE,               |
|                | NFS4ERR_NOTSUPP, NFS4ERR_NO_GRACE,                 |
|                | NFS4ERR_OLD_STATEID, NFS4ERR_OP_NOT_IN_SESSION,    |
|                | NFS4ERR_REP_TOO_BIG,                               |
|                | NFS4ERR_REP_TOO_BIG_TO_CACHE,                      |
|                | NFS4ERR_REQ_TOO_BIG, NFS4ERR_RETRY_UNCACHED_REP,   |
|                | NFS4ERR_SERVERFAULT, NFS4ERR_STALE,                |
|                | NFS4ERR_TOO_MANY_OPS,                              |
|                | NFS4ERR_UNKNOWN_LAYOUTTYPE, NFS4ERR_WRONG_CRED,    |
|                | NFS4ERR_WRONG_TYPE                                 |
| OFFLOAD_CANCEL | NFS4ERR_ADMIN_REVOKED, NFS4ERR_BADXDR,             |
|                | NFS4ERR_BAD_STATEID, NFS4ERR_COMPLETE_ALREADY,     |
|                | NFS4ERR_DEADSESSION, NFS4ERR_EXPIRED,              |
|                | NFS4ERR_DELAY, NFS4ERR_GRACE, NFS4ERR_NOTSUPP,     |
|                | NFS4ERR_OLD_STATEID, NFS4ERR_OP_NOT_IN_SESSION,    |
|                | NFS4ERR_SERVERFAULT, NFS4ERR_TOO_MANY_OPS          |
| OFFLOAD_STATUS | NFS4ERR_ADMIN_REVOKED, NFS4ERR_BADXDR,             |
|                | NFS4ERR_BAD_STATEID, NFS4ERR_COMPLETE_ALREADY,     |
|                | NFS4ERR_DEADSESSION, NFS4ERR_EXPIRED,              |
|                | NFS4ERR_DELAY, NFS4ERR_GRACE, NFS4ERR_NOTSUPP,     |
|                | NFS4ERR_OLD_STATEID, NFS4ERR_OP_NOT_IN_SESSION,    |
|                | NFS4ERR_SERVERFAULT, NFS4ERR_TOO_MANY_OPS          |
| READ_PLUS      | NFS4ERR_ACCESS, NFS4ERR_ADMIN_REVOKED,             |
|                | NFS4ERR_BADXDR, NFS4ERR_BAD_STATEID,               |
|                | NFS4ERR_DEADSESSION, NFS4ERR_DELAY,                |
|                | NFS4ERR_DELEG_REVOKED, NFS4ERR_EXPIRED,            |
|                | NFS4ERR_FHEXPIRED, NFS4ERR_GRACE, NFS4ERR_INVALID, |
|                | NFS4ERR_ISDIR, NFS4ERR_IO, NFS4ERR_LOCKED,         |
|                | NFS4ERR_MOVED, NFS4ERR_NOFILEHANDLE,               |
|                | NFS4ERR_NOTSUPP, NFS4ERR_OLD_STATEID,              |
|                | NFS4ERR_OPENMODE, NFS4ERR_OP_NOT_IN_SESSION,       |
|                | NFS4ERR_PNFS_IO_HOLE, NFS4ERR_PNFS_NO_LAYOUT,      |
|                | NFS4ERR_REP_TOO_BIG,                               |
|                | NFS4ERR_REP_TOO_BIG_TO_CACHE,                      |
|                | NFS4ERR_REQ_TOO_BIG, NFS4ERR_RETRY_UNCACHED_REP,   |
|                | NFS4ERR_SERVERFAULT, NFS4ERR_STALE,                |



|   |  |
|---|--|
| SEEK                                      | NFS4ERR_SYMLINK, NFS4ERR_TOO_MANY_OPS,           |
|   | NFS4ERR_WRONG_TYPE                               |
|   | NFS4ERR_ACCESS, NFS4ERR_ADMIN_REVOKED,           |
|   | NFS4ERR_BADXDR, NFS4ERR_BAD_STATEID,             |
|   | NFS4ERR_DEADSESSION, NFS4ERR_DELAY,              |
|   | NFS4ERR_DELEG_REVOKED, NFS4ERR_EXPIRED,          |
|   | NFS4ERR_FHEXPIRED, NFS4ERR_GRACE, NFS4ERR_INVAL, |
|   | NFS4ERR_ISDIR, NFS4ERR_IO, NFS4ERR_LOCKED,       |
|   | NFS4ERR_MOVED, NFS4ERR_NOFILEHANDLE,             |
|   | NFS4ERR_NOTSUPP, NFS4ERR_OLD_STATEID,            |
|   | NFS4ERR_OPENMODE, NFS4ERR_OP_NOT_IN_SESSION,     |
|   | NFS4ERR_PNFS_IO_HOLE, NFS4ERR_PNFS_NO_LAYOUT,    |
|   | NFS4ERR_REP_TOO_BIG,                             |
|   | NFS4ERR_REP_TOO_BIG_TO_CACHE,                    |
|   | NFS4ERR_REQ_TOO_BIG, NFS4ERR_RETRY_UNCACHED_REP, |
|   | NFS4ERR_SERVERFAULT, NFS4ERR_STALE,              |
|   | NFS4ERR_SYMLINK, NFS4ERR_TOO_MANY_OPS,           |
| NFS4ERR_UNION_NOTSUPP, NFS4ERR_WRONG_TYPE |  |
| WRITE_SAME                                | NFS4ERR_ACCESS, NFS4ERR_ADMIN_REVOKED,           |
|   | NFS4ERR_BADXDR, NFS4ERR_BAD_STATEID,             |
|   | NFS4ERR_DEADSESSION, NFS4ERR_DELAY,              |
|   | NFS4ERR_DELEG_REVOKED, NFS4ERR_DQUOT,            |
|   | NFS4ERR_EXPIRED, NFS4ERR_FBIG,                   |
|   | NFS4ERR_FHEXPIRED, NFS4ERR_GRACE, NFS4ERR_INVAL, |
|   | NFS4ERR_IO, NFS4ERR_ISDIR, NFS4ERR_LOCKED,       |
|   | NFS4ERR_MOVED, NFS4ERR_NOFILEHANDLE,             |
|   | NFS4ERR_NOSPC, NFS4ERR_NOTSUPP,                  |
|   | NFS4ERR_OLD_STATEID, NFS4ERR_OPENMODE,           |
|   | NFS4ERR_OP_NOT_IN_SESSION, NFS4ERR_PNFS_IO_HOLE, |
|   | NFS4ERR_PNFS_NO_LAYOUT, NFS4ERR_REP_TOO_BIG,     |
|   | NFS4ERR_REP_TOO_BIG_TO_CACHE,                    |
|   | NFS4ERR_REQ_TOO_BIG, NFS4ERR_RETRY_UNCACHED_REP, |
|   | NFS4ERR_ROFS, NFS4ERR_SERVERFAULT,               |
|   | NFS4ERR_STALE, NFS4ERR_SYMLINK,                  |
|   | NFS4ERR_TOO_MANY_OPS, NFS4ERR_WRONG_TYPE         |

Table 2

**11.3. New Callback Operations and Their Valid Errors**

This section contains a table that gives the valid error returns for each new NFSv4.2 callback operation. The error code NFS4\_OK (indicating no error) is not listed but should be understood to be returnable by all new callback operations. The error values for all other callback operations are defined in [Section 15.3 of \[RFC5661\]](#).



Valid Error Returns for Each New Protocol Callback Operation

| Callback Operation | Errors   |
|--------------------|--|
| CB_OFFLOAD         | NFS4ERR_BADHANDLE, NFS4ERR_BADXDR,<br>NFS4ERR_BAD_STATEID, NFS4ERR_DELAY,<br>NFS4ERR_OP_NOT_IN_SESSION, NFS4ERR_REP_TOO_BIG,<br>NFS4ERR_REP_TOO_BIG_TO_CACHE, NFS4ERR_REQ_TOO_BIG,<br>NFS4ERR_RETRY_UNCACHED_REP, NFS4ERR_SERVERFAULT,<br>NFS4ERR_TOO_MANY_OPS |

Table 3

**12. New File Attributes**

**12.1. New RECOMMENDED Attributes - List and Definition References**

The list of new RECOMMENDED attributes appears in Table 4. The meaning of the columns of the table are:

Name: The name of the attribute.

Id: The number assigned to the attribute. In the event of conflicts between the assigned number and [NFSv42xdr], the latter is likely authoritative, but should be resolved with Errata to this document and/or [NFSv42xdr]. See [IESG08] for the Errata process.

Data Type: The XDR data type of the attribute.

Acc: Access allowed to the attribute.

R means read-only (GETATTR may retrieve, SETATTR may not set).

W means write-only (SETATTR may set, GETATTR may not retrieve).

R W means read/write (GETATTR may retrieve, SETATTR may set).

Defined in: The section of this specification that describes the attribute.





| Name             | Id | Data Type         | Acc | Defined in                     |
|------------------|----|-------------------|-----|--------------------------------|
| clone_blksize    | 77 | length4           | R   | <a href="#">Section 12.2.1</a> |
| space_freed      | 78 | length4           | R   | <a href="#">Section 12.2.2</a> |
| change_attr_type | 79 | change_attr_type4 | R   | <a href="#">Section 12.2.3</a> |
| sec_label        | 80 | sec_label4        | R W | <a href="#">Section 12.2.4</a> |

Table 4

## [12.2.](#) Attribute Definitions

### [12.2.1.](#) Attribute 77: clone\_blksize

The clone\_blksize attribute indicates the granularity of a CLONE operation.

### [12.2.2.](#) Attribute 78: space\_freed

space\_freed gives the number of bytes freed if the file is deleted. This attribute is read only and is of type length4. It is a per file attribute.

### [12.2.3.](#) Attribute 79: change\_attr\_type

<CODE BEGINS>

```
enum change_attr_type4 {
    NFS4_CHANGE_TYPE_IS_MONOTONIC_INCR        = 0,
    NFS4_CHANGE_TYPE_IS_VERSION_COUNTER      = 1,
    NFS4_CHANGE_TYPE_IS_VERSION_COUNTER_NOPNFS = 2,
    NFS4_CHANGE_TYPE_IS_TIME_METADATA        = 3,
    NFS4_CHANGE_TYPE_IS_UNDEFINED            = 4
};
```

<CODE ENDS>

change\_attr\_type is a per file system attribute which enables the NFSv4.2 server to provide additional information about how it expects the change attribute value to evolve after the file data, or metadata has changed. While [Section 5.4 of \[RFC5661\]](#) discusses per file system attributes, it is expected that the value of change\_attr\_type not depend on the value of "homogeneous" and only changes in the event of a migration.

NFS4\_CHANGE\_TYPE\_IS\_UNDEFINED: The change attribute does not take values that fit into any of these categories.



`NFS4_CHANGE_TYPE_IS_MONOTONIC_INCR`: The change attribute value MUST monotonically increase for every atomic change to the file attributes, data, or directory contents.

`NFS4_CHANGE_TYPE_IS_VERSION_COUNTER`: The change attribute value MUST be incremented by one unit for every atomic change to the file attributes, data, or directory contents. This property is preserved when writing to pNFS data servers.

`NFS4_CHANGE_TYPE_IS_VERSION_COUNTER_NOPNFS`: The change attribute value MUST be incremented by one unit for every atomic change to the file attributes, data, or directory contents. In the case where the client is writing to pNFS data servers, the number of increments is not guaranteed to exactly match the number of writes.

`NFS4_CHANGE_TYPE_IS_TIME_METADATA`: The change attribute is implemented as suggested in [\[RFC7530\]](#) in terms of the `time_metadata` attribute.

If either `NFS4_CHANGE_TYPE_IS_MONOTONIC_INCR`, `NFS4_CHANGE_TYPE_IS_VERSION_COUNTER`, or `NFS4_CHANGE_TYPE_IS_TIME_METADATA` are set, then the client knows at the very least that the change attribute is monotonically increasing, which is sufficient to resolve the question of which value is the most recent.

If the client sees the value `NFS4_CHANGE_TYPE_IS_TIME_METADATA`, then by inspecting the value of the `'time_delta'` attribute it additionally has the option of detecting rogue server implementations that use `time_metadata` in violation of the spec.

If the client sees `NFS4_CHANGE_TYPE_IS_VERSION_COUNTER`, it has the ability to predict what the resulting change attribute value should be after a `COMPOUND` containing a `SETATTR`, `WRITE`, or `CREATE`. This again allows it to detect changes made in parallel by another client. The value `NFS4_CHANGE_TYPE_IS_VERSION_COUNTER_NOPNFS` permits the same, but only if the client is not doing pNFS `WRITES`.

Finally, if the server does not support `change_attr_type` or if `NFS4_CHANGE_TYPE_IS_UNDEFINED` is set, then the server SHOULD make an effort to implement the change attribute in terms of the `time_metadata` attribute.



#### **12.2.4. Attribute 80: sec\_label**

```
<CODE BEGINS>

typedef uint32_t  policy4;

struct labelformat_spec4 {
    policy4 lfs_lfs;
    policy4 lfs_pi;
};

struct sec_label4 {
    labelformat_spec4    slai_lfs;
    opaque               slai_data<>;
};

<CODE ENDS>
```

The FATTR4\_SEC\_LABEL contains an array of two components with the first component being an LFS. It serves to provide the receiving end with the information necessary to translate the security attribute into a form that is usable by the endpoint. Label Formats assigned an LFS may optionally choose to include a Policy Identifier field to allow for complex policy deployments. The LFS and Label Format Registry are described in detail in [Quigley14]. The translation used to interpret the security attribute is not specified as part of the protocol as it may depend on various factors. The second component is an opaque section which contains the data of the attribute. This component is dependent on the MAC model to interpret and enforce.

In particular, it is the responsibility of the LFS specification to define a maximum size for the opaque section, slai\_data<>. When creating or modifying a label for an object, the client needs to be guaranteed that the server will accept a label that is sized correctly. By both client and server being part of a specific MAC model, the client will be aware of the size.

### **13. Operations: REQUIRED, RECOMMENDED, or OPTIONAL**

The following tables summarize the operations of the NFSv4.2 protocol and the corresponding designation of REQUIRED, RECOMMENDED, and OPTIONAL to implement or MUST NOT implement. The designation of MUST NOT implement is reserved for those operations that were defined in either NFSv4.0 or NFSv4.1 and MUST NOT be implemented in NFSv4.2.

For the most part, the REQUIRED, RECOMMENDED, or OPTIONAL designation for operations sent by the client is for the server implementation.



The client is generally required to implement the operations needed for the operating environment for which it serves. For example, a read-only NFSv4.2 client would have no need to implement the WRITE operation and is not required to do so.

The REQUIRED or OPTIONAL designation for callback operations sent by the server is for both the client and server. Generally, the client has the option of creating the backchannel and sending the operations on the fore channel that will be a catalyst for the server sending callback operations. A partial exception is CB\_RECALL\_SLOT; the only way the client can avoid supporting this operation is by not creating a backchannel.

Since this is a summary of the operations and their designation, there are subtleties that are not presented here. Therefore, if there is a question of the requirements of implementation, the operation descriptions themselves must be consulted along with other relevant explanatory text within this either specification or that of NFSv4.1 [[RFC5661](#)].

The abbreviations used in the second and third columns of the table are defined as follows.

REQ: REQUIRED to implement

REC: RECOMMENDED to implement

OPT: OPTIONAL to implement

MNI: MUST NOT implement

For the NFSv4.2 features that are OPTIONAL, the operations that support those features are OPTIONAL, and the server MUST return NFS4ERR\_NOTSUPP in response to the client's use of those operations, when those operations are not implemented by the server. If an OPTIONAL feature is supported, it is possible that a set of operations related to the feature become REQUIRED to implement. The third column of the table designates the feature(s) and if the operation is REQUIRED or OPTIONAL in the presence of support for the feature.

The OPTIONAL features identified and their abbreviations are as follows:

pNFS: Parallel NFS

FDELG: File Delegations





DDELG: Directory Delegations

COPYra: Intra-server Server Side Copy

COPYer: Inter-server Server Side Copy

ADB: Application Data Blocks

Operations

| Operation            | EOL, REQ, REC, OPT, or MNI | Feature (REQ, REC, or OPT) |
|----------------------|----------------------------|----------------------------|
| ALLOCATE             | OPT                        |                            |
| ACCESS               | REQ                        |                            |
| BACKCHANNEL_CTL      | REQ                        |                            |
| BIND_CONN_TO_SESSION | REQ                        |                            |
| CLONE                | OPT                        |                            |
| CLOSE                | REQ                        |                            |
| COMMIT               | REQ                        |                            |
| COPY                 | OPT                        | COPYer (REQ), COPYra (REQ) |
| COPY_NOTIFY          | OPT                        | COPYer (REQ)               |
| DEALLOCATE           | OPT                        |                            |
| CREATE               | REQ                        |                            |
| CREATE_SESSION       | REQ                        |                            |
| DELEGPURGE           | OPT                        | FDELG (REQ)                |
| DELEGRETURN          | OPT                        | FDELG, DDELG, pNFS (REQ)   |
| DESTROY_CLIENTID     | REQ                        |                            |
| DESTROY_SESSION      | REQ                        |                            |
| EXCHANGE_ID          | REQ                        |                            |
| FREE_STATEID         | REQ                        |                            |
| GETATTR              | REQ                        |                            |
| GETDEVICEINFO        | OPT                        | pNFS (REQ)                 |
| GETDEVICELIST        | MNI                        | pNFS (MNI)                 |
| GETFH                | REQ                        |                            |
| GET_DIR_DELEGATION   | OPT                        | DDELG (REQ)                |
| LAYOUTCOMMIT         | OPT                        | pNFS (REQ)                 |
| LAYOUTGET            | OPT                        | pNFS (REQ)                 |
| LAYOUTRETURN         | OPT                        | pNFS (REQ)                 |
| LAYOUTERROR          | OPT                        | pNFS (OPT)                 |
| LAYOUTSTATS          | OPT                        | pNFS (OPT)                 |
| LINK                 | OPT                        |                            |
| LOCK                 | REQ                        |                            |
| LOCKT                | REQ                        |                            |
| LOCKU                | REQ                        |                            |



|                     |     |                            |
|---------------------|-----|----------------------------|
| LOOKUP              | REQ |                            |
| LOOKUPP             | REQ |                            |
| NVERIFY             | REQ |                            |
| OFFLOAD_CANCEL      | OPT | COPYer (REQ), COPYra (REQ) |
| OFFLOAD_STATUS      | OPT | COPYer (REQ), COPYra (REQ) |
| OPEN                | REQ |                            |
| OPENATTR            | OPT |                            |
| OPEN_CONFIRM        | MNI |                            |
| OPEN_DOWNGRADE      | REQ |                            |
| PUTFH               | REQ |                            |
| PUTPUBFH            | REQ |                            |
| PUTROOTFH           | REQ |                            |
| READ                | REQ |                            |
| READDIR             | REQ |                            |
| READLINK            | OPT |                            |
| READ_PLUS           | OPT |                            |
| RECLAIM_COMPLETE    | REQ |                            |
| RELEASE_LOCKOWNER   | MNI |                            |
| REMOVE              | REQ |                            |
| RENAME              | REQ |                            |
| RENEW               | MNI |                            |
| RESTOREFH           | REQ |                            |
| SAVEFH              | REQ |                            |
| SECINFO             | REQ |                            |
| SECINFO_NO_NAME     | REC | pNFS file layout (REQ)     |
| SEEK                | OPT |                            |
| SEQUENCE            | REQ |                            |
| SETATTR             | REQ |                            |
| SETCLIENTID         | MNI |                            |
| SETCLIENTID_CONFIRM | MNI |                            |
| SET_SSV             | REQ |                            |
| TEST_STATEID        | REQ |                            |
| VERIFY              | REQ |                            |
| WANT_DELEGATION     | OPT | FDELG (OPT)                |
| WRITE               | REQ |                            |
| WRITE_SAME          | OPT | ADB (REQ)                  |



Callback Operations

| Operation               | REQ, REC, OPT,<br>or MNI | Feature (REQ, REC,<br>or OPT) |
|-------------------------|--------------------------|-------------------------------|
| CB_OFFLOAD              | OPT                      | COPYer (REQ), COPYra (REQ)    |
| CB_GETATTR              | OPT                      | FDELG (REQ)                   |
| CB_LAYOUTRECALL         | OPT                      | pNFS (REQ)                    |
| CB_NOTIFY               | OPT                      | DDELG (REQ)                   |
| CB_NOTIFY_DEVICEID      | OPT                      | pNFS (OPT)                    |
| CB_NOTIFY_LOCK          | OPT                      |                               |
| CB_PUSH_DELEG           | OPT                      | FDELG (OPT)                   |
| CB_RECALL               | OPT                      | FDELG, DDELG, pNFS (REQ)      |
| CB_RECALL_ANY           | OPT                      | FDELG, DDELG, pNFS (REQ)      |
| CB_RECALL_SLOT          | REQ                      |                               |
| CB_RECALLABLE_OBJ_AVAIL | OPT                      | DDELG, pNFS (REQ)             |
| CB_SEQUENCE             | OPT                      | FDELG, DDELG, pNFS (REQ)      |
| CB_WANTS_CANCELLED      | OPT                      | FDELG, DDELG, pNFS (REQ)      |

**14. Modifications to NFSv4.1 Operations**

**14.1. Operation 42: EXCHANGE\_ID - Instantiate Client ID**

**14.1.1. ARGUMENT**

<CODE BEGINS>

```

/* new */
const EXCHGID4_FLAG_SUPP_FENCE_OPS = 0x00000004;

```

<CODE ENDS>

**14.1.2. RESULT**

Unchanged

**14.1.3. MOTIVATION**

Enterprise applications require guarantees that an operation has either aborted or completed. NFSv4.1 provides this guarantee as long as the session is alive: simply send a SEQUENCE operation on the same



slot with a new sequence number, and the successful return of SEQUENCE indicates the previous operation has completed. However, if the session is lost, there is no way to know when any in progress operations have aborted or completed. In hindsight, the NFSv4.1 specification should have mandated that DESTROY\_SESSION either abort or complete all outstanding operations.

#### **14.1.4. DESCRIPTION**

A client SHOULD request the EXCHGID4\_FLAG\_SUPP\_FENCE\_OPS capability when it sends an EXCHANGE\_ID operation. The server SHOULD set this capability in the EXCHANGE\_ID reply whether the client requests it or not. It is the server's return that determines whether this capability is in effect. When it is in effect, the following will occur:

- o The server will not reply to any DESTROY\_SESSION invoked with the client ID until all operations in progress are completed or aborted.
- o The server will not reply to subsequent EXCHANGE\_ID invoked on the same client owner with a new verifier until all operations in progress on the client ID's session are completed or aborted.
- o In implementations where the NFS server is deployed as a cluster, it does support client ID trunking, and the EXCHGID4\_FLAG\_SUPP\_FENCE\_OPS capability is enabled, then a session ID created on one node of the storage cluster MUST be destroyable via DESTROY\_SESSION. In addition, DESTROY\_CLIENTID and an EXCHANGE\_ID with a new verifier affects all sessions regardless what node the sessions were created on.

### **14.2. Operation 48: GETDEVICELIST - Get All Device Mappings for a File System**

#### **14.2.1. ARGUMENT**

<CODE BEGINS>





```

struct GETDEVICELIST4args {
    /* CURRENT_FH: object belonging to the file system */
    layouttype4      gdla_layout_type;

    /* number of deviceIDs to return */
    count4           gdla_maxdevices;

    nfs_cookie4      gdla_cookie;
    verifier4        gdla_cookieverf;
};

```

<CODE ENDS>

#### **14.2.2. RESULT**

<CODE BEGINS>

```

struct GETDEVICELIST4resok {
    nfs_cookie4      gdlr_cookie;
    verifier4        gdlr_cookieverf;
    deviceid4        gdlr_deviceid_list<>;
    bool             gdlr_eof;
};

union GETDEVICELIST4res switch (nfsstat4 gdlr_status) {
case NFS4_OK:
    GETDEVICELIST4resok      gdlr_resok4;
default:
    void;
};

```

<CODE ENDS>

#### **14.2.3. MOTIVATION**

The GETDEVICELIST operation was introduced in [[RFC5661](#)] specifically to request a list of devices at filesystem mount time from block layout type servers. However use of the GETDEVICELIST operation introduces a race condition versus notification about changes to pNFS device IDs as provided by CB\_NOTIFY\_DEVICEID. Implementation experience with block layout servers has shown there is no need for GETDEVICELIST. Clients have to be able to request new devices using GETDEVICEINFO at any time in response either to a new deviceid in LAYOUTGET results or to the CB\_NOTIFY\_DEVICEID callback operation.



#### **14.2.4. DESCRIPTION**

Clients and servers MUST NOT implement the GETDEVICELIST operation.

### **15. NFSv4.2 Operations**

#### **15.1. Operation 59: ALLOCATE - Reserve Space in A Region of a File**

##### **15.1.1. ARGUMENT**

<CODE BEGINS>

```
struct ALLOCATE4args {
    /* CURRENT_FH: file */
    stateid4      aa_stateid;
    offset4       aa_offset;
    length4       aa_length;
};
```

<CODE ENDS>

##### **15.1.2. RESULT**

<CODE BEGINS>

```
struct ALLOCATE4res {
    nfsstat4      ar_status;
};
```

<CODE ENDS>

##### **15.1.3. DESCRIPTION**

Whenever a client wishes to reserve space for a region in a file it calls the ALLOCATE operation with the current filehandle set to the filehandle of the file in question, and the start offset and length in bytes of the region set in aa\_offset and aa\_length respectively.

The server will ensure that backing blocks are reserved to the region specified by aa\_offset and aa\_length, and that no future writes into this region will return NFS4ERR\_NOСПC. If the region lies partially or fully outside the current file size the file size will be set to aa\_offset + aa\_length implicitly. If the server cannot guarantee this, it must return NFS4ERR\_NOСПC.

The ALLOCATE operation can also be used to extend the size of a file if the region specified by aa\_offset and aa\_length extends beyond the



current file size. In that case any data outside of the previous file size will return zeroes when read before data is written to it.

It is not required that the server allocate the space to the file before returning success. The allocation can be deferred, however, it must be guaranteed that it will not fail for lack of space. The deferral does not result in an asynchronous reply.

The ALLOCATE operation will result in the `space_used` attribute and `space_freed` attributes being increased by the number of bytes reserved unless they were previously reserved or written and not shared.

## **15.2. Operation 60: COPY - Initiate a server-side copy**

### **15.2.1. ARGUMENT**

<CODE BEGINS>

```
struct COPY4args {
    /* SAVED_FH: source file */
    /* CURRENT_FH: destination file */
    stateid4      ca_src_stateid;
    stateid4      ca_dst_stateid;
    offset4       ca_src_offset;
    offset4       ca_dst_offset;
    length4       ca_count;
    bool          ca_consecutive;
    bool          ca_synchronous;
    netloc4       ca_source_server<>;
};
```

<CODE ENDS>

### **15.2.2. RESULT**

<CODE BEGINS>

```
struct write_response4 {
    stateid4      wr_callback_id<1>;
    length4       wr_count;
    stable_how4   wr_committed;
    verifier4     wr_writeverf;
};
```



```
struct copy_requirements4 {
    bool          cr_consecutive;
    bool          cr_synchronous;
};

struct COPY4resok {
    write_response4      cr_response;
    copy_requirements4  cr_requirements;
};

union COPY4res switch (nfsstat4 cr_status) {
case NFS4_OK:
    COPY4resok          cr_resok4;
case NFS4ERR_OFFLOAD_NO_REQS:
    copy_requirements4  cr_requirements;
default:
    void;
};

<CODE ENDS>
```

### **15.2.3. DESCRIPTION**

The COPY operation is used for both intra-server and inter-server copies. In both cases, the COPY is always sent from the client to the destination server of the file copy. The COPY operation requests that a range in the file specified by `SAVED_FH` is copied to a range in the file specified by `CURRENT_FH`.

Both `SAVED_FH` and `CURRENT_FH` must be regular files. If either `SAVED_FH` or `CURRENT_FH` is not a regular file, the operation MUST fail and return `NFS4ERR_WRONG_TYPE`.

`SAVED_FH` and `CURRENT_FH` must be different files. If `SAVED_FH` and `CURRENT_FH` refer to the same file, the operation MUST fail with `NFS4ERR_INVALID`.

If the request is for an inter-server-to-server copy, the source-fh is a filehandle from the source server and the compound procedure is being executed on the destination server. In this case, the source-fh is a foreign filehandle on the server receiving the COPY request. If either `PUTFH` or `SAVEFH` checked the validity of the filehandle, the operation would likely fail and return `NFS4ERR_STALE`.

If a server supports the inter-server-to-server COPY feature, a `PUTFH` followed by a `SAVEFH` MUST NOT return `NFS4ERR_STALE` for either operation. These restrictions do not pose substantial difficulties for servers. `CURRENT_FH` and `SAVED_FH` may be validated in the context





of the operation referencing them and an NFS4ERR\_STALE error returned for an invalid file handle at that point.

The `ca_dst_stateid` MUST refer to a stateid that is valid for a WRITE operation and follows the rules for stateids in Sections [8.2.5](#) and 18.32.3 of [[RFC5661](#)]. For an inter-server copy, the `ca_src_stateid` MUST be the `cnr_stateid` returned from the earlier COPY\_NOTIFY operation, while for an intra-server copy `ca_src_stateid` MUST refer to a stateid that is valid for a READ operations and follows the rules for stateids in Sections [8.2.5](#) and [18.22.3](#) of [[RFC5661](#)]. If either stateid is invalid, then the operation MUST fail.

The `ca_src_offset` is the offset within the source file from which the data will be read, the `ca_dst_offset` is the offset within the destination file to which the data will be written, and the `ca_count` is the number of bytes that will be copied. An offset of 0 (zero) specifies the start of the file. A count of 0 (zero) requests that all bytes from `ca_src_offset` through EOF be copied to the destination. If concurrent modifications to the source file overlap with the source file region being copied, the data copied may include all, some, or none of the modifications. The client can use standard NFS operations (e.g., OPEN with OPEN4\_SHARE\_DENY\_WRITE or mandatory byte range locks) to protect against concurrent modifications if the client is concerned about this. If the source file's end of file is being modified in parallel with a copy that specifies a count of 0 (zero) bytes, the amount of data copied is implementation dependent (clients may guard against this case by specifying a non-zero count value or preventing modification of the source file as mentioned above).

If the source offset or the source offset plus count is greater than the size of the source file, the operation MUST fail with NFS4ERR\_INVALID. The destination offset or destination offset plus count may be greater than the size of the destination file. This allows for the client to issue parallel copies to implement operations such as

```
<CODE BEGINS>
```

```
% cat file1 file2 file3 file4 > dest
```

```
<CODE ENDS>
```

If the `ca_source_server` list is specified, then this is an inter-server copy operation and the source file is on a remote server. The client is expected to have previously issued a successful COPY\_NOTIFY request to the remote source server. The `ca_source_server` list MUST be the same as the COPY\_NOTIFY response's `cnr_source_server` list. If



the client includes the entries from the COPY\_NOTIFY response's `cnr_source_server` list in the `ca_source_server` list, the source server can indicate a specific copy protocol for the destination server to use by returning a URL, which specifies both a protocol service and server name. Server-to-server copy protocol considerations are described in [Section 4.7](#) and [Section 4.10.1](#).

If `ca_consecutive` is set, then the client has specified that the copy protocol selected MUST copy bytes in consecutive order from `ca_src_offset` to `ca_count`. If the destination server cannot meet this requirement, then it MUST return an error of `NFS4ERR_OFFLOAD_NO_REQS` and set `cr_consecutive` to be false. Likewise, if `ca_synchronous` is set, then the client has required that the copy protocol selected MUST perform a synchronous copy. If the destination server cannot meet this requirement, then it MUST return an error of `NFS4ERR_OFFLOAD_NO_REQS` and set `cr_synchronous` to be false.

If both are set by the client, then the destination SHOULD try to determine if it can respond to both requirements at the same time. If it cannot make that determination, it must set to false the one it can and set to true the other. The client, upon getting an `NFS4ERR_OFFLOAD_NO_REQS` error, has to examine both `cr_consecutive` and `cr_synchronous` against the respective values of `ca_consecutive` and `ca_synchronous` to determine the possible requirement not met. It MUST be prepared for the destination server not being able to determine both requirements at the same time.

Upon receiving the `NFS4ERR_OFFLOAD_NO_REQS` error, the client has to determine if it wants to either re-request the copy with a relaxed set of requirements or if it wants to revert to manually copying the data. If it decides to manually copy the data and this is a remote copy, then the client is responsible for informing the source that the earlier COPY\_NOTIFY is no longer valid by sending it an `OFFLOAD_CANCEL`.

If the operation does not result in an immediate failure, the server will return `NFS4_OK`.

If the `wr_callback_id` is returned, this indicates that an asynchronous COPY operation was initiated and a `CB_OFFLOAD` callback will deliver the final results of the operation. The `wr_callback_id` stateid is termed a copy stateid in this context. The server is given the option of returning the results in a callback because the data may require a relatively long period of time to copy.



If no `wr_callback_id` is returned, the operation completed synchronously and no callback will be issued by the server. The completion status of the operation is indicated by `cr_status`.

If the copy completes successfully, either synchronously or asynchronously, the data copied from the source file to the destination file MUST appear identical to the NFS client. However, the NFS server's on disk representation of the data in the source file and destination file MAY differ. For example, the NFS server might encrypt, compress, deduplicate, or otherwise represent the on disk data in the source and destination file differently.

If a failure does occur for a synchronous copy, `wr_count` will be set to the number of bytes copied to the destination file before the error occurred. If `cr_consecutive` is true, then the bytes were copied in order. If the failure occurred for an asynchronous copy, then the client will have gotten the notification of the consecutive copy order when it got the copy stateid. It will be able to determine the bytes copied from the `coa_bytes_copied` in the `CB_OFFLOAD` argument.

In either case, if `cr_consecutive` was not true, there is no assurance as to exactly which bytes in the range were copied. The client MUST assume that there exists a mixture of the original contents of the range and the new bytes. If the COPY wrote past the end of the file on the destination, then the last byte written to will determine the new file size. The contents of any block not written to and past the original size of the file will be as if a normal WRITE extended the file.

### **15.3. Operation 61: COPY\_NOTIFY - Notify a source server of a future copy**

#### **15.3.1. ARGUMENT**

<CODE BEGINS>

```
struct COPY_NOTIFY4args {
    /* CURRENT_FH: source file */
    stateid4      cna_src_stateid;
    netloc4       cna_destination_server;
};
```

<CODE ENDS>



### **15.3.2. RESULT**

<CODE BEGINS>

```
struct COPY_NOTIFY4resok {
    nfstime4      cnr_lease_time;
    stateid4      cnr_stateid;
    netloc4       cnr_source_server<>;
};

union COPY_NOTIFY4res switch (nfsstat4 cnr_status) {
case NFS4_OK:
    COPY_NOTIFY4resok      resok4;
default:
    void;
};
```

<CODE ENDS>

### **15.3.3. DESCRIPTION**

This operation is used for an inter-server copy. A client sends this operation in a COMPOUND request to the source server to authorize a destination server identified by `cna_destination_server` to read the file specified by `CURRENT_FH` on behalf of the given user.

The `cna_src_stateid` MUST refer to either open or locking states provided earlier by the server. If it is invalid, then the operation MUST fail.

The `cna_destination_server` MUST be specified using the `netloc4` network location format. The server is not required to resolve the `cna_destination_server` address before completing this operation.

If this operation succeeds, the source server will allow the `cna_destination_server` to copy the specified file on behalf of the given user as long as both of the following conditions are met:

- o The destination server begins reading the source file before the `cnr_lease_time` expires. If the `cnr_lease_time` expires while the destination server is still reading the source file, the destination server is allowed to finish reading the file.
- o The client has not issued a `OFFLOAD_CANCEL` for the same combination of user, filehandle, and destination server.





The `cnr_lease_time` is chosen by the source server. A `cnr_lease_time` of 0 (zero) indicates an infinite lease. To avoid the need for synchronized clocks, copy lease times are granted by the server as a time delta. To renew the copy lease time the client should resend the same copy notification request to the source server.

The `cnr_stateid` is a copy stateid which uniquely describes the state needed on the source server to track the proposed copy. As defined in [Section 8.2 of \[RFC5661\]](#), a stateid is tied to the current filehandle and if the same stateid is presented by two different clients, it may refer to different state. As the source does not know which netloc4 network location the destination might use to establish the copy operation, it can use the `cnr_stateid` to identify that the destination is operating on behalf of the client. Thus the source server MUST construct copy stateids such that they are distinct from all other stateids handed out to clients. These copy stateids MUST denote the same set of locks as each of the earlier delegation, locking, and open states for the client on the given file (see [Section 4.4.1](#)).

A successful response will also contain a list of netloc4 network location formats called `cnr_source_server`, on which the source is willing to accept connections from the destination. These might not be reachable from the client and might be located on networks to which the client has no connection.

For a copy only involving one server (the source and destination are on the same server), this operation is unnecessary.

#### **[15.4](#). Operation 62: DEALLOCATE - Unreserve Space in a Region of a File**

##### **[15.4.1](#). ARGUMENT**

<CODE BEGINS>

```
struct DEALLOCATE4args {
    /* CURRENT_FH: file */
    stateid4      da_stateid;
    offset4      da_offset;
    length4      da_length;
};
```

<CODE ENDS>



### **15.4.2. RESULT**

<CODE BEGINS>

```
struct DEALLOCATE4res {
    nfsstat4      dr_status;
};
```

<CODE ENDS>

### **15.4.3. DESCRIPTION**

Whenever a client wishes to unreserve space for a region in a file it calls the DEALLOCATE operation with the current filehandle set to the filehandle of the file in question, and the start offset and length in bytes of the region set in da\_offset and da\_length respectively. If no space was allocated or reserved for all or parts of the region, the DEALLOCATE operation will have no effect for the region that already is in unreserved state. All further reads from the region passed to DEALLOCATE MUST return zeros until overwritten. The filehandle specified must be that of a regular file.

Situations may arise where da\_offset and/or da\_offset + da\_length will not be aligned to a boundary for which the server does allocations or deallocations. For most file systems, this is the block size of the file system. In such a case, the server can deallocate as many bytes as it can in the region. The blocks that cannot be deallocated MUST be zeroed.

DEALLOCATE will result in the space\_used attribute being decreased by the number of bytes that were deallocated. The space\_freed attribute may or may not decrease, depending on the support and whether the blocks backing the specified range were shared or not. The size attribute will remain unchanged.

## **15.5. Operation 63: IO\_ADVISE - Application I/O access pattern hints**

### **15.5.1. ARGUMENT**

<CODE BEGINS>



```
enum IO_ADVISE_type4 {
    IO_ADVISE4_NORMAL                = 0,
    IO_ADVISE4_SEQUENTIAL            = 1,
    IO_ADVISE4_SEQUENTIAL_BACKWARDS = 2,
    IO_ADVISE4_RANDOM                = 3,
    IO_ADVISE4_WILLNEED              = 4,
    IO_ADVISE4_WILLNEED_OPPORTUNISTIC = 5,
    IO_ADVISE4_DONTNEED              = 6,
    IO_ADVISE4_NOREUSE               = 7,
    IO_ADVISE4_READ                  = 8,
    IO_ADVISE4_WRITE                 = 9,
    IO_ADVISE4_INIT_PROXIMITY        = 10
};
```

```
struct IO_ADVISE4args {
    /* CURRENT_FH: file */
    stateid4      iaa_stateid;
    offset4       iaa_offset;
    length4       iaa_count;
    bitmap4       iaa_hints;
};
```

<CODE ENDS>

### **15.5.2. RESULT**

<CODE BEGINS>

```
struct IO_ADVISE4resok {
    bitmap4 ior_hints;
};
```

```
union IO_ADVISE4res switch (nfsstat4 ior_status) {
    case NFS4_OK:
        IO_ADVISE4resok resok4;
    default:
        void;
};
```

<CODE ENDS>



### **15.5.3. DESCRIPTION**

The IO\_ADVISE operation sends an I/O access pattern hint to the server for the owner of the stateid for a given byte range specified by iar\_offset and iar\_count. The byte range specified by iaa\_offset and iaa\_count need not currently exist in the file, but the iaa\_hints will apply to the byte range when it does exist. If iaa\_count is 0, all data following iaa\_offset is specified. The server MAY ignore the advice.

The following are the allowed hints for a stateid holder:

IO\_ADVISE4\_NORMAL There is no advice to give, this is the default behavior.

IO\_ADVISE4\_SEQUENTIAL Expects to access the specified data sequentially from lower offsets to higher offsets.

IO\_ADVISE4\_SEQUENTIAL\_BACKWARDS Expects to access the specified data sequentially from higher offsets to lower offsets.

IO\_ADVISE4\_RANDOM Expects to access the specified data in a random order.

IO\_ADVISE4\_WILLNEED Expects to access the specified data in the near future.

IO\_ADVISE4\_WILLNEED\_OPPORTUNISTIC Expects to possibly access the data in the near future. This is a speculative hint, and therefore the server should prefetch data or indirect blocks only if it can be done at a marginal cost.

IO\_ADVISE\_DONTNEED Expects that it will not access the specified data in the near future.

IO\_ADVISE\_NOREUSE Expects to access the specified data once and then not reuse it thereafter.

IO\_ADVISE4\_READ Expects to read the specified data in the near future.

IO\_ADVISE4\_WRITE Expects to write the specified data in the near future.

IO\_ADVISE4\_INIT\_PROXIMITY Informs the server that the data in the byte range remains important to the client.





Since `IO_ADVISE` is a hint, a server SHOULD NOT return an error and invalidate a entire Compound request if one of the sent hints in `iar_hints` is not supported by the server. Also, the server MUST NOT return an error if the client sends contradictory hints to the server, e.g., `IO_ADVISE4_SEQUENTIAL` and `IO_ADVISE4_RANDOM` in a single `IO_ADVISE` operation. In these cases, the server MUST return success and a `ior_hints` value that indicates the hint it intends to implement. This may mean simply returning `IO_ADVISE4_NORMAL`.

The `ior_hints` returned by the server is primarily for debugging purposes since the server is under no obligation to carry out the hints that it describes in the `ior_hints` result. In addition, while the server may have intended to implement the hints returned in `ior_hints`, as time progresses, the server may need to change its handling of a given file due to several reasons including, but not limited to, memory pressure, additional `IO_ADVISE` hints sent by other clients, and heuristically detected file access patterns.

The server MAY return different advice than what the client requested. If it does, then this might be due to one of several conditions, including, but not limited to another client advising of a different I/O access pattern; a different I/O access pattern from another client that that the server has heuristically detected; or the server is not able to support the requested I/O access pattern, perhaps due to a temporary resource limitation.

Each issuance of the `IO_ADVISE` operation overrides all previous issuances of `IO_ADVISE` for a given byte range. This effectively follows a strategy of last hint wins for a given stateid and byte range.

Clients should assume that hints included in an `IO_ADVISE` operation will be forgotten once the file is closed.

#### **15.5.4. IMPLEMENTATION**

The NFS client may choose to issue an `IO_ADVISE` operation to the server in several different instances.

The most obvious is in direct response to an application's execution of `posix_fadvise()`. In this case, `IO_ADVISE4_WRITE` and `IO_ADVISE4_READ` may be set based upon the type of file access specified when the file was opened.



#### **15.5.5. IO\_ADVISE4\_INIT\_PROXIMITY**

The IO\_ADVISE4\_INIT\_PROXIMITY hint is non-posix in origin and can be used to convey that the client has recently accessed the byte range in its own cache. I.e., it has not accessed it on the server, but it has locally. When the server reaches resource exhaustion, knowing which data is more important allows the server to make better choices about which data to, for example purge from a cache, or move to secondary storage. It also informs the server which delegations are more important, since if delegations are working correctly, once delegated to a client and the client has read the content for that byte range, a server might never receive another read request for that byte range.

The IO\_ADVISE4\_INIT\_PROXIMITY hint can also be used in a pNFS setting to let the client inform the metadata server as to the I/O statistics between the client and the storage devices. The metadata server is then free to use this information about client I/O to optimize the data storage location.

This hint is also useful in the case of NFS clients which are network booting from a server. If the first client to be booted sends this hint, then it keeps the cache warm for the remaining clients.

#### **15.5.6. pNFS File Layout Data Type Considerations**

The IO\_ADVISE considerations for pNFS are very similar to the COMMIT considerations for pNFS. That is, as with COMMIT, some NFS server implementations prefer IO\_ADVISE be done on the DS, and some prefer it be done on the MDS.

For the file's layout type, it is proposed that NFSv4.2 include an additional hint NFL42\_CARE\_IO\_ADVISE\_THRU\_MDS which is valid only on metadata servers running NFSv4.2 or higher. Any file's layout obtained from a NFSv4.1 metadata server MUST NOT have NFL42\_UFLG\_IO\_ADVISE\_THRU\_MDS set. Any file's layout obtained with a NFSv4.2 metadata server MAY have NFL42\_UFLG\_IO\_ADVISE\_THRU\_MDS set. However, if the layout utilizes NFSv4.1 storage devices, the IO\_ADVISE operation cannot be sent to them.

If NFL42\_UFLG\_IO\_ADVISE\_THRU\_MDS is set, the client MUST send the IO\_ADVISE operation to the MDS in order for it to be honored by the DS. Once the MDS receives the IO\_ADVISE operation, it will communicate the advice to each DS.

If NFL42\_UFLG\_IO\_ADVISE\_THRU\_MDS is not set, then the client SHOULD send an IO\_ADVISE operation to the appropriate DS for the specified byte range. While the client MAY always send IO\_ADVISE to the MDS,



if the server has not set `NFL42_UFLG_IO_ADVISE_THRU_MDS`, the client should expect that such an `IO_ADVISE` is futile. Note that a client SHOULD use the same set of arguments on each `IO_ADVISE` sent to a DS for the same open file reference.

The server is not required to support different advice for different DS's with the same open file reference.

#### **15.5.6.1. Dense and Sparse Packing Considerations**

The `IO_ADVISE` operation MUST use the `iar_offset` and byte range as dictated by the presence or absence of `NFL4_UFLG_DENSE`.

E.g., if `NFL4_UFLG_DENSE` is present, and a `READ` or `WRITE` to the DS for `iaa_offset 0` really means `iaa_offset 10000` in the logical file, then an `IO_ADVISE` for `iaa_offset 0` means `iaa_offset 10000`.

E.g., if `NFL4_UFLG_DENSE` is absent, then a `READ` or `WRITE` to the DS for `iaa_offset 0` really means `iaa_offset 0` in the logical file, then an `IO_ADVISE` for `iaa_offset 0` means `iaa_offset 0` in the logical file.

E.g., if `NFL4_UFLG_DENSE` is present, the stripe unit is 1000 bytes and the stripe count is 10, and the dense DS file is serving `iar_offset 0`. A `READ` or `WRITE` to the DS for `iaa_offsets 0, 1000, 2000, and 3000`, really mean `iaa_offsets 10000, 20000, 30000, and 40000` (implying a stripe count of 10 and a stripe unit of 1000), then an `IO_ADVISE` sent to the same DS with an `iaa_offset` of 500, and an `iaa_count` of 3000 means that the `IO_ADVISE` applies to these byte ranges of the dense DS file:

- 500 to 999
- 1000 to 1999
- 2000 to 2999
- 3000 to 3499

I.e., the contiguous range 500 to 3499 as specified in `IO_ADVISE`.

It also applies to these byte ranges of the logical file:

- 10500 to 10999 (500 bytes)
- 20000 to 20999 (1000 bytes)
- 30000 to 30999 (1000 bytes)
- 40000 to 40499 (500 bytes)
- (total                    3000 bytes)

E.g., if `NFL4_UFLG_DENSE` is absent, the stripe unit is 250 bytes, the stripe count is 4, and the sparse DS file is serving `iaa_offset 0`. Then a `READ` or `WRITE` to the DS for `iaa_offsets 0, 1000, 2000, and`



3000, really means `iaa_offsets` 0, 1000, 2000, and 3000 in the logical file, keeping in mind that on the DS file, byte ranges 250 to 999, 1250 to 1999, 2250 to 2999, and 3250 to 3999 are not accessible. Then an `IO_ADVISE` sent to the same DS with an `iaa_offset` of 500, and a `iaa_count` of 3000 means that the `IO_ADVISE` applies to these byte ranges of the logical file and the sparse DS file:

```

- 500 to 999 (500 bytes) - no effect
- 1000 to 1249 (250 bytes) - effective
- 1250 to 1999 (750 bytes) - no effect
- 2000 to 2249 (250 bytes) - effective
- 2250 to 2999 (750 bytes) - no effect
- 3000 to 3249 (250 bytes) - effective
- 3250 to 3499 (250 bytes) - no effect
(subtotal      2250 bytes) - no effect
(subtotal      750 bytes) - effective
(grand total   3000 bytes) - no effect + effective

```

If neither of the flags `NFL42_UFLG_IO_ADVISE_THRU_MDS` and `NFL4_UFLG_DENSE` are set in the layout, then any `IO_ADVISE` request sent to the data server with a byte range that overlaps stripe unit that the data server does not serve MUST NOT result in the status `NFS4ERR_PNFS_IO_HOLE`. Instead, the response SHOULD be successful and if the server applies `IO_ADVISE` hints on any stripe units that overlap with the specified range, those hints SHOULD be indicated in the response.

## **15.6. Operation 64: LAYOUTERROR - Provide Errors for the Layout**

### **15.6.1. ARGUMENT**

<CODE BEGINS>

```

struct device_error4 {
    deviceid4      de_deviceid;
    nfsstat4      de_status;
    nfs_opnum4    de_opnum;
};

```





```
struct LAYOUTERROR4args {
    /* CURRENT_FH: file */
    offset4          lea_offset;
    length4         lea_length;
    stateid4        lea_stateid;
    device_error4   lea_errors<>;
};

<CODE ENDS>
```

### **15.6.2. RESULT**

```
<CODE BEGINS>

struct LAYOUTERROR4res {
    nfsstat4        ler_status;
};

<CODE ENDS>
```

### **15.6.3. DESCRIPTION**

The client can use LAYOUTERROR to inform the metadata server about errors in its interaction with the layout represented by the current filehandle, client ID (derived from the session ID in the preceding SEQUENCE operation), byte-range (lea\_offset + lea\_length), and lea\_stateid.

Each individual device\_error4 describes a single error associated with a storage device, which is identified via de\_deviceid. If the Layout Type supports NFSv4 operations, then the operation which returned the error is identified via de\_opnum. If the Layout Type does not support NFSv4 operations, then it MAY chose to either map the operation onto one of the allowed operations which can be sent to a storage device with the File Layout Type (see [Section 3.3](#)) or it can signal no support for operations by marking de\_opnum with the ILLEGAL operation. Finally the NFS error value (nfsstat4) encountered is provided via de\_status and may consist of the following error codes:

NFS4ERR\_NXIO: The client was unable to establish any communication with the storage device.

NFS4ERR\_\*: The client was able to establish communication with the storage device and is returning one of the allowed error codes for the operation denoted by de\_opnum.



Note that while the metadata server may return an error associated with the layout stateid or the open file, it MUST NOT return an error in the processing of the errors. If LAYOUTERROR is in a compound before LAYOUTRETURN, it MUST NOT introduce an error other than what LAYOUTRETURN would already encounter.

#### **15.6.4. IMPLEMENTATION**

There are two broad classes of errors, transient and persistent. The client SHOULD strive to only use this new mechanism to report persistent errors. It MUST be able to deal with transient issues by itself. Also, while the client might consider an issue to be persistent, it MUST be prepared for the metadata server to consider such issues to be transient. A prime example of this is if the metadata server fences off a client from either a stateid or a filehandle. The client will get an error from the storage device and might relay either NFS4ERR\_ACCESS or NFS4ERR\_BAD\_STATEID back to the metadata server, with the belief that this is a hard error. If the metadata server is informed by the client that there is an error, it can safely ignore that. For it, the mission is accomplished in that the client has returned a layout that the metadata server had most likely recalled.

The client might also need to inform the metadata server that it cannot reach one or more of the storage devices. While the metadata server can detect the connectivity of both of these paths:

- o metadata server to storage device
- o metadata server to client

it cannot determine if the client and storage device path is working. As with the case of the storage device passing errors to the client, it must be prepared for the metadata server to consider such outages as being transitory.

Clients are expected to tolerate transient storage device errors, and hence clients SHOULD NOT use the LAYOUTERROR error handling for device access problems that may be transient. The methods by which a client decides whether a device access problem is transient vs persistent are implementation-specific, but may include retrying I/Os to a data server under appropriate conditions.

When an I/O fails to a storage device, the client SHOULD retry the failed I/O via the metadata server. In this situation, before retrying the I/O, the client SHOULD return the layout, or the affected portion thereof, and SHOULD indicate which storage device or devices was problematic. The client needs to do this when the



storage device is being unresponsive in order to fence off any failed write attempts, and ensure that they do not end up overwriting any later data being written through the metadata server. If the client does not do this, the metadata server MAY issue a layout recall callback in order to perform the retried I/O.

The client needs to be cognizant that since this error handling is optional in the metadata server, the metadata server may silently ignore this functionality. Also, as the metadata server may consider some issues the client reports to be expected, the client might find it difficult to detect a metadata server which has not implemented error handling via LAYOUTERROR.

If an metadata server is aware that a storage device is proving problematic to a client, the metadata server SHOULD NOT include that storage device in any pNFS layouts sent to that client. If the metadata server is aware that a storage device is affecting many clients, then the metadata server SHOULD NOT include that storage device in any pNFS layouts sent out. If a client asks for a new layout for the file from the metadata server, it MUST be prepared for the metadata server to return that storage device in the layout. The metadata server might not have any choice in using the storage device, i.e., there might only be one possible layout for the system. Also, in the case of existing files, the metadata server might have no choice in which storage devices to hand out to clients.

The metadata server is not required to indefinitely retain per-client storage device error information. An metadata server is also not required to automatically reinstate use of a previously problematic storage device; administrative intervention may be required instead.

## **15.7. Operation 65: LAYOUTSTATS - Provide Statistics for the Layout**

### **15.7.1. ARGUMENT**

<CODE BEGINS>

```
struct layoutupdate4 {
    layouttype4      lou_type;
    opaque           lou_body<>;
};

struct io_info4 {
    uint64_t         ii_count;
    uint64_t         ii_bytes;
};
```



```
struct LAYOUTSTATS4args {
    /* CURRENT_FH: file */
    offset4          lsa_offset;
    length4         lsa_length;
    stateid4        lsa_stateid;
    io_info4        lsa_read;
    io_info4        lsa_write;
    deviceid4       lsa_deviceid;
    layoutupdate4   lsa_layoutupdate;
};
```

<CODE ENDS>

### **15.7.2. RESULT**

<CODE BEGINS>

```
struct LAYOUTSTATS4res {
    nfsstat4      lsr_status;
};
```

<CODE ENDS>

### **15.7.3. DESCRIPTION**

The client can use LAYOUTSTATS to inform the metadata server about its interaction with the layout represented by the current filehandle, client ID (derived from the session ID in the preceding SEQUENCE operation), byte-range (`lsa_offset` and `lsa_length`), and `lsa_stateid`. `lsa_read` and `lsa_write` allow for non-Layout Type specific statistics to be reported. `lsa_deviceid` allows the client to specify to which storage device the statistics apply. The remaining information the client is presenting is specific to the Layout Type and presented in the `lsa_layoutupdate` field. Each Layout Type MUST define the contents of `lsa_layoutupdate` in their respective specifications.

LAYOUTSTATS can be combined with IO\_ADVISE (see [Section 15.5](#)) to augment the decision making process of how the metadata server handles a file. I.e., IO\_ADVISE lets the server know that a byte range has a certain characteristic, but not necessarily the intensity of that characteristic.

The statistics are cumulative, i.e., multiple LAYOUTSTATS updates can be in flight at the same time. The metadata server can examine the packet's timestamp to order the different calls. The first





LAYOUTSTATS sent by the client SHOULD be from the opening of the file. The choice of how often to update the metadata server is made by the client.

Note that while the metadata server may return an error associated with the layout stateid or the open file, it MUST NOT return an error in the processing of the statistics.

## **15.8. Operation 66: OFFLOAD\_CANCEL - Stop an Offloaded Operation**

### **15.8.1. ARGUMENT**

<CODE BEGINS>

```
struct OFFLOAD_CANCEL4args {
    /* CURRENT_FH: file to cancel */
    stateid4      oca_stateid;
};
```

<CODE ENDS>

### **15.8.2. RESULT**

<CODE BEGINS>

```
struct OFFLOAD_CANCEL4res {
    nfsstat4      ocr_status;
};
```

<CODE ENDS>

### **15.8.3. DESCRIPTION**

OFFLOAD\_CANCEL is used by the client to terminate an asynchronous operation, which is identified both by CURRENT\_FH and the oca\_stateid. I.e., there can be multiple offloaded operations acting on the file, the stateid will identify to the server exactly which one is to be stopped. Currently there are only two operations which can decide to be asynchronous: COPY and WRITE\_SAME.

In the context of server-to-server copy, the client can send OFFLOAD\_CANCEL to either the source or destination server, albeit with a different stateid. The client uses OFFLOAD\_CANCEL to inform the destination to stop the active transfer and uses the stateid it got back from the COPY operation. The client uses OFFLOAD\_CANCEL and



the stateid it used in the COPY\_NOTIFY to inform the source to not allow any more copying from the destination.

OFFLOAD\_CANCEL is also useful in situations in which the source server granted a very long or infinite lease on the destination server's ability to read the source file and all copy operations on the source file have been completed.

## **15.9. Operation 67: OFFLOAD\_STATUS - Poll for Status of Asynchronous Operation**

### **15.9.1. ARGUMENT**

<CODE BEGINS>

```
struct OFFLOAD_STATUS4args {
    /* CURRENT_FH: destination file */
    stateid4      osa_stateid;
};
```

<CODE ENDS>

### **15.9.2. RESULT**

<CODE BEGINS>

```
struct OFFLOAD_STATUS4resok {
    length4      osr_count;
    nfsstat4     osr_complete<1>;
};

union OFFLOAD_STATUS4res switch (nfsstat4 osr_status) {
case NFS4_OK:
    OFFLOAD_STATUS4resok      osr_resok4;
default:
    void;
};
```

<CODE ENDS>

### **15.9.3. DESCRIPTION**

OFFLOAD\_STATUS can be used by the client to query the progress of an asynchronous operation, which is identified both by CURRENT\_FH and



the `osa_stateid`. If this operation is successful, the number of bytes processed are returned to the client in the `osr_count` field.

If the optional `osr_complete` field is present, the asynchronous operation has completed. In this case the status value indicates the result of the asynchronous operation. In all cases, the server will also deliver the final results of the asynchronous operation in a `CB_OFFLOAD` operation.

The failure of this operation does not indicate the result of the asynchronous operation in any way.

### **15.10. Operation 68: READ\_PLUS - READ Data or Holes from a File**

#### **15.10.1. ARGUMENT**

<CODE BEGINS>

```
struct READ_PLUS4args {
    /* CURRENT_FH: file */
    stateid4      rpa_stateid;
    offset4       rpa_offset;
    count4        rpa_count;
};
```

<CODE ENDS>

#### **15.10.2. RESULT**

<CODE BEGINS>

```
enum data_content4 {
    NFS4_CONTENT_DATA = 0,
    NFS4_CONTENT_HOLE = 1
};

struct data_info4 {
    offset4      di_offset;
    length4      di_length;
};

struct data4 {
    offset4      d_offset;
    opaque       d_data<>;
};
```



```

union read_plus_content switch (data_content4 rpc_content) {
case NFS4_CONTENT_DATA:
    data4          rpc_data;
case NFS4_CONTENT_HOLE:
    data_info4     rpc_hole;
default:
    void;
};

```

```

/*
 * Allow a return of an array of contents.
 */
struct read_plus_res4 {
    bool                rpr_eof;
    read_plus_content  rpr_contents<>;
};

```

```

union READ_PLUS4res switch (nfsstat4 rp_status) {
case NFS4_OK:
    read_plus_res4  rp_resok4;
default:
    void;
};

```

<CODE ENDS>

### **15.10.3. DESCRIPTION**

The READ\_PLUS operation is based upon the NFSv4.1 READ operation (see [Section 18.22 of \[RFC5661\]](#)) and similarly reads data from the regular file identified by the current filehandle.

The client provides a `rpa_offset` of where the READ\_PLUS is to start and a `rpa_count` of how many bytes are to be read. A `rpa_offset` of zero means to read data starting at the beginning of the file. If `rpa_offset` is greater than or equal to the size of the file, the status NFS4\_OK is returned with `di_length` (the data length) set to zero and `eof` set to TRUE.

The READ\_PLUS result is comprised of an array of `rpr_contents`, each of which describe a `data_content4` type of data. For NFSv4.2, the allowed values are data and hole. A server MUST support both the data type and the hole if it uses READ\_PLUS. If it does not want to support a hole, it MUST use READ. The array contents MUST be contiguous in the file.





Holes SHOULD be returned in their entirety - clients must be prepared to get more information than they requested. Both the start and the end of the hole may exceed what was requested. If data to be returned is comprised entirely of zeros, then the server SHOULD return that data as a hole instead.

The server may elect to return adjacent elements of the same type. For example, if the server has a range of data comprised entirely of zeros and then a hole, it might want to return two adjacent holes to the client.

If the client specifies a `rpa_count` value of zero, the `READ_PLUS` succeeds and returns zero bytes of data. In all situations, the server may choose to return fewer bytes than specified by the client. The client needs to check for this condition and handle the condition appropriately.

If the client specifies an `rpa_offset` and `rpa_count` value that is entirely contained within a hole of the file, then the `di_offset` and `di_length` returned MAY be for the entire hole. If the the owner has a locked byte range covering `rpa_offset` and `rpa_count` entirely the `di_offset` and `di_length` MUST NOT be extended outside the locked byte range. This result is considered valid until the file is changed (detected via the change attribute). The server MUST provide the same semantics for the hole as if the client read the region and received zeroes; the implied holes contents lifetime MUST be exactly the same as any other read data.

If the client specifies an `rpa_offset` and `rpa_count` value that begins in a non-hole of the file but extends into hole the server should return an array comprised of both data and a hole. The client MUST be prepared for the server to return a short read describing just the data. The client will then issue another `READ_PLUS` for the remaining bytes, which the server will respond with information about the hole in the file.

Except when special stateids are used, the stateid value for a `READ_PLUS` request represents a value returned from a previous byte-range lock or share reservation request or the stateid associated with a delegation. The stateid identifies the associated owners if any and is used by the server to verify that the associated locks are still valid (e.g., have not been revoked).

If the read ended at the end-of-file (formally, in a correctly formed `READ_PLUS` operation, if `rpa_offset + rpa_count` is equal to the size of the file), or the `READ_PLUS` operation extends beyond the size of the file (if `rpa_offset + rpa_count` is greater than the size of the



file), eof is returned as TRUE; otherwise, it is FALSE. A successful READ\_PLUS of an empty file will always return eof as TRUE.

If the current filehandle is not an ordinary file, an error will be returned to the client. In the case that the current filehandle represents an object of type NF4DIR, NFS4ERR\_ISDIR is returned. If the current filehandle designates a symbolic link, NFS4ERR\_SYMLINK is returned. In all other cases, NFS4ERR\_WRONG\_TYPE is returned.

For a READ\_PLUS with a stateid value of all bits equal to zero, the server MAY allow the READ\_PLUS to be serviced subject to mandatory byte-range locks or the current share deny modes for the file. For a READ\_PLUS with a stateid value of all bits equal to one, the server MAY allow READ\_PLUS operations to bypass locking checks at the server.

On success, the current filehandle retains its value.

#### **15.10.3.1. Note on Client Support of Arms of the Union**

It was decided not to add a means for the client to inform the server as to which arms of READ\_PLUS it would support. In a later minor version, it may become necessary for the introduction of a new operation which would allow the client to inform the server as to whether it supported the new arms of the union of data types available in READ\_PLUS.

#### **15.10.4. IMPLEMENTATION**

In general, the IMPLEMENTATION notes for READ in [Section 18.22.4 of \[RFC5661\]](#) also apply to READ\_PLUS.

##### **15.10.4.1. Additional pNFS Implementation Information**

With pNFS, the semantics of using READ\_PLUS remains the same. Any data server MAY return a hole result for a READ\_PLUS request that it receives. When a data server chooses to return such a result, it has the option of returning information for the data stored on that data server (as defined by the data layout), but it MUST NOT return results for a byte range that includes data managed by another data server.

If mandatory locking is enforced, then the data server must also ensure that to return only information that is within the owner's locked byte range.



**15.10.5. READ\_PLUS with Sparse Files Example**

The following table describes a sparse file. For each byte range, the file contains either non-zero data or a hole. In addition, the server in this example will only create a hole if it is greater than 32K.

| Byte-Range  | Contents |
|-------------|----------|
| 0-15999     | Hole     |
| 16K-31999   | Non-Zero |
| 32K-255999  | Hole     |
| 256K-287999 | Non-Zero |
| 288K-353999 | Hole     |
| 354K-417999 | Non-Zero |

Table 5

Under the given circumstances, if a client was to read from the file with a max read size of 64K, the following will be the results for the given READ\_PLUS calls. This assumes the client has already opened the file, acquired a valid stateid ('s' in the example), and just needs to issue READ\_PLUS requests.

1. READ\_PLUS(s, 0, 64K) --> NFS\_OK, eof = false, <data[0,32K], hole[32K,224K]>. Since the first hole is less than the server's minimum hole size, the first 32K of the file is returned as data and the remaining 32K is returned as a hole which actually extends to 256K.
2. READ\_PLUS(s, 32K, 64K) --> NFS\_OK, eof = false, <hole[32K,224K]> The requested range was all zeros, and the current hole begins at offset 32K and is 224K in length. Note that the client should not have followed up the previous READ\_PLUS request with this one as the hole information from the previous call extended past what the client was requesting.
3. READ\_PLUS(s, 256K, 64K) --> NFS\_OK, eof = false, <data[256K, 288K], hole[288K, 354K]>. Returns an array of the 32K data and the hole which extends to 354K.
4. READ\_PLUS(s, 354K, 64K) --> NFS\_OK, eof = true, <data[354K, 418K]>. Returns the final 64K of data and informs the client there is no more data in the file.



## **15.11. Operation 69: SEEK - Find the Next Data or Hole**

### **15.11.1. ARGUMENT**

```
<CODE BEGINS>

enum data_content4 {
    NFS4_CONTENT_DATA = 0,
    NFS4_CONTENT_HOLE = 1
};

struct SEEK4args {
    /* CURRENT_FH: file */
    stateid4      sa_stateid;
    offset4       sa_offset;
    data_content4 sa_what;
};

<CODE ENDS>
```

### **15.11.2. RESULT**

```
<CODE BEGINS>

struct seek_res4 {
    bool      sr_eof;
    offset4   sr_offset;
};

union SEEK4res switch (nfsstat4 sa_status) {
case NFS4_OK:
    seek_res4      resok4;
default:
    void;
};

<CODE ENDS>
```

### **15.11.3. DESCRIPTION**

SEEK is an operation that allows a client to determine the location of the next `data_content4` in a file. It allows an implementation of the emerging extension to `lseek(2)` to allow clients to determine the next hole whilst in data or the next data whilst in a hole.

From the given `sa_offset`, find the next `data_content4` of type `sa_what` in the file. If the server can not find a corresponding `sa_what`, then the status will still be `NFS4_OK`, but `sr_eof` would be `TRUE`. If





the server can find the sa\_what, then the sr\_offset is the start of that content. If the sa\_offset is beyond the end of the file, then SEEK MUST return NFS4ERR\_NXIO.

All files MUST have a virtual hole at the end of the file. I.e., if a filesystem does not support sparse files, then a compound with {SEEK 0 NFS4\_CONTENT\_HOLE;} would return a result of {SEEK 1 X;} where 'X' was the size of the file.

SEEK must follow the same rules for stateids as READ\_PLUS ([Section 15.10.3](#)).

## **15.12. Operation 70: WRITE\_SAME - WRITE an ADB Multiple Times to a File**

### **15.12.1. ARGUMENT**

<CODE BEGINS>

```
enum stable_how4 {
    UNSTABLE4      = 0,
    DATA_SYNC4    = 1,
    FILE_SYNC4     = 2
};

struct app_data_block4 {
    offset4        adb_offset;
    length4        adb_block_size;
    length4        adb_block_count;
    length4        adb_reloff_blocknum;
    count4         adb_block_num;
    length4        adb_reloff_pattern;
    opaque         adb_pattern<>;
};

struct WRITE_SAME4args {
    /* CURRENT_FH: file */
    stateid4       wsa_stateid;
    stable_how4    wsa_stable;
    app_data_block4 wsa_adb;
};
```

<CODE ENDS>



### **15.12.2. RESULT**

<CODE BEGINS>

```
struct write_response4 {
    stateid4      wr_callback_id<1>;
    length4       wr_count;
    stable_how4   wr_committed;
    verifier4     wr_writeverf;
};

union WRITE_SAME4res switch (nfsstat4 wsr_status) {
case NFS4_OK:
    write_response4      resok4;
default:
    void;
};
```

<CODE ENDS>

### **15.12.3. DESCRIPTION**

The WRITE\_SAME operation writes an application data block to the regular file identified by the current filehandle (see WRITE SAME (10) in [T10-SBC2]). The target file is specified by the current filehandle. The data to be written is specified by an `app_data_block4` structure (Section 8.1.1). The client specifies with the `wsa_stable` parameter the method of how the data is to be processed by the server. It is treated like the `stable` parameter in the NFSv4.1 WRITE operation (see Section 18.2 of [RFC5661]).

A successful WRITE\_SAME will construct a reply for `wr_count`, `wr_committed`, and `wr_writeverf` as per the NFSv4.1 WRITE operation results. If `wr_callback_id` is set, it indicates an asynchronous reply (see Section 15.12.3.1).

WRITE\_SAME has to support all of the errors which are returned by WRITE plus NFS4ERR\_NOTSUPP, i.e., it is an OPTIONAL operation. If the client supports WRITE\_SAME, it MUST support CB\_OFFLOAD.

If the server supports ADBs, then it MUST support the WRITE\_SAME operation. The server has no concept of the structure imposed by the application. It is only when the application writes to a section of the file does order get imposed. In order to detect corruption even



before the application utilizes the file, the application will want to initialize a range of ADBs using WRITE\_SAME.

When the client invokes the WRITE\_SAME operation, it wants to record the block structure described by the `app_data_block4` on to the file.

When the server receives the WRITE\_SAME operation, it MUST populate `adb_block_count` ADBs in the file starting at `adb_offset`. The block size will be given by `adb_block_size`. The ADBN (if provided) will start at `adb_reloff_blocknum` and each block will be monotonically numbered starting from `adb_block_num` in the first block. The pattern (if provided) will be at `adb_reloff_pattern` of each block and will be provided in `adb_pattern`.

The server SHOULD return an asynchronous result if it can determine the operation will be long running (see [Section 15.12.3.1](#)). Once either the WRITE\_SAME finishes synchronously or the server uses CB\_OFFLOAD to inform the client of the asynchronous completion of the WRITE\_SAME, the server MUST return the ADBs to clients as data.

#### **[15.12.3.1](#). Asynchronous Transactions**

ADB initialization may lead to server determining to service the operation asynchronously. If it decides to do so, it sets the `stateid` in `wr_callback_id` to be that of the `wsa_stateid`. If it does not set the `wr_callback_id`, then the result is synchronous.

When the client determines that the reply will be given asynchronously, it should not assume anything about the contents of what it wrote until it is informed by the server that the operation is complete. It can use OFFLOAD\_STATUS ([Section 15.9](#)) to monitor the operation and OFFLOAD\_CANCEL ([Section 15.8](#)) to cancel the operation. An example of a asynchronous WRITE\_SAME is shown in Figure 6. Note that as with the COPY operation, WRITE\_SAME must provide a `stateid` for tracking the asynchronous operation.









### **15.13. Operation 71: CLONE - Clone a range of file into another file**

#### **15.13.1. ARGUMENT**

<CODE BEGINS>

```
struct CLONE4args {
    /* SAVED_FH: source file */
    /* CURRENT_FH: destination file */
    stateid4      cl_src_stateid;
    stateid4      cl_dst_stateid;
    offset4       cl_src_offset;
    offset4       cl_dst_offset;
    length4       cl_count;
};
```

<CODE ENDS>

#### **15.13.2. RESULT**

<CODE BEGINS>

```
struct CLONE4res {
    nfsstat4      cl_status;
};
```

<CODE ENDS>

#### **15.13.3. DESCRIPTION**

The CLONE operation is used to clone file content from a source file specified by the SAVED\_FH value into a destination file specified by CURRENT\_FH without actually copying the data, e.g., by using a copy-on-write mechanism.

Both SAVED\_FH and CURRENT\_FH must be regular files. If either SAVED\_FH or CURRENT\_FH is not a regular file, the operation MUST fail and return NFS4ERR\_WRONG\_TYPE.

SAVED\_FH and CURRENT\_FH must be different files. If SAVED\_FH and CURRENT\_FH refer to the same file, the operation MUST fail with NFS4ERR\_INVALID.

The ca\_dst\_stateid MUST refer to a stateid that is valid for a WRITE operation and follows the rules for stateids in Sections 8.2.5 and 18.32.3 of [RFC5661]. The ca\_src\_stateid MUST refer to a stateid that is valid for a READ operations and follows the rules for



stateids in Sections [8.2.5](#) and [18.22.3](#) of [[RFC5661](#)]. If either stateid is invalid, then the operation MUST fail.

The `cl_src_offset` is the starting offset within the source file from which the data to be cloned will be obtained and the `cl_dst_offset` is the starting offset of the target region into which the cloned data will be placed. An offset of 0 (zero) indicates the start of the respective file. The number of bytes to be cloned is obtained from `cl_count`, except that a `cl_count` of 0 (zero) indicates that the number of bytes to be cloned is the count of bytes between `cl_src_offset` and the EOF of the source file. Both `cl_src_offset` and `cl_dst_offset` must be aligned to the clone block size [Section 12.2.1](#). The number of bytes to be cloned must be a multiple of the clone block size, except in the case in which `cl_src_offset` plus the number of bytes to be cloned is equal to the source file size.

If the source offset or the source offset plus count is greater than the size of the source file, the operation MUST fail with `NFS4ERR_INVALID`. The destination offset or destination offset plus count may be greater than the size of the destination file.

If the target area of the clone operation ends beyond the end of the destination file, the offset at the end of the target area will determine the new size of the destination file. The contents of any block not part of the target area will be the same as if the file size were extended by a `WRITE`.

If the area to be cloned is not a multiple of the clone block size and the size of the destination file is past the end of the target area, the area between the end of the target area and the next multiple of the clone block size will be zeroed.

The `CLONE` operation is atomic in that other operations may not see any intermediate states between the state of the two files before the operation and that after the operation. `READS` of the destination file will never see some blocks of the target area cloned without all of them being cloned. `WRITES` of the source area will either have no effect on the data of the target file or be fully reflected in the target area of the destination file.

The completion status of the operation is indicated by `cr_status`.

## **[16. NFSv4.2 Callback Operations](#)**



## **16.1. Operation 15: CB\_OFFLOAD - Report results of an asynchronous operation**

### **16.1.1. ARGUMENT**

<CODE BEGINS>

```
struct write_response4 {
    stateid4      wr_callback_id<1>;
    length4       wr_count;
    stable_how4   wr_committed;
    verifier4     wr_writeverf;
};

union offload_info4 switch (nfsstat4 coa_status) {
case NFS4_OK:
    write_response4 coa_resok4;
default:
    length4         coa_bytes_copied;
};

struct CB_OFFLOAD4args {
    nfs_fh4        coa_fh;
    stateid4       coa_stateid;
    offload_info4  coa_offload_info;
};
```

<CODE ENDS>

### **16.1.2. RESULT**

<CODE BEGINS>

```
struct CB_OFFLOAD4res {
    nfsstat4      cor_status;
};
```

<CODE ENDS>

### **16.1.3. DESCRIPTION**

CB\_OFFLOAD is used to report to the client the results of an asynchronous operation, e.g., Server Side Copy or WRITE\_SAME. The coa\_fh and coa\_stateid identify the transaction and the coa\_status indicates success or failure. The coa\_resok4.wr\_callback\_id MUST NOT be set. If the transaction failed, then the coa\_bytes\_copied contains the number of bytes copied before the failure occurred. The



coa\_bytes\_copied value indicates the number of bytes copied but not which specific bytes have been copied.

If the client supports any of the following operations:

COPY: for both intra-server and inter-server asynchronous copies

WRITE\_SAME: for ADB initialization

then the client is REQUIRED to support the CB\_OFFLOAD operation.

There is a potential race between the reply to the original transaction on the forechannel and the CB\_OFFLOAD callback on the backchannel. Sections [2.10.6.3](#) and [20.9.3](#) of [[RFC5661](#)] describe how to handle this type of issue.

Upon success, the coa\_resok4.wr\_count presents for each operation:

COPY: the total number of bytes copied

WRITE\_SAME: the same information that a synchronous WRITE\_SAME would provide

## **[17.](#) Security Considerations**

NFSv4.2 has all of the security concerns present in NFSv4.1 (see [Section 21 of \[RFC5661\]](#)) and those present in the Server Side Copy (see [Section 4.10](#)) and in Labeled NFS (see [Section 9.7](#)).

## **[18.](#) IANA Considerations**

The IANA Considerations for Labeled NFS are addressed in [[Quigley14](#)].

## **[19.](#) References**

### **[19.1.](#) Normative References**

[NFSv42xdr]

Haynes, T., "Network File System (NFS) Version 4 Minor Version 2 External Data Representation Standard (XDR) Description", December 2014.

[RFC3986] Berners-Lee, T., Fielding, R., and L. Masinter, "Uniform Resource Identifier (URI): Generic Syntax", STD 66, [RFC 3986](#), January 2005.





[RFC5661] Shepler, S., Eisler, M., and D. Noveck, "Network File System (NFS) Version 4 Minor Version 1 Protocol", [RFC 5661](#), January 2010.

[RFC5662] Shepler, S., Eisler, M., and D. Noveck, "Network File System (NFS) Version 4 Minor Version 1 External Data Representation Standard (XDR) Description", [RFC 5662](#), January 2010.

[posix\_fadvise]

The Open Group, "Section 'posix\_fadvise()' of System Interfaces of The Open Group Base Specifications Issue 6, IEEE Std 1003.1, 2004 Edition", 2004.

[posix\_fallocate]

The Open Group, "Section 'posix\_fallocate()' of System Interfaces of The Open Group Base Specifications Issue 6, IEEE Std 1003.1, 2004 Edition", 2004.

[rpcsec\_gssv3]

Adamson, W. and N. Williams, "Remote Procedure Call (RPC) Security Version 3", December 2014.

## **[19.2. Informative References](#)**

[Ashdown08]

Ashdown, L., "Chapter 15, Validating Database Files and Backups, of Oracle Database Backup and Recovery User's Guide 11g Release 1 (11.1)", August 2008.

[BL73]

Bell, D. and L. LaPadula, "Secure Computer Systems: Mathematical Foundations and Model", Technical Report M74-244, The MITRE Corporation, Bedford, MA, May 1973.

[Baira08]

Bairavasundaram, L., Goodson, G., Schroeder, B., Arpaci-Dusseau, A., and R. Arpaci-Dusseau, "An Analysis of Data Corruption in the Storage Stack", Proceedings of the 6th USENIX Symposium on File and Storage Technologies (FAST '08), 2008.

[IESG08]

ISEG, "IESG Processing of RFC Errata for the IETF Stream", 2008.

[McDougall07]

McDougall, R. and J. Mauro, "[Section 11.4.3](#), Detecting Memory Corruption of Solaris Internals", 2007.



## [NFSv4-Versioning]

Haynes, T. and D. Noveck, "NFSv4 Version Management", November 2014.

## [Quigley14]

Quigley, D., Lu, J., and T. Haynes, "Registry Specification for Mandatory Access Control (MAC) Security Label Formats", [draft-ietf-nfsv4-lfs-registry-01](#) (work in progress), September 2014.

[RFC1108] Kent, S., "Security Options for the Internet Protocol", [RFC 1108](#), November 1991.

[RFC2119] Bradner, S., "Key words for use in RFCs to Indicate Requirement Levels", March 1997.

[RFC2401] Kent, S. and R. Atkinson, "Security Architecture for the Internet Protocol", [RFC 2401](#), November 1998.

[RFC2616] Fielding, R., Gettys, J., Mogul, J., Frystyk, H., Masinter, L., Leach, P., and T. Berners-Lee, "Hypertext Transfer Protocol -- HTTP/1.1", [RFC 2616](#), June 1999.

[RFC4506] Eisler, M., "XDR: External Data Representation Standard", [RFC 4506](#), May 2006.

[RFC5663] Black, D., Fridella, S., and J. Glasgow, "Parallel NFS (pNFS) Block/Volume Layout", [RFC 5663](#), January 2010.

[RFC7204] Haynes, T., "Requirements for Labeled NFS", [RFC 7204](#), April 2014.

[RFC7530] Haynes, T. and D. Noveck, "Network File System (NFS) version 4 Protocol", [RFC 7530](#), March 2015.

[RFC959] Postel, J. and J. Reynolds, "File Transfer Protocol", STD 9, [RFC 959](#), October 1985.

## [Strohm11]

Strohm, R., "Chapter 2, Data Blocks, Extents, and Segments, of Oracle Database Concepts 11g Release 1 (11.1)", January 2011.

## [T10-SBC2]

Elliott, R., Ed., "ANSI INCITS 405-2005, Information Technology - SCSI Block Commands - 2 (SBC-2)", November 2004.



## [Appendix A](#). Acknowledgments

Tom Haynes would like to thank NetApp, Inc. for its funding of his time on this project.

For the Sharing change attribute implementation characteristics with NFSv4 clients, the original draft was by Trond Myklebust.

For the NFS Server Side Copy, the original draft was by James Lentini, Mike Eisler, Deepak Kenchamma, Anshul Madan, and Rahul Iyer. Tom Talpey co-authored an unpublished version of that document. It was also reviewed by a number of individuals: Pranoop Erasani, Tom Haynes, Arthur Lent, Trond Myklebust, Dave Noveck, Theresa Lingutla-Raj, Manjunath Shankarao, Satyam Vaghani, and Nico Williams. Anna Schumaker's early prototyping experience helped us avoid some traps. Also, both Olga Kornievskaya and Andy Adamson brought implementation experience to the use of copy stateids in inter-server copy. Jorge Mora was able to optimize the handling of errors for the result of COPY.

For the NFS space reservation operations, the original draft was by Mike Eisler, James Lentini, Manjunath Shankarao, and Rahul Iyer.

For the sparse file support, the original draft was by Dean Hildebrand and Marc Eshel. Valuable input and advice was received from Sorin Faibish, Bruce Fields, Benny Halevy, Trond Myklebust, and Richard Scheffenegger.

For the Application IO Hints, the original draft was by Dean Hildebrand, Mike Eisler, Trond Myklebust, and Sam Falkner. Some early reviewers included Benny Halevy and Pranoop Erasani.

For Labeled NFS, the original draft was by David Quigley, James Morris, Jarret Lu, and Tom Haynes. Peter Staubach, Trond Myklebust, Stephen Smalley, Sorin Faibish, Nico Williams, and David Black also contributed in the final push to get this accepted.

Christoph Hellwig was very helpful in getting the WRITE\_SAME semantics to model more of what T10 was doing for WRITE SAME (10) [[T10-SBC2](#)]. And he led the push to get space reservations to more closely model the posix\_fallocate.

Andy Adamson picked up the RPCSEC\_GSSv3 work, which enabled both Labeled NFS and Server Side Copy to be present more secure options.

Christoph Hellwig provided the update to GETDEVICELIST.



During the review process, Talia Reyes-Ortiz helped the sessions run smoothly. While many people contributed here and there, the core reviewers were Andy Adamson, Pranoop Erasani, Bruce Fields, Chuck Lever, Trond Myklebust, David Noveck, Peter Staubach, and Mike Kupfer.

#### **Appendix B. RFC Editor Notes**

[RFC Editor: please remove this section prior to publishing this document as an RFC]

[RFC Editor: prior to publishing this document as an RFC, please replace all occurrences of NFSv42xdr with RFCxxxx where xxxx is the RFC number of the companion XDR document]

#### Author's Address

Thomas Haynes  
Primary Data, Inc.  
4300 El Camino Real Ste 100  
Los Altos, CA 94022  
USA

Phone: +1 408 215 1519  
Email: thomas.haynes@primarydata.com



