

PCE Working Group
Internet-Draft
Intended status: Standards Track
Expires: 29 July 2022

D. Dhody, Ed.
Huawei Technologies
J. Hardwick
Metaswitch
V. Beeram
Juniper Networks
J. Tantsura
Microsoft
25 January 2022

A YANG Data Model for Path Computation Element Communications Protocol
(PCEP)
draft-ietf-pce-pcep-yang-18

Abstract

This document defines a YANG data model for the management of Path Computation Element communications Protocol (PCEP) for communications between a Path Computation Client (PCC) and a Path Computation Element (PCE), or between two PCEs. The data model includes configuration and state data.

Status of This Memo

This Internet-Draft is submitted in full conformance with the provisions of [BCP 78](#) and [BCP 79](#).

Internet-Drafts are working documents of the Internet Engineering Task Force (IETF). Note that other groups may also distribute working documents as Internet-Drafts. The list of current Internet-Drafts is at <https://datatracker.ietf.org/drafts/current/>.

Internet-Drafts are draft documents valid for a maximum of six months and may be updated, replaced, or obsoleted by other documents at any time. It is inappropriate to use Internet-Drafts as reference material or to cite them other than as "work in progress."

This Internet-Draft will expire on 29 July 2022.

Copyright Notice

Copyright (c) 2022 IETF Trust and the persons identified as the document authors. All rights reserved.

This document is subject to [BCP 78](#) and the IETF Trust's Legal Provisions Relating to IETF Documents (<https://trustee.ietf.org/license-info>) in effect on the date of publication of this document.

Internet-Draft

PCE-YANG

January 2022

Please review these documents carefully, as they describe your rights and restrictions with respect to this document. Code Components extracted from this document must include Revised BSD License text as described in Section 4.e of the [Trust Legal Provisions](#) and are provided without warranty as described in the Revised BSD License.

Table of Contents

1.	Introduction	3
2.	Requirements Language	3
3.	Terminology and Notation	3
3.1.	Tree Diagrams	5
3.2.	Prefixes in Data Node Names	5
3.3.	References in the Model	6
4.	Objectives	8
5.	The Design of PCEP Data Model	9
5.1.	The Overview of PCEP Data Model	9
5.2.	The Entity	10
5.3.	The Peer Lists	14
5.4.	The Session Lists	16
5.5.	Notifications	18
5.6.	RPC	18
6.	The Design of PCEP Statistics Data Model	19
7.	Advanced PCE Features	22
7.1.	Stateful PCE's LSP-DB	22
8.	Other Considerations	23
8.1.	PCEP over TLS (PCEPS)	23
9.	PCEP YANG Modules	23
9.1.	ietf-pcep module	23
9.2.	ietf-pcep-stats module	79
10.	Security Considerations	97
11.	IANA Considerations	99
12.	Implementation Status	100
13.	Acknowledgements	100
14.	References	101
14.1.	Normative References	101
14.2.	Informative References	104
Appendix A.	The Full PCEP Data Model	105
Appendix B.	Example	112
Appendix C.	Contributor Addresses	115
	Authors' Addresses	116

Internet-Draft

PCE-YANG

January 2022

1. Introduction

The Path Computation Element (PCE) defined in [\[RFC4655\]](#) is an entity that is capable of computing a network path or route based on a network graph, and applying computational constraints. A Path Computation Client (PCC) may make requests to a PCE for paths to be computed.

PCEP is the communication protocol between a PCC and PCE and is defined in [\[RFC5440\]](#). PCEP interactions include path computation requests and path computation replies as well as notifications of specific states related to the use of a PCE in the context of Multiprotocol Label Switching (MPLS) and Generalized MPLS (GMPLS) Traffic Engineering (TE). [\[RFC8231\]](#) specifies extensions to PCEP to enable stateful control of MPLS TE LSPs.

This document defines a YANG [\[RFC7950\]](#) data model for the management of PCEP speakers. It is important to establish a common data model for how PCEP speakers are identified, configured, and monitored. The data model includes configuration data and state data.

This document contains a specification of the PCEP YANG module, "ietf-pcep" which provides the PCEP [\[RFC5440\]](#) data model.

The PCEP operational state is included in the same tree as the PCEP configuration consistent with Network Management Datastore Architecture (NMDA) [\[RFC8342\]](#). The origin of the data is indicated as per the origin metadata annotation.

2. Requirements Language

The key words "MUST", "MUST NOT", "REQUIRED", "SHALL", "SHALL NOT", "SHOULD", "SHOULD NOT", "RECOMMENDED", "NOT RECOMMENDED", "MAY", and "OPTIONAL" in this document are to be interpreted as described in [BCP 14](#) [\[RFC2119\]](#) [\[RFC8174\]](#) when, and only when, they appear in all capitals, as shown here.

[3.](#) Terminology and Notation

This document uses the terminology defined in [[RFC4655](#)] and [[RFC5440](#)]. In particular, it uses the following acronyms.

- * Path Computation Request message (PCReq).
- * Path Computation Reply message (PCRep).
- * Notification message (PCNtf).

Dhody, et al.

Expires 29 July 2022

[Page 3]

Internet-Draft

PCE-YANG

January 2022

- * Error message (PCErr).
- * Request Parameters object (RP).
- * Synchronization Vector object (SVEC).
- * Explicit Route object (ERO).

This document also uses the following terms defined in [[RFC7420](#)]:

- * PCEP entity: a local PCEP speaker.
- * PCEP peer: to refer to a remote PCEP speaker.
- * PCEP speaker: where it is not necessary to distinguish between local and remote.

Further, this document also uses the following terms defined in [[RFC8231](#)] :

- * Stateful PCE, Passive Stateful PCE, Active Stateful PCE
- * Delegation, Revocation, Redelegation
- * LSP State Report, Path Computation Report message (PCRpt).
- * LSP State Update, Path Computation Update message (PCUpd).
- * PLSP-ID: a PCEP-specific identifier for the LSP.

* SRP: Stateful PCE Request Parameters

[RFC8281] :

* PCE-initiated LSP, Path Computation LSP Initiate Message (PCInitiate).

[RFC8408] :

* Path Setup Type (PST).

[RFC8664] :

* Segment Routing (SR).

[RFC5541] :

* Objective Function (OF).

[RFC8697] :

* Association.

[RFC6241] :

* Configuration data.

* State data.

[3.1.](#) Tree Diagrams

A simplified graphical representation of the data model is used in this document. The meaning of the symbols in these diagrams is defined in [[RFC8340](#)].

[3.2.](#) Prefixes in Data Node Names

In this document, names of data nodes and other data model objects are often used without a prefix, as long as it is clear from the context in which YANG module each name is defined. Otherwise, names are prefixed using the standard prefix associated with the

corresponding YANG module, as shown in Table 1.

Prefix	YANG module	Reference
yang	ietf-yang-types	[RFC6991]
inet	ietf-inet-types	[RFC6991]
te-types	ietf-te-types	[RFC8776]
key-chain	ietf-key-chain	[RFC8177]
nacm	ietf-netconf-acm	[RFC8341]
tlss	ietf-tls-server	[I-D.ietf-netconf-tls-client-server]
tlsc	ietf-tls-client	[I-D.ietf-netconf-tls-client-server]
ospf	ietf-ospf	[I-D.ietf-ospf-yang]
isis	ietf-isis	[I-D.ietf-isis-yang-isis-cfg]

Table 1: Prefixes and corresponding YANG modules

3.3. References in the Model

Following documents are referenced in the model defined in this document -

Documents	Reference
OSPF Protocol Extensions for Path Computation Element (PCE) Discovery	[RFC5088]
IS-IS Protocol Extensions for Path Computation Element	[RFC5089]

(PCE) Discovery		
+-----+	+-----+	+-----+
Path Computation Element (PCE) Communication Protocol (PCEP)	[RFC5440]	
+-----+	+-----+	+-----+
Preserving Topology Confidentiality in Inter-Domain Path Computation Using a Path-Key-Based Mechanism	[RFC5520]	
+-----+	+-----+	+-----+
Encoding of Objective Functions in the Path Computation Element Communication Protocol (PCEP)	[RFC5541]	
+-----+	+-----+	+-----+
Path Computation Element Communication Protocol (PCEP) Requirements and Protocol Extensions in Support of Global Concurrent Optimization	[RFC5557]	
+-----+	+-----+	+-----+
Common YANG Data Types	[RFC6991]	
+-----+	+-----+	+-----+
YANG Data Model for Key Chains	[RFC8177]	
+-----+	+-----+	+-----+
Path Computation Element Communication Protocol (PCEP) Extensions for	[RFC8231]	

Stateful PCE		
+-----+	+-----+	+-----+
Optimizations of Label Switched Path State Synchronization Procedures for a Stateful PCE	[RFC8232]	
+-----+	+-----+	+-----+

PCEPS: Usage of TLS to Provide a Secure Transport for the Path Computation Element Communication Protocol (PCEP)	[RFC8253]	
+-----+-----+		
Path Computation Element Communication Protocol (PCEP) Extensions for PCE-Initiated LSP Setup in a Stateful PCE Model	[RFC8281]	
+-----+-----+		
Extensions to the Path Computation Element Communication Protocol (PCEP) for Point-to- Multipoint Traffic Engineering Label Switched Paths	[RFC8306]	
+-----+-----+		
Network Configuration Access Control Model	[RFC8341]	
+-----+-----+		
Conveying Path Setup Type in PCE Communication Protocol (PCEP) Messages	[RFC8408]	
+-----+-----+		
Traffic Engineering Common YANG Types	[RFC8776]	
+-----+-----+		
A YANG Data Model for Traffic Engineering Tunnels and Interfaces	[I-D.ietf-teas-yang-te]	
+-----+-----+		
YANG Groupings for TLS Clients and TLS Servers	[I-D.ietf-netconf-tls-client-server]	
+-----+-----+		
PCEP Extensions for	[RFC8664]	

PCEP Extensions for Establishing Relationships Between Sets of LSPs	[RFC8697]
YANG Data Model for OSPF Protocol	[I-D.ietf-ospf-yang]
YANG Data Model for IS-IS Protocol	[I-D.ietf-isis-yang-isis-cfg]
PCEP extensions for GMPLS	[RFC8779]
ASSOCIATION Type Field in Path Computation Element Protocol (PCEP) Numbers	[IANA-PCEP]
Path Computation Element (PCE) Capability Flags in Open Shortest Path First v2 (OSPFv2) Parameters	[IANA-OSPF]

Table 2: References in the YANG modules

4. Objectives

This section describes some of the design objectives for the model:

- * In case of existing implementations, it needs to map the data model defined in this document to their proprietary native data model. To facilitate such mappings, the data model should be simple.
- * The data model should be suitable for new implementations to use as is.
- * Mapping to the PCEP MIB Module should be clear.
- * The data model should allow for static configurations of peers.

- * The data model should include read-only counters in order to gather statistics for sent and received PCEP messages, received messages with errors, and messages that could not be sent due to errors. This could be in a separate model which augments the base data model.
- * It should be fairly straightforward to augment the base data model for advanced PCE features.

[5.](#) The Design of PCEP Data Model

[5.1.](#) The Overview of PCEP Data Model

The PCEP YANG module defined in this document has all the common building blocks for the PCEP protocol.

```
module: ietf-pcep
  +--rw pcep!
    +--rw entity
      +--rw addr inet:ip-address-no-zone
      +--rw enabled? boolean
      +--rw role pcep-role
      +--rw description? string
      +--rw speaker-entity-id? string {sync-opt}?
      +--rw admin-status? boolean
      +--ro index? uint32
      +--ro oper-status? pcep-oper-status
      +--rw domains
        | +--rw domains* [domain-type domain-info]
        | +--...
      +--rw capability
        | +--...
      +--rw pce-info
        | +--rw scope
        | | +--...
        | +--rw neighbour-domains
        | | +--...
        | +--rw path-key {path-key}?
        | | +--...
        | +--...
      +--...
      +--ro lsp-db {stateful}?
        | +--ro db-ver? uint64 {sync-opt}?
        | +--ro association-list*
        | | [type id source global-source extended-id]
        | | {association}?
        | +--...
```

```
| | +--...
| +--ro lsp* [plsp-id pcc-id lsp-id]
```

Internet-Draft

PCE-YANG

January 2022

```
| +--...
+--ro path-keys {path-key}?
| +--ro path-keys* [path-key]
| +--...
+--rw peers
  +--rw peer* [addr]
  +--...
  +--ro sessions
    +--ro session* [initiator]
    +--...
```

rpcs:

```
+---x trigger-resync {stateful,sync-opt}?
+---w input
+---w pcc? -> /pcep/entity/peers/peer/addr
```

notifications:

```
+---n pcep-session-up
| +--...
+---n pcep-session-down
| +--...
+---n pcep-session-local-overload
| +--...
+---n pcep-session-local-overload-clear
| +--...
+---n pcep-session-peer-overload
| +--...
+---n pcep-session-peer-overload-clear
+--...
```

5.2. The Entity

The PCEP yang module may contain status information for the local PCEP entity.

The entity has an IP address (using ietf-inet-types [[RFC6991](#)]) and a "role" leaf (the local entity PCEP role) as mandatory.

Note that, the PCEP MIB module [[RFC7420](#)] uses an entity list and a

system generated entity index as a primary index to the read only entity table. If the device implements the PCEP MIB, the "index" leaf MUST contain the value of the corresponding pcePcepEntityIndex and only one entity is assumed.

The various information related to this entity such as its domain, capabilities etc. When the entity is PCE it could also have path-key and the LSP-DB information.

```
module: ietf-pcep
  +--rw pcep!
    +--rw entity
      +--rw addr inet:ip-address-no-zone
      +--rw enabled? boolean
      +--rw role pcep-role
      +--rw description? string
      +--rw speaker-entity-id? string {sync-opt}?
      +--rw admin-status? boolean
      +--ro index? uint32
      +--ro oper-status? pcep-oper-status
      +--rw domains
        | +--rw domains* [domain-type domain-info]
        |   +--rw domain-type identityref
        |   +--rw domain-info domain
      +--rw capability
        | +--rw capability? bits
        | +--rw pce-initiated? boolean {pce-initiated}?
        | +--rw include-db-ver? boolean {stateful,sync-opt}?
        | +--rw trigger-resync? boolean {stateful,sync-opt}?
        | +--rw trigger-initial-sync? boolean {stateful,sync-opt}?
        | +--rw incremental-sync? boolean {stateful,sync-opt}?
        | +--rw sr {sr}?
        |   +--rw enabled? boolean
        |   +--rw msd-limit? boolean
        |   +--rw nai? boolean
      +--rw msd? uint8 {sr}?
      +--rw pce-info
        | +--rw scope
        | | +--rw path-scope? bits
        | | +--rw intra-area-pref? uint8
        | | +--rw inter-area-pref? uint8
```

```

| | +--rw inter-as-pref?      uint8
| | +--rw inter-layer-pref?   uint8
| +--rw neighbour-domains
| | +--rw domains* [domain-type domain-info]
| |   +--rw domain-type      identityref
| |   +--rw domain-info      domain
| +--rw path-key {path-key}?
|   +--rw enabled?           boolean
|   +--rw discard-timer?     uint32
|   +--rw reuse-time?        uint32
|   +--rw pce-id?            inet:ip-address-no-zone
+--rw connect-timer?          uint16
+--rw connect-max-retry?      uint32
+--rw init-back-off-timer?    uint16
+--rw max-back-off-timer?     uint32
+--ro open-wait-timer?        uint16

```

```

+--ro keep-wait-timer?          uint16
+--rw keepalive-timer?          uint8
+--rw dead-timer?               uint8
+--rw allow-negotiation?        boolean
+--rw max-keepalive-timer?      uint8
+--rw max-dead-timer?           uint8
+--rw min-keepalive-timer?      uint8
+--rw min-dead-timer?           uint8
+--rw sync-timer?               uint16 {svec}?
+--rw request-timer?            uint16
+--rw max-sessions?             uint32
+--rw max-unknown-reqs?         uint32
+--rw max-unknown-msgs?         uint32
+--rw pcep-notification-max-rate uint32
+--rw stateful-parameter {stateful}?
| +--rw state-timeout?          uint32
| +--rw redelegation-timeout?   uint32
| +--rw rpt-non-pcep-lsp?       boolean
+--rw of-list {objective-function}?
| +--rw objective-function* [of]
|   +--rw of                    identityref
+--ro lsp-db {stateful}?
| +--ro db-ver?                 uint64 {sync-opt}?
| +--ro association-list*
| |   [type id source global-source extended-id]

```

```

|         {association}?
|         +--ro type                identityref
|         +--ro id                  uint16
|         +--ro source              inet:ip-address-no-zone
|         +--ro global-source       uint32
|         +--ro extended-id         string
|         +--ro lsp* [plsp-id pcc-id lsp-id]
|             +--ro plsp-id         -> /pcep/entity/lsp-db/lsp/plsp-id
|             +--ro pcc-id          -> /pcep/entity/lsp-db/lsp/pcc-id
|             +--ro lsp-id          -> /pcep/entity/lsp-db/lsp/lsp-id
+--ro lsp* [plsp-id pcc-id lsp-id]
    +--ro plsp-id                    uint32
    +--ro pcc-id                    inet:ip-address-no-zone
    +--ro source?                   inet:ip-address-no-zone
    +--ro destination?              inet:ip-address-no-zone
    +--ro tunnel-id?                uint16
    +--ro lsp-id                    uint16
    +--ro extended-tunnel-id?       inet:ip-address-no-zone
    +--ro admin-state?              boolean
    +--ro operational-state?        operational-state
    +--ro delegated
    | +--ro enabled?                boolean
    | +--ro peer?                  -> /pcep/entity/peers/peer/addr

```

```

|         | +--ro srp-id?          uint32
|         +--ro initiation {pce-initiated}?
|         | +--ro enabled?        boolean
|         | +--ro peer?           -> /pcep/entity/peers/peer/addr
+--ro symbolic-path-name?         string
+--ro last-error?                 identityref
+--ro pst?                       identityref
+--ro association-list*
    [type id source global-source extended-id]
    {association}?
    +--ro type
    |     -> /pcep/entity/lsp-db/association-list/type
    +--ro id
    |     -> /pcep/entity/lsp-db/association-list/id
    +--ro source                   leafref
    +--ro global-source            leafref
    +--ro extended-id             leafref
+--ro path-keys {path-key}?

```

```

|   +---ro path-keys* [path-key]
|   |   +---ro path-key          uint16
|   |   +---ro cps
|   |   |   +---ro explicit-route-objects* [index]
|   |   |   |   +---ro index          uint32
|   |   |   |   +---ro (type)?
|   |   |   |   |   +---:(numbered-node-hop)
|   |   |   |   |   |   +---ro numbered-node-hop
|   |   |   |   |   |   |   +---ro node-id      te-node-id
|   |   |   |   |   |   |   +---ro hop-type?    te-hop-type
|   |   |   |   |   +---:(numbered-link-hop)
|   |   |   |   |   |   +---ro numbered-link-hop
|   |   |   |   |   |   |   +---ro link-tp-id    te-tp-id
|   |   |   |   |   |   |   +---ro hop-type?    te-hop-type
|   |   |   |   |   |   |   +---ro direction?   te-link-direction
|   |   |   |   |   +---:(unnumbered-link-hop)
|   |   |   |   |   |   +---ro unnumbered-link-hop
|   |   |   |   |   |   |   +---ro link-tp-id    te-tp-id
|   |   |   |   |   |   |   +---ro node-id      te-node-id
|   |   |   |   |   |   |   +---ro hop-type?    te-hop-type
|   |   |   |   |   |   |   +---ro direction?   te-link-direction
|   |   |   |   |   +---:(as-number)
|   |   |   |   |   |   +---ro as-number-hop
|   |   |   |   |   |   |   +---ro as-number    inet:as-number
|   |   |   |   |   |   |   +---ro hop-type?    te-hop-type
|   |   |   |   |   +---:(label)
|   |   |   |   |   |   +---ro label-hop
|   |   |   |   |   |   +---ro te-label
|   |   |   |   |   ...
|   |   +---ro pcc-original?    -> /pcep/entity/peers/peer/addr

```

```

|   +---ro req-id?          uint32
|   +---ro retrieved?       boolean
|   +---ro pcc-retrieved?   -> /pcep/entity/peers/peer/addr
|   +---ro creation-time?   yang:timestamp
|   +---ro discard-time?    uint32
|   +---ro reuse-time?      uint32
+---rw peers
|   +---rw peer* [addr]
|   +---...

```

5.3. The Peer Lists

The peer list contains peer(s) that the local PCEP entity knows about. A PCEP speaker is identified by its IP address. If there is a PCEP speaker in the network that uses multiple IP addresses then it looks like multiple distinct peers to the other PCEP speakers in the network.

Since PCEP sessions can be ephemeral, the peer list tracks a peer even when no PCEP session currently exists to that peer. The statistics contained are an aggregate of the statistics for all successive sessions to that peer.

To limit the quantity of information that is stored, an implementation MAY choose to discard this information if and only if no PCEP session exists to the corresponding peer.

The data model for PCEP peer presented in this document uses a flat list of peers. Each peer in the list is identified by its IP address.

There is a list for static peer configuration and operational state of all peers (i.e. static as well as discovered)("/pcep/entity/peers"). The list is used to enable remote PCE configuration at PCC (or PCE) and has the operational state of these peers as well as the remote PCE peer which were discovered and PCC peers that have initiated session.

```
module: ietf-pcep
  +--rw pcep!
    +--rw entity
      +--...
      +--rw peers
        +--rw peer* [addr]
          +--rw addr                inet:ip-address-no-zone
          +--rw role                pcep-role
          +--rw description?       string
```

```
+--rw domains
| +--rw domains* [domain-type domain-info]
|   +--rw domain-type  identityref
|   +--rw domain-info  domain
```



```

+--rw capability
|   +--rw capability?                bits
|   +--rw pce-initiated?             boolean
|   |   {pce-initiated}?
|   +--rw include-db-ver?            boolean
|   |   {stateful,sync-opt}?
|   +--rw trigger-resync?            boolean
|   |   {stateful,sync-opt}?
|   +--rw trigger-initial-sync?      boolean
|   |   {stateful,sync-opt}?
|   +--rw incremental-sync?          boolean
|   |   {stateful,sync-opt}?
|   +--rw sr {sr}?
|       +--rw enabled?               boolean
|       +--rw msd-limit?             boolean
|       +--rw nai?                   boolean
+--rw msd?                           uint8 {sr}?
+--rw pce-info
|   +--rw scope
|   |   +--rw path-scope?             bits
|   |   +--rw intra-area-pref?        uint8
|   |   +--rw inter-area-pref?        uint8
|   |   +--rw inter-as-pref?          uint8
|   |   +--rw inter-layer-pref?       uint8
|   +--rw neighbour-domains
|       +--rw domains* [domain-type domain-info]
|           +--rw domain-type          identityref
|           +--rw domain-info          domain
+--rw delegation-pref?                uint8 {stateful}?
+--rw auth
|   +--rw (auth-type-selection)?
|   |   +--:(auth-key-chain)
|   |   |   +--rw key-chain?
|   |   |   |   key-chain:key-chain-ref
|   |   +--:(auth-key)
|   |   |   +--rw crypto-algorithm          identityref
|   |   |   +--rw (key-string-style)?
|   |   |   |   +--:(keystring)
|   |   |   |   |   +--rw keystring?          string
|   |   |   |   +--:(hexadecimal)
|   |   |   |       {key-chain:hex-key-string}?
|   |   |       +--rw hexadecimal-string?
|   |   |       |   yang:hex-string
|   |   +--:(auth-tls) {tls}?

```

```

|           +--rw (role)?
|           +--:(server)
|           |   +--rw tls-server
|           |   ...
|           +--:(client)
|           +--rw tls-client
|           ...
+--ro discontinuity-time?      yang:timestamp
+--ro initiate-session?       boolean
+--ro session-exists?         boolean
+--ro session-up-time?        yang:timestamp
+--ro session-fail-time?      yang:timestamp
+--ro session-fail-up-time?   yang:timestamp
+--ro sessions
    +--ro session* [initiator]
        +--...

```

[5.4.](#) The Session Lists

The session list contains PCEP sessions that the PCEP entity (PCE or PCC) is currently participating in. The statistics in session are semantically different from those in peer since the former applies to the current session only, whereas the latter is the aggregate for all sessions that have existed to that peer.

Although [\[RFC5440\]](#) forbids more than one active PCEP session between a given pair of PCEP entities at any given time, there is a window during session establishment where two sessions may exist for a given pair, one representing a session initiated by the local PCEP entity and the other representing a session initiated by the peer. When one of these sessions reaches the active state, then the other is discarded.

The data model for PCEP session presented in this document uses a flat list of sessions. Each session in the list is identified by its initiator. This index allows two sessions to exist transiently for a given peer, as discussed above.

Internet-Draft

PCE-YANG

January 2022

```

module: ietf-pcep
  +--rw pcep!
    +--rw entity
      +--...
      +--rw peers
        +--rw peer* [addr]
          +--...
          +--ro sessions
            +--ro session* [initiator]
              +--ro initiator                pcep-initiator
              +--ro role?
              |      -> /pcep/entity/role
              +--ro state-last-change?      yang:timestamp
              +--ro state?
              |      pcep-sess-state
              +--ro session-creation?      yang:timestamp
              +--ro connect-retry?         yang:counter32
              +--ro local-id?              uint8
              +--ro remote-id?             uint8
              +--ro keepalive-timer?       uint8
              +--ro peer-keepalive-timer?  uint8
              +--ro dead-timer?            uint8
              +--ro peer-dead-timer?       uint8
              +--ro ka-hold-time-rem?      uint8
              +--ro overloaded?            boolean
              +--ro overloaded-timestamp?  yang:timestamp
              +--ro overload-time?         uint32
              +--ro peer-overloaded?       boolean
              +--ro peer-overloaded-timestamp? yang:timestamp
              +--ro peer-overload-time?    uint32
              +--ro lspdb-sync?            sync-state
              |      {stateful}?
              +--ro recv-db-ver?           uint64
              |      {stateful,sync-opt}?
              +--ro of-list {objective-function}?
              |  +--ro objective-function* [of]
              |  +--ro of      identityref
              +--ro pst-list
              |  +--ro path-setup-type* [pst]
              |  +--ro pst      identityref

```

```

+--ro assoc-type-list {association}?
|   +--ro assoc-type* [at]
|       +--ro at      identityref
+--ro speaker-entity-id?          string
    {sync-opt}?

```

5.5. Notifications

This YANG model defines a list of notifications to inform client of important events detected during the protocol operation. The notifications defined cover the PCEP MIB [\[RFC7420\]](#) notifications.

notifications:

```

+---n pcep-session-up
|   +--ro peer-addr?          -> /pcep/entity/peers/peer/addr
|   +--ro session-initiator?
|       |   -> /pcep/entity/peers/peer/sessions/session/initiator
|   +--ro state-last-change?  yang:timestamp
|   +--ro state?              pcep-sess-state
+---n pcep-session-down
|   +--ro peer-addr?          -> /pcep/entity/peers/peer/addr
|   +--ro session-initiator?  pcep-initiator
|   +--ro state-last-change?  yang:timestamp
|   +--ro state?              pcep-sess-state
+---n pcep-session-local-overload
|   +--ro peer-addr?          -> /pcep/entity/peers/peer/addr
|   +--ro session-initiator?
|       |   -> /pcep/entity/peers/peer/sessions/session/initiator
|   +--ro overloaded?         boolean
|   +--ro overloaded-timestamp? yang:timestamp
|   +--ro overload-time?      uint32
+---n pcep-session-local-overload-clear
|   +--ro peer-addr?
|       |   -> /pcep/entity/peers/peer/addr
|   +--ro overloaded?         boolean
|   +--ro overloaded-clear-timestamp? yang:timestamp
+---n pcep-session-peer-overload
|   +--ro peer-addr?
|       |   -> /pcep/entity/peers/peer/addr

```

```

|   +--ro session-initiator?
|   |       -> /pcep/entity/peers/peer/sessions/session/initiator
|   +--ro peer-overloaded?          boolean
|   +--ro peer-overloaded-timestamp? yang:timestamp
|   +--ro peer-overload-time?       uint32
+---n pcep-session-peer-overload-clear
    +--ro peer-addr?
    |       -> /pcep/entity/peers/peer/addr
    +--ro peer-overloaded?          boolean
    +--ro peer-overloaded-clear-timestamp? yang:timestamp

```

5.6. RPC

This YANG model defines a RPC to trigger state resynchronization to a particular PCEP peer.

```

rpcs:
  +---x trigger-resync {stateful,sync-opt}?
  +---w input
  +---w pcc?   -> /pcep/entity/peers/peer/addr

```

6. The Design of PCEP Statistics Data Model

The module, "ietf-pcep-stats", augments the ietf-pcep module to include statistics at the PCEP peer and session level. It includes a RPC to reset statistics.

module: ietf-pcep-stats

```

augment /pcep:pcep/pcep:entity/pcep:peers/pcep:peer:
  +--ro num-sess-setup-ok?      yang:counter32
  +--ro num-sess-setup-fail?    yang:counter32
  +--ro pcep-stats
    +--ro discontinuity-time?    yang:timestamp
    +--ro rsp-time-avg?          uint32
    +--ro rsp-time-lwm?          uint32
    +--ro rsp-time-hwm?          uint32
    +--ro num-pcreq-sent?        yang:counter32
    +--ro num-pcreq-rcvd?        yang:counter32
    +--ro num-pcrep-sent?        yang:counter32
    +--ro num-pcrep-rcvd?        yang:counter32
    +--ro num-pcerr-sent?        yang:counter32

```

+++ro num-pcerr-rcvd?	yang:counter32
+++ro num-pcntf-sent?	yang:counter32
+++ro num-pcntf-rcvd?	yang:counter32
+++ro num-keepalive-sent?	yang:counter32
+++ro num-keepalive-rcvd?	yang:counter32
+++ro num-unknown-rcvd?	yang:counter32
+++ro num-corrupt-rcvd?	yang:counter32
+++ro num-req-sent?	yang:counter32
+++ro num-req-sent-pend-rep?	yang:counter32
+++ro num-req-sent-ero-rcvd?	yang:counter32
+++ro num-req-sent-nopath-rcvd?	yang:counter32
+++ro num-req-sent-cancel-rcvd?	yang:counter32
+++ro num-req-sent-error-rcvd?	yang:counter32
+++ro num-req-sent-timeout?	yang:counter32
+++ro num-req-sent-cancel-sent?	yang:counter32
+++ro num-req-rcvd?	yang:counter32
+++ro num-req-rcvd-pend-rep?	yang:counter32
+++ro num-req-rcvd-ero-sent?	yang:counter32
+++ro num-req-rcvd-nopath-sent?	yang:counter32
+++ro num-req-rcvd-cancel-sent?	yang:counter32
+++ro num-req-rcvd-error-sent?	yang:counter32
+++ro num-req-rcvd-cancel-rcvd?	yang:counter32

+++ro num-rep-rcvd-unknown?	yang:counter32
+++ro num-req-rcvd-unknown?	yang:counter32
+++ro svec {pcep:svec}?	
+++ro num-svec-sent?	yang:counter32
+++ro num-svec-req-sent?	yang:counter32
+++ro num-svec-rcvd?	yang:counter32
+++ro num-svec-req-rcvd?	yang:counter32
+++ro stateful {pcep:stateful}?	
+++ro num-pcrpt-sent?	yang:counter32
+++ro num-pcrpt-rcvd?	yang:counter32
+++ro num-pcupd-sent?	yang:counter32
+++ro num-pcupd-rcvd?	yang:counter32
+++ro num-rpt-sent?	yang:counter32
+++ro num-rpt-rcvd?	yang:counter32
+++ro num-rpt-rcvd-error-sent?	yang:counter32
+++ro num-upd-sent?	yang:counter32
+++ro num-upd-rcvd?	yang:counter32
+++ro num-upd-rcvd-unknown?	yang:counter32
+++ro num-upd-rcvd-undelgated?	yang:counter32

```

|   +--ro num-upd-rcvd-error-sent?      yang:counter32
|   +--ro initiation {pcep:pce-initiated}?
|       +--ro num-pcinitiate-sent?      yang:counter32
|       +--ro num-pcinitiate-rcvd?      yang:counter32
|       +--ro num-initiate-sent?        yang:counter32
|       +--ro num-initiate-rcvd?        yang:counter32
|       +--ro num-initiate-rcvd-error-sent? yang:counter32
+--ro path-key {pcep:path-key}?
|   +--ro num-unknown-path-key?          yang:counter32
|   +--ro num-exp-path-key?              yang:counter32
|   +--ro num-dup-path-key?              yang:counter32
|   +--ro num-path-key-no-attempt?       yang:counter32
+--ro num-req-sent-closed?                yang:counter32
+--ro num-req-rcvd-closed?                yang:counter32
augment /pcep:pcep/pcep:entity/pcep:peers/pcep:peer/pcep:sessions
/pcep:session:
+--ro pcep-stats
    +--ro discontinuity-time?             yang:timestamp
    +--ro rsp-time-avg?                   uint32
    +--ro rsp-time-lwm?                   uint32
    +--ro rsp-time-hwm?                   uint32
    +--ro num-pcreq-sent?                 yang:counter32
    +--ro num-pcreq-rcvd?                 yang:counter32
    +--ro num-pcrep-sent?                 yang:counter32
    +--ro num-pcrep-rcvd?                 yang:counter32
    +--ro num-pcerr-sent?                 yang:counter32
    +--ro num-pcerr-rcvd?                 yang:counter32
    +--ro num-pcntf-sent?                 yang:counter32
    +--ro num-pcntf-rcvd?                 yang:counter32

```

```

+--ro num-keepalive-sent?                yang:counter32
+--ro num-keepalive-rcvd?                yang:counter32
+--ro num-unknown-rcvd?                  yang:counter32
+--ro num-corrupt-rcvd?                  yang:counter32
+--ro num-req-sent?                      yang:counter32
+--ro num-req-sent-pend-rep?              yang:counter32
+--ro num-req-sent-ero-rcvd?              yang:counter32
+--ro num-req-sent-nopath-rcvd?           yang:counter32
+--ro num-req-sent-cancel-rcvd?           yang:counter32
+--ro num-req-sent-error-rcvd?            yang:counter32
+--ro num-req-sent-timeout?               yang:counter32
+--ro num-req-sent-cancel-sent?           yang:counter32

```

```

+--ro num-req-rcvd?                yang:counter32
+--ro num-req-rcvd-pend-rep?       yang:counter32
+--ro num-req-rcvd-ero-sent?       yang:counter32
+--ro num-req-rcvd-nopath-sent?    yang:counter32
+--ro num-req-rcvd-cancel-sent?    yang:counter32
+--ro num-req-rcvd-error-sent?     yang:counter32
+--ro num-req-rcvd-cancel-rcvd?    yang:counter32
+--ro num-rep-rcvd-unknown?        yang:counter32
+--ro num-req-rcvd-unknown?        yang:counter32
+--ro svec {pcep:svec}?
| +--ro num-svec-sent?             yang:counter32
| +--ro num-svec-req-sent?         yang:counter32
| +--ro num-svec-rcvd?             yang:counter32
| +--ro num-svec-req-rcvd?         yang:counter32
+--ro stateful {pcep:stateful}?
| +--ro num-pcrpt-sent?            yang:counter32
| +--ro num-pcrpt-rcvd?            yang:counter32
| +--ro num-pcupd-sent?            yang:counter32
| +--ro num-pcupd-rcvd?            yang:counter32
| +--ro num-rpt-sent?              yang:counter32
| +--ro num-rpt-rcvd?              yang:counter32
| +--ro num-rpt-rcvd-error-sent?   yang:counter32
| +--ro num-upd-sent?              yang:counter32
| +--ro num-upd-rcvd?              yang:counter32
| +--ro num-upd-rcvd-unknown?      yang:counter32
| +--ro num-upd-rcvd-undelagated?  yang:counter32
| +--ro num-upd-rcvd-error-sent?   yang:counter32
| +--ro initiation {pcep:pce-initiated}?
|   +--ro num-pcinitiate-sent?     yang:counter32
|   +--ro num-pcinitiate-rcvd?     yang:counter32
|   +--ro num-initiate-sent?       yang:counter32
|   +--ro num-initiate-rcvd?       yang:counter32
|   +--ro num-initiate-rcvd-error-sent? yang:counter32
+--ro path-key {pcep:path-key}?
  +--ro num-unknown-path-key?      yang:counter32
  +--ro num-exp-path-key?          yang:counter32

```

```

+--ro num-dup-path-key?            yang:counter32
+--ro num-path-key-no-attempt?     yang:counter32

```

rpcs:

```

+---x statistics-reset

```



```

+---w input
  +---w (peer-or-all)?
    +---:(peer)
      | +---w peer-addr?
      |           -> /pcep:pcep/entity/peers/peer/addr
    +---:(all)

```

[7.](#) Advanced PCE Features

This document contains a specification of the base PCEP YANG module, "ietf-pcep" which provides the basic PCEP [[RFC5440](#)] data model.

This document further handles advanced PCE features like -

- * Capability and Scope
- * Domain information (local/neighbour)
- * Path-Key
- * Objective Function (OF)
- * Global Concurrent Optimization (GCO)
- * P2MP
- * GMPLS
- * Inter-Layer
- * Stateful PCE
- * Segment Routing (SR)
- * Authentication including PCEPS (TLS)

[7.1.](#) Stateful PCE's LSP-DB

In the operational datastore of stateful PCE, the list of LSP state are maintained in the LSP-DB. The key is the PLSP-ID and the PCC's IP address.

The PCEP data model contains the operational state of LSPs (/pcep/entity/lsp-db/lsp/) with PCEP specific attributes. The generic TE attributes of the LSP are defined in [[I-D.ietf-teas-yang-te](#)]. A reference to LSP state in TE model is maintained.

[8.](#) Other Considerations

[8.1.](#) PCEP over TLS (PCEPS)

[RFC8253] describe the use of TLS v1.2 [[RFC5246](#)] or later in PCEP. The peer acting as the PCEP client must act as the TLS client. The TLS client actively opens the TLS connection and the TLS server passively listens for the incoming TLS connections. The well-known TCP port number 4189 is used by PCEP servers to listen for TCP connections established by PCEP over TLS clients. The TLS client sends the TLS ClientHello message to begin the TLS handshake. The TLS server sends a CertificateRequest in order to request a certificate from the TLS client. Once the TLS handshake has finished, the client and the server begin to exchange PCEP messages. Client and server identity verification is done before the PCEP open message is sent. This means that the identity verification is completed before the PCEP session is started.

Note that, a PCEP speaker could act as both a client (PCC) and a server (PCE). The role within the context of a PCEP session is determined by the relationship it has with its peer (the same holds good for TLS as well).

[9.](#) PCEP YANG Modules

[9.1.](#) ietf-pcep module

RFC Ed.: In this section, replace all occurrences of 'XXXX' with the actual RFC number and all occurrences of the revision date below with the date of RFC publication (and remove this note).

```
<CODE BEGINS> file "ietf-pcep@2022-01-25.yang"
module ietf-pcep {
  yang-version 1.1;
  namespace "urn:ietf:params:xml:ns:yang:ietf-pcep";
  prefix pcep;

  import ietf-inet-types {
    prefix inet;
    reference
      "RFC 6991: Common YANG Data Types";
  }
```

Internet-Draft

PCE-YANG

January 2022

```
import ietf-yang-types {
  prefix yang;
  reference
    "RFC 6991: Common YANG Data Types";
}
import ietf-te-types {
  prefix te-types;
  reference
    "RFC 8776: Common YANG Data Types for Traffic Engineering";
}
import ietf-key-chain {
  prefix key-chain;
  reference
    "RFC 8177: YANG Data Model for Key Chains";
}
import ietf-netconf-acm {
  prefix nacm;
  reference
    "RFC 8341: Network Configuration Protocol (NETCONF) Access
    Control Model";
}
import ietf-tls-server {
  prefix tlss;
  reference
    "I-D.ietf-netconf-tls-client-server: YANG Groupings for TLS
    Clients and TLS Servers";
}
import ietf-tls-client {
  prefix tlsc;
  reference
    "I-D.ietf-netconf-tls-client-server: YANG Groupings for TLS
    Clients and TLS Servers";
}
import ietf-ospf {
  prefix ospf;
  reference
    "I-D.ietf-ospf-yang: YANG Data Model for OSPF Protocol";
}
import ietf-isis {
  prefix isis;
  reference
    "I-D.ietf-isis-yang-isis-cfg: YANG Data Model for IS-IS
```

```
        Protocol";
    }

    organization
        "IETF PCE (Path Computation Element) Working Group";
    contact
```

Dhody, et al.

Expires 29 July 2022

[Page 24]

Internet-Draft

PCE-YANG

January 2022

```
    "WG Web:  <https://datatracker.ietf.org/wg/pce/about/>
    WG List:  <mailto:pce@ietf.org>
    Editor:    Dhruv Dhody
               <mailto:dhruv.ietf@gmail.com>";
description
    "The YANG module defines a generic configuration and
    operational model for PCEP.

    The key words 'MUST', 'MUST NOT', 'REQUIRED', 'SHALL', 'SHALL
    NOT', 'SHOULD', 'SHOULD NOT', 'RECOMMENDED', 'NOT RECOMMENDED',
    'MAY', and 'OPTIONAL' in this document are to be interpreted as
    described in BCP 14 (RFC 2119) (RFC 8174) when, and only when,
    they appear in all capitals, as shown here.

    Copyright (c) 2022 IETF Trust and the persons identified as
    authors of the code.  All rights reserved.

    Redistribution and use in source and binary forms, with or
    without modification, is permitted pursuant to, and subject
    to the license terms contained in, the Revised BSD License
    set forth in Section 4.c of the IETF Trust's Legal Provisions
    Relating to IETF Documents
    (https://trustee.ietf.org/license-info).

    This version of this YANG module is part of RFC XXXX; see the
    RFC itself for full legal notices.";

revision 2022-01-25 {
    description
        "Initial revision.";
    reference
        "RFC XXXX:  A YANG Data Model for Path Computation
        Element Communications Protocol (PCEP)";
}
```

```

/*
 * Typedefs
 */

typedef pcep-role {
    type enumeration {
        enum unknown {
            value 0;
            description
                "An unknown role";
        }
        enum pcc {
            value 1;

```

```

        description
            "The role of a Path Computation Client";
    }
    enum pce {
        value 2;
        description
            "The role of Path Computation Element";
    }
    enum pcc-and-pce {
        value 3;
        description
            "The role of both Path Computation Client and
            Path Computation Element";
    }
}
description
    "The role of a PCEP speaker.
    Takes one of the following values
    - unknown(0): the role is not known.
    - pcc(1): the role is of a Path Computation
      Client (PCC).
    - pce(2): the role is of a Path Computation
      Server (PCE).
    - pcc-and-pce(3): the role is of both a PCC and
      a PCE.";
reference
    "RFC 5440: Path Computation Element (PCE) Communication
    Protocol (PCEP)";

```

```

}

typedef pcep-oper-status {
  type enumeration {
    enum oper-status-up {
      value 1;
      description
        "The PCEP entity is active";
    }
    enum oper-status-down {
      value 2;
      description
        "The PCEP entity is inactive";
    }
    enum oper-status-going-up {
      value 3;
      description
        "The PCEP entity is activating";
    }
    enum oper-status-going-down {

```

```

      value 4;
      description
        "The PCEP entity is deactivating";
    }
    enum oper-status-failed {
      value 5;
      description
        "The PCEP entity has failed and will recover
        when possible.";
    }
    enum oper-status-failed-perm {
      value 6;
      description
        "The PCEP entity has failed and will not recover
        without operator intervention";
    }
  }
  description
    "The operational status of the PCEP entity.
    Takes one of the following values
    - oper-status-up(1): Active

```

- oper-status-down(2): Inactive
- oper-status-going-up(3): Activating
- oper-status-going-down(4): Deactivating
- oper-status-failed(5): Failed
- oper-status-failed-perm(6): Failed Permanently";

reference

"[RFC 5440](#): Path Computation Element (PCE) Communication Protocol (PCEP)";

}

typedef pcep-initiator {

 type enumeration {

 enum local {

 value 1;

 description

 "The local PCEP entity initiated the session";

 }

 enum remote {

 value 2;

 description

 "The remote PCEP peer initiated the session";

 }

 }

 description

 "The initiator of the session, that is, whether the TCP connection was initiated by the local PCEP entity or the remote peer.

Takes one of the following values

- local(1): Initiated locally
- remote(2): Initiated remotely";

}

typedef pcep-sess-state {

 type enumeration {

 enum tcp-pending {

 value 1;

 description

 "The TCPPending state of PCEP session.";

 }

 enum open-wait {

 value 2;

```

        description
            "The OpenWait state of PCEP session.";
    }
    enum keep-wait {
        value 3;
        description
            "The KeepWait state of PCEP session.";
    }
    enum session-up {
        value 4;
        description
            "The SessionUP state of PCEP session.";
    }
}
description
    "The current state of the session.
    The set of possible states excludes the idle state
    since entries do not exist in the idle state.
    Takes one of the following values
    - tcp-pending(1): PCEP TCPPending state
    - open-wait(2): PCEP OpenWait state
    - keep-wait(3): PCEP KeepWait state
    - session-up(4): PCEP SessionUP state";
reference
    "RFC 5440: Path Computation Element (PCE) Communication
    Protocol (PCEP)";
}

typedef domain-ospf-area {
    type ospf:area-id-type;
    description
        "OSPF Area ID.";
    reference
        "I-D.ietf-ospf-yang: YANG Data Model for OSPF Protocol";
}

typedef domain-isis-area {
    type isis:area-address;
    description
        "IS-IS Area ID.";
    reference

```



```

    "I-D.ietf-isis-yang-isis-cfg: YANG Data Model for IS-IS
    Protocol";
}

typedef domain-as {
    type inet:as-number;
    description
        "Autonomous System number.";
}

typedef domain {
    type union {
        type domain-ospf-area;
        type domain-isis-area;
        type domain-as;
    }
    description
        "The Domain Information";
}

typedef operational-state {
    type enumeration {
        enum down {
            value 0;
            description
                "not active.";
        }
        enum up {
            value 1;
            description
                "signalled.";
        }
        enum active {
            value 2;
            description
                "up and carrying traffic.";
        }
        enum going-down {
            value 3;
            description
                "LSP is being torn down, resources are

```

```

        being released.";
    }
    enum going-up {
        value 4;
        description
            "LSP is being signalled.";
    }
}
description
    "The operational status of the LSP";
reference
    "RFC 8231: Path Computation Element Communication Protocol
    (PCEP) Extensions for Stateful PCE";
}

typedef sync-state {
    type enumeration {
        enum pending {
            value 0;
            description
                "The state synchronization
                has not started.";
        }
        enum ongoing {
            value 1;
            description
                "The state synchronization
                is ongoing.";
        }
        enum finished {
            value 2;
            description
                "The state synchronization
                is finished.";
        }
    }
}
description
    "The LSP-DB state synchronization operational
    status.";
reference
    "RFC 8231: Path Computation Element Communication Protocol
    (PCEP) Extensions for Stateful PCE";
}

/*
 * Features
 */

```

Internet-Draft

PCE-YANG

January 2022

```
feature svec {
  description
    "Support synchronized path computation.";
  reference
    "RFC 5440: Path Computation Element (PCE) Communication
    Protocol (PCEP)";
}

feature gmpls {
  description
    "Support GMPLS.";
  reference
    "RFC 8779: PCEP extensions for GMPLS";
}

feature objective-function {
  description
    "Support OF as per RFC 5541.";
  reference
    "RFC 5541: Encoding of Objective Functions in the Path
    Computation Element Communication Protocol (PCEP)";
}

feature global-concurrent {
  description
    "Support Global Concurrent Optimization (GCO) as per RFC
    5557.";
  reference
    "RFC 5557: Path Computation Element Communication Protocol
    (PCEP) Requirements and Protocol Extensions in Support of
    Global Concurrent Optimization";
}

feature path-key {
  description
    "Support path-key as per RFC 5520.";
  reference
    "RFC 5520: Preserving Topology Confidentiality in Inter-
    Domain Path Computation Using a Path-Key-Based Mechanism";
}

feature p2mp {
  description
```

"Support Point-to-Multipoint (P2MP) as per [RFC 8306](#)";
reference
"[RFC 8306](#): Extensions to the Path Computation Element
Communication Protocol (PCEP) for Point-to-Multipoint
Traffic Engineering Label Switched Paths";

```
}

feature stateful {
  description
    "Support Stateful PCE as per RFC 8231";
  reference
    "RFC 8231: Path Computation Element Communication Protocol  
(PCEP) Extensions for Stateful PCE";
}

feature sync-opt {
  description
    "Support Stateful state synchronization optimization  
as per RFC 8232";
  reference
    "RFC 8232: Optimizations of Label Switched Path State  
Synchronization Procedures for a Stateful PCE";
}

feature pce-initiated {
  description
    "Support PCE-Initiated LSP as per  
RFC 8281";
  reference
    "RFC 8281: Path Computation Element Communication Protocol  
(PCEP) Extensions for PCE-Initiated LSP Setup in a Stateful  
PCE Model";
}

feature tls {
  description
    "Support PCEP over TLS as per RFC 8253";
  reference
    "RFC 8253: PCEPS: Usage of TLS to Provide a Secure Transport  
for the Path Computation Element Communication Protocol  
(PCEP)";
}
```

```

}

feature sr {
  description
    "Support Segment Routing (SR) for PCE.";
  reference
    "RFC 8664: Path Computation Element Communication Protocol
    (PCEP) Extensions for Segment Routing";
}

feature association {
  description

```

```

    "Support Association in PCEP.";
  reference
    "RFC 8697: Path Computation Element Communication Protocol
    (PCEP) Extensions for Establishing Relationships between
    Sets of Label Switched Paths (LSPs)";
}

/*
 * Identities
 */

identity domain-type {
  description
    "Base Domain Type for PCE";
}

identity ospf-area {
  base domain-type;
  description
    "The OSPF area.";
}

identity isis-area {
  base domain-type;
  description
    "The IS-IS area.";
}

identity autonomous-system {

```

```

    base domain-type;
    description
        "The Autonomous System (AS).";
}

identity lsp-error {
    if-feature "stateful";
    description
        "Base LSP error";
    reference
        "RFC 8231: Path Computation Element Communication Protocol
        (PCEP) Extensions for Stateful PCE";
}

identity no-error-lsp-error {
    if-feature "stateful";
    base lsp-error;
    description
        "No error, LSP is fine.";
}

```

```

    reference
        "RFC 8231: Path Computation Element Communication Protocol
        (PCEP) Extensions for Stateful PCE";
}

identity unknown-lsp-error {
    if-feature "stateful";
    base lsp-error;
    description
        "Unknown reason.";
    reference
        "RFC 8231: Path Computation Element Communication Protocol
        (PCEP) Extensions for Stateful PCE";
}

identity limit-lsp-error {
    if-feature "stateful";
    base lsp-error;
    description
        "Limit reached for PCE-controlled LSPs.";
    reference
        "RFC 8231: Path Computation Element Communication Protocol

```

```

        (PCEP) Extensions for Stateful PCE";
    }

    identity pending-lsp-error {
        if-feature "stateful";
        base lsp-error;
        description
            "Too many pending LSP update requests.";
        reference
            "RFC 8231: Path Computation Element Communication Protocol
            (PCEP) Extensions for Stateful PCE";
    }

    identity unacceptable-lsp-error {
        if-feature "stateful";
        base lsp-error;
        description
            "Unacceptable parameters.";
        reference
            "RFC 8231: Path Computation Element Communication Protocol
            (PCEP) Extensions for Stateful PCE";
    }

    identity internal-lsp-error {
        if-feature "stateful";
        base lsp-error;
    }

```

```

        description
            "Internal error.";
        reference
            "RFC 8231: Path Computation Element Communication Protocol
            (PCEP) Extensions for Stateful PCE";
    }

    identity admin-lsp-error {
        if-feature "stateful";
        base lsp-error;
        description
            "LSP administratively brought down.";
        reference
            "RFC 8231: Path Computation Element Communication Protocol
            (PCEP) Extensions for Stateful PCE";
    }

```

```

}

identity preempted-lsp-error {
  if-feature "stateful";
  base lsp-error;
  description
    "LSP preempted.";
  reference
    "RFC 8231: Path Computation Element Communication Protocol
    (PCEP) Extensions for Stateful PCE";
}

identity rsvp-lsp-error {
  if-feature "stateful";
  base lsp-error;
  description
    "RSVP signaling error.";
  reference
    "RFC 8231: Path Computation Element Communication Protocol
    (PCEP) Extensions for Stateful PCE";
}

/*
 * Groupings
 */

grouping pce-scope {
  description
    "This grouping defines PCE path computation scope
    information which maybe relevant to PCE selection.
    This information corresponds to PCE auto-discovery
    information.";
  reference

```

```

    "RFC 5088: OSPF Protocol Extensions for Path
    Computation Element (PCE) Discovery
    RFC 5089: IS-IS Protocol Extensions for Path
    Computation Element (PCE) Discovery";
  leaf path-scope {
    type bits {
      bit intra-area-scope {
        description

```



```

        "PCE can compute intra-area paths (L bit).";
    }
    bit inter-area-scope {
        description
            "PCE can compute inter-area paths (R bit).";
    }
    bit inter-area-scope-default {
        description
            "PCE can act as a default PCE for inter-area
            path computation. (Rd bit)";
    }
    bit inter-as-scope {
        description
            "PCE can compute inter-AS paths (S bit).";
    }
    bit inter-as-scope-default {
        description
            "PCE can act as a default PCE for inter-AS
            path computation (Sd bit).";
    }
    bit inter-layer-scope {
        description
            "PCE can compute inter-layer paths (Y bit).";
    }
}
description
    "The field corresponding to the path scope bits";
}
leaf intra-area-pref {
    type uint8 {
        range "0..7";
    }
    description
        "The PCE's preference for intra-area TE LSP
        computation (PrefL field). Where 7 reflects
        the highest preference.";
}
leaf inter-area-pref {
    type uint8 {
        range "0..7";
    }
}

```

}

```

        description
            "The PCE's preference for inter-area TE LSP
            computation (PrefR field). Where 7 reflects
            the highest preference.";
    }
    leaf inter-as-pref {
        type uint8 {
            range "0..7";
        }
        description
            "The PCE's preference for inter-AS TE LSP
            computation (PrefS field). Where 7 reflects
            the highest preference.";
    }
    leaf inter-layer-pref {
        type uint8 {
            range "0..7";
        }
        description
            "The PCE's preference for inter-layer TE LSP
            computation (PrefY field). Where 7 reflects
            the highest preference.";
    }
}

//pce-scope

grouping domain {
    description
        "This grouping specifies a Domain where the
        PCEP speaker has topology visibility.";
    leaf domain-type {
        type identityref {
            base domain-type;
        }
        description
            "The domain type.";
    }
    leaf domain-info {
        type domain;
        description
            "The domain Information.";
    }
}

//domain

```

```
grouping info {
  description
    "This grouping specifies all information which
    maybe relevant to both PCC and PCE.
    This information corresponds to PCE auto-discovery
    information.";
  container domains {
    description
      "The local domain for the PCEP entity";
    list domains {
      key "domain-type domain-info";
      description
        "The local domain.";
      uses domain {
        description
          "The local domain for the PCEP entity.";
      }
    }
  }
  container capability {
    description
      "The PCEP entity capability information of local
      PCEP entity. This maybe relevant to PCE selection
      as well. This information corresponds to PCE auto-
      discovery information.";
    reference
      "IANA OSPF: Path Computation Element (PCE) Capability
      Flags in Open Shortest Path First v2 (OSPFv2)
      Parameters
      RFC 5088: OSPF Protocol Extensions for Path
      Computation Element (PCE) Discovery
      RFC 5089: IS-IS Protocol Extensions for Path
      Computation Element (PCE) Discovery";
    leaf capability {
      type bits {
        bit gmpls {
          if-feature "gmpls";
          description
            "Path computation with GMPLS link
            constraints.";
        }
        bit bi-dir {
          description
            "Bidirectional path computation.";
        }
        bit diverse {
```

```
description
  "Diverse path computation.";
```

```
}
bit load-balance {
  description
    "Load-balanced path computation.";
}
bit synchronize {
  if-feature "svec";
  description
    "Synchronized paths computation.";
}
bit objective-function {
  if-feature "objective-function";
  description
    "Support for multiple objective functions.";
}
bit add-path-constraint {
  description
    "Support for additive path constraints (max
    hop count, etc.).";
}
bit prioritization {
  description
    "Support for request prioritization.";
}
bit multi-request {
  description
    "Support for multiple requests per message.";
}
bit global-concurrent {
  if-feature "global-concurrent";
  description
    "Support for Global Concurrent Optimization
    (GCO).";
}
bit p2mp {
  if-feature "p2mp";
  description
    "Support for P2MP path computation.";
}
```

```

bit active {
    if-feature "stateful";
    description
        "Support for active stateful PCE.";
}
bit passive {
    if-feature "stateful";
    description
        "Support for passive stateful PCE.";
}

```

```

}
bit p2mp-active {
    if-feature "stateful";
    if-feature "p2mp";
    description
        "Support for active stateful PCE for P2MP.";
}
bit p2mp-passive {
    if-feature "stateful";
    if-feature "p2mp";
    description
        "Support for passive stateful PCE for P2MP.";
}
bit p2mp-pce-initiated {
    if-feature "stateful";
    if-feature "pce-initiated";
    if-feature "p2mp";
    description
        "Support for PCE-initiated LSP for P2MP.";
}
}
description
    "The bits string indicating the capabilities";
reference
    "IANA OSPF: Path Computation Element (PCE) Capability
    Flags in Open Shortest Path First v2 (OSPFv2)
    Parameters
    RFC 5088: OSPF Protocol Extensions for Path
    Computation Element (PCE) Discovery
    RFC 5089: IS-IS Protocol Extensions for Path
    Computation Element (PCE) Discovery";
}

```

```

leaf pce-initiated {
    if-feature "pce-initiated";
    type boolean;
    description
        "Set to true if PCE-initiated LSP capability is
        enabled.";
    reference
        "RFC 8281: Path Computation Element Communication
        Protocol (PCEP) Extensions for PCE-Initiated LSP
        Setup in a Stateful PCE Model";
}
leaf include-db-ver {
    if-feature "stateful";
    if-feature "sync-opt";
    type boolean;
    description

```

```

        "Support inclusion of LSP-DB-VERSION
        in LSP object";
    reference
        "RFC 8232: Optimizations of Label Switched Path State
        Synchronization Procedures for a Stateful PCE";
}
leaf trigger-resync {
    if-feature "stateful";
    if-feature "sync-opt";
    type boolean;
    description
        "Support PCE triggered re-synchronization";
    reference
        "RFC 8232: Optimizations of Label Switched Path State
        Synchronization Procedures for a Stateful PCE";
}
leaf trigger-initial-sync {
    if-feature "stateful";
    if-feature "sync-opt";
    type boolean;
    description
        "PCE triggered initial synchronization";
    reference
        "RFC 8232: Optimizations of Label Switched Path State
        Synchronization Procedures for a Stateful PCE";
}

```

```

}
leaf incremental-sync {
  if-feature "stateful";
  if-feature "sync-opt";
  type boolean;
  description
    "Support incremental (delta) sync";
  reference
    "RFC 8232: Optimizations of Label Switched Path State
    Synchronization Procedures for a Stateful PCE";
}
container sr {
  if-feature "sr";
  description
    "If segment routing is supported";
  reference
    "RFC 8664: Path Computation Element Communication Protocol
    (PCEP) Extensions for Segment Routing";
  leaf enabled {
    type boolean;
    description
      "Set to true if SR is enabled";
  }
}

```

```

leaf msd-limit {
  type boolean;
  default "false";
  description
    "True indicates no limit on MSD, the
    leaf msd is ignored";
}
leaf nai {
  type boolean;
  default "false";
  description
    "True indicates capability to resolve Node or
    Adjacency Identifier (NAI) to Segment
    Identifier (SID)";
}
}
//sr
}

```

```

//capability
leaf msd {
    if-feature "sr";
    type uint8;
    description
        "Maximum SID Depth for SR";
    reference
        "RFC 8664: Path Computation Element Communication Protocol
        (PCEP) Extensions for Segment Routing";
}
}

//info

grouping pce-info {
    description
        "This grouping specifies all PCE information
        which maybe relevant to the PCE selection.
        This information corresponds to PCE auto-discovery
        information.";
    container scope {
        description
            "The path computation scope";
        uses pce-scope;
    }
    container neighbour-domains {
        description
            "The list of neighbour PCE-Domain
            toward which a PCE can compute
            paths";
    }
}

```

```

    list domains {
        key "domain-type domain-info";
        description
            "The neighbour domain.";
        uses domain {
            description
                "The PCE neighbour domain.";
        }
    }
}
}
}

```



```

//pce-info

grouping notification-instance-hdr {
  description
    "This group describes common instance specific data
    for notifications.";
  leaf peer-addr {
    type leafref {
      path "/pcep/entity/peers/peer/addr";
    }
    description
      "Reference to peer address";
  }
}

// notification-instance-hdr

grouping notification-session-hdr {
  description
    "This group describes common session instance specific
    data for notifications.";
  leaf session-initiator {
    type leafref {
      path "/pcep/entity/peers/peer/sessions/"
        + "session/initiator";
    }
    description
      "Reference to pcep session initiator leaf";
  }
}

// notification-session-hdr

grouping of-list {
  description
    "List of Objective Functions (OF)";

```

```

reference
  "RFC 5541: Encoding of Objective Functions in the Path
  Computation Element Communication Protocol (PCEP)";
list objective-function {

```

```

    key "of";
    description
        "The list of authorized OF";
    leaf of {
        type identityref {
            base te-types:objective-function-type;
        }
        description
            "The OF authorized";
    }
}

/*
 * Configuration data nodes
 */

container pcep {
    presence "The PCEP is enabled";
    description
        "Parameters for list of configured PCEP entities
        on the device.";
    container entity {
        description
            "The configured PCEP entity on the device.";
        leaf addr {
            type inet:ip-address-no-zone;
            mandatory true;
            description
                "The local Internet address of this PCEP entity.
                If operating as a PCE server, the PCEP entity
                listens on this address. If operating as a PCC,
                the PCEP entity binds outgoing TCP connections
                to this address. It is possible for the PCEP entity
                to operate both as a PCC and a PCE Server, in which
                case it uses this address both to listen for incoming
                TCP connections and to bind outgoing TCP connections.";
        }
        leaf enabled {
            type boolean;
            default "true";
            description
                "The administrative status of this PCEP
                Entity; set to true when UP.";
        }
    }
}

```

```
}
leaf role {
  type pcep-role;
  mandatory true;
  description
    "The role that this entity can play.
    Takes one of the following values.
    - unknown(0): this PCEP Entity role is not
    known.
    - pcc(1): this PCEP Entity is a PCC.
    - pce(2): this PCEP Entity is a PCE.
    - pcc-and-pce(3): this PCEP Entity is both
    a PCC and a PCE.";
}
leaf description {
  type string;
  description
    "Description of the PCEP entity configured
    by the user";
}
leaf speaker-entity-id {
  if-feature "sync-opt";
  type string;
  description
    "The Speaker Entity Identifier";
  reference
    "RFC 8232: Optimizations of Label Switched
    Path State Synchronization Procedures for
    a Stateful PCE";
}
leaf admin-status {
  type boolean;
  default "true";
  description
    "The administrative status of this PCEP Entity.
    The value true represents admin status as up.
    This is the desired operational status as
    currently set by an operator or by default in
    the implementation. The value of oper-status
    represents the current status of an attempt to
    reach this desired status.";
}
leaf index {
  type uint32;
  config false;
  description
    "The index of the operational PCEP entity";
```

}

```
leaf oper-status {
  type pcep-oper-status;
  config false;
  description
    "The operational status of the PCEP entity.
    Takes one of the following values.
    - oper-status-up(1): the PCEP entity is active.
    - oper-status-down(2): the PCEP entity is inactive.
    - oper-status-going-up(3): the PCEP entity is
    activating.
    - oper-status-going-down(4): the PCEP entity is
    deactivating.
    - oper-status-failed(5): the PCEP entity has
    failed and will recover when possible.
    - oper-status-failed-perm(6): the PCEP entity
    has failed and will not recover without
    operator intervention.";
}
uses info {
  description
    "Local PCEP entity information";
}
container pce-info {
  when "../role = 'pce'"
    + "or "
    + "../role = 'pcc-and-pce'" {
    description
      "These fields are applicable when the role is PCE.";
  }
  description
    "The Local PCE Entity PCE information";
  uses pce-info {
    description
      "Local PCE information";
  }
  container path-key {
    if-feature "path-key";
    description
      "Path-Key Configuration";
    reference
```

"[RFC 5520](#): Preserving Topology Confidentiality in Inter-Domain Path Computation Using a Path-Key-Based Mechanism";

```

leaf enabled {
    type boolean;
    description
        "Enabled or Disabled; set to true when Enabled";
}
leaf discard-timer {

```

```

    type uint32;
    units "minutes";
    default "10";
    description
        "A timer to discard unwanted path-keys";
}
leaf reuse-time {
    type uint32;
    units "minutes";
    default "30";
    description
        "A time after which the path-keys could be reused";
}
leaf pce-id {
    type inet:ip-address-no-zone;
    description
        "PCE Address to be used in each Path-Key Subobject (PKS)";
}
}
}
leaf connect-timer {
    type uint16 {
        range "1..65535";
    }
    units "seconds";
    default "60";
    description
        "The time in seconds that the PCEP entity will wait to establish a TCP connection with a peer. If a TCP connection is not established within this time then PCEP aborts the session setup attempt.";
    reference

```

```

    "RFC 5440: Path Computation Element (PCE) Communication
    Protocol (PCEP)";
}
leaf connect-max-retry {
    type uint32;
    default "5";
    description
        "The maximum number of times the system tries to
        establish a TCP connection to a peer before the
        session with the peer transitions to the idle
        state.";
    reference
        "RFC 5440: Path Computation Element (PCE) Communication
        Protocol (PCEP)";
}

```

```

leaf init-back-off-timer {
    type uint16 {
        range "1..65535";
    }
    units "seconds";
    description
        "The initial back-off time in seconds for retrying
        a failed session setup attempt to a peer.
        The back-off time increases for each failed
        session setup attempt, until a maximum back-off
        time is reached. The maximum back-off time is the
        max-back-off-timer leaf.";
    reference
        "RFC 5440: Path Computation Element (PCE) Communication
        Protocol (PCEP)";
}
leaf max-back-off-timer {
    type uint32;
    units "seconds";
    description
        "The maximum back-off time in seconds for retrying
        a failed session setup attempt to a peer.
        The back-off time increases for each failed session
        setup attempt, until this maximum value is reached.
        Session setup attempts then repeat periodically
        without any further increase in back-off time.";
}

```

```

        reference
        "RFC 5440: Path Computation Element (PCE) Communication
        Protocol (PCEP)";
    }
    leaf open-wait-timer {
        type uint16;
        units "seconds";
        config false;
        description
            "The time in seconds that the PCEP entity will wait
            to receive an Open message from a peer after the
            TCP connection has come up.
            If no Open message is received within this time then
            PCEP terminates the TCP connection and deletes the
            associated sessions.";
        reference
        "RFC 5440: Path Computation Element (PCE) Communication
        Protocol (PCEP)";
    }
    leaf keep-wait-timer {
        type uint16;
        units "seconds";

```

```

        config false;
        description
            "The time in seconds that the PCEP entity will wait
            to receive a Keepalive or PCErr message from a peer
            during session initialization after receiving an
            Open message. If no Keepalive or PCErr message is
            received within this time then PCEP terminates the
            TCP connection and deletes the associated
            sessions.";
        reference
        "RFC 5440: Path Computation Element (PCE) Communication
        Protocol (PCEP)";
    }
    leaf keepalive-timer {
        type uint8;
        units "seconds";
        default "30";
        description
            "The Keepalive timer that this PCEP

```

entity will propose in the initial Open message of each session it is involved in. This is the maximum time between two consecutive messages sent to a peer. Zero means that the PCEP entity prefers not to send Keepalives at all.

Note that the actual Keepalive transmission intervals, in either direction of an active PCEP session, are determined by negotiation between the peers as specified by [RFC 5440](#), and so may differ from this configured value.";

reference

"[RFC 5440](#): Path Computation Element (PCE) Communication Protocol (PCEP)";

}

leaf dead-timer {

type uint8;

units "seconds";

must '(. > ../keepalive-timer)' {

error-message "The DeadTimer must be "
+ "larger than the Keepalive timer";

}

default "120";

description

"The DeadTimer that this PCEP entity will propose in the initial Open message of each session it is involved in. This is the time after which a peer should declare a session down if it does not receive any PCEP messages. Zero suggests that the peer does not run a DeadTimer at all.";

reference

"[RFC 5440](#): Path Computation Element (PCE) Communication Protocol (PCEP)";

}

leaf allow-negotiation {

type boolean;

default "true";

description

"Whether the PCEP entity will permit negotiation of session parameters.";

}

leaf max-keepalive-timer {


```

    type uint8;
    units "seconds";
    description
        "The maximum value that this PCEP entity will
        accept from a peer for the interval between
        Keepalive transmissions. Zero means that the PCEP
        entity will allow no Keepalive transmission at
        all.";
}
leaf max-dead-timer {
    type uint8;
    units "seconds";
    description
        "The maximum value in seconds, that this PCEP
        entity will accept from a peer for the DeadTimer.
        Zero means that the PCEP entity will allow not
        running a DeadTimer.";
}
leaf min-keepalive-timer {
    type uint8;
    units "seconds";
    description
        "The minimum value in seconds, that this PCEP
        entity will accept for the interval between
        Keepalive transmissions. Zero means that the
        PCEP entity insists on no Keepalive
        transmission at all.";
}
leaf min-dead-timer {
    type uint8;
    units "seconds";
    description
        "The minimum value in seconds, that this PCEP
        entity will accept for the DeadTimer. Zero
        means that the PCEP entity insists on not
        running a DeadTimer.";
}

```

```

}
leaf sync-timer {
    if-feature "svec";
    type uint16;
    units "seconds";
}

```

```

default "60";
description
    "The value of SyncTimer in seconds is used in the
    case of synchronized path computation request
    using the SVEC object. Consider the case where a
    PCReq message is received by a PCE that contains
    the SVEC object referring to M synchronized path
    computation requests. If after the expiration of
    the SyncTimer all the M path computation requests
    have not been, received a protocol error is
    triggered and the PCE must cancel the whole set
    of path computation requests.
    The aim of the SyncTimer is to avoid the storage
    of unused synchronized requests should one of
    them get lost for some reasons (for example, a
    misbehaving PCC).
    Zero means that the PCEP entity does not use the
    SyncTimer.";
reference
    "RFC 5440: Path Computation Element (PCE)
    Communication Protocol (PCEP)";
}
leaf request-timer {
    type uint16 {
        range "1..65535";
    }
    units "seconds";
    description
        "The maximum time that the PCEP entity will wait
        for a response to a PCReq message.";
}
leaf max-sessions {
    type uint32;
    description
        "Maximum number of sessions involving this PCEP
        entity that can exist at any time.";
}
leaf max-unknown-reqs {
    type uint32;
    default "5";
    description
        "The maximum number of unrecognized requests and
        replies that any session on this PCEP entity is

```

willing to accept per minute before terminating the session.

A PCRep message contains an unrecognized reply if it contains an RP object whose request ID does not correspond to any in-progress request sent by this PCEP entity.

A PCReq message contains an unrecognized request if it contains an RP object whose request ID is zero.";

reference

"[RFC 5440](#): Path Computation Element (PCE) Communication Protocol (PCEP)";

}

leaf max-unknown-msgs {

type uint32;

default "5";

description

"The maximum number of unknown messages that any session on this PCEP entity is willing to accept per minute before terminating the session.";

reference

"[RFC 5440](#): Path Computation Element (PCE) Communication Protocol (PCEP)";

}

leaf pcep-notification-max-rate {

type uint32;

mandatory true;

description

"This variable indicates the maximum number of notifications issued per second. If events occur more rapidly, the implementation may simply fail to emit these notifications during that period, or may queue them until an appropriate time. A value of 0 means no notifications are emitted and all should be discarded (that is, not queued).";

}

container stateful-parameter {

if-feature "stateful";

description

"The configured stateful PCE parameters";

leaf state-timeout {

type uint32;

units "seconds";

description

"When a PCEP session is terminated, a PCC waits for this time period before flushing LSP state associated with that PCEP session

Internet-Draft

PCE-YANG

January 2022

```
        and reverting to operator-defined default
        parameters or behaviours.";
    }
    leaf redelegation-timeout {
        when "../role = 'pcc'"
            + "or "
            + "../role = 'pcc-and-pce'" {
            description
                "This field is applicable when the role is
                PCC";
        }
        type uint32;
        units "seconds";
        description
            "When a PCEP session is terminated, a PCC
            waits for this time period before revoking
            LSP delegation to a PCE and attempting to
            redelegate LSPs associated with the
            terminated PCEP session to an alternate
            PCE.";
    }
    leaf rpt-non-pcep-lsp {
        when "../role = 'pcc'"
            + "or "
            + "../role = 'pcc-and-pce'" {
            description
                "This field is applicable when the role is
                PCC";
        }
        type boolean;
        default "true";
        description
            "If set, a PCC reports LSPs that are not
            controlled by any PCE (for example, LSPs
            that are statically configured at the
            PCC). ";
    }
    reference
        "RFC 8231: Path Computation Element Communication Protocol
        (PCEP) Extensions for Stateful PCE";
}
container of-list {
```

```

when "../role = 'pce'"
+ "or "
+ "../role = 'pcc-and-pce'" {
description
    "These field are applicable when the role is
    PCE";

```

```

}
if-feature "objective-function";
uses of-list;
description
    "The authorized OF-List at PCE for all peers";
}
container lsp-db {
    if-feature "stateful";
    config false;
    description
        "The LSP-DB";
    leaf db-ver {
        when "../role = 'pcc'"
        + "or "
        + "../role = 'pcc-and-pce'" {
            description
                "This field is applicable when the role is
                PCC";
        }
        if-feature "sync-opt";
        type uint64;
        description
            "The LSP State Database Version Number";
    }
    list association-list {
        if-feature "association";
        key "type id source global-source extended-id";
        description
            "List of all PCEP associations";
        reference
            "RFC 8697: Path Computation Element Communication
            Protocol (PCEP) Extensions for Establishing
            Relationships between Sets of Label Switched
            Paths (LSPs)";
        leaf type {

```

```

    type identityref {
      base te-types:association-type;
    }
    description
      "The PCEP Association Type";
    reference
      "IANA PCEP: ASSOCIATION Type Field in Path
      Computation Element Protocol (PCEP) Numbers";
  }
  leaf id {
    type uint16;
    description
      "PCEP Association ID";
  }

```

```

  }
  leaf source {
    type inet:ip-address-no-zone;
    description
      "PCEP Association Source.";
  }
  leaf global-source {
    type uint32;
    description
      "PCEP Global Association Source.";
  }
  leaf extended-id {
    type string;
    description
      "Additional information to support unique
      identification (Extended Association ID).";
  }
  list lsp {
    key "plsp-id pcc-id lsp-id";
    description
      "List of all LSP in this association";
    leaf plsp-id {
      type leafref {
        path "/pcep/entity/lsp-db/"
          + "lsp/plsp-id";
      }
      description
        "Reference to PLSP-ID in LSP-DB";
    }
  }

```

```

    }
    leaf pcc-id {
        type leafref {
            path "/pcep/entity/lsp-db/"
                + "lsp/pcc-id";
        }
        description
            "Reference to PCC-ID in LSP-DB";
    }
    leaf lsp-id {
        type leafref {
            path "/pcep/entity/lsp-db/"
                + "lsp/lsp-id";
        }
        description
            "Reference to LSP ID in LSP-DB";
    }
}
list lsp {

```

```

    key "plsp-id pcc-id lsp-id";
    description
        "List of all LSPs in LSP-DB";
    leaf plsp-id {
        type uint32 {
            range "1..1048575";
        }
        description
            "A PCEP-specific identifier for the LSP. A PCC
            creates a unique PLSP-ID for each LSP that is
            constant for the lifetime of a PCEP session.
            PLSP-ID is 20 bits with 0 and 0xFFFFF are
            reserved";
    }
    leaf pcc-id {
        type inet:ip-address-no-zone;
        description
            "The local internet address of the PCC, that
            generated the PLSP-ID.";
    }
    leaf source {

```

```

    type inet:ip-address-no-zone;
    description
      "Tunnel sender address extracted from
       LSP-IDENTIFIERS TLV";
    reference
      "RFC 8231: Path Computation Element
       Communication Protocol (PCEP) Extensions
       for Stateful PCE";
  }
  leaf destination {
    type inet:ip-address-no-zone;
    description
      "Tunnel endpoint address extracted from
       LSP-IDENTIFIERS TLV";
    reference
      "RFC 8231: Path Computation Element
       Communication Protocol (PCEP) Extensions
       for Stateful PCE";
  }
  leaf tunnel-id {
    type uint16;
    description
      "Tunnel identifier used in the LSP-IDENTIFIERS
       TLV that remains constant over the life
       of the tunnel.";
    reference
      "RFC 8231: Path Computation Element

```

```

      Communication Protocol (PCEP) Extensions
      for Stateful PCE";
    }
    leaf lsp-id {
      type uint16;
      description
        "Identifier used in the LSP-IDENTIFIERS TLV
         that can be changed to allow a sender to share
         resources with itself.";
      reference
        "RFC 8231: Path Computation Element
         Communication Protocol (PCEP) Extensions
         for Stateful PCE";
    }
  }

```



```

leaf extended-tunnel-id {
  type inet:ip-address-no-zone;
  description
    "Extended Tunnel ID of the LSP in LSP-IDENTIFIERS
    TLV.";
  reference
    "RFC 8231: Path Computation Element
    Communication Protocol (PCEP) Extensions
    for Stateful PCE";
}
leaf admin-state {
  type boolean;
  default "true";
  description
    "The desired operational state";
}
leaf operational-state {
  type operational-state;
  description
    "The operational status of the LSP";
}
container delegated {
  description
    "The delegation related parameters";
  leaf enabled {
    type boolean;
    default "false";
    description
      "LSP is delegated or not; set to true when
      delegated";
  }
  leaf peer {
    type leafref {
      path "/pcep/entity/peers/peer/addr";
    }
  }
}

```

```

}
must '(!../enabled = true())' {
  error-message "The LSP must be delegated";
}
description
  "At the PCC, the reference to the PCEP peer to
  which LSP is delegated; At the PCE, the

```

```

        reference to the PCEP peer which delegated this
        LSP";
    }
    leaf srp-id {
        type uint32 {
            range "1..4294967294";
        }
        description
            "The last SRP-ID-number associated with this
            LSP.";
    }
}
container initiation {
    if-feature "pce-initiated";
    description
        "The PCE initiation related parameters";
    reference
        "RFC 8281: Path Computation Element Communication
        Protocol (PCEP) Extensions for PCE-Initiated LSP
        Setup in a Stateful PCE Model";
    leaf enabled {
        type boolean;
        default "false";
        description
            "Set to true if this LSP is initiated by a PCE";
    }
    leaf peer {
        type leafref {
            path "/pcep/entity/peers/peer/addr";
        }
        must '(!../enabled = true())' {
            error-message "The LSP must be PCE-Initiated";
        }
        description
            "At the PCC, the reference to the PCEP peer
            that initiated this LSP; At the PCE, the
            reference to the PCEP peer where the LSP
            is initiated";
    }
}
leaf symbolic-path-name {

```

```

    type string;
    description
        "The symbolic path name associated with the LSP.";
    reference
        "RFC 8231: Path Computation Element Communication
        Protocol (PCEP) Extensions for Stateful PCE";
}
leaf last-error {
    type identityref {
        base lsp-error;
    }
    description
        "The last error for the LSP.";
}
leaf pst {
    type identityref {
        base te-types:path-signaling-type;
    }
    default "te-types:path-setup-rsvp";
    description
        "The Path Setup Type (PST)";
    reference
        "RFC 8408: Conveying Path Setup Type in PCE
        Communication Protocol (PCEP) Messages";
}
list association-list {
    if-feature "association";
    key "type id source global-source extended-id";
    description
        "List of all PCEP associations";
    leaf type {
        type leafref {
            path "/pcep/entity/lsp-db/"
                + "association-list/type";
        }
        description
            "PCEP Association Type";
    }
    leaf id {
        type leafref {
            path "/pcep/entity/lsp-db/"
                + "association-list/id";
        }
        description
            "PCEP Association ID";
    }
    leaf source {
        type leafref {

```

Internet-Draft

PCE-YANG

January 2022

```
        path "/pcep/entity/lsp-db/"
          + "association-list/source";
      }
      description
        "PCEP Association Source.";
    }
    leaf global-source {
      type leafref {
        path "/pcep/entity/lsp-db/"
          + "association-list/global-source";
      }
      description
        "PCEP Association Global Source.";
    }
    leaf extended-id {
      type leafref {
        path "/pcep/entity/lsp-db/"
          + "association-list/extended-id";
      }
      description
        "Additional information to
        support unique identification.";
    }
    reference
      "RFC 8697: Path Computation Element Communication
      Protocol (PCEP) Extensions for Establishing
      Relationships between Sets of Label Switched
      Paths (LSPs)";
  }
}
}
container path-keys {
  when "../role = 'pce' or ../role = 'pcc-and-pce'" {
    description
      "These fields are applicable when the role is
      PCE";
  }
  if-feature "path-key";
  config false;
  description
    "The path-keys generated by the PCE";
  reference
    "RFC 5520: Preserving Topology Confidentiality
```

```

        in Inter-Domain Path Computation Using a Path-
        Key-Based Mechanism";
list path-keys {
    key "path-key";
    description

```

```

    "The list of path-keys generated by the PCE";
leaf path-key {
    type uint16;
    description
        "The identifier, or token used to represent
        the Confidential Path Segment (CPS) within
        the context of the PCE";
}
container cps {
    description
        "The Confidential Path Segment (CPS)";
    list explicit-route-objects {
        key "index";
        description
            "List of explicit route objects";
        leaf index {
            type uint32;
            description
                "ERO subobject index";
        }
        uses te-types:explicit-route-hop;
    }
}
leaf pcc-original {
    type leafref {
        path "/pcep/entity/peers/peer/addr";
    }
    description
        "Reference to PCC peer address of
        the original request";
}
leaf req-id {
    type uint32;
    description
        "The request ID of the original PCReq.";
}
}

```

```

leaf retrieved {
    type boolean;
    description
        "If path-key has been retrieved yet";
}
leaf pcc-retrieved {
    type leafref {
        path "/pcep/entity/peers/peer/addr";
    }
    must '(!./retrieved = true())' {
        error-message "The Path-key should be retrieved";
    }
}

```

```

    description
        "Reference to PCC peer address which
        retrieved the path-key";
}
leaf creation-time {
    type yang:timestamp;
    description
        "The timestamp value at the time this Path-Key
        was created.";
}
leaf discard-time {
    type uint32;
    units "minutes";
    description
        "A time after which this path-keys will be
        discarded";
}
leaf reuse-time {
    type uint32;
    units "minutes";
    description
        "A time after which this path-keys could be
        reused";
}
}
}
container peers {
    description
        "The list of configured peers for the

```

```

    entity (remote PCE)";
list peer {
  key "addr";
  description
    "The peer configured for the entity.
    (remote PCE)";
  leaf addr {
    type inet:ip-address-no-zone;
    description
      "The local Internet address of this
      PCEP peer.";
  }
  leaf role {
    type pcep-role;
    must '(. != "pcc-and-pce")' {
      error-message
        "The PCEP peer cannot be both
        PCE and PCC at the same time";
    }
  }
}

```

```

mandatory true;
description
  "The role of the PCEP Peer.
  Takes one of the following values.
  - unknown(0): this PCEP peer role is not
  known.
  - pcc(1): this PCEP peer is a PCC.
  - pce(2): this PCEP peer is a PCE.
  - pcc-and-pce(3): is not allowed as PCEP
  peer cannot be acting as both a PCC and a
  PCE at the sametime.";
}
leaf description {
  type string;
  description
    "Description of the PCEP peer
    configured by the user";
}
uses info {
  description
    "PCE Peer information";
}

```

```

container pce-info {
  uses pce-info {
    description
      "PCE Peer information";
  }
  description
    "The PCE Peer information";
}
leaf delegation-pref {
  if-feature "stateful";
  type uint8 {
    range "0..7";
  }
  description
    "The PCE peer delegation preference.";
}
container auth {
  description
    "The Authentication options";
  choice auth-type-selection {
    description
      "Options for expressing authentication
      setting.";
    case auth-key-chain {
      leaf key-chain {
        type key-chain:key-chain-ref;

```

```

      description
        "key-chain name.";
    }
  }
  case auth-key {
    leaf crypto-algorithm {
      type identityref {
        base key-chain:crypto-algorithm;
      }
      mandatory true;
      description
        "Cryptographic algorithm associated
        with key.";
    }
    choice key-string-style {

```



```

description
  "Key string styles";
case keystack {
  leaf keystack {
    nacm:default-deny-all;
    type string;
    description
      "Key string in ASCII format.";
  }
}
case hexadecimal {
  if-feature "key-chain:hex-key-string";
  leaf hexadecimal-string {
    nacm:default-deny-all;
    type yang:hex-string;
    description
      "Key in hexadecimal string format. When
      compared to ASCII, specification in
      hexadecimal affords greater key entropy
      with the same number of internal
      key-string octets. Additionally, it
      discourages usage of well-known words or
      numbers.";
  }
}
}
}
case auth-tls {
  if-feature "tls";
  choice role {
    description
      "The role of the local entity";
    case server {

```

```

container tls-server {
  uses tlss:tls-server-grouping {
    description
      "Server TLS information.";
  }
  description
    "TLS related information";
}

```



```

        "The timestamp value of the last time a
        session with this peer was successfully
        established.";
    }
    leaf session-fail-time {
        type yang:timestamp;
        config false;
        description
            "The timestamp value of the last time a
            session with this peer failed to be
            established.";
    }
    leaf session-fail-up-time {
        type yang:timestamp;
        config false;
        description
            "The timestamp value of the last time a
            session with this peer failed from
            active.";
    }
    container sessions {
        config false;
        description
            "This entry represents a single PCEP
            session in which the local PCEP entity participates.
            This entry exists only if the corresponding PCEP
            session has been initialized by some event, such as
            manual user configuration, auto-discovery of a peer,
            or an incoming TCP connection.";
        list session {
            key "initiator";
            description
                "The list of sessions, note that for a time being
                two sessions may exist for a peer";
            leaf initiator {
                type pcep-initiator;
                description
                    "The initiator of the session, that is, whether
                    the TCP connection was initiated by the local
                    PCEP entity or the peer.
                    There is a window during session
                    initialization where two sessions can exist
                    between a pair of PCEP speakers, each
                    initiated by one of the speakers. One of
                    these sessions is always discarded before it
                    leaves OpenWait state. However, before it is
                    discarded, two sessions to the given peer

```

```
        appear transiently in this YANG module. The
        sessions are distinguished by who initiated
        them, and so this field is the key.";
    }
    leaf role {
        type leafref {
            path "/pcep/entity/role";
        }
        description
            "The reference to peer role .";
    }
    leaf state-last-change {
        type yang:timestamp;
        description
            "The timestamp value at the time this
            session entered its current state as
            denoted by the state leaf.";
    }
    leaf state {
        type pcep-sess-state;
        description
            "The current state of the session.
            The set of possible states excludes the
            idle state since entries do not exist
            in the idle state.";
    }
    leaf session-creation {
        type yang:timestamp;
        description
            "The timestamp value at the time this
            session was created.";
    }
    leaf connect-retry {
        type yang:counter32;
        description
            "The number of times that the local PCEP
            entity has attempted to establish a TCP
            connection for this session without
            success. The PCEP entity gives up when
            this reaches connect-max-retry.";
    }
    leaf local-id {
        type uint8;
        description
            "The value of the PCEP session ID used by
            the local PCEP entity in the Open message
```

for this session. If state is tcp-pending then this is the session ID that will be

```
        used in the Open message. Otherwise, this
        is the session ID that was sent in the
        Open message.";
    reference
        "RFC 5440: Path Computation Element (PCE)
        Communication Protocol (PCEP)";
}
leaf remote-id {
    type uint8;
    must "((../state != 'tcp-pending'"
        + "and "
        + "../state != 'open-wait' )"
        + "or "
        + "((../state = 'tcp-pending'"
        + " or "
        + "../state = 'open-wait' )"
        + "and (. = 0)))" {
        error-message "Invalid remote-id";
    description
        "If state is TCPPending or OpenWait then
        this leaf is not used and MUST be set to
        zero.";
}
description
    "The value of the PCEP session ID used by the
    peer in its Open message for this session.";
reference
    "RFC 5440: Path Computation Element (PCE)
    Communication Protocol (PCEP)";
}
leaf keepalive-timer {
    type uint8;
    units "seconds";
    must "((../state = 'session-up'"
        + "or "
        + "../state != 'session-up'"
        + "and (. = 0)))" {
        error-message "Invalid Keepalive timer";
    description
```

```

        "This field is used if and only if state is
        session-up. Otherwise, it is not used and
        MUST be set to zero.";
    }
    description
        "The agreed maximum interval at which the local
        PCEP entity transmits PCEP messages on this PCEP
        session. Zero means that the local PCEP entity
        never sends Keepalives on this session.";

```

```

    reference
        "RFC 5440: Path Computation Element (PCE)
        Communication Protocol (PCEP)";
    }
    leaf peer-keepalive-timer {
        type uint8;
        units "seconds";
        must "(../state = 'session-up'"
            + "or "
            + "(../state != 'session-up'"
            + "and "
            + "(. = 0)))" {
            error-message "Invalid Peer Keepalive timer";
            description
                "This field is used if and only if state is
                session-up. Otherwise, it is not used and MUST
                be set to zero.";
        }
        description
            "The agreed maximum interval at which the peer
            transmits PCEP messages on this PCEP session.
            Zero means that the peer never sends Keepalives
            on this session.";
        reference
            "RFC 5440: Path Computation Element (PCE)
            Communication Protocol (PCEP)";
    }
    leaf dead-timer {
        type uint8;
        units "seconds";
        description
            "The DeadTimer interval for this PCEP session.";
    }

```

```

reference
  "RFC 5440: Path Computation Element (PCE)
    Communication Protocol (PCEP)";
}
leaf peer-dead-timer {
  type uint8;
  units "seconds";
  must "((../state != 'tcp-pending'"
    + "and "
    + "../state != 'open-wait' )"
    + "or "
    + "((../state = 'tcp-pending'"
    + " or "
    + "../state = 'open-wait' )"
    + "and "
    + "(. = 0)))" {

```

```

error-message "Invalid Peer DeadTimer";
description
  "If state is TCPPending or OpenWait then this
    leaf is not used and MUST be set to zero.";
}
description
  "The peer's DeadTimer interval
    for this PCEP session.";
reference
  "RFC 5440: Path Computation Element (PCE)
    Communication Protocol (PCEP)";
}
leaf ka-hold-time-rem {
  type uint8;
  units "seconds";
  must "((../state != 'tcp-pending'"
    + "and "
    + "../state != 'open-wait' )"
    + "or "
    + "((../state = 'tcp-pending'"
    + "or "
    + "../state = 'open-wait' )"
    + "and "
    + "(. = 0)))" {
error-message

```

```

        "Invalid Keepalive hold time remaining";
    description
        "If state is TCPPending or OpenWait then this
        field is not used and MUST be set to zero.";
    }
    description
        "The Keepalive hold time remaining for this
        session.";
    }
    leaf overloaded {
        type boolean;
        description
            "If the local PCEP entity has informed the peer that
            it is currently overloaded, then this is set to true.
            Otherwise, it is set to false.";
        reference
            "RFC 5440: Path Computation Element (PCE)
            Communication Protocol (PCEP)";
    }
    leaf overloaded-timestamp {
        when '(!../overloaded = true())' {
            description
                "Valid when overloaded";
        }
    }

```

```

    }
    type yang:timestamp;
    description
        "The timestamp value of the time when the
        overloaded field was set to true.";
    }
    leaf overload-time {
        type uint32;
        units "seconds";
        must '(!../overloaded = true()) '
            + 'or ((../overloaded != true()) '
            + 'and (. = 0))' {
            error-message "Invalid overload-time";
            description
                "This field is only used if overloaded is set to
                true. Otherwise, it is not used and MUST be set
                to zero.";
        }
    }

```



```

    description
        "The interval of time that is remaining until the
        local PCEP entity will cease to be overloaded on
        this session.";
    reference
        "RFC 5440: Path Computation Element (PCE)
        Communication Protocol (PCEP)";
}
leaf peer-overloaded {
    type boolean;
    description
        "If the peer has informed the local PCEP entity
        that it is currently overloaded, then this is
        set to true. Otherwise, it is set to false.";
    reference
        "RFC 5440: Path Computation Element (PCE)
        Communication Protocol (PCEP)";
}
leaf peer-overloaded-timestamp {
    when '(!../peer-overloaded = true())' {
        description
            "Valid when Peer is overloaded";
    }
    type yang:timestamp;
    description
        "The timestamp value of the time when the
        peer-overloaded field was set to true.";
}
leaf peer-overload-time {
    type uint32;

```

```

units "seconds";
must '(!../peer-overloaded = '
    + 'true()) or '
    + '(!../peer-overloaded !='
    + 'true())'
    + ' and '
    + '(. = 0)))' {
    error-message "Invalid peer overload time";
    description
        "This field is only used if peer-overloaded
        is set to true. Otherwise, it is not used

```

```

        and MUST be set to zero.";
    }
    description
        "The interval of time that is remaining until
        the peer will cease to be overloaded. If it
        is not known how long the peer will stay in
        overloaded state, this leaf is set to zero.";
    reference
        "RFC 5440: Path Computation Element (PCE)
        Communication Protocol (PCEP)";
    }
    leaf lspdb-sync {
        if-feature "stateful";
        type sync-state;
        description
            "The LSP-DB state synchronization status.";
        reference
            "RFC 8231: Path Computation Element Communication
            Protocol (PCEP) Extensions for Stateful PCE";
    }
    leaf recv-db-ver {
        when "../role = 'pcc'"
        + "or "
        + "../role = 'pcc-and-pce'" {
            description
                "This field is applicable when the role is
                PCC";
        }
        if-feature "stateful";
        if-feature "sync-opt";
        type uint64;
        description
            "The last received LSP State Database Version
            Number";
        reference
            "RFC 8231: Path Computation Element Communication
            Protocol (PCEP) Extensions for Stateful PCE";
    }

```

```

    }
    container of-list {
        when "../role = 'pce'"
        + "or "

```

```

        + "../role = 'pcc-and-pce'" {
    description
        "These fields are applicable when the role is
        PCE";
    }
    if-feature "objective-function";
    uses of-list;
    description
        "Indicate the list of supported OF on this
        session";
    reference
        "RFC 5541: Encoding of Objective Functions in
        the Path Computation Element Communication
        Protocol (PCEP)";
    }
    container pst-list {
        when "../role = 'pce'"
            + "or "
            + "../role = 'pcc-and-pce'" {
            description
                "These fields are applicable when the role is
                PCE";
            }
        description
            "Indicate the list of supported
            PST on this session";
        reference
            "RFC 8408: Conveying Path Setup Type in PCE
            Communication Protocol (PCEP) Messages";
        list path-setup-type {
            key "pst";
            description
                "The list of PST";
            leaf pst {
                type identityref {
                    base te-types:path-signaling-type;
                }
                description
                    "The PST supported";
            }
        }
    }
    }
    container assoc-type-list {
        if-feature "association";
    }

```

```
    description
      "Indicate the list of supported association types
      on this session";
    reference
      "RFC 8697: Path Computation Element Communication
      Protocol (PCEP) Extensions for Establishing
      Relationships between Sets of Label Switched
      Paths (LSPs)";
    list assoc-type {
      key "at";
      description
        "The list of authorized association types";
      leaf at {
        type identityref {
          base te-types:association-type;
        }
        description
          "The association type authorized";
      }
    }
  }
  leaf speaker-entity-id {
    if-feature "sync-opt";
    type string;
    description
      "The Speaker Entity Identifier";
    reference
      "RFC 8232: Optimizations of Label Switched
      Path State Synchronization Procedures for
      a Stateful PCE";
  }
}
// session
}
// sessions
}
//peer
}
//peers
}
//entity
}

//pcep
/*
 * Notifications
 */
```

Internet-Draft

PCE-YANG

January 2022

```
notification pcep-session-up {
  description
    "This notification is sent when the value of
     '/pcep/peers/peer/sessions/session/state'
     enters the 'session-up' state.";
  uses notification-instance-hdr;
  uses notification-session-hdr;
  leaf state-last-change {
    type yang:timestamp;
    description
      "The timestamp value at the time this session
       entered its current state as denoted by the state
       leaf.";
  }
  leaf state {
    type pcep-sess-state;
    description
      "The current state of the session.
       The set of possible states excludes the idle state
       since entries do not exist in the idle state.";
  }
  reference
    "RFC 5440: Path Computation Element (PCE) Communication
     Protocol (PCEP)";
}

//notification

notification pcep-session-down {
  description
    "This notification is sent when the value of
     '/pcep/peers/peer/sessions/session/state'
     leaves the 'session-up' state.";
  uses notification-instance-hdr;
  leaf session-initiator {
    type pcep-initiator;
    description
      "The initiator of the session.";
  }
  leaf state-last-change {
```

```

    type yang:timestamp;
    description
        "The timestamp value at the time this session
        entered its current state as denoted by the state
        leaf.";
}
leaf state {
    type pcep-sess-state;

```

```

    description
        "The current state of the session.
        The set of possible states excludes the idle state
        since entries do not exist in the idle state.";
}
reference
    "RFC 5440: Path Computation Element (PCE) Communication
    Protocol (PCEP)";
}

//notification

notification pcep-session-local-overload {
    description
        "This notification is sent when the local PCEP entity
        enters overload state for a peer.";
    uses notification-instance-hdr;
    uses notification-session-hdr;
    leaf overloaded {
        type boolean;
        description
            "If the local PCEP entity has informed the peer
            that it is currently overloaded, then this is set
            to true. Otherwise, it is set to false.";
    }
    leaf overloaded-timestamp {
        type yang:timestamp;
        description
            "The timestamp value of the time when the
            overloaded field was set to true.";
    }
    leaf overload-time {
        type uint32;

```

```

    units "seconds";
    description
        "The interval of time that is remaining until the
        local PCEP entity will cease to be overloaded on
        this session.";
}
reference
    "RFC 5440: Path Computation Element (PCE) Communication
    Protocol (PCEP)";
}

```

```
//notification
```

```
notification pcep-session-local-overload-clear {
    description

```

```

    "This notification is sent when the local PCEP entity
    leaves overload state for a peer.";
uses notification-instance-hdr;
leaf overloaded {
    type boolean;
    description
        "If the local PCEP entity has informed the peer
        that it is currently overloaded, then this is set
        to true. Otherwise, it is set to false.";
}
leaf overloaded-clear-timestamp {
    type yang:timestamp;
    description
        "The timestamp value of the time when the
        overloaded field was set to false.";
}
reference
    "RFC 5440: Path Computation Element (PCE) Communication
    Protocol (PCEP)";
}

//notification

```

```
notification pcep-session-peer-overload {
    description
        "This notification is sent when a peer enters overload

```

```

        state.";
uses notification-instance-hdr;
uses notification-session-hdr;
leaf peer-overloaded {
    type boolean;
    description
        "If the peer has informed the local PCEP entity that
        it is currently overloaded, then this is set to
        true. Otherwise, it is set to false.";
}
leaf peer-overloaded-timestamp {
    type yang:timestamp;
    description
        "The timestamp value of the time when the
        peer-overloaded field was set to true.";
}
leaf peer-overload-time {
    type uint32;
    units "seconds";
    description
        "The interval of time that is remaining until the
        peer will cease to be overloaded. If it is not

```

```

        known how long the peer will stay in overloaded
        state, this leaf is set to zero.";
    }
    reference
        "RFC 5440: Path Computation Element (PCE) Communication
        Protocol (PCEP)";
}

//notification

notification pcep-session-peer-overload-clear {
    description
        "This notification is sent when a peer leaves overload
        state.";
    uses notification-instance-hdr;
    leaf peer-overloaded {
        type boolean;
        description
            "If the peer has informed the local PCEP entity that

```



```

        it is currently overloaded, then this is set to
        true. Otherwise, it is set to false.";
    }
    leaf peer-overloaded-clear-timestamp {
        type yang:timestamp;
        description
            "The timestamp value of the time when the
            peer-overloaded field was set to false.";
    }
    reference
        "RFC 5440: Path Computation Element (PCE) Communication
        Protocol (PCEP)";
}

//notification
/*
 * RPC
 */

rpc trigger-resync {
    if-feature "stateful";
    if-feature "sync-opt";
    description
        "Trigger the resynchronization at the PCE";
    reference
        "RFC 8232: Optimizations of Label Switched Path State
        Synchronization Procedures for a Stateful PCE";
    input {
        leaf pcc {

```

```

        type leafref {
            path "/pcep/entity/peers/peer/addr";
        }
        description
            "The IP address to identify the PCC. The state
            synchronization is re-triggered for all LSPs from
            the PCC. The rpc on the PCC will be ignored.";
    }
}
//input
}

```

```
//rpc
}  
<CODE ENDS>
```

[9.2.](#) ietf-pcep-stats module

```
<CODE BEGINS> file "ietf-pcep-stats@2022-01-25.yang"  
module ietf-pcep-stats {  
  yang-version 1.1;  
  namespace "urn:ietf:params:xml:ns:yang:ietf-pcep-stats";  
  prefix pcep-stats;  
  
  import ietf-pcep {  
    prefix pcep;  
    reference  
      "RFC XXXX: A YANG Data Model for Path Computation  
      Element Communications Protocol (PCEP)";  
  }  
  import ietf-yang-types {  
    prefix yang;  
    reference  
      "RFC 6991: Common YANG Data Types";  
  }  
  
  organization  
    "IETF PCE (Path Computation Element) Working Group";  
  contact  
    "WG Web: <https://datatracker.ietf.org/wg/pce/about/>  
    WG List: <mailto:pce@ietf.org>  
    Editor: Dhruv Dhody  
           <mailto:dhruv.ietf@gmail.com>";  
  description  
    "The YANG module augments the PCEP yang operational  
    model with statistics, counters and telemetry data.  
  
    Copyright (c) 2022 IETF Trust and the persons identified as
```

authors of the code. All rights reserved.

Redistribution and use in source and binary forms, with or without modification, is permitted pursuant to, and subject to the license terms contained in, the Revised BSD License

set forth in [Section 4.c](#) of the IETF Trust's Legal Provisions Relating to IETF Documents (<https://trustee.ietf.org/license-info>).

This version of this YANG module is part of RFC XXXX; see the RFC itself for full legal notices."

```
revision 2022-01-25 {
  description
    "Initial revision.";
  reference
    "RFC XXXX: A YANG Data Model for Path Computation
    Element Communications Protocol (PCEP)";
}

/*
 * Groupings
 */

grouping pcep-stats {
  description
    "This grouping defines statistics for PCEP. It is used
    for both peer and current session.";
  leaf discontinuity-time {
    type yang:timestamp;
    description
      "The timestamp value of the time when the
      statistics were last reset.";
  }
  leaf rsp-time-avg {
    when "../../pcep:role = 'pce'"
      + "or "
      + "../../pcep:role = 'pcc-and-pce'" {
      description
        "Valid for PCEP Peer as PCE";
    }
    type uint32;
    units "milliseconds";
    description
      "The average response time. If an average response time
      has not been calculated then this leaf has the value
      zero.";
  }
}
```

```

leaf rsp-time-lwm {
  when "../..//pcep:role = 'pce'"
    + "or "
    + "../..//pcep:role = 'pcc-and-pce'" {
    description
      "Valid for PCEP Peer as PCE";
  }
  type uint32;
  units "milliseconds";
  description
    "The smallest (low-water mark) response time seen.
    If no responses have been received then this leaf has
    the value zero.";
}
leaf rsp-time-hwm {
  when "../..//pcep:role = 'pce'"
    + "or "
    + "../..//pcep:role = 'pcc-and-pce'" {
    description
      "Valid for PCEP Peer as PCE";
  }
  type uint32;
  units "milliseconds";
  description
    "The greatest (high-water mark) response time seen.
    If no responses have been received then this object
    has the value zero.";
}
leaf num-pcreq-sent {
  when "../..//pcep:role = 'pce'"
    + "or "
    + "../..//pcep:role = 'pcc-and-pce'" {
    description
      "Valid for PCEP Peer as PCE";
  }
  type yang:counter32;
  description
    "The number of PCReq messages sent.";
}
leaf num-pcreq-rcvd {
  when "../..//pcep:role = 'pcc'"
    + "or "
    + "../..//pcep:role = 'pcc-and-pce'" {
    description
      "Valid for PCEP Peer as PCC";
  }
  type yang:counter32;
  description

```

Internet-Draft

PCE-YANG

January 2022

```
        "The number of PCReq messages received.";
    }
    leaf num-pcrep-sent {
        when "../../pcep:role = 'pcc'"
            + "or "
            + "../../pcep:role = 'pcc-and-pce'" {
            description
                "Valid for PCEP Peer as PCC";
        }
        type yang:counter32;
        description
            "The number of PCRep messages sent.";
    }
    leaf num-pcrep-rcvd {
        when "../../pcep:role = 'pce'"
            + "or "
            + "../../pcep:role = 'pcc-and-pce'" {
            description
                "Valid for PCEP Peer as PCE";
        }
        type yang:counter32;
        description
            "The number of PCRep messages received.";
    }
    leaf num-pcerr-sent {
        type yang:counter32;
        description
            "The number of PCErr messages sent.";
    }
    leaf num-pcerr-rcvd {
        type yang:counter32;
        description
            "The number of PCErr messages received.";
    }
    leaf num-pcntf-sent {
        type yang:counter32;
        description
            "The number of PCNtf messages sent.";
    }
    leaf num-pcntf-rcvd {
        type yang:counter32;
        description
```

```

        "The number of PCNtf messages received.";
    }
    leaf num-keepalive-sent {
        type yang:counter32;
        description
            "The number of Keepalive messages sent.";
    }

```

```

    }
    leaf num-keepalive-rcvd {
        type yang:counter32;
        description
            "The number of Keepalive messages received.";
    }
    leaf num-unknown-rcvd {
        type yang:counter32;
        description
            "The number of unknown messages received.";
    }
    leaf num-corrupt-rcvd {
        type yang:counter32;
        description
            "The number of corrupted PCEP message received.";
    }
    leaf num-req-sent {
        when "../../pcep:role = 'pce'"
        + "or "
        + "../../pcep:role = 'pcc-and-pce'" {
            description
                "Valid for PCEP Peer as PCE";
        }
        type yang:counter32;
        description
            "The number of requests sent. A request corresponds
            1:1 with an RP object in a PCReq message. This might
            be greater than num-pcreq-sent because multiple
            requests can be batched into a single PCReq
            message.";
    }
    leaf num-req-sent-pend-rep {
        when "../../pcep:role = 'pce'"
        + "or "
        + "../../pcep:role = 'pcc-and-pce'" {

```

```

        description
            "Valid for PCEP Peer as PCE";
    }
    type yang:counter32;
    description
        "The number of requests that have been sent for
        which a response is still pending.";
    }
    leaf num-req-sent-ero-rcvd {
        when "../../pcep:role = 'pce'"
            + "or "
            + "../../pcep:role = 'pcc-and-pce'" {
            description

```

```

        "Valid for PCEP Peer as PCE";
    }
    type yang:counter32;
    description
        "The number of requests that have been sent for
        which a response with an ERO object was received.
        Such responses indicate that a path was
        successfully computed by the peer.";
    }
    leaf num-req-sent-nopath-rcvd {
        when "../../pcep:role = 'pce'"
            + "or "
            + "../../pcep:role = 'pcc-and-pce'" {
            description
                "Valid for PCEP Peer as PCE";
        }
        type yang:counter32;
        description
            "The number of requests that have been sent for
            which a response with a NO-PATH object was
            received. Such responses indicate that the peer
            could not find a path to satisfy the
            request.";
        }
    leaf num-req-sent-cancel-rcvd {
        when "../../pcep:role = 'pce'"
            + "or "
            + "../../pcep:role = 'pcc-and-pce'" {

```

```

        description
            "Valid for PCEP Peer as PCE";
    }
    type yang:counter32;
    description
        "The number of requests that were cancelled with
        a PCNtf message. This might be different than
        num-pcntf-rcvd because not all PCNtf messages are
        used to cancel requests, and a single PCNtf message
        can cancel multiple requests.";
    }
    leaf num-req-sent-error-rcvd {
        when "../..pcep:role = 'pce'"
        + "or "
        + "../..pcep:role = 'pcc-and-pce'" {
            description
                "Valid for PCEP Peer as PCE";
        }
        type yang:counter32;
        description

```

```

        "The number of requests that were rejected with a
        PCErr message. This might be different than
        num-pcerr-rcvd because not all PCErr messages are
        used to reject requests, and a single PCErr message
        can reject multiple requests.";
    }
    leaf num-req-sent-timeout {
        when "../..pcep:role = 'pce'"
        + "or "
        + "../..pcep:role = 'pcc-and-pce'" {
            description
                "Valid for PCEP Peer as PCE";
        }
        type yang:counter32;
        description
            "The number of requests that have been sent to a peer
            and have been abandoned because the peer has taken too
            long to respond to them.";
    }
    leaf num-req-sent-cancel-sent {
        when "../..pcep:role = 'pce'"

```



```

        + "or "
        + "../..pcep:role = 'pcc-and-pce'" {
    description
        "Valid for PCEP Peer as PCE";
}
type yang:counter32;
description
    "The number of requests that were sent to the peer and
    explicitly cancelled by the local PCEP entity sending
    a PCNtf.";
}
leaf num-req-rcvd {
    when "../..pcep:role = 'pcc'"
        + "or "
        + "../..pcep:role = 'pcc-and-pce'" {
    description
        "Valid for PCEP Peer as PCC";
}
type yang:counter32;
description
    "The number of requests received. A request
    corresponds 1:1 with an RP object in a PCReq
    message.
    This might be greater than num-pcreq-rcvd because
    multiple requests can be batched into a single
    PCReq message.";
}

```

```

leaf num-req-rcvd-pend-rep {
    when "../..pcep:role = 'pcc'"
        + "or "
        + "../..pcep:role = 'pcc-and-pce'" {
    description
        "Valid for PCEP Peer as PCC";
}
type yang:counter32;
description
    "The number of requests that have been received for
    which a response is still pending.";
}
leaf num-req-rcvd-ero-sent {
    when "../..pcep:role = 'pcc'"

```

```

    + "or "
    + "../..pcep:role = 'pcc-and-pce'" {
description
    "Valid for PCEP Peer as PCC";
}
type yang:counter32;
description
    "The number of requests that have been received for
    which a response with an ERO object was sent. Such
    responses indicate that a path was successfully
    computed by the local PCEP entity.";
}
leaf num-req-rcvd-nopath-sent {
    when "../..pcep:role = 'pcc'"
    + "or "
    + "../..pcep:role = 'pcc-and-pce'" {
description
    "Valid for PCEP Peer as PCC";
}
type yang:counter32;
description
    "The number of requests that have been received for
    which a response with a NO-PATH object was sent. Such
    responses indicate that the local PCEP entity could
    not find a path to satisfy the request.";
}
leaf num-req-rcvd-cancel-sent {
    when "../..pcep:role = 'pcc'"
    + "or "
    + "../..pcep:role = 'pcc-and-pce'" {
description
    "Valid for PCEP Peer as PCC";
}
type yang:counter32;

```

```

description
    "The number of requests received that were cancelled
    by the local PCEP entity sending a PCNtf message.
    This might be different than num-pcntf-sent because
    not all PCNtf messages are used to cancel requests,
    and a single PCNtf message can cancel multiple
    requests.";

```

```

}
leaf num-req-rcvd-error-sent {
  when "../..//pcep:role = 'pcc'"
    + "or "
    + "../..//pcep:role = 'pcc-and-pce'" {
    description
      "Valid for PCEP Peer as PCC";
  }
  type yang:counter32;
  description
    "The number of requests received that were cancelled
    by the local PCEP entity sending a PCErr message.
    This might be different than num-pcerr-sent because
    not all PCErr messages are used to cancel requests,
    and a single PCErr message can cancel multiple
    requests.";
}
leaf num-req-rcvd-cancel-rcvd {
  when "../..//pcep:role = 'pcc'"
    + "or "
    + "../..//pcep:role = 'pcc-and-pce'" {
    description
      "Valid for PCEP Peer as PCC";
  }
  type yang:counter32;
  description
    "The number of requests that were received from the
    peer and explicitly cancelled by the peer sending
    a PCNtf.";
}
leaf num-rep-rcvd-unknown {
  when "../..//pcep:role = 'pce'"
    + "or "
    + "../..//pcep:role = 'pcc-and-pce'" {
    description
      "Valid for PCEP Peer as PCE";
  }
  type yang:counter32;
  description
    "The number of responses to unknown requests
    received. A response to an unknown request is a

```

```

        response whose RP object does not contain the
        request ID of any request that is currently
        outstanding on the session.";
    }
    leaf num-req-rcvd-unknown {
        when "../..//pcep:role = 'pcc'"
            + "or "
            + "../..//pcep:role = 'pcc-and-pce'" {
            description
                "Valid for PCEP Peer as PCC";
        }
        type yang:counter32;
        description
            "The number of unknown requests that have been
            received. An unknown request is a request
            whose RP object contains a request ID of zero.";
    }
    container svec {
        if-feature "pcep:svec";
        description
            "If synchronized path computation is supported";
        leaf num-svec-sent {
            when "../..//..//pcep:role = 'pce'"
                + "or "
                + "../..//..//pcep:role = 'pcc-and-pce'" {
            description
                "Valid for PCEP Peer as PCE";
            }
            type yang:counter32;
            description
                "The number of SVEC objects sent in PCReq messages.
                An SVEC object represents a set of synchronized
                requests.";
        }
        leaf num-svec-req-sent {
            when "../..//..//pcep:role = 'pce'"
                + "or "
                + "../..//..//pcep:role = 'pcc-and-pce'" {
            description
                "Valid for PCEP Peer as PCE";
            }
            type yang:counter32;
            description
                "The number of requests sent that appeared in one
                or more SVEC objects.";
        }
        leaf num-svec-rcvd {
            when "../..//..//pcep:role = 'pcc'"

```

Internet-Draft

PCE-YANG

January 2022

```
        + "or "
        + "../..../pcep:role = 'pcc-and-pce'" {
    description
        "Valid for PCEP Peer as PCC";
    }
    type yang:counter32;
    description
        "The number of SVEC objects received in PCReq
        messages. An SVEC object represents a set of
        synchronized requests.";
    }
    leaf num-svec-req-rcvd {
        when "../..../pcep:role = 'pcc'"
        + "or "
        + "../..../pcep:role = 'pcc-and-pce'" {
            description
                "Valid for PCEP Peer as PCC";
        }
        type yang:counter32;
        description
            "The number of requests received that appeared
            in one or more SVEC objects.";
    }
}
//svec
container stateful {
    if-feature "pcep:stateful";
    description
        "Stateful PCE related statistics";
    leaf num-pcrpt-sent {
        when "../..../pcep:role = 'pce'"
        + "or "
        + "../..../pcep:role = 'pcc-and-pce'" {
            description
                "Valid for PCEP Peer as PCE";
        }
        type yang:counter32;
        description
            "The number of PCRpt messages sent.";
    }
    leaf num-pcrpt-rcvd {
        when "../..../pcep:role = 'pcc'"
        + "or "
```

```

        + "../../../pcep:role = 'pcc-and-pce'" {
    description
        "Valid for PCEP Peer as PCC";
    }
    type yang:counter32;

```

```

    description
        "The number of PCRpt messages received.";
    }
    leaf num-pcupd-sent {
        when "../../../pcep:role = 'pcc'"
            + "or "
            + "../../../pcep:role = 'pcc-and-pce'" {
            description
                "Valid for PCEP Peer as PCC";
        }
        type yang:counter32;
        description
            "The number of PCUpd messages sent.";
    }
    leaf num-pcupd-rcvd {
        when "../../../pcep:role = 'pce'"
            + "or "
            + "../../../pcep:role = 'pcc-and-pce'" {
            description
                "Valid for PCEP Peer as PCE";
        }
        type yang:counter32;
        description
            "The number of PCUpd messages received.";
    }
    leaf num-rpt-sent {
        when "../../../pcep:role = 'pce'"
            + "or "
            + "../../../pcep:role = 'pcc-and-pce'" {
            description
                "Valid for PCEP Peer as PCE";
        }
        type yang:counter32;
        description
            "The number of LSP Reports sent.  A LSP report
            corresponds 1:1 with an LSP object in a PCRpt

```

```

        message. This might be greater than
        num-pcrpt-sent because multiple reports can
        be batched into a single PCRpt message.";
    }
    leaf num-rpt-rcvd {
        when "../../pcep:role = 'pcc'"
            + "or "
            + "../../pcep:role = 'pcc-and-pce'" {
            description
                "Valid for PCEP Peer as PCC";
        }
        type yang:counter32;
    }

```

```

        description
            "The number of LSP Reports received. A LSP report
            corresponds 1:1 with an LSP object in a PCRpt
            message.
            This might be greater than num-pcrpt-rcvd because
            multiple reports can be batched into a single
            PCRpt message.";
    }
    leaf num-rpt-rcvd-error-sent {
        when "../../pcep:role = 'pcc'"
            + "or "
            + "../../pcep:role = 'pcc-and-pce'" {
            description
                "Valid for PCEP Peer as PCC";
        }
        type yang:counter32;
    }
    leaf num-upd-sent {
        when "../../pcep:role = 'pcc'"
            + "or "
            + "../../pcep:role = 'pcc-and-pce'" {
            description
                "Valid for PCEP Peer as PCC";
        }
        type yang:counter32;
    }

```

```

description
  "The number of LSP updates sent. A LSP update
  corresponds 1:1 with an LSP object in a PCUpd
  message. This might be greater than
  num-pcupd-sent because multiple updates can
  be batched into a single PCUpd message.";
}
leaf num-upd-rcvd {
  when "../../pcep:role = 'pce'"
  + "or "
  + "../../pcep:role = 'pcc-and-pce'" {
    description
      "Valid for PCEP Peer as PCE";
  }
  type yang:counter32;
  description
    "The number of LSP Updates received. A LSP update
    corresponds 1:1 with an LSP object in a PCUpd
    message."

```

```

    This might be greater than num-pcupd-rcvd because
    multiple updates can be batched into a single
    PCUpd message.";
}
leaf num-upd-rcvd-unknown {
  when "../../pcep:role = 'pce'"
  + "or "
  + "../../pcep:role = 'pcc-and-pce'" {
    description
      "Valid for PCEP Peer as PCE";
  }
  type yang:counter32;
  description
    "The number of updates to unknown LSPs
    received. An update to an unknown LSP is a
    update whose LSP object does not contain the
    PLSP-ID of any LSP that is currently
    present.";
}
leaf num-upd-rcvd-undelegated {
  when "../../pcep:role = 'pce'"
  + "or "

```



```

        + "../../../pcep:role = 'pcc-and-pce'" {
    description
        "Valid for PCEP Peer as PCE";
}
type yang:counter32;
description
    "The number of updates to not delegated LSPs
    received. An update to an undelegated LSP is a
    update whose LSP object does not contain the
    PLSP-ID of any LSP that is currently
    delegated to current PCEP session.";
}
leaf num-upd-rcvd-error-sent {
    when "../../../pcep:role = 'pce'"
        + "or "
        + "../../../pcep:role = 'pcc-and-pce'" {
    description
        "Valid for PCEP Peer as PCE";
    }
    type yang:counter32;
    description
        "The number of updates to LSPs received that were
        responded by the local PCEP entity by sending a
        PCErr message.";
}
container initiation {

```

```

if-feature "pcep:pce-initiated";
description
    "PCE-Initiated related statistics";
leaf num-pcinitiate-sent {
    when "../../../pcep:role = 'pcc'"
        + "or "
        + "../../../pcep:role = 'pcc-and-pce'" {
    description
        "Valid for PCEP Peer as PCC";
    }
    type yang:counter32;
    description
        "The number of PCInitiate messages sent.";
}
leaf num-pcinitiate-rcvd {

```

```

when "../../../pcep:role = 'pce'"
  + "or "
  + "../../../pcep:role = 'pcc-and-pce'" {
  description
    "Valid for PCEP Peer as PCE";
}
type yang:counter32;
description
  "The number of PCInitiate messages received.";
}
leaf num-initiate-sent {
  when "../../../pcep:role = 'pcc'"
    + "or "
    + "../../../pcep:role = 'pcc-and-pce'" {
  description
    "Valid for PCEP Peer as PCC";
}
type yang:counter32;
description
  "The number of LSP Initiation sent via PCE.
  A LSP initiation corresponds 1:1 with an LSP
  object in a PCInitiate message. This might be
  greater than num-pcinitiate-sent because
  multiple initiations can be batched into a
  single PCInitiate message.";
}
leaf num-initiate-rcvd {
  when "../../../pcep:role = 'pce'"
    + "or "
    + "../../../pcep:role = 'pcc-and-pce'" {
  description
    "Valid for PCEP Peer as PCE";
}
}

```

```

type yang:counter32;
description
  "The number of LSP Initiation received from
  PCE. A LSP initiation corresponds 1:1 with
  an LSP object in a PCInitiate message. This
  might be greater than num-pcinitiate-rcvd
  because multiple initiations can be batched
  into a single PCInitiate message.";

```

```

    }
    leaf num-initiate-rcvd-error-sent {
        when "../.../.../pcep:role = 'pce'"
            + "or "
            + "../.../.../pcep:role = 'pcc-and-pce'" {
            description
                "Valid for PCEP Peer as PCE";
        }
        type yang:counter32;
        description
            "The number of initiations of LSPs received
            that were responded by the local PCEP entity
            by sending a PCErr message.";
    }
}
//initiation
}
//stateful
container path-key {
    when "../.../pcep:role = 'pcc'"
        + "or "
        + "../.../pcep:role = 'pcc-and-pce'" {
        description
            "Valid for PCEP Peer as PCC";
    }
    if-feature "pcep:path-key";
    description
        "If Path-Key is supported";
    leaf num-unknown-path-key {
        type yang:counter32;
        description
            "The number of attempts to expand an unknown
            path-key.";
    }
    leaf num-exp-path-key {
        type yang:counter32;
        description
            "The number of attempts to expand an expired
            path-key.";
    }
}

```

```

leaf num-dup-path-key {

```

```

        type yang:counter32;
        description
            "The number of duplicate attempts to expand same
            path-key.";
    }
    leaf num-path-key-no-attempt {
        type yang:counter32;
        description
            "The number of expired path-keys with no attempt to
            expand it.";
    }
}
//path-key
}

//pcep-stats
/*
 * Augment modules to add statistics
 */

augment "/pcep:pcep/pcep:entity/pcep:peers/pcep:peer" {
    description
        "Augmenting the statistics";
    leaf num-sess-setup-ok {
        type yang:counter32;
        config false;
        description
            "The number of PCEP sessions successfully established with
            the peer, including any current session. This counter is
            incremented each time a session with this peer is
            successfully established.";
    }
    leaf num-sess-setup-fail {
        type yang:counter32;
        config false;
        description
            "The number of PCEP sessions with the peer
            that have been attempted but failed
            before being fully established. This
            counter is incremented each time a
            session retry to this peer fails.";
    }
}
container pcep-stats {
    config false;
    description
        "The container for all statistics at peer level.";
    uses pcep-stats {

```

```
        description
            "Since PCEP sessions can be ephemeral, the peer statistics
            tracks a peer even when no PCEP session currently exists
            to that peer. The statistics contained are an aggregate of
            the statistics for all successive sessions to that peer.";
    }
    leaf num-req-sent-closed {
        when "../pcep:role = 'pce'"
            + "or "
            + "../pcep:role = 'pcc-and-pce'" {
            description
                "Valid for PCEP Peer as PCE";
        }
        type yang:counter32;
        description
            "The number of requests that were sent to the peer and
            implicitly cancelled when the session they were sent
            over was closed.";
    }
    leaf num-req-rcvd-closed {
        when "../pcep:role = 'pcc'"
            + "or "
            + "../pcep:role = 'pcc-and-pce'" {
            description
                "Valid for PCEP Peer as PCC";
        }
        type yang:counter32;
        description
            "The number of requests that were received from the peer
            and implicitly cancelled when the session they were
            received over was closed.";
    }
}
//pcep-stats
}

//augment

augment "/pcep:pcep/pcep:entity/pcep:peers/pcep:peer/"
    + "pcep:sessions/pcep:session" {
    description
        "Augmenting the statistics";
    container pcep-stats {
        description
            "The container for all statistics at session level.";
        uses pcep-stats {
```

description

"The statistics contained are for the current sessions to

```
        that peer. These are lost when the session goes down.";
    }
}
}

//augment

rpc statistics-reset {
  description
    "Reset statistics collected.";
  input {
    choice peer-or-all {
      description
        "Resets statistics for a particular peer or
        all";
      case peer {
        leaf peer-addr {
          type leafref {
            path "/pcep:pcep/pcep:entity/pcep:peers"
              + "/pcep:peer/pcep:addr";
          }
          description
            "Reference to peer address";
        }
        description
          "This resets all the statistics collected for
          the peer.";
      }
      case all {
        description
          "This resets all the statistics collected.";
      }
    }
  }
}
}
<CODE ENDS>
```

The YANG modules defined in this document is designed to be accessed via network management protocol such as NETCONF [[RFC6241](#)] or RESTCONF [[RFC8040](#)]. The lowest NETCONF layer is the secure transport layer and the mandatory-to-implement secure transport is SSH [[RFC6242](#)]. The lowest RESTCONF layer is HTTPS, and the mandatory-to-implement secure transport is TLS [[RFC8446](#)]

The NETCONF access control model [[RFC8341](#)] provides the means to restrict access for particular NETCONF or RESTCONF users to a pre-configured subset of all available NETCONF or RESTCONF protocol operations and content.

There are a number of data nodes defined in the ietf-pcep YANG module which are writable/creatable/deletable (i.e., config true, which is the default). These data nodes may be considered sensitive or vulnerable in some network environments. Write operations (e.g., <edit-config>) to these data nodes without proper protection can have a negative effect on network operations. These are the subtrees and data nodes and their sensitivity/vulnerability:

/pcep/entity/ - configure local parameters, capabilities etc.

/pcep/entity/peers - configure remote peers to setup PCEP session.

Unauthorized access to above list can adversely affect the PCEP session between the local entity and the peers. This may lead to inability to compute new paths, stateful operations on the delegated as well as PCE-initiated LSPs.

Some of the readable data nodes in the ietf-pcep YANG module may be considered sensitive or vulnerable in some network environments. It is thus important to control read access (e.g., via get, get-config, or notification) to these data nodes. These are the subtrees and data nodes and their sensitivity/vulnerability:

/pcep/lsp-db - All the LSPs in the network. Unauthorized access to this could provide the all path and network usage information.

/pcep/path-keys/ - The Confidential Path Segments (CPS) are hidden

using path-keys. Unauthorized access to this could leak confidential path information.

Some of the RPC operations in the ietf-pcep YANG module may be considered sensitive or vulnerable in some network environments. It is thus important to control access to these operations. These are the operations and their sensitivity/vulnerability:

trigger-resync - trigger resynchronization with the PCE.
Unauthorized access to this could force a PCEP session into continuous state synchronization.

The actual authentication key data (whether locally specified or part of a key-chain) is sensitive and needs to be kept secret from unauthorized parties; compromise of the key data would allow an attacker to forge PCEP traffic that would be accepted as authentic, potentially compromising the TE domain.

The model describes several notifications, implementations must rate-limit the generation of these notifications to avoid creating significant notification load. Otherwise, this notification load may have some side effects on the system stability and may be exploited as an attack vector.

Further, this document also include another YANG module (called ietf-pcep-stats) for maintaining the statistics by augmenting the ietf-pcep YANG module. There are no data nodes defined in this module which are writable/creatable/deletable (i.e., config true). The readable data nodes in this YANG module may be considered sensitive or vulnerable in some network environments. The statistics could provide information related to the current usage patterns of the network. It is thus important to control read access (e.g., via get, get-config, or notification).

Some of the RPC operations in this YANG module may be considered sensitive or vulnerable in some network environments. It is thus important to control access to these operations. These are the

operations and their sensitivity/vulnerability:

statistics-reset - The RPC is used to reset statistics.
Unauthorized reset could impact monitoring.

11. IANA Considerations

This document request the IANA to register two URIs in the "IETF XML Registry" [[RFC3688](#)]. Following the format in [RFC 3688](#), the following registrations are requested -

URI:	urn:ietf:params:xml:ns:yang:ietf-pcep
Registrant Contact:	The IESG
XML:	N/A; the requested URI is an XML namespace.
URI:	urn:ietf:params:xml:ns:yang:ietf-pcep-stats
Registrant Contact:	The IESG
XML:	N/A; the requested URI is an XML namespace.

This document request the IANA to register two YANG modules in the "YANG Module Names" registry [[RFC6020](#)], as follows -

Name:	ietf-pcep
Namespace:	urn:ietf:params:xml:ns:yang:ietf-pcep
Prefix:	pcep
Reference:	[This.I-D]
Name:	ietf-pcep-stats
Namespace:	urn:ietf:params:xml:ns:yang:ietf-pcep-stats
Prefix:	pcep-stats
Reference:	[This.I-D]

12. Implementation Status

[Note to the RFC Editor - remove this section before publication, as well as remove the reference to [RFC 7942](#).]

This section records the status of known implementations of the protocol defined by this specification at the time of posting of this

Internet-Draft, and is based on a proposal described in [[RFC7942](#)]. The description of implementations in this section is intended to assist the IETF in its decision processes in progressing drafts to RFCs. Please note that the listing of any individual implementation here does not imply endorsement by the IETF. Furthermore, no effort has been spent to verify the information presented here that was supplied by IETF contributors. This is not intended as, and must not be construed to be, a catalog of available implementations or their features. Readers are advised to note that other implementations may exist.

According to [[RFC7942](#)], "this will allow reviewers and working groups to assign due consideration to documents that have the benefit of running code, which may serve as evidence of valuable experimentation and feedback that have made the implemented protocols more mature. It is up to the individual working groups to use this information as they see fit".

Currently, there are no known implementations of the YANG Module as specified.

[13.](#) Acknowledgements

The initial document is based on the PCEP MIB [[RFC7420](#)]. We would like to thank the authors of aforementioned documents.

Thanks to Mahesh Jethmalani for the Yang Doctor review.

Thanks to Martin Bjorklund and Tom Petch for providing guidance regarding the Yang guidelines.

[14.](#) References

[14.1.](#) Normative References

[I-D.ietf-isis-yang-isis-cfg]

Litkowski, S., Yeung, D., Lindem, A., Zhang, J., and L. Lhotka, "YANG Data Model for IS-IS Protocol", Work in Progress, Internet-Draft, [draft-ietf-isis-yang-isis-cfg-42](#), 15 October 2019, <<https://www.ietf.org/archive/id/draft-ietf-isis-yang-isis-cfg-42.txt>>.

[I-D.ietf-netconf-tls-client-server]

Watsen, K., "YANG Groupings for TLS Clients and TLS Servers", Work in Progress, Internet-Draft, [draft-ietf-netconf-tls-client-server-26](https://www.ietf.org/archive/id/draft-ietf-netconf-tls-client-server-26), 14 December 2021, <<https://www.ietf.org/archive/id/draft-ietf-netconf-tls-client-server-26.txt>>.

[I-D.ietf-ospf-yang]

Yeung, D., Qu, Y., Zhang, J., Chen, I., and A. Lindem, "YANG Data Model for OSPF Protocol", Work in Progress, Internet-Draft, [draft-ietf-ospf-yang-29](https://www.ietf.org/archive/id/draft-ietf-ospf-yang-29), 17 October 2019, <<https://www.ietf.org/archive/id/draft-ietf-ospf-yang-29.txt>>.

[I-D.ietf-teas-yang-te]

Saad, T., Gandhi, R., Liu, X., Beeram, V. P., Bryskin, I., and O. G. D. Dios, "A YANG Data Model for Traffic Engineering Tunnels, Label Switched Paths and Interfaces", Work in Progress, Internet-Draft, [draft-ietf-teas-yang-te-28](https://www.ietf.org/archive/id/draft-ietf-teas-yang-te-28), 25 October 2021, <<https://www.ietf.org/archive/id/draft-ietf-teas-yang-te-28.txt>>.

[RFC2119] Bradner, S., "Key words for use in RFCs to Indicate Requirement Levels", [BCP 14](https://www.rfc-editor.org/info/rfc2119), [RFC 2119](https://www.rfc-editor.org/info/rfc2119), DOI 10.17487/RFC2119, March 1997, <<https://www.rfc-editor.org/info/rfc2119>>.

[RFC3688] Mealling, M., "The IETF XML Registry", [BCP 81](https://www.rfc-editor.org/info/rfc3688), [RFC 3688](https://www.rfc-editor.org/info/rfc3688), DOI 10.17487/RFC3688, January 2004, <<https://www.rfc-editor.org/info/rfc3688>>.

[RFC5088] Le Roux, J.L., Ed., Vasseur, J.P., Ed., Ikejiri, Y., and R. Zhang, "OSPF Protocol Extensions for Path Computation Element (PCE) Discovery", [RFC 5088](https://www.rfc-editor.org/info/rfc5088), DOI 10.17487/RFC5088, January 2008, <<https://www.rfc-editor.org/info/rfc5088>>.

[RFC5089] Le Roux, J.L., Ed., Vasseur, J.P., Ed., Ikejiri, Y., and R. Zhang, "IS-IS Protocol Extensions for Path Computation Element (PCE) Discovery", [RFC 5089](https://www.rfc-editor.org/info/rfc5089), DOI 10.17487/RFC5089, January 2008, <<https://www.rfc-editor.org/info/rfc5089>>.

- [RFC5440] Vasseur, JP., Ed. and JL. Le Roux, Ed., "Path Computation Element (PCE) Communication Protocol (PCEP)", [RFC 5440](#), DOI 10.17487/RFC5440, March 2009, <<https://www.rfc-editor.org/info/rfc5440>>.
- [RFC5520] Bradford, R., Ed., Vasseur, JP., and A. Farrel, "Preserving Topology Confidentiality in Inter-Domain Path Computation Using a Path-Key-Based Mechanism", [RFC 5520](#), DOI 10.17487/RFC5520, April 2009, <<https://www.rfc-editor.org/info/rfc5520>>.
- [RFC5541] Le Roux, JL., Vasseur, JP., and Y. Lee, "Encoding of Objective Functions in the Path Computation Element Communication Protocol (PCEP)", [RFC 5541](#), DOI 10.17487/RFC5541, June 2009, <<https://www.rfc-editor.org/info/rfc5541>>.
- [RFC5557] Lee, Y., Le Roux, JL., King, D., and E. Oki, "Path Computation Element Communication Protocol (PCEP) Requirements and Protocol Extensions in Support of Global Concurrent Optimization", [RFC 5557](#), DOI 10.17487/RFC5557, July 2009, <<https://www.rfc-editor.org/info/rfc5557>>.
- [RFC6020] Bjorklund, M., Ed., "YANG - A Data Modeling Language for the Network Configuration Protocol (NETCONF)", [RFC 6020](#), DOI 10.17487/RFC6020, October 2010, <<https://www.rfc-editor.org/info/rfc6020>>.
- [RFC6241] Enns, R., Ed., Bjorklund, M., Ed., Schoenwaelder, J., Ed., and A. Bierman, Ed., "Network Configuration Protocol (NETCONF)", [RFC 6241](#), DOI 10.17487/RFC6241, June 2011, <<https://www.rfc-editor.org/info/rfc6241>>.
- [RFC6242] Wasserman, M., "Using the NETCONF Protocol over Secure Shell (SSH)", [RFC 6242](#), DOI 10.17487/RFC6242, June 2011, <<https://www.rfc-editor.org/info/rfc6242>>.
- [RFC6991] Schoenwaelder, J., Ed., "Common YANG Data Types", [RFC 6991](#), DOI 10.17487/RFC6991, July 2013, <<https://www.rfc-editor.org/info/rfc6991>>.

- [RFC7950] Bjorklund, M., Ed., "The YANG 1.1 Data Modeling Language", [RFC 7950](#), DOI 10.17487/RFC7950, August 2016, <<https://www.rfc-editor.org/info/rfc7950>>.
- [RFC8040] Bierman, A., Bjorklund, M., and K. Watsen, "RESTCONF Protocol", [RFC 8040](#), DOI 10.17487/RFC8040, January 2017, <<https://www.rfc-editor.org/info/rfc8040>>.
- [RFC8174] Leiba, B., "Ambiguity of Uppercase vs Lowercase in [RFC 2119](#) Key Words", [BCP 14](#), [RFC 8174](#), DOI 10.17487/RFC8174, May 2017, <<https://www.rfc-editor.org/info/rfc8174>>.
- [RFC8177] Lindem, A., Ed., Qu, Y., Yeung, D., Chen, I., and J. Zhang, "YANG Data Model for Key Chains", [RFC 8177](#), DOI 10.17487/RFC8177, June 2017, <<https://www.rfc-editor.org/info/rfc8177>>.
- [RFC8231] Crabbe, E., Minei, I., Medved, J., and R. Varga, "Path Computation Element Communication Protocol (PCEP) Extensions for Stateful PCE", [RFC 8231](#), DOI 10.17487/RFC8231, September 2017, <<https://www.rfc-editor.org/info/rfc8231>>.
- [RFC8232] Crabbe, E., Minei, I., Medved, J., Varga, R., Zhang, X., and D. Dhody, "Optimizations of Label Switched Path State Synchronization Procedures for a Stateful PCE", [RFC 8232](#), DOI 10.17487/RFC8232, September 2017, <<https://www.rfc-editor.org/info/rfc8232>>.
- [RFC8253] Lopez, D., Gonzalez de Dios, O., Wu, Q., and D. Dhody, "PCEPS: Usage of TLS to Provide a Secure Transport for the Path Computation Element Communication Protocol (PCEP)", [RFC 8253](#), DOI 10.17487/RFC8253, October 2017, <<https://www.rfc-editor.org/info/rfc8253>>.
- [RFC8281] Crabbe, E., Minei, I., Sivabalan, S., and R. Varga, "Path Computation Element Communication Protocol (PCEP) Extensions for PCE-Initiated LSP Setup in a Stateful PCE Model", [RFC 8281](#), DOI 10.17487/RFC8281, December 2017, <<https://www.rfc-editor.org/info/rfc8281>>.
- [RFC8306] Zhao, Q., Dhody, D., Ed., Palleti, R., and D. King, "Extensions to the Path Computation Element Communication Protocol (PCEP) for Point-to-Multipoint Traffic Engineering Label Switched Paths", [RFC 8306](#), DOI 10.17487/RFC8306, November 2017, <<https://www.rfc-editor.org/info/rfc8306>>.

Internet-Draft

PCE-YANG

January 2022

-
- [RFC8340] Bjorklund, M. and L. Berger, Ed., "YANG Tree Diagrams", [BCP 215](#), [RFC 8340](#), DOI 10.17487/RFC8340, March 2018, <<https://www.rfc-editor.org/info/rfc8340>>.
- [RFC8341] Bierman, A. and M. Bjorklund, "Network Configuration Access Control Model", STD 91, [RFC 8341](#), DOI 10.17487/RFC8341, March 2018, <<https://www.rfc-editor.org/info/rfc8341>>.
- [RFC8408] Sivabalan, S., Tantsura, J., Minei, I., Varga, R., and J. Hardwick, "Conveying Path Setup Type in PCE Communication Protocol (PCEP) Messages", [RFC 8408](#), DOI 10.17487/RFC8408, July 2018, <<https://www.rfc-editor.org/info/rfc8408>>.
- [RFC8446] Rescorla, E., "The Transport Layer Security (TLS) Protocol Version 1.3", [RFC 8446](#), DOI 10.17487/RFC8446, August 2018, <<https://www.rfc-editor.org/info/rfc8446>>.
- [RFC8664] Sivabalan, S., Filsfils, C., Tantsura, J., Henderickx, W., and J. Hardwick, "Path Computation Element Communication Protocol (PCEP) Extensions for Segment Routing", [RFC 8664](#), DOI 10.17487/RFC8664, December 2019, <<https://www.rfc-editor.org/info/rfc8664>>.
- [RFC8697] Minei, I., Crabbe, E., Sivabalan, S., Ananthakrishnan, H., Dhody, D., and Y. Tanaka, "Path Computation Element Communication Protocol (PCEP) Extensions for Establishing Relationships between Sets of Label Switched Paths (LSPs)", [RFC 8697](#), DOI 10.17487/RFC8697, January 2020, <<https://www.rfc-editor.org/info/rfc8697>>.
- [RFC8776] Saad, T., Gandhi, R., Liu, X., Beeram, V., and I. Bryskin, "Common YANG Data Types for Traffic Engineering", [RFC 8776](#), DOI 10.17487/RFC8776, June 2020, <<https://www.rfc-editor.org/info/rfc8776>>.
- [RFC8779] Margaria, C., Ed., Gonzalez de Dios, O., Ed., and F. Zhang, Ed., "Path Computation Element Communication Protocol (PCEP) Extensions for GMPLS", [RFC 8779](#), DOI 10.17487/RFC8779, July 2020,

<<https://www.rfc-editor.org/info/rfc8779>>.

14.2. Informative References

Dhody, et al.

Expires 29 July 2022

[Page 104]

Internet-Draft

PCE-YANG

January 2022

[IANA-OSPF]

"Path Computation Element (PCE) Capability Flags in Open Shortest Path First v2 (OSPFv2) Parameters",
<<https://www.iana.org/assignments/ospfv2-parameters/ospfv2-parameters.xhtml#ospfv2-parameters-14>>.

[IANA-PCEP]

"ASSOCIATION Type Field in Path Computation Element Protocol (PCEP) Numbers",
<<https://www.iana.org/assignments/pcep/pcep.xhtml#association-type-field>>.

[RFC4655] Farrel, A., Vasseur, J.-P., and J. Ash, "A Path Computation Element (PCE)-Based Architecture", [RFC 4655](#), DOI 10.17487/RFC4655, August 2006,
<<https://www.rfc-editor.org/info/rfc4655>>.

[RFC5246] Dierks, T. and E. Rescorla, "The Transport Layer Security (TLS) Protocol Version 1.2", [RFC 5246](#), DOI 10.17487/RFC5246, August 2008,
<<https://www.rfc-editor.org/info/rfc5246>>.

[RFC7420] Koushik, A., Stephan, E., Zhao, Q., King, D., and J. Hardwick, "Path Computation Element Communication Protocol (PCEP) Management Information Base (MIB) Module", [RFC 7420](#), DOI 10.17487/RFC7420, December 2014,
<<https://www.rfc-editor.org/info/rfc7420>>.

[RFC7942] Sheffer, Y. and A. Farrel, "Improving Awareness of Running Code: The Implementation Status Section", [BCP 205](#), [RFC 7942](#), DOI 10.17487/RFC7942, July 2016,
<<https://www.rfc-editor.org/info/rfc7942>>.

[RFC8342] Bjorklund, M., Schoenwaelder, J., Shafer, P., Watsen, K., and R. Wilton, "Network Management Datastore Architecture (NMDA)", [RFC 8342](https://www.rfc-editor.org/info/rfc8342), DOI 10.17487/RFC8342, March 2018, <<https://www.rfc-editor.org/info/rfc8342>>.

[Appendix A](#). The Full PCEP Data Model

The module, "ietf-pcep", defines the basic components of a PCE speaker. The tree depth in the tree is set to 10.

```
module: ietf-pcep
  +--rw pcep!
    +--rw entity
      +--rw addr inet:ip-address-no-zone
      +--rw enabled? boolean
      +--rw role pcep-role
      +--rw description? string
      +--rw speaker-entity-id? string {sync-opt}?
      +--rw admin-status? boolean
      +--ro index? uint32
      +--ro oper-status? pcep-oper-status
      +--rw domains
        | +--rw domains* [domain-type domain-info]
        |   +--rw domain-type identityref
        |   +--rw domain-info domain
      +--rw capability
        | +--rw capability? bits
        | +--rw pce-initiated? boolean {pce-initiated}?
        | +--rw include-db-ver? boolean {stateful,sync-opt}?
        | +--rw trigger-resync? boolean {stateful,sync-opt}?
        | +--rw trigger-initial-sync? boolean {stateful,sync-opt}?
        | +--rw incremental-sync? boolean {stateful,sync-opt}?
        | +--rw sr {sr}?
        |   +--rw enabled? boolean
        |   +--rw msd-limit? boolean
        |   +--rw nai? boolean
```



```

+--rw msd?                               uint8 {sr}?
+--rw pce-info
|   +--rw scope
|   |   +--rw path-scope?                bits
|   |   +--rw intra-area-pref?           uint8
|   |   +--rw inter-area-pref?           uint8
|   |   +--rw inter-as-pref?             uint8
|   |   +--rw inter-layer-pref?          uint8
|   +--rw neighbour-domains
|   |   +--rw domains* [domain-type domain-info]
|   |   |   +--rw domain-type             identityref
|   |   |   +--rw domain-info             domain
|   +--rw path-key {path-key}?
|   |   +--rw enabled?                    boolean
|   |   +--rw discard-timer?              uint32
|   |   +--rw reuse-time?                 uint32
|   |   +--rw pce-id?                    inet:ip-address-no-zone
+--rw connect-timer?                      uint16
+--rw connect-max-retry?                   uint32
+--rw init-back-off-timer?                 uint16
+--rw max-back-off-timer?                  uint32
+--ro open-wait-timer?                     uint16

```

```

+--ro keep-wait-timer?                    uint16
+--rw keepalive-timer?                    uint8
+--rw dead-timer?                         uint8
+--rw allow-negotiation?                  boolean
+--rw max-keepalive-timer?                 uint8
+--rw max-dead-timer?                     uint8
+--rw min-keepalive-timer?                 uint8
+--rw min-dead-timer?                     uint8
+--rw sync-timer?                         uint16 {svec}?
+--rw request-timer?                       uint16
+--rw max-sessions?                       uint32
+--rw max-unknown-reqs?                    uint32
+--rw max-unknown-msgs?                    uint32
+--rw pcep-notification-max-rate           uint32
+--rw stateful-parameter {stateful}?
|   +--rw state-timeout?                   uint32
|   +--rw redelegation-timeout?            uint32
|   +--rw rpt-non-pcep-lsp?                boolean
+--rw of-list {objective-function}?

```

```

|   +--rw objective-function* [of]
|   +--rw of      identityref
+--ro lsp-db {stateful}?
|   +--ro db-ver?          uint64 {sync-opt}?
|   +--ro association-list*
|   |   [type id source global-source extended-id]
|   |   {association}?
|   |   +--ro type          identityref
|   |   +--ro id            uint16
|   |   +--ro source        inet:ip-address-no-zone
|   |   +--ro global-source  uint32
|   |   +--ro extended-id    string
|   |   +--ro lsp* [plsp-id pcc-id lsp-id]
|   |   |   +--ro plsp-id    -> /pcep/entity/lsp-db/lsp/plsp-id
|   |   |   +--ro pcc-id     -> /pcep/entity/lsp-db/lsp/pcc-id
|   |   |   +--ro lsp-id     -> /pcep/entity/lsp-db/lsp/lsp-id
+--ro lsp* [plsp-id pcc-id lsp-id]
|   +--ro plsp-id          uint32
|   +--ro pcc-id           inet:ip-address-no-zone
|   +--ro source?          inet:ip-address-no-zone
|   +--ro destination?     inet:ip-address-no-zone
|   +--ro tunnel-id?       uint16
|   +--ro lsp-id           uint16
|   +--ro extended-tunnel-id? inet:ip-address-no-zone
|   +--ro admin-state?     boolean
|   +--ro operational-state? operational-state
|   +--ro delegated
|   |   +--ro enabled?     boolean
|   |   +--ro peer?       -> /pcep/entity/peers/peer/addr

```

```

|   |   +--ro srp-id?      uint32
+--ro initiation {pce-initiated}?
|   |   +--ro enabled?     boolean
|   |   +--ro peer?       -> /pcep/entity/peers/peer/addr
+--ro symbolic-path-name?  string
+--ro last-error?          identityref
+--ro pst?                 identityref
+--ro association-list*
|   |   [type id source global-source extended-id]
|   |   {association}?
|   |   +--ro type
|   |   |   -> /pcep/entity/lsp-db/association-list/type

```

```

|         +---ro id
|         |         -> /pcep/entity/lsp-db/association-list/id
|         +---ro source          leafref
|         +---ro global-source    leafref
|         +---ro extended-id      leafref
+---ro path-keys {path-key}?
|   +---ro path-keys* [path-key]
|     +---ro path-key          uint16
|     +---ro cps
|       +---ro explicit-route-objects* [index]
|         +---ro index          uint32
|         +---ro (type)?
|           +---:(numbered-node-hop)
|             | +---ro numbered-node-hop
|             |   +---ro node-id      te-node-id
|             |   +---ro hop-type?    te-hop-type
|           +---:(numbered-link-hop)
|             | +---ro numbered-link-hop
|             |   +---ro link-tp-id    te-tp-id
|             |   +---ro hop-type?    te-hop-type
|             |   +---ro direction?   te-link-direction
|           +---:(unnumbered-link-hop)
|             | +---ro unnumbered-link-hop
|             |   +---ro link-tp-id    te-tp-id
|             |   +---ro node-id      te-node-id
|             |   +---ro hop-type?    te-hop-type
|             |   +---ro direction?   te-link-direction
|           +---:(as-number)
|             | +---ro as-number-hop
|             |   +---ro as-number    inet:as-number
|             |   +---ro hop-type?    te-hop-type
|           +---:(label)
|             | +---ro label-hop
|             |   +---ro te-label
|             |   ...
+---ro pcc-original?    -> /pcep/entity/peers/peer/addr

```

```

|         +---ro req-id?          uint32
|         +---ro retrieved?       boolean
|         +---ro pcc-retrieved?   -> /pcep/entity/peers/peer/addr
|         +---ro creation-time?   yang:timestamp
|         +---ro discard-time?    uint32

```

```

|      +--ro reuse-time?          uint32
+--rw peers
  +--rw peer* [addr]
    +--rw addr                    inet:ip-address-no-zone
    +--rw role                    pcep-role
    +--rw description?            string
    +--rw domains
      | +--rw domains* [domain-type domain-info]
      |   +--rw domain-type      identityref
      |   +--rw domain-info      domain
    +--rw capability
      | +--rw capability?        bits
      | +--rw pce-initiated?     boolean
      | | {pce-initiated}?
      | +--rw include-db-ver?    boolean
      | | {stateful,sync-opt}?
      | +--rw trigger-resync?    boolean
      | | {stateful,sync-opt}?
      | +--rw trigger-initial-sync? boolean
      | | {stateful,sync-opt}?
      | +--rw incremental-sync?  boolean
      | | {stateful,sync-opt}?
      | +--rw sr {sr}?
      |   +--rw enabled?         boolean
      |   +--rw msd-limit?      boolean
      |   +--rw nai?            boolean
    +--rw msd?                    uint8 {sr}?
  +--rw pce-info
    | +--rw scope
    | | +--rw path-scope?        bits
    | | +--rw intra-area-pref?   uint8
    | | +--rw inter-area-pref?   uint8
    | | +--rw inter-as-pref?     uint8
    | | +--rw inter-layer-pref?  uint8
    | +--rw neighbour-domains
    |   +--rw domains* [domain-type domain-info]
    |   +--rw domain-type      identityref
    |   +--rw domain-info      domain
  +--rw delegation-pref?          uint8 {stateful}?
+--rw auth
  | +--rw (auth-type-selection)?
  |   +--:(auth-key-chain)
  |   | +--rw key-chain?

```

```

|         |         key-chain:key-chain-ref
|         +---:(auth-key)
|         |         +---rw crypto-algorithm             identityref
|         |         +---rw (key-string-style)?
|         |         |         +---:(keystring)
|         |         |         |         +---rw keystring?             string
|         |         |         +---:(hexadecimal)
|         |         |         |         {key-chain:hex-key-string}?
|         |         |         +---rw hexadecimal-string?
|         |         |         yang:hex-string
|         +---:(auth-tls) {tls}?
|         |         +---rw (role)?
|         |         |         +---:(server)
|         |         |         |         +---rw tls-server
|         |         |         |         ...
|         |         |         +---:(client)
|         |         |         +---rw tls-client
|         |         ...
+---ro discontinuity-time?      yang:timestamp
+---ro initiate-session?      boolean
+---ro session-exists?        boolean
+---ro session-up-time?       yang:timestamp
+---ro session-fail-time?     yang:timestamp
+---ro session-fail-up-time?  yang:timestamp
+---ro sessions
+---ro session* [initiator]
+---ro initiator              pcep-initiator
+---ro role?
|         -> /pcep/entity/role
+---ro state-last-change?     yang:timestamp
+---ro state?
|         pcep-sess-state
+---ro session-creation?      yang:timestamp
+---ro connect-retry?         yang:counter32
+---ro local-id?              uint8
+---ro remote-id?             uint8
+---ro keepalive-timer?       uint8
+---ro peer-keepalive-timer?  uint8
+---ro dead-timer?            uint8
+---ro peer-dead-timer?       uint8
+---ro ka-hold-time-rem?       uint8
+---ro overloaded?            boolean
+---ro overloaded-timestamp?   yang:timestamp
+---ro overload-time?         uint32
+---ro peer-overloaded?       boolean
+---ro peer-overloaded-timestamp? yang:timestamp
+---ro peer-overload-time?     uint32
+---ro lspdb-sync?            sync-state

```

Internet-Draft

PCE-YANG

January 2022

```

|         {stateful}?
+---ro recv-db-ver?                uint64
|         {stateful,sync-opt}?
+---ro of-list {objective-function}?
|   +---ro objective-function* [of]
|     +---ro of      identityref
+---ro pst-list
|   +---ro path-setup-type* [pst]
|     +---ro pst      identityref
+---ro assoc-type-list {association}?
|   +---ro assoc-type* [at]
|     +---ro at       identityref
+---ro speaker-entity-id?          string
|         {sync-opt}?

```

rpcs:

```

+---x trigger-resync {stateful,sync-opt}?
  +---w input
    +---w pcc?    -> /pcep/entity/peers/peer/addr

```

notifications:

```

+---n pcep-session-up
|   +---ro peer-addr?          -> /pcep/entity/peers/peer/addr
|   +---ro session-initiator?
|   |       -> /pcep/entity/peers/peer/sessions/session/initiator
|   +---ro state-last-change?  yang:timestamp
|   +---ro state?              pcep-sess-state
+---n pcep-session-down
|   +---ro peer-addr?          -> /pcep/entity/peers/peer/addr
|   +---ro session-initiator?  pcep-initiator
|   +---ro state-last-change?  yang:timestamp
|   +---ro state?              pcep-sess-state
+---n pcep-session-local-overload
|   +---ro peer-addr?          -> /pcep/entity/peers/peer/addr
|   +---ro session-initiator?
|   |       -> /pcep/entity/peers/peer/sessions/session/initiator
|   +---ro overloaded?         boolean
|   +---ro overloaded-timestamp? yang:timestamp
|   +---ro overload-time?      uint32
+---n pcep-session-local-overload-clear
|   +---ro peer-addr?
|   |       -> /pcep/entity/peers/peer/addr

```

```

|   +--ro overloaded?                boolean
|   +--ro overloaded-clear-timestamp? yang:timestamp
+---n pcep-session-peer-overload
|   +--ro peer-addr?
|   |       -> /pcep/entity/peers/peer/addr
|   +--ro session-initiator?

```

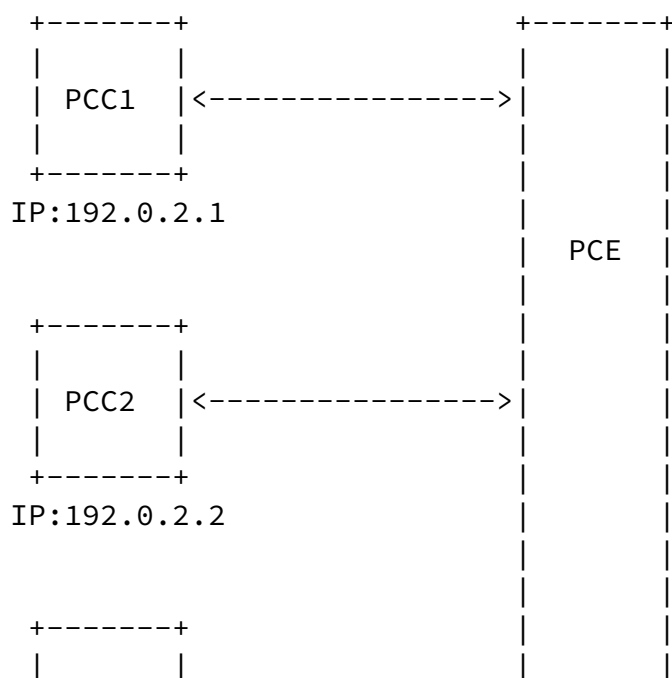
```

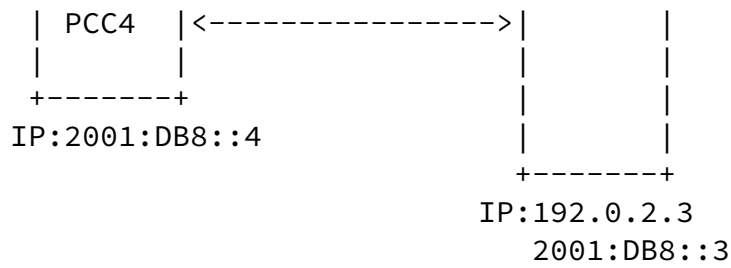
|   |       -> /pcep/entity/peers/peer/sessions/session/initiator
|   +--ro peer-overloaded?            boolean
|   +--ro peer-overloaded-timestamp?  yang:timestamp
|   +--ro peer-overload-time?         uint32
+---n pcep-session-peer-overload-clear
|   +--ro peer-addr?
|   |       -> /pcep/entity/peers/peer/addr
|   +--ro peer-overloaded?            boolean
|   +--ro peer-overloaded-clear-timestamp? yang:timestamp

```

[Appendix B](#). Example

The example below provide an overview of PCEP peer session informations and LSP-DB in the Yang Module.





at PCE:

```

{
  "entity": [
    {
      "addr": "192.0.2.3",

```

```

"oper-status": "oper-status-up",
"role":"pce",
"capability" : {
  "stateful": {
    "enabled": true
  }
}
"lsp-db" : [
  "lsp" : {
    "plsp-id": 3,
    "pcc-id" : "192.0.2.1",
    "source": "192.0.2.1",
    "destination": "192.0.2.4"
    "tunnel-id": 16,
    "lsp-id": 3,
    "extended-tunnel-id": 0,
    "oper-status": "oper-status-up",
    "delegated": true,
    "symbolic-path-name": "iewauh",
  },
  "lsp" : {
    "plsp-id": 4,
    "pcc-id" : "192.0.2.2",
    "source": "192.0.2.2",
    "destination": "192.0.2.5"
    "tunnel-id": 17,
    "lsp-id": 4
    "extended-tunnel-id": 0,

```



```

        "oper-status": "oper-status-up",
        "delegated": true,
        "symbolic-path-name": "iewauhiewauh",
        "extended-tunnel-id": 0
    }
]
"peers": [
    {
        "peer": {
            "addr": "192.0.2.1",
            "role": "pcc",

            "capability": {
                "stateful" : {
                    "enabled": true,
                    "active": yes,
                }
            }
        }
        "sessions": [
            {

```

```

        "session": {
            "initiator": "remote",
            "role": "pcc",
        }
    }
]
}
},
{
    "peer": {
        "addr": "192.0.2.2",
        "role": "pcc",

        "capability": {
            "stateful" : {
                "enabled": true,
                "active": true,
            }
        }
        "sessions": [
            {

```

```

        "session": {
            "initiator": "remote",
            "role": "pcc",
        }
    }
]
},
{
    "addr": "2001:DB8::3",
    "oper-status": "oper-status-up",
    "role": "pce",
    "peers": [
        {
            "peer": {
                "addr": "2001:DB8::4",
                "role": "pcc",
                "sessions": [
                    {
                        "session": {
                            "initiator": "remote",
                            "role": "pcc",
                        }
                    }
                ]
            }
        }
    ]
}

```

```

    }
}
]
}
}

```

[Appendix C.](#) Contributor Addresses

Rohit Pobbathi
Nokia Networks
India

EMail: rohit.pobbathi_ashok@nokia.com

Vinod KumarS
Huawei Technologies
Divyashree Techno Park, Whitefield
Bangalore, Karnataka 560066
India

EMail: vinods.kumar@huawei.com

Zafar Ali
Cisco Systems
Canada

EMail: zali@cisco.com

Xufeng Liu
Volta Networks

EMail: xufeng.liu.ietf@gmail.com

Young Lee
Samsung

EMail: younglee.tx@gmail.com

Udayasree Palle

EMail: udayasreereddy@gmail.com

Xian Zhang
Huawei Technologies
Bantian, Longgang District
Shenzhen 518129

P.R.China

EMail: zhang.xian@huawei.com

Avantika
ECI Telecom
India

EMail: avantika.srm@gmail.com

Shashikanth
Huawei Technologies
Divyashree Techno Park, Whitefield
Bangalore, Karnataka 560066
India

EMail: shashikanth.vh@huawei.com

Authors' Addresses

Dhruv Dhody (editor)
Huawei Technologies
Divyashree Techno Park, Whitefield
Bangalore 560066
Karnataka
India

Email: dhruv.ietf@gmail.com

Jonathan Hardwick
Metaswitch
100 Church Street
Enfield
EN2 6BQ
United Kingdom

Email: jonathan.hardwick@metaswitch.com

Vishnu Pavan Beeram
Juniper Networks
India

Email: vbeeram@juniper.net

Jeff Tantsura
Microsoft
United States of America

Email: jefftant.ietf@gmail.com

