

Softwire  
Internet-Draft  
Intended status: Standards Track  
Expires: October 7, 2019

S. Jiang, Ed.  
Huawei Technologies Co., Ltd  
Y. Fu, Ed.  
CNNIC  
B. Liu  
Huawei Technologies Co., Ltd  
P. Deacon  
IEA Software, Inc.  
C. Xie  
China Telecom  
T. Li  
Tsinghua University  
M. Boucadair, Ed.  
Orange  
April 5, 2019

RADIUS Attributes for Address plus Port (A+P) based Softwire Mechanisms  
[draft-ietf-softwire-map-radius-22](#)

## Abstract

IPv4-over-IPv6 transition mechanisms provide IPv4 connectivity services over IPv6 native networks during the IPv4/IPv6 co-existence period. DHCPv6 options have been defined for configuring clients for Lightweight 4over6, Mapping of Address and Port with Encapsulation, and Mapping of Address and Port using Translation unicast softwire mechanisms, and also multicast softwires. However, in many networks, configuration information is stored in an Authentication, Authorization, and Accounting server which utilizes the RADIUS protocol to provide centralized management for users. When a new transition mechanism is developed, new RADIUS attributes need to be defined correspondingly.

This document defines new RADIUS attributes to carry Address plus Port based softwire configuration parameters from an Authentication, Authorization, and Accounting server to a Broadband Network Gateway. Both unicast and multicast attributes are covered.

## Status of This Memo

This Internet-Draft is submitted in full conformance with the provisions of [BCP 78](#) and [BCP 79](#).

Internet-Drafts are working documents of the Internet Engineering Task Force (IETF). Note that other groups may also distribute working documents as Internet-Drafts. The list of current Internet-Drafts is at <https://datatracker.ietf.org/drafts/current/>.

Internet-Drafts are draft documents valid for a maximum of six months and may be updated, replaced, or obsoleted by other documents at any time. It is inappropriate to use Internet-Drafts as reference material or to cite them other than as "work in progress."

This Internet-Draft will expire on October 7, 2019.

## Copyright Notice

Copyright (c) 2019 IETF Trust and the persons identified as the document authors. All rights reserved.

This document is subject to [BCP 78](https://trustee.ietf.org/license-info) and the IETF Trust's Legal Provisions Relating to IETF Documents (<https://trustee.ietf.org/license-info>) in effect on the date of publication of this document. Please review these documents carefully, as they describe your rights and restrictions with respect to this document. Code Components extracted from this document must include Simplified BSD License text as described in Section 4.e of the Trust Legal Provisions and are provided without warranty as described in the Simplified BSD License.

## Table of Contents

<a href="#">1.</a>	<a href="#">Introduction</a>	<a href="#">3</a>
<a href="#">2.</a>	<a href="#">Terminology</a>	<a href="#">5</a>
<a href="#">3.</a>	<a href="#">New RADIUS Attributes</a>	<a href="#">6</a>
<a href="#">3.1.</a>	<a href="#">Softwire46-Configuration Attribute</a>	<a href="#">7</a>
<a href="#">3.1.1.</a>	<a href="#">Softwire46 Attributes</a>	<a href="#">8</a>
<a href="#">3.1.1.1.</a>	<a href="#">Softwire46-MAP-E Attribute</a>	<a href="#">10</a>
<a href="#">3.1.1.2.</a>	<a href="#">Softwire46-MAP-T Attribute</a>	<a href="#">10</a>
<a href="#">3.1.1.3.</a>	<a href="#">Softwire46-Lightweight-4over6 Attribute</a>	<a href="#">11</a>
<a href="#">3.1.2.</a>	<a href="#">Softwire46 Sub-Attributes</a>	<a href="#">11</a>
<a href="#">3.1.3.</a>	<a href="#">Specification of the Softwire46 Sub-Attributes</a>	<a href="#">12</a>
<a href="#">3.1.3.1.</a>	<a href="#">Softwire46-Rule Attribute</a>	<a href="#">12</a>
<a href="#">3.1.3.2.</a>	<a href="#">Softwire46-BR Attribute</a>	<a href="#">13</a>
<a href="#">3.1.3.3.</a>	<a href="#">Softwire46-DMR Attribute</a>	<a href="#">13</a>
<a href="#">3.1.3.4.</a>	<a href="#">Softwire46-V4V6Bind Attribute</a>	<a href="#">14</a>
<a href="#">3.1.3.5.</a>	<a href="#">Softwire46-PORTPARAMS Attribute</a>	<a href="#">14</a>
<a href="#">3.1.4.</a>	<a href="#">Sub-Attributes for Softwire46-Rule</a>	<a href="#">15</a>
<a href="#">3.1.4.1.</a>	<a href="#">Rule-IPv6-Prefix Attribute</a>	<a href="#">15</a>
<a href="#">3.1.4.2.</a>	<a href="#">Rule-IPv4-Prefix Attribute</a>	<a href="#">16</a>
<a href="#">3.1.4.3.</a>	<a href="#">EA-Length Attribute</a>	<a href="#">16</a>
<a href="#">3.1.5.</a>	<a href="#">Attributes for Softwire46-v4v6Bind</a>	<a href="#">17</a>
<a href="#">3.1.5.1.</a>	<a href="#">IPv4-address Attribute</a>	<a href="#">17</a>
<a href="#">3.1.5.2.</a>	<a href="#">Bind-IPv6-Prefix Attribute</a>	<a href="#">17</a>
<a href="#">3.1.6.</a>	<a href="#">Attributes for S46-PORTPARAMS</a>	<a href="#">18</a>
<a href="#">3.1.6.1.</a>	<a href="#">PSID-offset Attribute</a>	<a href="#">18</a>



3.1.6.2.	PSID-len Attribute . . . . .	19
3.1.6.3.	PSID Attribute . . . . .	19
3.2.	Softwire46-Priority Attribute . . . . .	20
3.2.1.	Softwire46-Option-Code . . . . .	21
3.3.	Softwire46-Multicast Attribute . . . . .	22
3.3.1.	ASM-Prefix64 Attribute . . . . .	23
3.3.2.	SSM-Prefix64 Attribute . . . . .	24
3.3.3.	U-Prefix64 Attribute . . . . .	24
4.	A Sample Configuration Process with RADIUS . . . . .	24
5.	Table of Attributes . . . . .	27
6.	Security Considerations . . . . .	28
7.	IANA Considerations . . . . .	28
7.1.	New RADIUS Attributes . . . . .	28
7.2.	RADIUS Softwire46 Configuration and Multicast Attributes	29
7.3.	Softwire46 Mechanisms and Their Identifying Option Codes	29
8.	Contributing Authors . . . . .	30
9.	Acknowledgements . . . . .	31
10.	References . . . . .	32
10.1.	Normative References . . . . .	32
10.2.	Informative References . . . . .	33
Appendix A.	DHCPv6 to RADIUS Field Mappings . . . . .	35
A.1.	OPTION_S46_RULE (89) to Softwire46-Rule Sub-TLV Field Mappings . . . . .	35
A.2.	OPTION_S46_BR (90) to Softwire46-BR Field Mappings . . . . .	35
A.3.	OPTION_S46_DMR (91) to Softwire46-DMR . . . . .	35
A.4.	OPTION_S46_V4V6BIND (92) to Softwire46-V4V6Bind . . . . .	35
A.5.	OPTION_S46_PORTPARAMS (93) to Softwire46-PORTPARAMS Field Mappings . . . . .	36
A.6.	OPTION_S46_PRIORITY (111) to Softwire46-PORTPARAMS Field Mappings . . . . .	36
A.7.	OPTION_V6_PREFIX64 (113) to Softwire46-Multicast Attribute Field Mappings . . . . .	36
Authors' Addresses	. . . . .	36

## 1. Introduction

Providers have started deploying and transitioning to IPv6. Several IPv4 service continuity mechanisms based on the Address plus Port (A+P) [RFC6346] have been proposed for providing unicast IPv4 over IPv6-only infrastructure, such as Mapping of Address and Port with Encapsulation (MAP-E) [RFC7597], Mapping of Address and Port using Translation (MAP-T) [RFC7599], and Lightweight 4over6 [RFC7596]. Also, [RFC8114] specifies a generic solution for the delivery of IPv4 multicast services to IPv4 clients over an IPv6 multicast network. For each of these mechanisms, DHCPv6 options have been specified for client configuration.



In many networks, user configuration information is stored in an Authentication, Authorization, and Accounting (AAA) server. AAA servers generally communicate using the Remote Authentication Dial In User Service (RADIUS) [[RFC2865](#)] protocol. In a fixed broadband network, a Broadband Network Gateway (BNG) acts as the access gateway for users. That is, the BNG acts as both an AAA client to the AAA server, and a DHCPv6 server for DHCPv6 messages sent by clients. Throughout this document, the term BNG describes a device implementing both the AAA client and DHCPv6 server functions.

Since IPv4-in-IPv6 softwire configuration information is stored in an AAA server, and user configuration information is mainly transmitted through DHCPv6 protocol between the BNGs and Customer Premises Equipment (CEs, a.k.a., CPE), new RADIUS attributes are needed to propagate the information from the AAA servers to BNGs.

The RADIUS attributes defined in this document provide configuration to populate the corresponding DHCPv6 options for unicast and multicast softwire configuration, specifically:

- o "Mapping of Address and Port with Encapsulation (MAP-E)" [[RFC7597](#)] (DHCPv6 options defined in [[RFC7598](#)]).
- o "Mapping of Address and Port using Translation (MAP-T)" [[RFC7599](#)] (DHCPv6 options defined in [[RFC7598](#)]).
- o "Lightweight 4over6: An Extension to the Dual-Stack Lite Architecture" [[RFC7596](#)] (DHCPv6 options defined in [[RFC7598](#)]).
- o "Unified IPv4-in-IPv6 Softwire Customer Premises Equipment (CPE): A DHCPv6-Based Prioritization Mechanism" [[RFC8026](#)].
- o "Delivery of IPv4 Multicast Services to IPv4 Clients over an IPv6 Multicast Network" [[RFC8114](#)] (DHCPv6 options defined in [[RFC8115](#)]).

The contents of the attributes defined in this document have a 1:1 mapping into the fields of the various DHCPv6 options in [[RFC7598](#)], [[RFC8026](#)], and [[RFC8115](#)]. Table 1 shows how the DHCPv6 options map to the corresponding RADIUS attribute. For detailed mappings between each DHCPv6 option field and the corresponding RADIUS Attribute or field, see [Appendix A](#).



-----+-----	-----+-----
DHCPv6 Option	RADIUS Attribute
-----+-----	-----+-----
OPTION_S46_RULE (89)	Softwire46-Rule
OPTION_S46_BR (90)	Softwire46-BR
OPTION_S46_DMR (91)	Softwire46-DMR
OPTION_S46_V4V6BIND (92)	Softwire46-v4v6Bind
OPTION_S46_PORTPARAMS (93)	Softwire46-PORTPARAMS
OPTION_S46_PRIORITY (111)	Softwire46-Priority Attribute
OPTION_V6_PREFIX64 (113)	Softwire46-Multicast Attribute
-----+-----	-----+-----

Table 1: Mapping between DHCPv6 Options and RADIUS Attributes

A RADIUS attribute for Dual-Stack Lite [[RFC6333](#)] is defined in [[RFC6519](#)].

## 2. Terminology

The key words "MUST", "MUST NOT", "REQUIRED", "SHALL", "SHALL NOT", "SHOULD", "SHOULD NOT", "RECOMMENDED", "NOT RECOMMENDED", "MAY", and "OPTIONAL" in this document are to be interpreted as described in [[RFC2119](#)] [[RFC8174](#)] when, and only when, they appear in all capitals, as shown here.

The reader should be familiar with the concepts and terms defined in [[RFC7596](#)], [[RFC7597](#)], [[RFC7599](#)], and [[RFC8026](#)].

The terms "multicast Basic Bridging BroadBand" element (mB4) and "multicast Address Family Transition Router" element (mAFTR) are defined in [[RFC8114](#)].

Softwire46 (S46) is used throughout to denote any of the IPv4-in-IPv6 softwire mechanisms listed above. Additionally, the following abbreviations are used within the document:

- o BMR: Basic Mapping Rule
- o BNG: Broadband Network Gateway
- o BR: Border Relay
- o CE: Customer Edge
- o DMR: Default Mapping Rule
- o EA: Embedded Address





- o FMR: Forwarding Mapping Rule
- o PSID: Port Set Identifier
- o TLV: Type, Length, Value
- o MAP-E: Mapping of Address and Port with Encapsulation
- o MAP-T: Mapping of Address and Port using Translation

### **3. New RADIUS Attributes**

This section defines the following attributes:

#### **1. Softwire46-Configuration Attribute ([Section 3.1](#)):**

This attribute carries the configuration information for MAP-E, MAP-T, and Lightweight 4over6. The configuration information for each Softwire46 mechanism is carried in the corresponding Softwire46 attributes. Different attributes are required for each Softwire46 mechanism.

#### **2. Softwire46-Priority Attribute ([Section 3.2](#)):**

Depending on the deployment scenario, a client may support several different Softwire46 mechanisms and so request configuration for more than one Softwire46 mechanism at a time. The Softwire46-Priority Attribute contains information allowing the client to prioritize which mechanism to use, corresponding to OPTION\_S46\_PRIORITY defined in [[RFC8026](#)].

#### **3. Softwire46-Multicast Attribute ([Section 3.3](#)):**

This attribute conveys the IPv6 prefixes to be used in [[RFC8114](#)] to synthesize IPv4-embedded IPv6 addresses. The BNG uses the IPv6 prefixes returned in the RADIUS Softwire46-Multicast Attribute to populate the DHCPv6 PREFIX64 Option [[RFC8115](#)].

All of these attributes are allocated from the RADIUS "Extended Type" code space per [[RFC6929](#)].

All of these attribute designs follow [[RFC6158](#)] and [[RFC6929](#)].

This document adheres to [[RFC8044](#)] for defining the new attributes.



### **3.1. Software46-Configuration Attribute**

This attribute is of type "tlv", as defined in the RADIUS Protocol Extensions [[RFC6929](#)]. It contains some sub-attributes, with the following requirements:

The Software46-Configuration Attribute MUST contain one or more of the following attributes: Software46-MAP-E, Software46-MAP-T, and/or Software46-Lightweight-4over6.

The Software46-Configuration Attribute conveys the configuration information for MAP-E, MAP-T, or Lightweight 4over6. The BNG SHALL use the configuration information returned in the RADIUS attribute to populate the DHCPv6 Software46 Container Option defined in [Section 5 of \[RFC7598\]](#).

The Software46-Configuration Attribute MAY appear in an Access-Accept packet. It MAY also appear in an Access-Request packet.

The Software46-Configuration Attribute MAY appear in a CoA-Request packet.

The Software46-Configuration Attribute MAY appear in an Accounting-Request packet.

The Software46-Configuration Attribute MUST NOT appear in any other RADIUS packet.

The Software46-Configuration Attribute MUST only encapsulate one or more of the Software46 attributes defined in this document.

The Software46-Configuration Attribute is structured as follows:



**Type**

241 (To be confirmed by IANA).

**Length**

Indicates the total length, in bytes, of all fields of this attribute, including the Type, Length, Extended-Type, and the entire length of the embedded attributes.

**Extended-Type**

TBD1

**Value**

Contains one or more of the following attributes. Each attribute type may appear at most once:

**Software46-MAP-E**

For configuring MAP-E clients. For the construction of this attribute, refer to [Section 3.1.1.1](#).

**Software46-MAP-T**

For configuring MAP-T clients. For the construction of this attribute, refer to [Section 3.1.1.2](#).

**Software46-Lightweight-4over6**

For configuring Lightweight 4over6 clients. For the construction of this attribute, refer to [Section 3.1.1.3](#).

The Software46-Configuration Attribute is associated with the following identifier: 241.Extended-Type(TBD1).

**[3.1.1. Software46 Attributes](#)**

The Software46 attributes can only be encapsulated in the Software46-Configuration Attribute. Depending on the deployment scenario, a client might request for more than one transition mechanism at a time. There MUST be at least one Software46 attribute encapsulated in one Software46-Configuration Attribute. There MUST be at most one instance of each type of Software46 attribute encapsulated in one Software46-Configuration Attribute.

There are three types of Software46 attributes, namely:

1. Software46-MAP-E ([Section 3.1.1.1](#))
2. Software46-MAP-T ([Section 3.1.1.2](#))
3. Software46-Lightweight 4over6 ([Section 3.1.1.3](#))



Each type of Softwire46 attribute contains a number of sub-attributes, defined in [Section 3.1.3](#). The hierarchy of the Softwire46 attributes is shown in Figure 1. [Section 3.1.2](#) describes which sub-attributes are mandatory, optional, or not permitted for each defined Softwire46 attribute.

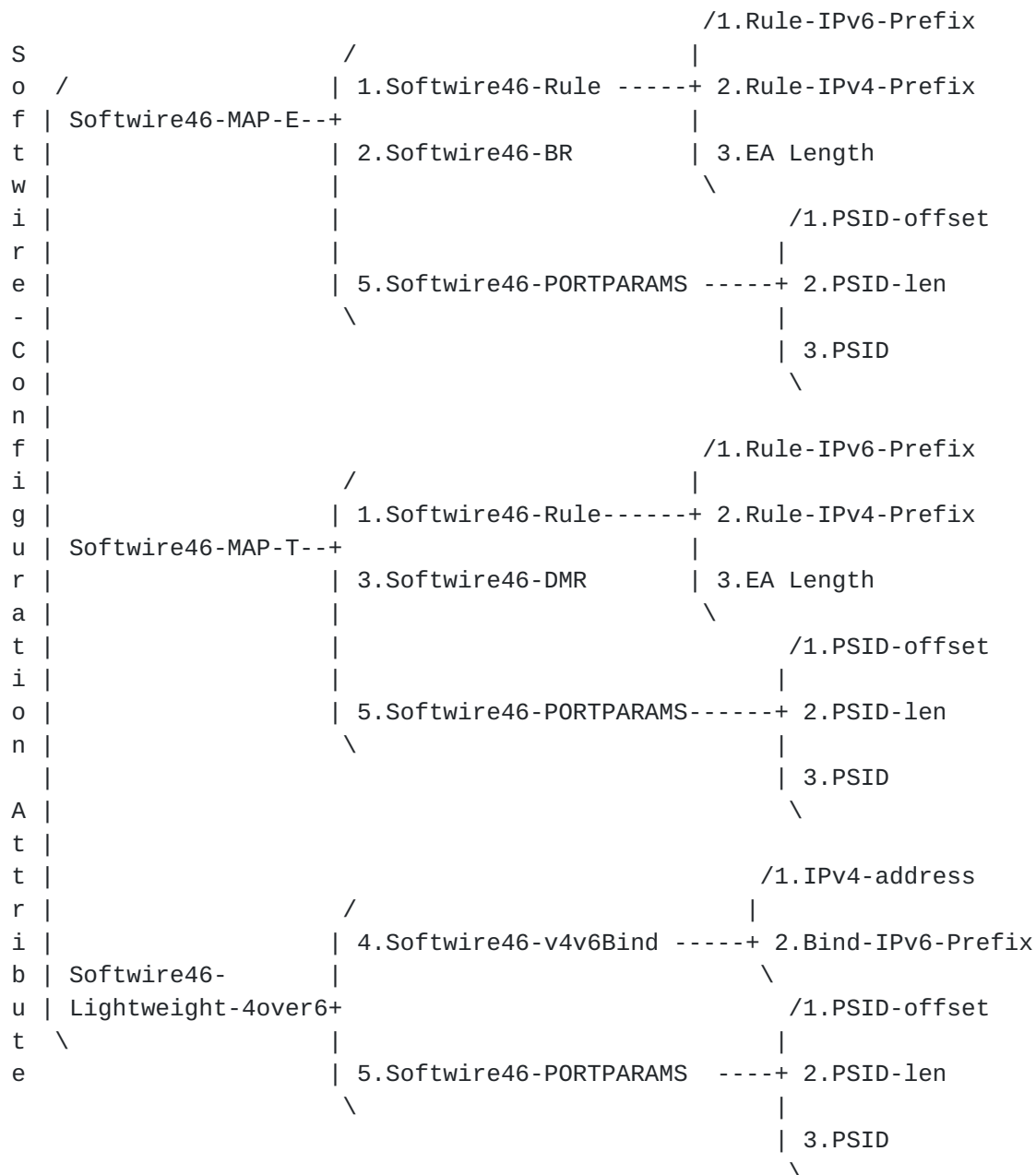


Figure 1: Softwire46 Attributes Hierarchy





#### **3.1.1.1. Software46-MAP-E Attribute**

Software46-MAP-E attribute is designed for carrying the configuration information for MAP-E. The structure of Software46-MAP-E is shown below:

TLV-Type

1

TLV-Length

Indicates the length of this attribute, including the TLV-Type, TLV-Length, and TLV-Value fields.

TLV-Value

Contains a set of sub-attributes, with the following requirements:

It MUST contain Software46-Rule, defined in [Section 3.1.3.1](#).

It MUST contain Software46-BR, defined in [Section 3.1.3.2](#).

It MAY contain Software46-PORTPARAMS, defined in [Section 3.1.3.5](#).

#### **3.1.1.2. Software46-MAP-T Attribute**

Software46-MAP-T attribute is designed for carrying the configuration information for MAP-T. The structure of Software46-MAP-T is shown below:

TLV-Type

2

TLV-Length

Indicates the length of this attribute, including the TLV-Type, TLV-Length, and TLV-Value fields.

TLV-Value

Contains a set of sub-attributes, with the following requirements:

It MUST contain Software46-Rule, defined in [Section 3.1.3.1](#).

It MUST contain Software46-DMR, defined in [Section 3.1.3.3](#).

It MAY contain Software46-PORTPARAMS, defined in [Section 3.1.3.5](#).



### 3.1.1.3. Software46-Lightweight-4over6 Attribute

Software46-Lightweight-4over6 attribute is designed for carrying the configuration information for Lightweight 4over6. The structure of Software46-Lightweight-4over6 is shown below:

TLV-Type  
3

TLV-Length  
Indicates the length of this attribute, including the TLV-Type, TLV-Length, and TLV-Value fields.

TLV-Value  
Contains a set of sub-attributes as follows:

It MUST contain Software46-BR, defined in [Section 3.1.3.2](#).

It MUST contain Software46-V4V6Bind, defined in [Section 3.1.3.4](#).

It MAY contain Software46-PORTPARAMS, defined in [Section 3.1.3.5](#).

### 3.1.2. Software46 Sub-Attributes

Table 2 shows which encapsulated sub-attributes are mandatory, optional, or not permitted for each defined Software46 attribute.

Sub-Attributes	MAP-E	MAP-T	Lightweight 4over6
Software46-BR	1	0	1
Software46-Rule	1	1	0
Software46-DMR	0	1	0
Software46-V4V6Bind	0	0	1
Software46-PORTPARAMS	0-1	0-1	0-1

Table 2: Software46 Sub-Attributes

The following table defines the meaning of the above table entries.

0	Not Permitted
0+	Optional, zero or more instances of the attribute may be present.
0-1	Optional, zero or one instance of the attribute may be present.
1	Mandatory



### **3.1.3. Specification of the Softwire46 Sub-Attributes**

#### **3.1.3.1. Softwire46-Rule Attribute**

Softwire46-Rule can only be encapsulated in Softwire46-MAP-E ([Section 3.1.1.1](#)) or Softwire46-MAP-T ([Section 3.1.1.2](#)). Depending on the deployment scenario, one Basic Mapping Rule (BMR) and zero or more Forwarding Mapping Rules (FMRs) MUST be included in one Softwire46-MAP-E or Softwire46-MAP-T.

Each type of Softwire46-Rule also contains a number of sub-attributes, including Rule-IPv6-Prefix, Rule-IPv4-Prefix, and EA-Length. The structure of the sub-attributes for Softwire46-Rule is defined in [Section 3.1.4](#).

Defining multiple TLV-types achieves the same design goals as the "Softwire46 Rule Flags" defined in [Section 4.1 of \[RFC7598\]](#). Using TLV-type set to 4 is equivalent to setting the F-flag in the OPTION\_S46\_RULE S46 Rule Flags field.

##### TLV-Type

- 4 Basic Mapping Rule only (not to be used for forwarding)
- 5 Forwarding Permitted Mapping Rule (may be used for forwarding. Can also be a Basic Mapping Rule)

##### TLV-Length

Indicates the length of this attribute, including the TLV-Type, TLV-Length, and TLV-Value fields.

##### Data Type

The attribute Softwire46-Rule is of type tlv ([Section 3.13 of \[RFC8044\]](#)).

##### TLV-Value

This field contains a set of attributes as follows:

##### Rule-IPv6-Prefix

This attribute contains the IPv6 prefix for use in the MAP rule. Refer to [Section 3.1.4.1](#).

##### Rule-IPv4-Prefix

This attribute contains the IPv4 prefix for use in the MAP rule. Refer to [Section 3.1.4.2](#).

##### EA-Length

This attribute contains the Embedded-Address (EA) bit length. Refer to [Section 3.1.4.1](#).



### **3.1.3.2. Software46-BR Attribute**

Software46-BR can only be encapsulated in Software46-MAP-E ([Section 3.1.1.1](#)) or Software46-Lightweight-4over6 ([Section 3.1.1.3](#)).

There MUST be at least one Software46-BR included in each Software46-MAP-E or Software46-Lightweight-4over6.

The structure of Software46-BR is shown below:

TLV-Type

6

TLV-Length

18 octets

Data Type

The attribute Software46-BR is of type ip6addr ([Section 3.9 of \[RFC8044\]](#)).

TLV-Value

br-ipv6-address. A fixed-length field of 16 octets that specifies the IPv6 address for the Software46 Border Relay (BR).

### **3.1.3.3. Software46-DMR Attribute**

Software46-DMR may only appear in Software46-MAP-T ([Section 3.1.1.2](#)). There MUST be exactly one Software46-DMR included in one Software46-MAP-T.

The structure of Software46-DMR is shown below:

TLV-Type

7

TLV-Length

4 + length of dmr-ipv6-prefix specified in octets.

Data Type

The attribute Software46-DMR is of type ip6pref ([Section 3.10 of \[RFC8044\]](#)).

TLV-Value

dmr-ipv6-prefix. A variable-length field specifying the IPv6 prefix for the BR. This field is right-padded with zeros to the nearest octet boundary when dmr-prefix6-len is not divisible by 8. Prefixes with from 0 to 96 are allowed.





#### **3.1.3.4. Software46-V4V6Bind Attribute**

Software46-V4V6Bind may only be encapsulated in Software46-Lightweight-4over6 ([Section 3.1.1.3](#)). There MUST be exactly one Software46-V4V6Bind included in each Software46-Lightweight-4over6.

The structure of Software46-V4V6Bind is shown below:

TLV-Type

8

TLV-Length

Indicates the length of this attribute, including the TLV-Type, TLV-Length, and TLV-Value fields.

Data Type

The attribute Software46-V4V6Bind is of type tlv ([Section 3.13 of \[RFC8044\]](#)).

TLV-Value

This field contains a set of attributes as follows:

IPv4-address

This attribute contains an IPv4 address, used to specify the full or shared IPv4 address of the CE. Refer to [Section 3.1.5.1](#).

Bind-IPv6-Prefix

This attribute contains an IPv6 prefix used to indicate which configured prefix the Software46 CE should use for constructing the software. Refer to [Section 3.1.5.2](#).

#### **3.1.3.5. Software46-PORTPARAMS Attribute**

Software46-PORTPARAMS is optional. It is used to specify port set information for IPv4 address sharing between clients. Software46-PORTPARAMS MAY be included in any of the Software46 attributes.

The structure of Software46-PORTPARAMS is shown below:



TLV-Type

9

TLV-Length

Indicates the length of this attribute, including the TLV-Type, TLV-Length, and TLV-Value fields.

Data Type

The attribute Software46-PORTPARAMS is of type tlv ([Section 3.13 of \[RFC8044\]](#)).

TLV-Value

This field contains a set of attributes as follows:

PSID-offset

This attribute specifies the numeric value for the Software46 algorithm's excluded port range/offset bits (a bits). Refer to [Section 3.1.6.1](#).

PSID-len

This attribute specifies the number of significant bits in the PSID field (also known as 'k'). Refer to [Section 3.1.6.2](#).

PSID

This attribute specifies PSID value. Refer to [Section 3.1.6.3](#).

#### **3.1.4. Sub-Attributes for Software46-Rule**

There are two types of Software46-Rule: the Basic Mapping Rule and the Forwarding Mapping Rule, indicated by the value in the TLV-Type field of Software46-Rule (see [Section 3.1.3.1](#)).

Each type of Software46-Rule also contains a number of Sub-attributes as detailed in the following sub-sections.

##### **3.1.4.1. Rule-IPv6-Prefix Attribute**

Rule-IPv6-Prefix is REQUIRED for every Software46-Rule. There MUST be exactly one Rule-IPv6-Prefix encapsulated in each type of Software46-Rule.

Rule-IPv6-Prefix follows the framed IPv6 prefix designed in [\[RFC3162\]](#) and [\[RFC8044\]](#).

The structure of Rule-IPv6-Prefix is shown below:



TLV-Type

10

TLV-Length

20 octets

Data Type

The attribute Rule-IPv6-Prefix is of type ipv6pref ([Section 3.10](#) of [\[RFC8044\]](#)).

TLV-Value

rule-ipv6-prefix. 128-bits long field that specifies an IPv6 prefix appearing in the MAP rule.

#### **[3.1.4.2.](#) Rule-IPv4-Prefix Attribute**

This attribute is used to convey the MAP Rule IPv4 prefix. The structure of Rule-IPv4-Prefix is shown below:

TLV-Type

11

TLV-Length

8 octets

Data Type

The attribute Rule-IPv4-Prefix is of type ipv4pref ([Section 3.11](#) of [\[RFC8044\]](#)).

TLV-Value

rule-ipv4-prefix. 32-bits long. Specifies the IPv4 prefix appearing in the MAP rule.

#### **[3.1.4.3.](#) EA-Length Attribute**

This attribute is used to convey the Embedded-Address(EA) bit length. The structure of EA-Length is shown below:



TLV-Type

12

TLV-Length

6 octets

Data Type

The attribute EA-Length is of type integer ([Section 3.1 of \[RFC8044\]](#)).

TLV-Value

EA-len; 32-bits long. Specifies the Embedded-Address(EA) bit length. Allowed values range from 0 to 48.

### **[3.1.5.](#) Attributes for Softwire46-v4v6Bind**

#### **[3.1.5.1.](#) IPv4-address Attribute**

The IPv4-address MAY be used to specify the full or shared IPv4 address of the CE.

The structure of IPv4-address is shown below:

TLV-Type

13

TLV-Length

6 octets

Data Type

The attribute IPv4-address is of type ipv4addr ([Section 3.8 of \[RFC8044\]](#)).

TLV-Value

32-bits long. Specifies the IPv4 address to appear in Softwire46-V4V6Bind ([Section 3.1.3.4](#)).

#### **[3.1.5.2.](#) Bind-IPv6-Prefix Attribute**

The Bind-IPv6-Prefix is used by the CE to identify the correct IPv6 prefix to be used as the tunnel source.

The structure of Bind-IPv6-Prefix is shown below:





TLV-Type

14

TLV-Length

4 + length of bind-ipv6-prefix specified in octets.

Data Type

The attribute Bind-IPv6-Prefix is of type ipv6pref ([Section 3.10 of \[RFC8044\]](#)).

TLV-Value

bind-ipv6-prefix. A variable-length field specifying the IPv6 prefix or address for the Softwire46 CE. This field is right-padded with zeros to the nearest octet boundary when bindprefix6-len is not divisible by 8.

### **[3.1.6.](#) Attributes for S46-PORTPARAMS**

#### **[3.1.6.1.](#) PSID-offset Attribute**

This attribute is used to convey the Port Set Identifier offset as defined in [\[RFC7597\]](#). This attribute is encoded 32 bits as per the recommendation in [Appendix A.2.1 of \[RFC6158\]](#).

The structure of PSID-offset is shown below:

TLV-Type

15

TLV-Length

6 octets

Data Type

The attribute PSID-offset is of type integer ([Section 3.1 of \[RFC8044\]](#)).

TLV-Value

Contains the PSID-Offset (8-bits) right justified, and the unused bits in this field MUST be set to zero. This field that specifies the numeric value for the Softwire46 algorithm's excluded port range/offset bits (a bits), as per [Section 5.1 of RFC7597](#). Allowed values are between 0 and 15. Default values for this field are specific to the Softwire mechanism being implemented and are defined in the relevant specification document.



### **3.1.6.2. PSID-len Attribute**

This attribute is used to convey the PSID length as defined in [\[RFC7597\]](#). This attribute is encoded 32 bits as per the recommendation in [Appendix A.2.1 of \[RFC6158\]](#).

The structure of PSID-len is shown below:

TLV-Type

16

TLV-Length

6 octets

Data Type

The attribute PSID-len is of type integer ([Section 3.1 of \[RFC8044\]](#)).

TLV-Value

Contains the PSID-len (8-bits) right justified, and the unused bits in this field MUST be set to zero. This field specifies the number of significant bits in the PSID field (also known as 'k'). When set to 0, the PSID field is to be ignored. After the first 'a' bits, there are k bits in the port number representing the value of the PSID. Subsequently, the address sharing ratio would be  $2^k$ .

### **3.1.6.3. PSID Attribute**

This attribute is used to convey the PSID as defined in [\[RFC7597\]](#). This attribute is encoded 32 bits as per the recommendation in [Appendix A.2.1 of \[RFC6158\]](#).

The structure of PSID is shown below:



TLV-Type  
17

TLV-Length  
6 octets

Data Type  
The attribute Bind-IPv6-Prefix is of type integer ([Section 3.1 of \[RFC8044\]](#)).

TLV-Value  
Contains the PSID (16-bits) right justified, and the unused bits in this field MUST be set to zero.  
The PSID value algorithmically identifies a set of ports assigned to a CE. The first k bits on the left of this 2-octet field is the PSID value. The remaining (16-k) bits on the right are padding zeros.

### **[3.2.](#) Software46-Priority Attribute**

The Software46-Priority Attribute includes an ordered list of Software64 mechanisms allowing the client to prioritize which mechanism to use, corresponding to OPTION\_S46\_PRIORITY defined in [\[RFC8026\]](#). The following requirements apply:

The Software46-Priority Attribute MAY appear in an Access-Accept packet. It MAY also appear in an Access-Request packet.

The Software46-Priority Attribute MAY appear in a CoA-Request packet.

The Software46-Priority Attribute MAY appear in an Accounting-Request packet.

The Software46-Priority Attribute MUST NOT appear in any other RADIUS packet.

The Softwrie46-Priority Attribute is structured as follows:



**Type**

241 (To be confirmed by IANA)

**Length**

Indicates the length of this attribute,  
including the Type, Length, Extended-Type and Value fields.

**Extended-Type**

TBD5

**TLV-Value**

The attribute include one or more Softwire46-Option-Code TLVs:  
A Softwire46-Priority Attribute MUST contain at least one  
Softwire46-Option-Code TLV ([Section 3.2.1](#)).

Softwire46 mechanisms are prioritized in the appearance order  
of the in the Softwire46-Priority Attribute.

The Softwire46-Priority Attribute is associated with the following  
identifier: 241.Extended-Type (TBD5).

**[3.2.1](#). Softwire46-Option-Code**

This attribute is used to convey an option code assigned to a  
Softwire64 mechanism [[RFC8026](#)]. This attribute is encoded 32 bits as  
per the recommendation in [Appendix A.2.1 of \[RFC6158\]](#).

The structure of Softwire46-Option-Code is shown below:

**TLV-Type**

18

**TLV-Length**

6 octets

**Data Type**

The attribute Softwire46-Option-Code is of type integer  
([Section 3.1 of \[RFC8044\]](#)).

**TLV-Value**

A 32-bit IANA-registered option code representing a Softwire46  
mechanism. The codes and their corresponding Softwire46  
mechanisms are listed in [Section 7.3](#).





### **3.3. Software46-Multicast Attribute**

The Software46-Multicast Attribute conveys the IPv6 prefixes to be used to synthesize multicast and unicast IPv4-embedded IPv6 addresses as per [\[RFC8114\]](#). This attribute is of type "tlv" and contains additional TLVs. The following requirements apply:

The BNG SHALL use the IPv6 prefixes returned in the RADIUS Software46-Multicast Attribute to populate the DHCPv6 PREFIX64 Option [\[RFC8115\]](#).

This attribute MAY be used in Access-Request packets as a hint to the RADIUS server. For example, if the BNG is pre-configured for Software46-Multicast, these prefixes MAY be inserted in the attribute. The RADIUS server MAY ignore the hint sent by the BNG, and it MAY assign a different Software46-Multicast Attribute.

The Software46-Multicast Attribute MAY appear in an Access-Request packet.

The Software46-Multicast Attribute MAY appear in an Access-Accept packet.

The Software46-Multicast Attribute MAY appear in a CoA-Request packet.

The Software46-Multicast Attribute MAY appear in an Accounting-Request packet.

The Software46-Multicast Attribute MUST NOT appear in any other RADIUS packet.

The Software46-Multicast Attribute MAY contain ASM-Prefix64 (see [Section 3.3.1](#)).

The Software46-Multicast Attribute MAY contain SSM-Prefix64 (see [Section 3.3.2](#)).

The Software46-Multicast Attribute MAY contain U-Prefix64 (see [Section 3.3.3](#)).

The Software46-Multicast Attribute MUST include ASM-Prefix64 or SSM-Prefix64, and it MAY include both.

The U-Prefix64 MUST be present when SSM-Prefix64 is present. U-Prefix64 MAY be present when ASM-Prefix64 is present.

The Software46-Multicast Attribute is structured as follows:



**Type**

241 (To be confirmed by IANA)

**Length**

This field indicates the total length in bytes of all fields of this attribute, including the Type, Length, Extended-Type, and the entire length of the embedded attributes.

**Extended-Type**

TBD6

**Value**

This field contains a set of attributes as follows:

**ASM-Prefix64**

This attribute contains the ASM IPv6 prefix. Refer to [Section 3.3.1](#).

**SSM-Prefix64**

This attribute contains the SSM IPv6 prefix. Refer to [Section 3.3.2](#).

**U-Prefix64**

This attribute contains the IPv4 prefix used for address translation. Refer to [Section 3.3.3](#).

The Software46-Multicast Attribute is associated with the following identifier: 241.Extended-Type(TBD6).

### **[3.3.1](#). ASM-Prefix64 Attribute**

The ASM-Prefix64 attribute is structured as follows:

**TLV-Type**

19

**TLV-Length**

16 octets. The length of ssm-prefix64 must be to 96 [[RFC8115](#)].

**Data Type**

The attribute ASM-Prefix64 is of type ipv6prefix ([Section 3.10 of \[RFC8044\]](#)).

**TLV-Value**

This field specifies the IPv6 multicast prefix (asm-prefix64) to be used to synthesize the IPv4-embedded IPv6 addresses of the multicast groups in the ASM mode. The conveyed multicast IPv6 prefix MUST belong to the ASM range.



### **3.3.2. SSM-Prefix64 Attribute**

The SSM-Prefix64 attribute is structured as follows:

Type  
20

TLV-Length  
16 octets. The length of ssm-prefix64 must be to 96 [[RFC8115](#)].

Data Type  
The attribute SSM-Prefix64 is of type ipv6prefix ([Section 3.10 of \[RFC8044\]](#)).

TLV-Type  
This field specifies the IPv6 multicast prefix (ssm-prefix64) to be used to synthesize the IPv4-embedded IPv6 addresses of the multicast groups in the SSM mode. The conveyed multicast IPv6 prefix MUST belong to the SSM range.

### **3.3.3. U-Prefix64 Attribute**

The structure of U-Prefix64 is shown below:

TLV-Type  
21

TLV-Length  
4 + length of unicast-prefix. As specified in [[RFC6052](#)], the unicast-prefix prefix-length MUST be set to 32, 40, 48, 56, 64, or 96.

Data Type  
The attribute U-Prefix64 is of type ipv6prefix ([Section 3.10 of \[RFC8044\]](#)).

TLV-Value  
This field identifies the IPv6 unicast prefix to be used in SSM mode for constructing the IPv4-embedded IPv6 addresses representing the IPv4 multicast sources in the IPv6 domain. It may also be used to extract the IPv4 address from the received multicast data flows.

## **4. A Sample Configuration Process with RADIUS**

Figure 2 illustrates how the RADIUS and DHCPv6 protocols interwork to provide CE with software configuration information.



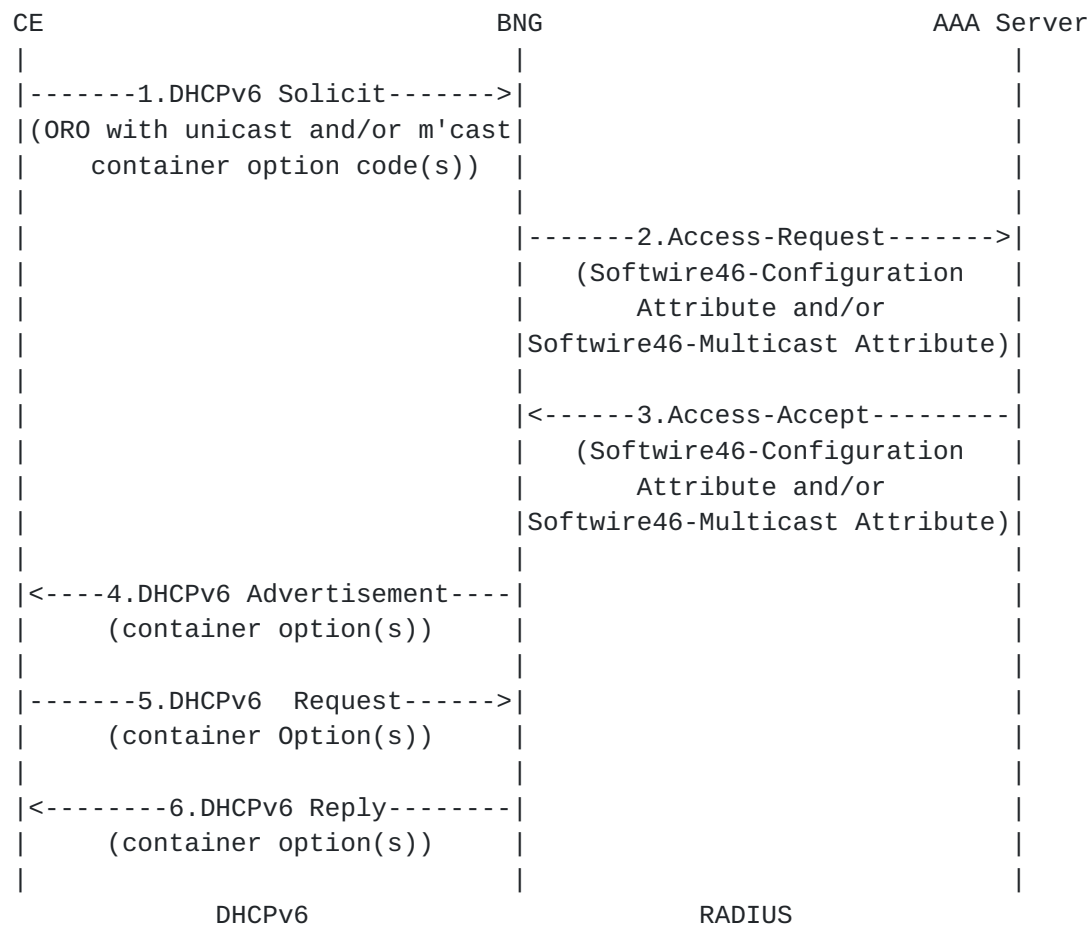


Figure 2: Interaction between DHCPv6 and AAA Server with RADIUS authentication

1. The CE creates a DHCPv6 Solicit message. For unicast softwire configuration, the message includes an `OPTION_REQUEST_OPTION` (6) with the Softwire46 Container option codes as defined in [\[RFC7598\]](#). `OPTION_S46_CONT_MAPE` (94) should be included for MAP-E, `OPTION_S46_CONT_MAPT` (95) for MAP-T, and `OPTION_S46_CONT_LW` (96) for Lightweight 4over6. For multicast configuration, the option number for `OPTION_V6_PREFIX64` (113) is included in the client's ORO. The message is sent to the BNG.
2. On receipt of the Solicit message, the BNG constructs a RADIUS Access-Request message containing a User-Name Attribute (1) (containing either a CE MAC address, interface-id or both), a User-Password Attribute (2) (with a pre-configured shared password as defined in [\[RFC2865\]](#)). The Softwire46-Configuration Attribute and/or Softwire46-Multicast Attribute are also included (as requested by the client). The resulting message is sent to the AAA server.





3. The AAA server authenticates the request. If this is successful, and suitable configuration is available, an Access-Accept message is sent to the BNG containing the requested Software46-Configuration Attribute or Software46-Multicast Attribute. It is the responsibility of the AAA server to ensure the consistency of the provided configuration.
4. The BNG maps the received software configuration into the corresponding fields in the DHCPv6 software configuration option(s). These are included in the DHCPv6 Advertise message which is sent to the CE.
5. The CE send a DHCPv6 Request message. In the ORO, the option code(s) of any of the required software options that were received in the Advertise message are included.
6. The BNG sends a Reply message to the client containing the software container options enumerated in the ORO.

The authorization operation could also be done independently, after the authentication process. In this case, steps 1-5 are completed as above, then the following steps are performed:

- 6a. When the BNG receives the DHCPv6 Request, it constructs a RADIUS Access-Request message, which contains a Service-Type Attribute (6) with the value "Authorize Only" (17), the corresponding Software46-Configuration Attribute, and a State Attribute obtained from the previous authentication process according to [\[RFC5080\]](#). The resulting message is sent to the AAA server.
- 7a. The AAA checks the authorization request. If it is approved, an Access-Accept message is returned to the BNG with the corresponding Software46-Configuration Attribute.
- 8a. The BNG sends a Reply message to the client containing the software container options enumerated in the ORO.

In addition to the above, the following points need to be considered:

- o In both the configuration message flows described above the Message-authenticator (type 80) [\[RFC2869\]](#) SHOULD be used to protect both Access-Request and Access-Accept messages.
- o If the BNG does not receive the corresponding Software46-Configuration Attribute in the Access-Accept message it MAY fallback to creating the DHCPv6 software configuration options using pre-configured Software46 configuration, if this is present.



- o If the BNG receives an Access-Reject from the AAA server, then Softwire46 configuration MUST NOT be supplied to the client.
- o As specified in [\[RFC8415\], Section 18.2.5](#), "Creation and Transmission of Rebind Messages", if the DHCPv6 server to which the DHCPv6 Renew message was sent at time T1 has not responded by time T2, the CE (DHCPv6 client) SHOULD enter the Rebind state and attempt to contact any available server. In this situation, a secondary BNG receiving the DHCPv6 message MUST initiate a new Access-Request message towards the AAA server. The secondary BNG includes the Softwire46-Configuration Attribute in this Access-Request message.
- o For Lightweight 4over6, the subscriber's binding state needs to be synchronized between the clients and the lwAFTR/BR. This can be achieved in two ways: static pre-configuring of the bindings on both the AAA server and lwAFTR, or on-demand whereby the AAA server updates the lwAFTR with the subscriber's binding state as it is created or deleted.

In some deployments, the DHCP server may use the Accounting-Request to report to a AAA server the softwire configuration returned to a requesting host. It is the responsibility of the DHCP server to ensure the consistency of the configuration provided to requesting hosts. Reported data to a AAA server may be required for various operational purposes (e.g., regulatory).

## 5. Table of Attributes

This document specifies three new RADIUS attributes, and their formats are as follows:

- o Softwire46-Configuration Attribute: 241.TBD1
- o Softwire46-Priority Attribute: 241.TBD5
- o Softwire46-Multicast Attribute: 241.TBD6

The following table describes which attributes may be found, in which kinds of packets and in what quantity.



Request	Accept	Reject	Challenge	Accounting	#	Attribute
				Request		
0-1	0-1	0	0	0-1	241.TBD1	Softwire46- Configuration
0-1	0-1	0	0	0-1	241.TBD5	Softwire46- Priority
0-1	0-1	0	0	0-1	241.TBD6	Softwire46- Multicast

## 6. Security Considerations

Known security vulnerabilities of the RADIUS protocol are discussed in [RFC2607], [RFC2865], and [RFC2869]. Use of IPsec [RFC4301] for providing security when RADIUS is carried in IPv6 is discussed in [RFC3162].

Specific security considerations for interactions between the MAP CE and the BNG are discussed in [RFC7597] and [RFC7599]. Security considerations for Lightweight 4over6 are discussed in [RFC7596]. Security considerations for DHCPv6-Based Softwire46 Prioritization Mechanism are discussed in [RFC8026]. Security considerations for multicast scenarios are discussed in [RFC8114]. Furthermore, generic DHCPv6 security mechanisms can be applied to DHCPv6 intercommunication between the CE and the BNG.

## 7. IANA Considerations

IANA is requested to make new code point assignments for RADIUS attributes as described in the following subsections.

### 7.1. New RADIUS Attributes

This document requests IANA to assign the Attribute Types defined in this document from the RADIUS namespace as described in the "IANA Considerations" section of [RFC3575], in accordance with BCP 26 [RFC8126].

This document requests that IANA register three new RADIUS attributes, from the "Short Extended Space" of [RFC6929]. The attributes are: Softwire46-Configuration Attribute, Softwire46-Priority Attribute, and Softwire46-Multicast Attribute:

Type	Description	Data Type	Reference
----	-----	-----	-----
241.TBD1	Softwire46-Configuration	tlv	<a href="#">Section 3.1</a>
241.TBD5	Softwire46-Priority	tlv	<a href="#">Section 3.2</a>
241.TBD6	Softwire46-Multicast	tlv	<a href="#">Section 3.3</a>



## 7.2. RADIUS Softwire46 Configuration and Multicast Attributes

IANA is requested to create a new registry called "RADIUS Softwire46 Configuration and Multicast Attributes".

All attributes in this registry have one or more parent RADIUS attributes in nesting (refer to [[RFC6929](#)]).

This registry must be initially populated with the following values:

Value	Description	Data Type	Reference
-----	-----	-----	-----
0	Reserved		
1	Softwire46-MAP-E	tlv	<a href="#">Section 3.1.1.1</a>
2	Softwire46-MAP-T	tlv	<a href="#">Section 3.1.1.2</a>
3	Softwire46-Lightweight-4over6	tlv	<a href="#">Section 3.1.1.3</a>
4	Softwire46-Rule	tlv	<a href="#">Section 3.1.3.1</a>
5	Softwire46-Rule	tlv	<a href="#">Section 3.1.3.1</a>
6	Softwire46-BR	ipv6addr	<a href="#">Section 3.1.3.2</a>
7	Softwire46-DMR	ipv6prefix	<a href="#">Section 3.1.3.3</a>
8	Softwire46-V4V6Bind	tlv	<a href="#">Section 3.1.3.4</a>
9	Softwire46-PORTPARAMS	tlv	<a href="#">Section 3.1.3.5</a>
10	Rule-IPv6-Prefix	ipv6prefix	<a href="#">Section 3.1.4.1</a>
11	Rule-IPv4-Prefix	ipv4prefix	<a href="#">Section 3.1.4.2</a>
12	EA-Length	integer	<a href="#">Section 3.1.4.3</a>
13	IPv4-address	ipv4addr	<a href="#">Section 3.1.5.1</a>
14	Bind-IPv6-Prefix	ipv6prefix	<a href="#">Section 3.1.5.2</a>
15	PSID-offset	integer	<a href="#">Section 3.1.6.1</a>
16	PSID-len	integer	<a href="#">Section 3.1.6.2</a>
17	PSID	integer	<a href="#">Section 3.1.6.3</a>
18	Softwire64-Option-Code	integer	<a href="#">Section 3.2.1</a>
19	ASM-Prefix64	ipv6prefix	<a href="#">Section 3.3.1</a>
20	SSM-Prefix64	ipv6prefix	<a href="#">Section 3.3.2</a>
21	U-Prefix64	ipv6prefix	<a href="#">Section 3.3.3</a>
22-255	Unassigned		

The registration procedure for this registry is Standards Action as defined in [[RFC8126](#)].

## 7.3. Softwire46 Mechanisms and Their Identifying Option Codes

The Softwire46-Priority Attribute defines a 16-bit Softwire46-option-code field, for which IANA is requested to create and maintain a new registry entitled "Option Codes Permitted in the Softwire46-Priority Attribute". The registration procedure for this registry is Standards Action as defined in [[RFC8126](#)].





This document requests IANA to register the three option codes of the Softwire46 mechanisms permitted to be included in the Softwire46-Priority Attribute. The value of option code corresponds to the TLV-Type defined in [Section 3.1.1](#). Additional options may be added to this list in the future using the IETF Review process described in [Section 4.8 of \[RFC8126\]](#).

Table 3 shows the option codes required, and the Softwire46 mechanisms that they represent. The option code for DS-Lite is derived from the IANA allocated RADIUS Attribute Type value for DS-Lite [[RFC6519](#)]. The option codes for MAP-E, MAP-T, and Lightweight 4over6 need to be assigned. The option codes for MAP-E, MAP-T, and Lightweight 4over6 should also be used as the TLV-Type values for the MAP-E, MAP-T, and Lightweight 4over6 attributes defined in [Section 3.1.1](#).

+-----+-----+-----+		
Option Code	Softwire46 Mechanism	Reference
+-----+-----+-----+		
TBD2	MAP-E	<a href="#">RFC7597</a>
TBD3	MAP-T	<a href="#">RFC7599</a>
TBD4	Lightweight 4over6	<a href="#">RFC7596</a>
144	DS-Lite	<a href="#">RFC6519</a>
+-----+-----+-----+		

Table 3: Option Codes to S46 Mechanisms

## [8. Contributing Authors](#)



Qiong Sun  
China Telecom  
Beijing China  
Email: sunqiong@ctbri.com.cn

Qi Sun  
Tsinghua University  
Department of Computer Science, Tsinghua University  
Beijing 100084  
P.R.China  
Phone: +86-10-6278-5822  
Email: sunqibupt@gmail.com

Cathy Zhou  
Huawei Technologies  
Bantian, Longgang District  
Shenzhen 518129  
Email: cathy.zhou@huawei.com

Tina Tsou  
Huawei Technologies(USA)  
2330 Central Expressway  
Santa Clara, CA 95050  
USA  
Email: Tina.Tsou.Zouting@huawei.com

ZiLong Liu  
Tsinghua University  
Beijing 100084  
P.R.China  
Phone: +86-10-6278-5822  
Email: liuzilong8266@126.com

Yong Cui  
Tsinghua University  
Beijing 100084  
P.R.China  
Phone: +86-10-62603059  
Email: yong@csnet1.cs.tsinghua.edu.cn

## **9. Acknowledgements**

The authors would like to thank the valuable comments made by Peter Lothberg, Wojciech Dec, Ian Farrer, Suresh Krishnan, Qian Wang, Wei Meng, Cui Wang, Alan Dekok, Stefan Winter, and Yu Tianpeng to this document.



This document was merged with [draft-sun-softwire-lw4over6-radext-01](#) and [draft-wang-radext-multicast-radius-ext-00](#), thanks to everyone who contributed to this document.

This document was produced using the xml2rfc tool [[RFC7991](#)].

## **[10.](#) References**

### **[10.1.](#) Normative References**

- [RFC2119] Bradner, S., "Key words for use in RFCs to Indicate Requirement Levels", [BCP 14](#), [RFC 2119](#), DOI 10.17487/RFC2119, March 1997, <<https://www.rfc-editor.org/info/rfc2119>>.
- [RFC2865] Rigney, C., Willens, S., Rubens, A., and W. Simpson, "Remote Authentication Dial In User Service (RADIUS)", [RFC 2865](#), DOI 10.17487/RFC2865, June 2000, <<https://www.rfc-editor.org/info/rfc2865>>.
- [RFC3162] Aboba, B., Zorn, G., and D. Mitton, "RADIUS and IPv6", [RFC 3162](#), DOI 10.17487/RFC3162, August 2001, <<https://www.rfc-editor.org/info/rfc3162>>.
- [RFC3575] Aboba, B., "IANA Considerations for RADIUS (Remote Authentication Dial In User Service)", [RFC 3575](#), DOI 10.17487/RFC3575, July 2003, <<https://www.rfc-editor.org/info/rfc3575>>.
- [RFC5080] Nelson, D. and A. DeKok, "Common Remote Authentication Dial In User Service (RADIUS) Implementation Issues and Suggested Fixes", [RFC 5080](#), DOI 10.17487/RFC5080, December 2007, <<https://www.rfc-editor.org/info/rfc5080>>.
- [RFC6052] Bao, C., Huitema, C., Bagnulo, M., Boucadair, M., and X. Li, "IPv6 Addressing of IPv4/IPv6 Translators", [RFC 6052](#), DOI 10.17487/RFC6052, October 2010, <<https://www.rfc-editor.org/info/rfc6052>>.
- [RFC6158] DeKok, A., Ed. and G. Weber, "RADIUS Design Guidelines", [BCP 158](#), [RFC 6158](#), DOI 10.17487/RFC6158, March 2011, <<https://www.rfc-editor.org/info/rfc6158>>.
- [RFC6929] DeKok, A. and A. Lior, "Remote Authentication Dial In User Service (RADIUS) Protocol Extensions", [RFC 6929](#), DOI 10.17487/RFC6929, April 2013, <<https://www.rfc-editor.org/info/rfc6929>>.



- [RFC8026] Boucadair, M. and I. Farrer, "Unified IPv4-in-IPv6 Software Customer Premises Equipment (CPE): A DHCPv6-Based Prioritization Mechanism", [RFC 8026](#), DOI 10.17487/RFC8026, November 2016, <<https://www.rfc-editor.org/info/rfc8026>>.
- [RFC8044] DeKok, A., "Data Types in RADIUS", [RFC 8044](#), DOI 10.17487/RFC8044, January 2017, <<https://www.rfc-editor.org/info/rfc8044>>.
- [RFC8114] Boucadair, M., Qin, C., Jacquenet, C., Lee, Y., and Q. Wang, "Delivery of IPv4 Multicast Services to IPv4 Clients over an IPv6 Multicast Network", [RFC 8114](#), DOI 10.17487/RFC8114, March 2017, <<https://www.rfc-editor.org/info/rfc8114>>.
- [RFC8115] Boucadair, M., Qin, J., Tsou, T., and X. Deng, "DHCPv6 Option for IPv4-Embedded Multicast and Unicast IPv6 Prefixes", [RFC 8115](#), DOI 10.17487/RFC8115, March 2017, <<https://www.rfc-editor.org/info/rfc8115>>.
- [RFC8126] Cotton, M., Leiba, B., and T. Narten, "Guidelines for Writing an IANA Considerations Section in RFCs", [BCP 26](#), [RFC 8126](#), DOI 10.17487/RFC8126, June 2017, <<https://www.rfc-editor.org/info/rfc8126>>.
- [RFC8174] Leiba, B., "Ambiguity of Uppercase vs Lowercase in [RFC 2119](#) Key Words", [BCP 14](#), [RFC 8174](#), DOI 10.17487/RFC8174, May 2017, <<https://www.rfc-editor.org/info/rfc8174>>.
- [RFC8415] Mrugalski, T., Siodelski, M., Volz, B., Yourtchenko, A., Richardson, M., Jiang, S., Lemon, T., and T. Winters, "Dynamic Host Configuration Protocol for IPv6 (DHCPv6)", [RFC 8415](#), DOI 10.17487/RFC8415, November 2018, <<https://www.rfc-editor.org/info/rfc8415>>.

## **10.2. Informative References**

- [RFC2607] Aboba, B. and J. Vollbrecht, "Proxy Chaining and Policy Implementation in Roaming", [RFC 2607](#), DOI 10.17487/RFC2607, June 1999, <<https://www.rfc-editor.org/info/rfc2607>>.
- [RFC2869] Rigney, C., Willats, W., and P. Calhoun, "RADIUS Extensions", [RFC 2869](#), DOI 10.17487/RFC2869, June 2000, <<https://www.rfc-editor.org/info/rfc2869>>.





- [RFC4301] Kent, S. and K. Seo, "Security Architecture for the Internet Protocol", [RFC 4301](#), DOI 10.17487/RFC4301, December 2005, <<https://www.rfc-editor.org/info/rfc4301>>.
- [RFC6333] Durand, A., Droms, R., Woodyatt, J., and Y. Lee, "Dual-Stack Lite Broadband Deployments Following IPv4 Exhaustion", [RFC 6333](#), DOI 10.17487/RFC6333, August 2011, <<https://www.rfc-editor.org/info/rfc6333>>.
- [RFC6346] Bush, R., Ed., "The Address plus Port (A+P) Approach to the IPv4 Address Shortage", [RFC 6346](#), DOI 10.17487/RFC6346, August 2011, <<https://www.rfc-editor.org/info/rfc6346>>.
- [RFC6519] Maglione, R. and A. Durand, "RADIUS Extensions for Dual-Stack Lite", [RFC 6519](#), DOI 10.17487/RFC6519, February 2012, <<https://www.rfc-editor.org/info/rfc6519>>.
- [RFC7596] Cui, Y., Sun, Q., Boucadair, M., Tsou, T., Lee, Y., and I. Farrer, "Lightweight 4over6: An Extension to the Dual-Stack Lite Architecture", [RFC 7596](#), DOI 10.17487/RFC7596, July 2015, <<https://www.rfc-editor.org/info/rfc7596>>.
- [RFC7597] Troan, O., Ed., Dec, W., Li, X., Bao, C., Matsushima, S., Murakami, T., and T. Taylor, Ed., "Mapping of Address and Port with Encapsulation (MAP-E)", [RFC 7597](#), DOI 10.17487/RFC7597, July 2015, <<https://www.rfc-editor.org/info/rfc7597>>.
- [RFC7598] Mrugalski, T., Troan, O., Farrer, I., Perreault, S., Dec, W., Bao, C., Yeh, L., and X. Deng, "DHCPv6 Options for Configuration of Software Address and Port-Mapped Clients", [RFC 7598](#), DOI 10.17487/RFC7598, July 2015, <<https://www.rfc-editor.org/info/rfc7598>>.
- [RFC7599] Li, X., Bao, C., Dec, W., Ed., Troan, O., Matsushima, S., and T. Murakami, "Mapping of Address and Port using Translation (MAP-T)", [RFC 7599](#), DOI 10.17487/RFC7599, July 2015, <<https://www.rfc-editor.org/info/rfc7599>>.
- [RFC7991] Hoffman, P., "The "xml2rfc" Version 3 Vocabulary", [RFC 7991](#), DOI 10.17487/RFC7991, December 2016, <<https://www.rfc-editor.org/info/rfc7991>>.



## [Appendix A.](#) DHCPv6 to RADIUS Field Mappings

The following sections detail the mappings between the software DHCPv6 option fields and the relevant RADIUS attributes as defined in this document.

### [A.1.](#) OPTION\_S46\_RULE (89) to Software46-Rule Sub-TLV Field Mappings

OPTION_S46_RULE Field	Software46-Rule Name	TLV Field
flags	N/A	TLV-type (TBD7, TBD8)
ea-len	EA-Length	EA-len
prefix4-len	Rule-IPv4-Prefix	ruleprefix4-len
ipv4-prefix	Rule-IPv4-Prefix	rule-ipv4-prefix
prefix6-len	Rule-IPv6-Prefix	ruleprefix6-len
ipv6-prefix	Rule-IPv6-Prefix	rule-ipv6-prefix

### [A.2.](#) OPTION\_S46\_BR (90) to Software46-BR Field Mappings

OPTION_S46_BR Field	Software46-BR Field
br-ipv6-address	br-ipv6-address

### [A.3.](#) OPTION\_S46\_DMR (91) to Software46-DMR

OPTION_S46_BR Field	Software46-DMR Field
dmr-prefix6-len	dmr-prefix6-len
dmr-ipv6-prefix	dmr-ipv6-prefix

### [A.4.](#) OPTION\_S46\_V4V6BIND (92) to Software46-V4V6Bind

OPTION_S46_V4V6BIND Field	Software46-V4V6Bind Name	TLV Field
ipv4-address	IPv4-address	ipv4-address
bindprefix6-len	Bind-IPv6-Prefix	bind6prefix-len
bind-ipv6-prefix	Bind-IPv6-Prefix	bind-ipv6-prefix



**A.5. OPTION\_S46\_PORTPARAMS (93) to Software46-PORTPARAMS Field Mappings**

OPTION_S46_PORTPARAMS Field	Software46-PORTPARAMS Name	TLV Field
offset	PSID-offset	PSID-Offset
PSID-len	PSID-len	PSID-len
PSID	PSID	PSID

**A.6. OPTION\_S46\_PRIORITY (111) to Software46-PORTPARAMS Field Mappings**

OPTION_S46_PRIORITY Field	Software46-Priority Attribute Field
s46-option-code	Software46-option-code

**A.7. OPTION\_V6\_PREFIX64 (113) to Software46-Multicast Attribute Field Mappings**

OPTION_V6_PREFIX64 Field	Software46-Multicast Attribute TLV Name	TLV Field
asm-length	ASM-Prefix64	Prefix-Length
ASM_mPrefix64	ASM-Prefix64	ASM Prefix64
ssm-length	SSM-Prefix64	Prefix-Length
SSM_mPrefix64	SSM-Prefix64	SSM Prefix64
unicast-length	U-Prefix64	Prefix-Length
uPrefix64	U-Prefix64	Unicast Prefix64

**Authors' Addresses**

Sheng Jiang  
Huawei Technologies Co., Ltd  
Q14, Huawei Campus, No.156 Beiqing Road  
Hai-Dian District, Beijing, 100095  
P.R. China

Email: jiangsheng@huawei.com



Yu Fu  
CNNIC  
No.4 South 4th Street, Zhongguancun  
Hai-Dian District, Beijing, 100190  
P.R. China

Email: eleven711711@foxmail.com

Bing Liu  
Huawei Technologies Co., Ltd  
Q14, Huawei Campus, No.156 Beiqing Road  
Hai-Dian District, Beijing, 100095  
P.R. China

Email: leo.liubing@huawei.com

Peter Deacon  
IEA Software, Inc.  
P.O. Box 1170  
Veradale, WA 99037  
USA

Email: peterd@iea-software.com

Chongfeng Xie  
China Telecom  
Beijing  
P.R. China

Email: xiechf.bri@chinatelecom.cn

Tianxiang Li  
Tsinghua University  
Beijing 100084  
P.R.China

Email: peter416733@gmail.com





Mohamed Boucadair (editor)  
Orange  
Rennes, 35000  
France

Email: mohamed.boucadair@orange.com