

Network Working Group
Internet-Draft

T. Creighton
Comcast Cable
G. Khandpur
Comcast Cable
August 2006

Expires: February 15, 2007

Use of DNS SRV and NAPTR Records for SPEERMINT
draft-ietf-speermint-srv-naptr-use-00.txt

Status of this Memo

By submitting this Internet-Draft, each author represents that any applicable patent or other IPR claims of which he or she is aware have been or will be disclosed, and any of which he or she becomes aware will be disclosed, in accordance with [Section 6 of BCP 79](#).

Internet-Drafts are working documents of the Internet Engineering Task Force (IETF), its areas, and its working groups. Note that other groups may also distribute working documents as Internet-Drafts.

Internet-Drafts are draft documents valid for a maximum of six months and may be updated, replaced, or obsoleted by other documents at any time. It is inappropriate to use Internet-Drafts as reference material or to cite them other than as "work in progress."

The list of current Internet-Drafts can be accessed at
<http://www.ietf.org/ietf/lid-abstracts.txt>

The list of Internet-Draft Shadow Directories can be accessed at
<http://www.ietf.org/shadow.html>.

This Internet-Draft will expire on February 15, 2007.

Copyright Notice

Copyright (C) The Internet Society (2006).

Abstract

The objective of this document is to specify the Best Current Practice (BCP) adopted by a Voice Over IP (VoIP) service provider in order to locate another VoIP service provider to peer with in the context of Session PEERING for Multimedia INTERconnect.

Table of Contents

1.	Introduction.....	2
2.	Terminology.....	2
3.	Session Peering Setup.....	3
3.1	TARGET Determination.....	5
3.2	NAPTR Lookup.....	5
3.3	SRV Lookup.....	5
3.4	Using SRV Results.....	6
4.	High Availability.....	6
4.1	SPP1 Fails to Reach SPP2.....	6
4.2	SPP2 Fails to Reach SPP1.....	6
5.	Caching/TTL.....	7
6.	Acknowledgements.....	7
7.	Security Considerations.....	7
8.	IANA Considerations.....	7
9.	References.....	7
9.1	Normative References.....	7
9.2	Informative References.....	8
	Authors' Addresses.....	8
	Intellectual Property and Copyright Statements.....	8

[1.](#) Introduction

A service provider needs to identify the ingress Session Initiation Protocol (SIP) ([RFC 3261](#) [[1](#)]) server of a peering network before it can signal and route SIP based real-time communication sessions. This function of locating the ingress SIP server of peering network is typically performed by the egress SIP server of the service provider originating the SIP session. Also, the ingress server in the peering network needs to locate the originating service provider's egress server in situations where the peering connection to it gets terminated after receiving the SIP requests or if the egress SIP server of originating service provider fails. The SIP servers at originating and peering side use the DNS procedures, using both SRV [[2](#)] and NAPTR [[3](#)] records, in order to locate each other.

[2.](#) Terminology

In this document, the key words "MUST", "MUST NOT", "REQUIRED",

.....

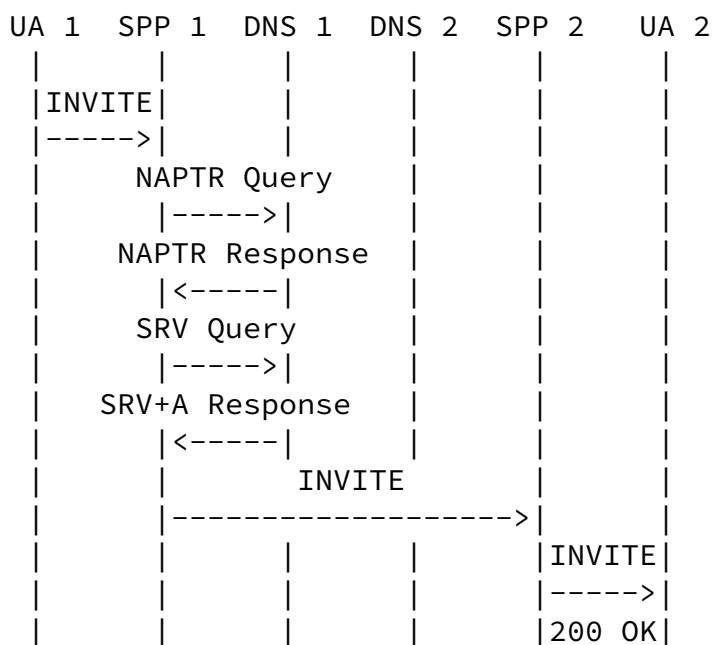
.....

Figure 1: Logical Peering Scenario

In order to route the call to this resource in SP2, SPP1 needs to determine the ingress SIP Session Peering Proxy for SP2, called SPP2, by resolving the SIP or SIPS URI in DNS. SPP1 makes use of the NAPTR and DNS SRV mechanism defined in [5] to determine the IP address, port, and transport protocol for peering with the SP2 ingress SIP peering proxy server (i.e. SPP2). SPP1 and SPP2 which are involved in the session peering, support a set of protocols and have list of preferences for these protocols. UDP, TCP and TLS MUST be supported by these proxies.

As a best practice, SPP1 and SPP2 SHOULD be deployed in a highly scalable and highly available manner, such as a cluster of servers. These servers are of different prioritization and weight, to ensure capacity-based load balancing.

The figure below shows a high level SIP call flow setting up a SIP peering session between SP1 and SP2. All SIP signaling MUST go through the SPP1 and SPP2 as these are the ingress and egress points in SP1 and SP2 network.



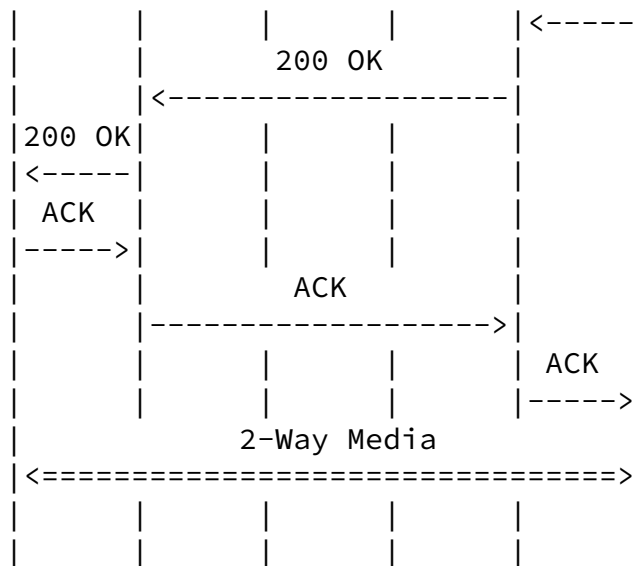


Figure 2: Example Call Flow

[DO WE NEED THIS CALL FLOW]

The target, to which the request is sent, is determined by SPP1 as follows:

[3.1](#) TARGET Determination

The target resource is identified with a SIP or SIPS URI. This is the URI in the Route header, if present, or the URI from the request URI of the SIP INVITE received by SPP1.

The host value of the hostport component of the URI is the TARGET. This TARGET is the domain to be contacted.

[3.2](#) NAPTR Lookup

Next the SPP1 determines the transport protocol of the TARGET by performing a NAPTR query for the TARGET. NAPTR processing as described in [3] will result in the discovery of the most preferred transport protocol of a server instance of SPP2 and SRV records.

For example, consider a client that wishes to resolve sip:user@example.com performs a NAPTR query for that TARGET domain example.com, and the following NAPTR records are returned:

```

;           order pref flags service      regexp replacement
IN NAPTR 50  50  "s"  "SIPS+D2T"  ""      _sips._tcp.example.com
IN NAPTR 90  50  "s"  "SIP+D2T"   ""      _sip._tcp.example.com
IN NAPTR 100 50  "s"  "SIP+D2U"   ""      _sip._udp.example.com

```

DNS MUST return at least three records - one with "SIP+D2T", one with "SIP+D2U" and one with "SIPS+D2T" service type for the case of direct peering (section 4.3 in [6]). "SIPS+D2T" is not a MUST for indirect (transit) peering (section 4.4 in [6]) since domain validation as specified in section 26.3.2.2 of [1] for TLS at layer 5 will not work for indirect peering.

3.3 SRV Lookup

Depending on what transport protocols SPP1 supports, SPP1 selects one from the preference list of NAPTR results and performs the SRV lookup to obtain a list of available server instances for SPP2. TLS SHOULD be the preferred transport protocol for peering between SPP1 and SPP2.

In our example SPP1 uses TCP, the SRV lookup for `_sip._tcp.example.com` would return list of available servers :

```

;;           Priority Weight Port  Target
IN SRV  0      1      5060  server1.example.com
IN SRV  0      2      5060  server2.example.com

```

Alternatively, if no NAPTR records are found, then SPP1 uses the preferred transport protocol and issues an SRV query for that specific transport using `sips` for SIPS URI and `SIP` URI with TLS and `sip` for SIP URI.

In our example, SPP1 prefers to use TCP and target SIP URI of SP2 is `sip:user@example.com`, it sends a SRV query for `_sip._tcp.example.com`.

3.4 Using SRV Results

[RFC 2782](#) describes the procedures on how to use and interpret the results obtained from the SRV query. The target entry of the SRV RRs

is looked up by querying the DNS for address records. The SRV response from DNS MAY also include A records with it which will cut down on round trips and lookup of DNS again for target entry. On determining the transport protocol, service, port and address record from the SRV RRs as described above, the SPP1 will try to connect to the (protocol, address, service). Once the connection is established to an available instance of SPP2, SPP1 sends the SIP INVITE to SPP2. SPP1 MUST act in a stateful manner and any retransmission of SIP requests for a specific SIP transaction, including ACKS for non-2xx response or CANCEL for that SIP transaction MUST go to the same server instance of SPP2.

When SPP1 sends the SIP INVITE to SPP2, it SHOULD set the sent-by parameter of the topmost Via header in the SIP INVITE to a domain that identifies SPP1. It MUST not specify the port.

[4. High Availability](#)

High Availability is ensured by detecting failures in the ability to connect to SPP1 and SPP2 server instances. In the event of a failure, when SPP1 tries to send SIP INVITE to SPP2, the following failures could occur:

[4.1 SPP1 Fails to Reach SPP2](#)

A 503 error response is reported by the transaction layer, or failure can occur at the transport layer due to TCP disconnect in connection, ICMP error in UDP or time out at transport layer or SIP layer timeout when its not receiving any SIP response. In such situations, SPP1 tries a new SIP request transaction to the next available server instance of SPP2 as determined by SRV RRs entry.

[4.2 SPP2 Fails to Reach SPP1](#)

Failure may also occur after the request is received by SPP2 from SPP1 due to closure of the transport connection the request came in on at SPP2, before the response can be sent back to SPP1. In this situation, SPP2 uses the domain value present in the 'sent-by'

parameter in the top most Via header of the received SIP INVITE, and queries for SRV records at this domain name using the service identifier "_sips" if the Via transport is "TLS", "_sip" otherwise.

The sorted list of SRV RRs are obtained and used as described in [2] to send the response back to SPP1. If the topmost element in the list of server instances of SPP1 fails, the next available one is tried.

[SHOULD WE ADD CALL FLOW FOR FAILURE SCENARIO DESCRIBED IN 4.1 AND 4.2]

5. Caching/TTL

SRV RRs have a TTL value based on which the SPP1 caches the entry for that duration and any further requests to the same TARGET domain are delivered to the cached server instance. The TTL recommended for SRV is about 1 hr. The TTL for NAPTR is much higher, about 1 day (24hrs) since the NAPTR records do not vary that often.

6. Acknowledgements

Special thanks go to Jason Livingood and Yiu Lee for their valuable input to this document.

7. Security Considerations

This document introduces no new security considerations.

8. IANA Considerations

This document creates no new requirements on IANA namespaces [[RFC2434](#)].

9. References

9.1 Normative References

- [1] Rosenberg, J., Schulzrinne, H., Camarillo, G., Johnston, A., Peterson, J., Sparks, R., Handley, M. and E. Schooler, "SIP: Session Initiation Protocol", [RFC 3261](#), June 2002.
- [2] Gulbrandsen, A., Vixie, P. and L. Esibov, "A DNS RR for

Specifying the Location of Services (DNS SRV)", [RFC 2782](#), February 2000.

- [3] Mealling, M. and R. Daniel, "The Naming Authority Pointer (NAPTR) DNS Resource Record", [RFC 2915](#), September 2000.
- [4] Faltstrom, P. and M. Mealling, "The E.164 to Uniform Resource Identifiers (URI) Dynamic Delegation Discovery System (DDDS) Application (ENUM)", [RFC 3761](#), April 2004.
- [5] Rosenberg, J., Schulzrinne, H., "Session Initiation Protocol (SIP): Locating SIP Servers", [RFC 3263](#), June 2002.
- [6] Meyer, D., "SPEERMINT Terminology", [draft-ietf-speermint-terminology-03](#), August 2006.

[9.2](#) Informative References

- [RFC2434] Narten, T. and H. Alvestrand, "Guidelines for Writing an IANA Considerations Section in RFCs", [BCP 26](#), [RFC 2434](#), October 1998.

Authors' Addresses

Tom Creighton
Comcast Cable Communications
1500 Market Street
Philadelphia, PA 19102
USA

Phone: +1-215-320-8617
Email: tom_creighton@cable.comcast.com

Gaurav Khandpur
Comcast Cable Communications
1500 Market Street
Philadelphia, PA 19102
USA

Phone: +1-215-320-5918
Email: gaurav_khandpur@cable.comcast.com

Intellectual Property and Copyright Statements

Intellectual Property Statement

The IETF takes no position regarding the validity or scope of any Intellectual Property Rights or other rights that might be claimed to pertain to the implementation or use of the technology described in this document or the extent to which any license under such rights might or might not be available; nor does it represent that it has made any independent effort to identify any such rights. Information on the procedures with respect to rights in RFC documents can be found in [BCP 78](#) and [BCP 79](#).

Copies of IPR disclosures made to the IETF Secretariat and any assurances of licenses to be made available, or the result of an attempt made to obtain a general license or permission for the use of such proprietary rights by implementers or users of this specification can be obtained from the IETF on-line IPR repository at <http://www.ietf.org/ipr>.

The IETF invites any interested party to bring to its attention any copyrights, patents or patent applications, or other proprietary rights that may cover technology that may be required to implement this standard. Please address the information to the IETF at ietf-ipr@ietf.org.

Disclaimer of Validity

This document and the information contained herein are provided on an "AS IS" basis and THE CONTRIBUTOR, THE ORGANIZATION HE/SHE REPRESENTS OR IS SPONSORED BY (IF ANY), THE INTERNET SOCIETY AND THE INTERNET ENGINEERING TASK FORCE DISCLAIM ALL WARRANTIES, EXPRESS OR IMPLIED, INCLUDING BUT NOT LIMITED TO ANY WARRANTY THAT THE USE OF THE INFORMATION HEREIN WILL NOT INFRINGE ANY RIGHTS OR ANY IMPLIED WARRANTIES OF MERCHANTABILITY OR FITNESS FOR A PARTICULAR PURPOSE.

Copyright Statement

Copyright (C) The Internet Society (2006). This document is subject to the rights, licenses and restrictions contained in [BCP 78](#), and except as set forth therein, the authors retain all their rights.

Acknowledgment

Funding for the RFC Editor function is currently provided by the Internet Society.