



## Copyright Notice

Copyright (c) 2023 IETF Trust and the persons identified as the document authors. All rights reserved.

This document is subject to BCP 78 and the IETF Trust's Legal Provisions Relating to IETF Documents (<https://trustee.ietf.org/license-info>) in effect on the date of publication of this document. Please review these documents carefully, as they describe your rights and restrictions with respect to this document. Code Components extracted from this document must include Revised BSD License text as described in Section 4.e of the Trust Legal Provisions and are provided without warranty as described in the Revised BSD License.

## Table of Contents

- [1. Introduction](#)
  - [1.1. Requirements Notation](#)
  - [1.2. Notation](#)
- [2. Cryptographic Dependencies](#)
  - [2.1. Oblivious Pseudorandom Function](#)
  - [2.2. Key Derivation Function and Message Authentication Code](#)
  - [2.3. Hash Functions](#)
- [3. Protocol Overview](#)
  - [3.1. Setup](#)
  - [3.2. Offline Registration](#)
  - [3.3. Online Authenticated Key Exchange](#)
- [4. Client Credential Storage and Key Recovery](#)
  - [4.1. Key Recovery](#)
    - [4.1.1. Envelope Structure](#)
    - [4.1.2. Envelope Creation](#)
    - [4.1.3. Envelope Recovery](#)
- [5. Offline Registration](#)
  - [5.1. Registration Messages](#)
  - [5.2. Registration Functions](#)
    - [5.2.1. CreateRegistrationRequest](#)
    - [5.2.2. CreateRegistrationResponse](#)
    - [5.2.3. FinalizeRegistrationRequest](#)
- [6. Online Authenticated Key Exchange](#)
  - [6.1. AKE Messages](#)
  - [6.2. AKE Functions](#)
    - [6.2.1. GenerateKE1](#)
    - [6.2.2. GenerateKE2](#)
    - [6.2.3. GenerateKE3](#)
    - [6.2.4. ServerFinish](#)
  - [6.3. Credential Retrieval](#)
    - [6.3.1. Credential Retrieval Messages](#)
    - [6.3.2. Credential Retrieval Functions](#)

- [6.4. 3DH Protocol](#)
  - [6.4.1. 3DH Key Exchange Functions](#)
  - [6.4.2. Key Schedule Functions](#)
  - [6.4.3. 3DH Client Functions](#)
  - [6.4.4. 3DH Server Functions](#)
- [7. Configurations](#)
- [8. Application Considerations](#)
- [9. Implementation Considerations](#)
  - [9.1. Implementation Safeguards](#)
  - [9.2. Error Considerations](#)
- [10. Security Considerations](#)
  - [10.1. Notable Design Differences](#)
  - [10.2. Security Analysis](#)
  - [10.3. Related Protocols](#)
  - [10.4. Identities](#)
  - [10.5. Export Key Usage](#)
  - [10.6. Static Diffie-Hellman Oracles](#)
  - [10.7. Input Validation](#)
  - [10.8. OPRF Key Stretching](#)
  - [10.9. Client Enumeration](#)
  - [10.10. Protecting the Registration Masking Key](#)
  - [10.11. Password Salt and Storage Implications](#)
  - [10.12. AKE Private Key Storage](#)
- [11. IANA Considerations](#)
- [12. References](#)
  - [12.1. Normative References](#)
  - [12.2. Informative References](#)
- [Appendix A. Acknowledgments](#)
- [Appendix B. Alternate Key Recovery Mechanisms](#)
- [Appendix C. Alternate AKE Instantiations](#)
  - [C.1. HMQV Instantiation Sketch](#)
  - [C.2. SIGMA-I Instantiation Sketch](#)
- [Appendix D. Test Vectors](#)
  - [D.1. Real Test Vectors](#)
    - [D.1.1. OPAQUE-3DH Real Test Vector 1](#)
    - [D.1.2. OPAQUE-3DH Real Test Vector 2](#)
    - [D.1.3. OPAQUE-3DH Real Test Vector 3](#)
    - [D.1.4. OPAQUE-3DH Real Test Vector 4](#)
    - [D.1.5. OPAQUE-3DH Real Test Vector 5](#)
    - [D.1.6. OPAQUE-3DH Real Test Vector 6](#)
  - [D.2. Fake Test Vectors](#)
    - [D.2.1. OPAQUE-3DH Fake Test Vector 1](#)
    - [D.2.2. OPAQUE-3DH Fake Test Vector 2](#)
    - [D.2.3. OPAQUE-3DH Fake Test Vector 3](#)
- [Authors' Addresses](#)

## 1. Introduction

Password authentication is ubiquitous in many applications. In a common implementation, a client authenticates to a server by sending its client ID and password to the server over a secure connection. This makes the password vulnerable to server mishandling, including accidentally logging the password or storing it in plaintext in a database. Server compromise resulting in access to these plaintext passwords is not an uncommon security incident, even among security-conscious organizations. Moreover, plaintext password authentication over secure channels such as TLS is also vulnerable to cases where TLS may fail, including PKI attacks, certificate mishandling, termination outside the security perimeter, visibility to TLS-terminating intermediaries, and more.

Asymmetric (or Augmented) Password Authenticated Key Exchange (aPAKE) protocols are designed to provide password authentication and mutually authenticated key exchange in a client-server setting without relying on PKI (except during client registration) and without disclosing passwords to servers or other entities other than the client machine. A secure aPAKE should provide the best possible security for a password protocol. Indeed, some attacks are inevitable, such as online impersonation attempts with guessed client passwords and offline dictionary attacks upon the compromise of a server and leakage of its credential file. In the latter case, the attacker learns a mapping of a client's password under a one-way function and uses such a mapping to validate potential guesses for the password. Crucially important is for the password protocol to use an unpredictable one-way mapping. Otherwise, the attacker can pre-compute a deterministic list of mapped passwords leading to almost instantaneous leakage of passwords upon server compromise.

This document describes OPAQUE, a PKI-free secure aPAKE that is secure against pre-computation attacks. OPAQUE provides forward secrecy with respect to password leakage while also hiding the password from the server, even during password registration. OPAQUE allows applications to increase the difficulty of offline dictionary attacks via iterated hashing or other key stretching schemes. OPAQUE is also extensible, allowing clients to safely store and retrieve arbitrary application data on servers using only their password.

OPAQUE is defined and proven as the composition of three functionalities: an oblivious pseudorandom function (OPRF), a key recovery mechanism, and an authenticated key exchange (AKE) protocol. It can be seen as a "compiler" for transforming any suitable AKE protocol into a secure aPAKE protocol. (See [Section 10](#) for requirements of the OPRF and AKE protocols.) This document specifies one OPAQUE instantiation based on [[\\_3DH](#)]. Other instantiations are possible, as discussed in [Appendix C](#), but their

details are out of scope for this document. In general, the modularity of OPAQUE's design makes it easy to integrate with additional AKE protocols, e.g., TLS or HMQV, and with future ones such as those based on post-quantum techniques.

OPAQUE consists of two stages: registration and authenticated key exchange. In the first stage, a client registers its password with the server and stores information used to recover authentication credentials on the server. Recovering these credentials can only be done with knowledge of the client password. In the second stage, a client uses its password to recover those credentials and subsequently uses them as input to an AKE protocol. This stage has additional mechanisms to prevent an active attacker from interacting with the server to guess or confirm clients registered via the first phase. Servers can use this mechanism to safeguard registered clients against this type of enumeration attack; see [Section 10.9](#) for more discussion.

The name OPAQUE is a homonym of O-PAKE where O is for Oblivious. The name OPAKE was taken.

This draft complies with the requirements for PAKE protocols set forth in [[RFC8125](#)].

### 1.1. Requirements Notation

The key words "MUST", "MUST NOT", "REQUIRED", "SHALL", "SHALL NOT", "SHOULD", "SHOULD NOT", "RECOMMENDED", "NOT RECOMMENDED", "MAY", and "OPTIONAL" in this document are to be interpreted as described in BCP 14 [[RFC2119](#)] [[RFC8174](#)] when, and only when, they appear in all capitals, as shown here.

### 1.2. Notation

The following functions are used throughout this document:

\*I2OSP and OS2IP: Convert a byte string to and from a non-negative integer as described in Section 4 of [[RFC8017](#)]. Note that these functions operate on byte strings in big-endian byte order.

\*concat(x0, ..., xN): Concatenate byte strings. For example, concat(0x01, 0x0203, 0x040506) = 0x010203040506.

\*random(n): Generate a cryptographically secure pseudorandom byte string of length n bytes.

\*zeroes(n): Generate a string of n bytes all equal to 0 (zero).

\*xor(a,b): Apply XOR to byte strings. For example, xor(0xF0F0, 0x1234) = 0xE2C4. It is an error to call this function with arguments of unequal length.

\*ct\_equal(a, b): Return true if a is equal to b, and false otherwise. The implementation of this function must be constant-time in the length of a and b, which are assumed to be of equal length, irrespective of the values a or b.

Except if said otherwise, random choices in this specification refer to drawing with uniform distribution from a given set (i.e., "random" is short for "uniformly random"). Random choices can be replaced with fresh outputs from a cryptographically strong pseudorandom generator, according to the requirements in [RFC4086], or pseudorandom function. For convenience, we define nil as a lack of value.

All protocol messages and structures defined in this document use the syntax from [RFC8446], [Section 3](#).

## 2. Cryptographic Dependencies

OPAQUE depends on the following cryptographic protocols and primitives:

\*Oblivious Pseudorandom Function (OPRF); [Section 2.1](#)

\*Key Derivation Function (KDF); [Section 2.2](#)

\*Message Authentication Code (MAC); [Section 2.2](#)

\*Cryptographic Hash Function; [Section 2.3](#)

\*Key Stretching Function (KSF); [Section 2.3](#)

This section describes these protocols and primitives in more detail. Unless said otherwise, all random nonces and seeds used in these dependencies and the rest of the OPAQUE protocol are of length  $N_n$  and  $N_{seed}$  bytes, respectively, where  $N_n = N_{seed} = 32$ .

### 2.1. Oblivious Pseudorandom Function

An Oblivious Pseudorandom Function (OPRF) is a two-party protocol between client and server for computing a PRF such that the client learns the PRF output and neither party learns the input of the other. This specification depends on the prime-order OPRF construction specified in [OPRF], draft version -21, using the OPRF mode (0x00) from [OPRF], [Section 3.1](#).

The following OPRF client APIs are used:

- \*Blind(element): Create and output (blind, blinded\_element), consisting of a blinded representation of input element, denoted blinded\_element, along with a value to revert the blinding process, denoted blind.
- \*Finalize(element, blind, evaluated\_element): Finalize the OPRF evaluation using input element, random inverter blind, and evaluation output evaluated\_element, yielding output oprf\_output.

Moreover, the following OPRF server APIs are used:

- \*BlindEvaluate(k, blinded\_element): Evaluate blinded input element blinded\_element using input key k, yielding output element evaluated\_element. This is equivalent to the BlindEvaluate function described in [OPRF], [Section 3.3.1](#), where k is the private key parameter.
- \*DeriveKeyPair(seed, info): Derive a private and public key pair deterministically from a seed and info parameter, as described in [OPRF], [Section 3.2](#).

Finally, this specification makes use of the following shared APIs and parameters:

- \*SerializeElement(element): Map input element to a fixed-length byte array buf.
- \*DeserializeElement(buf): Attempt to map input byte array buf to an OPRF group element. This function can raise a DeserializeError upon failure; see [OPRF], [Section 2.1](#) for more details.
- \*Noe: The size of a serialized OPRF group element output from SerializeElement.
- \*Nok: The size of an OPRF private key as output from DeriveKeyPair.

## 2.2. Key Derivation Function and Message Authentication Code

A Key Derivation Function (KDF) is a function that takes some source of initial keying material and uses it to derive one or more cryptographically strong keys. This specification uses a KDF with the following API and parameters:

- \*Extract(salt, ikm): Extract a pseudorandom key of fixed length  $N_x$  bytes from input keying material ikm and an optional byte string salt.

\*Expand(prk, info, L): Expand a pseudorandom key prk using the optional string info into L bytes of output keying material.

\*Nx: The output size of the Extract() function in bytes.

This specification also makes use of a collision-resistant Message Authentication Code (MAC) with the following API and parameters:

\*MAC(key, msg): Compute a message authentication code over input msg with key key, producing a fixed-length output of Nm bytes.

\*Nm: The output size of the MAC() function in bytes.

### 2.3. Hash Functions

This specification makes use of a collision-resistant hash function with the following API and parameters:

\*Hash(msg): Apply a cryptographic hash function to input msg, producing a fixed-length digest of size Nh bytes.

\*Nh: The output size of the Hash() function in bytes.

This specification makes use of a Key Stretching Function (KSF), which is a slow and expensive cryptographic hash function with the following API:

\*Stretch(msg): Apply a key stretching function to stretch the input msg and harden it against offline dictionary attacks. This function also needs to satisfy collision resistance.

## 3. Protocol Overview

OPAQUE consists of two stages: registration and authenticated key exchange. In the first stage, a client registers its password with the server and stores its credential file on the server. In the second stage (also called the "login" stage), the client recovers its authentication material and uses it to perform a mutually authenticated key exchange.

### 3.1. Setup

Prior to both stages, the client and server agree on a configuration that fully specifies the cryptographic algorithm dependencies necessary to run the protocol; see [Section 7](#) for details. The server chooses a pair of keys (server\_private\_key and server\_public\_key) for the AKE, and chooses a seed (opr\_seed) of Nh bytes for the OPRF. The server can use this single pair of keys with multiple clients and can opt to use multiple seeds (so long as they are kept consistent for each client).



### 3.2. Offline Registration

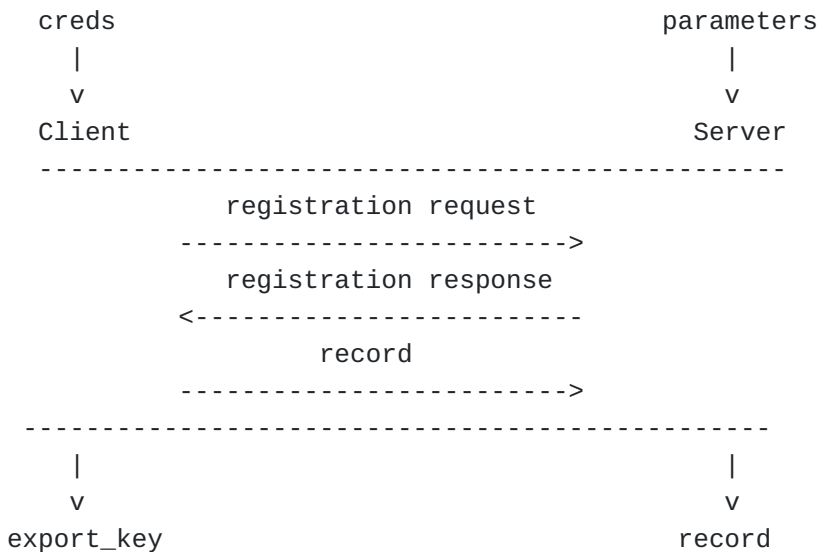
Registration is the only stage in OPAQUE that requires a server-authenticated channel with confidentiality and integrity: either physical, out-of-band, PKI-based, etc.

The client inputs its credentials, which include its password and user identifier, and the server inputs its parameters, which include its private key and other information.

The client output of this stage is a single value `export_key` that the client may use for application-specific purposes, e.g., to encrypt additional information for storage on the server. The server does not have access to this `export_key`.

The server output of this stage is a record corresponding to the client's registration that it stores in a credential file alongside other clients registrations as needed.

The registration flow is shown below:



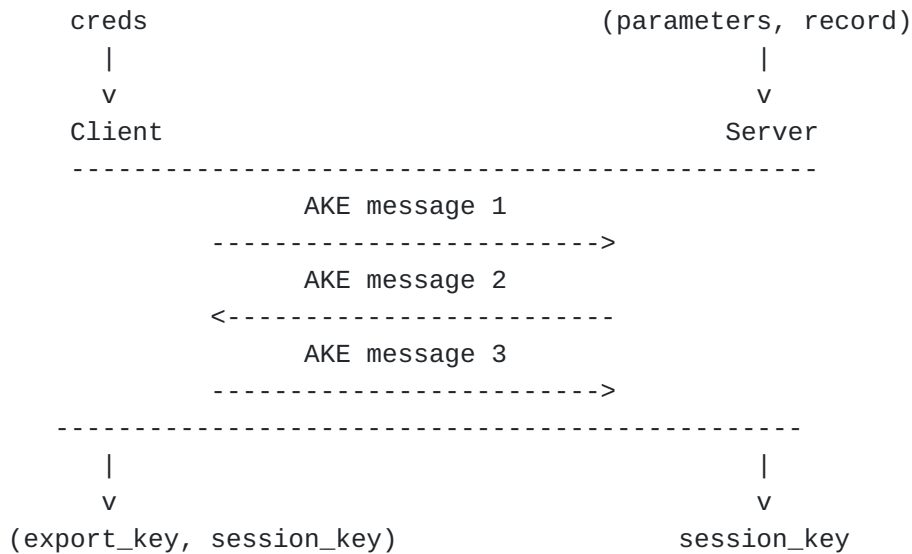
These messages are named `RegistrationRequest`, `RegistrationResponse`, and `RegistrationRecord`, respectively. Their contents and wire format are defined in [Section 5.1](#).

### 3.3. Online Authenticated Key Exchange

In this second stage, a client obtains credentials previously registered with the server, recovers private key material using the password, and subsequently uses them as input to the AKE protocol. As in the registration phase, the client inputs its credentials, including its password and user identifier, and the server inputs its parameters and the credential file record corresponding to the client. The client outputs two values, an `export_key` (matching that

from registration) and a `session_key`, the latter of which is the primary AKE output. The server outputs a single value `session_key` that matches that of the client. Upon completion, clients and servers can use these values as needed.

The authenticated key exchange flow is shown below:



These messages are named KE1, KE2, and KE3, respectively. They carry the messages of the concurrent execution of the key recovery process (OPRF) and the authenticated key exchange (AKE), and their corresponding wire formats are specified in [Section 6.1](#).

The rest of this document describes the details of these stages in detail. [Section 4](#) describes how client credential information is generated, encoded, and stored on the server during registration, and recovered during login. [Section 5](#) describes the first registration stage of the protocol, and [Section 6](#) describes the second authentication stage of the protocol. [Section 7](#) describes how to instantiate OPAQUE using different cryptographic dependencies and parameters.

#### 4. Client Credential Storage and Key Recovery

OPAQUE makes use of a structure called Envelope to manage client credentials. The client creates its Envelope on registration and sends it to the server for storage. On every login, the server sends this Envelope to the client so it can recover its key material for use in the AKE.

Future variants of OPAQUE may use different key recovery mechanisms. See [Section 4.1](#) for details.

Applications may pin key material to identities if desired. If no identity is given for a party, its value MUST default to its public

key. The following types of application credential information are considered:

\*client\_private\_key: The encoded client private key for the AKE protocol.

\*client\_public\_key: The encoded client public key for the AKE protocol.

\*server\_public\_key: The encoded server public key for the AKE protocol.

\*client\_identity: The client identity. This is an application-specific value, e.g., an e-mail address or an account name. If not specified, it defaults to the client's public key.

\*server\_identity: The server identity. This is typically a domain name, e.g., example.com. If not specified, it defaults to the server's public key. See [Section 10.4](#) for information about this identity.

These credential values are used in the `CleartextCredentials` structure as follows:

```
struct {
    uint8 server_public_key[Npk];
    uint8 server_identity<1..2^16-1>;
    uint8 client_identity<1..2^16-1>;
} CleartextCredentials;
```

The function `CreateCleartextCredentials` constructs a `CleartextCredentials` structure given application credential information.

## CreateCleartextCredentials

### Input:

- `server_public_key`, the encoded server public key for the AKE protocol.
- `client_public_key`, the encoded client public key for the AKE protocol.
- `server_identity`, the optional encoded server identity.
- `client_identity`, the optional encoded client identity.

### Output:

- `cleartext_credentials`, a `CleartextCredentials` structure.

```
def CreateCleartextCredentials(server_public_key, client_public_key,
                              server_identity, client_identity):
    # Set identities as public keys if no application-layer identity is pr
    if server_identity == nil
        server_identity = server_public_key
    if client_identity == nil
        client_identity = client_public_key

    Create CleartextCredentials cleartext_credentials with
        (server_public_key, server_identity, client_identity)
    return cleartext_credentials
```

### 4.1. Key Recovery

This specification defines a key recovery mechanism that uses the stretched OPRF output as a seed to directly derive the private and public keys using the `DeriveDiffieHellmanKeyPair()` function defined in [Section 6.4.1](#).

#### 4.1.1. Envelope Structure

The key recovery mechanism defines its Envelope as follows:

```
struct {
    uint8 nonce[Nn];
    uint8 auth_tag[Nm];
} Envelope;
```

`nonce`: A unique nonce of length `Nn`, used to protect this Envelope.

`auth_tag`: An authentication tag protecting the contents of the envelope, covering the envelope nonce and `CleartextCredentials`.

#### 4.1.2. Envelope Creation

Clients create an Envelope at registration with the function `Store` defined below. Note that `DeriveDiffieHellmanKeyPair` in this function can fail with negligible probability. If this occurs, servers should re-run the function, sampling a new `envelope_nonce`, to completion.

Store

Input:

- randomized\_password, a randomized password.
- server\_public\_key, the encoded server public key for the AKE protocol.
- server\_identity, the optional encoded server identity.
- client\_identity, the optional encoded client identity.

Output:

- envelope, the client's Envelope structure.
- client\_public\_key, the client's AKE public key.
- masking\_key, an encryption key used by the server with the sole purpose of defending against client enumeration attacks.
- export\_key, an additional client key.

```
def Store(randomized_password, server_public_key, server_identity, client_identity):
    envelope_nonce = random(Nn)
    masking_key = Expand(randomized_password, "MaskingKey", Nh)
    auth_key = Expand(randomized_password, concat(envelope_nonce, "AuthKey"), Nh)
    export_key = Expand(randomized_password, concat(envelope_nonce, "ExportKey"), Nh)
    seed = Expand(randomized_password, concat(envelope_nonce, "PrivateKey"), Nh)
    (_, client_public_key) = DeriveDiffieHellmanKeyPair(seed)

    cleartext_credentials =
        CreateCleartextCredentials(server_public_key, client_public_key,
                                   server_identity, client_identity)
    auth_tag = MAC(auth_key, concat(envelope_nonce, cleartext_credentials))

    CreateEnvelope(envelope_nonce, auth_tag, client_public_key)
    return (envelope, client_public_key, masking_key, export_key)
```

#### 4.1.3. Envelope Recovery

Clients recover their Envelope during login with the Recover function defined below.

## Recover

### Input:

- randomized\_password, a randomized password.
- server\_public\_key, the encoded server public key for the AKE protocol.
- envelope, the client's Envelope structure.
- server\_identity, the optional encoded server identity.
- client\_identity, the optional encoded client identity.

### Output:

- client\_private\_key, the encoded client private key for the AKE protocol.
- cleartext\_credentials, a CleartextCredentials structure.
- export\_key, an additional client key.

### Exceptions:

- EnvelopeRecoveryError, the envelope fails to be recovered.

```
def Recover(randomized_password, server_public_key, envelope,
            server_identity, client_identity):
    auth_key = Expand(randomized_password, concat(envelope.nonce, "AuthKey")
    export_key = Expand(randomized_password, concat(envelope.nonce, "ExportKey")
    seed = Expand(randomized_password, concat(envelope.nonce, "PrivateKey")
    (client_private_key, client_public_key) = DeriveDiffieHellmanKeyPair(seed)

    cleartext_credentials = CreateCleartextCredentials(server_public_key,
                                                       client_public_key, server_identity, client_identity)
    expected_tag = MAC(auth_key, concat(envelope.nonce, cleartext_credentials))
    If !ct_equal(envelope.auth_tag, expected_tag)
        raise EnvelopeRecoveryError
    return (client_private_key, cleartext_credentials, export_key)
```

## 5. Offline Registration

The registration process proceeds as follows. The client inputs the following values:

\*password: The client's password.

\*creds: The client credentials, as described in [Section 4](#).

The server inputs the following values:

\*server\_public\_key: The server public key for the AKE protocol.

\*credential\_identifier: A unique identifier for the client's credential, generated by the server.

\*client\_identity: The optional client identity as described in [Section 4](#).

\*opr\_f\_seed: A seed used to derive per-client OPRF keys.

The registration protocol then runs as shown below:

```
Client                                Server
-----
(request, blind) = CreateRegistrationRequest(password)

                                request
                                ----->

response = CreateRegistrationResponse(request,
                                      server_public_key,
                                      credential_identifier,
                                      oprf_seed)

                                response
                                <-----

(record, export_key) = FinalizeRegistrationRequest(response,
                                                  server_identity,
                                                  client_identity)

                                record
                                ----->
```

[Section 5.1](#) describes the formats for the above messages, and [Section 5.2](#) describes details of the functions and the corresponding parameters referenced above.

At the end of this interaction, the server stores the record object as the credential file for each client along with the associated `credential_identifier` and `client_identity` (if different). Note that the values `opr_f_seed` and `server_private_key` from the server's setup phase must also be persisted. The `opr_f_seed` value SHOULD be used for all clients; see [Section 10.9](#). The `server_private_key` may be unique for each client.

Both client and server MUST validate the other party's public key before use. See [Section 10.7](#) for more details. Upon completion, the server stores the client's credentials for later use. Moreover, the client MAY use the output `export_key` for further application-specific purposes; see [Section 10.5](#).

### 5.1. Registration Messages

This section contains definitions of the `RegistrationRequest`, `RegistrationResponse`, and `RegistrationRecord` messages exchanged between client and server during registration.

```
struct {
    uint8 blinded_message[Noe];
} RegistrationRequest;
```

blinded\_message: A serialized OPRF group element.

```
struct {
    uint8 evaluated_message[Noe];
    uint8 server_public_key[Npk];
} RegistrationResponse;
```

evaluated\_message: A serialized OPRF group element.

server\_public\_key: The server's encoded public key that will be used for the online AKE stage.

```
struct {
    uint8 client_public_key[Npk];
    uint8 masking_key[Nh];
    Envelope envelope;
} RegistrationRecord;
```

client\_public\_key: The client's encoded public key, corresponding to the private key client\_private\_key.

masking\_key: An encryption key used by the server to preserve confidentiality of the envelope during login to defend against client enumeration attacks.

envelope: The client's Envelope structure.

## 5.2. Registration Functions

This section contains definitions of the functions used by client and server during registration, including CreateRegistrationRequest, CreateRegistrationResponse, and FinalizeRegistrationRequest.

### 5.2.1. CreateRegistrationRequest

To begin the registration flow, the client executes the following function. This function can fail with a `InvalidInputError` error with negligible probability. A different input password is necessary in the event of this error.



## CreateRegistrationRequest

### Input:

- password, an opaque byte string containing the client's password.

### Output:

- request, a RegistrationRequest structure.
- blind, an OPRF scalar value.

### Exceptions:

- InvalidInputError, when Blind fails

```
def CreateRegistrationRequest(password):
    (blind, blinded_element) = Blind(password)
    blinded_message = SerializeElement(blinded_element)
    Create RegistrationRequest request with blinded_message
    return (request, blind)
```

### 5.2.2. CreateRegistrationResponse

To process the client's registration request, the server executes the following function. This function can fail with a `DeriveKeyPairError` error with negligible probability. In this case, application can choose a new `credential_identifier` for this registration record and re-run this function.

## CreateRegistrationResponse

### Input:

- request, a RegistrationRequest structure.
- server\_public\_key, the server's public key.
- credential\_identifier, an identifier that uniquely represents the credential.
- oprf\_seed, the seed of N bytes used by the server to generate an oprf key.

### Output:

- response, a RegistrationResponse structure.

### Exceptions:

- DeserializeError, when OPRF element deserialization fails.
- DeriveKeyPairError, when OPRF key derivation fails.

```
def CreateRegistrationResponse(request, server_public_key,
                              credential_identifier, oprf_seed):
    seed = Expand(oprf_seed, concat(credential_identifier, "OprfKey"), Nok
    (oprf_key, _) = DeriveKeyPair(seed, "OPAQUE-DeriveKeyPair")

    blinded_element = DeserializeElement(request.blinded_message)
    evaluated_element = BlindEvaluate(oprf_key, blinded_element)
    evaluated_message = SerializeElement(evaluated_element)

    Create RegistrationResponse response with (evaluated_message, server_p
    return response
```

### 5.2.3. FinalizeRegistrationRequest

To create the user record used for subsequent authentication and complete the registration flow, the client executes the following function.

## FinalizeRegistrationRequest

### Input:

- password, an opaque byte string containing the client's password.
- blind, an OPRF scalar value.
- response, a RegistrationResponse structure.
- server\_identity, the optional encoded server identity.
- client\_identity, the optional encoded client identity.

### Output:

- record, a RegistrationRecord structure.
- export\_key, an additional client key.

### Exceptions:

- DeserializeError, when OPRF element deserialization fails.

```
def FinalizeRegistrationRequest(password, blind, response, server_identity):
    evaluated_element = DeserializeElement(response.evaluated_message)
    oprf_output = Finalize(password, blind, evaluated_element)

    stretched_oprf_output = Stretch(oprf_output)
    randomized_password = Extract("", concat(oprf_output, stretched_oprf_o

(envelope, client_public_key, masking_key, export_key) =
    Store(randomized_password, response.server_public_key,
          server_identity, client_identity)
Create RegistrationRecord record with (client_public_key, masking_key,
return (record, export_key)
```

See [Section 6](#) for details about the output export\_key usage.

## 6. Online Authenticated Key Exchange

The generic outline of OPAQUE with a 3-message AKE protocol includes three messages: KE1, KE2, and KE3, where KE1 and KE2 include key exchange shares, e.g., DH values, sent by the client and server, respectively, and KE3 provides explicit client authentication and full forward security (without it, forward secrecy is only achieved against eavesdroppers, which is insufficient for OPAQUE security).

This section describes the online authenticated key exchange protocol flow, message encoding, and helper functions. This stage is composed of a concurrent OPRF and key exchange flow. The key exchange protocol is authenticated using the client and server credentials established during registration; see [Section 5](#). In the end, the client proves its knowledge of the password, and both client and server agree on (1) a mutually authenticated shared secret key and (2) any optional application information exchange during the handshake.

In this stage, the client inputs the following values:

\*password: The client's password.

\*client\_identity: The client identity, as described in [Section 4](#).

The server inputs the following values:

\*server\_private\_key: The server's private key for the AKE protocol.

\*server\_public\_key: The server's public key for the AKE protocol.

\*server\_identity: The server identity, as described in [Section 4](#).

\*record: The RegistrationRecord object corresponding to the client's registration.

\*credential\_identifier: An identifier that uniquely represents the credential.

\*opr\_seed: The seed used to derive per-client OPRF keys.

The client receives two outputs: a session secret and an export key. The export key is only available to the client and may be used for additional application-specific purposes, as outlined in [Section 10.5](#). The output export\_key MUST NOT be used in any way before the protocol completes successfully. See [Appendix B](#) for more details about this requirement. The server receives a single output: a session secret matching the client's.

The protocol runs as shown below:

```

Client                                     Server
-----
ke1 = GenerateKE1(password)

          ke1
          ----->

ke2 = GenerateKE2(server_identity, server_private_key,
                  server_public_key, record,
                  credential_identifier, oprf_seed, ke1)

          ke2
          <-----

(ke3,
 session_key,
 export_key) = GenerateKE3(client_identity,
                           server_identity, ke2)

          ke3
          ----->

          session_key = ServerFinish(ke3)

```

Both client and server may use implicit internal state objects to keep necessary material for the OPRF and AKE, `client_state` and `server_state`, respectively.

The client state `ClientState` may have the following fields:

- \*password: The client's password.
- \*blind: The random blinding inverter returned by `Blind()`.
- \*client\_ake\_state: The `ClientAkeState` defined in [Section 6.4](#).

The server state `ServerState` may have the following fields:

- \*server\_ake\_state: The `ServerAkeState` defined in [Section 6.4](#).

The rest of this section describes these authenticated key exchange messages and their parameters in more detail. [Section 6.1](#) defines the structure of the messages passed between client and server in the above setup. [Section 6.2](#) describes details of the functions and corresponding parameters mentioned above. [Section 6.3](#) discusses internal functions used for retrieving client credentials, and [Section 6.4](#) discusses how these functions are used to execute the authenticated key exchange protocol.

## 6.1. AKE Messages

In this section, we define the KE1, KE2, and KE3 structs that make up the AKE messages used in the protocol. KE1 is composed of a `CredentialRequest` and `AuthRequest`, and KE2 is composed of a `CredentialResponse` and `AuthResponse`.

```
struct {
    uint8 client_nonce[Nn];
    uint8 client_public_keyshare[Npk];
} AuthRequest;
```

`client_nonce`: A fresh randomly generated nonce of length `Nn`.

`client_public_keyshare`: A serialized client ephemeral public key of fixed size `Npk`.

```
struct {
    CredentialRequest credential_request;
    AuthRequest auth_request;
} KE1;
```

`credential_request`: A `CredentialRequest` structure.

`auth_request`: An `AuthRequest` structure.

```
struct {
    uint8 server_nonce[Nn];
    uint8 server_public_keyshare[Npk];
    uint8 server_mac[Nm];
} AuthResponse;
```

`server_nonce`: A fresh randomly generated nonce of length `Nn`.

`server_public_keyshare`: A server ephemeral public key of fixed size `Npk`, where `Npk` depends on the corresponding prime order group.

`server_mac`: An authentication tag computed over the handshake transcript computed using `Km2`, defined below.

```
struct {
    CredentialResponse credential_response;
    AuthResponse auth_response;
} KE2;
```

`credential_response`: A `CredentialResponse` structure.

`auth_response`: An `AuthResponse` structure.

```
struct {
  uint8 client_mac[Nm];
} KE3;
```

client\_mac: An authentication tag computed over the handshake transcript of fixed size Nm, computed using Km2, defined below.

## 6.2. AKE Functions

In this section, we define the main functions used to produce the AKE messages in the protocol. Note that this section relies on definitions of subroutines defined in later sections:

\*CreateCredentialRequest, CreateCredentialResponse, RecoverCredentials defined in [Section 6.3](#)

\*AuthClientStart, AuthServerRespond, AuthClientFinalize, and AuthServerFinalize defined in [Section 6.4.3](#) and [Section 6.4.4](#)

### 6.2.1. GenerateKE1

The GenerateKE1 function begins the AKE protocol and produces the client's KE1 output for the server.

GenerateKE1

State:

- state, a ClientState structure.

Input:

- password, an opaque byte string containing the client's password.

Output:

- ke1, a KE1 message structure.

```
def GenerateKE1(password):
  request, blind = CreateCredentialRequest(password)
  state.password = password
  state.blind = blind
  ke1 = AuthClientStart(request)
  return ke1
```

### 6.2.2. GenerateKE2

The GenerateKE2 function continues the AKE protocol by processing the client's KE1 message and producing the server's KE2 output.

## GenerateKE2

### State:

- state, a ServerState structure.

### Input:

- server\_identity, the optional encoded server identity, which is set to server\_public\_key if not specified.
- server\_private\_key, the server's private key.
- server\_public\_key, the server's public key.
- record, the client's RegistrationRecord structure.
- credential\_identifier, an identifier that uniquely represents the cred
- oprf\_seed, the server-side seed of Nh bytes used to generate an oprf\_k
- ke1, a KE1 message structure.
- client\_identity, the optional encoded client identity, which is set to client\_public\_key if not specified.

### Output:

- ke2, a KE2 structure.

```
def GenerateKE2(server_identity, server_private_key, server_public_key,
                record, credential_identifier, oprf_seed, ke1, client_id
credential_response = CreateCredentialResponse(ke1.credential_request,
credential_identifier, oprf_seed)
cleartext_credentials = CreateCleartextCredentials(server_public_key,
record.client_public_key, server_identity, client_
auth_response = AuthServerRespond(cleartext_credentials, server_privat
record.client_public_key, ke1, credential_response)
Create KE2 ke2 with (credential_response, auth_response)
return ke2
```

### 6.2.3. GenerateKE3

The GenerateKE3 function completes the AKE protocol for the client and produces the client's KE3 output for the server, as well as the session\_key and export\_key outputs from the AKE.



## GenerateKE3

### State:

- state, a ClientState structure.

### Input:

- client\_identity, the optional encoded client identity, which is set to client\_public\_key if not specified.
- server\_identity, the optional encoded server identity, which is set to server\_public\_key if not specified.
- ke2, a KE2 message structure.

### Output:

- ke3, a KE3 message structure.
- session\_key, the session's shared secret.
- export\_key, an additional client key.

```
def GenerateKE3(client_identity, server_identity, ke2):
    (client_private_key, cleartext_credentials, server_public_key, export_
     RecoverCredentials(state.password, state.blind, ke2.credential_respo
                        server_identity, client_identity)
    (ke3, session_key) =
        AuthClientFinalize(cleartext_credentials, client_private_key, ke2)
    return (ke3, session_key, export_key)
```

### 6.2.4. ServerFinish

The ServerFinish function completes the AKE protocol for the server, yielding the session\_key. Since the OPRF is a two-message protocol, KE3 has no element of the OPRF, and it, therefore, invokes the AKE's AuthServerFinalize directly. The AuthServerFinalize function takes KE3 as input and MUST verify the client authentication material it contains before the session\_key value can be used. This verification is necessary to ensure forward secrecy against active attackers.

### ServerFinish

#### State:

- state, a ServerState structure.

#### Input:

- ke3, a KE3 structure.

#### Output:

- session\_key, the shared session secret if and only if ke3 is valid.

```
def ServerFinish(ke3):
    return AuthServerFinalize(ke3)
```

This function MUST NOT return the `session_key` value if the client authentication material is invalid, and may instead return an appropriate error message such as `ClientAuthenticationError`, invoked from `AuthServerFinalize`.

### 6.3. Credential Retrieval

This section describes the sub-protocol run during authentication to retrieve and recover the client credentials.

#### 6.3.1. Credential Retrieval Messages

This section describes the `CredentialRequest` and `CredentialResponse` messages exchanged between client and server to perform credential retrieval.

```
struct {  
    uint8 blinded_message[Noe];  
} CredentialRequest;
```

`blinded_message`: A serialized OPRF group element.

```
struct {  
    uint8 evaluated_message[Noe];  
    uint8 masking_nonce[Nn];  
    uint8 masked_response[Npk + Nn + Nm];  
} CredentialResponse;
```

`evaluated_message`: A serialized OPRF group element.

`masking_nonce`: A nonce used for the confidentiality of the `masked_response` field.

`masked_response`: An encrypted form of the server's public key and the client's `Envelope` structure.

#### 6.3.2. Credential Retrieval Functions

This section describes the `CreateCredentialRequest`, `CreateCredentialResponse`, and `RecoverCredentials` functions used for credential retrieval.

##### 6.3.2.1. CreateCredentialRequest

The `CreateCredentialRequest` is used by the client to initiate the credential retrieval process, and it produces a `CredentialRequest` message and OPRF state. Like `CreateRegistrationRequest`, this function can fail with a `InvalidInputError` error with negligible probability. However, this should not occur since registration (via

CreateRegistrationRequest) will fail when provided the same password input.

#### CreateCredentialRequest

##### Input:

- password, an opaque byte string containing the client's password.

##### Output:

- request, a CredentialRequest structure.
- blind, an OPRF scalar value.

##### Exceptions:

- InvalidInputError, when Blind fails

```
def CreateCredentialRequest(password):  
    (blind, blinded_element) = Blind(password)  
    blinded_message = SerializeElement(blinded_element)  
    Create CredentialRequest request with blinded_message  
    return (request, blind)
```

#### 6.3.2.2. CreateCredentialResponse

The CreateCredentialResponse function is used by the server to process the client's CredentialRequest message and complete the credential retrieval process, producing a CredentialResponse.

There are two scenarios to handle for the construction of a CredentialResponse object: either the record for the client exists (corresponding to a properly registered client), or it was never created (corresponding to a client that has yet to register).

In the case of an existing record with the corresponding identifier credential\_identifier, the server invokes the following function to produce a CredentialResponse:

## CreateCredentialResponse

### Input:

- request, a CredentialRequest structure.
- server\_public\_key, the public key of the server.
- record, an instance of RegistrationRecord which is the server's output from registration.
- credential\_identifier, an identifier that uniquely represents the cred
- oprf\_seed, the server-side seed of Nh bytes used to generate an oprf\_k

### Output:

- response, a CredentialResponse structure.

### Exceptions:

- DeserializeError, when OPRF element deserialization fails.

```
def CreateCredentialResponse(request, server_public_key, record,
                             credential_identifier, oprf_seed):
    seed = Expand(oprf_seed, concat(credential_identifier, "OprfKey"), Nok
    (oprf_key, _) = DeriveKeyPair(seed, "OPAQUE-DeriveKeyPair")

    blinded_element = DeserializeElement(request.blinded_message)
    evaluated_element = BlindEvaluate(oprf_key, blinded_element)
    evaluated_message = SerializeElement(evaluated_element)

    masking_nonce = random(Nn)
    credential_response_pad = Expand(record.masking_key,
                                     concat(masking_nonce, "CredentialResp
                                     Npk + Nn + Nm)
    masked_response = xor(credential_response_pad,
                          concat(server_public_key, record.envelope))
    Create CredentialResponse response with (evaluated_message, masking_no
    return response
```

In the case of a record that does not exist and if client enumeration prevention is desired, the server MUST respond to the credential request to fake the existence of the record. The server SHOULD invoke the CreateCredentialResponse function with a fake client record argument that is configured so that:

\*record.client\_public\_key is set to a randomly generated public key of length Npk

\*record.masking\_key is set to a random byte string of length Nh

\*record.envelope is set to the byte string consisting only of zeros of length Nn + Nm

It is RECOMMENDED that a fake client record is created once (e.g. as the first user record of the application) and stored alongside

legitimate client records. This allows servers to locate the record in a time comparable to that of a legitimate client record.

Note that the responses output by either scenario are indistinguishable to an adversary that is unable to guess the registered password for the client corresponding to `credential_identifier`.

#### **6.3.2.3. RecoverCredentials**

The `RecoverCredentials` function is used by the client to process the server's `CredentialResponse` message and produce the client's private key, server public key, and the `export_key`.

## RecoverCredentials

### Input:

- password, an opaque byte string containing the client's password.
- blind, an OPRF scalar value.
- response, a CredentialResponse structure.
- server\_identity, The optional encoded server identity.
- client\_identity, The encoded client identity.

### Output:

- client\_private\_key, the encoded client private key for the AKE protocol.
- cleartext\_credentials, a CleartextCredentials structure.
- server\_public\_key, the public key of the server.
- export\_key, an additional client key.

### Exceptions:

- DeserializeError, when OPRF element deserialization fails.

```
def RecoverCredentials(password, blind, response,
                      server_identity, client_identity):
    evaluated_element = DeserializeElement(response.evaluated_message)

    oprf_output = Finalize(password, blind, evaluated_element)
    stretched_oprf_output = Stretch(oprf_output)
    randomized_password = Extract("", concat(oprf_output, stretched_oprf_o

    masking_key = Expand(randomized_password, "MaskingKey", Nh)
    credential_response_pad = Expand(masking_key,
                                     concat(response.masking_nonce, "Crede
                                     Npk + Nn + Nm)
    concat(server_public_key, envelope) = xor(credential_response_pad,
                                             response.masked_response)
    (client_private_key, cleartext_credentials, export_key) =
        Recover(randomized_password, server_public_key, envelope,
                server_identity, client_identity)

    return (client_private_key, cleartext_credentials, server_public_key,
```

## 6.4. 3DH Protocol

This section describes the authenticated key exchange protocol for OPAQUE using 3DH, a 3-message AKE which satisfies the forward secrecy and KCI properties discussed in [Section 10](#).

The client AKE state ClientAkeState mentioned in [Section 6](#) has the following fields:

\*client\_secret: An opaque byte string of length Nsk.

\*ke1: A value of type KE1.

The server AKE state `ServerAkeState` mentioned in [Section 6](#) has the following fields:

\*`expected_client_mac`: An opaque byte string of length `Nm`.

\*`session_key`: An opaque byte string of length `Nx`.

[Section 6.4.3](#) and [Section 6.4.4](#) specify the inner workings of client and server functions, respectively.

#### 6.4.1. 3DH Key Exchange Functions

We assume the following functions to exist for all Diffie-Hellman key exchange variants:

\*`DeriveDiffieHellmanKeyPair(seed)`: Derive a private and public Diffie-Hellman key pair deterministically from the input `seed`. The type of the private key depends on the implementation, whereas the type of the public key is a byte string of `Npk` bytes.

\*`DiffieHellman(k, B)`: A function that performs the Diffie-Hellman operation between the private input `k` and public input `B`. The output of this function is a unique, fixed-length byte string.

Implementations for recommended groups in [Section 7](#), as well as groups covered by test vectors in [Appendix D](#), are described in the following sections.

##### 6.4.1.1. 3DH ristretto255

This section describes the implementation of the Diffie-Hellman key exchange functions based on `ristretto255`, as defined in [\[RISTRETTO\]](#).

\*`DeriveDiffieHellmanKeyPair(seed)`: This function is implemented as `DeriveKeyPair(seed, "OPAQUE-DeriveDiffieHellmanKeyPair")`, where `DeriveKeyPair` is as specified in [\[OPRF\]](#), [Section 3.2](#). The public value from `DeriveKeyPair` is encoded using `SerializeElement` from [Section 2.1](#) of [\[OPRF\]](#).

\*`DiffieHellman(k, B)`: Implemented as scalar multiplication as described in [Section 4](#) of [\[RISTRETTO\]](#) after decoding `B` from its encoded input using the `Decode` function in [Section 4.3.1](#) of [\[RISTRETTO\]](#). The output is then encoded using the `SerializeElement` function of the OPRF group described in [\[OPRF\]](#), [Section 2.1](#).

#### 6.4.1.2. 3DH P-256

This section describes the implementation of the Diffie-Hellman key exchange functions based on NIST P-256, as defined in [[NISTCurves](#)].

\*DeriveDiffieHellmanKeyPair(seed): This function is implemented as DeriveKeyPair(seed, "OPAQUE-DeriveDiffieHellmanKeyPair"), where DeriveKeyPair is as specified in [OPRF], [Section 3.2](#). The public value from DeriveKeyPair is encoded using SerializeElement from [Section 2.1](#) of [OPRF].

\*DiffieHellman(k, B): Implemented as scalar multiplication as described in [[NISTCurves](#)], after decoding B from its encoded input using the compressed Octet-String-to-Elliptic-Curve-Point method according to [[NISTCurves](#)]. The output is then encoded using the SerializeElement function of the OPRF group described in [OPRF], [Section 2.1](#).

#### 6.4.1.3. 3DH Curve25519

This section describes the implementation of the Diffie-Hellman key exchange functions based on Curve25519, as defined in [[Curve25519](#)].

\*DeriveDiffieHellmanKeyPair(seed): This function is implemented by returning the private key k based on seed (of length Nseed = 32 bytes), as described in [Section 5](#) of [[Curve25519](#)], as well as the result of DiffieHellman(k, B), where B is the base point of Curve25519.

\*DiffieHellman(k, B): Implemented using the X25519 function in [Section 5](#) of [[Curve25519](#)]. The output is then used raw, with no processing.

### 6.4.2. Key Schedule Functions

This section contains functions used for the AKE key schedule.

#### 6.4.2.1. Transcript Functions

The OPAQUE-3DH key derivation procedures make use of the functions below, re-purposed from TLS 1.3 [[RFC8446](#)].

```
Expand-Label(Secret, Label, Context, Length) =  
    Expand(Secret, CustomLabel, Length)
```

Where CustomLabel is specified as:



```
struct {
    uint16 length = Length;
    opaque label<8..255> = "OPAQUE-" + Label;
    uint8 context<0..255> = Context;
} CustomLabel;
```

```
Derive-Secret(Secret, Label, Transcript-Hash) =
    Expand-Label(Secret, Label, Transcript-Hash, Nx)
```

Note that the `Label` parameter is not a NULL-terminated string.

OPAQUE-3DH can optionally include shared context information in the transcript, such as configuration parameters or application-specific info, e.g. "appXYZ-v1.2.3".

The OPAQUE-3DH key schedule requires a preamble, which is computed as follows.

Preamble

Parameters:

- `context`, optional shared context information.

Input:

- `client_identity`, the optional encoded client identity, which is set to `client_public_key` if not specified.
- `ke1`, a KE1 message structure.
- `server_identity`, the optional encoded server identity, which is set to `server_public_key` if not specified.
- `credential_response`, the corresponding field on the KE2 structure.
- `server_nonce`, the corresponding field on the AuthResponse structure.
- `server_public_keyshare`, the corresponding field on the AuthResponse st

Output:

- `preamble`, the protocol transcript with identities and messages.

```
def Preamble(client_identity, ke1, server_identity, ke2):
    preamble = concat("RFCXXXX",
        I2OSP(len(context), 2), context,
        I2OSP(len(client_identity), 2), client_identity,
        ke1,
        I2OSP(len(server_identity), 2), server_identity,
        credential_response,
        server_nonce,
        server_public_keyshare)

    return preamble
```

#### 6.4.2.2. Shared Secret Derivation

The OPAQUE-3DH shared secret derived during the key exchange protocol is computed using the following helper function.

DeriveKeys

Input:

- ikm, input key material.
- preamble, the protocol transcript with identities and messages.

Output:

- Km2, a MAC authentication key.
- Km3, a MAC authentication key.
- session\_key, the shared session secret.

```
def DeriveKeys(ikm, preamble):
    prk = Extract("", ikm)
    handshake_secret = Derive-Secret(prk, "HandshakeSecret", Hash(preamble))
    session_key = Derive-Secret(prk, "SessionKey", Hash(preamble))
    Km2 = Derive-Secret(handshake_secret, "ServerMAC", "")
    Km3 = Derive-Secret(handshake_secret, "ClientMAC", "")
    return (Km2, Km3, session_key)
```

#### 6.4.3. 3DH Client Functions

The AuthClientStart function is used by the client to create a KE1 structure.

## AuthClientStart

### Parameters:

- Nn, the nonce length.

### State:

- state, a ClientAkeState structure.

### Input:

- credential\_request, a CredentialRequest structure.

### Output:

- ke1, a KE1 structure.

```
def AuthClientStart(credential_request):
    client_nonce = random(Nn)
    client_keyshare_seed = random(Nseed)
    (client_secret, client_public_keyshare) = DeriveDiffieHellmanKeyPair(c
Create AuthRequest auth_request with (client_nonce, client_public_keys
Create KE1 ke1 with (credential_request, auth_request)
    state.client_secret = client_secret
    state.ke1 = ke1
    return ke1
```

The AuthClientFinalize function is used by the client to create a KE3 message and output session\_key using the server's KE2 message and recovered credential information.

## AuthClientFinalize

### State:

- state, a ClientAkeState structure.

### Input:

- cleartext\_credentials, a CleartextCredentials structure.
- client\_private\_key, the client's private key.
- ke2, a KE2 message structure.

### Output:

- ke3, a KE3 structure.
- session\_key, the shared session secret.

### Exceptions:

- ServerAuthenticationError, the handshake fails.

```
def AuthClientFinalize(cleartext_credentials, client_private_key, ke2):
```

```
    dh1 = DiffieHellman(state.client_secret, ke2.auth_response.server_public_key)
    dh2 = DiffieHellman(state.client_secret, cleartext_credentials.server_public_key)
    dh3 = DiffieHellman(client_private_key, ke2.auth_response.server_public_key)
    ikm = concat(dh1, dh2, dh3)
```

```
    preamble = Preamble(cleartext_credentials.client_identity,
                        state.ke1,
                        cleartext_credentials.server_identity,
                        ke2.credential_response,
                        ke2.auth_response.server_nonce,
                        ke2.auth_response.server_public_keyshare)
```

```
    Km2, Km3, session_key = DeriveKeys(ikm, preamble)
    expected_server_mac = MAC(Km2, Hash(preamble))
    if !ct_equal(ke2.server_mac, expected_server_mac),
        raise ServerAuthenticationError
    client_mac = MAC(Km3, Hash(concat(preamble, expected_server_mac)))
    Create KE3 ke3 with client_mac
    return (ke3, session_key)
```

#### 6.4.4. 3DH Server Functions

The AuthServerRespond function is used by the server to process the client's KE1 message and public credential information to create a KE2 message.

## AuthServerRespond

### Parameters:

- Nn, the nonce length.

### State:

- state, a ServerAkeState structure.

### Input:

- cleartext\_credentials, a CleartextCredentials structure.
- server\_private\_key, the server's private key.
- client\_public\_key, the client's public key.
- ke1, a KE1 message structure.

### Output:

- auth\_response, an AuthResponse structure.

```
def AuthServerRespond(cleartext_credentials, server_private_key, client_
    server_nonce = random(Nn)
    server_keyshare_seed = random(Nseed)
    (server_private_keyshare, server_public_keyshare) = DeriveDiffieHellma
    preamble = Preamble(cleartext_credentials.client_identity,
                        ke1,
                        cleartext_credentials.server_identity,
                        credential_response,
                        server_nonce,
                        server_public_keyshare)

    dh1 = DiffieHellman(server_private_keyshare, ke1.auth_request.client_p
    dh2 = DiffieHellman(server_private_key, ke1.auth_request.client_public
    dh3 = DiffieHellman(server_private_keyshare, client_public_key)
    ikm = concat(dh1, dh2, dh3)

    Km2, Km3, session_key = DeriveKeys(ikm, preamble)
    server_mac = MAC(Km2, Hash(preamble))
    expected_client_mac = MAC(Km3, Hash(concat(preamble, server_mac)))

    state.expected_client_mac = MAC(Km3, Hash(concat(preamble, server_mac)
    state.session_key = session_key
    Create AuthResponse auth_response with (server_nonce, server_public_ke
    return auth_response
```

The AuthServerFinalize function is used by the server to process the client's KE3 message and output the final session\_key.

AuthServerFinalize

State:

- state, a ServerAkeState structure.

Input:

- ke3, a KE3 structure.

Output:

- session\_key, the shared session secret if and only if ke3 is valid.

Exceptions:

- ClientAuthenticationError, the handshake fails.

```
def AuthServerFinalize(ke3):
    if !ct_equal(ke3.client_mac, state.expected_client_mac):
        raise ClientAuthenticationError
    return state.session_key
```

## 7. Configurations

An OPAQUE-3DH configuration is a tuple (OPRF, KDF, MAC, Hash, KSF, Group, Context) such that the following conditions are met:

\*The OPRF protocol uses the "base mode" variant of [\[OPRF\]](#) and implements the interface in [Section 2](#). Examples include ristretto255-SHA512 and P256-SHA256.

\*The KDF, MAC, and Hash functions implement the interfaces in [Section 2](#). Examples include HKDF [\[RFC5869\]](#) for the KDF, HMAC [\[RFC2104\]](#) for the MAC, and SHA-256 and SHA-512 for the Hash functions. If an extensible output function such as SHAKE128 [\[FIPS202\]](#) is used then the output length Nh MUST be chosen to align with the target security level of the OPAQUE configuration. For example, if the target security parameter for the configuration is 128-bits, then Nh SHOULD be at least 32 bytes.

\*The KSF is determined by the application and implements the interface in [Section 2](#). As noted, collision resistance is required. Examples for KSF include Argon2id [\[ARGON2\]](#), scrypt [\[SCRYPT\]](#), and PBKDF2 [\[PBKDF2\]](#) with fixed parameter choices. See [Section 8](#) for more information about this choice of function.

\*The Group mode identifies the group used in the OPAQUE-3DH AKE. This SHOULD match that of the OPRF. For example, if the OPRF is ristretto255-SHA512, then Group SHOULD be ristretto255.

Context is the shared parameter used to construct the preamble in [Section 6.4.2.1](#). This parameter SHOULD include any application-

specific configuration information or parameters that are needed to prevent cross-protocol or downgrade attacks.

Absent an application-specific profile, the following configurations are RECOMMENDED:

\*ristretto255-SHA512, HKDF-SHA-512, HMAC-SHA-512, SHA-512, Argon2id(S = zeroes(16), p = 4, T = Nh, m = 2<sup>21</sup>, t = 1, v = 0x13, K = nil, X = nil, y = 2), ristretto255

\*P256-SHA256, HKDF-SHA-256, HMAC-SHA-256, SHA-256, Argon2id(S = zeroes(16), p = 4, T = Nh, m = 2<sup>21</sup>, t = 1, v = 0x13, K = nil, X = nil, y = 2), P-256

\*P256-SHA256, HKDF-SHA-256, HMAC-SHA-256, SHA-256, scrypt(N = 32768, r = 8, p = 1), P-256

Future configurations may specify different combinations of dependent algorithms, with the following considerations:

1. The size of AKE public and private keys -- Npk and Nsk, respectively -- must adhere to the output length limitations of the KDF Expand function. If HKDF is used, this means  $N_{pk}, N_{sk} \leq 255 * N_x$ , where  $N_x$  is the output size of the underlying hash function. See [[RFC5869](#)] for details.
2. The output size of the Hash function SHOULD be long enough to produce a key for MAC of suitable length. For example, if MAC is HMAC-SHA256, then Nh could be 32 bytes.

## 8. Application Considerations

Beyond choosing an appropriate configuration, there are several parameters which applications can use to control OPAQUE:

\*Credential identifier: As described in [Section 5](#), this is a unique handle to the client's credential being stored. In applications where there are alternate client identities that accompany an account, such as a username or email address, this identifier can be set to those alternate values. For simplicity, applications may choose to set `credential_identifier` to be equal to `client_identity`. Applications MUST NOT use the same credential identifier for multiple clients.

\*Context information: As described in [Section 7](#), applications may include a shared context string that is authenticated as part of the handshake. This parameter SHOULD include any configuration information or parameters that are needed to prevent cross-protocol or downgrade attacks. This context information is not sent over the wire in any key exchange messages. However,

applications may choose to send it alongside key exchange messages if needed for their use case.

\*Client and server identities: As described in [Section 4](#), clients and servers are identified with their public keys by default. However, applications may choose alternate identities that are pinned to these public keys. For example, servers may use a domain name instead of a public key as their identifier. Absent alternate notions of identity, applications SHOULD set these identities to nil and rely solely on public key information.

\*Configuration and envelope updates: Applications may wish to update or change their configuration or other parameters which affect the client's `RegistrationRecord` over time. Some reasons for changing these are to use different cryptographic algorithms, e.g., a different KSF with improved parameters, or to update key material that is cryptographically bound to the `RegistrationRecord`, such as the server's public key (`server_public_key`). Any such change will require users to re-register to create a new `RegistrationRecord`. Supporting these types of updates can be helpful for applications which anticipate such changes in their deployment setting.

\*Password hardening parameters: Key stretching is done to help prevent password disclosure in the event of server compromise; see [Section 10.8](#). There is no ideal or default set of parameters, though relevant specifications for KSFs give some reasonable defaults.

\*Enumeration prevention: As described in [Section 6.3.2.2](#), if servers receive a credential request for a non-existent client, they SHOULD respond with a "fake" response to prevent active client enumeration attacks. Servers that implement this mitigation SHOULD use the same configuration information (such as the `opr_f_seed`) for all clients; see [Section 10.9](#). In settings where this attack is not a concern, servers may choose to not support this functionality.

## 9. Implementation Considerations

This section documents considerations for OPAQUE implementations. This includes implementation safeguards and error handling considerations.

### 9.1. Implementation Safeguards

Certain information created, exchanged, and processed in OPAQUE is sensitive. Specifically, all private key material and intermediate values, along with the outputs of the key exchange phase, are all secret. Implementations should not retain these values in memory



when no longer needed. Moreover, all operations, particularly the cryptographic and group arithmetic operations, should be constant-time and independent of the bits of any secrets. This includes any conditional branching during the creation of the credential response, as needed to mitigate client enumeration attacks.

As specified in [Section 5](#) and [Section 6](#), OPAQUE only requires the client password as input to the OPRF for registration and authentication. However, implementations can incorporate the client identity alongside the password as input to the OPRF. This provides additional client-side entropy which can supplement the entropy that should be introduced by the server during an honest execution of the protocol. This also provides domain separation between different clients that might otherwise share the same password.

Finally, note that online guessing attacks (against any aPAKE) can be done from both the client side and the server side. In particular, a malicious server can attempt to simulate honest responses to learn the client's password. Implementations and deployments of OPAQUE SHOULD consider additional checks to mitigate this type of attack: for instance, by ensuring that there is a server-authenticated channel over which OPAQUE registration and login are run.

## 9.2. Error Considerations

Some functions included in this specification are fallible. For example, the authenticated key exchange protocol may fail because the client's password was incorrect or the authentication check failed, yielding an error. The explicit errors generated throughout this specification, along with conditions that lead to each error, are as follows:

\*EnvelopeRecoveryError: The envelope Recover function failed to produce any authentication key material; [Section 4.1.3](#).

\*ServerAuthenticationError: The client failed to complete the authenticated key exchange protocol with the server; [Section 6.4.3](#).

\*ClientAuthenticationError: The server failed to complete the authenticated key exchange protocol with the client; [Section 6.4.4](#).

Beyond these explicit errors, OPAQUE implementations can produce implicit errors. For example, if protocol messages sent between client and server do not match their expected size, an implementation should produce an error. More generally, if any protocol message received from the peer is invalid, perhaps because the message contains an invalid public key (indicated by the AKE

DeserializeElement function failing) or an invalid OPRF element (indicated by the OPRF DeserializeElement), then an implementation should produce an error.

The errors in this document are meant as a guide for implementors. They are not an exhaustive list of all the errors an implementation might emit. For example, an implementation might run out of memory.

## 10. Security Considerations

OPAQUE is defined as the composition of two functionalities: an OPRF and an AKE protocol. It can be seen as a "compiler" for transforming any AKE protocol (with KCI security and forward secrecy; see below) into a secure aPAKE protocol. In OPAQUE, the client stores a secret private key at the server during password registration and retrieves this key each time it needs to authenticate to the server. The OPRF security properties ensure that only the correct password can unlock the private key while at the same time avoiding potential offline guessing attacks. This general composability property provides great flexibility and enables a variety of OPAQUE instantiations, from optimized performance to integration with existing authenticated key exchange protocols such as TLS.

### 10.1. Notable Design Differences

**RFC editor: remove this section before publication.**

The specification as written here differs from the original cryptographic design in [JKX18] and the corresponding CFRG document [I-D.krawczyk-cfrg-opaque-03], both of which were used as input to the CFRG PAKE competition. This section describes these differences, including their motivation and explanation as to why they preserve the provable security of OPAQUE based on [JKX18].

The following list enumerates important functional differences that were made as part of the protocol specification process to address application or implementation considerations.

- \*Clients construct envelope contents without revealing the password to the server, as described in [Section 5](#), whereas the servers construct envelopes in [JKX18]. This change adds to the security of the protocol. [JKX18] considered the case where the envelope was constructed by the server for reasons of compatibility with previous UC modeling. An upcoming paper analyzes the registration phase as specified in this document. This change was made to support registration flows where the client chooses the password and wishes to keep it secret from the server, and it is compatible with the variant in [JKX18] that was originally analyzed.

\*Envelopes do not contain encrypted credentials. Instead, envelopes contain information used to derive client private key material for the AKE. This variant is also analyzed in the new paper referred to in the previous item. This change improves the assumption behind the protocol by getting rid of equivocality and random key robustness for the encryption function. The latter property is only required for authentication and achieved by a collision-resistant MAC. This change was made for two reasons. First, it reduces the number of bytes stored in envelopes, which is a helpful improvement for large applications of OPAQUE with many registered users. Second, it removes the need for client applications to generate authentication keys during registration. Instead, this responsibility is handled by OPAQUE, thereby simplifying the client interface to the protocol.

\*Envelopes are masked with a per-user masking key as a way of preventing client enumeration attacks. See [Section 10.9](#) for more details. This extension is not needed for the security of OPAQUE as an aPAKE but only used to provide a defense against enumeration attacks. In the analysis, the masking key can be simulated as a (pseudo) random key. This change was made to support real-world use cases where client or user enumeration is a security (or privacy) risk.

\*Per-user OPRF keys are derived from a client identity and cross-user PRF seed as a mitigation against client enumeration attacks. See [Section 10.9](#) for more details. The analysis of OPAQUE assumes OPRF keys of different users are independently random or pseudorandom. Deriving these keys via a single PRF (i.e., with a single cross-user key) applied to users' identities satisfies this assumption. This change was made to support real-world use cases where client or user enumeration is a security (or privacy) risk.

\*The protocol outputs an export key for the client in addition to a shared session key that can be used for application-specific purposes. This key is a pseudorandom value independent of other values in the protocol and has no influence on the security analysis (it can be simulated with a random output). This change was made to support more application use cases for OPAQUE, such as the use of OPAQUE for end-to-end encrypted backups; see [\[WhatsAppE2E\]](#).

\*The protocol admits optional application-layer client and server identities. In the absence of these identities, the client and server are authenticated against their public keys. Binding authentication to identities is part of the AKE part of OPAQUE. The type of identities and their semantics are application dependent and independent of the protocol analysis. This change

was made to simplify client and server interfaces to the protocol by removing the need to specify additional identities alongside their corresponding public authentication keys when not needed.

\*The protocol admits application-specific context information configured out-of-band in the AKE transcript. This allows domain separation between different application uses of OPAQUE. This is a mechanism for the AKE component and is best practice for domain separation between different applications of the protocol. This change was made to allow different applications to use OPAQUE without the risk of cross-protocol attacks.

\*Servers use a separate identifier for computing OPRF evaluations and indexing into the password file storage, called the `credential_identifier`. This allows clients to change their application-layer identity (`client_identity`) without inducing server-side changes, e.g., by changing an email address associated with a given account. This mechanism is part of the derivation of OPRF keys via a single PRF. As long as the derivation of different OPRF keys from a single OPRF has different PRF inputs, the protocol is secure. The choice of such inputs is up to the application.

\*[[JKX18](#)] comments on a defense against offline dictionary attacks upon server compromise or honest-but-curious servers. The authors suggest implementing the OPRF phase as a threshold OPRF [[TOPPSS](#)], effectively forcing an attacker to act online or to control at least  $t$  key shares (among the total  $n$ ), where  $t$  is the threshold number of shares necessary to recombine the secret OPRF key, and only then be able to run an offline dictionary attack. This implementation only affects the server and changes nothing for the client. Furthermore, if the threshold OPRF servers holding these keys are separate from the authentication server, then recovering all  $n$  shares would still not suffice to run an offline dictionary attack without access to the client record database. However, this mechanism is out of scope for this document.

The following list enumerates notable differences and refinements from the original cryptographic design in [[JKX18](#)] and the corresponding CFRG document [[I-D.krawczyk-cfrg-opaque-03](#)] that were made to make this specification suitable for interoperable implementations.

\*[[JKX18](#)] used a generic prime-order group for the DH-OPRF and HMQV operations, and includes necessary prime-order subgroup checks when receiving attacker-controlled values over the wire. This specification instantiates the prime-order group used for 3DH using prime-order groups based on elliptic curves, as described in [[I-D.irtf-cfrg-voprf](#)], [Section 2.1](#). This specification also

delegates OPRF group choice and operations to [\[I-D.irtf-cfrg-voprf\]](#). As such, the prime-order group as used in the OPRF and 3DH as specified in this document both adhere to the requirements as [\[JKX18\]](#).

\*[\[JKX18\]](#) specified DH-OPRF (see Appendix B) to instantiate the OPRF functionality in the protocol. A critical part of DH-OPRF is the hash-to-group operation, which was not instantiated in the original analysis. However, the requirements for this operation were included. This specification instantiates the OPRF functionality based on the [\[I-D.irtf-cfrg-voprf\]](#), which is identical to the DH-OPRF functionality in [\[JKX18\]](#) and, concretely, uses the hash-to-curve functions in [\[I-D.irtf-cfrg-hash-to-curve\]](#). All hash-to-curve methods in [\[I-D.irtf-cfrg-hash-to-curve\]](#) are compliant with the requirement in [\[JKX18\]](#), namely, that the output be a member of the prime-order group.

\*[\[JKX18\]](#) and [\[I-D.krawczyk-cfrg-opaque-03\]](#) both used HMQV as the AKE for the protocol. However, this document fully specifies 3DH instead of HMQV (though a sketch for how to instantiate OPAQUE using HMQV is included in [Appendix C.1](#)). Since 3DH satisfies the essential requirements for the AKE as described in [\[JKX18\]](#) and [\[I-D.krawczyk-cfrg-opaque-03\]](#), as recalled in [Section 10.2](#), this change preserves the overall security of the protocol. 3DH was chosen for its simplicity and ease of implementation.

\*The DH-OPRF and HMQV instantiation of OPAQUE in [\[JKX18\]](#), Figure 12 uses a different transcript than that which is described in this specification. In particular, the key exchange transcript specified in [Section 6.4](#) is a superset of the transcript as defined in [\[JKX18\]](#). This was done to align with best practices, such as is done for key exchange protocols like TLS 1.3 [\[RFC8446\]](#).

\*Neither [\[JKX18\]](#) nor [\[I-D.krawczyk-cfrg-opaque-03\]](#) included wire format details for the protocol, which is essential for interoperability. This specification fills this gap by including such wire format details and corresponding test vectors; see [Appendix D](#).

## 10.2. Security Analysis

Jarecki et al. [\[JKX18\]](#) proved the security of OPAQUE in a strong aPAKE model that ensures security against pre-computation attacks and is formulated in the Universal Composability (UC) framework [\[Canetti01\]](#) under the random oracle model. This assumes security of the OPRF function and the underlying key exchange protocol. In turn, the security of the OPRF protocol from [\[OPRF\]](#) is proven in the

random oracle model under the One-More Diffie-Hellman assumption [[JKKX16](#)].

OPAQUE's design builds on a line of work initiated in the seminal paper of Ford and Kaliski [[FK00](#)] and is based on the HPAKE protocol of Xavier Boyen [[Boyen09](#)] and the (1,1)-PPSS protocol from Jarecki et al. [[JKKX16](#)]. None of these papers considered security against pre-computation attacks or presented a proof of aPAKE security (not even in a weak model).

The KCI property required from AKE protocols for use with OPAQUE states that knowledge of a party's private key does not allow an attacker to impersonate others to that party. This is an important security property achieved by most public-key based AKE protocols, including protocols that use signatures or public key encryption for authentication. It is also a property of many implicitly authenticated protocols, e.g., HMQV, but not all of them. We also note that key exchange protocols based on shared keys do not satisfy the KCI requirement, hence they are not considered in the OPAQUE setting. We note that KCI is needed to ensure a crucial property of OPAQUE: even upon compromise of the server, the attacker cannot impersonate the client to the server without first running an exhaustive dictionary attack. Another essential requirement from AKE protocols for use in OPAQUE is to provide forward secrecy (against active attackers).

### 10.3. Related Protocols

Despite the existence of multiple designs for (PKI-free) aPAKE protocols, none of these protocols are secure against pre-computation attacks. This includes protocols that have recent analyses in the UC model such as AuCPace [[AuCPace](#)] and SPAKE2+ [[SPAKE2plus](#)]. In particular, none of these protocols can use the standard technique against pre-computation that combines secret random values ("salt") into the one-way password mappings. Either these protocols do not use a salt at all or, if they do, they transmit the salt from server to client in the clear, hence losing the secrecy of the salt and its defense against pre-computation.

We note that as shown in [[JKX18](#)], these protocols, and any aPAKE in the model from [[GMR06](#)], can be converted into an aPAKE secure against pre-computation attacks at the expense of an additional OPRF execution.

Beyond AuCPace and SPAKE2+, the most widely deployed PKI-free aPAKE is SRP [[RFC2945](#)], which is vulnerable to pre-computation attacks, lacks proof of security, and is less efficient than OPAQUE. Moreover, SRP requires a ring as it mixes addition and multiplication operations, and thus does not work over standard

elliptic curves. OPAQUE is therefore a suitable replacement for applications that use SRP.

#### 10.4. Identities

AKE protocols generate keys that need to be uniquely and verifiably bound to a pair of identities. In the case of OPAQUE, those identities correspond to `client_identity` and `server_identity`. Thus, it is essential for the parties to agree on such identities, including an agreed bit representation of these identities as needed.

Applications may have different policies about how and when identities are determined. A natural approach is to tie `client_identity` to the identity the server uses to fetch the envelope (hence determined during password registration) and to tie `server_identity` to the server identity used by the client to initiate an offline password registration or online authenticated key exchange session. `server_identity` and `client_identity` can also be part of the envelope or be tied to the parties' public keys. In principle, identities may change across different sessions as long as there is a policy that can establish if the identity is acceptable or not to the peer. However, we note that the public keys of both the server and the client must always be those defined at the time of password registration.

The client identity (`client_identity`) and server identity (`server_identity`) are optional parameters that are left to the application to designate as aliases for the client and server. If the application layer does not supply values for these parameters, then they will be omitted from the creation of the envelope during the registration stage. Furthermore, they will be substituted with `client_identity = client_public_key` and `server_identity = server_public_key` during the authenticated key exchange stage.

The advantage of supplying a custom `client_identity` and `server_identity` (instead of simply relying on a fallback to `client_public_key` and `server_public_key`) is that the client can then ensure that any mappings between `client_identity` and `client_public_key` (and `server_identity` and `server_public_key`) are protected by the authentication from the envelope. Then, the client can verify that the `client_identity` and `server_identity` contained in its envelope match the `client_identity` and `server_identity` supplied by the server.

However, if this extra layer of verification is unnecessary for the application, then simply leaving `client_identity` and `server_identity` unspecified (and using `client_public_key` and `server_public_key` instead) is acceptable.

## 10.5. Export Key Usage

The export key can be used (separately from the OPAQUE protocol) to provide confidentiality and integrity to other data which only the client should be able to process. For instance, if the server is expected to maintain any client-side secrets which require a password to access, then this export key can be used to encrypt these secrets so that they remain hidden from the server.

## 10.6. Static Diffie-Hellman Oracles

While one can expect the practical security of the OPRF function (namely, the hardness of computing the function without knowing the key) to be in the order of computing discrete logarithms or solving Diffie-Hellman, Brown and Gallant [[BG04](#)] and Cheon [[Cheon06](#)] show an attack that slightly improves on generic attacks. For typical curves, the attack requires an infeasible number of calls to the OPRF or results in insignificant security loss; see [[OPRF](#)] for more information. For OPAQUE, these attacks are particularly impractical as they translate into an infeasible number of failed authentication attempts directed at individual users.

## 10.7. Input Validation

Both client and server MUST validate the other party's public key(s) used for the execution of OPAQUE. This includes the keys shared during the offline registration phase, as well as any keys shared during the online key agreement phase. The validation procedure varies depending on the type of key. For example, for OPAQUE instantiations using 3DH with P-256, P-384, or P-521 as the underlying group, validation is as specified in Section 5.6.2.3.4 of [[keyagreement](#)]. This includes checking that the coordinates are in the correct range, that the point is on the curve, and that the point is not the point at infinity. Additionally, validation MUST ensure the Diffie-Hellman shared secret is not the point at infinity.

## 10.8. OPRF Key Stretching

Applying a key stretching function to the output of the OPRF greatly increases the cost of an offline attack upon the compromise of the credential file at the server. Applications SHOULD select parameters for the KSF that balance cost and complexity across all possible client implementations and deployments. Note that in OPAQUE, the key stretching function is executed by the client, as opposed to the server in traditional password hashing scenarios. This means that applications must consider a tradeoff between the performance of the protocol on clients (specifically low-end devices) and protection against offline attacks after a server compromise.



## 10.9. Client Enumeration

Client enumeration refers to attacks where the attacker tries to learn extra information about the behavior of clients that have registered with the server. There are two types of attacks we consider:

1) An attacker tries to learn whether a given client identity is registered with a server, and 2) An attacker tries to learn whether a given client identity has recently completed registration, re-registered (e.g. after a password change), or changed its identity.

OPAQUE prevents these attacks during the authentication flow. The first is prevented by requiring servers to act with unregistered client identities in a way that is indistinguishable from their behavior with existing registered clients. Servers do this by simulating a fake `CredentialResponse` as specified in [Section 6.3.2.2](#) for unregistered users, and also encrypting `CredentialResponse` using a masking key. In this way, real and fake `CredentialResponse` messages are indistinguishable from one another. Implementations must also take care to avoid side-channel leakage (e.g., timing attacks) from helping differentiate these operations from a regular server response. Note that this may introduce possible abuse vectors since the server's cost of generating a `CredentialResponse` is less than that of the client's cost of generating a `CredentialRequest`. Server implementations may choose to forego the construction of a simulated credential response message for an unregistered client if these client enumeration attacks can be mitigated through other application-specific means or are otherwise not applicable for their threat model.

Preventing the second type of attack requires the server to supply a `credential_identifier` value for a given client identity, consistently between the registration response and credential response; see [Section 5.2.2](#) and [Section 6.3.2.2](#). Note that `credential_identifier` can be set to `client_identity` for simplicity.

In the event of a server compromise that results in a re-registration of credentials for all compromised clients, the `opr_f_seed` value MUST be resampled, resulting in a change in the `opr_f_key` value for each client. Although this change can be detected by an adversary, it is only leaked upon password rotation after the exposure of the credential files, and equally affects all registered clients.

Finally, applications must use the same key recovery mechanism when using this prevention throughout their lifecycle. The envelope size may vary between mechanisms, so a switch could then be detected.

OPAQUE does not prevent either type of attack during the registration flow. Servers necessarily react differently during the registration flow between registered and unregistered clients. This allows an attacker to use the server's response during registration as an oracle for whether a given client identity is registered. Applications should mitigate against this type of attack by rate limiting or otherwise restricting the registration flow.

#### **10.10. Protecting the Registration Masking Key**

The user enumeration prevention method described in this documents uses a symmetric encryption key generated by the client on registration that is sent to the server over an authenticated channel, such as one provided by TLS [[RFC8446](#)]. In the event that this channel is compromised, this encryption key could be leaked to an attacker.

One mitigation against this threat is to additionally encrypt the RegistrationRecord sent from client to server at the application layer using public key encryption, e.g., with HPKE [[RFC9180](#)]. However, the details of this mechanism are out of scope of this document.

#### **10.11. Password Salt and Storage Implications**

In OPAQUE, the OPRF key acts as the secret salt value that ensures the infeasibility of pre-computation attacks. No extra salt value is needed. Also, clients never disclose their passwords to the server, even during registration. Note that a corrupted server can run an exhaustive offline dictionary attack to validate guesses for the client's password; this is inevitable in any aPAKE protocol. Furthermore, if the server does not sample this OPRF key with sufficiently high entropy, or if it is not kept hidden from an adversary, then any derivatives from the client's password may also be susceptible to an offline dictionary attack to recover the original password.

Some applications may require learning the client's password for enforcing password rules. Doing so invalidates this important security property of OPAQUE and is NOT RECOMMENDED. Applications should move such checks to the client. Note that limited checks at the server are possible to implement, e.g., detecting repeated passwords.

#### **10.12. AKE Private Key Storage**

Server implementations of OPAQUE do not need access to the raw AKE private key. They only require the ability to compute shared secrets as specified in [Section 6.4.2](#). Thus, applications may store the server AKE private key in a Hardware Security Module (HSM) or

similar. Upon compromise of the OPRF seed and client envelopes, this would prevent an attacker from using this data to mount a server spoofing attack. Supporting implementations need to consider allowing separate AKE and OPRF algorithms in cases where the HSM is incompatible with the OPRF algorithm.

## 11. IANA Considerations

This document makes no IANA requests.

## 12. References

### 12.1. Normative References

[I-D.irtf-cfrg-voprf] Davidson, A., Faz-Hernandez, A., Sullivan, N., and C. A. Wood, "Oblivious Pseudorandom Functions (OPRFs) using Prime-Order Groups", Work in Progress, Internet-Draft, draft-irtf-cfrg-voprf-21, 21 February 2023, <<https://datatracker.ietf.org/doc/html/draft-irtf-cfrg-voprf-21>>.

[OPRF] Davidson, A., Faz-Hernandez, A., Sullivan, N., and C. A. Wood, "Oblivious Pseudorandom Functions (OPRFs) using Prime-Order Groups", Work in Progress, Internet-Draft, draft-irtf-cfrg-voprf-21, 21 February 2023, <<https://datatracker.ietf.org/doc/html/draft-irtf-cfrg-voprf-21>>.

[RFC2104] Krawczyk, H., Bellare, M., and R. Canetti, "HMAC: Keyed-Hashing for Message Authentication", RFC 2104, DOI 10.17487/RFC2104, February 1997, <<https://www.rfc-editor.org/rfc/rfc2104>>.

[RFC2119] Bradner, S., "Key words for use in RFCs to Indicate Requirement Levels", BCP 14, RFC 2119, DOI 10.17487/RFC2119, March 1997, <<https://www.rfc-editor.org/rfc/rfc2119>>.

[RFC4086] Eastlake 3rd, D., Schiller, J., and S. Crocker, "Randomness Requirements for Security", BCP 106, RFC 4086, DOI 10.17487/RFC4086, June 2005, <<https://www.rfc-editor.org/rfc/rfc4086>>.

[RFC8174] Leiba, B., "Ambiguity of Uppercase vs Lowercase in RFC 2119 Key Words", BCP 14, RFC 8174, DOI 10.17487/RFC8174, May 2017, <<https://www.rfc-editor.org/rfc/rfc8174>>.

### 12.2. Informative References

[ARGON2] Biryukov, A., Dinu, D., Khovratovich, D., and S. Josefsson, "Argon2 Memory-Hard Function for Password

Hashing and Proof-of-Work Applications", RFC 9106, DOI 10.17487/RFC9106, September 2021, <<https://www.rfc-editor.org/rfc/rfc9106>>.

- [AuCPace] Haase, B. and B. Labrique, "AuCPace: Efficient verifier-based PAKE protocol tailored for the IIoT", <http://eprint.iacr.org/2018/286> , 2018.
- [BG04] Brown, D. and R. Galant, "The static Diffie-Hellman problem", <http://eprint.iacr.org/2004/306> , 2004.
- [Boyen09] Boyen, X., "HPAKE: Password Authentication Secure against Cross-Site User Impersonation", Cryptology and Network Security (CANS) , 2009.
- [Canetti01] Canetti, R., "Universally composable security: A new paradigm for cryptographic protocols", IEEE Symposium on Foundations of Computer Science (FOCS) , 2001.
- [Cheon06] Cheon, J. H., "Security analysis of the strong Diffie-Hellman problem", Eurocrypt 2006 , 2006.
- [Curve25519] Langley, A., Hamburg, M., and S. Turner, "Elliptic Curves for Security", RFC 7748, DOI 10.17487/RFC7748, January 2016, <<https://www.rfc-editor.org/rfc/rfc7748>>.
- [FIPS202] National Institute of Standards and Technology (NIST), "SHA-3 Standard: Permutation-Based Hash and Extendable-Output Functions", August 2015, <<https://nvlpubs.nist.gov/nistpubs/FIPS/NIST.FIPS.202.pdf>>.
- [FK00] Ford, W. and B. S. Kaliski, Jr, "Server-assisted generation of a strong secret from a password", WETICE , 2000.
- [GMR06] Gentry, C., MacKenzie, P., and Z. Ramzan, "A method for making password-based key exchange resilient to server compromise", CRYPTO , 2006.
- [HMQV] Krawczyk, H., "HMQV: A high-performance secure Diffie-Hellman protocol", CRYPTO , 2005.
- [I-D.irtf-cfrg-hash-to-curve] Faz-Hernandez, A., Scott, S., Sullivan, N., Wahby, R. S., and C. A. Wood, "Hashing to Elliptic Curves", Work in Progress, Internet-Draft, draft-irtf-cfrg-hash-to-curve-16, 15 June 2022, <<https://>

[datatracker.ietf.org/doc/html/draft-irtf-cfrg-hash-to-curve-16](https://datatracker.ietf.org/doc/html/draft-irtf-cfrg-hash-to-curve-16)>.

[I-D.krawczyk-cfrg-opaque-03] "The OPAQUE Asymmetric PAKE Protocol", n.d., <<https://datatracker.ietf.org/doc/html/draft-krawczyk-cfrg-opaque-03>>.

[JKKX16] Jarecki, S., Kiayias, A., Krawczyk, H., and J. Xu, "Highly-efficient and composable password-protected secret sharing (or: how to protect your bitcoin wallet online)", IEEE European Symposium on Security and Privacy , 2016.

[JKX18] Jarecki, S., Krawczyk, H., and J. Xu, "OPAQUE: An Asymmetric PAKE Protocol Secure Against Pre-Computation Attacks", Eurocrypt , 2018.

[keyagreement] Barker, E., Chen, L., Roginsky, A., Vassilev, A., and R. Davis, "Recommendation for pair-wise key-establishment schemes using discrete logarithm cryptography", National Institute of Standards and Technology report, DOI 10.6028/nist.sp.800-56ar3, April 2018, <<https://doi.org/10.6028/nist.sp.800-56ar3>>.

[LGR20] Len, J., Grubbs, P., and T. Ristenpart, "Partitioning Oracle Attacks", n.d., <<https://eprint.iacr.org/2020/1491.pdf>>.

[NISTCurves] "Digital Signature Standard (DSS)", National Institute of Standards and Technology report, DOI 10.6028/nist.fips.186-4, July 2013, <<https://doi.org/10.6028/nist.fips.186-4>>.

[PAKE-Selection] "CFRG PAKE selection process repository", n.d., <<https://github.com/cfrg/pake-selection>>.

[PBKDF2] Kaliski, B., "PKCS #5: Password-Based Cryptography Specification Version 2.0", RFC 2898, DOI 10.17487/RFC2898, September 2000, <<https://www.rfc-editor.org/rfc/rfc2898>>.

[RFC2945] Wu, T., "The SRP Authentication and Key Exchange System", RFC 2945, DOI 10.17487/RFC2945, September 2000, <<https://www.rfc-editor.org/rfc/rfc2945>>.

[RFC5869] Krawczyk, H. and P. Eronen, "HMAC-based Extract-and-Expand Key Derivation Function (HKDF)", RFC 5869, DOI 10.17487/RFC5869, May 2010, <<https://www.rfc-editor.org/rfc/rfc5869>>.

- [RFC8017]** Moriarty, K., Ed., Kaliski, B., Jonsson, J., and A. Rusch, "PKCS #1: RSA Cryptography Specifications Version 2.2", RFC 8017, DOI 10.17487/RFC8017, November 2016, <<https://www.rfc-editor.org/rfc/rfc8017>>.
- [RFC8125]** Schmidt, J., "Requirements for Password-Authenticated Key Agreement (PAKE) Schemes", RFC 8125, DOI 10.17487/RFC8125, April 2017, <<https://www.rfc-editor.org/rfc/rfc8125>>.
- [RFC8446]** Rescorla, E., "The Transport Layer Security (TLS) Protocol Version 1.3", RFC 8446, DOI 10.17487/RFC8446, August 2018, <<https://www.rfc-editor.org/rfc/rfc8446>>.
- [RFC9180]** Barnes, R., Bhargavan, K., Lipp, B., and C. Wood, "Hybrid Public Key Encryption", RFC 9180, DOI 10.17487/RFC9180, February 2022, <<https://www.rfc-editor.org/rfc/rfc9180>>.
- [RISTRETTO]** de Valence, H., Grigg, J., Hamburg, M., Lovecruft, I., Tankersley, G., and F. Valsorda, "The ristretto255 and decaf448 Groups", Work in Progress, Internet-Draft, draft-irtf-cfrg-ristretto255-decaf448-07, 3 April 2023, <<https://datatracker.ietf.org/doc/html/draft-irtf-cfrg-ristretto255-decaf448-07>>.
- [SCRYPT]** Percival, C. and S. Josefsson, "The scrypt Password-Based Key Derivation Function", RFC 7914, DOI 10.17487/RFC7914, August 2016, <<https://www.rfc-editor.org/rfc/rfc7914>>.
- [SPAKE2plus]** Shoup, V., "Security Analysis of SPAKE2+", <http://eprint.iacr.org/2020/313> , 2020.
- [TOPPSS]** Jarecki, S., Kiayias, A., Krawczyk, H., and J. Xu, "TOPPSS: Cost-minimal Password-Protected Secret Sharing based on Threshold OPRF", Applied Cryptology and Network Security - ACNS 2017 , 2017.
- [WhatsAppE2E]** WhatsApp, "Security of End-to-End Encrypted Backups", n.d., <[https://www.whatsapp.com/security/WhatsApp\\_Security\\_Encrypted\\_Backups\\_Whitepaper.pdf](https://www.whatsapp.com/security/WhatsApp_Security_Encrypted_Backups_Whitepaper.pdf)>.
- [\_3DH]** "Simplifying OTR deniability", <https://signal.org/blog/simplifying-otr-deniability> , 2016.

## Appendix A. Acknowledgments

The OPAQUE protocol and its analysis is the joint work of the author with Stanislaw Jarecki and Jiayu Xu. We are indebted to the OPAQUE reviewers during CFRG's aPAKE selection process, particularly Julia

Hesse and Bjorn Tackmann. This draft has benefited from comments by multiple people. Special thanks to Richard Barnes, Dan Brown, Eric Crockett, Paul Grubbs, Fredrik Kuivinen, Payman Mohassel, Jason Resch, Greg Rubin, and Nick Sullivan.

## Appendix B. Alternate Key Recovery Mechanisms

Client authentication material can be stored and retrieved using different key recovery mechanisms. Any key recovery mechanism that encrypts data in the envelope MUST use an authenticated encryption scheme with random key-robustness (or key-committing). Deviating from the key-robustness requirement may open the protocol to attacks, e.g., [[LGR20](#)]. This specification enforces this property by using a MAC over the envelope contents.

We remark that `export_key` for authentication or encryption requires no special properties from the authentication or encryption schemes as long as `export_key` is used only after authentication material is successfully recovered, i.e., after the MAC in `RecoverCredentials` passes verification.

## Appendix C. Alternate AKE Instantiations

It is possible to instantiate OPAQUE with other AKEs, such as HMQV [[HMQV](#)] and SIGMA-I. HMQV is similar to 3DH but varies in its key schedule. SIGMA-I uses digital signatures rather than static DH keys for authentication. Specification of these instantiations is left to future documents. A sketch of how these instantiations might change is included in the next subsection for posterity.

OPAQUE may also be instantiated with any post-quantum (PQ) AKE protocol that has the message flow above and security properties (KCI resistance and forward secrecy) outlined in [Section 10](#). Note that such an instantiation is not quantum-safe unless the OPRF is quantum-safe. However, an OPAQUE instantiation where the AKE is quantum-safe, but the OPRF is not, would still ensure the confidentiality and integrity of application data encrypted under `session_key` (or a key derived from it) with a quantum-safe encryption function.

### C.1. HMQV Instantiation Sketch

An HMQV instantiation would work similar to OPAQUE-3DH, differing primarily in the key schedule [[HMQV](#)]. First, the key schedule preamble value would use a different constant prefix -- "HMQV" instead of "3DH" -- as shown below.

```
preamble = concat("HMQV",
                  I2OSP(len(client_identity), 2), client_identity,
                  KE1,
                  I2OSP(len(server_identity), 2), server_identity,
                  KE2.credential_response,
                  KE2.auth_response.server_nonce,
                  KE2.auth_response.server_public_keyshare)
```

Second, the IKM derivation would change. Assuming HMQV is instantiated with a cyclic group of prime order  $p$  with bit length  $L$ , clients would compute IKM as follows:

$$u' = (eskU + u \cdot skU) \bmod p$$

$$IKM = (epkS \cdot pkS^s)^{u'}$$

Likewise, servers would compute IKM as follows:

$$s' = (eskS + s \cdot skS) \bmod p$$

$$IKM = (epkU \cdot pkU^u)^{s'}$$

In both cases,  $u$  would be computed as follows:

```
hashInput = concat(I2OSP(len(epkU), 2), epkU,
                  I2OSP(len(info), 2), info,
                  I2OSP(len("client"), 2), "client")
u = Hash(hashInput) mod L
```

Likewise,  $s$  would be computed as follows:

```
hashInput = concat(I2OSP(len(epkS), 2), epkS,
                  I2OSP(len(info), 2), info,
                  I2OSP(len("server"), 2), "server")
s = Hash(hashInput) mod L
```

Hash is the same hash function used in the main OPAQUE protocol for key derivation. Its output length (in bits) must be at least  $L$ .

## C.2. SIGMA-I Instantiation Sketch

A SIGMA-I instantiation differs more drastically from OPAQUE-3DH since authentication uses digital signatures instead of Diffie-Hellman. In particular, both KE2 and KE3 would carry a digital signature, computed using the server and client private keys established during registration, respectively, as well as a MAC, where the MAC is computed as in OPAQUE-3DH.

The key schedule would also change. Specifically, the key schedule preamble value would use a different constant prefix -- "SIGMA-I" instead of "3DH" -- and the IKM computation would use only the ephemeral public keys exchanged between client and server.



## Appendix D. Test Vectors

This section contains real and fake test vectors for the OPAQUE-3DH specification. Each real test vector in [Appendix D.1](#) specifies the configuration information, protocol inputs, intermediate values computed during registration and authentication, and protocol outputs.

Similarly, each fake test vector in [Appendix D.2](#) specifies the configuration information, protocol inputs, and protocol outputs computed during the authentication of an unknown or unregistered user. Note that `masking_key`, `client_private_key`, and `client_public_key` are used as additional inputs as described in [Section 6.3.2.2](#). `client_public_key` is used as the fake record's public key, and `masking_key` for the fake record's masking key parameter.

All values are encoded in hexadecimal strings. The configuration information includes the (OPRF, Hash, KSF, KDF, MAC, Group, Context) tuple, where the Group matches that which is used in the OPRF. These test vectors were generated using draft-21 of [\[OPRF\]](#). The KSF used for each test vector is the identity function (denoted Identity), which returns as output the input message supplied to the function without any modification, i.e., `msg = Stretch(msg)`.

### D.1. Real Test Vectors

#### D.1.1. OPAQUE-3DH Real Test Vector 1

##### D.1.1.1. Configuration

OPRF: ristretto255-SHA512  
Hash: SHA512  
KSF: Identity  
KDF: HKDF-SHA512  
MAC: HMAC-SHA512  
Group: ristretto255  
Context: 4f50415155452d504f43  
Nh: 64  
Npk: 32  
Nsk: 32  
Nm: 64  
Nx: 64  
Nok: 32

#### D.1.1.2. Input Values

opr\_f\_seed: f433d0227b0b9dd54f7c4422b600e764e47fb503f1f9a0f0a47c6606b054a7fdc65347f1a08f277e22358bbabe26f823fca82c7848e9a75661f4ec5d5c1989ef

credential\_identifier: 31323334

password: 436f7272656374486f72736542617474657279537461706c65

envelope\_nonce: ac13171b2f17bc2c74997f0fce1e1f35bec6b91fe2e12dbd323d23ba7a38dfec

masking\_nonce: 38fe59af0df2c79f57b8780278f5ae47355fe1f817119041951c80f612fd6d

server\_private\_key: 47451a85372f8b3537e249d7b54188091fb18edde78094b43e2ba42b5eb89f0d

server\_public\_key: b2fe7af9f48cc502d016729d2fe25cdd433f2c4bc904660b2a382c9b79df1a78

server\_nonce: 71cd9960ecef2fe0d0f7494986fa3d8b2bb01963537e60efb13981e138e3d4a1

client\_nonce: da7e07376d6d6f034cfa9bb537d11b8c6b4238c334333d1f0aebb380cae6a6cc

client\_keyshare\_seed: 82850a697b42a505f5b68fcdafce8c31f0af2b581f063cf1091933541936304b

server\_keyshare\_seed: 05a4f54206eef1ba2f615bc0aa285cb22f26d1153b5b40a1e85ff80da12f982f

blind\_registration: 76cfbfe758db884bebb33582331ba9f159720ca8784a2a070a265d9c2d6abe01

blind\_login: 6ecc102d2e7a7cf49617aad7bbe188556792d4acd60a1a8a8d2b65d4b0790308

### D.1.1.3. Intermediate Values

client\_public\_key: 76a845464c68a5d2f7e442436bb1424953b17d3e2e289ccbac  
cafb57ac5c3675  
auth\_key: 6cd32316f18d72a9a927a83199fa030663a38ce0c11fbaef82aa9003773  
0494fc555c4d49506284516edd1628c27965b7555a4ebfed2223199f6c67966dde822  
randomized\_password: aac48c25ab036e30750839d31d6e73007344cb1155289fb7  
d329beb932e9adeea73d5d5c22a0ce1952f8aba6d66007615cd1698d4ac85ef1fcf15  
0031d1435d9  
envelope: ac13171b2f17bc2c74997f0fce1e1f35bec6b91fe2e12dbd323d23ba7a3  
8dfec634b0f5b96109c198a8027da51854c35bee90d1e1c781806d07d49b76de6a28b  
8d9e9b6c93b9f8b64d16ddd9c5bfb5fea48ee8fd2f75012a8b308605cdd8ba5  
handshake\_secret: 7032215dfe771d18168271a8dd8c220098f6cfa6e63ccec7770  
61f6e6b74acee646d655454ee28e1a089c2bcdf0659999d2b60782290b2a5a067d663  
09ea1e46  
server\_mac\_key: 4d9c9d82092b7a932d8ab42a9acfc7e08ce84c94eaa309c32321d  
f90c5f93b093bdd8df15f573ec4d8952a1616d15127e270d97f9c638a6613187966e2  
fa031a  
client\_mac\_key: 7ee640a0a860b1751d67f5994a3db290a0afd928434d65c166f34  
c73a245a7ab75d8ba15683f0701034f87d5c047f5082e138880fb37bec387c4863ba9  
1c9750  
opr\_key: 5d4c6a8b7c7138182afb4345d1fae6a9f18a1744afbcc3854f8f5a2b4b4  
c6d05

#### D.1.1.4. Output Values

registration\_request: 5059ff249eb1551b7ce4991f3336205bde44a105a032e747d21bf382e75f7a71

registration\_response: 7408a268083e03abc7097fc05b587834539065e86fb0c7b6342fcf5e01e5b019b2fe7af9f48cc502d016729d2fe25cdd433f2c4bc904660b2a382c9b79df1a78

registration\_upload: 76a845464c68a5d2f7e442436bb1424953b17d3e2e289ccbaccafb57ac5c36751ac5844383c7708077dea41cbefe2fa15724f449e535dd7dd562e66f5ecfb95864eadddec9db5874959905117dad40a4524111849799281fefe3c51fa82785c5ac13171b2f17bc2c74997f0fce1e1f35bec6b91fe2e12dbd323d23ba7a38dfec634b0f5b96109c198a8027da51854c35bee90d1e1c781806d07d49b76de6a28b8d9e9b6c93b9f8b64d16ddd9c5bfb5fea48ee8fd2f75012a8b308605cdd8ba5

KE1: c4dedb0baed5d965d6f250fbe554cd45cba5dfcce3ce836e4aee778aa3cd44dda7e07376d6d6f034cfa9bb537d11b8c6b4238c334333d1f0aebb380cae6a6cc6e29bee50701498605b2c085d7b241ca15ba5c32027dd21ba420b94ce60da326

KE2: 7e308140890bcde30cbcea28b01ea1ecfbd077cff62c4def8efa075aabcb47138fe59af0df2c79f57b8780278f5ae47355fe1f817119041951c80f612fdcf6dd6ec60bcdb26dc455ddf3e718f1020490c192d70dfc7e403981179d8073d1146a4f9aa1ced4e4cd984c657eb3b54ced3848326f70331953d91b02535af44d9fedc80188ca46743c52786e0382f95ad85c08f6afcd1ccfbff95e2bdeb015b166c6b20b92f832cc6df01e0b86a7efd92c1c804ff865781fa93f2f20b446c8371b671cd9960ecf2fe0d0f7494986fa3d8b2bb01963537e60efb13981e138e3d4a1c4f62198a9d6fa9170c42c3c71f1971b29eb1d5d0bd733e40816c91f7912cc4aa47faa9314446793501f622f63a84db1bf5b346d13f48d2f1a93902475e625fac1d0dea3ad473c0db2de94098b7142c5099758f8568c98495d409b5a601b3e59

KE3: 2a5e2036d390f4c79e6d5a15ffa8ede52b8da7ff07b9a016a201f22f3420aaa33326ba6fe19b947f23cfbb8a2534b488cca31e35a2521e1ab7a49e299c82a07b

export\_key: 1ef15b4fa99e8a852412450ab78713aad30d21fa6966c9b8c9fb3262a970dc62950d4dd4ed62598229b1b72794fc0335199d9f7fcc6eaedde92cc04870e63f16

session\_key: db06b9d5d2c6034db948f58da84a6c5bdeaab7037adc338d7fada3573c5dbcfe649c4f172615f97f63da944bee601abb69121203f0bf56cb7742efdd1afbb21a

## D.1.2. OPAQUE-3DH Real Test Vector 2

### D.1.2.1. Configuration

OPRF: ristretto255-SHA512  
Hash: SHA512  
KSF: Identity  
KDF: HKDF-SHA512  
MAC: HMAC-SHA512  
Group: ristretto255  
Context: 4f50415155452d504f43  
Nh: 64  
Npk: 32  
Nsk: 32  
Nm: 64  
Nx: 64  
Nok: 32

### D.1.2.2. Input Values

client\_identity: 616c696365  
server\_identity: 626f62  
oprseed: f433d0227b0b9dd54f7c4422b600e764e47fb503f1f9a0f0a47c6606b054a7fdc65347f1a08f277e22358bbabe26f823fca82c7848e9a75661f4ec5d5c1989ef  
credential\_identifier: 31323334  
password: 436f7272656374486f72736542617474657279537461706c65  
envelope\_nonce: ac13171b2f17bc2c74997f0fce1e1f35bec6b91fe2e12dbd323d23ba7a38dfec  
masking\_nonce: 38fe59af0df2c79f57b8780278f5ae47355fe1f817119041951c80f612fd6c6d  
server\_private\_key: 47451a85372f8b3537e249d7b54188091fb18edde78094b43e2ba42b5eb89f0d  
server\_public\_key: b2fe7af9f48cc502d016729d2fe25cdd433f2c4bc904660b2a382c9b79df1a78  
server\_nonce: 71cd9960ecef2fe0d0f7494986fa3d8b2bb01963537e60efb13981e138e3d4a1  
client\_nonce: da7e07376d6d6f034cfa9bb537d11b8c6b4238c334333d1f0aebb380cae6a6cc  
client\_keyshare\_seed: 82850a697b42a505f5b68fcdafce8c31f0af2b581f063cf1091933541936304b  
server\_keyshare\_seed: 05a4f54206eef1ba2f615bc0aa285cb22f26d1153b5b40a1e85ff80da12f982f  
blind\_registration: 76cfbfe758db884bebb33582331ba9f159720ca8784a2a070a265d9c2d6abe01  
blind\_login: 6ecc102d2e7a7cf49617aad7bbe188556792d4acd60a1a8a8d2b65d4b0790308

### D.1.2.3. Intermediate Values

client\_public\_key: 76a845464c68a5d2f7e442436bb1424953b17d3e2e289ccbac  
cafb57ac5c3675  
auth\_key: 6cd32316f18d72a9a927a83199fa030663a38ce0c11fbaef82aa9003773  
0494fc555c4d49506284516edd1628c27965b7555a4ebfed2223199f6c67966dde822  
randomized\_password: aac48c25ab036e30750839d31d6e73007344cb1155289fb7  
d329beb932e9adeea73d5d5c22a0ce1952f8aba6d66007615cd1698d4ac85ef1fcf15  
0031d1435d9  
envelope: ac13171b2f17bc2c74997f0fce1e1f35bec6b91fe2e12dbd323d23ba7a3  
8dfec1ac902dc5589e9a5f0de56ad685ea8486210ef41449cd4d8712828913c5d2b68  
0b2b3af4a26c765cff329bfb66d38ecf1d6cfa9e7a73c222c6efe0d9520f7d7c  
handshake\_secret: ce0bce1d698443e07b85551d38654ddf2d9fa3791cab39c0ceb  
84a87408d3189da191d5f28d994178c794a363c8b2431d66de8e6d048bf1afc09588a  
1790017d  
server\_mac\_key: 87212e945d15bd1ff230240795a0b09e1e1d42d7ce8b78f8e4bf5  
6a60288ed64d8cd9e13a27537d3d06323fee990d994653809466a47b0786885f933c6  
9f1c68  
client\_mac\_key: c0f37b7c91f2d16b5466e55d27dbdf1f6727c2ee830b1bcd03cf4  
7c4fc3b5520a166a0a21e9f12a4880555272153c77b97b3e534c327aea1b60e8b5d18  
a14b9a  
opr\_key: 5d4c6a8b7c7138182afb4345d1fae6a9f18a1744afbcc3854f8f5a2b4b4  
c6d05

#### D.1.2.4. Output Values

registration\_request: 5059ff249eb1551b7ce4991f3336205bde44a105a032e747d21bf382e75f7a71

registration\_response: 7408a268083e03abc7097fc05b587834539065e86fb0c7b6342fcf5e01e5b019b2fe7af9f48cc502d016729d2fe25cdd433f2c4bc904660b2a382c9b79df1a78

registration\_upload: 76a845464c68a5d2f7e442436bb1424953b17d3e2e289ccbaccafb57ac5c36751ac5844383c7708077dea41cbefe2fa15724f449e535dd7dd562e66f5ecfb95864eadddec9db5874959905117dad40a4524111849799281fefe3c51fa82785c5ac13171b2f17bc2c74997f0fce1e1f35bec6b91fe2e12dbd323d23ba7a38dfec1ac902dc5589e9a5f0de56ad685ea8486210ef41449cd4d8712828913c5d2b680b2b3af4a26c765cff329bfb66d38ecf1d6cfa9e7a73c222c6efe0d9520f7d7c

KE1: c4dedb0baed5d965d6f250fbe554cd45cba5dfcce3ce836e4aee778aa3cd44dda7e07376d6d6f034cfa9bb537d11b8c6b4238c334333d1f0aebb380cae6a6cc6e29bee50701498605b2c085d7b241ca15ba5c32027dd21ba420b94ce60da326

KE2: 7e308140890bcde30cbcea28b01ea1ecfbd077cff62c4def8efa075aabcb7138fe59af0df2c79f57b8780278f5ae47355fe1f817119041951c80f612fdcf6dd6ec60bcdb26dc455ddf3e718f1020490c192d70dfc7e403981179d8073d1146a4f9aa1ced4e4cd984c657eb3b54ced3848326f70331953d91b02535af44d9fea502150b67fe36795dd8914f164e49f81c7688a38928372134b7dccc50e09f8fed9518b7b2f94835b3c4fe4c8475e7513f20eb97ff0568a39caee3fd6251876f71cd9960ecf2fe0d0f7494986fa3d8b2bb01963537e60efb13981e138e3d4a1c4f62198a9d6fa9170c42c3c71f1971b29eb1d5d0bd733e40816c91f7912cc4a376718206a20e4941b5423a1fb1603b8452d3a2071b37132c9f9324b1cf160e10d40469f54d5f1c4a25f1ed1bb74dd5b87b27ae39a8b53e22382f2e45f156d74

KE3: d015536b2ecafb1a87f6ed057982cf73e75ec56a774549f672d59c0c4b7e3762e0c6d8a2382ae855c8ef5240bbe1e404b8c455c03dc1a716d459f67828f0574f

export\_key: 1ef15b4fa99e8a852412450ab78713aad30d21fa6966c9b8c9fb3262a970dc62950d4dd4ed62598229b1b72794fc0335199d9f7fcc6eaedde92cc04870e63f16

session\_key: 494a13c9d02c5af791ce743e8c08abd0be287e4ddd32a1dcc93072a63b4109d67ae53fa3ae2d1333501a40dfbab630235688f3b000828f7084e5f4a6b3a1048d

### **D.1.3. OPAQUE-3DH Real Test Vector 3**

#### **D.1.3.1. Configuration**

OPRF: ristretto255-SHA512  
Hash: SHA512  
KSF: Identity  
KDF: HKDF-SHA512  
MAC: HMAC-SHA512  
Group: curve25519  
Context: 4f50415155452d504f43  
Nh: 64  
Npk: 32  
Nsk: 32  
Nm: 64  
Nx: 64  
Nok: 32

#### **D.1.3.2. Input Values**

opr\_f\_seed: a78342ab84d3d30f08d5a9630c79bf311c31ed7f85d9d4959bf492ec67  
a0eec8a67dfbf4497248eebd49e878aab173e5e4ff76354288fdd53e949a5f7c9f7f1  
b  
credential\_identifier: 31323334  
password: 436f7272656374486f72736542617474657279537461706c65  
envelope\_nonce: 40d6b67fdd7da7c49894750754514dbd2070a407166bd2a5237cc  
a9bf44d6e0b  
masking\_nonce: 38fe59af0df2c79f57b8780278f5ae47355fe1f817119041951c80  
f612fd6c6d  
server\_private\_key: c06139381df63bfc91c850db0b9cfbec7a62e86d80040a41a  
a7725bf0e79d564  
server\_public\_key: a41e28269b4e97a66468cc00c5a57753e192e1527669897706  
88aa90486ef031  
server\_nonce: 71cd9960ecef2fe0d0f7494986fa3d8b2bb01963537e60efb13981e  
138e3d4a1  
client\_nonce: da7e07376d6d6f034cfa9bb537d11b8c6b4238c334333d1f0aebb38  
0cae6a6cc  
client\_keyshare\_seed: 82850a697b42a505f5b68fcdafce8c31f0af2b581f063cf  
1091933541936304b  
server\_keyshare\_seed: 05a4f54206eef1ba2f615bc0aa285cb22f26d1153b5b40a  
1e85ff80da12f982f  
blind\_registration: c575731ffe1cb0ca5ba63b42c4699767b8b9ab78ba39316ee  
04baddb2034a70a  
blind\_login: 6ecc102d2e7a7cf49617aad7bbe188556792d4acd60a1a8a8d2b65d4  
b0790308



### D.1.3.3. Intermediate Values

client\_public\_key: 0936ea94ab030ec332e29050d266c520e916731a052d05ced7  
e0cfe751142b48  
auth\_key: 7e880ab484f750e80e6f839d975aff476070ce65066d85ea62523d1d576  
4739d91307fac47186a4ab935e6a5c7f70cb47faa9473311947502c022cc67ae9440c  
randomized\_password: 3a602c295a9c323d9362fe286f104567ed6862b25dbe30fa  
da844f19e41cf40047424b7118e15dc2c1a815a70fea5c8de6c30aa61440cd4b4b5e8  
f3963fbb2e1  
envelope: 40d6b67fdd7da7c49894750754514dbd2070a407166bd2a5237cca9bf44  
d6e0b20c1e81fef28e92e897ca8287d49a55075b47c3988ff0fff367d79a3e350ccac  
150b4a3ff48b4770c8e84e437b3d4e68d2b95833f7788f7eb93fa6a8afb85ecb  
handshake\_secret: 6936d2b78f13d865997dd37c42c741dfe4c0297199e55d7f889  
1fa4771ed2357e990b44faec69733c607b7541442b5f27ea01513b4f0b84545e0fff75  
81ea7764  
server\_mac\_key: 62a11be878ecfcbd7c8875e86a0f479befcb4b1742480c9ac2d2a  
5fa8d9e96c3bf60edb953ba15e32dc3e2cba60029c0c61481fdc7a80946f596b77fff  
6b18ee  
client\_mac\_key: e646055bf0a395c6c7c61078dabe0f0026ec6ba079ddb70f11ec9  
ba41e5ff70e37a87d8fbeca11d7dc22e2aacf2828de6e1d776b451fa1bd4419b0a6b5  
9cc353  
opr\_key: 62ef7f7d9506a14600c34f642aaf6ef8019cc82a6755db4fded5248ea14  
6030a

#### D.1.3.4. Output Values

registration\_request: 26f3dbfd76b8e5f85b4da604f42889a7d4b1bc919f655381a67de02c59fd5436

registration\_response: 506e8f1b89c098fb89b5b6210a05f7898cafdaea221761e8d5272fc39e0f9f08a41e28269b4e97a66468cc00c5a57753e192e152766989770688aa90486ef031

registration\_upload: 0936ea94ab030ec332e29050d266c520e916731a052d05ced7e0cfe751142b486d23c6ed818882f9bdfdcf91389fcbc0b7a3faf92bd0bd6be4a1e7730277b694fc7c6ba327fbe786af18487688e0f7c148bbd54dc2fc80c28e7a976d9ef53c3540d6b67fdd7da7c49894750754514dbd2070a407166bd2a5237cca9bf44d6e0b20c1e81fef28e92e897ca8287d49a55075b47c3988ff0fff367d79a3e350ccac150b4a3fff48b4770c8e84e437b3d4e68d2b95833f7788f7eb93fa6a8afb85ecb

KE1: c4dedb0ba6ed5d965d6f250fbe554cd45cba5dfcce3ce836e4aee778aa3cd44dda7e07376d6d6f034cfa9bb537d11b8c6b4238c334333d1f0aebb380cae6a6cc10a83b9117d3798cb2957fbbdb0268a0d63dbf9d66bde5c00c78affd80026c911

KE2: 9a0e5a1514f62e005ea098b0d8cf6750e358c4389e6add1c52aed9500fa19d0038fe59af0df2c79f57b8780278f5ae47355fe1f817119041951c80f612fdcf6d22cc31127d6f0096755be3c3d2dd6287795c317aeea10c9485bf4f419a786642c19a8f151ceb5e8767d175248c62c017de94057398d28bf0ed00d1b50ee4f812fd9afddf98af8cd58067ca43b0633b6cadd0e9d987f89623fed4d3583bdf6910c425600e90dab3c6b3513188a465461a67f6bbc47aeba808f7f7e2c6d66f5c3271cd9960ecf2fe0d0f7494986fa3d8b2bb01963537e60efb13981e138e3d4a141f55f0bef355cfb34ccd468fdacad75865ee7efef95f4cb6c25d477f720502601bd116f3cb70f03d9cbc25d5606b8c5764a1b9b11b28f2cbbd5630a836f9dbb2e7e8914639bca0fb9c99d58d42dfe3057cfe881491b1d0812948aa4a7a7c7f7

KE3: 93a3c0da12392ad5336962e340b7c44ed445a67d61dae7bc5e2ccf891f6e9fac6596f93350d3d559f7bbb182376a07ec7377e7966b7cc549fb8d0b6fb575f157

export\_key: 9dec51d6d0f6ce7e4345f10961053713b07310cc2e45872f57bbd2fe5070fdf0fb5b77c7ddaa2f3dc5c35132df7417ad7fefe0f690ad266e5a54a21d045c9c38

session\_key: a30c5ad775d0bc9aeb47757cc68a9332cb3acb7fc332ca07ba96d7071847e492c8de3541997f97a605eb9b60cde6feb8dc57322e60ec42ae78c87a2e215e277f

#### **D.1.4. OPAQUE-3DH Real Test Vector 4**

##### **D.1.4.1. Configuration**

OPRF: ristretto255-SHA512  
Hash: SHA512  
KSF: Identity  
KDF: HKDF-SHA512  
MAC: HMAC-SHA512  
Group: curve25519  
Context: 4f50415155452d504f43  
Nh: 64  
Npk: 32  
Nsk: 32  
Nm: 64  
Nx: 64  
Nok: 32

##### **D.1.4.2. Input Values**

client\_identity: 616c696365  
server\_identity: 626f62  
oprff\_seed: a78342ab84d3d30f08d5a9630c79bf311c31ed7f85d9d4959bf492ec67  
a0eec8a67dfbf4497248eebd49e878aab173e5e4ff76354288fdd53e949a5f7c9f7f1  
b  
credential\_identififier: 31323334  
password: 436f7272656374486f72736542617474657279537461706c65  
envelope\_nonce: 40d6b67fdd7da7c49894750754514dbd2070a407166bd2a5237cc  
a9bf44d6e0b  
masking\_nonce: 38fe59af0df2c79f57b8780278f5ae47355fe1f817119041951c80  
f612fd6c6d  
server\_private\_key: c06139381df63bfc91c850db0b9cfbec7a62e86d80040a41a  
a7725bf0e79d564  
server\_public\_key: a41e28269b4e97a66468cc00c5a57753e192e1527669897706  
88aa90486ef031  
server\_nonce: 71cd9960ecef2fe0d0f7494986fa3d8b2bb01963537e60efb13981e  
138e3d4a1  
client\_nonce: da7e07376d6d6f034cfa9bb537d11b8c6b4238c334333d1f0aebb38  
0cae6a6cc  
client\_keyshare\_seed: 82850a697b42a505f5b68fcdafce8c31f0af2b581f063cf  
1091933541936304b  
server\_keyshare\_seed: 05a4f54206eef1ba2f615bc0aa285cb22f26d1153b5b40a  
1e85ff80da12f982f  
blind\_registration: c575731ffe1cb0ca5ba63b42c4699767b8b9ab78ba39316ee  
04baddb2034a70a  
blind\_login: 6ecc102d2e7a7cf49617aad7bbe188556792d4acd60a1a8a8d2b65d4  
b0790308

#### D.1.4.3. Intermediate Values

client\_public\_key: 0936ea94ab030ec332e29050d266c520e916731a052d05ced7e0cfe751142b48  
auth\_key: 7e880ab484f750e80e6f839d975aff476070ce65066d85ea62523d1d5764739d91307fac47186a4ab935e6a5c7f70cb47faa9473311947502c022cc67ae9440c  
randomized\_password: 3a602c295a9c323d9362fe286f104567ed6862b25dbe30fada844f19e41cf40047424b7118e15dc2c1a815a70fea5c8de6c30aa61440cd4b4b5e8f3963fbb2e1  
envelope: 40d6b67fdd7da7c49894750754514dbd2070a407166bd2a5237cca9bf44d6e0bb4c0eab6143959a650c5f6b32acf162b1fbe95bb36c5c4f99df53865c4d3537d69061d80522d772cd0efdbe91f817f6bf7259a56e20b4eb9cbe9443702f4b759  
handshake\_secret: f5b8fa77a67e638114899eca80c3549aa2c8e277a3412bccbe0a7e3943a5798d1e5ede2a847144759b17eb253f2f65efcccf82fe7b5f26e17175713dbe845786  
server\_mac\_key: a8cdc5647342743be8ae6fc51e7105651b16bcb5fe4913834e7c2139dbc06d84c75215e7e84e1785f431c925844eb8c9c0d14959239422368166f41485e7847a  
client\_mac\_key: b326230809ee373101e8b387aa33a865f7afa375f8c3e5a8fb592b2e89e3117ccae85b0440421c75eb38a4ca4bde9355a549179b84748e21a3e378a3eb538e37  
opr\_key: 62ef7f7d9506a14600c34f642aaf6ef8019cc82a6755db4fded5248ea146030a

#### D.1.4.4. Output Values

registration\_request: 26f3dbfd76b8e5f85b4da604f42889a7d4b1bc919f655381a67de02c59fd5436

registration\_response: 506e8f1b89c098fb89b5b6210a05f7898cafdaea221761e8d5272fc39e0f9f08a41e28269b4e97a66468cc00c5a57753e192e152766989770688aa90486ef031

registration\_upload: 0936ea94ab030ec332e29050d266c520e916731a052d05ced7e0cfe751142b486d23c6ed818882f9bdfdcf91389fcbc0b7a3faf92bd0bd6be4a1e7730277b694fc7c6ba327fbe786af18487688e0f7c148bbd54dc2fc80c28e7a976d9ef53c3540d6b67fdd7da7c49894750754514dbd2070a407166bd2a5237cca9bf44d6e0bb4c0eab6143959a650c5f6b32acf162b1fbe95bb36c5c4f99df53865c4d3537d69061d80522d772cd0efdbe91f817f6bf7259a56e20b4eb9cbe9443702f4b759

KE1: c4dedb0baed5d965d6f250fbe554cd45cba5dfcce3ce836e4aee778aa3cd44dda7e07376d6d6f034cfa9bb537d11b8c6b4238c334333d1f0aebb380cae6a6cc10a83b9117d3798cb2957fbdb0268a0d63dbf9d66bde5c00c78affd80026c911

KE2: 9a0e5a1514f62e005ea098b0d8cf6750e358c4389e6add1c52aed9500fa19d0038fe59af0df2c79f57b8780278f5ae47355fe1f817119041951c80f612fdcf6d22cc31127d6f0096755be3c3d2dd6287795c317aeea10c9485bf4f419a786642c19a8f151ceb5e8767d175248c62c017de94057398d28bf0ed00d1b50ee4f812699bfff7663be3c5d59de94d8e7e58817c7da005b39c25d25555c929e1c5cf6c1b82837b1367c839aab56a422c0d97719426a79a16f9869cf852100597b23b5a071cd9960ecf2fe0d0f7494986fa3d8b2bb01963537e60efb13981e138e3d4a141f55f0bef355cfb34ccd468fdacad75865ee7efef95f4cb6c25d477f7205026816ce1eb529f8f3c6cec676d8c08f5ca760c4322016850f329c4a2fb07364768a11a5380564d4cbceae511c873627c22c9ee9f05488278de0fcf646f0825efdd

KE3: f6325cf6a7bd808fca69d54546ef61f2b5ec62fe8b96ca3c9b3e054841ab35ae552bc5d8eea5ec840f56578be2cd2c30b52fa03266a2f4518cf764d9ced467ec

export\_key: 9dec51d6d0f6ce7e4345f10961053713b07310cc2e45872f57bbd2fe5070fdf0fb5b77c7ddaa2f3dc5c35132df7417ad7fefe0f690ad266e5a54a21d045c9c38

session\_key: 867930cba2b9988acfbe8289bffff728f7c799153be737c8a915ed98647a7bc7a7f5f9c03deb797d36eda54de6015683a60e08f34e746e37514c4714d064499f

### **D.1.5. OPAQUE-3DH Real Test Vector 5**

#### **D.1.5.1. Configuration**

OPRF: P256-SHA256  
Hash: SHA256  
KSF: Identity  
KDF: HKDF-SHA256  
MAC: HMAC-SHA256  
Group: P256\_XMD:SHA-256\_SSWU\_RO\_  
Context: 4f50415155452d504f43  
Nh: 32  
Npk: 33  
Nsk: 32  
Nm: 32  
Nx: 32  
Nok: 32

#### **D.1.5.2. Input Values**

oprff\_seed: 62f60b286d20ce4fd1d64809b0021dad6ed5d52a2c8cf27ae6582543a0  
a8dce2  
credential\_identifrier: 31323334  
password: 436f7272656374486f72736542617474657279537461706c65  
envelope\_nonce: a921f2a014513bd8a90e477a629794e89fec12d12206dde662ebd  
cf65670e51f  
masking\_nonce: 38fe59af0df2c79f57b8780278f5ae47355fe1f817119041951c80  
f612fdcf6d  
server\_private\_key: c36139381df63bfc91c850db0b9cfbec7a62e86d80040a41a  
a7725bf0e79d5e5  
server\_public\_key: 035f40ff9cf88aa1f5cd4fe5fd3da9ea65a4923a5594f84fd9  
f2092d6067784874  
server\_nonce: 71cd9960ecef2fe0d0f7494986fa3d8b2bb01963537e60efb13981e  
138e3d4a1  
client\_nonce: ab3d33bde0e93eda72392346a7a73051110674bbf6b1b7ffab8be4f  
91fdaeab1  
client\_keyshare\_seed: 633b875d74d1556d2a2789309972b06db21dfcc4f5ad51d  
7e74d783b7cfab8dc  
server\_keyshare\_seed: 05a4f54206eef1ba2f615bc0aa285cb22f26d1153b5b40a  
1e85ff80da12f982f  
blind\_registration: 411bf1a62d119afe30df682b91a0a33d777972d4f2daa4b34  
ca527d597078153  
blind\_login: c497fddf6056d241e6cf9fb7ac37c384f49b357a221eb0a802c989b9  
942256c1

### D.1.5.3. Intermediate Values

client\_public\_key: 03b218507d978c3db570ca994aaf36695a731ddb2db272c817f79746fc37ae5214  
auth\_key: 5bd4be1602516092dc5078f8d699f5721dc1720a49fb80d8e5c16377abd0987b  
randomized\_password: 06be0a1a51d56557a3adad57ba29c5510565dcd8b5078fa319151b9382258fb0  
envelope: a921f2a014513bd8a90e477a629794e89fec12d12206dde662ebdcf65670e51fad30bbcfc1f8eda0211553ab9aaf26345ad59a128e80188f035fe4924fad67b8  
handshake\_secret: 12f661f08a195208b2558d6c4c9fff5527a6af971087ce9eca800a77ca9c277a  
server\_mac\_key: e07959284f64abd523651d0619d67cd5e026081671400af6282ffbff85949d93  
client\_mac\_key: d6672fd556c0811391bb48177255341979bfd0418c15169a62cb4f18a40a37d6  
opr\_key: 2dfb5cb9aa1476093be74ca0d43e5b02862a05f5d6972614d7433acdc66f7f31

### D.1.5.4. Output Values

registration\_request: 029e949a29cfa0bf7c1287333d2fb3dc586c41aa652f5070d26a5315a1b50229f8  
registration\_response: 0350d3694c00978f00a5ce7cd08a00547e4ab5fb5fc2b2f6717cdaa6c89136efef035f40ff9cf88aa1f5cd4fe5fd3da9ea65a4923a5594f84fd9f2092d6067784874  
registration\_upload: 03b218507d978c3db570ca994aaf36695a731ddb2db272c817f79746fc37ae52147f0ed53532d3ae8e505ecc70d42d2b814b6b0e48156def71ea029148b2803aafa921f2a014513bd8a90e477a629794e89fec12d12206dde662ebdcf65670e51fad30bbcfc1f8eda0211553ab9aaf26345ad59a128e80188f035fe4924fad67b8  
KE1: 037342f0bcb3ecea754c1e67576c86aa90c1de3875f390ad599a26686cdf6e6e07ab3d33bde0e93eda72392346a7a73051110674bbf6b1b7ffab8be4f91fdaeab1022ed3f32f318f81bab80da321fecab3cd9b6eea11a95666dfa6beaab321280b6  
KE2: 0246da9fe4d41d5ba69faa6c509a1d5bafd49a48615a47a8dd4b0823cc1476481138fe59af0df2c79f57b8780278f5ae47355fe1f817119041951c80f612fd6d2f0c547f70deaeca54d878c14c1aa5e1ab405dec833777132eea905c2fbb12504a67dcbe0e66740c76b62c13b04a38a77926e19072953319ec65e41f9bfd2ae26837b6ce688bf9af2542f04eec9ab96a1b9328812dc2f5c89182ed47fead61f09f71cd9960ecef2fe0d0f7494986fa3d8b2bb01963537e60efb13981e138e3d4a103c1701353219b53acf337bf6456a83cefed8f563f1040b65afbf3b65d3bc9a19b037d9b23fea94aa69aff597a63f2e8109064925589923667840390535d331279  
KE3: c1252b9a0af176f5878b8f9b55934c2463ee7226d2b7d97cadfb901ca4a55b8f  
export\_key: c3c9a1b0e33ac84dd83d0b7e8af6794e17e7a3caadff289fbd9dc769a853c64b  
session\_key: 1fc4d7b0d75bb02c36a9b10b563671967e27283c9fe0082fa16cfa94a12151b2

## D.1.6. OPAQUE-3DH Real Test Vector 6

### D.1.6.1. Configuration

OPRF: P256-SHA256  
Hash: SHA256  
KSF: Identity  
KDF: HKDF-SHA256  
MAC: HMAC-SHA256  
Group: P256\_XMD:SHA-256\_SSWU\_RO\_  
Context: 4f50415155452d504f43  
Nh: 32  
Npk: 33  
Nsk: 32  
Nm: 32  
Nx: 32  
Nok: 32

### D.1.6.2. Input Values

client\_identity: 616c696365  
server\_identity: 626f62  
oprseed: 62f60b286d20ce4fd1d64809b0021dad6ed5d52a2c8cf27ae6582543a0a8dce2  
credential\_identifier: 31323334  
password: 436f7272656374486f72736542617474657279537461706c65  
envelope\_nonce: a921f2a014513bd8a90e477a629794e89fec12d12206dde662ebdcf65670e51f  
masking\_nonce: 38fe59af0df2c79f57b8780278f5ae47355fe1f817119041951c80f612fd6c6d  
server\_private\_key: c36139381df63bfc91c850db0b9cfbec7a62e86d80040a41aa7725bf0e79d5e5  
server\_public\_key: 035f40ff9cf88aa1f5cd4fe5fd3da9ea65a4923a5594f84fd9f2092d6067784874  
server\_nonce: 71cd9960ecef2fe0d0f7494986fa3d8b2bb01963537e60efb13981e138e3d4a1  
client\_nonce: ab3d33bde0e93eda72392346a7a73051110674bbf6b1b7ffab8be4f91fdaeab1  
client\_keyshare\_seed: 633b875d74d1556d2a2789309972b06db21dfcc4f5ad51d7e74d783b7cfab8dc  
server\_keyshare\_seed: 05a4f54206eef1ba2f615bc0aa285cb22f26d1153b5b40a1e85ff80da12f982f  
blind\_registration: 411bf1a62d119afe30df682b91a0a33d777972d4f2daa4b34ca527d597078153  
blind\_login: c497fddf6056d241e6cf9fb7ac37c384f49b357a221eb0a802c989b9942256c1



### D.1.6.3. Intermediate Values

client\_public\_key: 03b218507d978c3db570ca994aaf36695a731ddb2db272c817f79746fc37ae5214  
auth\_key: 5bd4be1602516092dc5078f8d699f5721dc1720a49fb80d8e5c16377abd0987b  
randomized\_password: 06be0a1a51d56557a3adad57ba29c5510565dcd8b5078fa319151b9382258fb0  
envelope: a921f2a014513bd8a90e477a629794e89fec12d12206dde662ebdcf65670e51f4d7773a36a208a866301dbb2858e40dc5638017527cf91aef32d3848eebe0971  
handshake\_secret: 1546f3fb57232805f5d44afd97ade62d104f976261f631b573404b80fcac744f  
server\_mac\_key: 04142fcb444d419a62fcd5624dc3e31888146bcf4ab980f77445cf43d4e61ae  
client\_mac\_key: a93654bfe439ea07a85a944d650148cd0794d76341a74c8409f9c01e7a91c2d3  
opr\_key: 2dfb5cb9aa1476093be74ca0d43e5b02862a05f5d6972614d7433acdc66f7f31

### D.1.6.4. Output Values

registration\_request: 029e949a29cfa0bf7c1287333d2fb3dc586c41aa652f5070d26a5315a1b50229f8  
registration\_response: 0350d3694c00978f00a5ce7cd08a00547e4ab5fb5fc2b2f6717cdaa6c89136efef035f40ff9cf88aa1f5cd4fe5fd3da9ea65a4923a5594f84fd9f2092d6067784874  
registration\_upload: 03b218507d978c3db570ca994aaf36695a731ddb2db272c817f79746fc37ae52147f0ed53532d3ae8e505ecc70d42d2b814b6b0e48156def71ea029148b2803aafa921f2a014513bd8a90e477a629794e89fec12d12206dde662ebdcf65670e51f4d7773a36a208a866301dbb2858e40dc5638017527cf91aef32d3848eebe0971  
KE1: 037342f0bcb3ecea754c1e67576c86aa90c1de3875f390ad599a26686cdf6e6e07ab3d33bde0e93eda72392346a7a73051110674bbf6b1b7ffab8be4f91fdaeab1022ed3f32f318f81bab80da321fecab3cd9b6eea11a95666dfa6beaab321280b6  
KE2: 0246da9fe4d41d5ba69faa6c509a1d5bafd49a48615a47a8dd4b0823cc1476481138fe59af0df2c79f57b8780278f5ae47355fe1f817119041951c80f612fd6d2f0c547f70deaeca54d878c14c1aa5e1ab405dec833777132eea905c2fbb12504a67dcbe0e66740c76b62c13b04a38a77926e19072953319ec65e41f9bfd2ae268d7f106042021c80300e4c6f585980cf39fc51a4a6bba41b0729f9b240c729e5671cd9960ecef2fe0d0f7494986fa3d8b2bb01963537e60efb13981e138e3d4a103c1701353219b53acf337bf6456a83cefed8f563f1040b65afbf3b65d3bc9a19b606ebbf63c85a49acaa94b61b9c5ad3d1c8368f5e73635df42c386d9dcb77c77  
KE3: 690ab24fe2cb5889bc42426cce3445ee425fbd2f368c95aac23dfbee9729c788  
export\_key: c3c9a1b0e33ac84dd83d0b7e8af6794e17e7a3caadff289fbd9dc769a853c64b  
session\_key: a2f482abd58500c560d0f4dbd6c6e55d573cfb350ade0a016f079dfe5f42657

## **D.2. Fake Test Vectors**

### **D.2.1. OPAQUE-3DH Fake Test Vector 1**

#### **D.2.1.1. Configuration**

OPRF: ristretto255-SHA512  
Hash: SHA512  
KSF: Identity  
KDF: HKDF-SHA512  
MAC: HMAC-SHA512  
Group: ristretto255  
Context: 4f50415155452d504f43  
Nh: 64  
Npk: 32  
Nsk: 32  
Nm: 64  
Nx: 64  
Nok: 32

#### D.2.1.2. Input Values

client\_identity: 616c696365  
server\_identity: 626f62  
oprseed: 743fc168d1f826ad43738933e5adb23da6fb95f95a1b069f0daa0522d0  
a78b617f701fc6aa46d3e7981e70de7765dfcd6b1e13e3369a582eb8dc456b10aa53b  
0  
credential\_identifier: 31323334  
masking\_nonce: 9c035896a043e70f897d87180c543e7a063b83c1bb728fbd189c61  
9e27b6e5a6  
client\_private\_key: 2b98980aa95ab53a0f39f0291903d2fdf04b00c167f081416  
9922df873002409  
client\_public\_key: 84f43f9492e19c22d8bdaa4447cc3d4db1cdb5427a9f852c47  
07921212c36251  
server\_private\_key: c788585ae8b5ba2942b693b849be0c0426384e41977c18d2e  
81fbe30fd7c9f06  
server\_public\_key: 825f832667480f08b0c9069da5083ac4d0e9ee31b49c4e0310  
031fea04d52966  
server\_nonce: 1e10f6eeab2a7a420bf09da9b27a4639645622c46358de9cf7ae813  
055ae2d12  
client\_keyshare\_seed: a270dc715dc2b4612bc7864312a05c3e9788ee1bad1f276  
d1e15bdeb4c355e94  
server\_keyshare\_seed: 360b0937f47d45f6123a4d8f0d0c0814b6120d840ebb8bc  
5b4f6b62df07f78c2  
masking\_key: 39ebd51f0e39a07a1c2d2431995b0399bca9996c5d10014d6ebab445  
3dc10ce5cef38ed3df6e56bfff40c2d8dd4671c2b4cf63c3d54860f31fe40220d690b  
b71  
KE1: b0a26dcaca2230b8f5e4b1bcab9c84b586140221bb8b2848486874b0be448905  
42d4e61ed3f8d64cdd3b9d153343eca15b9b0d5e388232793c6376bd2d9cfd0ab641d  
7f20a245a09f1d4dbb6e301661af7f352beb0791d055e48d3645232f77f

#### D.2.1.3. Output Values

KE2: 928f79ad8df21963e91411b9f55165ba833dea918f441db967cdc09521d22925  
9c035896a043e70f897d87180c543e7a063b83c1bb728fbd189c619e27b6e5a632b5a  
b1bfff96636144faa4f9f9afaac75dd88ea99cf5175902ae3f3b2195693f165f11929b  
a510a5978e64dcdabecbd7ee1e4380ce270e58fea58e6462d92964a1aaef72698bca1  
c673baeb04cc2bf7de5f3c2f5553464552d3a0f7698a9ca7f9c5e70c6cb1f706b2f17  
5ab9d04bbd13926e816b6811a50b4aafa9799d5ed7971e10f6eeab2a7a420bf09da9b  
27a4639645622c46358de9cf7ae813055ae2d1298251c5ba55f6b0b2d58d9ff0c88fe  
4176484be62a96db6e2a8c4d431bd1bf27e077203e6dc290083d0769a2e8d3c8755c8  
5974c32294c6f9fa0adbb34b977472a794b9fb2bdacd6347c8f9d1e0a50b6e763f384  
f32b42c8bc40ad608ba6135e

## D.2.2. OPAQUE-3DH Fake Test Vector 2

### D.2.2.1. Configuration

OPRF: ristretto255-SHA512  
Hash: SHA512  
KSF: Identity  
KDF: HKDF-SHA512  
MAC: HMAC-SHA512  
Group: curve25519  
Context: 4f50415155452d504f43  
Nh: 64  
Npk: 32  
Nsk: 32  
Nm: 64  
Nx: 64  
Nok: 32

### D.2.2.2. Input Values

client\_identity: 616c696365  
server\_identity: 626f62  
oprff\_seed: 66e650652a8266b2205f31fdd68adeb739a05b5e650b19e7edc75e734a  
1296d6088188ca46c31ae8ccb42a52ed338c06e53645387a7efbc94b6a0449526155  
e  
credential\_identififier: 31323334  
masking\_nonce: 9c035896a043e70f897d87180c543e7a063b83c1bb728fbd189c61  
9e27b6e5a6  
client\_private\_key: 288bf63470199221847bb035d99f96531adf8badd14cb1571  
b48f7a506649660  
client\_public\_key: 3c64a3153854cc9f0c23aab3c1a19106ec8bab4730736d1d00  
3880a1d5a59005  
server\_private\_key: 30fbe7e830be1fe8d2187c97414e3826040cbe49b893b6422  
9bab5e85a588846  
server\_public\_key: 78b3040047ff26572a7619617601a61b9c81899bee92f00cfc  
aa5eed96863555  
server\_nonce: 1e10f6eeab2a7a420bf09da9b27a4639645622c46358de9cf7ae813  
055ae2d12  
client\_keyshare\_seed: a270dc715dc2b4612bc7864312a05c3e9788ee1bad1f276  
d1e15bdeb4c355e94  
server\_keyshare\_seed: 360b0937f47d45f6123a4d8f0d0c0814b6120d840ebb8bc  
5b4f6b62df07f78c2  
masking\_key: 79ad2621b0757a447dff7108a8ae20a068ce67872095620f415ea611  
c9dcc04972fa359538cd2fd6528775ca775487b2b56db642049b8a90526b975a38484  
c6a  
KE1: b0a26dcaca2230b8f5e4b1bcab9c84b586140221bb8b2848486874b0be448905  
42d4e61ed3f8d64cdd3b9d153343eca15b9b0d5e388232793c6376bd2d9cfd0ac059b  
7ba2aec863933ae48816360c7a9022e83d822704f3b0b86c0502a66e574

### **D.2.2.3. Output Values**

KE2: 6606b6fedbb33f19a81a1feb5149c600fe77252f58acd3080d7504d3dad4922f9c035896a043e70f897d87180c543e7a063b83c1bb728fbd189c619e27b6e5a67db398c0f65d8c298eac430abdae4c80e82b552fb940c00f0cbcea853c0f96c1c15099f3d4b0e83ecc249613116d605b8d77bb68bdf76994c2bc507e2dcae4176f00afed68ad25cf3040a0e991acece31ca532117f5c12816997372ff031ad04ebcdce06c501da24e7b4db95343456e2ed260895ec362694230a1fa20e24a9c71e10f6eeab2a7a420bf09da9b27a4639645622c46358de9cf7ae813055ae2d122d9055eb8f83e1b497370adad5cc2a417bf9be436a792def0c7b7ccb92b9e27513c6a0d5d96e939563ad168990ed0156b8d8fb82888ce111f217b1103b4c6d67ee9738777033dd0d85e39776993b5f1f7fa4252b13a9c37c0fdd06204ca315c6

### **D.2.3. OPAQUE-3DH Fake Test Vector 3**

#### **D.2.3.1. Configuration**

OPRF: P256-SHA256  
Hash: SHA256  
KSF: Identity  
KDF: HKDF-SHA256  
MAC: HMAC-SHA256  
Group: P256\_XMD:SHA-256\_SSWU\_RO\_  
Context: 4f50415155452d504f43  
Nh: 32  
Npk: 33  
Nsk: 32  
Nm: 32  
Nx: 32  
Nok: 32

### D.2.3.2. Input Values

client\_identity: 616c696365  
server\_identity: 626f62  
oprseed: bb1cd59e16ac09bc0cb6d528541695d7eba2239b1613a3db3ade77b36280f725  
credential\_identifier: 31323334  
masking\_nonce: 9c035896a043e70f897d87180c543e7a063b83c1bb728fbd189c619e27b6e5a6  
client\_private\_key: d423b87899fc61d014fc8330a4e26190fcfa470a3afe5924324294af7dbbc1dd  
client\_public\_key: 03b81708eae026a9370616c22e1e8542fe9dbebd36ce8a2661b708e9628f4a57fc  
server\_private\_key: 34fbe7e830be1fe8d2187c97414e3826040cbe49b893b64229bab5e85a5888c7  
server\_public\_key: 0221e034c0e202fe883dcfc96802a7624166fed4cfcab4ae30cf5f3290d01c88bf  
server\_nonce: 1e10f6eeab2a7a420bf09da9b27a4639645622c46358de9cf7ae813055ae2d12  
client\_keyshare\_seed: a270dc715dc2b4612bc7864312a05c3e9788ee1bad1f276d1e15bdeb4c355e94  
server\_keyshare\_seed: 360b0937f47d45f6123a4d8f0d0c0814b6120d840ebb8bc5b4f6b62df07f78c2  
masking\_key: caecc6ccb4cae27cb54d8f3a1af1bac52a3d53107ce08497cdd362b1992e4e5e  
KE1: 0396875da2b4f7749bba411513aea02dc514a48d169d8a9531bd61d3af3fa9baae42d4e61ed3f8d64cdd3b9d153343eca15b9b0d5e388232793c6376bd2d9cfd0a02147a6583983cc9973b5082db5f5070890cb373d70f7ac1b41ed2305361009784

### D.2.3.3. Output Values

KE2: 0201198dcd13f9792eb75dcfa815f61b049abfe2e3e9456d4bbbceec5f442efd049c035896a043e70f897d87180c543e7a063b83c1bb728fbd189c619e27b6e5a6facda65ce0a97b9085e7af07f61fd3fdd046d257cbf2183ce8766090b8041a8bf28d79dd4c9031ddc75bb6ddb4c291e639937840e3d39fc0d5a3d6e7723c09f7945df485bcf9aefe3fe82d149e84049e259bb5b33d6a2ff3b25e4bfb7eff0962821e10f6eeab2a7a420bf09da9b27a4639645622c46358de9cf7ae813055ae2d12023f82bbb24e75b8683fd13b843cd566efae996cd0016cffdccc24ee2bc937d026f459621ce1b4126bc75fb61141194c77ea9dc92d11aa1993f35336ccdbbcf13fc

### Authors' Addresses

Daniel Bourdrez

Email: [d@bytema.re](mailto:d@bytema.re)

Hugo Krawczyk  
Algorand Foundation

Email: [hugokraw@gmail.com](mailto:hugokraw@gmail.com)

Kevin Lewi  
Novi Research

Email: [lewi.kevin.k@gmail.com](mailto:lewi.kevin.k@gmail.com)

Christopher A. Wood  
Cloudflare, Inc.

Email: [caw@heapingbits.net](mailto:caw@heapingbits.net)