

IPWAVE Working Group  
Internet-Draft  
Intended status: Standards Track  
Expires: January 9, 2020

J. Jeong  
Y. Shen  
Z. Xiang  
Sungkyunkwan University  
July 8, 2019

Vehicular Mobility Management for IP-Based Vehicular Networks  
draft-jeong-ipwave-vehicular-mobility-management-01

## Abstract

This document specifies a Vehicular Mobility Management (VMM) scheme for IP-based vehicular networks. The VMM scheme takes advantage of a vehicular link model based on a multi-link subnet. With a vehicle's mobility information (e.g., position, speed, and direction) and navigation path (i.e., trajectory), it can provide a moving vehicle with proactive and seamless handoff along with its trajectory.

## Status of This Memo

This Internet-Draft is submitted in full conformance with the provisions of [BCP 78](#) and [BCP 79](#).

Internet-Drafts are working documents of the Internet Engineering Task Force (IETF). Note that other groups may also distribute working documents as Internet-Drafts. The list of current Internet-Drafts is at <https://datatracker.ietf.org/drafts/current/>.

Internet-Drafts are draft documents valid for a maximum of six months and may be updated, replaced, or obsoleted by other documents at any time. It is inappropriate to use Internet-Drafts as reference material or to cite them other than as "work in progress."

This Internet-Draft will expire on January 9, 2020.

## Copyright Notice

Copyright (c) 2019 IETF Trust and the persons identified as the document authors. All rights reserved.

This document is subject to [BCP 78](#) and the IETF Trust's Legal Provisions Relating to IETF Documents (<https://trustee.ietf.org/license-info>) in effect on the date of publication of this document. Please review these documents carefully, as they describe your rights and restrictions with respect to this document. Code Components extracted from this document must include Simplified BSD License text as described in [Section 4.e](#) of

the Trust Legal Provisions and are provided without warranty as described in the Simplified BSD License.

## Table of Contents

<a href="#">1.</a>	Introduction . . . . .	<a href="#">2</a>
<a href="#">2.</a>	Requirements Language . . . . .	<a href="#">3</a>
<a href="#">3.</a>	Terminology . . . . .	<a href="#">3</a>
<a href="#">4.</a>	Vehicular Network Architecture . . . . .	<a href="#">4</a>
<a href="#">4.1.</a>	Vehicular Network . . . . .	<a href="#">4</a>
<a href="#">5.</a>	Mobility Management . . . . .	<a href="#">6</a>
<a href="#">5.1.</a>	Network Attachment of a Vehicle . . . . .	<a href="#">6</a>
<a href="#">5.2.</a>	Handoff within One Prefix Domain . . . . .	<a href="#">8</a>
<a href="#">5.3.</a>	Handoff between Multiple Prefix Domains . . . . .	<a href="#">10</a>
<a href="#">6.</a>	Security Considerations . . . . .	<a href="#">12</a>
<a href="#">7.</a>	References . . . . .	<a href="#">12</a>
<a href="#">7.1.</a>	Normative References . . . . .	<a href="#">12</a>
<a href="#">7.2.</a>	Informative References . . . . .	<a href="#">12</a>
<a href="#">Appendix A.</a>	Changes from <a href="#">draft-jeong-ipwave-vehicular-mobility-management-00</a> . . . . .	<a href="#">14</a>
<a href="#">Appendix B.</a>	Acknowledgments . . . . .	<a href="#">14</a>
	Authors' Addresses . . . . .	<a href="#">14</a>

## [1.](#) Introduction

This document proposes a mobility management scheme for IP-based vehicular networks, which is called Vehicular Mobility Management (VMM). The VMM is tailored for a vehicular network architecture and a vehicular link model described in the IPWAVE problem statement document [[I-D.IPWAVE-PS](#)].

To support the interaction between vehicles or between vehicles and Road-Side Units (RSUs), Vehicular Neighbor Discovery (VND) is proposed as an enhanced IPv6 Neighbor Discovery (ND) for IP-based vehicular networks [[I-D.IPWAVE-VND](#)]. For an efficient IPv6 Stateless Address Autoconfiguration (SLAAC) [[RFC4862](#)], VND adopts an optimized Address Registration using a multihop Duplicate Address Detection (DAD). This multihop DAD enables a vehicle to have a unique IP address in a multi-link subnet that consists of multiple wireless subnets with the same IP prefix, which corresponds to wireless coverage of multiple RSUs. Also, VND supports IP packet routing via a connected Vehicular Ad Hoc Network (VANET) by letting vehicles exchange the prefixes of their internal networks through their

external wireless interface.

The mobility management in this multi-link subnet needs a new approach from legacy mobility management schemes. This document aims at an efficient mobility management scheme called VMM to support

efficient V2V, V2I, and V2X communications in a road network. The VMM takes advantage of the mobility information (e.g., a vehicle's speed, direction, and position) and trajectory (i.e., navigation path) of each vehicle registered into a Traffic Control Center (TCC) in the vehicular cloud.

## [2.](#) Requirements Language

The key words "MUST", "MUST NOT", "REQUIRED", "SHALL", "SHALL NOT", "SHOULD", "SHOULD NOT", "RECOMMENDED", "MAY", and "OPTIONAL" in this document are to be interpreted as described in [RFC 2119](#) [[RFC2119](#)].

## [3.](#) Terminology

This document uses the terminology described in [[RFC4861](#)] and [[RFC4862](#)]. In addition, the following new terms are defined as below:

- o DMM: Acronym for "Distributed Mobility Management" [[RFC7333](#)][RFC7429].
- o Mobility Anchor (MA): A node that maintains IP addresses and mobility information of vehicles in a road network to support their address autoconfiguration and mobility management with a binding table. It has end-to-end connections with RSUs under its control.
- o On-Board Unit (OBU): A node that has a network interface (e.g., IEEE 802.11-OCB and Cellular V2X (C-V2X) [[TS-23.285-3GPP](#)]) for wireless communications with other OBUs and RSUs, and may be connected to in-vehicle devices or networks. An OBU is mounted on a vehicle. It is assumed that a radio navigation receiver (e.g., Global Positioning System (GPS)) is included in a vehicle with an OBU for efficient navigation.
- o OCB: Acronym for "Outside the Context of a Basic Service Set"

[[IEEE-802.11-OCB](#)].

- o Road-Side Unit (RSU): A node that has physical communication devices (e.g., IEEE 802.11-OCB and C-V2X) for wireless communications with vehicles and is also connected to the Internet as a router or switch for packet forwarding. An RSU is typically deployed on the road infrastructure, either at an intersection or in a road segment, but may also be located in car parking areas.
- o Traffic Control Center (TCC): A node that maintains road infrastructure information (e.g., RSUs, traffic signals, and loop detectors), vehicular traffic statistics (e.g., average vehicle

speed and vehicle inter-arrival time per road segment), and vehicle information (e.g., a vehicle's identifier, position, direction, speed, and trajectory as a navigation path). TCC is included in a vehicular cloud for vehicular networks.

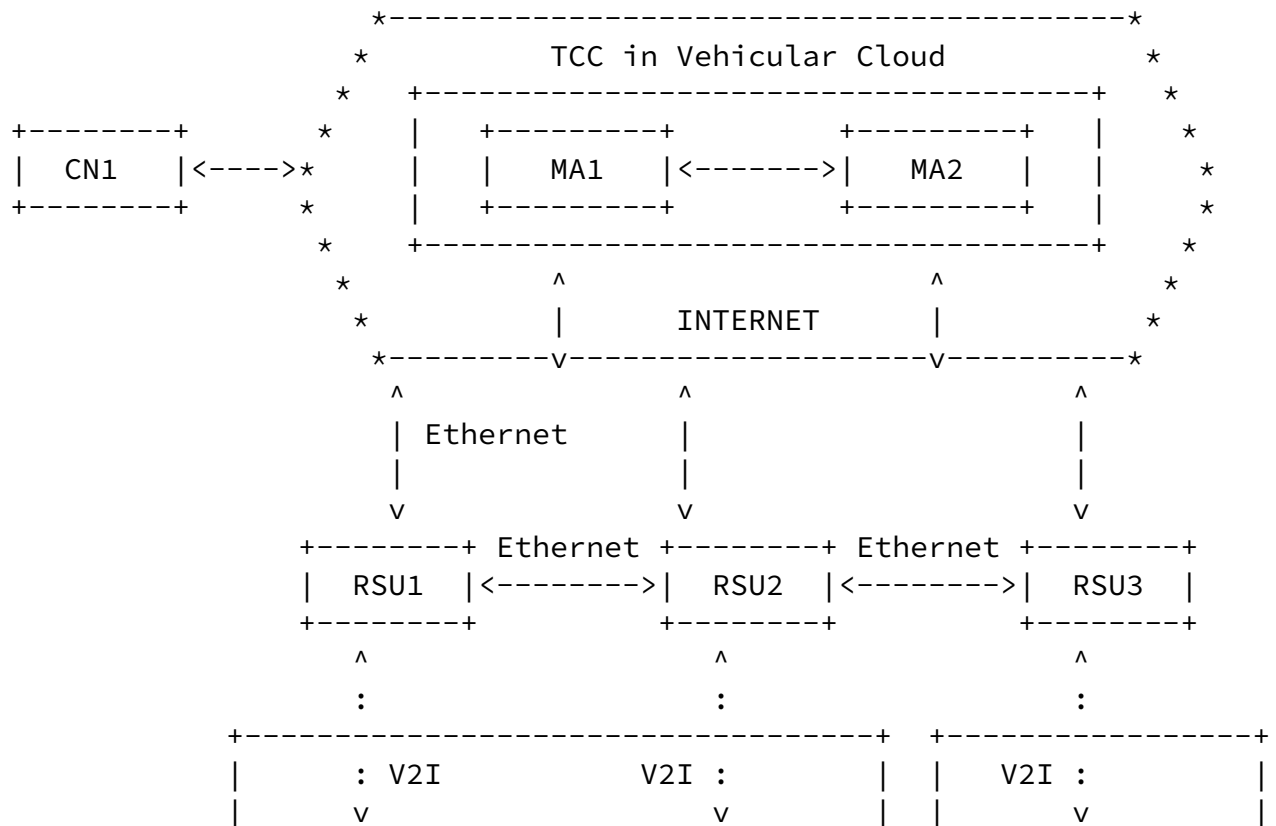
- o Vehicular Cloud: A cloud infrastructure for vehicular networks, having compute nodes, storage nodes, and network nodes.
- o WAVE: Acronym for "Wireless Access in Vehicular Environments" [[WAVE-1609.0](#)].

#### [4.](#) Vehicular Network Architecture

This section describes a vehicular network architecture for V2V and V2I communication. A vehicle and an RSU have their internal networks including in-vehicle devices or servers, respectively.

##### [4.1.](#) Vehicular Network

A vehicular network architecture for V2I and V2V is illustrated in Figure 1. In this figure, there is a vehicular cloud having a TCC. The TCC has Mobility Anchors (MAs) for the mobility management of vehicles under its control. Each MA is in charge of the mobility management of vehicles under its prefix domain, which is a multi-link subnet of RSUs sharing the same prefix [[I-D.IPWAVE-PS](#)]. A vehicular network is a wireless network consisting of RSUs and vehicles. RSUs are interconnected with each other through a wired network, and vehicles can construct VANETs via V2V and V2I communications.



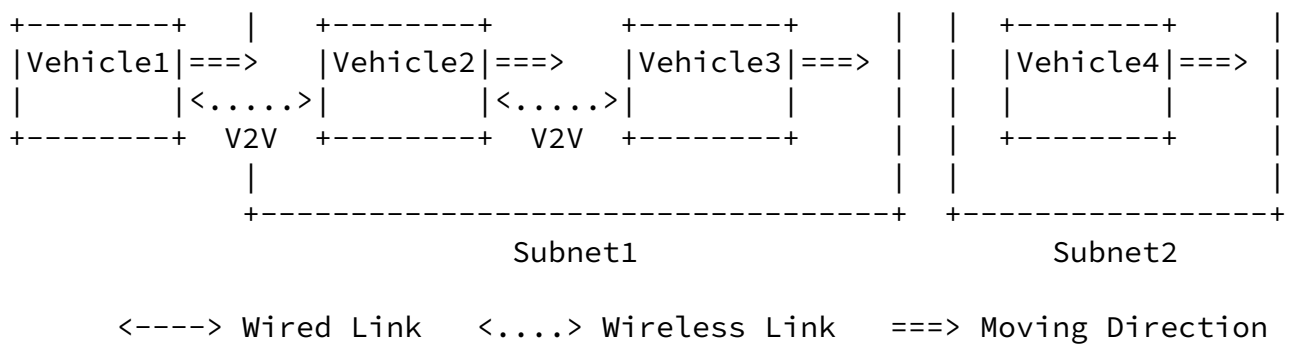


Figure 1: A Vehicular Network Architecture for V2I and V2V Networking

In Figure 1, three RSUs are deployed either at intersections or along roadways. They are connected to an MA through wired networks. In the vehicular network, there are two subnets such as Subnet1 and Subnet2. Subnet1 is a multi-link subnet consisting of multiple wireless coverage areas of multiple RSUs, and those areas share the same IPv6 prefix to construct a single logical subnet [I-D.IPWAVE-PS]. That is, the wireless links of RSU1 and RSU2 belong to Subnet1. Thus, since Vehicle2 and Vehicle3 use the same prefix for Subnet1 and they are within the wireless communication range, they can communicate directly with each other. Note that in a multi-link subnet, a vehicle (e.g., Vehicle2 and Vehicle3 in Figure 1) can configure its global IPv6 address through an address registration procedure including a multihop DAD, which is specified in VND [I-D.IPWAVE-VND].

On the other hand, Subnet2 uses a prefix different from Subnet1's. Vehicle4 residing in Subnet2 cannot talk to Vehicle3 directly because they belong to different subnets. Vehicles can construct a connected VANET, so they can communicate with each other without the relaying of an RSU, but the forwarding over the VANET. In the case where two vehicles belong to the same multi-link subnet, but they are not connected in the same VANET, they can use RSUs. In Figure 1, even though Vehicle1 are disconnected from Vehicle3, they can communicate indirectly with each other through RSUs such as RSU1 and RSU2.

In Figure 1, it is assumed that Vehicle2 communicates with the corresponding node denoted as CN1 where Vehicle2 is moving in the wireless coverage of RSU1. When Vehicle2 moves out of the coverage of RSU1 and moves into the coverage of RSU2 where RSU1 and RSU2 share the same prefix, the packets sent by CN1 should be routed toward

Vehicle2. Also, when Vehicle2 moves out of the coverage of RSU2 and moves into the coverage of RSU3 where RSU2 and RSU3 use two different prefixes, the packets of CN1 should be delivered to Vehicle2. With a handoff procedure, a sender's packets can be delivered to a destination vehicle which is moving in the wireless coverage areas. Thus, this document specifies a mobility management scheme in the vehicular network architecture, as shown in Figure 1.

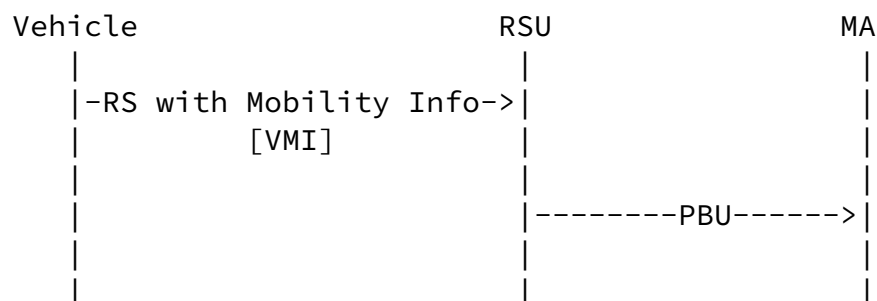
## 5. Mobility Management

This section explains the detailed procedure of mobility management of a vehicle in a vehicular network as shown in Figure 1.

### 5.1. Network Attachment of a Vehicle

A mobility management is required for the seamless communication of vehicles moving between the RSUs. When a vehicle moves into the coverage of another RSU, a different IP address is assigned to the vehicle, resulting in the re-configuration of transport-layer session information (i.e., an end-point's IP address) to avoid service disruption. Considering this issue, this document proposes a handoff mechanism for seamless communication.

In [[VIP-WAVE](#)], the authors constructed a network-based mobility management scheme using Proxy Mobile IPv6 (PMIPv6) [[RFC5213](#)], which is highly suitable for vehicular networks. This document uses a mobility management procedure similar to PMIPv6 along with prefix discovery.



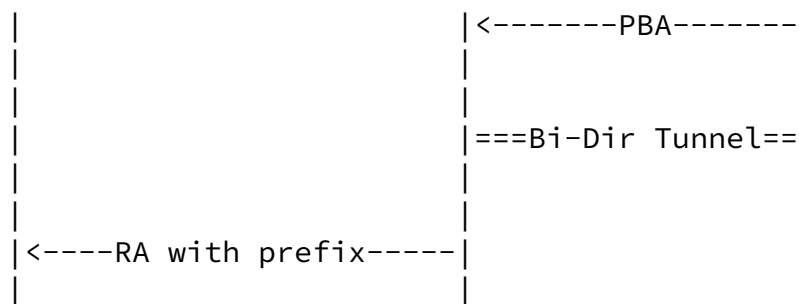


Figure 2: Message Interaction for a Vehicle's Network Attachment

Figure 2 shows the binding update flow when a vehicle entered the subnet of an RSU. RSUs act as Mobility Anchor Gateway (MAG) defined in [VIP-WAVE]. When it receives an RS message from a vehicle containing its mobility information (e.g., position, speed, and direction), an RSU sends its MA a Proxy Binding Update (PBU) message [RFC5213][RFC3775], which contains a Mobility Option for the vehicle's mobility information. The MA receives the PBU and sets up a Binding Cache Entry (BCE) as well as a bi-directional tunnel (denoted as Bi-Dir Tunnel in Figure 2) between the serving RSU and itself. Through this tunnel, all traffic packets to the vehicle are encapsulated toward the RSU. Simultaneously, the MA sends back a Proxy Binding Acknowledgment (PBA) message to the serving RSU. This serving RSU receives the PBA and sets up a bi-directional tunnel with the MA. After this binding update, the RSU sends back an RA message to the vehicle, which includes the RSU's prefix for the address autoconfiguration of the vehicle.

When the vehicle receives the RA message, it performs the address registration procedure including a multihop DAD for its global IP address based on the prefix announced by the RA message according to the VND [I-D.IPWAVE-VND].

In PMIPv6, a unique prefix is allocated to each vehicle by an MA (i.e., LMA) to guarantee the uniqueness of each address, but in this document, a unique IP address is allocated to each vehicle with the same prefix by an MA in its domain through the multihop-DAD-based address registration. This unique IP address allocation ensures that

vehicles own unique IP addresses in a multi-link subnet and can



reduce the waste of IP prefixes in legacy PMIPv6.

### 5.2. Handoff within One Prefix Domain

When the vehicle changes its location and its current RSU (denoted as c-RSU) detects that the vehicle is moving out of its coverage, c-RSU needs to report the leaving of the vehicle to the MA and de-register the binding via PBU.

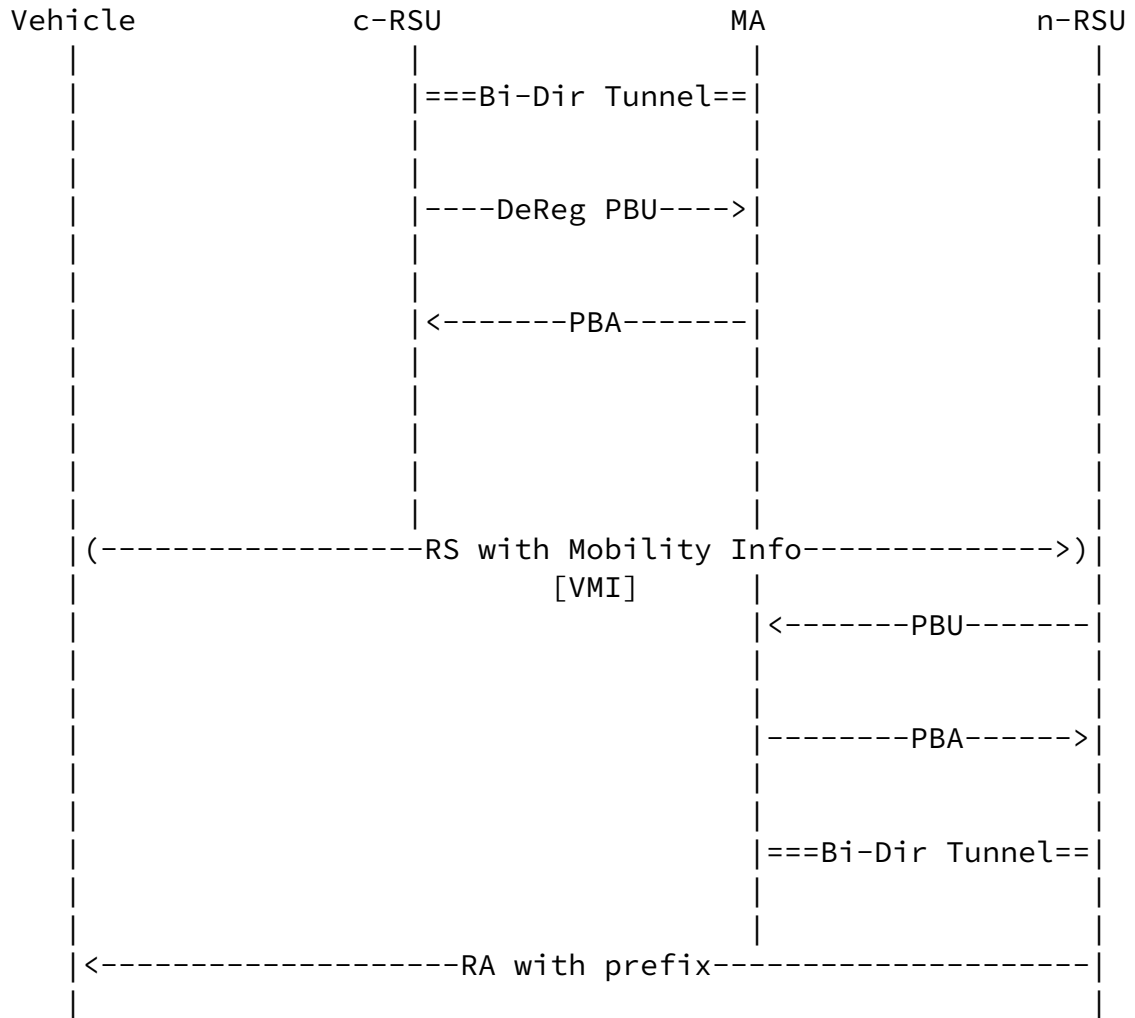


Figure 3: Handoff of a Vehicle within One Prefix Domain with PMIPv6

With this report, the MA can figure out the new RSU (denoted as n-RSU) based on the vehicle's trajectory and change the end-point of the tunnel into n-RSU's IP address for the vehicle or get ready to detect new binding requests.

Figure 3 shows the handoff of a vehicle within one prefix domain (i.e., a multi-link subnet) with PMIPv6. As shown in the figure,

when the MA receives a new PBU from the n-RSU, it changes the tunnel's end-point from the c-RSU to n-RSU. If there are ongoing IP packets toward the vehicle, the MA encapsulates the packets and then forwards them towards n-RSU. Through this network-based mobility management, the vehicle is not aware of any changes at its network layer and can maintain its transport-layer sessions without any disruption.

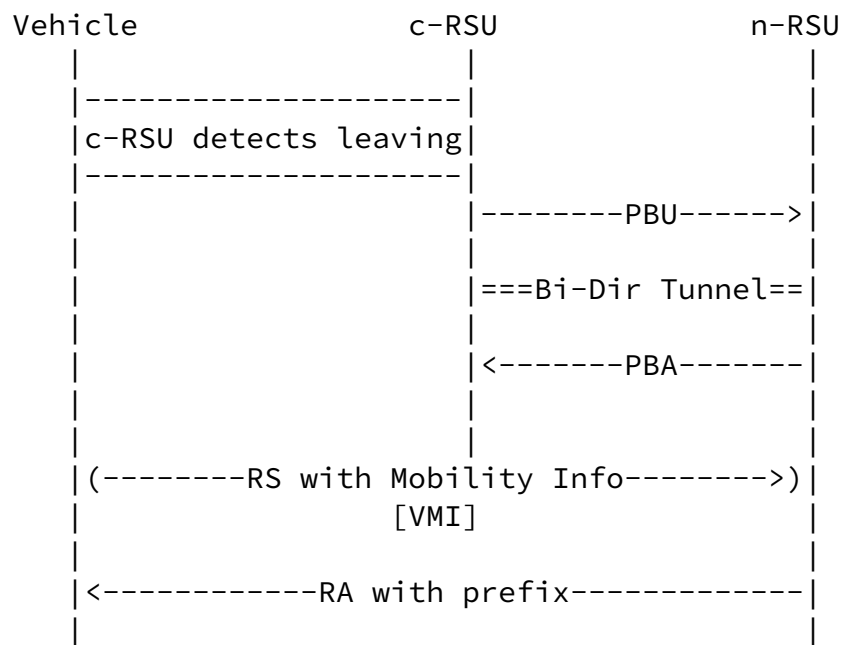


Figure 4: Handoff of a Vehicle within One Prefix Domain with DMM

If c-RSU and n-RSU are adjacent, that is, vehicles are moving in specified routes with fixed RSU allocation, the procedure can be simplified by constructing the bidirectional tunnel directly between them (cancel the intervention of MA) to alleviate the traffic flow in MA as well as reduce handoff delay.

Figure 4 shows the handoff of a vehicle within one prefix domain (as a multi-link subnet) with DMM [I-D.DMM-PMIPv6]. RSUs are in charge of detecting when a node joins or moves through its domain. If c-RSU detects that the vehicle is going to leave its coverage and to enter the area of an adjacent RSU, it sends a PBU message to inform n-RSU of the handoff of the vehicle. If n-RSU receives the PBU message, it constructs a bidirectional tunnel between c-RSU and itself, and then sends back a PBA message as an acknowledgment to c-RSU. If there are ongoing IP packets toward the vehicle, c-RSU encapsulates the packets and then forwards them to n-RSU. When n-RSU detects the entrance of the vehicle, it directly sends an RA message to the vehicle so that the vehicle can assure that it is still connected to a router with

its current prefix. If the vehicle sends an RS message to n-RSU, n-RSU responds to the RS message by sending an RA to the vehicle.

**5.3. Handoff between Multiple Prefix Domains**

When the vehicle moves from a prefix domain to another prefix domain, a handoff between multiple prefix domains is required. As shown in Figure 1, when Vehicle3 moves from the subnet of RSU2 (i.e., Subnet1) to the subnet of RSU3 (i.e., Subnet2), a multiple domain handoff is performed through the cooperation of RSU2, RSU3, MA1 and MA2.

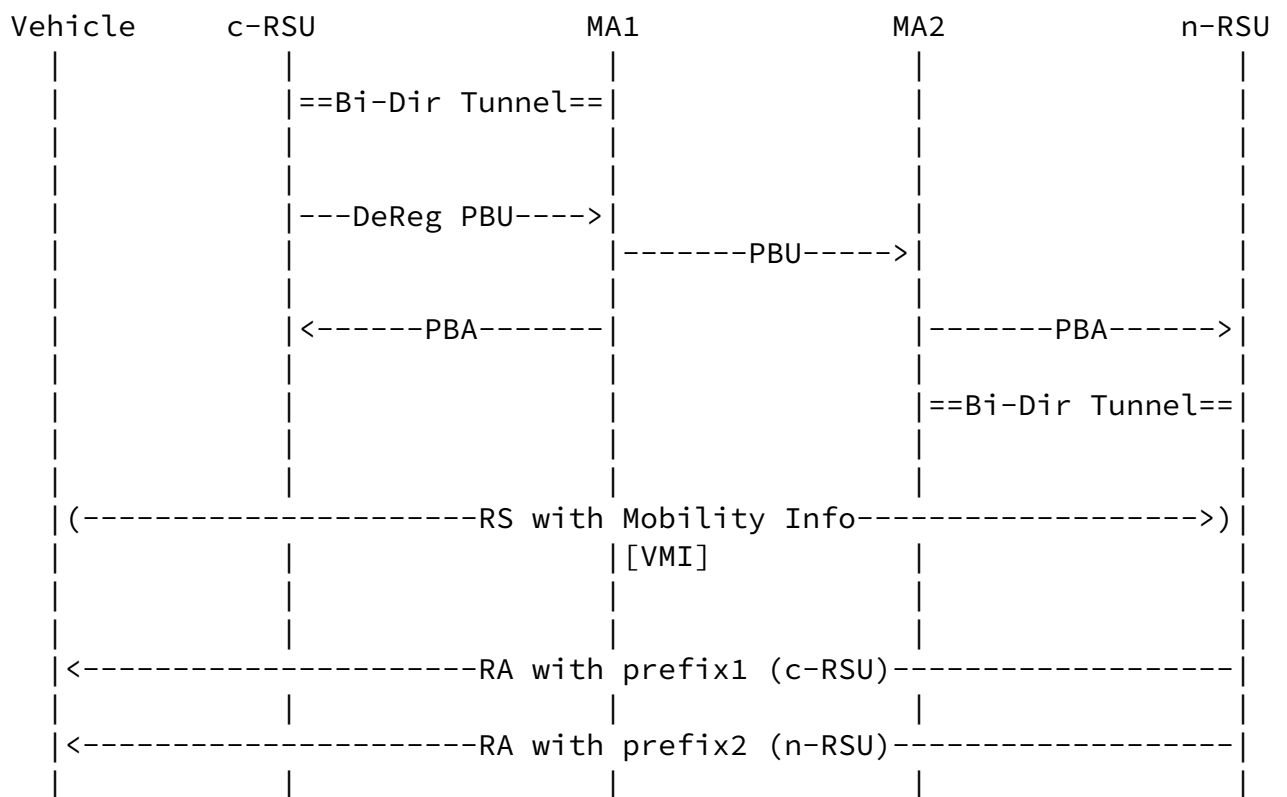


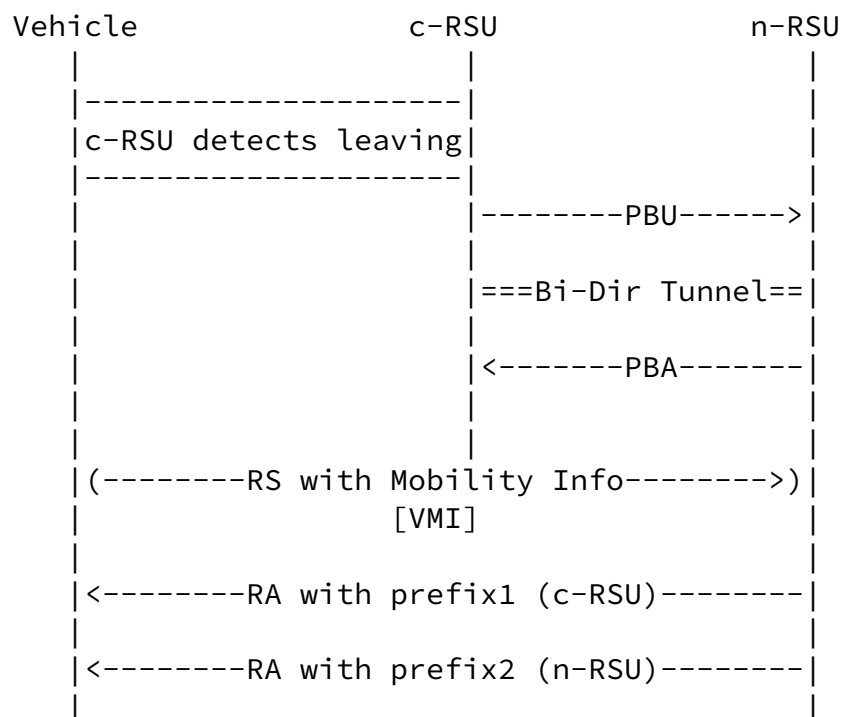
Figure 5: Handoff of a Vehicle between Multiple Prefix Domains with PMIPv6

Figure 5 shows the handoff of a vehicle between two prefix domains (i.e., two multi-link subnets) with PMIPv6. When the vehicle moves out of its c-RSU belonging to Subnet1, and moves into the n-RSU belonging to Subnet2, c-RSU detects the vehicle's leaving and reports to MA1. MA1 figures out that the vehicle will get into the coverage of the n-RSU based on its trajectory and sends MA2 a PBU message to

inform MA2 that the vehicle will enter the coverage of n-RSU belonging to MA2. MA2 sends n-RSU a PBA message to inform n-RSU that the vehicle will enter the coverage of n-RSU along with handoff context such as c-RSU's context information (e.g., c-RSU's link-local address and prefix called prefix1), and the vehicle's context information (e.g., the vehicle's global IP address and MAC address). After n-RSU receives the PBA message including the handoff context from MA2, it sets up a bi-directional tunnel with MA2, and generates RA messages with c-RSU's context information. That is, n-RSU

pretends to be a router belonging to Subnet1. When the vehicle receives RA from n-RSU, it can maintain its connection with its corresponding node (i.e., CN1). Note that n-RSU also sends RA messages with its domain prefix called prefix2. The vehicle configures another global IP address with prefix2, and can use it for communication with neighboring vehicles under the coverage of n-RSU.

If c-RSU and n-RSU are adjacent, that is, vehicles are moving in specified routes with fixed RSU allocation, the procedure can be simplified by constructing the bidirectional tunnel directly between them (cancel the intervention of MAs) to alleviate the traffic flow in MA as well as reduce handoff delay.



## Figure 6: Handoff of a Vehicle within Multiple Prefix Domains with DMM

Figure 6 shows the handoff of a vehicle within two prefix domains (as two multi-link subnets) with DMM [[I-D.DMM-PMIPv6](#)]. If c-RSU detects that the vehicle is going to leave its coverage and to enter the area of an adjacent RSU (n-RSU) belonging to a different prefix domain, it sends a PBU message to inform n-RSU that the vehicle will enter the coverage of n-RSU along with handoff context such as c-RSU's context information (e.g., c-RSU's link-local address and prefix called prefix1), and the vehicle's context information (e.g., the vehicle's global IP address and MAC address). After n-RSU receives the PBA message including the handoff context from c-RSU, it sets up a bi-directional tunnel with c-RSU, and generates RA messages with c-RSU's context information. That is, n-RSU pretends to be a router

Jeong, et al.

Expires January 9, 2020

[Page 11]

---

Internet-Draft

Vehicular Mobility Management

July 2019

belonging to Subnet1. When the vehicle receives RA from n-RSU, it can maintain its connection with its corresponding node (i.e., CN1). Note that n-RSU also sends RA messages with its domain prefix called prefix2. The vehicle configures another global IP address with prefix2, and can use it for communication with neighboring vehicles under the coverage of n-RSU.

## 6. Security Considerations

This document shares all the security issues of Vehicular ND [[I-D.IPWAVE-VND](#)], Proxy MIPv6 [[RFC5213](#)], and DMM [[RFC7333](#)] [[RFC7429](#)] [[I-D.DMM-PMIPv6](#)].

## 7. References

### 7.1. Normative References

- [RFC2119] Bradner, S., "Key words for use in RFCs to Indicate Requirement Levels", [BCP 14](#), [RFC 2119](#), March 1997.
- [RFC3775] Johnson, D., Perkins, C., and J. Arkko, "Mobility Support in IPv6", [RFC 3775](#), June 2004.
- [RFC4861] Narten, T., Nordmark, E., Simpson, W., and H. Soliman, "Neighbor Discovery for IP Version 6 (IPv6)", [RFC 4861](#),

September 2007.

- [RFC4862] Thomson, S., Narten, T., and T. Jinmei, "IPv6 Stateless Address Autoconfiguration", [RFC 4862](#), September 2007.
- [RFC5213] Gundavelli, S., Leung, K., Devarapalli, V., and K. Chowdhury, "Proxy Mobile IPv6", [RFC 5213](#), August 2008.
- [RFC7333] Chan, H., Liu, D., Seite, P., Yokota, H., and J. Korhonen, "Requirements for Distributed Mobility Management", [RFC 7333](#), August 2014.
- [RFC7429] Liu, D., Zuniga, JC., Seite, P., Chan, H., and CJ. Bernardos, "Distributed Mobility Management: Current Practices and Gap Analysis", [RFC 7429](#), January 2015.

## 7.2. Informative References

- [I-D.DMM-PMIPv6] Bernardos, CJ., Oliva, A., Giust, F., Zuniga, JC., and A. Mourad, "Proxy Mobile IPv6 extensions for Distributed Mobility Management", [draft-ietf-dmm-pmipv6-dlif-04](#) (work in progress), January 2019.

Jeong, et al. Expires January 9, 2020 [Page 12]

---

Internet-Draft Vehicular Mobility Management July 2019

- [I-D.IPWAVE-PS] Jeong, J., Ed., "IP Wireless Access in Vehicular Environments (IPWAVE): Problem Statement and Use Cases", [draft-ietf-ipwave-vehicular-networking-09](#) (work in progress), May 2019.

- [I-D.IPWAVE-VND] Jeong, J., Ed., Shen, Y., and Z. Xiang, "Vehicular Neighbor Discovery for IP-Based Vehicular Networks", [draft-jeong-ipwave-vehicular-neighbor-discovery-07](#) (work in progress), July 2019.

- [IEEE-802.11-OCB] "Part 11: Wireless LAN Medium Access Control (MAC) and Physical Layer (PHY) Specifications", IEEE Std 802.11-2016, December 2016.

- [TS-23.285-3GPP]

3GPP, "Architecture Enhancements for V2X Services", 3GPP TS 23.285, June 2018.

[VIP-WAVE]

Cespedes, S., Lu, N., and X. Shen, "VIP-WAVE: On the Feasibility of IP Communications in 802.11p Vehicular Networks", IEEE Transactions on Intelligent Transportation Systems, vol. 14, no. 1, March 2013.

[WAVE-1609.0]

IEEE 1609 Working Group, "IEEE Guide for Wireless Access in Vehicular Environments (WAVE) - Architecture", IEEE Std 1609.0-2013, March 2014.

Jeong, et al.

Expires January 9, 2020

[Page 13]

---

Internet-Draft

Vehicular Mobility Management

July 2019

[Appendix A](#). Changes from [draft-jeong-ipwave-vehicular-mobility-management-00](#)

The following changes are made from [draft-jeong-ipwave-vehicular-mobility-management-00](#):

- o In [Section 4.1](#), the description of the vehicular network architecture is clarified.
- o In [Section 5.2](#), the description on the handoff procedure within one prefix domain is clarified.

- o In [Section 5.3](#), the description on the the handoff procedure within multiple prefix domains is clarified.
- o Some typo errors are corrected and the repeated acronyms are removed.

#### [Appendix B](#). Acknowledgments

This work was supported by Basic Science Research Program through the National Research Foundation of Korea (NRF) funded by the Ministry of Education (2017R1D1A1B03035885).

This work was supported by the MSIT (Ministry of Science and ICT), Korea, under the ITRC (Information Technology Research Center) support program (IITP-2019-2017-0-01633) supervised by the IITP (Institute for Information & communications Technology Promotion).

#### Authors' Addresses

Jaehoon Paul Jeong  
Department of Computer Science and Engineering  
Sungkyunkwan University  
2066 Seobu-Ro, Jangan-Gu  
Suwon, Gyeonggi-Do 16419  
Republic of Korea

Phone: +82 31 299 4957  
Fax: +82 31 290 7996  
EMail: pauljeong@skku.edu  
URI: <http://iotlab.skku.edu/people-jaehoon-jeong.php>

Yiwen Chris Shen  
Department of Electrical and Computer Engineering  
Sungkyunkwan University  
2066 Seobu-Ro, Jangan-Gu



Suwon, Gyeonggi-Do 16419  
Republic of Korea

Phone: +82 31 299 4106  
Fax: +82 31 290 7996  
EMail: chrisshen@skku.edu

Zhong Xiang  
Department of Electrical and Computer Engineering  
Sungkyunkwan University  
2066 Seobu-Ro, Jangan-Gu  
Suwon, Gyeonggi-Do 16419  
Republic of Korea

Phone: +82 10 9895 1211  
Fax: +82 31 290 7996  
EMail: xz618@skku.edu