

Network Working Group  
Internet Draft  
Intended status: Standard Track  
Expires: June 16, 2018

Y. Lee  
Huawei  
  
G. Bernstein  
Grotto Networking  
  
Jonas Martensson  
Acreo  
  
T. Takeda  
NTT  
  
T. Tsuritani  
KDDI

December 17, 2018

## **PCEP Extensions for WSON Impairments**

[draft-lee-pce-wson-impairments-08](#)

### **Abstract**

As an optical signal progresses along its path it may be altered by the various physical processes in the optical fibers and devices it encounters. When such alterations result in signal degradation, these processes are usually referred to as "impairments". These physical characteristics may be important constraints to consider in path computation process in wavelength switched optical networks.

This document provides PCEP extensions to support Impairment Aware Routing and Wavelength Assignment (IA-RWA) in wavelength switched optical networks.

### **Status of this Memo**

This Internet-Draft is submitted to IETF in full conformance with the provisions of [BCP 78](#) and [BCP 79](#).



Internet-Drafts are working documents of the Internet Engineering Task Force (IETF), its areas, and its working groups. Note that other groups may also distribute working documents as Internet-Drafts.

Internet-Drafts are draft documents valid for a maximum of six months and may be updated, replaced, or obsoleted by other documents at any time. It is inappropriate to use Internet-Drafts as reference material or to cite them other than as "work in progress."

The list of current Internet-Drafts can be accessed at <http://www.ietf.org/ietf/1id-abstracts.txt>

The list of Internet-Draft Shadow Directories can be accessed at <http://www.ietf.org/shadow.html>.

This Internet-Draft will expire on June 3, 2019.

#### Copyright Notice

Copyright (c) 2018 IETF Trust and the persons identified as the document authors. All rights reserved.

This document is subject to [BCP 78](#) and the IETF Trust's Legal Provisions Relating to IETF Documents (<http://trustee.ietf.org/license-info>) in effect on the date of publication of this document. Please review these documents carefully, as they describe your rights and restrictions with respect to this document. Code Components extracted from this document must include Simplified BSD License text as described in Section 4.e of the [Trust Legal Provisions](#) and are provided without warranty as described in the Simplified BSD License.

#### Conventions used in this document

The key words "MUST", "MUST NOT", "REQUIRED", "SHALL", "SHALL NOT", "SHOULD", "SHOULD NOT", "RECOMMENDED", "NOT RECOMMENDED", "MAY", and "OPTIONAL" in this document are to be interpreted as described in [BCP 14](#) [[RFC2119](#)] [[RFC8174](#)] when, and only when, they appear in all capitals, as shown here.



## Table of Contents

|                          |   |                    |
|--------------------------|---|--------------------|
| <a href="#">1.</a>       | <a href="#">Introduction.....</a>   | <a href="#">3</a>  |
| <a href="#">1.1.</a>     | <a href="#">WSON RWA Processes (no impairments).....</a>                  | <a href="#">5</a>  |
| <a href="#">1.2.</a>     | <a href="#">WSON IA-RWA Processes.....</a>                                | <a href="#">6</a>  |
| <a href="#">2.</a>       | <a href="#">WSON PCE Architectures and Requirements.....</a>              | <a href="#">8</a>  |
| <a href="#">2.1.</a>     | <a href="#">RWA PCC to PCE Interface.....</a>                             | <a href="#">9</a>  |
| <a href="#">2.1.1.</a>   | <a href="#">A new RWA path request.....</a>                               | <a href="#">9</a>  |
| <a href="#">2.1.1.1.</a> | <a href="#">Signal Quality Measure TLV.....</a>                           | <a href="#">10</a> |
| <a href="#">2.1.2.</a>   | <a href="#">A new RWA path reply.....</a>                                 | <a href="#">12</a> |
| <a href="#">2.1.2.1.</a> | <a href="#">Signal Quality Measure TLV.....</a>                           | <a href="#">12</a> |
| <a href="#">2.2.</a>     | <a href="#">RWA-PCE to IV-PCE Interface.....</a>                          | <a href="#">14</a> |
| <a href="#">2.2.1.</a>   | <a href="#">A new impairment-validated (IV) path request.....</a>         | <a href="#">15</a> |
| <a href="#">2.2.2.</a>   | <a href="#">A new impairment-validated (IV) path reply.....</a>           | <a href="#">15</a> |
| <a href="#">3.</a>       | <a href="#">Manageability Considerations.....</a>                         | <a href="#">15</a> |
| <a href="#">3.1.</a>     | <a href="#">Control of Function and Policy.....</a>                       | <a href="#">15</a> |
| <a href="#">3.2.</a>     | <a href="#">Information and Data Models, e.g. MIB module.....</a>         | <a href="#">16</a> |
| <a href="#">3.3.</a>     | <a href="#">Liveness Detection and Monitoring.....</a>                    | <a href="#">16</a> |
| <a href="#">3.4.</a>     | <a href="#">Verifying Correct Operation.....</a>                          | <a href="#">16</a> |
| <a href="#">3.5.</a>     | <a href="#">Requirements on Other Protocols and Functional Components</a> | <a href="#">16</a> |
| <a href="#">3.6.</a>     | <a href="#">Impact on Network Operation.....</a>                          | <a href="#">17</a> |
| <a href="#">4.</a>       | <a href="#">Security Considerations.....</a>                              | <a href="#">17</a> |
| <a href="#">5.</a>       | <a href="#">IANA Considerations.....</a>                                  | <a href="#">17</a> |
| <a href="#">6.</a>       | <a href="#">References.....</a>   | <a href="#">17</a> |
| <a href="#">6.1.</a>     | <a href="#">Normative References.....</a>                                 | <a href="#">17</a> |
| <a href="#">6.2.</a>     | <a href="#">Informative References.....</a>                               | <a href="#">18</a> |
|                          | <a href="#">Authors' Addresses.....</a>                                   | <a href="#">18</a> |
| <a href="#">7.</a>       | <a href="#">Acknowledgments.....</a>                                      | <a href="#">19</a> |

## [1. Introduction](#)

[RFC4655] defines the PCE based architecture and explains how a Path Computation Element (PCE) may compute Label Switched Paths (LSP) in Multiprotocol Label Switching Traffic Engineering (MPLS-TE) and Generalized MPLS (GMPLS) networks at the request of Path Computation Clients (PCCs). A PCC is shown to be any network component that makes such a request and may be for instance an Optical Switching Element within a Wavelength Division Multiplexing (WDM) network. The PCE, itself, can be located anywhere within the network, and may be within an optical switching element, a Network Management System (NMS) or Operational Support System (OSS), or may be an independent network server.



The PCE communication Protocol (PCEP) is the communication protocol used between PCC and PCE, and may also be used between cooperating PCEs. [\[RFC4657\]](#) sets out the common protocol requirements for PCEP. Additional application-specific requirements for PCEP are deferred to separate documents.

This document provides a set of application-specific PCEP requirements for support of path computation in Wavelength Switched Optical Networks (WSON) with impairments. WSON refers to WDM based optical networks in which switching is performed selectively based on the wavelength of an optical signal.

The path in WSON is referred to as an optical path. An optical path may span multiple fiber links and the path should be assigned a wavelength for each link. A transparent optical network is made up of optical devices that can switch but not convert from one wavelength to another. In a transparent optical network, an optical path operates on the same wavelength across all fiber links that it traverses. In such case, the optical path is said to satisfy the wavelength-continuity constraint. Two optical paths that share a common fiber link can not be assigned the same wavelength. To do otherwise would result in both signals interfering with each other. Note that advanced additional multiplexing techniques such as polarization based multiplexing are not addressed in this document since the physical layer aspects are not currently standardized. Therefore, assigning the proper wavelength on an optical path is an essential requirement in the optical path computation process.

When a switching node has the ability to perform wavelength conversion the wavelength-continuity constraint can be relaxed, and a may use different wavelengths on different links along its route from origin to destination. It is, however, to be noted that wavelength converters may be limited due to their relatively high cost, while the number of WDM channels that can be supported in a fiber is also limited. As a WSON can be composed of network nodes that cannot perform wavelength conversion, nodes with limited wavelength conversion, and nodes with full wavelength conversion abilities, wavelength assignment is an additional routing constraint to be considered in all optical path computation.

One of the most basic questions in communications is whether one can successfully transmit information from a transmitter to a receiver within a prescribed error tolerance, usually specified as a maximum permissible bit error ratio (BER). This generally depends on the nature of the signal transmitted between the sender and receiver and the nature of the communications channel between the sender and





receiver. The optical path utilized (along with the wavelength) determines the communications channel.

The optical impairments incurred by the signal along the fiber and at each optical network element along the path determine whether the BER performance or any other measure of signal quality can be met for this particular signal on this particular path. Given the existing standards covering optical characteristics (impairments) and the knowledge of how the impact of impairments may be estimated along a path, [[RFC6566](#)] provides a framework for impairment aware path computation and establishment utilizing GMPLS protocols and the PCE architecture.

Some transparent optical subnetworks are designed such that over any path the degradation to an optical signal due to impairments never exceeds prescribed bounds. This may be due to the limited geographic extent of the network, the network topology, and/or the quality of the fiber and devices employed. In such networks the path selection problem reduces to determining a continuous wavelength from source to destination (the Routing and Wavelength Assignment problem). These networks are discussed in [[RFC6163](#)]. In other optical networks, impairments are important and the path selection process must be impairment-aware.

In this document we first review the processes for routing and wavelength assignment (RWA) used when wavelength continuity constraints are present. We then review the processes for optical impairment aware RWA (IA-RWA). Based on selected process models we then specify requirements for PCEP to support IA-RWA. Note that requirements for PCEP to support RWA are specified in a separate document [[RFC7449](#)].

The remainder of this document uses terminology from [[RFC4655](#)].

### **1.1. WSON RWA Processes (no impairments)**

In [[RFC6163](#)] three alternative process architectures were given for performing routing and wavelength assignment. These are shown schematically in Figure 1.



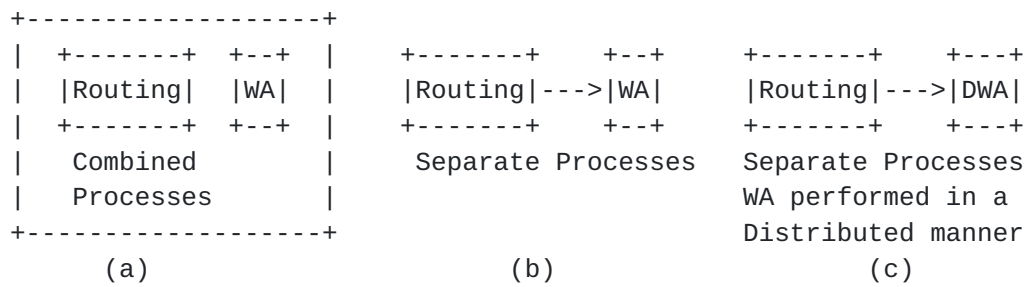


Figure 1

RWA process

alternatives.

Detail description of each alternative can be found in [[RFC6163](#)].

### 1.2. WSON IA-RWA Processes

In [[RFC6566](#)] impairments were addressed by adding an "impairment validation" (IV) process. For approximate impairment validation three process alternatives were given in [[RFC6566](#)] and are shown in Figure 2. Since there are many possible alternative combinations, these are just three examples. Please note that the requirements for all possible architectures can be reduced to the cases in Figure 3 in [section 2](#).

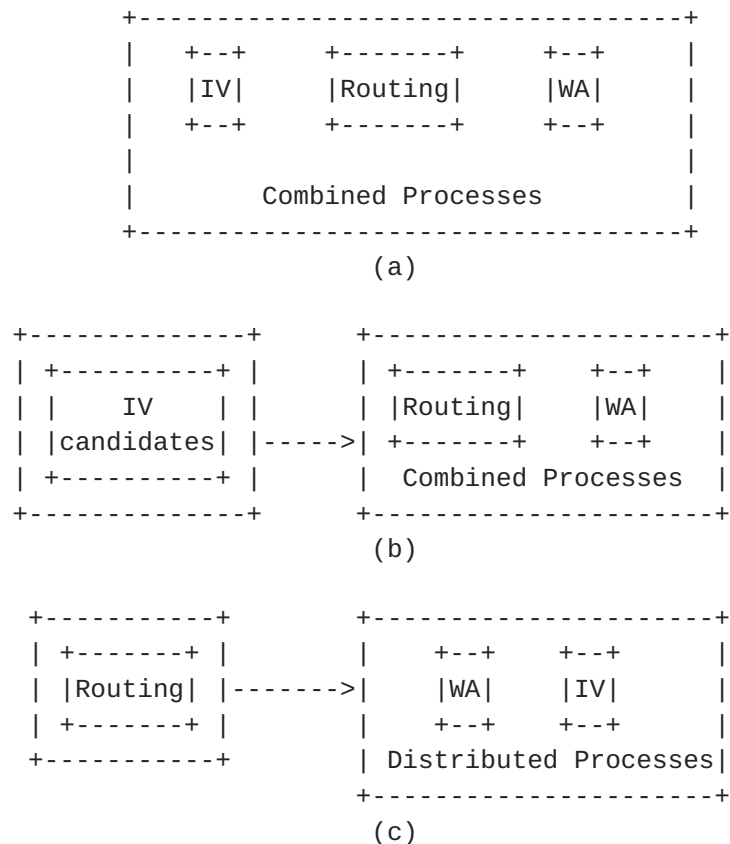


Figure 2 Process flows for the three main approximate architectural alternatives.

These alternatives have the following properties and impact on PCEP requirements in this document.

1. Combined IV and RWA Process - Here the processes of impairment validation, routing and wavelength assignment are aggregated into a single PCE. The requirements for PCC-PCE interaction with such a combined IV-RWA process PCE is addressed in this document.
2. IV-Candidates + RWA Process - As explained in [[RFC6566](#)] separating the impairment validation process from the RWA process maybe necessary to deal with impairment sharing constraints. In this architecture one PCE computes impairment candidates and another PCE uses this information while performing RWA. The requirements for PCE-to-PCE interaction of this architecture will be addressed in this document.



3. Routing + Distributed WA and IV - Here a standard path computation (unaware of detailed wavelength availability or optical impairments) takes place, then wavelength assignment and impairment validation is performed along this path in a distributed manner via signaling (RSVP-TE). This alternative should be covered by existing or emerging GMPLS PCEP extensions and does not present new WSON specific requirements.

## **2. WSON PCE Architectures and Requirements**

In the previous section we reviewed various process architectures for implementing RWA with and without regard for optical impairment. In Figure 3 we reduce these alternatives to two PCE based implementations. As specified in [\[RFC6566\]](#), the PCE in Figure 3(a) should be given the necessary information for RWA and impairment validation, including WSON topology, link wavelength utilization as well as impairment information such as the adjustment range of tunable parameters, etc. Similarly, RWA-PCE should be equipped with all the information other than impairment-related ones which is a necessity for IV-PCE.

In Figure 3(a) we show the three processes of routing, wavelength assignment and impairment validation accessed via a single PCE. The implementation details of the interactions of the processes are not subject to standardization; this document concerns only the PCC to PCE communications.

In Figure 3(b) the impairment validation process is implemented in a separate PCE. Here the RWA-PCE acts as a coordinator and the PCC to RWA-PCE interface will be the same as in Figure 3(a), however in this case we have additional requirements for the RWA-PCE to IV-PCE interface.

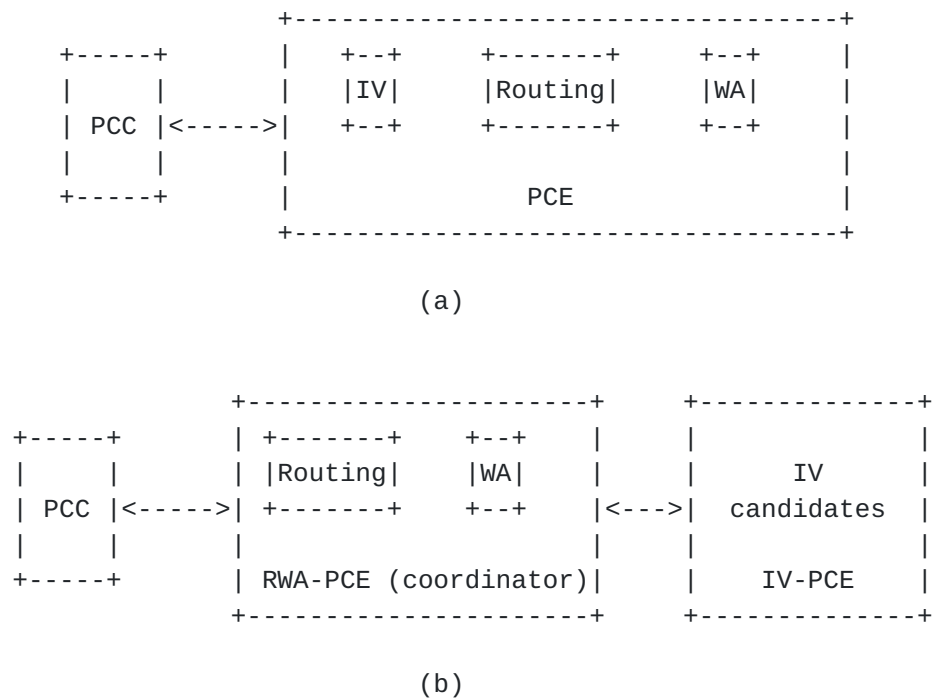


Figure 3

PCE architectures

for IA-RWA.

### 2.1. RWA PCC to PCE Interface

The PCC to PCE interface of Figure 3(a) and the PCC to RWA-PCE (coordinator) interface of Figure 3(b) are the same and we will cover both in this section. The following requirements for these interfaces are arranged by use cases:

#### 2.1.1. A new RWA path request

The PCReq Message MUST include one or more specific measures of optical signal quality to which all feasible paths should conform:

- o BER limit
- o OSNR + Margin
- o Power
- o PMD
- o Residual Dispersion (RD)
- o Q factor
- o TBD





(Editor's Note: this is not a complete list of optical signal quality measure and subject to further change.)

If the PCReq Message does not include the BER limit and no BER limit information related to the specific path request is provisioned at the PCE then the PCE will return an error specifying that a BER limit must be provided.

"Margin" means "insurance" (e.g. 3-6dB) for suppliers and operators which are set against unpredictable degradation and other degradation not included in the provided estimates such as that due to fiber nonlinearity.

In non-coherent WDM networks, PMD and CD should be carefully considered. However, coherent WDM networks usually have a high tolerance with these two optical signal quality measurements and thus it may not need to be considered.

#### 2.1.1.1. Signal Quality Measure TLV

This TLV represents all impairment constraints that need to be considered by the PCE to calculate a path that passes the requested measure of signal quality for a signal for a given source and destination.

This TLV is repeated one after another until all signal quality types are specified.

The TLV type is TBD.

The TLV data is defined as follow:

[illegible]

The P bit (1 bit): Indicates if the associated impairment is a path level or not.

The P bit is set to 1 indicates that the associated impairment is a path level. This means that the impairment is associated with the end-to-end path and the threshold must be satisfied on a path level.

The P bit is set to 0 indicates that the associated impairment is a link level. This means the impairment is associated with the link and the threshold must be satisfied on every link of the end-to-end path.

The Signal Quality Type (15 bits): indicates the kind of optical signal quality of interest.

0: reserved

1: BER limit

2: OSNR+ Margin

3: Power

4: PMD

5: CD

6: Q factor

7-up: Reserved for future use

Threshold (32 bits) indicates the threshold (upper or lower) to which the specified signal quality measure must satisfy for the path/link (depending on the P bit).

The reserved bits MUST be set to 0 on transmit and MUST be ignored on receive.

### 2.1.2. A new RWA path reply

The PCRep Message MUST include the route, wavelengths assigned to the route, and an indicator that says if the path conforms to the required quality or not. Moreover, it should also be able to specify a list of impairment compensation information along the chosen route, i.e., the value or value range of optical signal quality parameter that needs to be adjusted, such as power level, in order to achieve the resultant measure of signal quality as given in [Section 2.1.2.1](#). It is suggested to carry this information in the PCEP ERO object. According to [RFC5440], PCEP ERO object is identical to RSVP-TE ERO object. Therefore, it is suggested to modify the RSVP-TE ERO object to accommodate this need. This will be included in a separate draft in the future.

In the case where a valid path is not found, the PCRep Message MUST include why the path is not found (e.g., no route, wavelength not found, BER failure, etc.)

#### [2.1.2.1](#). Signal Quality Measure TLV

This TLV represents the result of the requested measure of signal quality for a signal for a given source and destination.

This TLV is repeated one after another until all signal quality types are specified.

The TLV type is TBD.

The TLV data is defined as follow:

```

0          1          2          3
0 1 2 3 4 5 6 7 8 9 0 1 2 3 4 5 6 7 8 9 0 1 2 3 4 5 6 7 8 9 0 1
+---+---+---+---+---+---+---+---+---+---+---+---+---+---+---+---+
|P| Signal Quality Type          |   Reserved   |
+---+---+---+---+---+---+---+---+---+---+---+---+---+---+---+---+
|                               Signal Quality Value                               |
+---+---+---+---+---+---+---+---+---+---+---+---+---+---+---+---+

```

The P bit (1 bit): Indicates if the associated signal quality measure has passed the threshold or not.

The P bit is set to 1 indicates that the associated signal quality measure has passed the threshold.

The P bit is set to 0 indicates that the associated signal quality measure has failed the threshold.

The Signal Quality Type (15 bits): indicates the kind of optical signal quality of interest.

0: reserved

1: BER limit

2: OSNR\_ Margin

3: Power

4: PMD

5: CD

6: Q factor

7-up: Reserved for future use

Signal Quality Value (32 bits) indicates the actual estimated value of the specified signal quality measure for the end-to-end path.

TBD: How to encode link based value needs to be determined in the revision.

The reserved bits MUST be set to 0 on transmit and MUST be ignored on reception.

## 2.2. RWA-PCE to IV-PCE Interface

In [RFC6566] a sequence diagram for the interaction of the PCC, RWA-PCE and IV-PCE of Figure 3(b) was given and is repeated here in Figure 4. The interface between the PCC and the RWA-PCE (acting as the coordinator) was covered in [section 2.1](#).

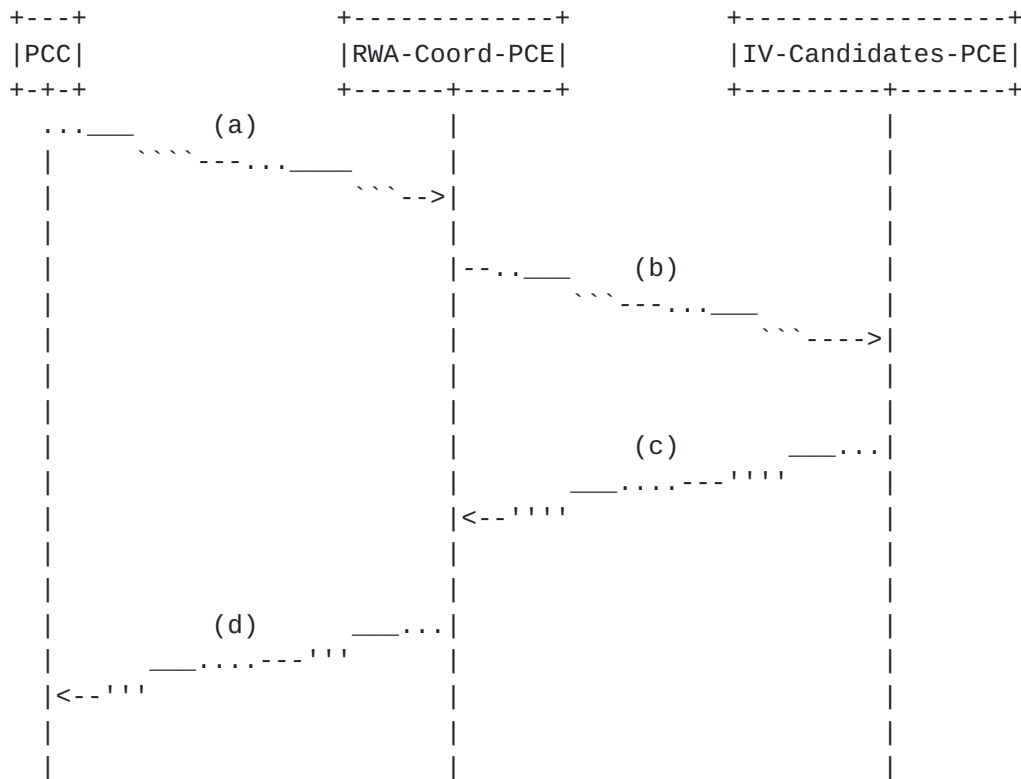


Figure 4 Sequence diagram for the interactions between PCC, RWA-Coordinating-PCE and the IV-Candidates-PCE.

The interface between the RWA-Coord-PCE and the IV-Candidates-PCE is specified by the following requirements:

1. The PCReq Message from the RWA-Coord-PCE to the IV-Candidate-PCE MUST include an indicator that more than one (candidate) path between source and destination is desired.
2. The PCReq message from the RWA-Coord-PCE to the IV-Candidates-PCE MUST include a limit on the number of optical impairment qualified paths to be returned by the IV-PCE.



3. The PCReq message from the RWA-Coord-PCE to the IV-Candidates-PCE MAY include wavelength constraints. Note that optical impairments are wavelength sensitive and hence specifying a wavelength constraint may help limit the search for valid paths. This requirement has been already covered in [[RFC7449](#)] and is presented here for an illustration purpose.
4. The PCRep Message from the IV-Candidates-PCE to RWA-Coord-PCE MUST include a set of optical impairment qualified paths along with any wavelength constraints on those paths.
5. The PCRep Message from the IV-Candidates-PCE to RWA-Coord-PCE MUST indicate "no path found" in case where a valid path is not found.
6. The PCReq Message from the RWA-Coord-PCE to the IV-Candidate-PCE MAY include one or more specified paths and wavelengths that is to be verified by the IV-PCE. This requirement is necessary when the IV-PCE is allowed to verify specific paths.

Note that once the RWA-Coord-PCE receives the resulting paths from the IV Candidates PCE, then the RWA-Coord-PCE computes RWA for the IV qualified candidate paths and sends the result back to the PCC.

#### 2.2.1. A new impairment-validated (IV) path request

Details on encoding are TBD.

#### 2.2.2. A new impairment-validated (IV) path reply

Details on encoding are TBD.

### **3. Manageability Considerations**

Manageability of WSON Routing and Wavelength Assignment (RWA) with PCE must address the following considerations:

#### **3.1. Control of Function and Policy**

In addition to the parameters already listed in [Section 8.1 of \[RFC5440\]](#), a PCEP implementation SHOULD allow configuring the following PCEP session parameters on a PCC:

- o The ability to send a WSON IA-RWA request.





In addition to the parameters already listed in [Section 8.1 of \[RFC5440\]](#), a PCEP implementation SHOULD allow configuring the following PCEP session parameters on a PCE:

- o The support for WSON IA-RWA.
- o The maximum number of synchronized path requests associated with WSON IA-RWA per request message.
- o A set of WSON IA-RWA specific policies (authorized sender, request rate limiter, etc).

These parameters may be configured as default parameters for any PCEP session the PCEP speaker participates in, or may apply to a specific session with a given PCEP peer or a specific group of sessions with a specific group of PCEP peers.

### **[3.2.](#) Information and Data Models, e.g. MIB module**

Extensions to the PCEP MIB module defined in [PCEP-MIB] should be defined, so as to cover the WSON IA-RWA information introduced in this document. A future revision of this document will list the information that should be added to the MIB module.

### **[3.3.](#) Liveness Detection and Monitoring**

Mechanisms defined in this document do not imply any new liveness detection and monitoring requirements in addition to those already listed in [section 8.3 of \[RFC5440\]](#).

### **[3.4.](#) Verifying Correct Operation**

Mechanisms defined in this document do not imply any new verification requirements in addition to those already listed in [section 8.4 of \[RFC5440\]](#)

### **[3.5.](#) Requirements on Other Protocols and Functional Components**

The PCE Discovery mechanisms ([[RFC5089](#)] and [[RFC5088](#)]) may be used to advertise WSON IA-RWA path computation capabilities to PCCs.

### **3.6. Impact on Network Operation**

Mechanisms defined in this document do not imply any new network operation requirements in addition to those already listed in [section 8.6 of \[RFC5440\]](#).

## **4. Security Considerations**

This document has no requirement for a change to the security models within PCEP [PCEP]. However the additional information distributed in order to address the RWA problem represents a disclosure of network capabilities that an operator may wish to keep private. Consideration should be given to securing this information.

## **5. IANA Considerations**

A future revision of this document will present requests to IANA for codepoint allocation.

## **6. References**

### **6.1. Normative References**

- [RFC2119] Bradner, S., "Key words for use in RFCs to Indicate Requirement Levels", [BCP 14](#), [RFC 2119](#), March 1997.
- [RFC3471] Berger, L., "Generalized Multi-Protocol Label Switching (GMPLS) Signaling Functional Description", [RFC 3471](#), January 2003.
- [RFC3473] Berger, L., Ed., "Generalized Multi-Protocol Label Switching (GMPLS) Signaling Resource ReserVation Protocol-Traffic Engineering (RSVP-TE) Extensions", [RFC 3473](#), January 2003.
- [RFC5440] Vasseur, JP., Ed. and JL. Le Roux, Ed., "Path Computation Element (PCE) communication Protocol (PCEP)", [RFC 5440](#), March 2009.

## 6.2. Informative References

- [RFC6163] Lee, Y. and Bernstein, G., W. Imajuku, "Framework for GMPLS and PCE Control of Wavelength Switched Optical Networks", [RFC 6163](#), April 2011.
- [RFC6566] Lee, Y. and Bernstein, G. (Editors), and D. Li, "Framework for GMPLS and PCE Control of Wavelength Switched Optical Networks", [RFC 6566](#), March, 2012.
- [RFC7449] Y. Lee, G. Bernstein, J. Martensson, T. Takeda and T. Otani, "PCEP Requirements for WSON Routing and Wavelength Assignment", [RFC 7449](#), February 2015.
- [RFC5088] Le Roux, JL., Ed., Vasseur, JP., Ed., Ikejiri, Y., and R. Zhang, "OSPF Protocol Extensions for Path Computation Element (PCE) Discovery", [RFC 5088](#), January 2008.
- [RFC5089] Le Roux, JL., Ed., Vasseur, JP., Ed., Ikejiri, Y., and R. Zhang, "IS-IS Protocol Extensions for Path Computation Element (PCE) Discovery", [RFC 5089](#), January 2008.
- [RFC4655] Farrel, A., Vasseur, J., and J. Ash, "A Path Computation Element (PCE)-Based Architecture", [RFC 4655](#), August 2006.
- [RFC4657] Ash, J. and J. Le Roux, "Path Computation Element (PCE) Communication Protocol Generic Requirements", [RFC 4657](#), September 2006.
- [RFC8174] B. Leiba, "Ambiguity of Uppercase vs Lowercase in [RFC 2119](#) Key Words", [RFC 8174](#), May 2017.

### Authors' Addresses

Young Lee (Ed.)  
Huawei Technologies  
Email: leeyoung@huawei.com

Greg Bernstein (Ed.)  
Grotto Networking  
Fremont, CA, USA  
Phone: (510) 573-2237  
Email: gregb@grotto-networking.com

Jonas Martensson  
Acreo  
Email: Jonas.Martensson@acreo.se

Tomonori Takeda  
NTT Corporation  
3-9-11, Midori-Cho  
Musashino-Shi, Tokyo 180-8585, Japan  
Email: takeda.tomonori@lab.ntt.co.jp

Takehiro Tsuritani  
2-1-15 Ohara, Fujimino, Saitama, 356-8502, JAPAN  
KDDI R&D Laboratories Inc.  
Phone: +81-49-278-7806  
Email: tsuri@kddilabs.jp

Xian Zhang  
Huawei Technologies  
F3-5-B R&D Center, Huawei Base  
Bantian, Longgang District  
Shenzhen 518129 P.R.China

Phone: +86-755-28972913  
Email: zhang.xian@huawei.com

## **7. Acknowledgments**

This document was prepared using 2-Word-v2.0.template.dot.

Copyright (c) 2018 IETF Trust and the persons identified as authors of the code. All rights reserved.

Redistribution and use in source and binary forms, with or without modification, are permitted provided that the following conditions are met:

- o Redistributions of source code must retain the above copyright notice, this list of conditions and the following disclaimer.



- o Redistributions in binary form must reproduce the above copyright notice, this list of conditions and the following disclaimer in the documentation and/or other materials provided with the distribution.
- o Neither the name of Internet Society, IETF or IETF Trust, nor the names of specific contributors, may be used to endorse or promote products derived from this software without specific prior written permission.

THIS SOFTWARE IS PROVIDED BY THE COPYRIGHT HOLDERS AND CONTRIBUTORS "AS IS" AND ANY EXPRESS OR IMPLIED WARRANTIES, INCLUDING, BUT NOT LIMITED TO, THE IMPLIED WARRANTIES OF MERCHANTABILITY AND FITNESS FOR A PARTICULAR PURPOSE ARE DISCLAIMED. IN NO EVENT SHALL THE COPYRIGHT OWNER OR CONTRIBUTORS BE LIABLE FOR ANY DIRECT, INDIRECT, INCIDENTAL, SPECIAL, EXEMPLARY, OR CONSEQUENTIAL DAMAGES (INCLUDING, BUT NOT LIMITED TO, PROCUREMENT OF SUBSTITUTE GOODS OR SERVICES; LOSS OF USE, DATA, OR PROFITS; OR BUSINESS INTERRUPTION) HOWEVER CAUSED AND ON ANY THEORY OF LIABILITY, WHETHER IN CONTRACT, STRICT LIABILITY, OR TORT (INCLUDING NEGLIGENCE OR OTHERWISE) ARISING IN ANY WAY OUT OF THE USE OF THIS SOFTWARE, EVEN IF ADVISED OF THE POSSIBILITY OF SUCH DAMAGE.

