

Internet Engineering Task Force  
Internet-Draft  
Intended status: Informational  
Expires: January 10, 2013

Y. Le Louedec  
A. Marrec  
G. Bertrand  
France Telecom - Orange  
M. Pilarski  
Orange Polska / WUT  
July 9, 2012

**CDNI Request Routing**  
**draft-lelouedec-cdni-request-routing-00**

**Abstract**

The present document proposes to clarify the CDNI Request Routing interface introduced in [[I-D.ietf-cdni-framework](#)] and [[I-D.ietf-cdni-problem-statement](#)], as well as related terminology.

In particular the present document proposes to split the CDNI Request Routing interface into two separate interfaces with clearer roles, named respectively CDNI Routing interface and CDNI Downstream Resource Identifier Signaling interface (CDNI DRIS interface).

This part of the CDN interconnection framework the IETF has been referring to so far with the term "CDNI Request Routing" is just another routing, signaling and forwarding problem in a long series of the telecommunication history. For example, one can draw a direct analogy between the IP/MPLS-TE framework and the CDN interconnection framework.

In addition, this document recommends that the specification of ALL CDN interconnection interfaces in the scope of the CDNI IETF WG relies on the equivalent concept to IP prefix for CDN interconnection, named 'contentRequestScope'. This highly useful and powerful concept SHALL be used to simplify the specification of ALL CDN interconnection interfaces, as well as to ensure performance and scalability in CDN interconnection.

All these proposals can be smoothly integrated in the WG drafts, especially [[I-D.ietf-cdni-framework](#)] and [[I-D.ietf-cdni-requirements](#)], as they essentially propose (useful) clarifications of the existing framework.

**Status of this Memo**

This Internet-Draft is submitted in full conformance with the provisions of [BCP 78](#) and [BCP 79](#).

Internet-Drafts are working documents of the Internet Engineering Task Force (IETF). Note that other groups may also distribute working documents as Internet-Drafts. The list of current Internet-Drafts is at <http://datatracker.ietf.org/drafts/current/>.

Internet-Drafts are draft documents valid for a maximum of six months and may be updated, replaced, or obsoleted by other documents at any time. It is inappropriate to use Internet-Drafts as reference material or to cite them other than as "work in progress."

This Internet-Draft will expire on January 10, 2013.

#### Copyright Notice

Copyright (c) 2012 IETF Trust and the persons identified as the document authors. All rights reserved.

This document is subject to [BCP 78](#) and the IETF Trust's Legal Provisions Relating to IETF Documents (<http://trustee.ietf.org/license-info>) in effect on the date of publication of this document. Please review these documents carefully, as they describe your rights and restrictions with respect to this document. Code Components extracted from this document must include Simplified BSD License text as described in Section 4.e of the Trust Legal Provisions and are provided without warranty as described in the Simplified BSD License.



## Table of Contents

<a href="#">1.</a>	Introduction . . . . .	<a href="#">4</a>
<a href="#">2.</a>	Motivations and Terminology Clarifications . . . . .	<a href="#">4</a>
<a href="#">2.1.</a>	The CDNI Request Routing interface should be split . . . . .	<a href="#">5</a>
2.2.	The routing function of the CDNI Request Routing interface should be clarified . . . . .	<a href="#">6</a>
<a href="#">2.3.</a>	CDNI request redirection strategies . . . . .	<a href="#">7</a>
<a href="#">3.</a>	Overview of the CDNI Routing interface . . . . .	<a href="#">8</a>
4.	The CDNI Downstream Resource Identifier Signaling (DRIS) Interface . . . . .	<a href="#">11</a>
<a href="#">4.1.</a>	Overview of the CDNI DRIS interface . . . . .	<a href="#">11</a>
<a href="#">4.2.</a>	Overview of CDNI DRIS operations . . . . .	<a href="#">15</a>
<a href="#">4.2.1.</a>	Case of iterative CDNI request redirection . . . . .	<a href="#">16</a>
<a href="#">4.2.2.</a>	Case of recursive CDNI request redirection . . . . .	<a href="#">18</a>
<a href="#">4.3.</a>	Key points to note about the CDNI DRIS interface . . . . .	<a href="#">23</a>
5.	CDNI request routing is just another routing and signaling problem . . . . .	<a href="#">24</a>
<a href="#">6.</a>	Conclusion and recommendations . . . . .	<a href="#">26</a>
<a href="#">7.</a>	Acknowledgments . . . . .	<a href="#">27</a>
<a href="#">8.</a>	IANA Considerations . . . . .	<a href="#">28</a>
<a href="#">9.</a>	Security Considerations . . . . .	<a href="#">28</a>
<a href="#">10.</a>	Informative References . . . . .	<a href="#">28</a>
<a href="#">Appendix A.</a>	Proposal for <a href="#">Section 4.2</a> of CDNI framework draft . . . . .	<a href="#">28</a>
	Authors' Addresses . . . . .	<a href="#">29</a>



## 1. Introduction

The present document proposes to clarify the CDNI Request Routing interface introduced in [[I-D.ietf-cdni-framework](#)] and [[I-D.ietf-cdni-problem-statement](#)], as well as the related terminology.

In particular the present document proposes to split the CDNI Request Routing interface into two separate interfaces with clearer roles, named respectively CDNI Routing interface and CDNI Downstream Resource Identifier Signaling interface (CDNI DRIS interface).

[Section 2](#) presents the motivations for splitting the CDNI Request Routing interface. It also proposes to review and to expand the terminology about the terms iterative request routing and recursive request routing.

[Section 3](#) and [Section 4](#) provide a short overview respectively of the CDNI Routing interface and of the CDNI DRIS interface. The detailed specifications of each of these interfaces will be made public shortly by the authors in dedicated IETF drafts.

[Section 5](#) provides an analogy with IP/MPLS-TE framework. This just aims at helping readers to understand the proposals and recommendations in this document.

[Section 6](#) concludes this draft with recommendations for the IETF CDNI WG. This includes recommendations about the CDNI WG charter, as well as about [[I-D.ietf-cdni-framework](#)] and [[I-D.ietf-cdni-requirements](#)].

[Appendix A](#) proposes a text to replace Section 4.2 of [[I-D.ietf-cdni-framework](#)].

## 2. Motivations and Terminology Clarifications

[Section 2.1](#) and [Section 2.2](#) present the motivations for splitting and clarifying the CDNI Request Routing interface.

This document adopts the terminology described in [[I-D.ietf-cdni-problem-statement](#)] and [[I-D.ietf-cdni-framework](#)], except for the terms 'iterative request routing' and 'recursive request routing'. [Section 2.3](#) proposes to review and to expand the terminology about these two terms.

In addition this document extends this terminology with the terms 'CDNI routing interface', 'CDNI DRIS interface' and 'contentRequestScope' introduced and illustrated respectively in Sections [3](#), [4](#), and [5](#). It also introduces the term 'delivery



resource'. From the perspective of the uCDN, a delivery resource is a delivery node or a request routing system towards which a content request may be redirected: either a delivery node inside the uCDN, or the request routing system of a CDN different from the uCDN, or a delivery node within a CDN different from the upstream CDN.

### **2.1. The CDNI Request Routing interface should be split**

One key message of the present document is that the term "CDNI Request Routing" is confusing as it makes a mix-up of two clearly different sets of processes and interfaces.

As described in [[I-D.ietf-cdni-problem-statement](#)], the CDNI Request Routing interface's role is twofold:

1. "To enable a downstream CDN to provide to the upstream CDN (static or dynamic) information (e.g., resources, footprint, load) to facilitate selection of the downstream CDN by the upstream CDN request routing system when processing subsequent content requests from User Agents."
2. "To allow the downstream CDN to control what the upstream Request Routing function should return to the User Agent in the redirection message."

These two functions are fundamentally different. Besides, depending on the considered use cases, described in [[I-D.ietf-cdni-use-cases](#)], they could be implemented differently (e.g., the first function could be implemented manually while the second function would be implemented with a network protocol, or vice versa, or they could rely on different network protocols, etc.).

This idea that the request routing interface comprises two parts has started to be visible in the latest version of the Section 4.2 in [[I-D.ietf-cdni-framework](#)]. We think that it is a good first step that requires clarifications. Indeed, [[I-D.ietf-cdni-framework](#)] mentions a 'synchronous part' that makes again a mix-up between operations involving communications with the user agent and operations only between the CDNs. And the latter ones can be purely asynchronous operations in some cases, as illustrated in [Section 4](#) of the present memo.

Therefore, in order to simplify and accelerate the specification of the CDNI interfaces, the present document proposes to split the current CDNI Request Routing interface into two separate interfaces with clearer roles, further detailed in [Section 3](#) and [Section 4](#) respectively:





1. The CDNI Routing Interface
2. The CDNI Downstream Resource Identifier Signaling (DRIS) Interface.

## **2.2. The routing function of the CDNI Request Routing interface should be clarified**

Quoting [[I-D.ietf-cdni-problem-statement](#)], "The CDNI Request Routing interface enables a Request Routing function in an upstream CDN to query a Request Routing function in a downstream CDN to determine if the downstream CDN is able (and willing) to accept the delegated content request".

The "ability" and the "willingness" of the downstream CDN to accept the delegated content request match two fully different processes in CDN interconnection. And the description of both these processes should be reviewed and clarified for the following reasons:

- o Regarding the former process, i.e. related to the "ability" ("enables a Request Routing function in an upstream CDN to query a Request Routing function in a downstream CDN to determine if the downstream CDN is able (...) to accept the delegated content request"), a routing protocol is used to achieve such a process, called routing process, in many other technologies and networks (IP, ATM, etc.). In all these technologies, it is the downstream entity that provides routing information to the upstream entity. The same approach should be applied to CDN interconnection. The reverse approach ("uCDN queries its downstream CDNs dCDN 1, dCDN 2, dCDN 3, and then it selects one of them based on their responses") would suffer from latency, signaling overhead and/or lack of reactivity to events that impact the ability of the downstream CDNs to accept delegated content requests.
- o Regarding the latter process, i.e. related to the "willingness" ("enables a Request Routing function in an upstream CDN to query a Request Routing function in a downstream CDN to determine if the downstream CDN (...) is willing (...) to accept the delegated content request"), it is to be noted that the relationship between a uCDN and a dCDN is always in the frame of a contractual agreement between the administrative entity owning the uCDN, acting as the customer, and the administrative entity owning the dCDN, acting as the service provider. Therefore, consider a case where
  - \* the uCDN has a content request to redirect which is in full conformance with the terms of this contractual agreement, and



- \* the uCDN has selected this dCDN.

As the uCDN knows, thanks to the routing information exchanged via the aforementioned routing process, that the dCDN is able to accept this content request, the uCDN MAY redirect the content request to the dCDN and the dCDN MUST accept the content request. Exchanging over the CDNI Request Routing interface information about the "willingness" of the dCDN to accept the content request is not relevant.

### **2.3. CDNI request redirection strategies**

The terms "Iterative CDNI request routing" and "Recursive CDNI request routing" are defined in [[I-D.ietf-cdni-framework](#)]. As explained above the term "CDNI request routing" is confusing, therefore, the present document proposes to use the terms "Iterative CDNI request redirection" and "Recursive CDNI request redirection" instead. We consider that these new terms are more appropriate than the definitions provided in [[I-D.ietf-cdni-framework](#)].

The definition of "Recursive CDNI request routing" given in [[I-D.ietf-cdni-framework](#)] indicates "...that the Downstream CDN may elect to have the request redirected directly to a delivery node inside the Downstream CDN, to the Request-Routing System of the Downstream CDN, to another CDN, or to any other system that the Downstream CDN sees as fit for handling the redirected request."

In order to clarify this point, and for the purpose of [Section 3](#) to [Section 6](#), the present document introduces the terms "full-recursive CDNI request redirection" and "semi-recursive CDNI request redirection".

Full-recursive CDNI request redirection and semi-recursive CDNI request redirection are two subtypes of recursive CDNI request redirection. A recursive CDNI request redirection is either a full-recursive CDNI request redirection or a semi-recursive request redirection.

"Full-recursive CDNI request redirection" refers to the case where the considered CDN redirects the content request directly to a delivery node of another CDN, as illustrated in Figure 4. It means the content request is redirected:

- o either directly to a delivery node inside the Downstream CDN,
- o or directly to a delivery node inside a downstream CDN of the downstream CDN,



- o or directly to a delivery node inside a downstream CDN of a downstream CDN of the downstream CDN,
- o etc. (anyway directly to a delivery node).

In contrast, "semi-recursive CDNI request redirection" refers to the case, illustrated on Figure 5, where the considered CDN does not directly redirect the content request to a delivery node. It means the request is redirected:

- o either to the request routing system of the Downstream CDN that will deliver the content
- o or to the request routing system of another CDN that will deliver the content and that is a downstream CDN of the downstream CDN,
- o or to the request routing system of another CDN that will deliver the content and that is a downstream CDN of a downstream CDN of the downstream CDN,
- o etc. (anyway not directly to a delivery node).

Full-recursive redirection has the advantage over semi-recursive redirection of being more transparent from the user agent's perspective, but the disadvantage of the downstream CDN exposing more of its internal structure (in particular, the addresses of delivery nodes) to the upstream CDN (and possibly to the upstream CDN(s) of its upstream CDN, etc.). By contrast, semi-recursive redirection does not require dCDN to expose the addresses of its delivery nodes to uCDN. The specifications for the CDNI interfaces elaborated within the IETF CDNI WG MUST allow to support both these recursive CDNI request redirection strategies.

### **3. Overview of the CDNI Routing interface**

The CDNI routing interface is dedicated to the CDNI routing process. The CDNI routing process consists in the advertisement of CDNI routing information from the downstream CDN to the upstream CDN.

Note: The upstream CDN never provides the downstream CDN with any CDNI routing information.

CDNI routing information details "capabilities" of the downstream CDN that the upstream CDN must take into account in its CDN selection process. The CDN selection process consists for the upstream CDN to select the CDN (either the upstream CDN or one of its downstream CDN(s)) that should handle the content request the upstream CDN



receives from the user agent.

Note: The term "capabilities" refer to the capacity of the downstream CDN to handle correctly content requests from user agents. It does not necessarily mean that the downstream CDN will satisfy (alone) all these content requests by delivering the requested content to the user agent. Indeed the downstream CDN may have its own downstream CDN(s) and may decide that some or all of these content requests will be handled by its own downstream CDN(s).

Figure 1 provides a short illustration of the CDNI routing interface. The upstream CDN on Figure 1 has two downstream CDNs: CDN1 and CDN2.

Via their respective CDNI routing interfaces established with the upstream CDN, CDN1 and CDN2 provide the upstream CDN with CDNI routing information about the capabilities that they offer to the upstream CDN in the frame of their respective CDNI agreements contracted with the upstream CDN.

The inner architecture of the upstream CDN is beyond the scope of the current charter of the IETF CDNI WG. Figure 1 provides a high level representation of a possible implementation just in order to ease understanding of the global picture.

Basically and typically, the CDNI routing information received from CDN1 and CDN2 will feed a CDNI routing table controlled by a routing module in the upstream CDN. And every time the upstream CDN receives a content request from a user agent (either a DNS request in case of DNS based request redirection, or an HTTP request in case of HTTP based request redirection, etc.), its CDN selection module (in charge of the CDN selection process) will consult this CDNI routing module to decide about which CDN will handle this request (the upstream CDN, CDN1, or CDN2). In the example on Figure 1, the upstream CDN selects CDN 2 for the considered content request.





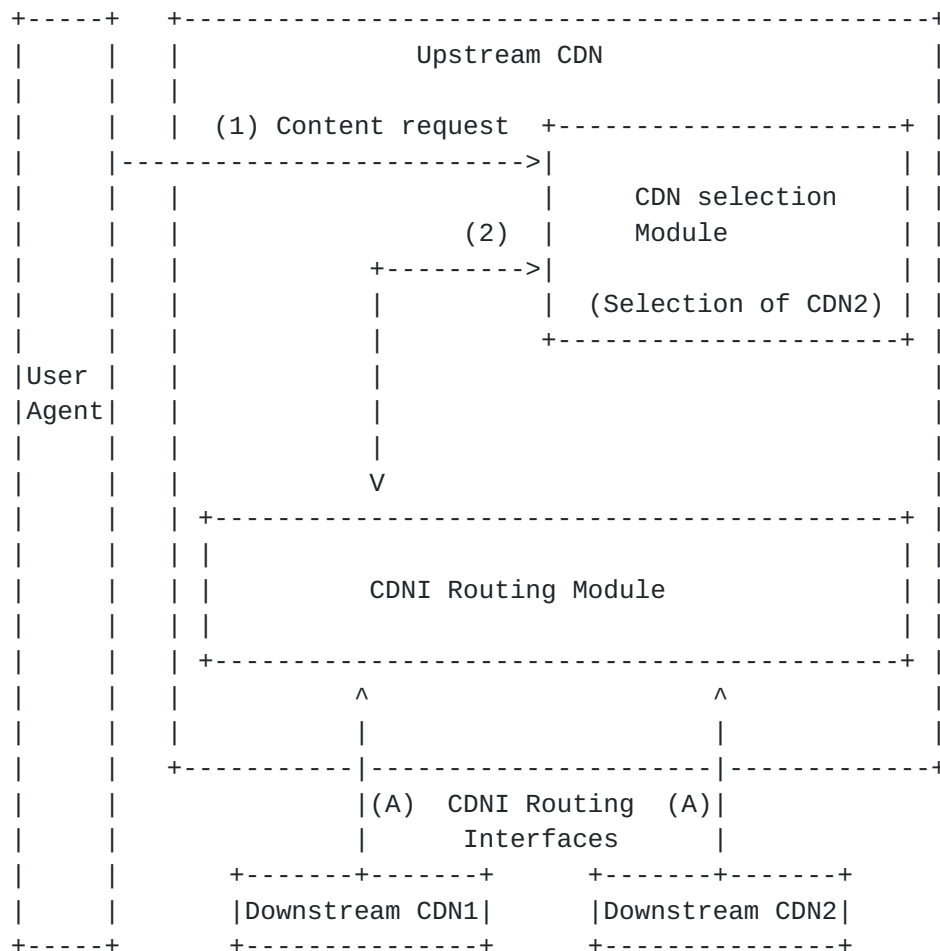


Figure 1: CDNI routing interface

The operations shown on Figure 1 are as follows:

1. A content request from a user agent (and/or from an intermediate local DNS in case it is a DNS request) arrives at the upstream CDN.
2. Within the upstream CDN, the CDN selection module consults the routing module to decide which CDN will handle this content request (i.e. whether it will be the upstream CDN or one of its downstream CDNs). The interface between these internal modules is out of standardization scope.

A. The operations achieved over the CDNI Routing interfaces aim at providing all information about the capabilities offered by the downstream CDNs to the upstream CDN in the frame of their respective CDNI agreements contracted with the upstream CDN.



The operations referenced with numeric indexes on Figure 1 ("1", "2") show a time dependency: every time the upstream CDN receives a content request ("1") its CDN selection process consults the routing table ("2").

In contrast, Routing information is to be exchanged continuously, with keep alive and update messages. There is no time dependency between the content requests received by the upstream CDN and the operations over the CDNI routing interfaces. By reference to the terminology used in [[I-D.ietf-cdni-framework](#)], CDNI Routing operations are asynchronous. The CDNI routing interfaces are referenced with an alphabetic index ("A") on Figure 1 to reflect this point.

#### **4. The CDNI Downstream Resource Identifier Signaling (DRIS) Interface**

##### **4.1. Overview of the CDNI DRIS interface**

AFTER the CDN selection process is achieved by the upstream CDN for a given content request (see [Section 3](#)), the upstream CDN MUST generate a response redirecting that content request towards the selected delivery resource by using in this response an identifier of that selected delivery resource.

The selected delivery resource can be:

1. Either a delivery node within the upstream CDN

This corresponds to the case where the CDN selection process of the upstream CDN selects the upstream CDN for that content request. In this case, the upstream CDN delivers the requested content to the client through one of its delivery nodes. The selected delivery resource is the upstream CDN's delivery node.

2. Or the request routing system of a CDN different from the upstream CDN

This corresponds to the case where the upstream CDN did select a downstream CDN for that content request, and where the CDNI request redirection strategy between the upstream CDN and this downstream CDN is based either on the iterative mode or on the semi-recursive mode. If the CDNI request redirection strategy between the uCDN and the dCDN is based on the iterative mode, the CDN to which the request routing system belongs is the downstream CDN selected by the upstream CDN for that content request (see Figure 3: Iterative CDNI request redirection). If the CDNI request redirection strategy between the uCDN and the dCDN is based on the semi-recursive mode, the CDN to



which that request routing system belongs can possibly be

- o the downstream CDN selected by the upstream CDN for that content request, or
- o a downstream CDN of that downstream CDN, or
- o a downstream CDN of a downstream CDN of that downstream CDN,
- o etc.,

due to the recursive nature of this mode (see Figure 5).

### 3. Or a delivery node within a CDN different from the upstream CDN

This corresponds to the case where the upstream CDN did select a downstream CDN for that content request, and where the CDNI request redirection strategy between the upstream CDN and this downstream CDN is based on the full-recursive mode.

The CDN to which the selected delivery node belongs can possibly be a delivery node within the downstream CDN selected by the upstream CDN for that content request, or a delivery node within a downstream CDN of that downstream CDN, or a delivery node within a downstream CDN of a downstream CDN of that downstream CDN, etc., due to the recursive nature of this mode (see Figure 4: Full-recursive CDNI request redirection).

In the cases "2." and "3.", the downstream CDN MUST provide the identifier of the selected delivery resource to the upstream CDN. The downstream CDN uses the CDNI DRIS interface to provide the upstream CDN with this identifier called "Downstream Resource Identifier" (DRI).

Note. In the recursive modes (full-recursive and semi-recursive) the upstream CDN does not need to know if the selected delivery resource belongs to the downstream CDN that the uCDN selected for that content request or to another CDN (i.e. to one downstream CDN of this downstream CDN, or to one downstream CDN of one downstream CDN of this downstream CDN, etc.). The upstream CDN just needs to get from the selected downstream CDN the "Downstream Resource Identifier" (DRI) of the selected delivery resource, so as to generate with this identifier a response redirecting that content request towards that selected delivery resource.



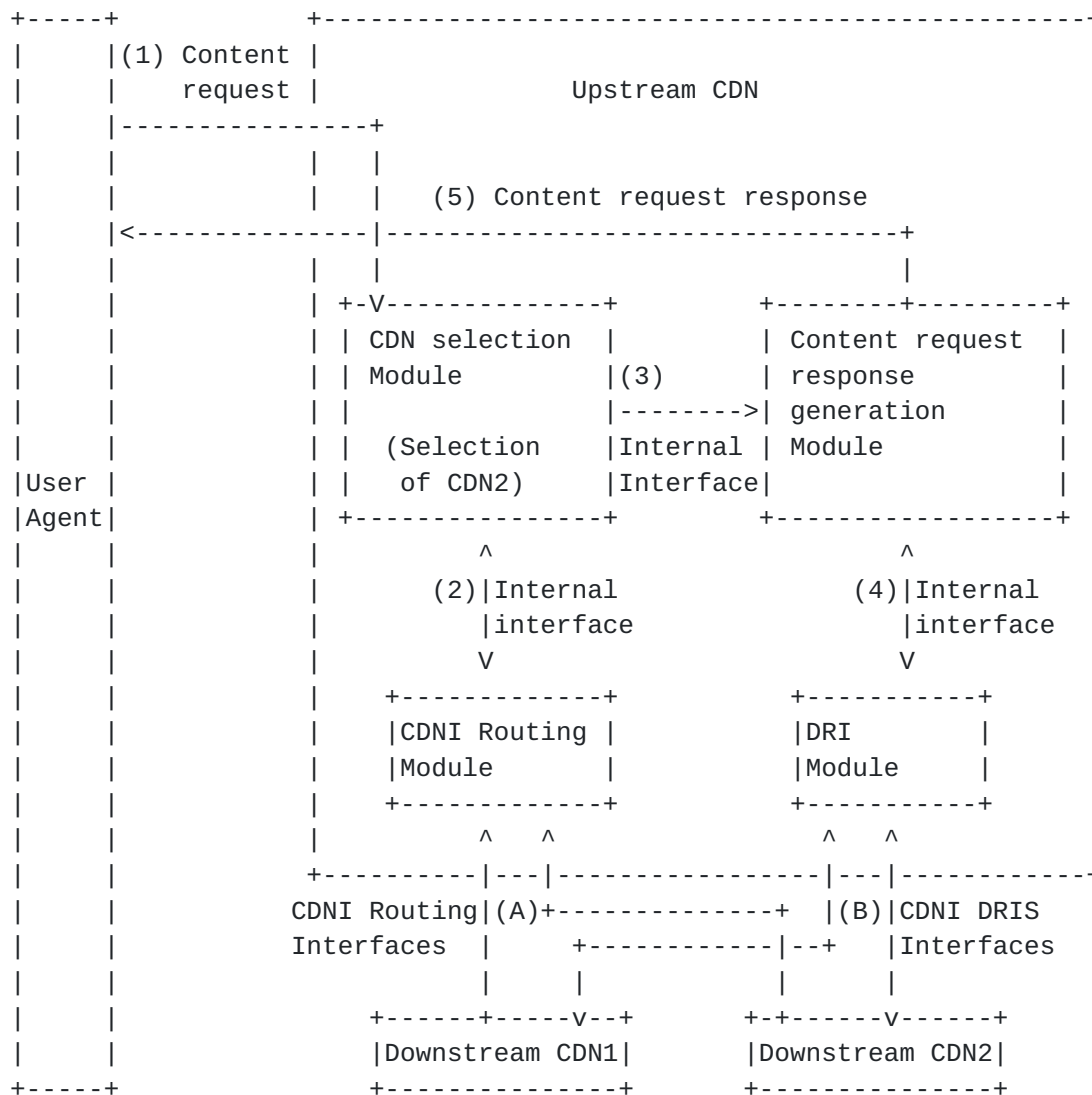


Figure 2: CDNI DRIS interface

Figure 2 is an extension of Figure 1. Again, the inner architecture of the CDN is beyond the scope of the IETF CDNI WG charter; Figure 2 provides a high level representation of a possible implementation just in order to ease the understanding of the global picture.

The operations shown on Figure 2 are as follows:

1. A content request from a user agent (and/or from an intermediate local DNS in case it is a DNS request) arrives at the upstream CDN.
2. Within the upstream CDN, the CDN selection Module consults the routing module to decide which CDN will handle this content





request (i.e. whether it will be the upstream CDN or one of its downstream CDNs). The interface between these internal modules is out of standardization scope. Let us consider that the CDN selection module selected the downstream CDN2 for that content request (so as to continue with the illustrating example introduced in [Section 3](#)).

3. Once this CDN selection is achieved, the module in charge of generating the response to the content request ('Content request response generation Module' on Figure 2) is called. The interface between these internal modules is out of standardization scope. In order to generate the response, the Content request response generation module needs to get the identifier of the selected delivery resource (DRI) to where the content request must be redirected.
  4. The Content request response generation module consults the DRI module to get this adequate DRI. The interface between these internal modules is out of standardization scope. The DRI module is in charge of getting and storing the DRI(s) provided by each downstream CDN over their CDNI DRIS interfaces with the upstream CDN.
  5. Once the Content request response generation module has this adequate DRI, it generates the response to the content request so as to the request be redirected towards the selected delivery resource.
- A. The operations achieved over the CDNI Routing interfaces aim at providing all information about the capabilities offered by the downstream CDNs to the upstream CDN in the frame of their respective CDNI agreements contracted with the upstream CDN.
- B. The operations achieved over the CDNI DRIS Interface with the downstream CDN2 aim at providing the upstream CDN with the DRI, i.e. the identifier of the selected delivery resource.

The operations referenced with numeric indexes on Figure 2 ("1", "2", "3", "4", "5") show a strict time dependency. In particular, it is to be highlighted that the CDN selection process of the upstream CDN does not take the DRI information into account. This identifier is used by the content request response generation module only after the CDN selection process is achieved.

As explained in [Section 3](#), the CDNI routing interfaces are referenced with an alphabetic index ("A") to indicate that the CDNI routing information are exchanged asynchronously and continuously, with keep alive and update messages.



The CDNI DRIS interfaces are also referenced with an alphabetic index ("B") to indicate there is not always a systematic time dependency between the content requests received by the upstream CDN and the operations occurring over the CDNI DRIS interfaces. This depends, among others, on the CDNI request redirection strategy enforced between the CDNs (recursive or iterative). This means that the specification of the CDNI DRIS interface MUST enable synchronous and asynchronous operations, as illustrated in the next [Section 4.2](#).

#### **[4.2](#). Overview of CDNI DRIS operations**

This section gives an overview of operations over the CDNI DRIS interfaces for each CDNI request redirection strategy (iterative, full-recursive and semi-recursive).

All the figures present the same network topology with three cascaded CDNs so as to show very clearly the difference between the full-recursive and semi-recursive modes. The case where only two CDNs are involved can be straightforwardly deduced. In addition, the CDNI request redirection strategy applied between the first CDN and the second CDN (e.g., iterative) could differ from the strategy applied between the second CDN and the third CDN (e.g., semi-recursive). The three figures are for illustration purpose only; they do not aim at reflecting exhaustively the full flexibility that the CDN service providers have when choosing their CDNI request redirection strategies.

The same situation and content request are considered in all the three figures:

- o There is one CDNI agreement and one CDN interconnection between CDN-a and CDN-b for the considered request. CDN-b is a downstream CDN of CDN-a. And there is one CDNI DRIS interface between CDN-a and CDN-b, bootstrapped with configuration information exchanged over the CDNI control interface during the initial CDN interconnection activation process (see [\[I-D.ietf-cdni-framework\]](#)).
- o In the same way there is one CDNI agreement, one CDN interconnection and one CDNI DRIS interface between CDN-b and CDN-c. CDN-c is a downstream CDN of CDN-b for the considered request.
- o CDN-a receives a content request and decides CDN-b will handle it. CDN-b decides the content request will be handled by CDN-c. CDN-c delivers the content to the user agent from one of its delivery nodes (cache hit).



#### 4.2.1. Case of iterative CDNI request redirection

Figure 3 presents the case where the iterative CDNI request redirection mode is applied between CDN-a and CDN-b, and between CDN-b and CDN-c.

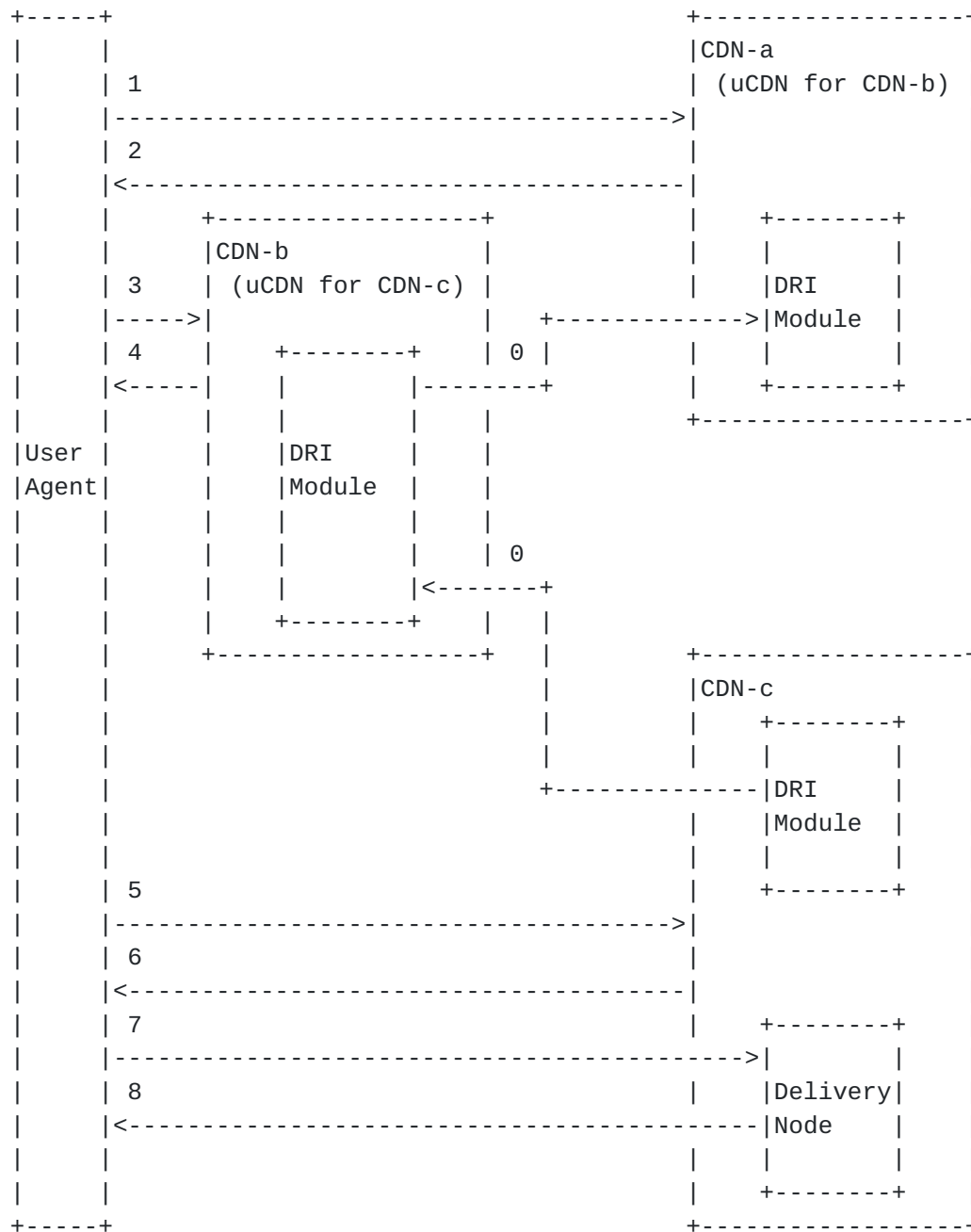


Figure 3: Iterative CDNI request redirection



The operations shown in Figure 3 are as follows:

0. CDN-a gets from CDN-b, over the CDNI DRIS interface between CDN-a and CDN-b, a DRI valid for any content request within their mutual CDNI agreement, and possibly before any user agent content request is received by CDN-a.

In the iterative case, the CDNI DRIS interface may indeed provide the upstream CDN with a unique DRI valid in the frame of their mutual CDNI agreement for any content request received by the upstream CDN.

Basically, it means that the downstream CDN informs the upstream CDN that, when the upstream CDN decides to redirect a content request to this downstream CDN in the frame of their mutual CDNI agreement, the upstream CDN just has to use systematically that DRI to forge the response sent by the upstream CDN to redirect the content request to that downstream CDN.

For example, in case the CDNI request redirection mechanism is based on HTTP 302 redirect messages, this DRI includes a distinguished CDN-domain, which is to be "stacked" in front of the original URL to construct the new URL to redirect the content request to the request routing system of the downstream CDN, as detailed in [\[I-D.ietf-cdni-framework\]](#).

This static and unique DRI for a CDNI agreement set between CDN-a and CDN-b can be exchanged even before the first content request received by CDN-a. This is an example of asynchronous operation over the CDNI DRIS interface. And this is one case where it may be relevant to implement the CDNI DRIS interface "manually"; for example the DRI can be exchanged on the phone or by email simply and only once for the whole duration of the CDNI agreement between CDN-a and CDN-b.

We describe the other operations of Figure 3 below.

0. The same way, CDN-b gets from CDN-c, over the CDNI DRIS interface between CDN-b and CDN-c, a DRI valid for any content request within their mutual CDNI agreement, and possibly before any user agent content request is received by CDN-b.

1. The considered content request, sent by a user agent (and/or by an intermediate local DNS in case it is a DNS request), arrives at CDN-a.

2. CDN-a decides this content request is to be best handled by CDN-b. Therefore, CDN-a sends a response to the content request, forged with the DRI provided by CDN-b.





3. A request is thus sent by the user agent (and/or by an intermediate local DNS in case it is a DNS request) to CDN-b.
4. CDN-b decides this content request is to be best handled by CDN-c. Thus, CDN-b sends a response to the content request forged with the DRI provided by CDN-c.
5. A request is sent by the user agent (and/or by an intermediate local DNS in case it is a DNS request) to CDN-c.
6. CDN-c decides it will handle the request, i.e. it will be the one to deliver the content to the user agent. CDN-c selects one of its delivery nodes to handle that content request. CDN-c generates a response redirecting the content request to this delivery node.
7. The user agent emits a content request to the selected delivery node.
8. The selected delivery node from CDN-c delivers the requested content to the user agent.

#### **4.2.2. Case of recursive CDNI request redirection**

Figure 4 presents the case where the full-recursive CDNI request redirection mode is applied between CDN-a and CDN-b, and between CDN-b and CDN-c.



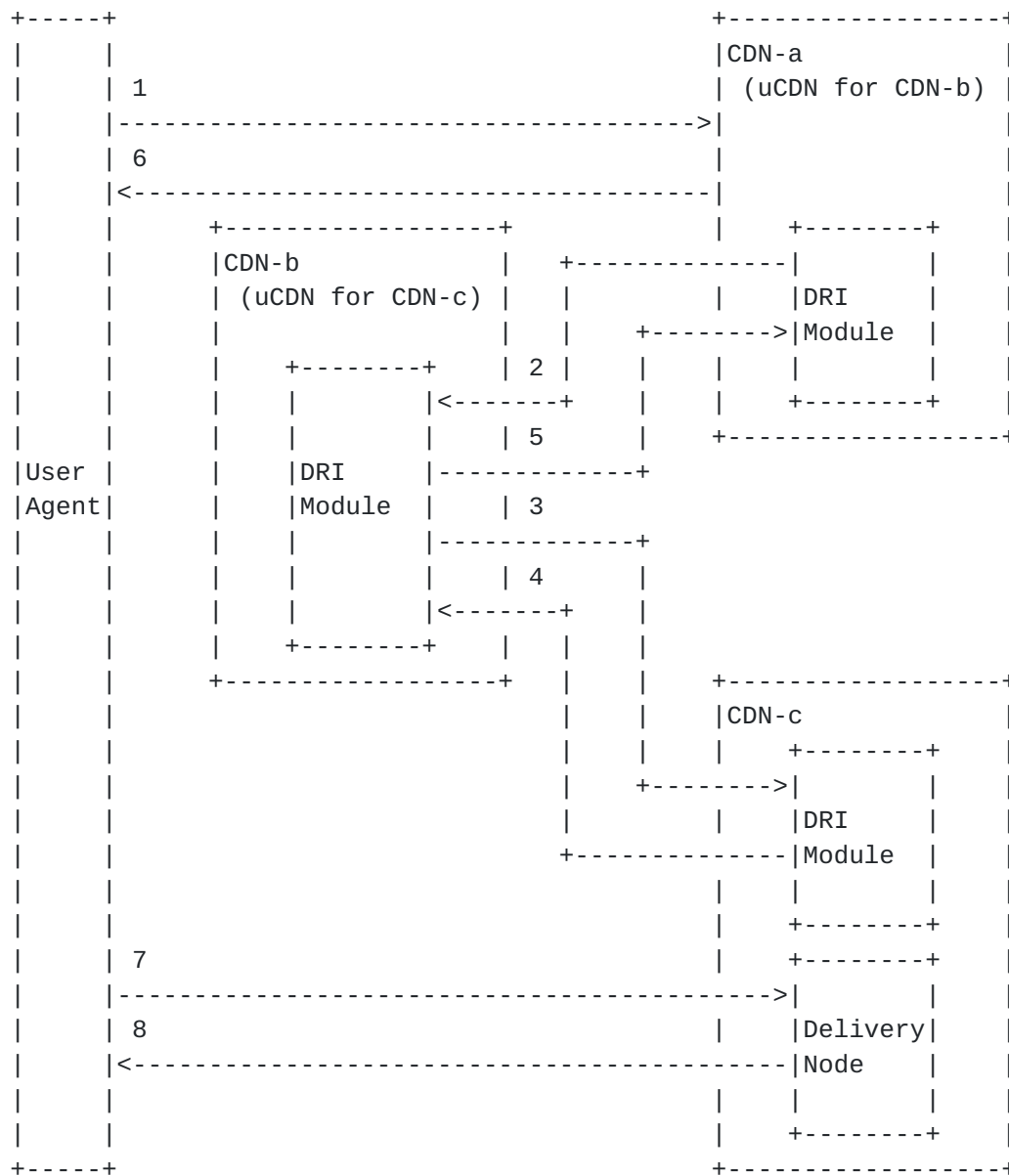


Figure 4: Full-recursive CDNI request redirection

The operations shown in Figure 4 are as follows:

1. The considered content request, sent by a user agent (and/or by an intermediate local DNS in case it is a DNS request), arrives at CDN-a.
2. CDN-a decides this content request is to be best handled by CDN-b. CDN-a sends a request to CDN-b over the CDNI DRIS interface set up between CDN-a and CDN-b. The request includes all information about the content request CDN-b needs in order to select the most



appropriate delivery resource and to response to CDN-a with the corresponding adequate DRI.

3. CDN-b decides this content request is to be best handled by CDN-c. CDN-b sends a request to CDN-c over the CDNI DRIS interface set up between CDN-b and CDN-c. The request includes all information about the content request CDN-c needs in order to select the most appropriate delivery resource and to response to CDN-b with the corresponding adequate DRI.

4. CDN-c decides it will handle the content request, i.e. it will be the one to deliver the content to the user agent. CDN-c selects one of its delivery nodes to handle that content request. CDN-c sends a response to CDN-b, over the CDNI DRIS interface between CDN-b and CDN-c, with a DRI corresponding to that delivery node.

5. CDN-b sends a response to CDN-a, over the CDNI DRIS interface between CDN-a and CDN-b, with a DRI corresponding to the selected delivery node from CDN-c. This DRI is based on the DRI provided by CDN-c. Details about the manipulations achieved by CDN-b over the DRI received from CDN-c to generate the DRI sent to CDN-a are to be provided in the dedicated specification of the CDNI DRIS interface.

6. CDN-a sends a response to the content request, forged with the DRI provided by CDN-b.

7. The user agent emits a content request directly to the selected delivery node from CDN-c.

8. The selected delivery node from CDN-c delivers the requested content to the user agent.

The Figure 5 below presents the case where the semi-recursive CDNI request redirection mode is applied between CDN-a and CDN-b, and between CDN-b and CDN-c.



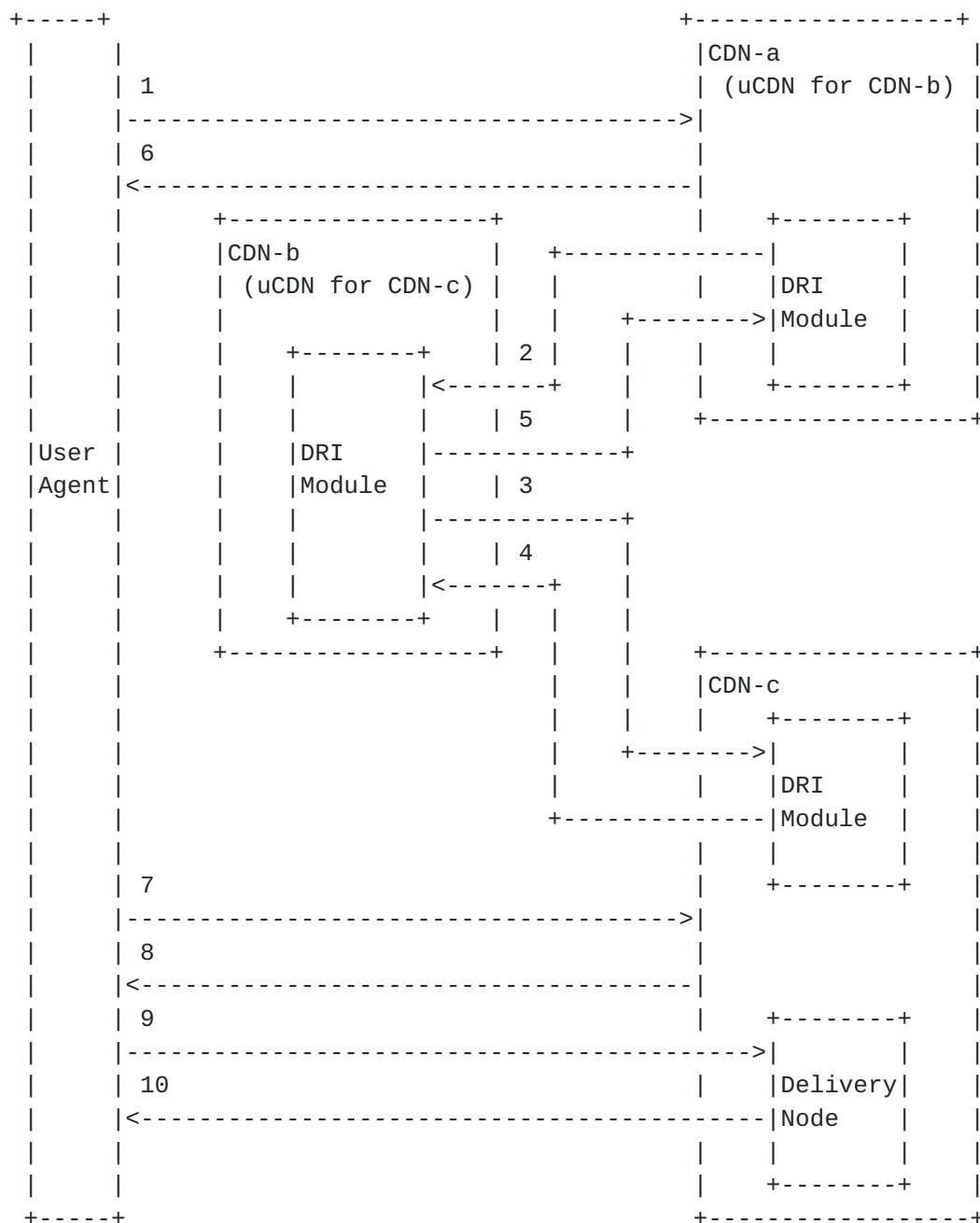


Figure 5: Semi-recursive CDNI request redirection

The operations shown in Figure 5 are as follows:

1. The considered content request, sent by a user agent (and/or by an intermediate local DNS in case it is a DNS request), arrives at CDN-a.
2. CDN-a decides this content request is to be best handled by





CDN-b. CDN-a sends a request to CDN-b over the CDNI DRIS interface set up between CDN-a and CDN-b. The request includes all information about the content request CDN-b needs in order to select the most appropriate delivery resource and to response to CDN-a with the corresponding adequate DRI.

3. CDN-b decides this content request is to be best handled by CDN-c. CDN-b sends a request to CDN-c over the CDNI DRIS interface set up between CDN-b and CDN-c. The request includes all information about the content request CDN-c needs in order to select the most appropriate delivery resource and to response to CDN-b with the corresponding adequate DRI.

4. CDN-c decides it will handle the content request, i.e. it will be the one to deliver the content to the user agent. CDN-c sends a response to CDN-b, over the CDNI DRIS interface between CDN-b and CDN-c, with a DRI corresponding to its request routing system.

5. CDN-b sends a response to CDN-a, over the CDNI DRIS interface between CDN-a and CDN-b, with a DRI corresponding to the selected delivery resource (i.e. to the request routing system of CDN-c). This DRI is based on the DRI provided by CDN-c. Details about the manipulations achieved by CDN-b over the DRI received from CDN-c to generate the DRI sent to CDN-a are to be provided in the dedicated specification of the CDNI DRIS interface.

6. CDN-a sends a response to the content request, forged with the DRI provided by CDN-b.

7. The content request is redirected by the user agent (and/or by an intermediate local DNS in case it is a DNS request) to the selected delivery resource, i.e. to CDN-c.

8. CDN-c decides it will handle the content request, i.e. it will be the one to deliver the content to the user agent. CDN-c selects one of its delivery nodes to handle that content request. CDN-c generates a response redirecting the content request to this delivery node.

9. The user agent emits a content request to the selected delivery node.

10. The selected delivery node from CDN-c delivers the requested content to the user agent.

As shown on Figure 4 and 5, when the recursive mode is applied, the upstream CDN may have to send a request over a CDNI DRIS interface every time it receives a content request. This is an example of



synchronous operations over the CDNI DRIS interface. Having one CDNI DRIS request per content request may lead to scalability issues, even if the CDNI DRIS interface is implemented with a network protocol rather than "manually". Yet these issues can be solved. This is to be documented in the dedicated specification of the CDNI DRIS interface.

#### **[4.3.](#) Key points to note about the CDNI DRIS interface**

To conclude this section, the key points to note about the CDNI DRIS interface are the following:

- o The CDNI DRIS interface **MUST** always exist between two interconnected CDNs. Whatever the CDNI request redirection strategy applied (recursive or iterative), the CDNI DRIS interface exists, even if it is implemented "manually" in some cases, as suggested in the example of Figure 3 above.
- o Moreover the CDNI DRIS interface **MUST** be unique from a functional perspective. Another way to say this is that, from a functional perspective, this is the exact same CDNI DRIS interface that is used, and the exact same type of information that are exchanged over this interface, whatever the CDNI request redirection strategy applied (recursive or iterative).
- o The specification of the CDNI DRIS interface **MUST** enable synchronous and asynchronous CDNI DRIS operations: operations possibly triggered by the CDN selection process for a given content request (as shown on Figure 4 and 5), as well as operations achieved independently of any content request (as shown on Figure 3).
- o The specification of the CDNI DRIS interface **MUST** enable operations initiated by uCDN (as shown on Figure 4 and 5) or by dCDN (as shown on Figure 3).
- o The specification of the CDNI DRIS interface **MUST** be compatible with "automatic" (i.e. "with a specific network protocol") and "manual" implementations, as discussed in [Section 4.2](#). The specification of the CDNI DRIS interface **SHALL** include a description for each of these implementation options.
- o The CDNI routing and CDNI DRIS interfaces **MUST** be independent.



## **5. CDNI request routing is just another routing and signaling problem**

This part of the CDNI interconnection framework the IETF has been referring to so far with the term "CDNI Request Routing" is just another routing, signaling and forwarding problem in a long series of the telecommunication history.

For example one can draw an analogy with the IP/MPLS-TE framework, notably, as shown on Figure 6 and below, between:

- o the CDNI routing interface and any IP routing protocol/interface (such as BGP/IGP IP routing protocols),
- o the CDNI DRIS interface and a signaling protocol such as RSVP-TE.

It is to be noted that such an analogy must be considered with care because the context and objectives of CDN interconnection are different from IP routing, signaling and forwarding. In particular, the type of information exchanged via the CDNI DRIS interface is totally different from the information exchanged by protocols like RSVP-TE in IP/MPLS networks. Anyway this analogy may ease to understand the role of the CDNI DRIS interface in the CDNI framework.

Another key point to note in this analogy is that IP prefix is one of the most important concepts in IP networks. It is used in most IP processes (IP routing, packet filtering, MPLS-TE signaling, etc.). It has been a highly useful and powerful concept to simplify the specification of TCP/IP protocols as well as to ensure performance and scalability of IP networks. For example exchanging IP routing information per IP prefix has been a MUST to ensure IP routing performance and scalability.

The equivalent concept to IP prefix has the same importance in the CDN interconnection framework. The concept is named "contentRequestScope" in Figure 6. A contentRequestScope designates a class of content requests sharing common properties (e.g., "all the HTTP requests", or "all HTTP requests issued by French users", or "all RTSP and HTTP requests with signed URL", etc.).

In the same way as IP prefix is a key concept for specifying TCP/IP protocols, "contentRequestScope" is THE main concept for the CDN interconnection framework. This highly useful and powerful concept SHALL be used to simplify the specification of ALL CDN interconnection interfaces, as well as to ensure performance and scalability in CDN interconnection.



IP/MPLS-TE concepts	CDN Interconnection concepts
IP packet Forwarding	Content request redirection
IP prefix   (correspond to a class of IP   addresses sharing the same   prefix)	ContentRequestScope   (correspond to a class of   content requests sharing   common properties)
Ingress Provider Edge Router   (ILSR)	upstream CDN (uCDN)
Egress Provider Edge Router   (ELSR)	Delivery resource (delivery node   or downstream CDN)
IP routing interfaces (running   IGP/BGP IP routing protocols)	CDNI routing interface
IP routing information   (IP prefix <-> Next Hop)	CDNI routing information   (ContentRequestScope <-> dCDN)
IP FEC table construction   (IP prefix <-> ELSR)	Redirection table construction   (ContentRequestScope <-> delivery   resource)
Signaling information provided   by the RSVP-TE protocol   (MPLS label <-> ELSR)	Signaling information provided   by the CDNI DRIS interface   (DRI <-> delivery resource)
To encapsulate an IP packet in   an MPLS frame (using an MPLS   Label)	To generate a redirected content   request (using a DRI)
To forward a packet out of the   nominal route based on IGP   and BGP routing information,   thanks to MPLS Traffic   Engineering technologies	To redirect a content request   out of the authoritative CDN,   to another CDN, thanks to CDN   interconnection technologies
To forward an IP packet   encapsulated in an MPLS frame   via - or to - the destination   ELSR thanks to the MPLS   header of the MPLS frame	To redirect a content request to   to the selected downstream CDN   - or to the selected delivery   node - thanks to the   Downstream Resource Identifier   (DRI) used to forge the response   to the initial content request





Figure 6: Analogy between IP/MPLS-TE and CDNI concepts

CDNI Routing interfaces exchanges CDNI routing information per contentRequestScope, i.e. per class of content requests sharing common properties.

Analogically: IP routing protocols like IGP/BGP exchange routing information per IP prefix, i.e. per class of IP addresses sharing common properties.

The upstream CDN builds its redirection table with information provided by the CDNI Routing interface and the CDNI DRIS interface.

Analogically: The Ingress Provider Edge Router (ILSR) builds its forwarding table with information provided by the IP routing and MPLS-TE signaling protocols.

When receiving a content request, which has possibly been already redirected by some upstream CDNs, a CDN consults its forwarding table to generate a response using the adequate DRI, provided by the CDNI DRIS interface, which redirects the content request to the selected delivery resource (which is a CDN or a node downstream).

Analogically: When receiving an IP packet, possibly encapsulated in an MPLS frame, an Ingress Provider Edge Router (ILSR) consults its forwarding table to manipulate it adequately. This manipulation may include to encapsulate it in an MPLS frame, based on the signaling information provided by the RSVP-TE protocol, which makes it being then forwarded to the right Egress Provider Edge router (ELSR).

## **6. Conclusion and recommendations**

A first key message of this document is that the term "CDNI request routing" is confusing as it makes a mix-up of clearly different set of processes and interfaces.

A second key message of this document is that this part of the CDN interconnection framework the IETF has been referring to so far with the term "CDNI Request Routing" is just another routing, signaling and forwarding problem in a long series of the telecommunication history. For example, one can draw a direct analogy between the IP/MPLS-TE framework and the CDN interconnection framework.

Thus one can directly be inspired by the best practices and results of the efforts invested over years, even decades, to develop technologies in the past, such as IP/MPLS-TE, to specify adequately CDN interconnection interfaces.



The proposals from the current document can be smoothly integrated in the WG drafts, especially [[I-D.ietf-cdni-framework](#)] and [[I-D.ietf-cdni-requirements](#)], as they essentially propose (useful) clarifications of the existing framework.

We recommend to review [[I-D.ietf-cdni-framework](#)], at least its [section 4.2](#). [Appendix A](#) provides a proposal to replace the current Section 4.2 of [[I-D.ietf-cdni-framework](#)].

We recommend to review [[I-D.ietf-cdni-requirements](#)], to clearly distinguish the requirements specific to the CDNI routing interface from the requirements specific to the CDNI DRIS interface.

We also recommend to review the charter of the CDNI WG, in particular to replace the following objective:

- o "WG Creation + 18 months: Submit specification of the CDNI Request Routing protocol to IESG as Proposed Standard"

by the two following objectives:

- o "WG Creation + 18 months: Submit specification of the CDNI Routing interface to IESG as Proposed Standard"
- o "WG Creation + 18 months: Submit specification of the CDNI Downstream Resource Identifier Signaling (DRIS) Interface to IESG as Proposed Standard"

Last but not least, we recommend that the specification of ALL CDN interconnection interfaces, including the CDNI routing interface and the CDNI DRIS interface, rely on the "contentRequestScope" concept, i.e. the equivalent concept to IP prefix for CDN interconnection. In the same way as IP prefix is a key concept for specifying TCP/IP protocols, "contentRequestScope" is THE main concept for the CDN interconnection framework. This highly useful and powerful concept SHALL be used to simplify the specification of ALL CDN interconnection interfaces, as well as to ensure performance and scalability in CDN interconnection.

## **7. Acknowledgments**

The authors would like to thank Chris Hawinkel, Larry Peterson, Yvan Massot, Ali Gouta, Emile Stephan, and Patrick Fleming for their inputs and comments.

They also thank the contributors of the EU FP7 OCEAN project in the frame of which these proposals have been elaborated.



The work leading to these results has received funding from the European Union's Seventh Framework Programme (FP7/2007-2013) in OCEAN project (FP7-ICT-248775; <http://www.ict-ocean.eu/>).

## **8. IANA Considerations**

This memo includes no request to IANA.

## **9. Security Considerations**

Those are discussed in [[I-D.ietf-cdni-problem-statement](#)].

## **10. Informative References**

[I-D.ietf-cdni-framework]

Peterson, L. and B. Davie, "Framework for CDN Interconnection", [draft-ietf-cdni-framework-00](#) (work in progress), April 2012.

[I-D.ietf-cdni-problem-statement]

Niven-Jenkins, B., Faucheur, F., and N. Bitar, "Content Distribution Network Interconnection (CDNI) Problem Statement", [draft-ietf-cdni-problem-statement-08](#) (work in progress), June 2012.

[I-D.ietf-cdni-requirements]

Leung, K. and Y. Lee, "Content Distribution Network Interconnection (CDNI) Requirements", [draft-ietf-cdni-requirements-03](#) (work in progress), June 2012.

[I-D.ietf-cdni-use-cases]

Bertrand, G., Emile, S., Burbridge, T., Eardley, P., Ma, K., and G. Watson, "Use Cases for Content Delivery Network Interconnection", [draft-ietf-cdni-use-cases-08](#) (work in progress), June 2012.

## **[Appendix A](#). Proposal for [Section 4.2](#) of CDNI framework draft**

### **"4.2. Request Routing Interface**

The request routing interface is not a single interface, it corresponds to two separate interfaces with clear roles:



### 1) The CDNI Routing Interface

The CDNI routing interface is dedicated to the CDNI routing process. The CDNI routing process consists in the advertisement of CDNI routing information from the downstream CDN to the upstream CDN (the upstream CDN never provides the downstream CDN with any CDNI routing information). CDNI routing information details capabilities of the downstream CDN that the upstream CDN must take into account in its dCDN selection process.

### 2) The CDNI Downstream resource Identifier Signaling (DRIS) Interface

AFTER the CDN selection process is achieved by the upstream CDN for a given content request, the upstream CDN MUST generate a response redirecting that request towards the selected delivery resource by inserting in this response an identifier of that selected delivery resource.

This selected delivery resource can be:

1. a delivery node within the upstream CDN,
2. a downstream CDN (i.e. the request routing system of that downstream CDN), or
3. a delivery node within a downstream CDN.

In the cases "2." and "3." , the identifier of that selected delivery resource MUST be provided by the downstream CDN to the upstream CDN. The downstream CDN uses the CDNI DRIS interface to provide the upstream CDN with this identifier called "Downstream resource Identifier" (DRI).

### Authors' Addresses

Yannick Le Louedec  
France Telecom - Orange  
2 avenue Pierre Marzin  
Lannion, 22307  
France

Phone: +33 2 96 05 17 64  
Email: yannick.lelouedec@orange.com





Anne Marrec  
France Telecom - Orange  
2 avenue Pierre Marzin  
Lannion, 22307  
France

Phone: +33 2 96 05 18 71  
Email: [anne.marrec@orange.com](mailto:anne.marrec@orange.com)

Gilles Bertrand  
France Telecom - Orange  
38-40 rue du General Leclerc  
Issy les Moulineaux, 92130  
France

Phone: +33 1 45 29 89 46  
Email: [gilles.bertrand@orange.com](mailto:gilles.bertrand@orange.com)

Marcin Pilarski  
Orange Polska / WUT  
ul. Obrzezna 7 / ul. Koszykowa 75  
Warsaw, Mazowieckie 02-691 / 00-662  
Poland

Email: [marcin.pilarski@orange.com](mailto:marcin.pilarski@orange.com) / [marcin.pilarski@mini.pw.edu.pl](mailto:marcin.pilarski@mini.pw.edu.pl)

