

Network Working Group  
Internet-Draft  
Intended status: Informational  
Expires: 17 February 2022

E. Omara  
Apple  
J. Uberti  
Google  
A. GOUAILLARD  
S. Murillo  
CoSMo Software  
16 August 2021

Secure Frame (SFrame)  
draft-omara-sframe-03

## Abstract

This document describes the Secure Frame (SFrame) end-to-end encryption and authentication mechanism for media frames in a multiparty conference call, in which central media servers (SFUs) can access the media metadata needed to make forwarding decisions without having access to the actual media. The proposed mechanism differs from other approaches through its use of media frames as the encryptable unit, instead of individual RTP packets, which makes it more bandwidth efficient and also allows use with non-RTP transports.

## Status of This Memo

This Internet-Draft is submitted in full conformance with the provisions of [BCP 78](#) and [BCP 79](#).

Internet-Drafts are working documents of the Internet Engineering Task Force (IETF). Note that other groups may also distribute working documents as Internet-Drafts. The list of current Internet-Drafts is at <https://datatracker.ietf.org/drafts/current/>.

Internet-Drafts are draft documents valid for a maximum of six months and may be updated, replaced, or obsoleted by other documents at any time. It is inappropriate to use Internet-Drafts as reference material or to cite them other than as "work in progress."

This Internet-Draft will expire on 17 February 2022.

## Copyright Notice

Copyright (c) 2021 IETF Trust and the persons identified as the document authors. All rights reserved.

Internet-Draft

SFrame

August 2021

This document is subject to [BCP 78](#) and the IETF Trust's Legal Provisions Relating to IETF Documents (<https://trustee.ietf.org/license-info>) in effect on the date of publication of this document. Please review these documents carefully, as they describe your rights and restrictions with respect to this document. Code Components extracted from this document must include Simplified BSD License text as described in Section 4.e of the [Trust Legal Provisions](#) and are provided without warranty as described in the Simplified BSD License.

## Table of Contents

<a href="#">1.</a>	<a href="#">Introduction</a>	<a href="#">3</a>
<a href="#">2.</a>	<a href="#">Terminology</a>	<a href="#">4</a>
<a href="#">3.</a>	<a href="#">Goals</a>	<a href="#">4</a>
<a href="#">4.</a>	<a href="#">SFrame</a>	<a href="#">5</a>
<a href="#">4.1.</a>	<a href="#">SFrame Format</a>	<a href="#">7</a>
<a href="#">4.2.</a>	<a href="#">SFrame Header</a>	<a href="#">7</a>
<a href="#">4.3.</a>	<a href="#">Encryption Schema</a>	<a href="#">8</a>
<a href="#">4.3.1.</a>	<a href="#">Key Selection</a>	<a href="#">9</a>
<a href="#">4.3.2.</a>	<a href="#">Key Derivation</a>	<a href="#">9</a>
<a href="#">4.3.3.</a>	<a href="#">Encryption</a>	<a href="#">10</a>
<a href="#">4.3.4.</a>	<a href="#">Decryption</a>	<a href="#">12</a>
<a href="#">4.3.5.</a>	<a href="#">Duplicate Frames</a>	<a href="#">12</a>
<a href="#">4.4.</a>	<a href="#">Ciphersuites</a>	<a href="#">12</a>
<a href="#">4.4.1.</a>	<a href="#">AES-CM with SHA2</a>	<a href="#">13</a>
<a href="#">5.</a>	<a href="#">Key Management</a>	<a href="#">14</a>
<a href="#">5.1.</a>	<a href="#">Sender Keys</a>	<a href="#">15</a>
<a href="#">5.2.</a>	<a href="#">MLS</a>	<a href="#">15</a>
<a href="#">6.</a>	<a href="#">Media Considerations</a>	<a href="#">17</a>
<a href="#">6.1.</a>	<a href="#">SFU</a>	<a href="#">17</a>
<a href="#">6.1.1.</a>	<a href="#">LastN and RTP stream reuse</a>	<a href="#">17</a>
<a href="#">6.1.2.</a>	<a href="#">Simulcast</a>	<a href="#">17</a>
<a href="#">6.1.3.</a>	<a href="#">SVC</a>	<a href="#">18</a>
<a href="#">6.2.</a>	<a href="#">Video Key Frames</a>	<a href="#">18</a>
<a href="#">6.3.</a>	<a href="#">Partial Decoding</a>	<a href="#">18</a>
<a href="#">7.</a>	<a href="#">Overhead</a>	<a href="#">18</a>
<a href="#">7.1.</a>	<a href="#">Audio</a>	<a href="#">19</a>
<a href="#">7.2.</a>	<a href="#">Video</a>	<a href="#">19</a>
<a href="#">7.3.</a>	<a href="#">SFrame vs PERC-lite</a>	<a href="#">20</a>
<a href="#">7.3.1.</a>	<a href="#">Audio</a>	<a href="#">20</a>
<a href="#">7.3.2.</a>	<a href="#">Video</a>	<a href="#">20</a>
<a href="#">8.</a>	<a href="#">Security Considerations</a>	<a href="#">21</a>
<a href="#">8.1.</a>	<a href="#">No Per-Sender Authentication</a>	<a href="#">21</a>

<a href="#">8.2.</a>	Key Management . . . . .	<a href="#">21</a>
<a href="#">8.3.</a>	Authentication tag length . . . . .	<a href="#">21</a>
<a href="#">9.</a>	IANA Considerations . . . . .	<a href="#">21</a>
<a href="#">10.</a>	Test Vectors . . . . .	<a href="#">21</a>
<a href="#">10.1.</a>	AES_CM_128_HMAC_SHA256_4 . . . . .	<a href="#">22</a>

<a href="#">10.2.</a>	AES_CM_128_HMAC_SHA256_8 . . . . .	<a href="#">23</a>
<a href="#">10.3.</a>	AES_GCM_128_SHA256 . . . . .	<a href="#">25</a>
<a href="#">10.4.</a>	AES_GCM_256_SHA512 . . . . .	<a href="#">27</a>
<a href="#">11.</a>	References . . . . .	<a href="#">29</a>
<a href="#">11.1.</a>	Normative References . . . . .	<a href="#">29</a>
<a href="#">11.2.</a>	Informative References . . . . .	<a href="#">29</a>
	Authors' Addresses . . . . .	<a href="#">30</a>

## [1.](#) Introduction

Modern multi-party video call systems use Selective Forwarding Unit (SFU) servers to efficiently route RTP streams to call endpoints based on factors such as available bandwidth, desired video size, codec support, and other factors. In order for the SFU to work properly though, it needs to be able to access RTP metadata and RTCP feedback messages, which is not possible if all RTP/RTCP traffic is end-to-end encrypted.

As such, two layers of encryptions and authentication are required:

1. Hop-by-hop (HBH) encryption of media, metadata, and feedback messages between the the endpoints and SFU
2. End-to-end (E2E) encryption of media between the endpoints

While DTLS-SRTP can be used as an efficient HBH mechanism, it is inherently point-to-point and therefore not suitable for a SFU context. In addition, given the various scenarios in which video calling occurs, minimizing the bandwidth overhead of end-to-end encryption is also an important goal.

This document proposes a new end-to-end encryption mechanism known as SFrame, specifically designed to work in group conference calls with SFUs.

Internet-Draft

SFrame

August 2021

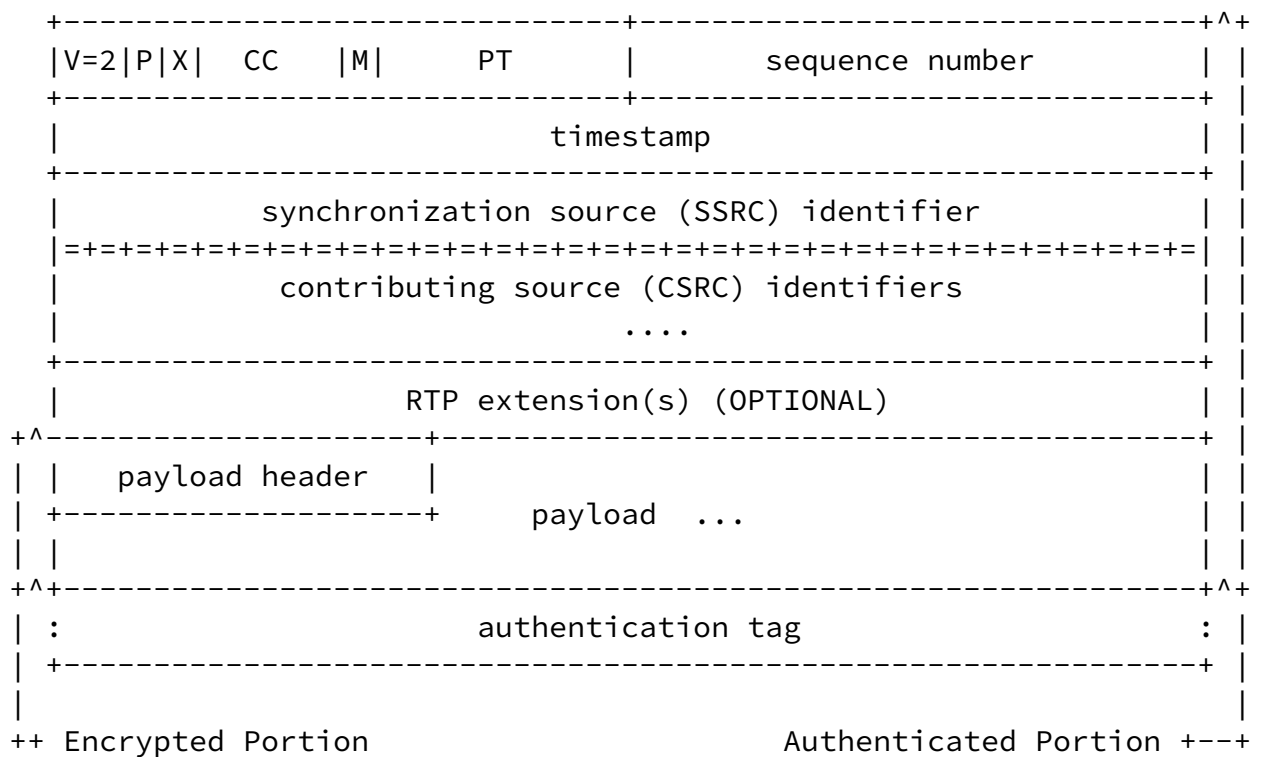


Figure 1: SRTP packet format

## 2. Terminology

The key words "MUST", "MUST NOT", "REQUIRED", "SHALL", "SHALL NOT", "SHOULD", "SHOULD NOT", "RECOMMENDED", "NOT RECOMMENDED", "MAY", and "OPTIONAL" in this document are to be interpreted as described in [BCP 14](#) [[RFC2119](#)] [[RFC8174](#)] when, and only when, they appear in all

capitals, as shown here.

SFU: Selective Forwarding Unit (AKA RTP Switch)

IV: Initialization Vector

MAC: Message Authentication Code

E2EE: End to End Encryption

HBH: Hop By Hop

KMS: Key Management System

### [3.](#) Goals

SFrame is designed to be a suitable E2EE protection scheme for conference call media in a broad range of scenarios, as outlined by the following goals:

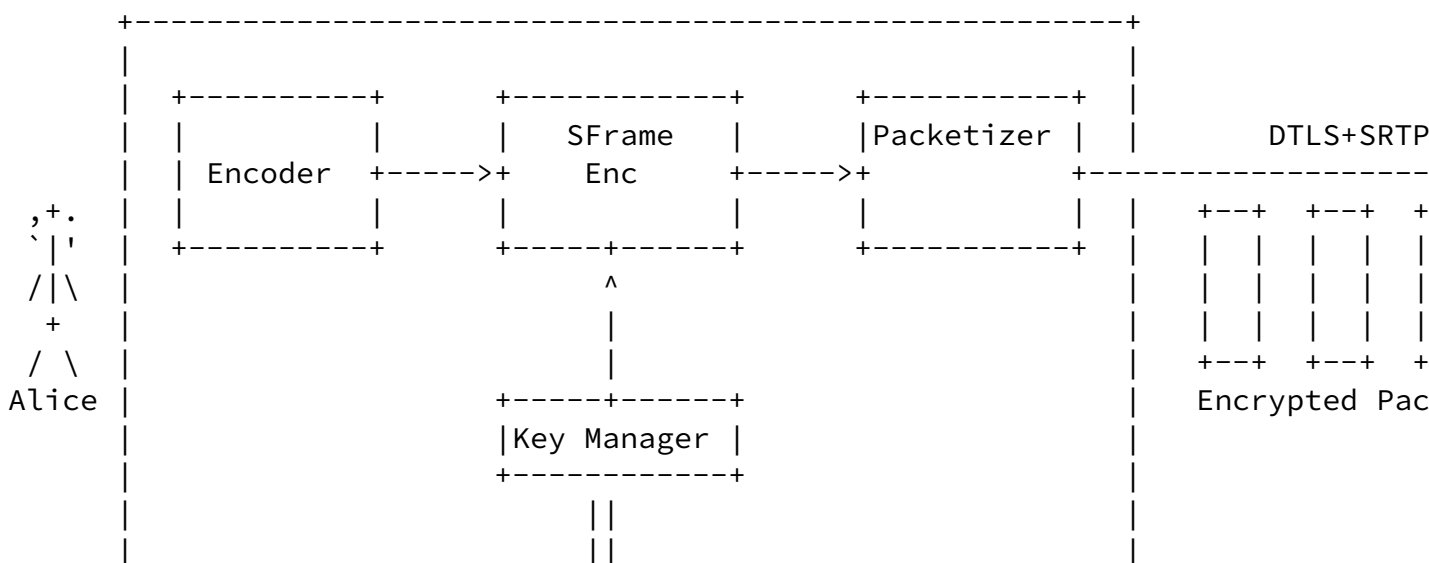
1. Provide an secure E2EE mechanism for audio and video in conference calls that can be used with arbitrary SFU servers.
2. Decouple media encryption from key management to allow SFrame to be used with an arbitrary KMS.
3. Minimize packet expansion to allow successful conferencing in as many network conditions as possible.
4. Independence from the underlying transport, including use in non-RTP transports, e.g., WebTransport.
5. When used with RTP and its associated error resilience mechanisms, i.e., RTX and FEC, require no special handling for RTX and FEC packets.
6. Minimize the changes needed in SFU servers.
7. Minimize the changes needed in endpoints.
8. Work with the most popular audio and video codecs used in conferencing scenarios.

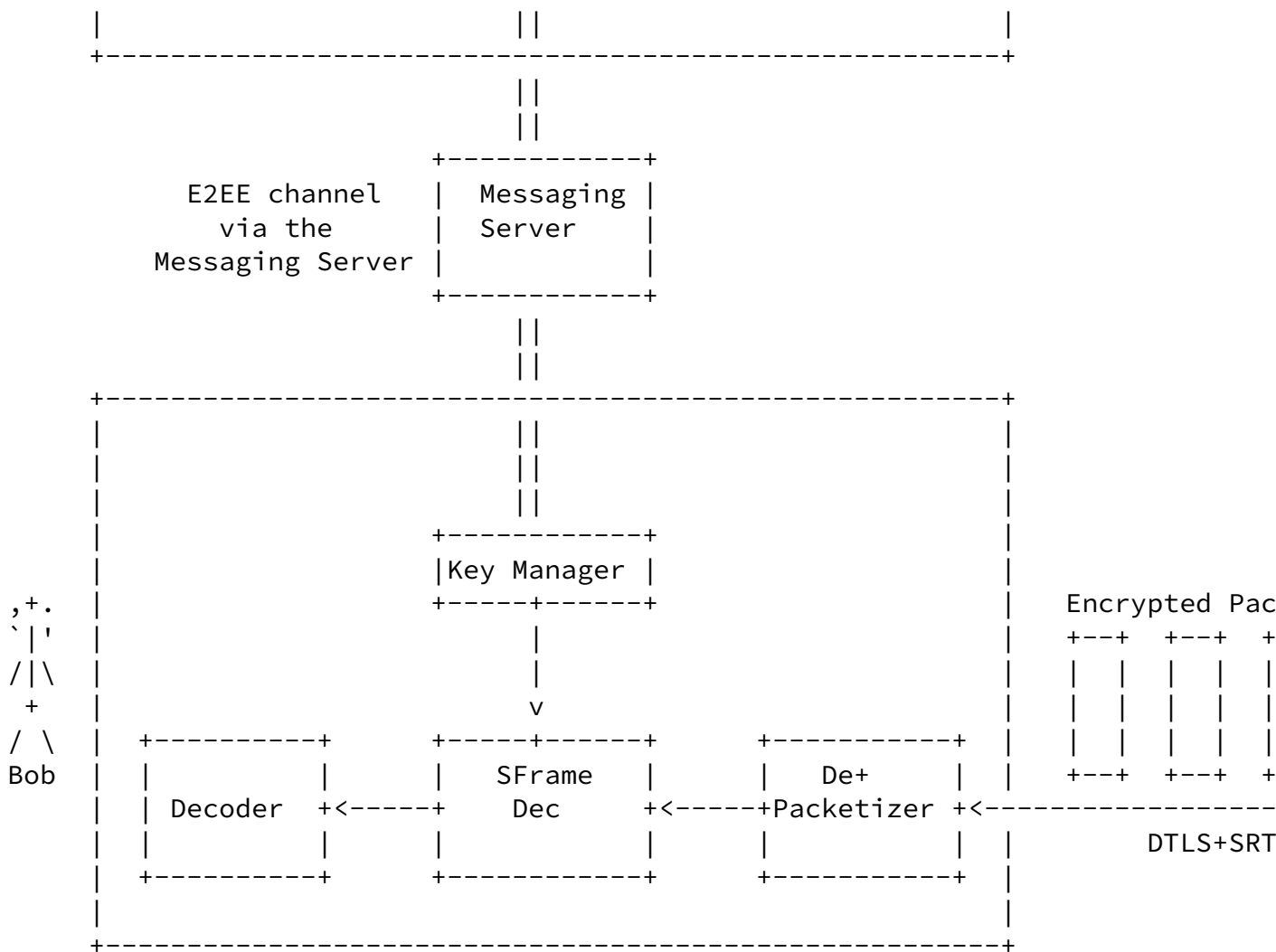
#### 4. SFrame

We propose a frame level encryption mechanism that provides effective end-to-end encryption, is simple to implement, has no dependencies on RTP, and minimizes encryption bandwidth overhead. Because SFrame encrypts the full frame, rather than individual packets, bandwidth overhead is reduced by having a single IV and authentication tag for each media frame.

Also, because media is encrypted prior to packetization, the encrypted frame is packetized using a generic RTP packetizer instead of codec-dependent packetization mechanisms. With this move to a generic packetizer, media metadata is moved from codec-specific mechanisms to a generic frame RTP header extension which, while visible to the SFU, is authenticated end-to-end. This extension includes metadata needed for SFU routing such as resolution, frame beginning and end markers, etc.

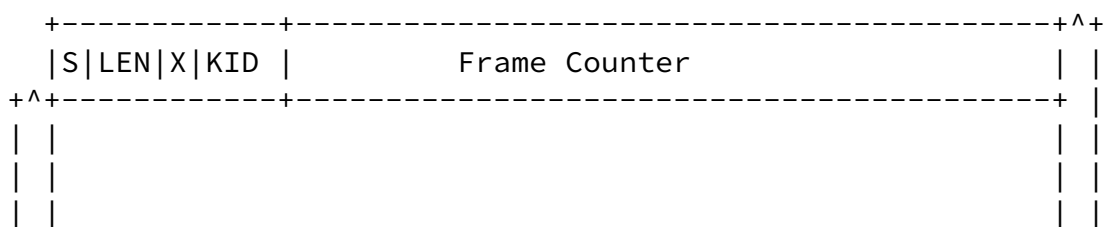
The generic packetizer splits the E2E encrypted media frame into one or more RTP packets and adds the SFrame header to the beginning of the first packet and an auth tag to the end of the last packet.

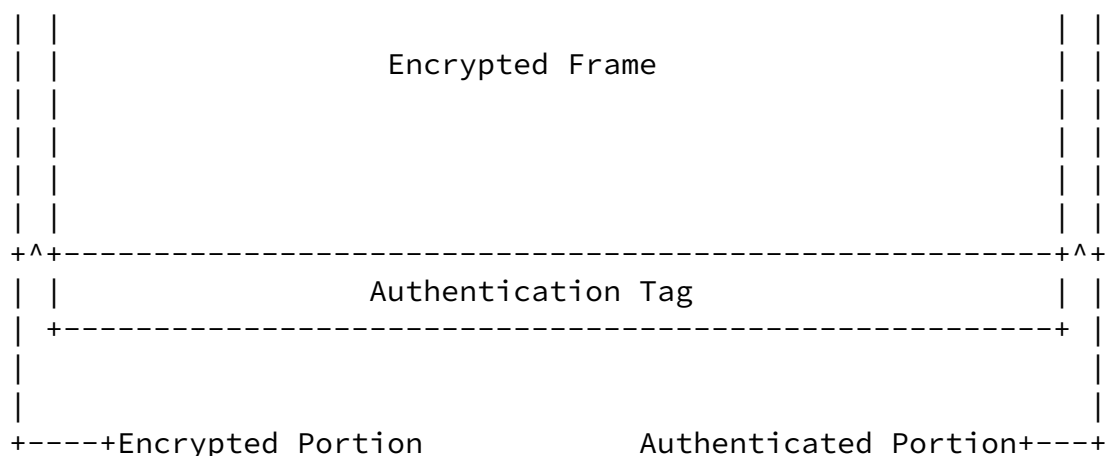




The E2EE keys used to encrypt the frame are exchanged out of band using a secure E2EE channel.

#### [4.1.](#) SFrame Format





#### 4.2. SFrame Header

Since each endpoint can send multiple media layers, each frame will have a unique frame counter that will be used to derive the encryption IV. The frame counter must be unique and monotonically increasing to avoid IV reuse.

As each sender will use their own key for encryption, so the SFrame header will include the key id to allow the receiver to identify the key that needs to be used for decrypting.

Both the frame counter and the key id are encoded in a variable length format to decrease the overhead. The length is up to 8 bytes and is represented in 3 bits in the SFrame header: 000 represents a length of 1, 001 a length of 2... The first byte in the SFrame header is fixed and contains the header metadata with the following format:

```

 0 1 2 3 4 5 6 7
+---+---+---+---+
|R|LEN |X| K  |
+---+---+---+---+
SFrame header metadata

```

Reserved (R): 1 bit This field MUST be set to zero on sending, and MUST be ignored by receivers. Counter Length (LEN): 3 bits This field indicates the length of the CTR fields in bytes (1-8). Extended Key Id Flag (X): 1 bit Indicates if the key field contains

the key id or the key length. Key or Key Length: 3 bits This field



contains the key id (KID) if the X flag is set to 0, or the key length (KLEN) if set to 1.

If X flag is 0 then the KID is in the range of 0-7 and the frame counter (CTR) is found in the next LEN bytes:

```

 0 1 2 3 4 5 6 7
+---+---+---+---+---+---+---+
|R|LEN |0| KID |   CTR... (length=LEN)   |
+---+---+---+---+---+---+---+
```

Frame counter byte length (LEN): 3bits The frame counter length in bytes (1-8). Key id (KID): 3 bits The key id (0-7). Frame counter (CTR): (Variable length) Frame counter value up to 8 bytes long.

if X flag is 1 then KLEN is the length of the key (KID), that is found after the SFrame header metadata byte. After the key id (KID), the frame counter (CTR) will be found in the next LEN bytes:

```

 0 1 2 3 4 5 6 7
+---+---+---+---+---+---+---+
|R|LEN |1|KLEN |   KID... (length=KLEN)   |   CTR... (length=LEN)   |
+---+---+---+---+---+---+---+
```

Frame counter byte length (LEN): 3bits The frame counter length in bytes (1-8). Key length (KLEN): 3 bits The key length in bytes (1-8). Key id (KID): (Variable length) The key id value up to 8 bytes long. Frame counter (CTR): (Variable length) Frame counter value up to 8 bytes long.

#### 4.3. Encryption Schema

SFrame encryption uses an AEAD encryption algorithm and hash function defined by the ciphersuite in use (see [Section 4.4](#)). We will refer to the following aspects of the AEAD algorithm below:

- \* "AEAD.Encrypt" and "AEAD.Decrypt" - The encryption and decryption functions for the AEAD. We follow the convention of [RFC 5116](#) [[RFC5116](#)] and consider the authentication tag part of the ciphertext produced by "AEAD.Encrypt" (as opposed to a separate field as in SRTP [[RFC3711](#)]).
- \* "AEAD.Nk" - The size of a key for the encryption algorithm, in bytes
- \* "AEAD.Nn" - The size of a nonce for the encryption algorithm, in bytes

#### [4.3.1.](#) Key Selection

Each SFrame encryption or decryption operation is premised on a single secret "base\\_key", which is labeled with an integer KID value signaled in the SFrame header.

The sender and receivers need to agree on which key should be used for a given KID. The process for provisioning keys and their KID values is beyond the scope of this specification, but its security properties will bound the assurances that SFrame provides. For example, if SFrame is used to provide E2E security against intermediary media nodes, then SFrame keys **MUST** be negotiated in a way that does not make them accessible to these intermediaries.

For each known KID value, the client stores the corresponding symmetric key "base\\_key". For keys that can be used for encryption, the client also stores the next counter value CTR to be used when encrypting (initially 0).

When encrypting a frame, the application specifies which KID is to be used, and the counter is incremented after successful encryption. When decrypting, the "base\\_key" for decryption is selected from the available keys using the KID value in the SFrame Header.

A given key **MUST NOT** be used for encryption by multiple senders. Such reuse would result in multiple encrypted frames being generated with the same (key, nonce) pair, which harms the protections provided by many AEAD algorithms. Implementations **SHOULD** mark each key as usable for encryption or decryption, never both.

Note that the set of available keys might change over the lifetime of a real-time session. In such cases, the client will need to manage key usage to avoid media loss due to a key being used to encrypt before all receivers are able to use it to decrypt. For example, an application may make decryption-only keys available immediately, but delay the use of encryption-only keys until (a) all receivers have acknowledged receipt of the new key or (b) a timeout expires.

#### [4.3.2.](#) Key Derivation

SFrame encryption and decryption use a key and salt derived from the "base\\_key" associated to a KID. Given a "base\\_key" value, the key and salt are derived using HKDF [[RFC5869](#)] as follows:

```
sframe_secret = HKDF-Extract(K, 'SFrame10')
sframe_key = HKDF-Expand(sframe_secret, 'key', AEAD.Nk)
```

```
sframe_salt = HKDF-Expand(sframe_secret, 'salt', AEAD.Nn)
```

The hash function used for HKDF is determined by the ciphersuite in use.

#### [4.3.3](#). Encryption

After encoding the frame and before packetizing it, the necessary media metadata will be moved out of the encoded frame buffer, to be used later in the RTP generic frame header extension. The encoded frame, the metadata buffer and the frame counter are passed to SFrame encryptor.

SFrame encryption uses the AEAD encryption algorithm for the ciphersuite in use. The key for the encryption is the "sframe\\_key" and the nonce is formed by XORing the "sframe\\_salt" with the current counter, encoded as a big-endian integer of length "AEAD.Nn".

The encryptor forms an SFrame header using the S, CTR, and KID values provided. The encoded header is provided as AAD to the AEAD encryption operation, with any frame metadata appended.

```
def encrypt(S, CTR, KID, frame_metadata, frame):
    sframe_key, sframe_salt = key_store[KID]

    frame_ctr = encode_big_endian(CTR, AEAD.Nn)
    frame_nonce = xor(sframe_salt, frame_ctr)

    header = encode_sframe_header(S, CTR, KID)
    frame_aad = header + frame_metadata

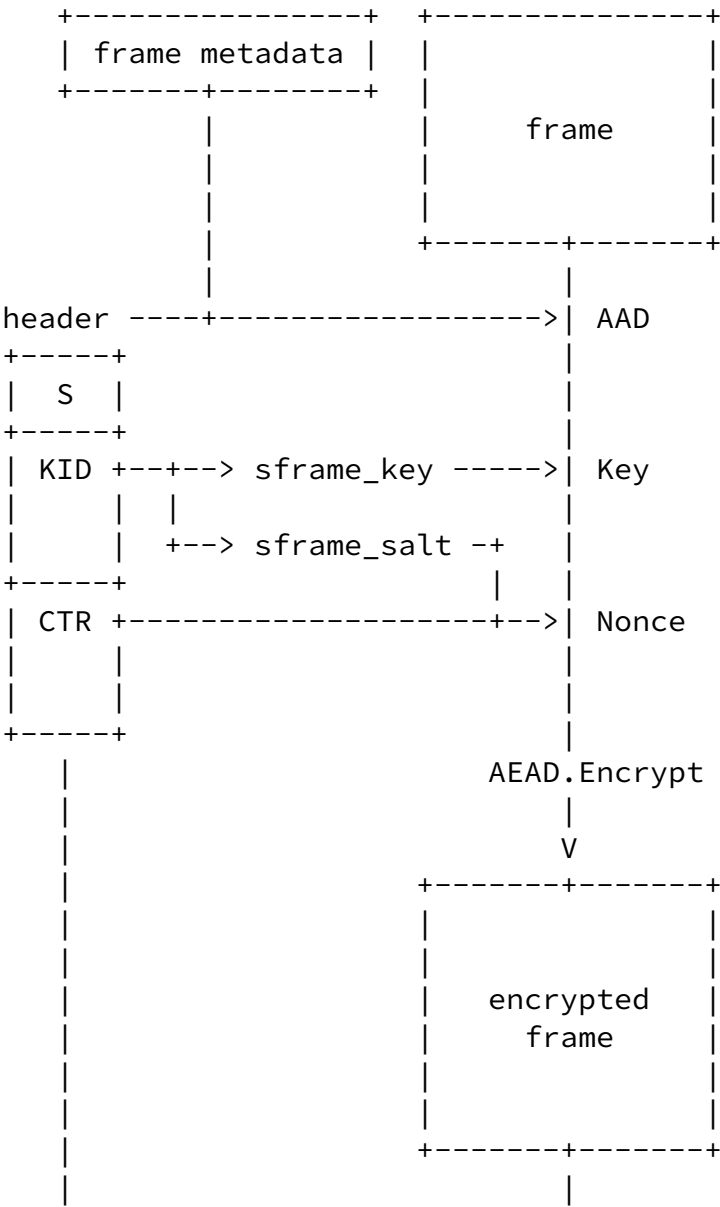
    encrypted_frame = AEAD.Encrypt(sframe_key, frame_nonce, frame_aad, frame)
    return header + encrypted_frame
```

The encrypted payload is then passed to a generic RTP packetized to construct the RTP packets and encrypt it using SRTP keys for the HBH encryption to the media server.

Internet-Draft

SFrame

August 2021



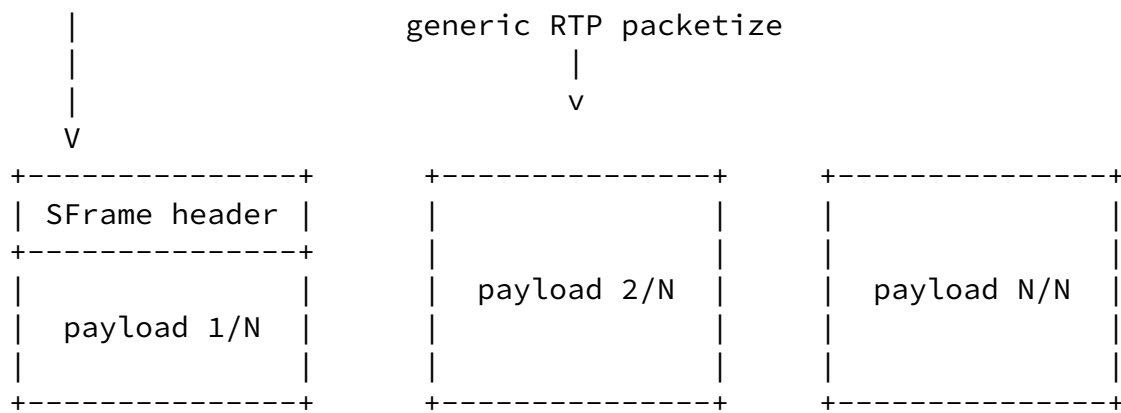


Figure 2: Encryption flow

#### [4.3.4.](#) Decryption

The receiving clients buffer all packets that belongs to the same frame using the frame beginning and ending marks in the generic RTP frame header extension, and once all packets are available, it passes it to SFrame for decryption. The KID field in the SFrame header is used to find the right key for the encrypted frame.

```

def decrypt(frame_metadata, sframe):
    header, encrypted_frame = split_header(sframe)
    S, CTR, KID = parse_header(header)

    sframe_key, sframe_salt = key_store[KID]

    frame_ctr = encode_big_endian(CTR, AEAD.Nn)
    frame_nonce = xor(sframe_salt, frame_ctr)
    frame_aad = header + frame_metadata

    return AEAD.Decrypt(sframe_key, frame_nonce, frame_aad, encrypted_frame)
  
```

For frames that are failed to decrypt because there is key available for the KID in the SFrame header, the client MAY buffer the frame and retry decryption once a key with that KID is received.

#### [4.3.5.](#) Duplicate Frames

Unlike messaging application, in video calls, receiving a duplicate frame doesn't necessary mean the client is under a replay attack, there are other reasons that might cause this, for example the sender might just be sending them in case of packet loss. SFrame decryptors use the highest received frame counter to protect against this. It allows only older frame pithing a short interval to support out of order delivery.

#### 4.4. Ciphersuites

Each SFrame session uses a single ciphersuite that specifies the following primitives:

- o A hash function used for key derivation and hashing signature inputs
- o An AEAD encryption algorithm [[RFC5116](#)] used for frame encryption, optionally with a truncated authentication tag
- o [Optional] A signature algorithm

This document defines the following ciphersuites:

Value	Name	Nh	Nk	Nn	Reference
0x0001	AES_CM_128_HMAC_SHA256_8	32	16	12	RFC XXXX
0x0002	AES_CM_128_HMAC_SHA256_4	32	16	12	RFC XXXX
0x0003	AES_GCM_128_SHA256	32	16	12	RFC XXXX
0x0004	AES_GCM_256_SHA512	64	32	12	RFC XXXX

Table 1

In the "AES\_CM" suites, the length of the authentication tag is indicated by the last value: "\_8" indicates an eight-byte tag and "\_4" indicates a four-byte tag.

In a session that uses multiple media streams, different ciphersuites might be configured for different media streams. For example, in order to conserve bandwidth, a session might use a ciphersuite with 80-bit tags for video frames and another ciphersuite with 32-bit tags for audio frames.

#### [4.4.1.](#) AES-CM with SHA2

In order to allow very short tag sizes, we define a synthetic AEAD function using the authenticated counter mode of AES together with HMAC for authentication. We use an encrypt-then-MAC approach as in SRTP [[RFC3711](#)].

Before encryption or decryption, encryption and authentication subkeys are derived from the single AEAD key using HKDF. The subkeys are derived as follows, where "Nk" represents the key size for the AES block cipher in use and "Nh" represents the output size of the hash function:

```
def derive_subkeys(sframe_key):
    aead_secret = HKDF-Extract(sframe_key, 'SFrame10 AES CM AEAD')
    enc_key = HKDF-Expand(aead_secret, 'enc', Nk)
    auth_key = HKDF-Expand(aead_secret, 'auth', Nh)
    return enc_key, auth_key
```

The AEAD encryption and decryption functions are then composed of individual calls to the CM encrypt function and HMAC. The resulting MAC value is truncated to a number of bytes "tag\_len" fixed by the ciphersuite.

```
def compute_tag(auth_key, nonce, aad, ct):
    aad_len = encode_big_endian(len(aad), 8)
    ct_len = encode_big_endian(len(ct), 8)
    auth_data = aad_len + ct_len + nonce + aad + ct
    tag = HMAC(auth_key, auth_data)
    return truncate(tag, tag_len)

def AEAD.Encrypt(key, nonce, aad, pt):
    enc_key, auth_key = derive_subkeys(key)
    ct = AES-CM.Encrypt(enc_key, nonce, pt)
    tag = compute_tag(auth_key, nonce, aad, ct)
```

```

    return ct + tag

def AEAD.Decrypt(key, nonce, aad, ct):
    inner_ct, tag = split_ct(ct, tag_len)

    enc_key, auth_key = derive_subkeys(key)
    candidate_tag = compute_tag(auth_key, nonce, aad, inner_ct)
    if !constant_time_equal(tag, candidate_tag):
        raise Exception("Authentication Failure")

    return AES-CM.Decrypt(enc_key, nonce, inner_ct)

```

## 5. Key Management

SFrame must be integrated with an E2E key management framework to exchange and rotate the keys used for SFrame encryption and/or signing. The key management framework provides the following functions:

- \* Provisioning KID/"base\\_key" mappings to participating clients
- \* (optional) Provisioning clients with a list of trusted signing keys
- \* Updating the above data as clients join or leave

It is up to the application to define a rotation schedule for keys. For example, one application might have an ephemeral group for every call and keep rotating key when end points joins or leave the call, while another application could have a persistent group that can be used for multiple calls and simply derives ephemeral symmetric keys for a specific call.

### 5.1. Sender Keys

If the participants in a call have a pre-existing E2E-secure channel, they can use it to distribute SFrame keys. Each client participating



in a call generates a fresh encryption key and optionally a signing key pair. The client then uses the E2E-secure channel to send their encryption key and signing public key to the other participants.

In this scheme, it is assumed that receivers have a signal outside of SFrame for which client has sent a given frame, for example the RTP SSRC. SFrame KID values are then used to distinguish generations of the sender's key. At the beginning of a call, each sender encrypts with KID=0. Thereafter, the sender can ratchet their key forward for forward secrecy:

```
sender_key[i+1] = HKDF-Expand(  
    HKDF-Extract(sender_key[i], 'SFrame10 ratchet'),  
    '', AEAD.Nk)
```

The sender signals such an update by incrementing their KID value. A receiver who receives from a sender with a new KID computes the new key as above. The old key may be kept for some time to allow for out-of-order delivery, but should be deleted promptly.

If a new participant joins mid-call, they will need to receive from each sender (a) the current sender key for that sender, (b) the signing key for the sender, if used, and (c) the current KID value for the sender. Evicting a participant requires each sender to send a fresh sender key to all receivers.

## [5.2.](#) MLS

The Messaging Layer Security (MLS) protocol provides group authenticated key exchange [[I-D.ietf-mls-architecture](#)] [[I-D.ietf-mls-protocol](#)]. In principle, it could be used to instantiate the sender key scheme above, but it can also be used more efficiently directly.

MLS creates a linear sequence of keys, each of which is shared among the members of a group at a given point in time. When a member joins or leaves the group, a new key is produced that is known only to the augmented or reduced group. Each step in the lifetime of the group is known as an "epoch", and each member of the group is assigned an "index" that is constant for the time they are in the group.

In SFrame, we derive per-sender "base\\_key" values from the group secret for an epoch, and use the KID field to signal the epoch and sender index. First, we use the MLS exporter to compute a shared SFrame secret for the epoch.

```
sframe_epoch_secret = MLS-Exporter("SFrame 10 MLS", "", AEAD.Nk)
```

```
sender_base_key[index] = HKDF-Expand(sframe_epoch_secret,
                                     encode_big_endian(index, 4), AEAD.Nk)
```

For compactness, do not send the whole epoch number. Instead, we send only its low-order E bits. Note that E effectively defines a re-ordering window, since no more than  $2^E$  epoch can be active at a given time. Receivers MUST be prepared for the epoch counter to roll over, removing an old epoch when a new epoch with the same E lower bits is introduced. (Sender indices cannot be similarly compressed.)

$$\text{KID} = (\text{sender\_index} \ll E) + (\text{epoch} \% (1 \ll E))$$

Once an SFrame stack has been provisioned with the "sframe\_epoch\_secret" for an epoch, it can compute the required KIDs and "sender\_base\_key" values on demand, as it needs to encrypt/decrypt for a given member.

```

...
|
Epoch 17 +--+--+ index=33 -> KID = 0x211
|         |
|         +--+ index=51 -> KID = 0x331
|
Epoch 16 +--+--+ index=2  --> KID = 0x20
|
Epoch 15 +--+--+ index=3  --> KID = 0x3f
|         |
|         +--+ index=5  --> KID = 0x5f
|
Epoch 14 +--+--+ index=3  --> KID = 0x3e
|         |
|         +--+ index=7  --> KID = 0x7e
|         |
|         +--+ index=20 -> KID = 0x14e
|
...

```

Internet-Draft

SFrame

August 2021

MLS also provides an authenticated signing key pair for each participant. When SFrame uses signatures, these are the keys used to generate SFrame signatures.

## [6.](#) Media Considerations

### [6.1.](#) SFU

Selective Forwarding Units (SFUs) as described in <https://tools.ietf.org/html/rfc7667#section-3.7> receives the RTP streams from each participant and selects which ones should be forwarded to each of the other participants. There are several approaches about how to do this stream selection but in general, in order to do so, the SFU needs to access metadata associated to each frame and modify the RTP information of the incoming packets when they are transmitted to the received participants.

This section describes how this normal SFU modes of operation interacts with the E2EE provided by SFrame

#### [6.1.1.](#) LastN and RTP stream reuse

The SFU may choose to send only a certain number of streams based on the voice activity of the participants. To reduce the number of SDP O/A required to establish a new RTP stream, the SFU may decide to reuse previously existing RTP sessions or even pre-allocate a predefined number of RTP streams and choose in each moment in time which participant media will be sending through it. This means that in the same RTP stream (defined by either SSRC or MID) may carry media from different streams of different participants. As different keys are used by each participant for encoding their media, the receiver will be able to verify which is the sender of the media coming within the RTP stream at any given point in time, preventing the SFU trying to impersonate any of the participants with another participant's media. Note that in order to prevent impersonation by a malicious participant (not the SFU) usage of the signature is required. In case of video, the a new signature should be started each time a key frame is sent to allow the receiver to identify the source faster after a switch.

### [6.1.2.](#) Simulcast

When using simulcast, the same input image will produce N different encoded frames (one per simulcast layer) which would be processed independently by the frame encryptor and assigned an unique counter for each.

Omara, et al.

Expires 17 February 2022

[Page 17]

---

Internet-Draft

SFrame

August 2021

### [6.1.3.](#) SVC

In both temporal and spatial scalability, the SFU may choose to drop layers in order to match a certain bitrate or forward specific media sizes or frames per second. In order to support it, the sender **MUST** encode each spatial layer of a given picture in a different frame. That is, an RTP frame may contain more than one SFrame encrypted frame with an incrementing frame counter.

## [6.2.](#) Video Key Frames

Forward and Post-Compromise Security requires that the e2ee keys are updated anytime a participant joins/leave the call.

The key exchange happens async and on a different path than the SFU signaling and media. So it may happen that when a new participant joins the call and the SFU side requests a key frame, the sender generates the e2ee encrypted frame with a key not known by the receiver, so it will be discarded. When the sender updates his sending key with the new key, it will send it in a non-key frame, so the receiver will be able to decrypt it, but not decode it.

Receiver will re-request an key frame then, but due to sender and sfu policies, that new key frame could take some time to be generated.

If the sender sends a key frame when the new e2ee key is in use, the time required for the new participant to display the video is minimized.

## [6.3.](#) Partial Decoding

Some codes support partial decoding, where it can decrypt individual packets without waiting for the full frame to arrive, with SFrame

this won't be possible because the decoder will not access the packets until the entire frame is arrived and decrypted.

## 7. Overhead

The encryption overhead will vary between audio and video streams, because in audio each packet is considered a separate frame, so it will always have extra MAC and IV, however a video frame usually consists of multiple RTP packets. The number of bytes overhead per frame is calculated as the following  $1 + \text{FrameCounter length} + 4$  The constant 1 is the SFrame header byte and 4 bytes for the HBH authentication tag for both audio and video packets.

### 7.1. Audio

Using three different audio frame durations 20ms (50 packets/s) 40ms (25 packets/s) 100ms (10 packets/s) Up to 3 bytes frame counter (3.8 days of data for 20ms frame duration) and 4 bytes fixed MAC length.

Counter len	Packets	Overhead	Overhead	Overhead
		bps@20ms	bps@40ms	bps@100ms
1	0-255	2400	1200	480
2	255 - 65K	2800	1400	560
3	65K - 16M	3200	1600	640

Table 2

### 7.2. Video

The per-stream overhead bits per second as calculated for the following video encodings: 30fps@1000Kbps (4 packets per frame) 30fps@512Kbps (2 packets per frame) 15fps@200Kbps (2 packets per frame) 7.5fps@30Kbps (1 packet per frame) Overhead bps = (Counter

length + 1 + 4 ) \* 8 \* fps

Counter len	Frames	Overhead	Overhead	Overhead
		bps@30fps	bps@15fps	bps@7.5fps
1	0-255	1440	1440	720
2	256 - 65K	1680	1680	840
3	56K - 16M	1920	1920	960
4	16M - 4B	2160	2160	1080

Table 3

### 7.3. SFrame vs PERC-lite

[RFC8723] has significant overhead over SFrame because the overhead is per packet, not per frame, and OHB (Original Header Block) which duplicates any RTP header/extension field modified by the SFU.

[I-D.murillo-perc-lite] <https://mailarchive.ietf.org/arch/msg/perc/SB0qMHWz6EsDtz3yIEX0HWp5IEY/> is slightly better because it doesn't use the OHB anymore, however it still does per packet encryption using SRTP. Below the the overheard in [I-D.murillo-perc-lite] implemented by Cosmos Software which uses extra 11 bytes per packet to preserve the PT, SEQ\_NUM, TIME\_STAMP and SSRC fields in addition to the extra MAC tag per packet.

OverheadPerPacket = 11 + MAC length Overhead bps = PacketPerSecond \* OverHeadPerPacket \* 8

Similar to SFrame, we will assume the HBH authentication tag length will always be 4 bytes for audio and video even though it is not the case in this [I-D.murillo-perc-lite] implementation

### [7.3.1.](#) Audio

Overhead bps@20ms	Overhead bps@40ms	Overhead bps@100ms
6000	3000	1200

Table 4

### [7.3.2.](#) Video

Overhead bps@30fps (4 packets per frame)	Overhead bps@15fps (2 packets per frame)	Overhead bps@7.5fps (1 packet per frame)
14400	7200	3600

Table 5

For a conference with a single incoming audio stream (@ 50 pps) and 4 incoming video streams (@200 Kbps), the savings in overhead is  $34800 - 9600 = \sim 25$  Kbps, or  $\sim 3\%$ .

## [8.](#) Security Considerations

### [8.1.](#) No Per-Sender Authentication

SFrame does not provide per-sender authentication of media data. Any sender in a session can send media that will be associated with any other sender. This is because SFrame uses symmetric encryption to protect media data, so that any receiver also has the keys required to encrypt packets for the sender.

### [8.2.](#) Key Management

Key exchange mechanism is out of scope of this document, however every client MUST change their keys when new clients joins or leaves the call for "Forward Secrecy" and "Post Compromise Security".

### [8.3.](#) Authentication tag length

The cipher suites defined in this draft use short authentication tags for encryption, however it can easily support other ciphers with full authentication tag if the short ones are proved insecure.

## [9.](#) IANA Considerations

This document makes no requests of IANA.

## [10.](#) Test Vectors

This section provides a set of test vectors that implementations can use to verify that they correctly implement SFrame encryption and decryption. For each ciphersuite, we provide:

- \* [in] The "base\_key" value (hex encoded)
- \* [out] The "secret", "key", and "salt" values derived from the "base\_key" (hex encoded)
- \* A plaintext value that is encrypted in the following encryption cases
- \* A sequence of encryption cases, including:
  - [in] The "KID" and "CTR" values to be included in the header
  - [out] The resulting encoded header (hex encoded)
  - [out] The nonce computed from the "salt" and "CTR" values

- The ciphertext resulting from encrypting the plaintext with these parameters (hex encoded)

An implementation should reproduce the output values given the input values: \*

- \* An implementation should be able to encrypt with the input



values and the plaintext to produce the ciphertext. \* An implementation must be able to decrypt with the input values and the ciphertext to generate the plaintext.

Line breaks and whitespace within values are inserted to conform to the width requirements of the RFC format. They should be removed before use. These test vectors are also available in JSON format at [\[TestVectors\]](#).

#### [10.1.](#) AES\_CM\_128\_HMAC\_SHA256\_4

CipherSuite: 0x01  
Base Key: 101112131415161718191a1b1c1d1e1f  
Key: 343d3290f5c0b936415bea9a43c6f5a2  
Salt: 42d662fbad5cd81eb3aad79a  
Plaintext: 46726f6d2068656176656e6c79206861  
726d6f6e79202f2f205468697320756e  
6976657273616c206672616d65206265  
67616e

KID: 0x7  
CTR: 0x0  
Header: 1700  
Nonce: 42d662fbad5cd81eb3aad79a  
Ciphertext: 170065c67c6fb784631a7db1b589ffb6  
2d75b78e28b0899e632fbbee3b944747  
a6382d75b6bd3788dc7b71b9295c7fb9  
0b5098f7add14ef329

KID: 0x7  
CTR: 0x1  
Header: 1701  
Nonce: 42d662fbad5cd81eb3aad79b  
Ciphertext: 1701ec742e98d667be810f153ff0d4da  
d7969f69b310aa7c6b9cb911e83af09b  
0f0a6d74772d8195c8c9dae3878fd1cb  
10edb4176d12e2387a

KID: 0x7  
CTR: 0x2  
Header: 1702  
Nonce: 42d662fbad5cd81eb3aad798  
Ciphertext: 1702ac9b495d37a1e48c712ade5cba72  
df0bf90f24aa022a454cfb92d8b87cd5  
4335fb6b9eeded6a5aa4e2643d7a0994  
6646001d0a41b09557

KID: 0xf  
CTR: 0xaa  
Header: 190faa  
Nonce: 42d662fbad5cd81eb3aad730  
Ciphertext: 190faaeaa5adc70cae0d6ebd36805fa8  
7d2351dd02c55c751cd351a7fdb7f092  
7b474eae3e800033e08100a440002da1  
7579678b36dc275789d5

KID: 0x1ff  
CTR: 0xaa  
Header: 1a01ffaa  
Nonce: 42d662fbad5cd81eb3aad730  
Ciphertext: 1a01ffaeaa5adc70cae0d6ebd36805f  
a87d2351dd02c55c751cd351a7fdb7f0  
927b474eae3e800033e08100a440002d  
a17579678b36dc9bbe558b

KID: 0x1ff  
CTR: 0xaaaa  
Header: 2a01ffaana  
Nonce: 42d662fbad5cd81eb3aa7d30  
Ciphertext: 2a01ffaanaa170500225053f1a044e51c  
4e91a6b783f69b1714fb31531d95d5b8  
dd7926c2d43405b4f32b9b49dd6e0aa5  
aba2427a94ff97f81dcd2826

KID: 0xffffffffffffffff  
CTR: 0xffffffffffffffff  
Header: 7fffffffffffffffffffffffffffffffff  
Nonce: 42d662fbada327e14c552865  
Ciphertext: 7fffffffffffffffffffffffffffffffffdc  
a3655d5117bc838d6f4382ca468a4f99  
2ff77bfd1d2f4391be6b33e8fb638dc4  
8aa82f57fd91430c714def0b2089c8bf  
b2ac9da92415

## [10.2.](#) AES\_CM\_128\_HMAC\_SHA256\_8

Internet-Draft

SFrame

August 2021

CipherSuite: 0x02  
Base Key: 202122232425262728292a2b2c2d2e2f  
Key: 3fce747d505e46ec9b92d9f58ee7a5d4  
Salt: 77fbf5f1d82c73f6d2b353c9  
Plaintext: 46726f6d2068656176656e6c79206861  
726d6f6e79202f2f205468697320756e  
6976657273616c206672616d65206265  
67616e

KID: 0x7  
CTR: 0x0  
Header: 1700  
Nonce: 77fbf5f1d82c73f6d2b353c9  
Ciphertext: 1700647513fce71aab7fed1e904fd924  
0343d77092c831f0d58fde0985a0f3e5  
ba4020e87a7b9c870b5f8f7f628d2769  
0cc1e571e4d391da5fbf428433

KID: 0x7  
CTR: 0x1  
Header: 1701  
Nonce: 77fbf5f1d82c73f6d2b353c8  
Ciphertext: 17019e1bdf713b0d4c02f3dbf50a72ea  
773286e7da38f3872cc734f3e1b1448a  
ab5009b424e05495214f96d02e4e8f8d  
a975cc808f40f67cafead7cffd

KID: 0x7  
CTR: 0x2  
Header: 1702  
Nonce: 77fbf5f1d82c73f6d2b353cb  
Ciphertext: 170220ad36fd9191453ace2d36a175ad  
8a69c1f16b8613d14b4f7ef30c68bc56  
09e349df38155cc1544d7dbfa079e3fa  
ae3c7883b448e75047caafe05b

KID: 0xf  
CTR: 0xaa  
Header: 190faa  
Nonce: 77fbf5f1d82c73f6d2b35363  
Ciphertext: 190faadab9b284a4b9e3aea36b9cdcae  
4a58e141d3f0f52f240ef80a93dbb8d8

09ede01b05b2cace18a22fb39c032724  
481c5baa181d6b793458355b0f30

Internet-Draft

SFrame

August 2021

KID: 0x1ff  
CTR: 0xaa  
Header: 1a01ffaa  
Nonce: 77fbf5f1d82c73f6d2b35363  
Ciphertext: 1a01ffaadab9b284a4b9e3aea36b9cdc  
ae4a58e141d3f0f52f240ef80a93dbb8  
d809ede01b05b2cace18a22fb39c0327  
24481c5baa181dad5ad0f89a1cfb58

KID: 0x1ff  
CTR: 0xaaaa  
Header: 2a01ffaana  
Nonce: 77fbf5f1d82c73f6d2b3f963  
Ciphertext: 2a01ffaanaae0f2384e4dc472cb92238b  
5b722159205c4481665484de66985f15  
5071655ca4e9d1c998781f8c7d439f8d  
1eb6f6071cd80fd22f7e8846ba91036a

KID: 0xffffffffffffffff  
CTR: 0xffffffffffffffff  
Header: 7fffffffffffffffffffffffffffffffff  
Nonce: 77fbf5f1d8d38c092d4cac36  
Ciphertext: 7fffffffffffffffffffffffffffffffff4b  
8c7429d7ee83eec5e53808b80555b1f8  
0b1df9d97877575fa1c7fa35b6119c68  
ed6543020075959dcc4ca6900a7f9cf1  
d936b640bba41ca62f6c

### [10.3.](#) AES\_GCM\_128\_SHA256

CipherSuite: 0x03  
Base Key: 303132333435363738393a3b3c3d3e3f  
Key: 2ea2e8163ff56c0613e6fa9f20a213da  
Salt: a80478b3f6fba19983d540d5  
Plaintext: 46726f6d2068656176656e6c79206861

726d6f6e79202f2f205468697320756e  
6976657273616c206672616d65206265  
67616e

KID: 0x7  
CTR: 0x0  
Header: 1700  
Nonce: a80478b3f6fba19983d540d5  
Ciphertext: 17000e426255e47ed70dd7d15d69d759  
bf459032ca15f5e8b2a91e7d348aa7c1  
86d403f620801c495b1717a35097411a  
a97cbb140671eb3b49ac3775926db74d  
57b91e8e6c

KID: 0x7  
CTR: 0x1  
Header: 1701  
Nonce: a80478b3f6fba19983d540d4  
Ciphertext: 170103bbafa34ada8a6b9f2066bc34a1  
959d87384c9f4b1ce34fed58e938bde1  
43393910b1aeb55b48d91d5b0db3ea67  
e3d0e02b843afd41630c940b1948e72d  
d45396a43a

KID: 0x7  
CTR: 0x2  
Header: 1702  
Nonce: a80478b3f6fba19983d540d7  
Ciphertext: 170258d58adebd8bf6f3cc0c1fcacf34  
ba4d7a763b2683fe302a57f1be7f2a27  
4bf81b2236995fec1203cadb146cd402  
e1c52d5e6a10989dfe0f4116da1ee4c2  
fad0d21f8f

KID: 0xf  
CTR: 0xaa  
Header: 190faa  
Nonce: a80478b3f6fba19983d5407f  
Ciphertext: 190faad0b1743bf5248f90869c945636  
6d55724d16bbe08060875815565e90b1  
14f9ccbdba192422b33848a1ae1e3bd2  
66a001b2f5bb727112772e0072ea8679

ca1850cf11d8

KID: 0x1ff  
CTR: 0xaa  
Header: 1a01ffaa  
Nonce: a80478b3f6fba19983d5407f  
Ciphertext: 1a01ffaad0b1743bf5248f90869c9456  
366d55724d16bbe08060875815565e90  
b114f9ccbdba192422b33848a1ae1e3b  
d266a001b2f5bbc9c63bd3973c19bd57  
127f565380ed4a

KID: 0x1ff  
CTR: 0xaaaa  
Header: 2a01ffaana  
Nonce: a80478b3f6fba19983d5ea7f  
Ciphertext: 2a01ffaanaa9de65e21e4f1ca2247b879  
43c03c5cb7b182090e93d508dcfb76e0  
8174c6397356e682d2eaddabc0b3c101  
8d2c13c3570f61c1beaab805f27b565e  
1329a823a7a649b6

KID: 0xffffffffffffffff  
CTR: 0xffffffffffffffff  
Header: 7fffffffffffffffffffffffffffffffff  
Nonce: a80478b3f6045e667c2abf2a  
Ciphertext: 7fffffffffffffffffffffffffffffffff09  
981bdcadad80e380b6f74cf6afdbce946  
839bedadd57578bfcd809dbcea535546  
cc24660613d2761adea852155785011e  
633534f4ecc3b8257c8d34321c27854a  
1422

#### [10.4.](#) AES\_GCM\_256\_SHA512

CipherSuite: 0x04  
Base Key: 404142434445464748494a4b4c4d4e4f  
505152535455565758595a5b5c5d5e5f  
Key: 436774b0b5ae45633d96547f8f3cb06c  
8e6628eff2e4255b5c4d77e721aa3355  
Salt: 31ed26f90a072e6aee646298  
Plaintext: 46726f6d2068656176656e6c79206861  
726d6f6e79202f2f205468697320756e  
6976657273616c206672616d65206265  
67616e  
  
KID: 0x7  
CTR: 0x0  
Header: 1700  
Nonce: 31ed26f90a072e6aee646298  
Ciphertext: 1700f3e297c1e95207710bd31ccc4ba3  
96fbef7b257440bde638ff0f3c891154  
0136df61b26220249d6c432c245ae8d5  
5ef45bfccf32530a15aeaaf313a03838  
e51bd45652

KID: 0x7  
CTR: 0x1  
Header: 1701  
Nonce: 31ed26f90a072e6aee646299  
Ciphertext: 170193268b0bf030071bfff443bb6b447  
1bdfb1cc81bc9625f4697b0336ff4665  
d15f152f02169448d8a967fb06359a87  
d2145398de0ce3fbe257b0992a3da153  
7590459f3c  
  
KID: 0x7  
CTR: 0x2  
Header: 1702  
Nonce: 31ed26f90a072e6aee64629a

Ciphertext: 1702649691ba27c4c01a41280fba4657  
c03fa7fe21c8f5c862e9094227c3ca3e  
c0d9468b1a2cb060ff0978f25a24e6b1  
06f5a6e1053c1b8f5fce794d88a0e481  
8c081e18ea

KID: 0xf  
CTR: 0xaa  
Header: 190faa  
Nonce: 31ed26f90a072e6aee646232  
Ciphertext: 190faa2858c10b5ddd231c1f26819490  
521678603a050448d563c503b1fd890d  
02ead01d754f074ecb6f32da9b2f3859  
f380b4f47d4edd1e15f42f9a2d7ecfac  
99067e238321

KID: 0x1ff  
CTR: 0xaa  
Header: 1a01ffaa  
Nonce: 31ed26f90a072e6aee646232  
Ciphertext: 1a01ffaa2858c10b5ddd231c1f268194  
90521678603a050448d563c503b1fd89  
0d02ead01d754f074ecb6f32da9b2f38  
59f380b4f47d4e3bf7040eb10ec25b81  
26b2ce7b1d9d31

KID: 0x1ff  
CTR: 0xaaaa  
Header: 2a01ffaaaa  
Nonce: 31ed26f90a072e6aee64c832  
Ciphertext: 2a01ffaaaad9bc6a258a07d210a814d5  
45eca70321c0e87498ada6e5c708b7ea  
d162ffcf4fbaba1eb82650590a87122b



4d95fe36bd88b278812166d26e046ed0  
a530b7ee232ee0f2

KID: 0xfffffffffffffffff  
CTR: 0xfffffffffffffffff  
Header: 7fffffffffffffffffffffffffffffffff  
Nonce: 31ed26f90af8d195119b9d67  
Ciphertext: 7fffffffffffffffffffffffffffffffffaf  
480d4779ce0c02b5137ee6a61e026c04  
ac999cb0c97319feceeb258d58df23bc  
e14979e5c67a431777b34498062e72f9  
39ca42ec84ffbc7b50eff923f515a2df  
760c

## [11.](#) References

### [11.1.](#) Normative References

- [RFC2119] Bradner, S., "Key words for use in RFCs to Indicate Requirement Levels", [BCP 14](#), [RFC 2119](#), DOI 10.17487/RFC2119, March 1997, <<https://www.rfc-editor.org/info/rfc2119>>.
- [RFC5116] McGrew, D., "An Interface and Algorithms for Authenticated Encryption", [RFC 5116](#), DOI 10.17487/RFC5116, January 2008, <<https://www.rfc-editor.org/info/rfc5116>>.
- [RFC5869] Krawczyk, H. and P. Eronen, "HMAC-based Extract-and-Expand Key Derivation Function (HKDF)", [RFC 5869](#), DOI 10.17487/RFC5869, May 2010, <<https://www.rfc-editor.org/info/rfc5869>>.
- [RFC8174] Leiba, B., "Ambiguity of Uppercase vs Lowercase in [RFC 2119](#) Key Words", [BCP 14](#), [RFC 8174](#), DOI 10.17487/RFC8174, May 2017, <<https://www.rfc-editor.org/info/rfc8174>>.

### [11.2.](#) Informative References

- [I-D.ietf-mls-architecture]  
Omara, E., Beurdouche, B., Rescorla, E., Inguva, S., Kwon, A., and A. Duric, "The Messaging Layer Security (MLS)

Architecture", Work in Progress, Internet-Draft, [draft-ietf-mls-architecture-06](https://www.ietf.org/archive/id/draft-ietf-mls-architecture-06), 8 March 2021, <<https://www.ietf.org/archive/id/draft-ietf-mls-architecture-06.txt>>.

[I-D.ietf-mls-protocol]

Barnes, R., Beurdouche, B., Millican, J., Omara, E., Cohn-Gordon, K., and R. Robert, "The Messaging Layer Security (MLS) Protocol", Work in Progress, Internet-Draft, [draft-ietf-mls-protocol-11](https://www.ietf.org/archive/id/draft-ietf-mls-protocol-11), 22 December 2020, <<https://www.ietf.org/archive/id/draft-ietf-mls-protocol-11.txt>>.

[I-D.murillo-perc-lite]

Murillo, S. G. and A. Gouaillard, "End to End Media Encryption Procedures", Work in Progress, Internet-Draft, [draft-murillo-perc-lite-01](https://www.ietf.org/archive/id/draft-murillo-perc-lite-01), 12 May 2020, <<https://www.ietf.org/archive/id/draft-murillo-perc-lite-01.txt>>.

[RFC3711] Baugher, M., McGrew, D., Naslund, M., Carrara, E., and K. Norrman, "The Secure Real-time Transport Protocol (SRTP)", [RFC 3711](https://www.rfc-editor.org/info/rfc3711), DOI 10.17487/RFC3711, March 2004, <<https://www.rfc-editor.org/info/rfc3711>>.

[RFC8723] Jennings, C., Jones, P., Barnes, R., and A.B. Roach, "Double Encryption Procedures for the Secure Real-Time Transport Protocol (SRTP)", [RFC 8723](https://www.rfc-editor.org/info/rfc8723), DOI 10.17487/RFC8723, April 2020, <<https://www.rfc-editor.org/info/rfc8723>>.

[TestVectors]

"SFrame Test Vectors", 2021, <<https://github.com/eomara/sframe/blob/master/test-vectors.json>>.

Authors' Addresses

Emad Omara  
Apple

Email: [eomara@apple.com](mailto:eomara@apple.com)

Justin Uberti  
Google

Email: [juberti@google.com](mailto:juberti@google.com)

Internet-Draft

SFrame

August 2021

Alexandre GOUAILLARD  
CoSMo Software

Email: Alex.GOUAILLARD@cosmosoftware.io

Sergio Garcia Murillo  
CoSMo Software

Email: sergio.garcia.murillo@cosmosoftware.io

