

Network Working Group
Internet-Draft
Intended status: Informational
Expires: August 22, 2013

C. Shao
H. Deng
China Mobile
F. Bari
AT&T
R. Zhang
China Telecom
S. Matsushima
SoftBank Telecom
February 18, 2013

Hybrid-MAC Model for CAPWAP
draft-shao-opsawg-capwap-hybridmac-00

Abstract

The CAPWAP protocol supports two modes of operation: Split and Local MAC (medium access control), which has been described in [\[RFC5415\]](#). There are many functions in IEEE 802.11 MAC layer that have not yet been clearly defined whether they belong to either the AP (Access Point) or the AC (Access Controller) in the Split and Local modes. Because different vendors have their own definition of these two models, depending upon the vendor many MAC layer functions continue to be mapped differently to either the AP or AC. If there is no clear definition of split MAC and local MAC, then operators will not only need to perform vendor specific configurations in their network but will continue to experience difficulty in interoperating APs and ACs from different vendors.

Status of this Memo

This Internet-Draft is submitted in full conformance with the provisions of [BCP 78](#) and [BCP 79](#).

Internet-Drafts are working documents of the Internet Engineering Task Force (IETF). Note that other groups may also distribute working documents as Internet-Drafts. The list of current Internet-Drafts is at <http://datatracker.ietf.org/drafts/current/>.

Internet-Drafts are draft documents valid for a maximum of six months and may be updated, replaced, or obsoleted by other documents at any time. It is inappropriate to use Internet-Drafts as reference material or to cite them other than as "work in progress."

This Internet-Draft will expire on August 22, 2013.

Copyright Notice

Internet-Draft

capwap

February 2013

Copyright (c) 2013 IETF Trust and the persons identified as the document authors. All rights reserved.

This document is subject to [BCP 78](#) and the IETF Trust's Legal Provisions Relating to IETF Documents (<http://trustee.ietf.org/license-info>) in effect on the date of publication of this document. Please review these documents carefully, as they describe your rights and restrictions with respect to this document. Code Components extracted from this document must include Simplified BSD License text as described in Section 4.e of the Trust Legal Provisions and are provided without warranty as described in the Simplified BSD License.

Table of Contents

1.	Introduction	3
2.	Conventions used in this document	3
3.	The difference between Local MAC and Split MAC	3
4.	Functions in Local MAC and Split MAC	4
5.	Hybrid-MAC model recommendation	5
6.	Hybrid-MAC model Frames Exchange	6
7.	Security Considerations	7
8.	IANA Considerations	7
9.	Contributors	8
10.	Normative References	8
	Authors' Addresses	8

Internet-Draft

capwap

February 2013

1. Introduction

The CAPWAP protocol supports two modes of operation: Split and Local MAC (medium access control), which has been described in [[RFC5415](#)]. In Split MAC mode, all L2 wireless data and management frames are encapsulated via the CAPWAP protocol and exchanged between the AC and the AP. The Local MAC mode of operation allows for the data frames to be either locally bridged or tunneled as 802.3 frames. The latter implies that the AP performs the 802.11 Integration function. Unfortunately, there are many functions that have not yet been clearly defined whether they belong to either the AP or the AC in the Split and Local modes. Because different vendors have their own definition of the two models, many MAC layer functions are mapped differently to either the AP or the AC by different vendors. Therefore, depending upon the vendor, the operators in their deployments have to perform different configurations based on implementation of the two modes by their vendor. If there is no clear definition of split MAC and local MAC, then operators will continue to experience difficulty in interoperating APs and ACs from different vendors.

2. Conventions used in this document

The key words "MUST", "MUST NOT", "REQUIRED", "SHALL", "SHALL NOT", "SHOULD", "SHOULD NOT", "RECOMMENDED", "MAY", and "OPTIONAL" in this document are to be interpreted as described in [[RFC2119](#)].

3. The difference between Local MAC and Split MAC

The main difference between Local MAC and Split MAC lies in the processing of the wireless frames. This is shown in Figure 1 where depending upon the mode, either the AP or the AC performs the 802.11 Integration function. According to the 802.11 protocol definition, the 802.11 wireless frame is divided into three kinds of frames,

including wireless control frames, wireless management frames, and wireless data frames.

Wireless control frames, such as TS, CTS, ACK, PS-POLL, etc., are processed locally by AP in both Local MAC and Split MAC. However, wireless management frames, including Beacon, Probe, Association, Authentication, are processed differently in the Local MAC and the Split MAC. In the Local MAC, depending upon the vendor wireless management frames can be processed in the AP or the AC. In the case of Split MAC, the real-time part of wireless frames are processed in AP, while the non-real-time frames are processed in the AC. This is shown in Figure 2. In Split MAC mode, the wireless data frames

received from a mobile device are directly encapsulated by the AP and forwarded to the AC. The Local MAC mode of operation allows data frames to be processed locally by the AP and then forwarded to the AC.

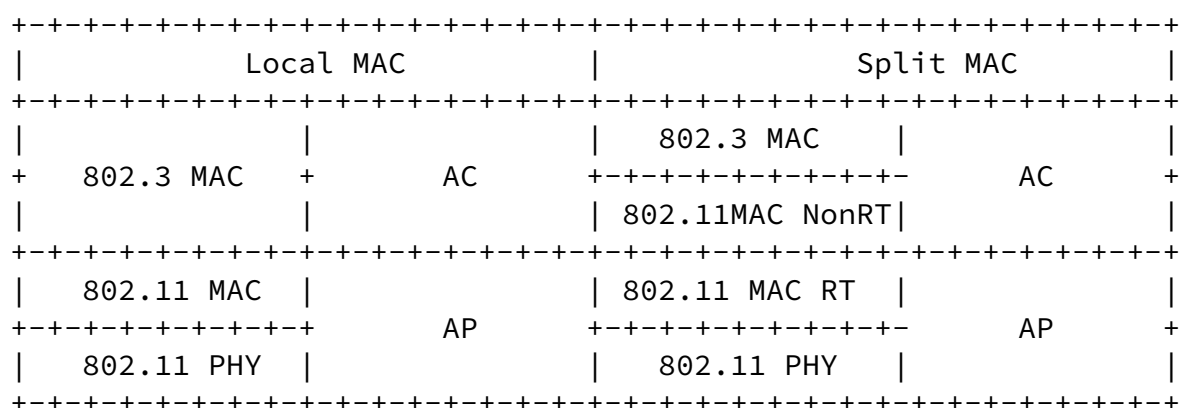


Figure 1: The comparison between Local MAC and Split MAC

4. Functions in Local MAC and Split MAC

As shown in Figure 2, main functions are processed in different places in the Local MAC and Split MAC. In addition, for some functions (for example, the Frag. / Defrag. Assoc. / Disassoc / Reassoc., Etc.) the protocol does not explicitly map processing of

such functions to the AP or the AC. Therefore the location of these features becomes vendor specific and this increases the difficulty of interoperability between APs and ACs from different vendors.

Functions describe		Local MAC	Split MAC
Function	Distribution Service	AP/AC	AC
	Integration Service	AP	AC
	Beacon Generation	AP	AP
	Probe Response Generation	AP	AP
	Power Mgmt	AP	AP
	/Packet Buffering		
	Fragmentation	AP	AP/AC
	/Defragmentation		
	Assoc/Disassoc/Reassoc	AP/AC	AC
	Classifying	AP	AC
IEEE 802.11 QoS	Scheduling	AP	AP/AC

		+-----+	
		Queuing	AP
+-----+		+-----+	
		IEEE 802.1X/EAP	AC
+ IEEE		+-----+	
802.11 RSN		RSNA Key Management	AC
+ (WPA2)		+-----+	
		IEEE 802.11	AP/AC
+		Encryption/Decryption	
+-----+		+-----+	

Figure 2: Functions in Local MAC and Split MAC

5. Hybrid-MAC model recommendation

As discussed above, if the functions have been clearly defined to be implemented in AP or AC, the interoperability will be much better between different vendors products. To achieve this goal a common Hybrid-MAC model, as shown in Figure 3, is proposed.

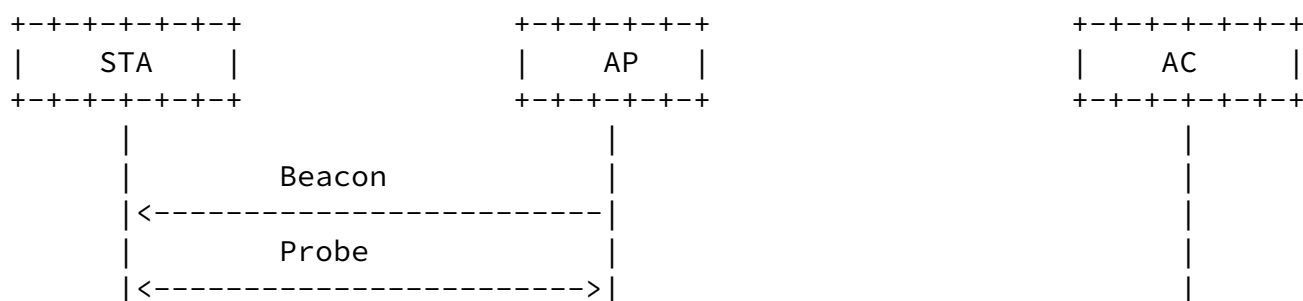
		+-----+	
		Functions describe	Hybrid-MAC
+-----+		+-----+	
		Distribution Service	AC
+		+-----+	
		Integration Service	AC
+		+-----+	
		Beacon Generation	AP
+		+-----+	
		Probe Response Generation	AP
+		+-----+	
Function		Power Mgmt	AP
+		/Packet Buffering	
		+-----+	
		Fragmentation	AC

+		/Defragmentation			
		+++++	+++++	+++++	+++++
		Assoc/Disassoc/Reassoc		AC	
+	+	+++++	+++++	+++++	+++++
		Classifying		AC	
+	IEEE	+++++	+++++	+++++	+++++
	802.11 QoS	Scheduling		AP	
+		+++++	+++++	+++++	+++++
		Queuing		AP	
+	+	+++++	+++++	+++++	+++++
		IEEE 802.1X/EAP		AC	
+	IEEE	+++++	+++++	+++++	+++++
	802.11 RSN	RSNA Key Management		AC	
+	(WPA2)	+++++	+++++	+++++	+++++
		IEEE 802.11		AP	
+		Encryption/Decryption			
	+	+++++	+++++	+++++	+++++

Figure 3: Functions in Hybrid MAC

6. Hybrid-MAC model Frames Exchange

An example of frame exchange using the proposed Hybrid-MAC Model shown in Figure 4.



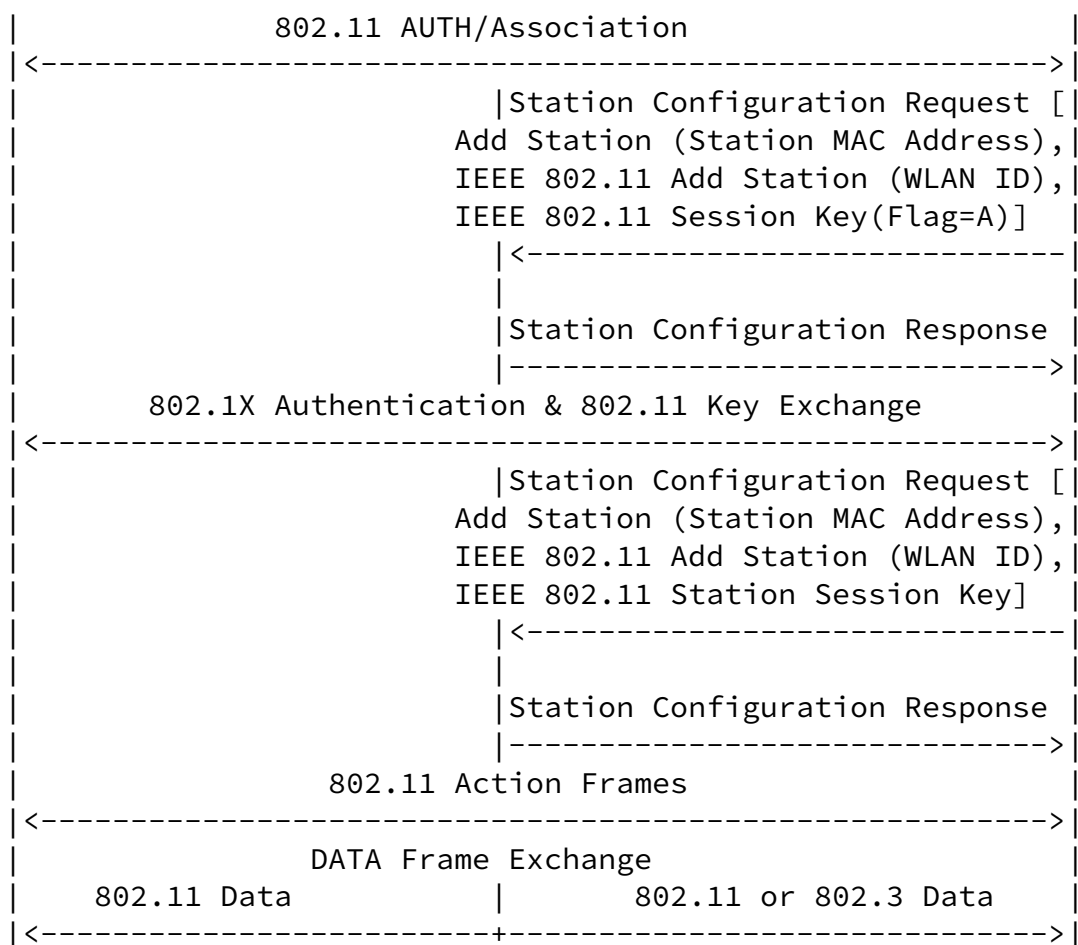


Figure 4: Hybrid-MAC model Frames Exchange

7. Security Considerations

TBD

8. IANA Considerations

None

9. Contributors

Naibao Zhou zhounaibao@chinamobile.com

10. Normative References

- [RFC2119] Bradner, S., "Key words for use in RFCs to Indicate Requirement Levels", [BCP 14](#), [RFC 2119](#), March 1997.
- [RFC4564] Govindan, S., Cheng, H., Yao, ZH., Zhou, WH., and L. Yang, "Objectives for Control and Provisioning of Wireless Access Points (CAPWAP)", [RFC 4564](#), July 2006.
- [RFC5415] Calhoun, P., Montemurro, M., and D. Stanley, "Control And Provisioning of Wireless Access Points (CAPWAP) Protocol Specification", [RFC 5415](#), March 2009.

Authors' Addresses

Chunju Shao
China Mobile
No.32 Xuanwumen West Street
Beijing 100053
China

Email: shaochunju@chinamobile.com

Hui Deng
China Mobile
No.32 Xuanwumen West Street
Beijing 100053
China

Email: denghui@chinamobile.com

Farooq Bari
AT&T
7277 164th Ave NE
Redmond WA 98052
USA

Email: farooq.bari@att.com

Rong Zhang
China Telecom
No.109 Zhongshandadao avenue
Tianhe District,
Guangzhou 510630
China

Email: zhangr@gsta.com

Satoru Matsushima
SoftBank Telecom
1-9-1 Higashi-Shinbashi, Munato-ku
Tokyo
Japan

Email: satoru.matsushima@g.softbank.co.jp

