

NETCONF Working Group
Internet-Draft
Intended status: Standards Track
Expires: May 2, 2021

Q. Wu
Q. Ma
Huawei
P. Liu
Y. Fu
China Mobile
October 29, 2020

Self describing data Node tag capability
draft-cao-netconf-notif-node-tag-capabilities-03

Abstract

Before a client application subscribes to updates from a datastore, server capabilities related to "Subscription to YANG Datastores" can be advertised using YANG Instance Data format. These server capabilities can be documented at implement time or reported at run-time.

This document proposes a YANG module for self describing data Object tag capability which augments system capabilities model and provide additional self describing data node attributes associated with node selectors within per-node capabilities.

Status of This Memo

This Internet-Draft is submitted in full conformance with the provisions of [BCP 78](#) and [BCP 79](#).

Internet-Drafts are working documents of the Internet Engineering Task Force (IETF). Note that other groups may also distribute working documents as Internet-Drafts. The list of current Internet-Drafts is at <https://datatracker.ietf.org/drafts/current/>.

Internet-Drafts are draft documents valid for a maximum of six months and may be updated, replaced, or obsoleted by other documents at any time. It is inappropriate to use Internet-Drafts as reference material or to cite them other than as "work in progress."

This Internet-Draft will expire on May 2, 2021.

Copyright Notice

Copyright (c) 2020 IETF Trust and the persons identified as the document authors. All rights reserved.

Internet-Draft

Node Tags Capability

October 2020

This document is subject to [BCP 78](#) and the IETF Trust's Legal Provisions Relating to IETF Documents (<https://trustee.ietf.org/license-info>) in effect on the date of publication of this document. Please review these documents carefully, as they describe your rights and restrictions with respect to this document. Code Components extracted from this document must include Simplified BSD License text as described in Section 4.e of the Trust Legal Provisions and are provided without warranty as described in the Simplified BSD License.

Table of Contents

1.	Introduction	2
1.1.	Terminology	3
2.	Self-explanation data Node tag capability	3
2.1.	Tree Diagram	4
3.	YANG Module	4
4.	IANA Considerations	6
4.1.	Updates to the IETF XML Registry	6
4.2.	Updates to the YANG Module Names Registry	6
5.	Security Considerations	7
6.	Contributors	7
7.	References	7
7.1.	Normative References	7
7.2.	Informative References	9
Appendix A.	Targeted data object subscription example	9
	Authors' Addresses	11

[1.](#) Introduction

As described in [I-D.netconf-notification-capabilities], a server supporting YANG-Push MAY have a number of capabilities such as

- o Supported (reporting) periods for periodic subscriptions;
- o Maximum number of objects that can be sent in an update;
- o Supported dampening periods for on-change subscriptions;
- o The set of data nodes for which on-change notification is supported.

Notification capability model defined in [I-D.netconf-notification-

capabilities] allows a client to discover basic system capability and YANG-Push related capabilities both at implementation-time and run-time. Without using this notification capability, it might lead to unexpected failures or additional message exchanges for NETCONF

clients to discover data objects with specific capability supported by a NETCONF server.

When all telemetry data on the server subscribed by a particular subscriber is huge, it becomes more likely that a burst of streamed data may temporarily overwhelm a receiver and consume expensive computing and storage resource. Accordingly, there is a need for filtering subscribed telemetry data on a server based on server capabilities, which can greatly reduce the amount of data to be streamed out to the destination.

However without telemetry data classification or prior knowledge of data objects correlation relationship, it is difficult for NETCONF clients to automatically select target data objects that are of interest to the client applications, e.g., identify a set of objects from different YANG data modules which have a common characteristic, collect specific object type nodes for multiple dimensional network visibility analysis.

This document proposes a YANG module for self describing data Node tag capability which augments System Capabilities model and provide additional self describing data node tag attributes associated with node selector for queries filtering.

1.1. Terminology

The key words "MUST", "MUST NOT", "REQUIRED", "SHALL", "SHALL NOT", "SHOULD", "SHOULD NOT", "RECOMMENDED", "NOT RECOMMENDED", "MAY", and "OPTIONAL" in this document are to be interpreted as described in [BCP 14](#) [[RFC2119](#)] [[RFC8174](#)] when, and only when, they appear in all capitals, as shown here.

2. Self-explanation data Node tag capability

The YANG module `ietf-notification-capabilities` defined in [I-D.netconf-notification-capabilities] specifies the following server

capabilities related to YANG Push:

- o A set of capabilities related to the amount of notifications the server can send out
- o Specification of which data nodes support on-change notifications.
- o Capability values can be specified on server level, datastore level or on specific data nodes (and their contained sub-tree) of a specific datastore. Capability values on a smaller, more specific part of the server's data always override more generic values.

- o On-change capability is not specified on a server level as different datastores usually have different on-change capabilities. On a datastore level on-change capability for configuration and state data can be specified separately.

These server capabilities can be provided either at implementation time or reported at run time.

This document augments system capabilities model and provide additional data node self explanation tag attributes associated with node selector within per-node capabilities:

- o Specification of which data objects (e.g., data object tagged with object tag, property subobject tag, metri subobject tag) they can push to the target recipient;
- o Specification of metric group tag associated with a set of metric subobjects;
- o Specfication of multi-source aggregation tag assocaited with specific metric subobject;

[2.1.](#) Tree Diagram

The following tree diagram [[RFC8340](#)] provides an overview of the data model.

```
module: ietf-self-describing-capabilities
augment /sysc:system-capabilities/sysc:datastore-capabilities/ +
```

```

    sysc:per-node-capabilities/sys:node-selection/sys:node-selector:
+--ro self-describing-attributes
    +--ro opm-tag*                tags:tag
    +--ro metric-group            tags:tag
    +--ro multi-source-tag        tags:tag

```

3. YANG Module

```

<CODE BEGINS> file "ietf-self-describing-capabilities.yang"
module iETF-self-describing-capabilities {
  yang-version 1.1;
  namespace urn:ietf:params:xml:ns:yang:ietf-self-description-capabilities;
  prefix sdc;
  import iETF-system-capabilities { prefix sysc ; }
  import iETF-module-tags { prefix tags; }
  organization
    "IETF NETMOD (Network Modeling) Working Group";
  contact
    "WG Web:  <https://tools.ietf.org/wg/netconf/>

```

Wu, et al.

Expires May 2, 2021

[Page 4]

Internet-Draft

Node Tags Capability

October 2020

WG List: <<mailto:netconf@ietf.org>>

Editor: Qin Wu
 <<mailto:bill.wu@huawei.com>>
 Qiufang Ma
 <<mailto:maqiufang1@huawei.com>>
 Peng Liu
 <liupengyjy@chinamobile.com>
 Hui Cai
 <caihui@chinamobile.com>;

description

"This module defines an extension to System Capabilities model and provides additional self explanation data node tag attributes associated with node selector for queries filtering.

Copyright (c) 2020 IETF Trust and the persons identified as authors of the code. All rights reserved.

Redistribution and use in source and binary forms, with or without modification, is permitted pursuant to, and subject to the license terms contained in, the Simplified BSD License set forth in [Section 4.c](#) of the IETF Trust's Legal Provisions

Relating to IETF Documents
(<http://trustee.ietf.org/license-info>).

```
This version of this YANG module is part of RFC XXXX;
see the RFC itself for full legal notices.";
revision 2020-07-08 {
description
  "Initial revision";
reference
  "RFC XXXX";
}
augment "/sysc:system-capabilities/sysc:datastore-capabilities" +
  "/sysc:per-node-capabilities" +
    "/sysc:node-selection/sysc:node-selector" {
description "Allows per-node capabilities have additional self-explanation
container self-describing-attributes {
description "self describing attributes for specific data node.";
  leaf-list opm-tag {
    type tags:tag;
    description
      "Object, Property and Metric(OPM) Tags associated with
        specific data object within YANG module.
        See the IANA 'YANG Data Node Tag Prefixes' registry
        for reserved prefixes and the IANA
        'IETF YANG Data Node Tags' registry for IETF tags.";
  }
}
```

```
leaf metric-group {
  type tags:tag;
  description
    "The metric-group can be used to provide correlation between
    different performance metric information associated with YANG
    data node.";
}
leaf multi-source-tag {
  type tags:tag;
  description
    "The multiple source tag can be used to aggregate performance
    metric from different sources.";
}
}
```

```
}  
<CODE ENDS>
```

[4.](#) IANA Considerations

[4.1.](#) Updates to the IETF XML Registry

This document registers a URI in the "IETF XML Registry" [[RFC3688](#)]. Following the format in [[RFC3688](#)], the following registration has been made:

```
URI:  
    urn:ietf:params:xml:ns:yang:ietf-self-describing-capabilities  
Registrant Contact:  
    The IESG.  
XML:  
    N/A; the requested URI is an XML namespace.
```

[4.2.](#) Updates to the YANG Module Names Registry

This document registers one YANG module in the "YANG Module Names" registry [[RFC6020](#)]. Following the format in [[RFC6020](#)], the following registration has been made:

```
name:  
    ietf-self-describing-capabilities  
namespace:  
    urn:ietf:params:xml:ns:yang:ietf-self-describing-capabilities  
prefix:  
    sec  
reference:  
    RFC XXXX (RFC Ed.: replace XXX with actual RFC number and remove  
    this note.)
```

[5.](#) Security Considerations

The YANG module specified in this document defines a schema for data that is designed to be accessed via network management protocols such as NETCONF [[RFC6241](#)] or RESTCONF [[RFC8040](#)]. The lowest NETCONF layer is the secure transport layer, and the mandatory-to-implement secure transport is Secure Shell (SSH) [[RFC6242](#)]. The lowest RESTCONF layer is HTTPS, and the mandatory-to-implement secure transport is TLS

[RFC8446].

The NETCONF Configuration Access Control Model (NACM) [RFC8341] provides the means to restrict access for particular NETCONF or RESTCONF users to a preconfigured subset of all available NETCONF or RESTCONF protocol operations and content.

There are a number of data nodes defined in this YANG module that are writable/creatable/deletable (i.e., config true, which is the default). These data nodes may be considered sensitive in some network environments. Write operations (e.g., edit-config) to these data nodes without proper protection can have a negative effect on network operations. These are the subtrees and data nodes and their sensitivity/vulnerability:

- o /sysc:system-capabilities/sysc:datastore-capabilities/sysc:per-node-capabilities/sys:node-selection/sys:node-selector/sec:self-describing-attributes/sec:opm-tag
- o /sysc:system-capabilities/sysc:datastore-capabilities/sysc:per-node-capabilities/sys:node-selection/sys:node-selector/sec:self-describing-attributes/sec:metric-group
- o /sysc:system-capabilities/sysc:datastore-capabilities/sysc:per-node-capabilities/sys:node-selection/sys:node-selector/sec:self-describing-attributes/sec:multi-source-tag

6. Contributors

The authors would like to thank Ran Tao, Hui Cai for his major contributions to the initial modeling and use cases.

7. References

7.1. Normative References

- [RFC2119] Bradner, S., "Key words for use in RFCs to Indicate Requirement Levels", [BCP 14](#), [RFC 2119](#), DOI 10.17487/RFC2119, March 1997, <<https://www.rfc-editor.org/info/rfc2119>>.

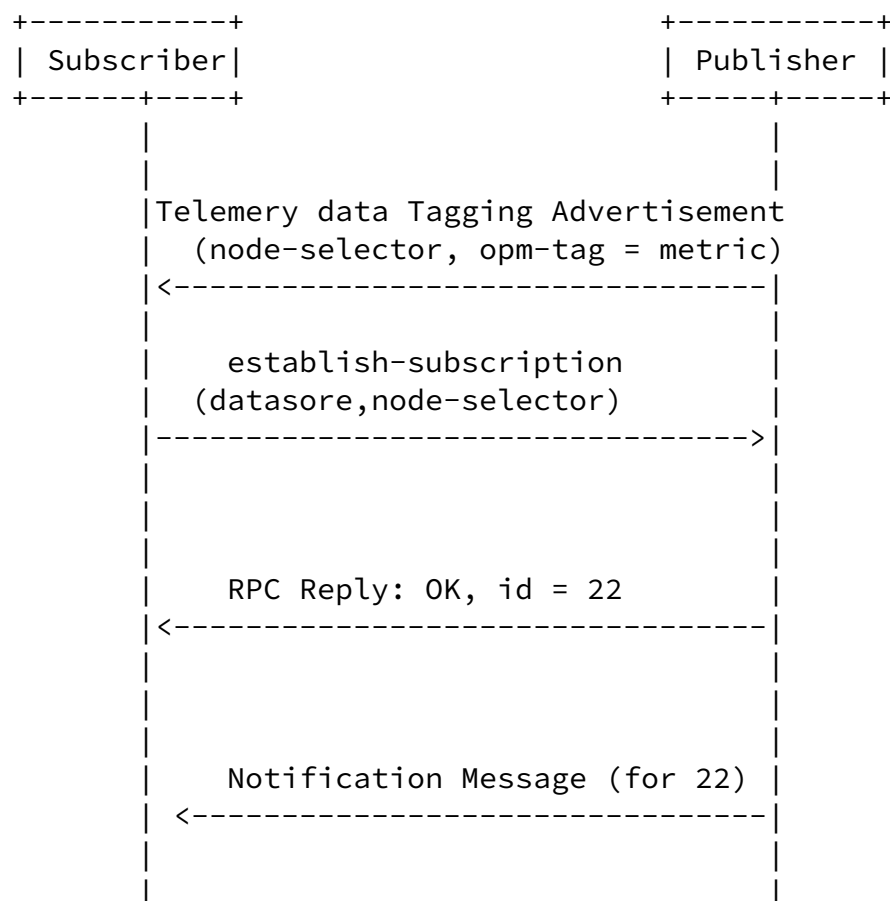
- and A. Bierman, Ed., "Network Configuration Protocol (NETCONF)", [RFC 6241](#), DOI 10.17487/RFC6241, June 2011, <<https://www.rfc-editor.org/info/rfc6241>>.
- [RFC6242] Wasserman, M., "Using the NETCONF Protocol over Secure Shell (SSH)", [RFC 6242](#), DOI 10.17487/RFC6242, June 2011, <<https://www.rfc-editor.org/info/rfc6242>>.
- [RFC7950] Bjorklund, M., Ed., "The YANG 1.1 Data Modeling Language", [RFC 7950](#), DOI 10.17487/RFC7950, August 2016, <<https://www.rfc-editor.org/info/rfc7950>>.
- [RFC8040] Bierman, A., Bjorklund, M., and K. Watsen, "RESTCONF Protocol", [RFC 8040](#), DOI 10.17487/RFC8040, January 2017, <<https://www.rfc-editor.org/info/rfc8040>>.
- [RFC8126] Cotton, M., Leiba, B., and T. Narten, "Guidelines for Writing an IANA Considerations Section in RFCs", [BCP 26](#), [RFC 8126](#), DOI 10.17487/RFC8126, June 2017, <<https://www.rfc-editor.org/info/rfc8126>>.
- [RFC8174] Leiba, B., "Ambiguity of Uppercase vs Lowercase in [RFC 2119](#) Key Words", [BCP 14](#), [RFC 8174](#), DOI 10.17487/RFC8174, May 2017, <<https://www.rfc-editor.org/info/rfc8174>>.
- [RFC8341] Bierman, A. and M. Bjorklund, "Network Configuration Access Control Model", STD 91, [RFC 8341](#), DOI 10.17487/RFC8341, March 2018, <<https://www.rfc-editor.org/info/rfc8341>>.
- [RFC8342] Bjorklund, M., Schoenwaelder, J., Shafer, P., Watsen, K., and R. Wilton, "Network Management Datastore Architecture (NMDA)", [RFC 8342](#), DOI 10.17487/RFC8342, March 2018, <<https://www.rfc-editor.org/info/rfc8342>>.
- [RFC8407] Bierman, A., "Guidelines for Authors and Reviewers of Documents Containing YANG Data Models", [BCP 216](#), [RFC 8407](#), DOI 10.17487/RFC8407, October 2018, <<https://www.rfc-editor.org/info/rfc8407>>.
- [RFC8446] Rescorla, E., "The Transport Layer Security (TLS) Protocol Version 1.3", [RFC 8446](#), DOI 10.17487/RFC8446, August 2018, <<https://www.rfc-editor.org/info/rfc8446>>.

7.2. Informative References

- [RFC3688] Mealling, M., "The IETF XML Registry", [BCP 81](#), [RFC 3688](#), DOI 10.17487/RFC3688, January 2004, <<https://www.rfc-editor.org/info/rfc3688>>.
- [RFC6020] Bjorklund, M., Ed., "YANG - A Data Modeling Language for the Network Configuration Protocol (NETCONF)", [RFC 6020](#), DOI 10.17487/RFC6020, October 2010, <<https://www.rfc-editor.org/info/rfc6020>>.
- [RFC8340] Bjorklund, M. and L. Berger, Ed., "YANG Tree Diagrams", [BCP 215](#), [RFC 8340](#), DOI 10.17487/RFC8340, March 2018, <<https://www.rfc-editor.org/info/rfc8340>>.

Appendix A. Targeted data object subscription example

The following subsections provides targeted data object subscription example. The subscription "id" values of 22 used below is just an example. In production, the actual values of "id" might not be small integers.



The publisher advertise telemetry data node capability to the subscriber to instruct the receiver to subscribe targeted data object with specific characteristics (e.g., performance metric related data object) and specific data path corresponding to the targeted data object.

The following XML example [W3C.REC-xml-20081126] illustrates the advertisement of the list of available target objects:

```
<?xml version="1.0" encoding="UTF-8"?>
<instance-data-set xmlns=\
  "urn:ietf:params:xml:ns:yang:ietf-yang-instance-data">
  <name>acme-router-notification-capabilities</name>
  <content-schema>
    <module>ietf-system-capabilities@2020-03-23</module>
    <module>ietf-notification-capabilities@2020-03-23</module>
    <module>ietf-data-export-capabilities@2020-03-23</module>
  </content-schema>
  <!-- revision date, contact, etc. -->
  <description>Defines the notification capabilities of an acme-router.
    The router only has running, and operational datastores.
    Every change can be reported on-change from running, but
    only config=true nodes and some config=false data from operational.
    Statistics are not reported based on timer based trigger and counter
    threshold based trigger.
  </description>
  <content-data>
    <system-capabilities \
      xmlns="urn:ietf:params:xml:ns:yang:ietf-system-capabilities" \
      xmlns:inc=\
        "urn:ietf:params:xml:ns:yang:ietf-notification-capabilities" \
      xmlns:ds="urn:ietf:params:xml:ns:yang:ietf-datastores">
      <datastore-capabilities>
        <datastore>ds:operational</datastore>
        <per-node-capabilities>
          <node-selector>\
            /if:interfaces/if:interface/if:statistics/if:in-errors\
          </node-selector>
          <sec:self-describing-capabilities>
```

```

        <sec:opm-tag>metric</sec:opm-tag>
        <sec:metric-group>loss</sec:metric-group>
    </sec:self-describing-capabilities>
</per-node-capabilities>
</datastore-capabilities>
</system-capabilities>
</content-data>
</instance-data-set>

```

With telemetry data tagging information carried in the Telemetry data Tagging Advertisement, the subscriber identifies targeted data object and associated data path to the datastore node and sends a establish-subscription RPC to subscribe specific data objects that are interests to the client application from the publisher.

```

<netconf:rpc message-id="101"
  xmlns:netconf="urn:ietf:params:xml:ns:netconf:base:1.0">
  <establish-subscription
    xmlns="urn:ietf:params:xml:ns:yang:ietf-subscribed-notifications"
    xmlns:yp="urn:ietf:params:xml:ns:yang:ietf-yang-push">
    <yp:datastore
      xmlns:ds="urn:ietf:params:xml:ns:yang:ietf-datastores">
      ds:operational
    </yp:datastore>
    <yp:datastore-xpath-filter
      xmlns:ex="https://example.com/sample-data/1.0">
      /if:interfaces/if:interface/if:statistics/if:in-errors
    </yp:datastore-xpath-filter>
    <yp:periodic>
      <yp:period>500</yp:period>
    </yp:periodic>
  </establish-subscription>
</netconf:rpc>

```

The publisher returns specific object type of operational state related to the subscriber.

Authors' Addresses

Qin Wu
Huawei

101 Software Avenue, Yuhua District
Nanjing, Jiangsu 210012
China

Email: bill.wu@huawei.com

Qiufang Ma
Huawei
101 Software Avenue, Yuhua District
Nanjing, Jiangsu 210012
China

Email: maqiufang1@huawei.com

Wu, et al.

Expires May 2, 2021

[Page 11]

Internet-Draft

Node Tags Capability

October 2020

Peng Liu
China Mobile
32 Xuanwumen West St, Xicheng District
Beijing 10053

Email: liupengyjjy@chinamobile.com

Yuexia Fu
China Mobile
32 Xuanwumen West St, Xicheng District
Beijing 10053

Email: yuexiafu@chinamobile.com

