

DMM Working Group
Internet Draft
Intended status: Informational
Expires: October 2014

Hyunsik Yang
Younghan Kim
Soongsil University
April 22, 2014

Routing Optimization with SDN
draft-yang-dmm-sdn-dmm-01.txt

Abstract

DMM is a mobility protocol which has mobility functions to solve the existing problems in the current centralized ones. However, when a mobile node moves to another anchor, the previous flow is forwarded by the previous router. For this reason, the routing optimization could be an issue. This draft proposes a routing optimization method in distributed anchor architecture. In this draft, we applied the SDN concept to DMM architecture for routing optimization.

Status of this Memo

This Internet-Draft is submitted in full conformance with the provisions of [BCP 78](#) and [BCP 79](#).

Internet-Drafts are working documents of the Internet Engineering Task Force (IETF), its areas, and its working groups. Note that other groups may also distribute working documents as Internet-Drafts.

Internet-Drafts are draft documents valid for a maximum of six months and may be updated, replaced, or obsoleted by other documents at any time. It is inappropriate to use Internet-Drafts as reference material or to cite them other than as "work in progress."

The list of current Internet-Drafts can be accessed at <http://www.ietf.org/ietf/1id-abstracts.txt>

The list of Internet-Draft Shadow Directories can be accessed at <http://www.ietf.org/shadow.html>

This Internet-Draft will expire on October 22, 2014.

Copyright Notice

Copyright (c) 2013 IETF Trust and the persons identified as the document authors. All rights reserved.

This document is subject to [BCP 78](#) and the IETF Trust's Legal Provisions Relating to IETF Documents (<http://trustee.ietf.org/license-info>) in effect on the date of publication of this document. Please review these documents carefully, as they describe your rights and restrictions with respect to this document. Code Components extracted from this document must include Simplified BSD License text as described in Section 4.e of the [Trust Legal Provisions](#) and are provided without warranty as described in the Simplified BSD License.

Table of Contents

1.	Introduction	2
2.	Terminology	3
3.	Motivation of DMM Optimization	3
4.	DMM architecture with SDN concept for routing Optimization...	4
4.1.	Handover process and potential optimization routing.....	5
4.2.	Advantage of DMM architecture with SDN	6
4.3.	Advantage of DMM architecture with SDN	7
5.	Security Considerations	7
6.	IANA Considerations	7
7.	References	8
7.1.	Normative References.....	8
7.2.	Informative References.....	8

[1. Introduction](#)

DMM is a technology for distributed network-based mobility management protocol, which has been proposed to solve the problems in the centralized mobility protocols such as PMIPv6 [[RFC5213](#)], MIPv6 [[RFC6275](#)]. In the current research of distributed mobility management, there are two methods for mobility management.

One is the fully distributed mobility management method. The other is the partially distributed mobility method.

In partially distributed method, it decouples the control plane and data plane. It uses a centralized method for control plane and uses a distributed method for data plane. In fully distributed method, it uses a distributed method for both control plane and data plane.

In Partially Distributed, there is one entity which that stores the BCEs allocated for the MNs in the mobility domain. In the current network, when mobile node moves to a new anchor, tunneling must be used between the P-MAAR and a new anchor and the previous flow is forwarded from the P-MAAR to the new anchor until the flow is finished. Therefore, routing may not be optimized in term of bandwidth overhead.

2. Terminology

The key words "MUST", "MUST NOT", "REQUIRED", "SHALL", "SHALL NOT", "SHOULD", "SHOULD NOT", "RECOMMENDED", "MAY", and "OPTIONAL" in this document are to be interpreted as described in [RFC-2119](#) [[RFC2119](#)].

Software Defined Networking (SDN)

The following terms are defined and used in this document:

DMM service (distributed mobility management service)

Function that store the BCEs and support mobility management, it's running on controller.

The following terms used in this document are defined in A PMIPv6-based solution for Distributed Mobility Management [[draft-bernardos-dmm-pmip-03](#)]

Mobility Anchor and Access Router (MAAR)

Central Mobility Database (CMD)

Previous MAAR (P-MAAR)

Serving MAAR (S-MAAR)

3. Motivation of DMM Optimization

In current distributed mobility management, mobile node is allocated IP from initiate anchor. if mobile node moves to another router, mobile node received data through the tunneling between P-MAAR and S-MAAR. that is, tunneling is necessary to receive data from previous router and this method has still optimization routing

In current distributed mobility management, Upon the MN's attachment to initiate router, the binding update message is sent to CMD that stored mobile node status and session DB replies to initiate router with PBA including prefix. When the mobile node moves from its current router to new router, new router sends a binding update message to CMD. CMD sends to update information related to mobile node. The previous router that received update information from CMD establishes a tunnel with the new router to transmit data.

In proposed architecture, mobile node is supported mobility management by binding update to controller with DMM service. Moreover, data path can be set up without data tunneling in our method. because data path is set up by flow table which made by SDN controller. That is, mobile node can be supported optimized path by flow table, without tunneling. There are several benefits and potential ways to support routing optimization.

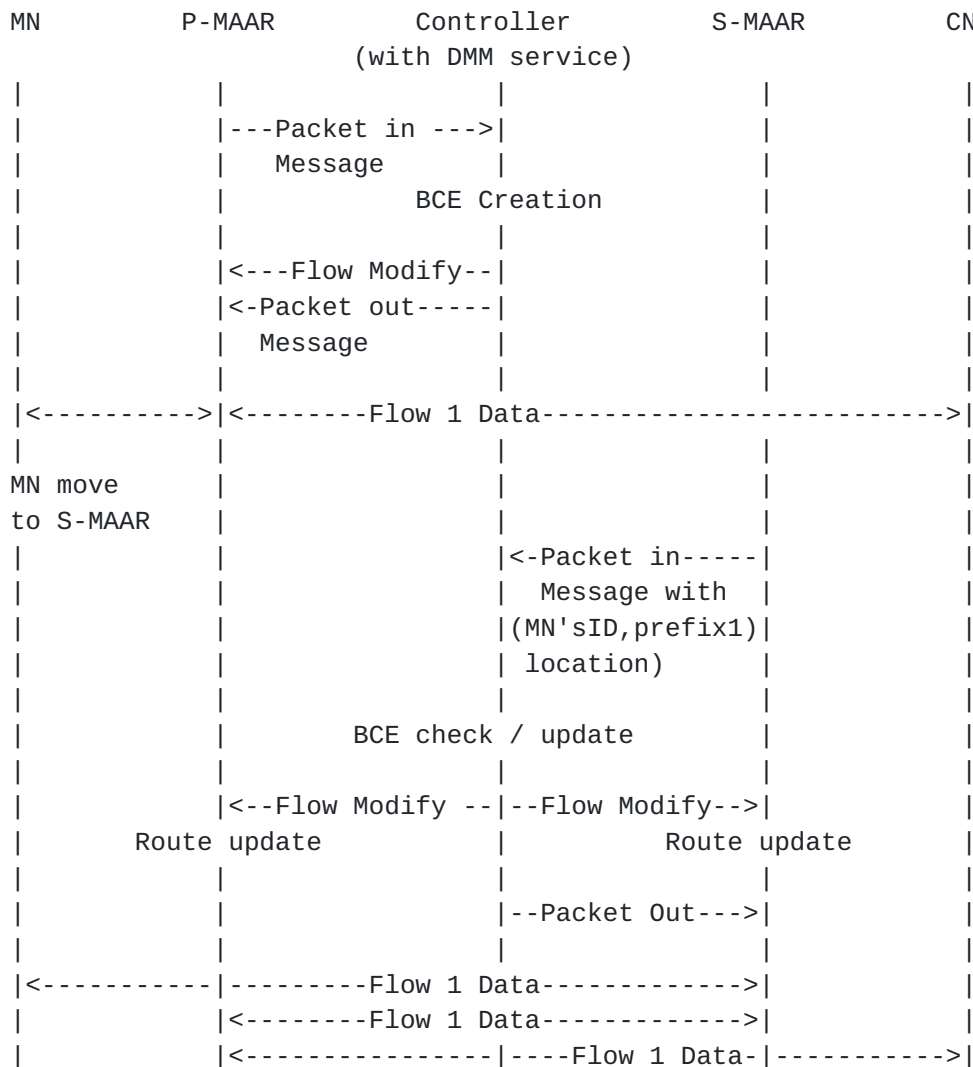


Figure 2. Procedure of DMM with SDN

As a Figure2, When mobile node attach initiate router , MAAR1 sends a Packet in Message with MN's ID, for registration to the controller. Upon accepting this Packet in Message, the controller sends a Packet out Message including the mobile node's prefix1 and controller stored mobile node information in Binding cache entry. For set up the data path, the controller sends a Flow Modify message to set up the flow table in the P-MAAR. If the mobile node moves to the S-MAAR, the S-MAAR sends a Packet in Message with mobile node's ID, prefix1, new location of mobile node(S-MAAR). The controller which receives packet in message will check and update BCE. Upon receiving this Packet in Message, the Controller sends Flow Modify message to P-MAAR, S-MAAR to set up the new data path. On receiving flow modify messages, the S-MAAR and P-MAAR will update their routing tables. Then the data session will flow from P-MAAR to new S-MAAR and finally to the mobile node.

4.2. Advantage of DMM architecture with SDN

SDN which has a flexible way to set up data flow can provide a solution to support efficient route in the DMM architecture. If the mobile node moves to another router, this method can solve the routing optimization problem by modifying flow tables. Besides, the SDN doesn't only allow us to control the data path but also the other kinds of messages between routers.

4.3. Optimization routing

As a Figure2, When mobile node attach new router, the data session Will flow from P-MAAR to new S-MAAR. Even mobile node Move to another router, data path will be formed through the P-MAAR. It will be occur delay and make the non-optimization path. However, In the SDN based DMM, the controller can modify flow table to make the optimization data path.

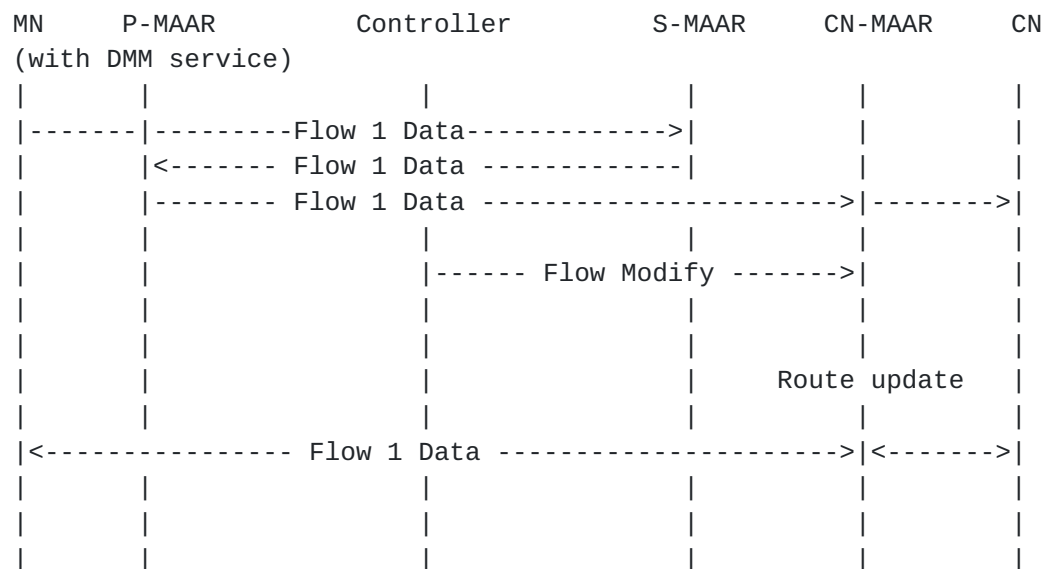


Figure 3.Procedure of path optimization

As a Figure3, After packet redirecting, controller send the flow Modify message to CN-router for routing optimization. Flow modify Message has information that stored flow table between CN-MAAR and S-MAAR. After Receiving Flow modify message, CN-MAAR send packet to S-MAAR directly.

5. Security Considerations

TBD

6. IANA Considerations

This document makes no request of IANA.

7. References

7.1. Normative References

[RFC5213] Gundavelli, S., Leung, K., Devarapalli, V., Chowdhury, K., and B. Patil, "Proxy Mobile IPv6", [RFC 5213](#), August 2008.

[RFC6275] Perkins, C., Johnson, D., and J. Arkko, "Mobility Support in IPv6", [RFC 6275](#), June 2004.

7.2. Informative References

[[draft-bernardos-dmm-pmip](#)]

CJ. Bernardos, A. de la Oliva, F. Giust, "'A PMIPv6-based solution for Distributed Mobility Management'", [draft-bernardos-dmm-pmip-03](#) (work in progress), July 2013.

[SDN 2013]

Sezer, S.; Scott-Hayward, S.; Chouhan, P.K.; Fraser, B.; Lake, D.; Finnegan, J.; Viljoen, N.; Miller, M.; Rao, N., "Are we ready for SDN? Implementation challenges for software-defined networks," Communications Magazine, IEEE, vol.51, no.7, pp.36,43, July 2013.

Authors' Addresses

Hyunsik Yang
Soongsil University
369, Sangdo-ro, Dongjak-gu,
Seoul 156-743, Korea

Email : yangun@dcn.ssu.ac.kr

Younghan Kim
Soongsil University
369, Sangdo-ro, Dongjak-gu,
Seoul 156-743, Korea

Email: younghak@ssu.ac.kr