

# **captive portals**

IETF 100, Singapore

# Note Well

Any submission to the IETF intended by the Contributor for publication as all or part of an IETF Internet-Draft or RFC and any statement made within the context of an IETF activity is considered an "IETF Contribution". Such statements include oral statements in IETF sessions, as well as written and electronic communications made at any time or place, which are addressed to:

- The IETF plenary session
- The IESG, or any member thereof on behalf of the IESG
- Any IETF mailing list, including the IETF list itself, any working group or design team list, or any other list functioning under IETF auspices
- Any IETF working group or portion thereof
- Any Birds of a Feather (BOF) session
- The IAB or any member thereof on behalf of the IAB
- The RFC Editor or the Internet-Drafts function

All IETF Contributions are subject to the rules of [RFC 5378](#) and [RFC 8179](#).

Statements made outside of an IETF session, mailing list or other function, that are clearly not intended to be input to an IETF activity, group or function, are not IETF Contributions in the context of this notice. Please consult [RFC 5378](#) and [RFC 8179](#) for details.

A participant in any IETF activity is deemed to accept all IETF rules of process, as documented in Best Current Practices RFCs and IESG Statements.

A participant in any IETF activity acknowledges that written, audio and video records of meetings may be made and may be available to the public.

# Agenda

Administrivia	5	Chairs
Documents, Milestones, and more	20	Chairs
ICMP <a href="#">draft-wkumari-capport-icmp-unreach</a>	45	Kyle Larose
Architecture <a href="#">draft-ietf-capport-architecture</a>	15	Kyle Larose
PvD <a href="#">draft-ietf-intarea-provisioning-domains</a>	15	Tommy Pauly

# Hackathon

## IETF 100 Hackathon

- \* implementation testing and discussions continued

- \* Kyle's local participation summary: [here](#)

- \* Midori & Kir undertook a project remotely

  - slides [here](#)

  - code [here](#)

<https://github.com/capport-wg/wg-materials/tree/master/ietf100>

# Working Group Milestones

Aug 2018

Protocol to discover and interact with a Captive Portal

- \* adopted architecture draft in Prague
- \* RFC 7710 and PvD both still in the mix, but more clarification needed
- \* at a minimum, need to clarify browser and API interaction with:
  - a single URL (RFC 7710), or
  - multiple possible URLs (PvD)

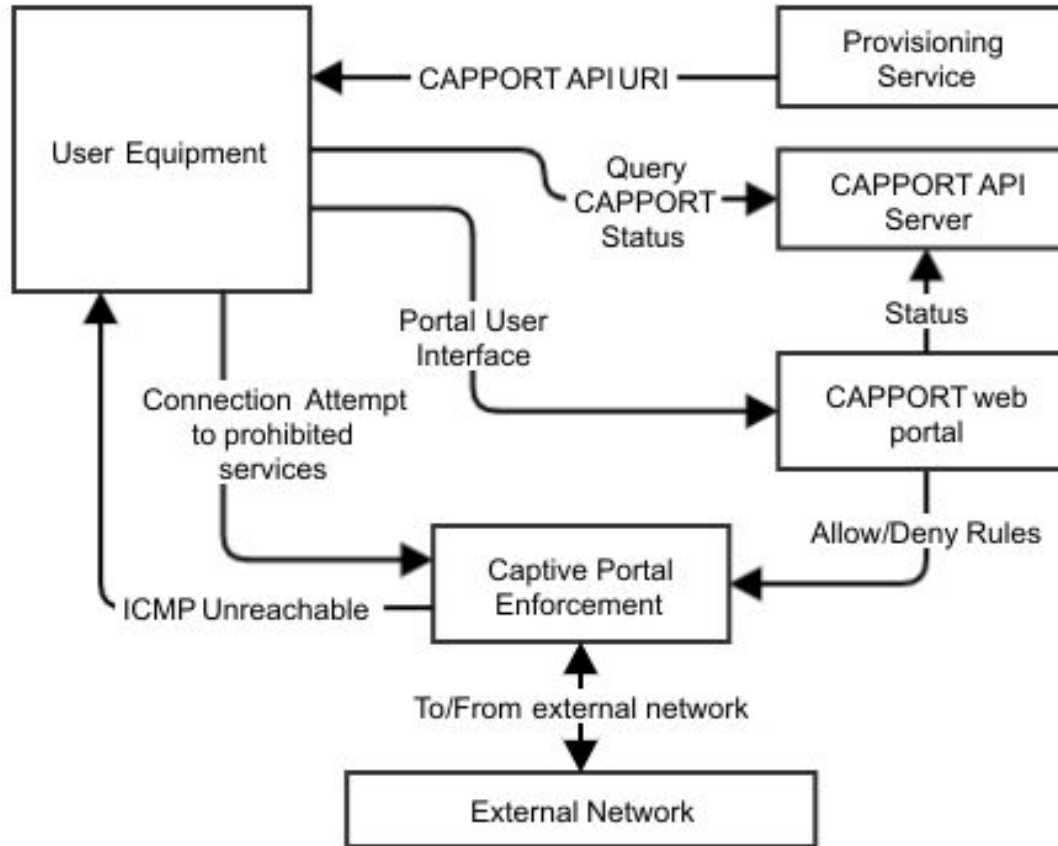
# Working Group Milestones

Aug 2018

API for Captive Portal Interaction

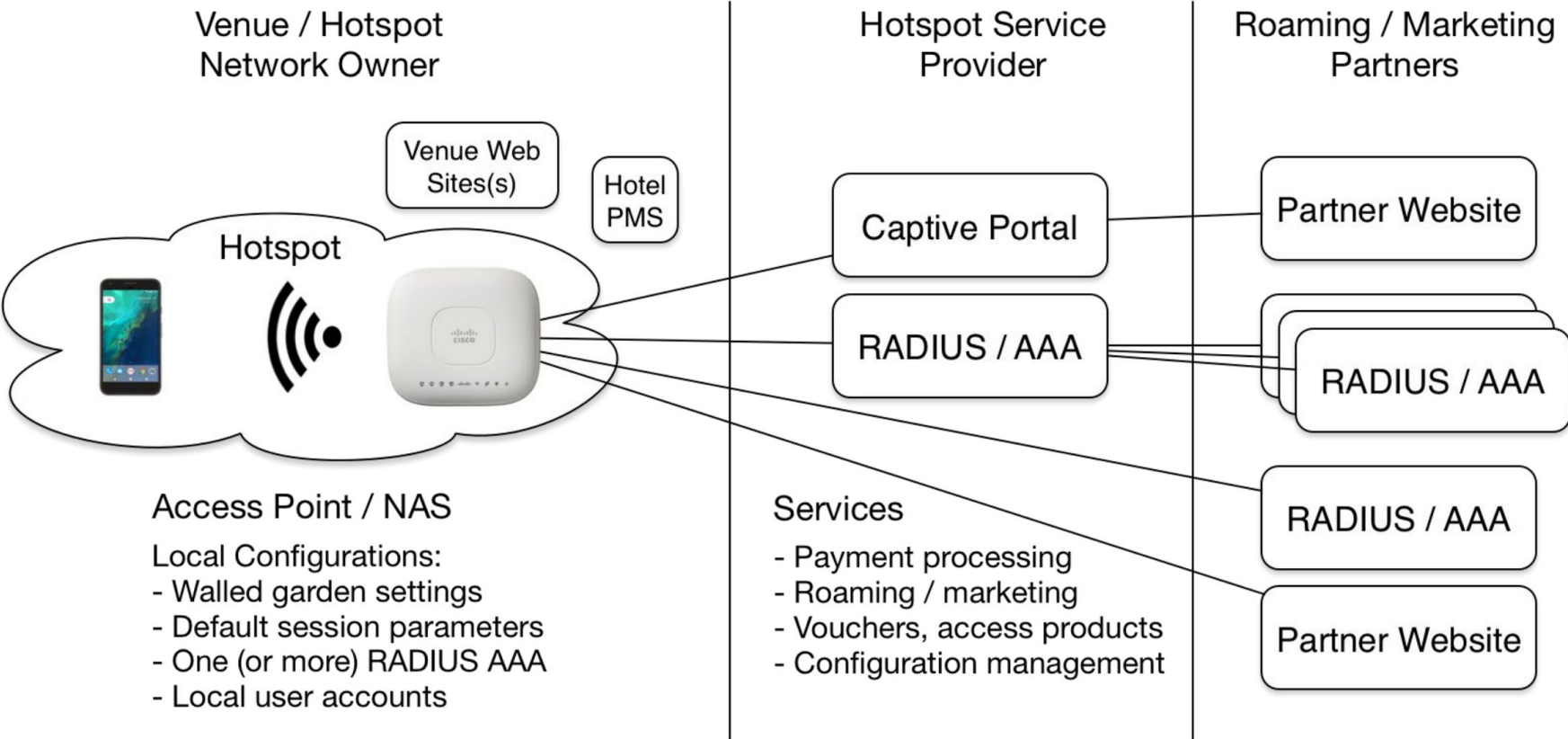
- \* adopted API draft in Prague
- \* no *-ietf-* nor github version yet uploaded
- \* original document authors still available?
- \* Tommy has expressed interest ...

# Architecture diagram

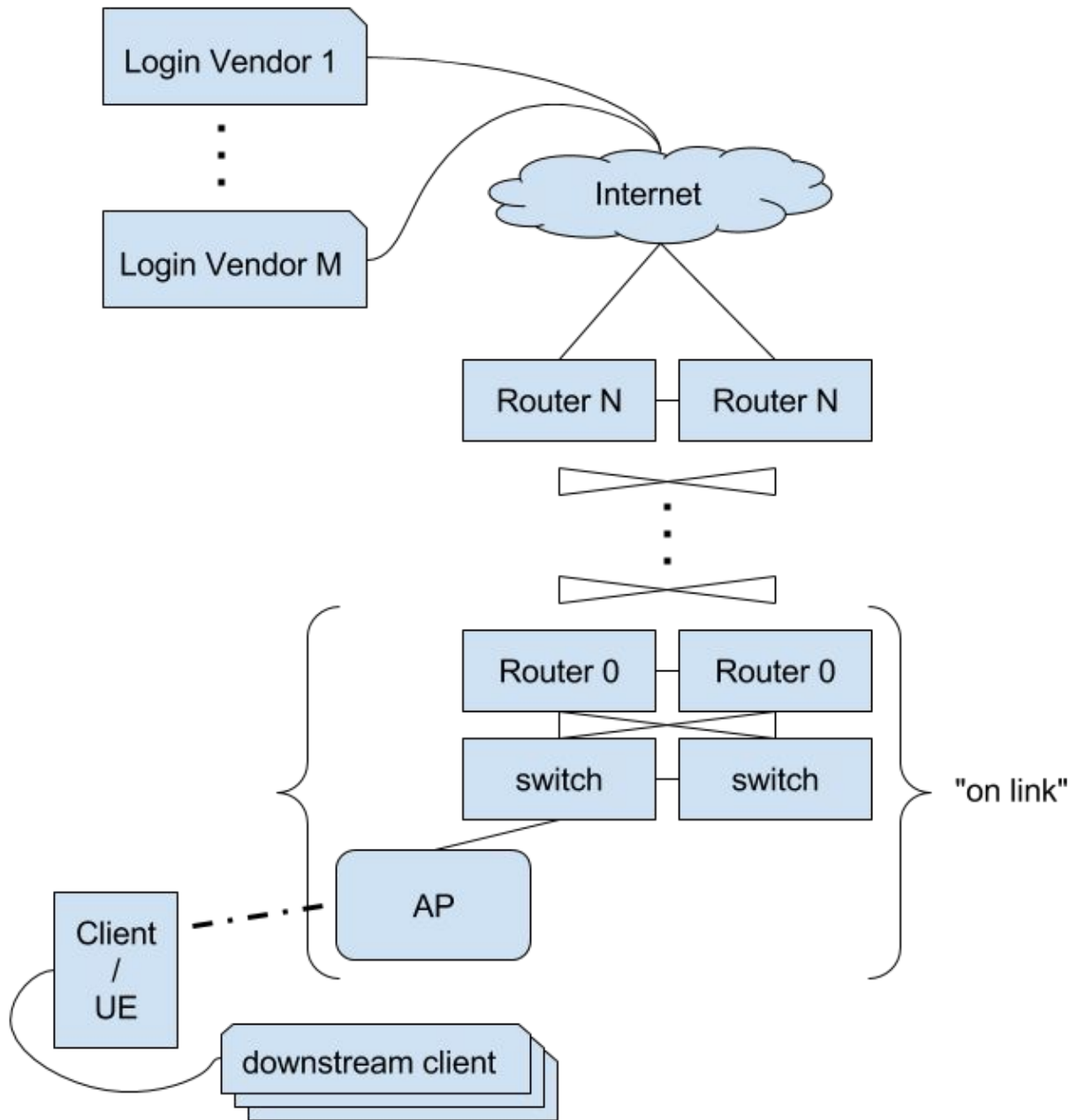


# From IETF 99 ICMP presentation

## Example (overly complicated) Hotspot







Consider location of:

1. the enforcement point?
2. the API endpoint?
3. initial web endpoint?

Architecture scope decisions affect recommendations about:

1. UE identifying tokens
2. DHCPv4/PvD deployment guidelines