
Path Aware Networking proposed RG

Brian Trammell and Jen Linkova, Chairs
Thursday 16 November 2017 – IETF 100 Singapore

Note Well

The [IRTF](#) follows the [IETF](#) Intellectual Property Rights ([IPR](#)) disclosure rules. This is a summary of these rules as they relate to [IRTF](#) research group discussions, mailing lists and Internet Drafts:

- If you include your own or your employer's [IPR](#) in a contribution to an [IRTF](#) research group, then you must file an [IPR](#) disclosure with the [IETF](#).
- If you recognize your own or your employer's [IPR](#) in someone else's contribution and you are participating in the discussions in the research group relating to that contribution, then you must file an [IPR](#) disclosure with the [IETF](#). Even if you are not participating in the discussion, the [IRTF](#) still requests that you file an [IPR](#) disclosure with the [IETF](#).
- Finally, the [IRTF](#) requests that you file an [IPR](#) disclosure with the [IETF](#) if you recognize [IPR](#) owned by others in any [IRTF](#) contribution.

The [IRTF](#) expects that you file [IPR](#) disclosures in a timely manner, i.e., in a period measured in days or weeks, not months. The [IRTF](#) prefers that the most liberal licensing terms possible are available for [IRTF](#) Stream documents, see [RFC 5743](#). You may file an [IPR](#) disclosure here:

<https://www.ietf.org/ipr/file-disclosure>

See [RFC 3979](#) (BCP 79) for definitions of "[IPR](#)" and "contribution" and for the detailed rules (substituting "[IRTF](#)" for "[IETF](#)").

Agenda

- Intro / Note Well / Agenda (you are here) 10m, Chairs
 - Path Dissemination 20m, Christos Pappas
 - Interfaces for Path Selection 20m, Laurent Chuat
 - Provisioning Domains 15m, Eric Vyncke
 - ALTO and extensions 5m, Sabine Randriamasy
 - Path awareness for congestion control 5m, Xingwang Zhou
 - Open Questions -> Discussion 30m, Brian Trammell + all
-

Brief review: Why are we here?

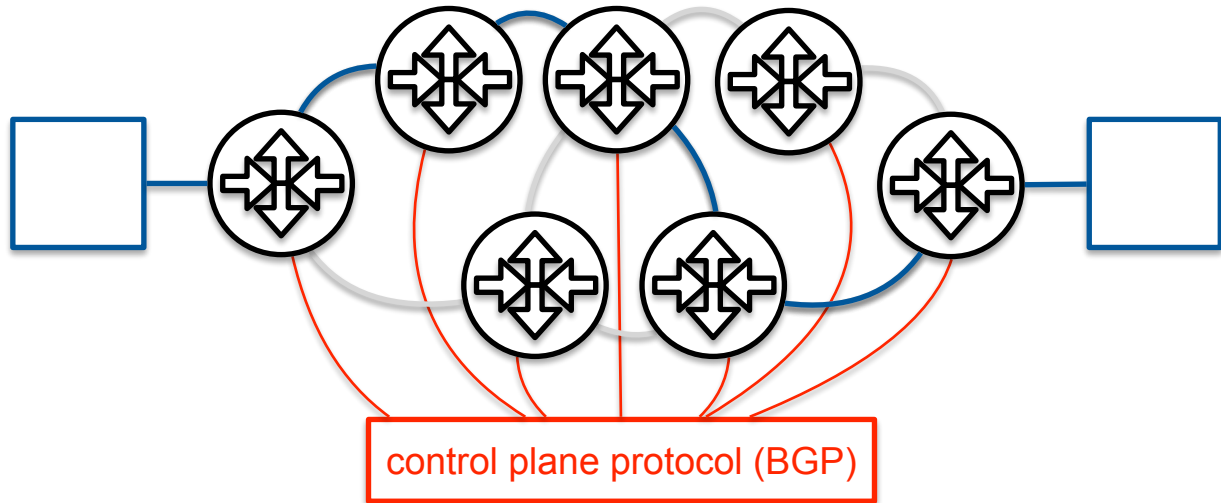
We identified a common theme* of *path awareness* in a lot of research on the edge of standardization in the IETF:

- multipath transport protocols (MPTCP, future QUIC)
- hybrid access approaches (BANANA BoF, MPTCP)
- emerging path control approaches (SFC, SPRING)
- dynamic interface/transport selection (MIF, TAPS)
- work on path signaling (IAB stackevo, PLUS, ALTO)

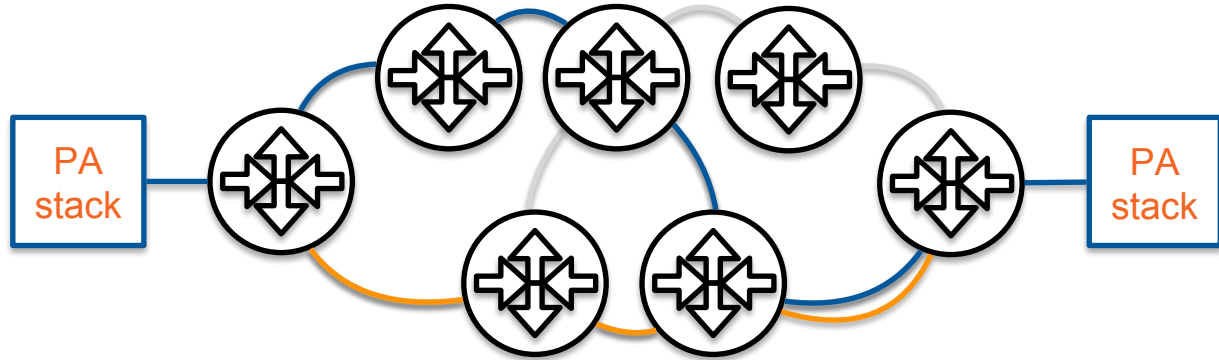
Exploring this theme seems like a job for a new RG.

*please don't feel bad if we missed your favorite path-aware WG

Path Awareness Illustrated



Path Awareness Illustrated



What's so interesting about path aware networking?

In the control plane, of course, all routing is “path aware”.

We're interested in how this extends to the edge*.

- **Endpoint** discovery of paths
- Explicit association of properties to paths by **endpoints**
- Explicit **endpoint** selection of paths

This is happening anyway. We should be explicit about it.

*tunnels have endpoints, too

Documents

draft-trammell-panrg-questions:

- open questions in path aware networking (see later slot)
- looking for co-authors

suggested in Prague:

- catalog of failed transport-layer signaling approaches

other documents?

Workshop

May propose a workshop on path aware networking for SIGCOMM 2018 in Budapest (this would be our fall '18 PANRG meeting)

Call for papers derived from PRG charter

Interested in serving on the TPC?

Deadline *next Thursday*.
