

IPv6-only Terminology Definition

<draft-palet-v6ops-ipv6-only-03>

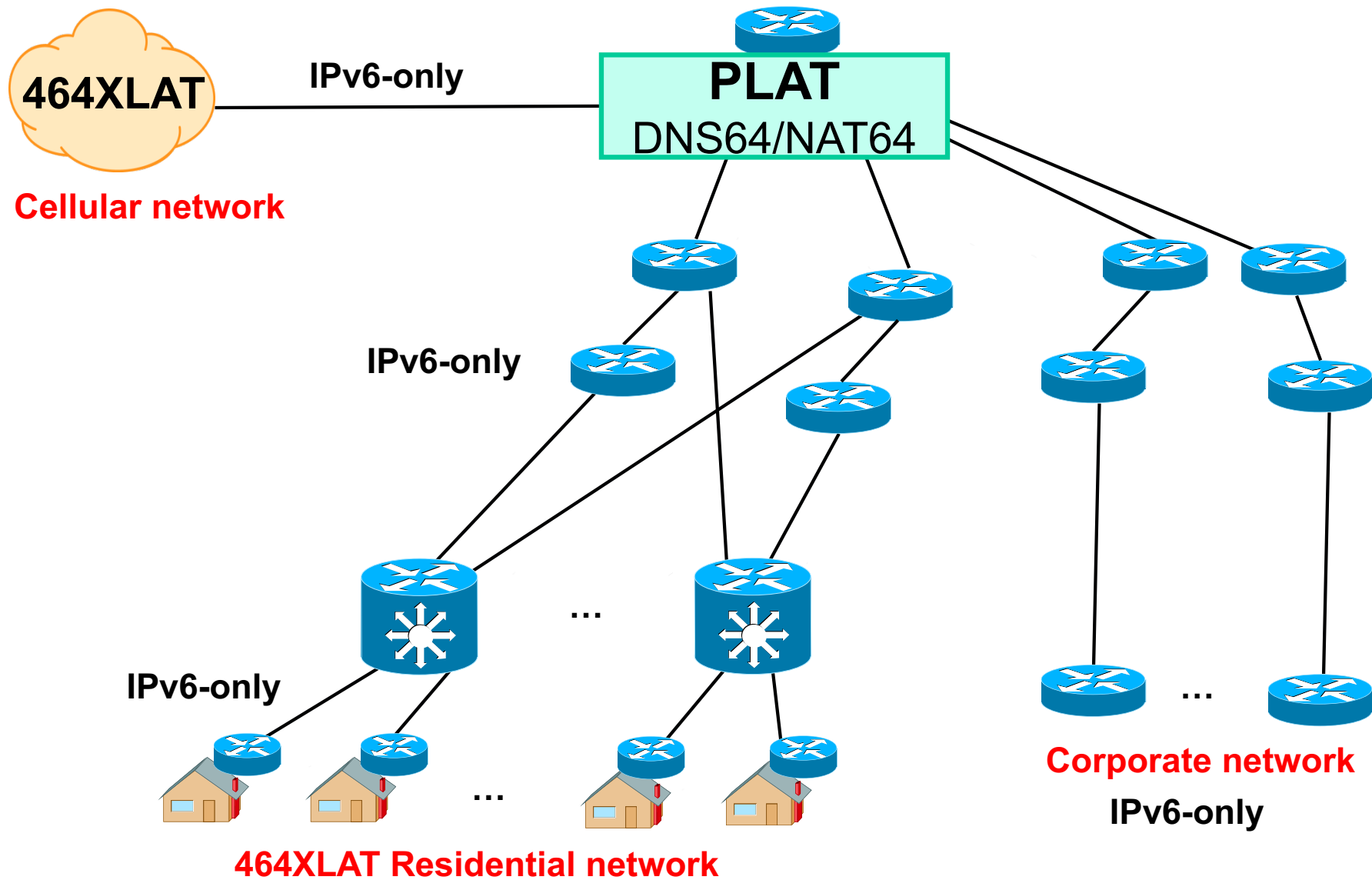
Jordi Palet

jordi.palet@theipv6company.com

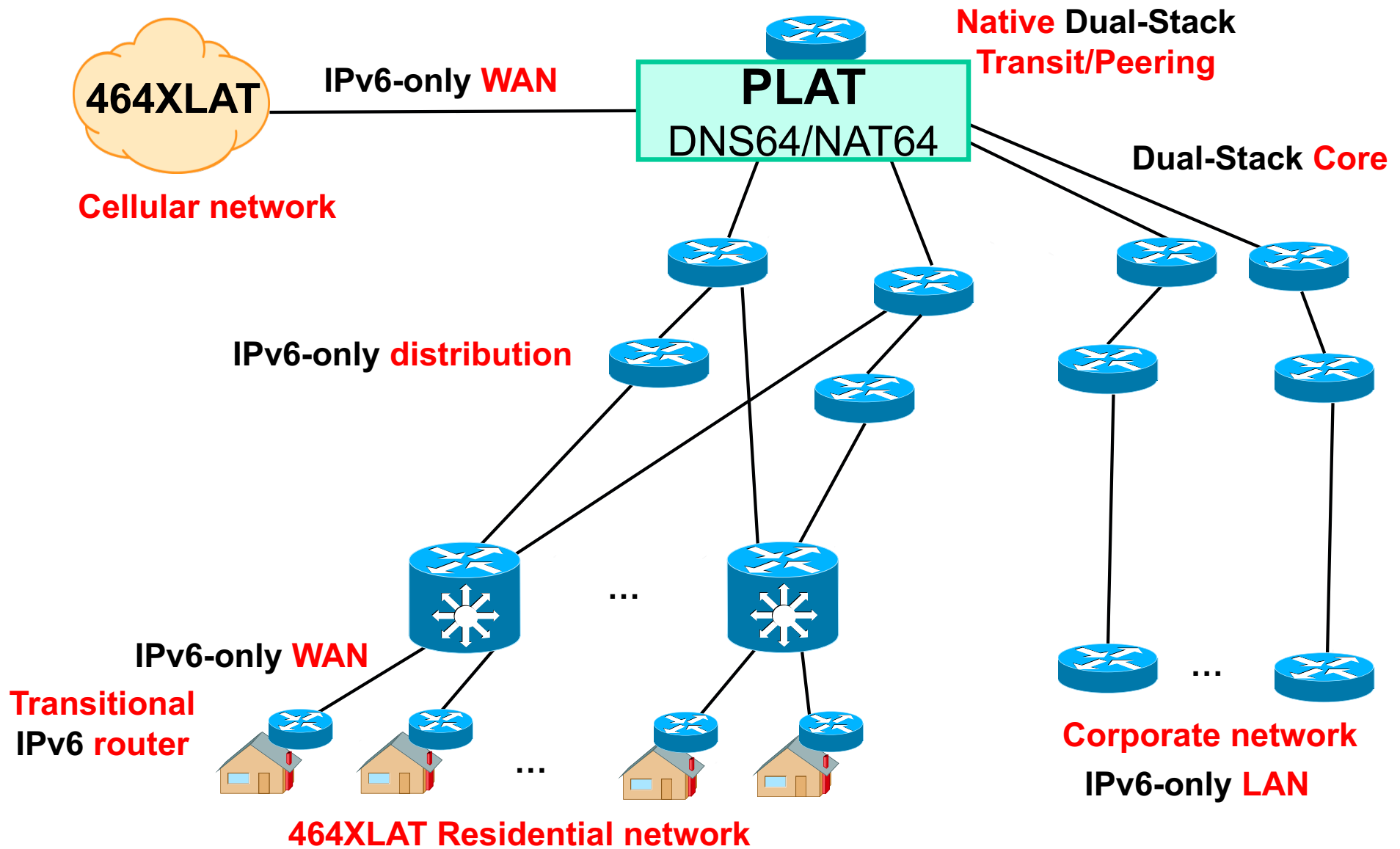
Problem and Goal

- Folks getting confused about “IPv6-only”
- Clarify what we mean “IPv6-only”, so we are all in-sync
- How:
 - Stating that IPv4 is NOT being forwarded “natively”
 - State the “scope”, a specific network “part”

Example: IPv6-only network?



Example, in detail



Overall Definition

- “IPv6-only” used exclusively in a given part(s) of a network, depending on if there is actual native forwarding of IPv4, so IPv4 is not configured, neither managed
- In other words:
“where is IPv6 native”

Terms Defined

- Dual-stack
- Native dual-stack
- IPv6-only network
- IPv6-only WAN/access
- IPv6-only LAN
- IPv6-only host/router
- Transitional IPv6 host/router

IPv4-only ?

- I believe is easy to subsume those definitions, as well as many others
- Does it make sense?

Next steps

- Questions ?
- Become a WG item ?
- Inputs ?