

SUIT Liaison statement from ITU-T-SG-17

<https://datatracker.ietf.org/liaison/1598/>

Terminology in previous liaison statement

- 1) “**Device Core**”: stores/uses software/firmware, i.e., the core IoT device itself
- 2) “**Communicator**”: checks software/firmware status of device and initiates update as needed
 - May or may not be on the device itself
- 3) “**Status Tracker**”: tracks update status of devices under its administration
- 4) “**Firmware Server**”: distributes software/firmware packages to devices
 - May or may not be combined with Status Tracker

Terminology in this liaison statement

1. **Author:** An entity that produces software for IoT devices. It could be a company, an organization, a group, or an individual
2. **Firmware Consumer ~~Device Core~~:** An entity that stores and executes firmware on an IoT device
3. **Status Tracker (~~Status Tracker / Communicator~~):** An entity that checks and keeps tabs on the status of IoT devices under its administration and initiate firmware updates
4. **Firmware Server:** An entity that distributes firmware packages

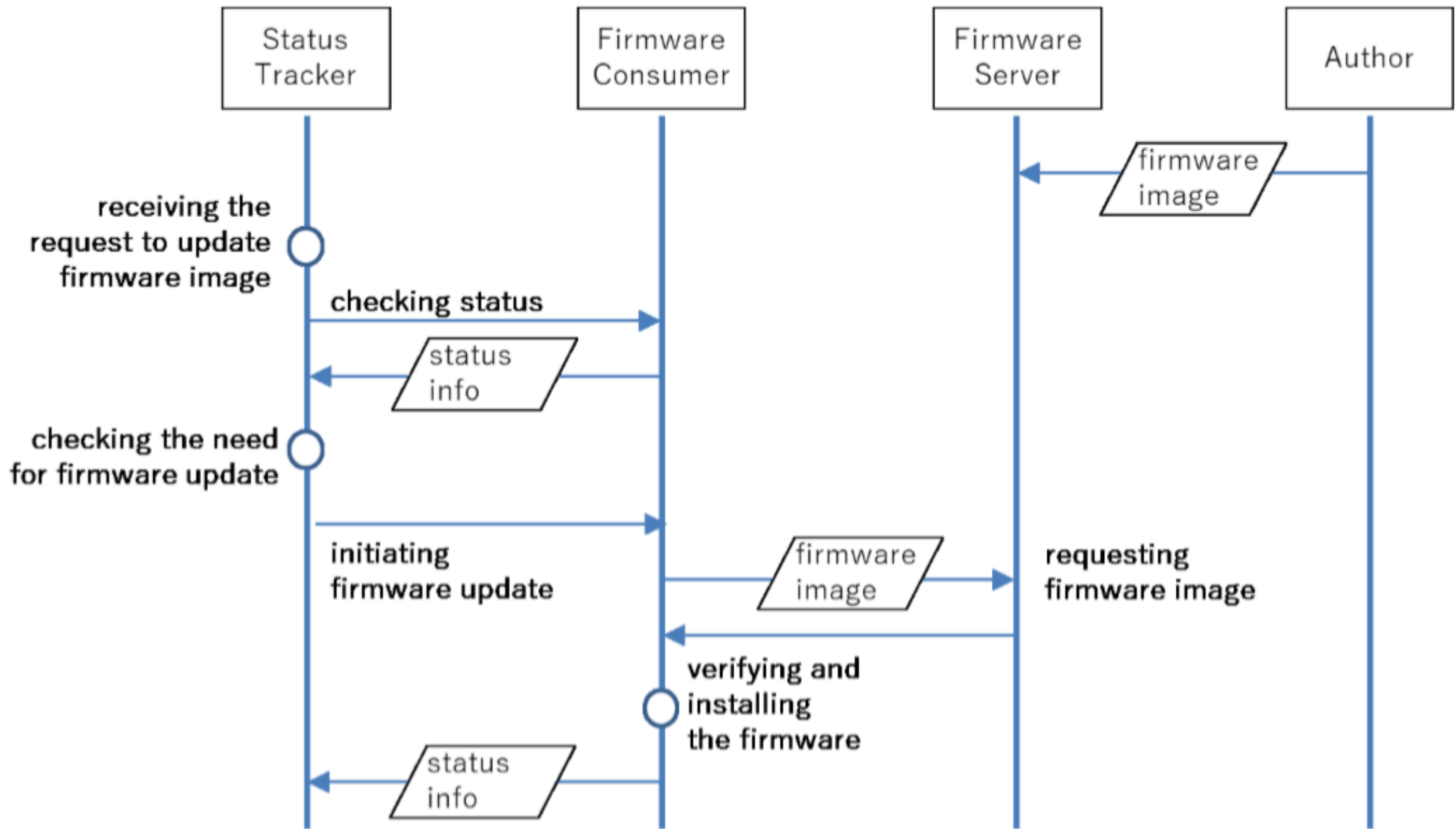


Figure 1 Protocol Procedure

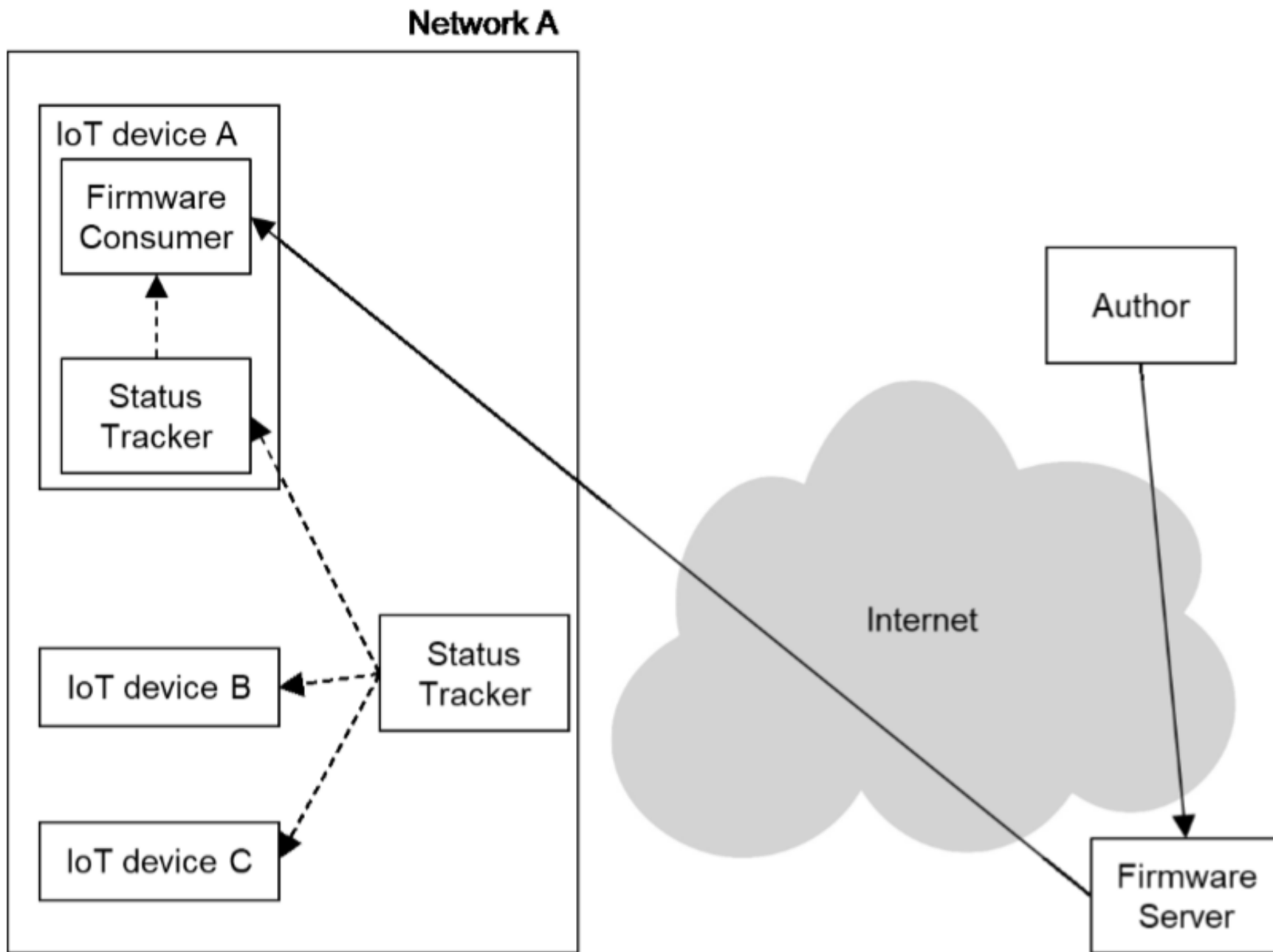


Figure 4 There is a Status Tracker taking care of multiple IoT devices

Doesn't define protocols or formats

- “Note that the IETF SUIT WG is currently working on the format of Manifest and firmware update procedure using the Manifest.”
- Also references IOTSU workshop and oneM2M
- Does define requirements for each role (seems consistent with our architecture)

Questions

1. Should we update our architecture document to be consistent with the SG17 doc?
2. Should we add an Informative reference to the SG17 doc to say they're consistent?
3. Do we need to respond?

“ITU-T Study Group 17 (SG17) thanks IETF SUIT WG for your work on software updates for IoT. SG17 would like to share our ongoing work on draft Recommendation ITU-T X.secup-iot Secure Software Update Procedure for IoT Devices for your consideration.

We look forward to collaboration with you on this work item.”