

# PCE Controlled ID Space

---

draft-li-pce-controlled-id-space-02

Aijun Wang/Cheng Li/Mach Chen/Lizhenbin

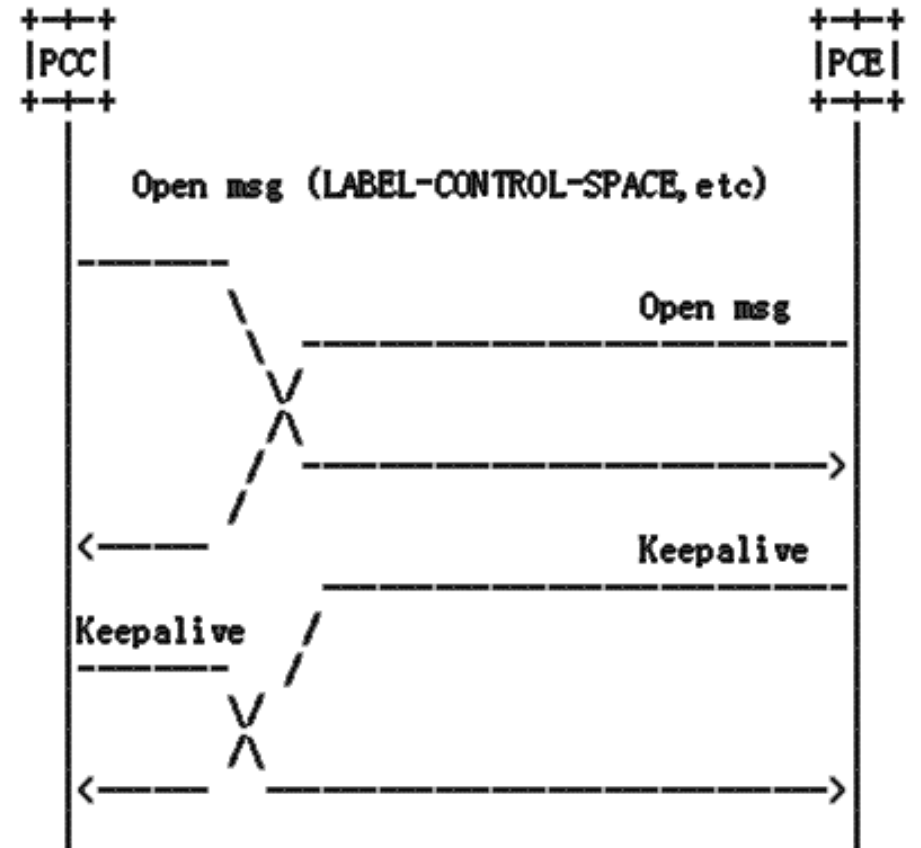
IETF#104

# Motivation

- PCECC
  - [I-D.ietf-pce-pcep-extension-for-pce-controller] specifies the procedures and PCEP protocol extensions for using the PCE as the central controller, where label forwarding entries are downloaded through extending PCEP.
  - [I-D.zhao-pce-pcep-extension-for-pce-controller-sr] specifies the procedures and PCEP protocol extensions for using the PCE as the central controller in SR networks.
  - However, these documents assume that label range to be used by a PCE is known and set on both PCEP peers.
- Other
  - Binding SID allocation
  - Path SID allocation
- In order to allocate ID directly from PCE, PCCs should advertise the PCE controlled ID space to the PCE.

# Introduction

- For delegating ID spaces, related ID Space TLV MUST be included in the Open message.
- Each TLV (corresponding to each ID type) SHOULD be included only once in a Open Message.
- The following ID-CONTROL-SPACE TLVs are defined in this document –
  - LABEL-CONTROL-SPACE
  - SRv6-FUNCT-ID-CONTROL-SPACE TLV



# LABEL-CONTROL-SPACE TLV

- Blocks
  - Start(i) (24 bits): indicates the beginning of the label block (i).
  - Range(i) (24 bits): indicates the range of the label block (i).
- Labels:
  - Such as binding SID and path SID can be allocated directly from the PCE controlled space.
  - PCECC could allocate label for various use-cases

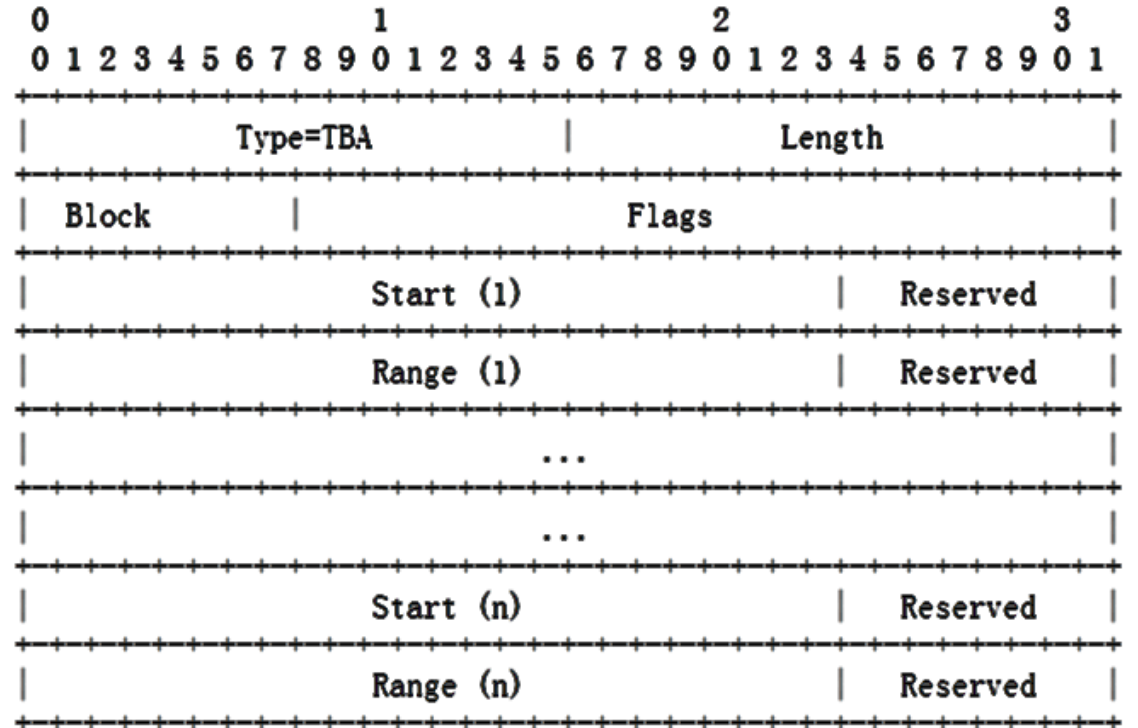
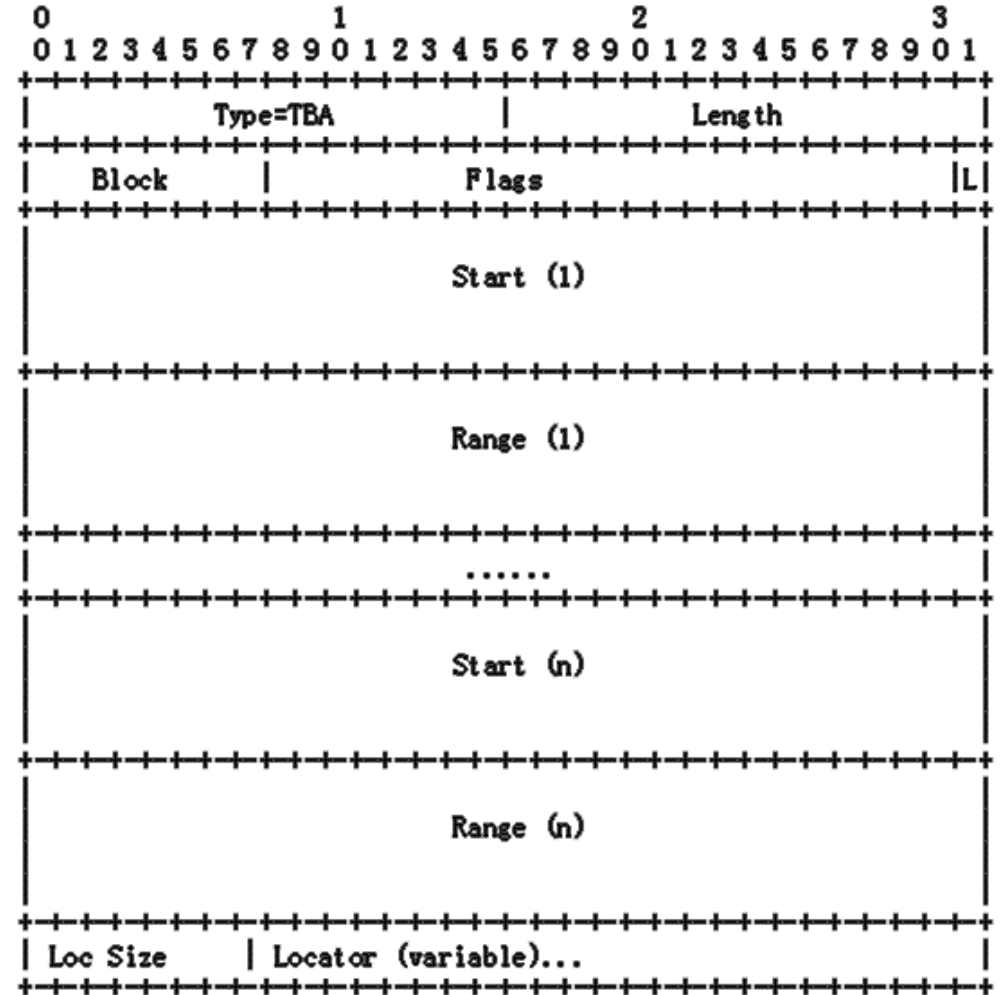


Figure 2: LABEL-CONTROL-SPACE TLV

# SRv6 FUNCT-ID-CONTROL-SPACE TLV

- Flags:
  - L-flag: Locator flag, set when the locator information is included in this TLV. If L-flag is unset, Loc Size and variable Locator field MUST NOT be included in this TLV, and the ID spaces are applicable to all Locators.
- Blocks
  - Start(i) (128 bits): indicates the beginning of the SRv6 Function ID block (i).
  - Range(i) (128 bits): indicates the range of the SRv6 Function ID block (i).
- Locator
  - Identify the locator for these function ID blocks
  - Applicable when a PCC has multiple locators



# Recent Update

- A-Flag: All space flag, set when all the label space is delegated to a PCE.
  - Removed A-Flag since it is useful for PCC to report the full label range anyways
- Adding a new co-author Chao Zhou from Cisco
- Fixed some nits

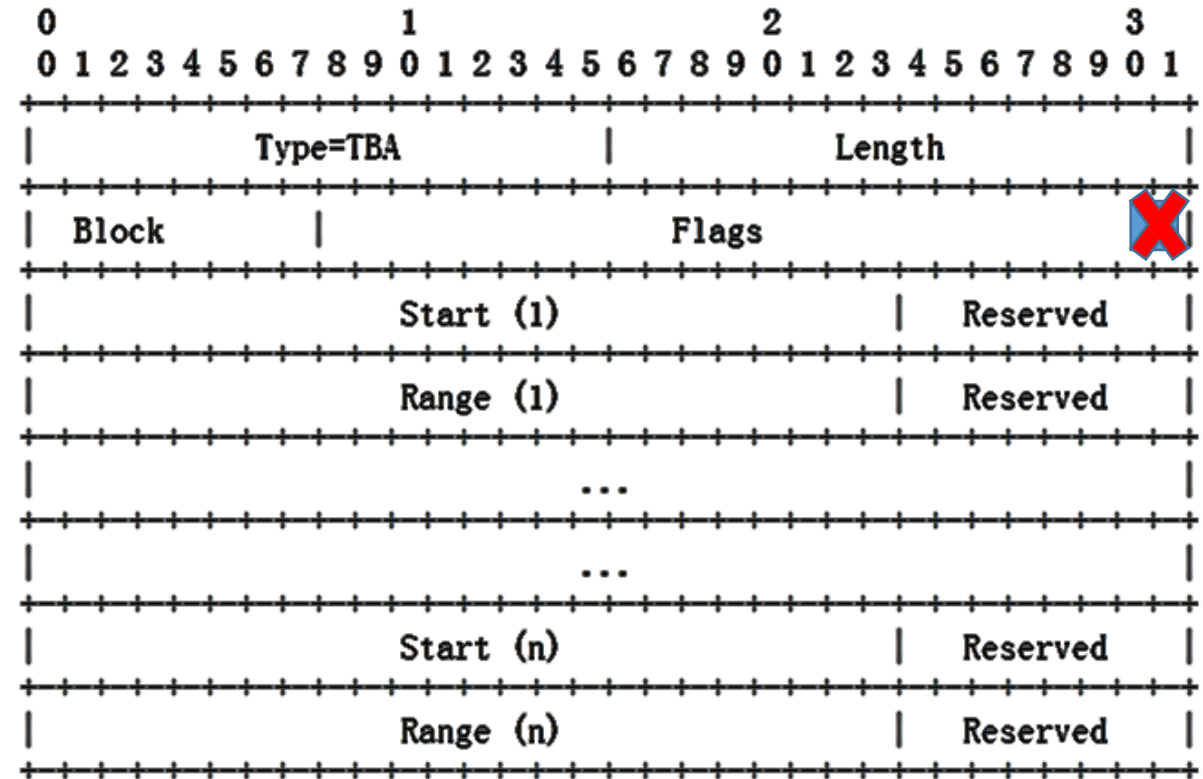


Figure 2: LABEL-CONTROL-SPACE TLV

# Next Plan

- We believe this is a missing function in PCECC and SR
  - And quite useful!
- The content is stable, and ready for WG group adoption.
  - Comments and questions are always welcome!

Thank you