

# Enhanced Beacon

Metrics and Values  
IETF105 - Montreal

Diego Dujovne

[Diego.dijovne@mail.udp.cl](mailto:Diego.dijovne@mail.udp.cl)

Michael Richardson

[mcr+ietf@sandelman.ca](mailto:mcr+ietf@sandelman.ca)

[https://www.sandelman.ca/SSW/ietf/meeting/ietf105/ietf105\\_6tisch\\_enhanced\\_beacon\\_info.pdf](https://www.sandelman.ca/SSW/ietf/meeting/ietf105/ietf105_6tisch_enhanced_beacon_info.pdf)

# Overview

- What's the problem?
- What is proposed.
- Discussion and Questions.

# What's the problem? Network Selection



- A (new!) device (pledge!) will not know which network it should enroll in.
- A single network will be visible multiple times.

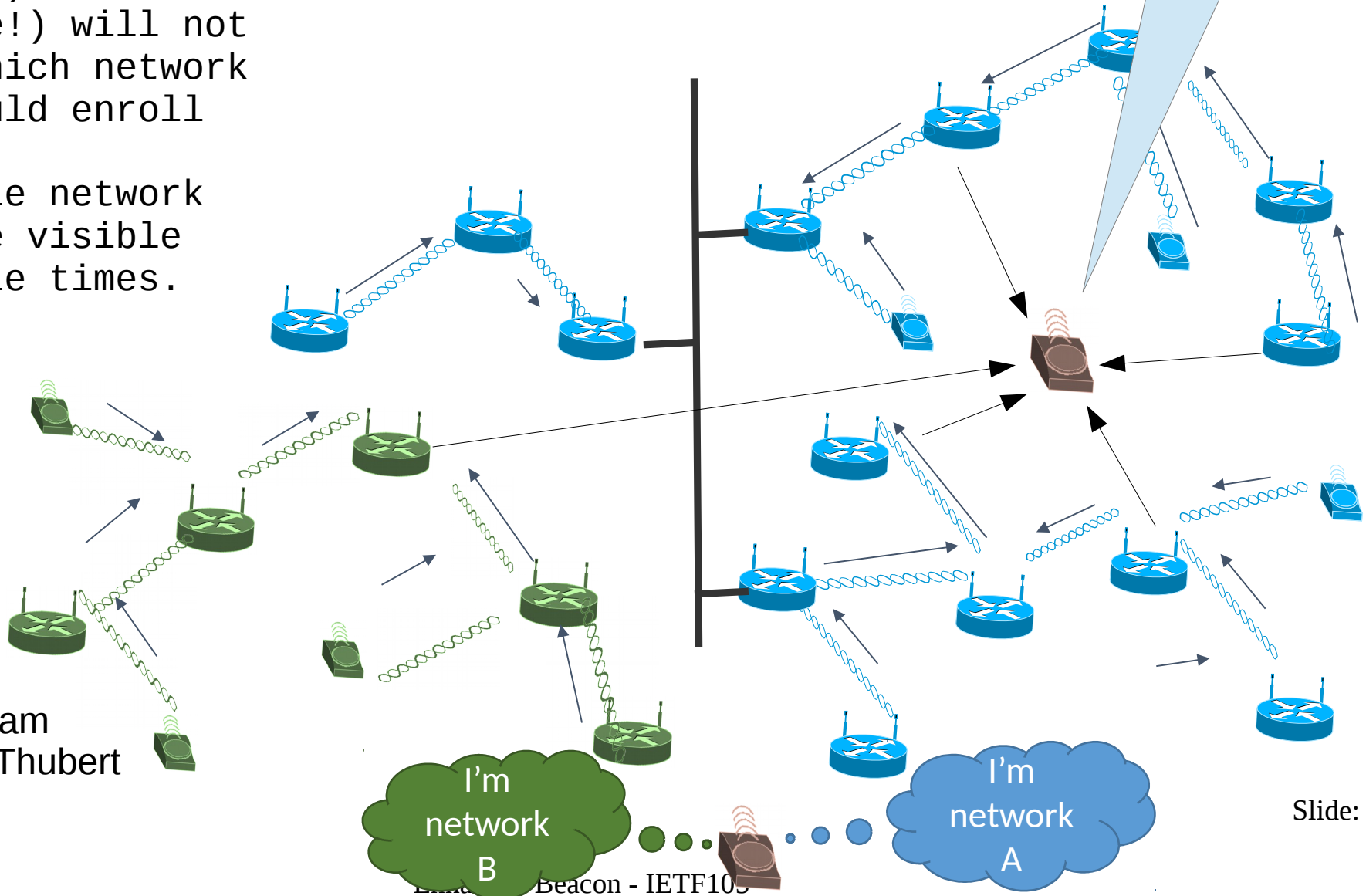
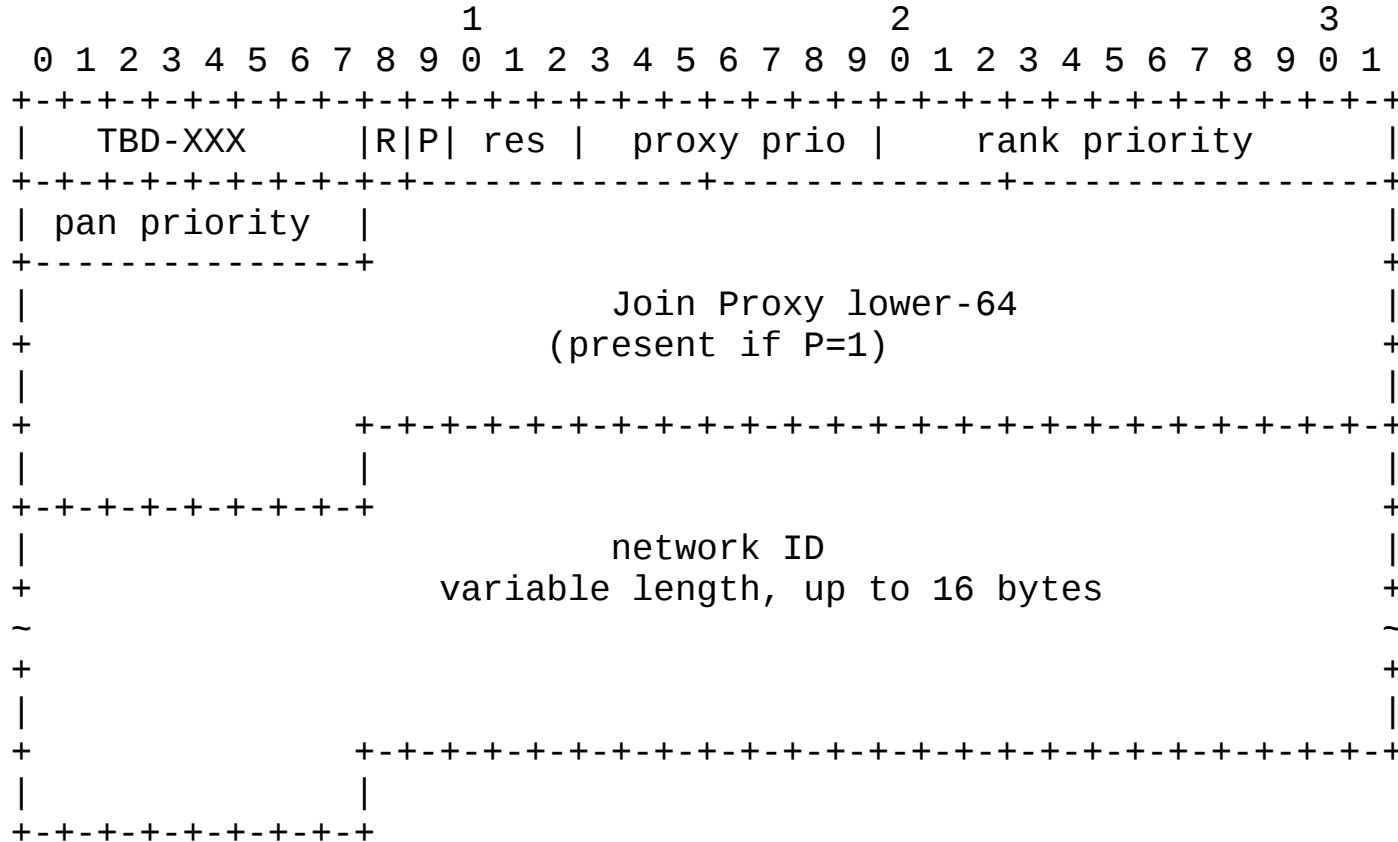


Diagram  
By P.Thubert

# What's the 6tisch part?

IEEE802.15.4 Informational Element encapsulation of 6tisch Join and Enrollment Information  
draft-6tisch-enrollment-enhanced-beacon-02

Creates a new 802.15.4 **Informational Element**, using the IETF allocation in [rfc8137](#)



- R a flag to indicate device will answer unicast Router Solicitations
- Network ID is variable length nonce, probably derived from PIO.
- DODAG Priority: how desirable is this **network** (identified by NetworkID)
- Proxy prio: how desirable is this **proxy within**
- Rank Priority: already part of another IE
- Pan Priority: relative priority of this LLN with the same Network ID

# Questions/Discussion

Ready for WGLC!

?