

EAP method based on EDHOC Authentication

draft-ingles-eap-edhoc-00

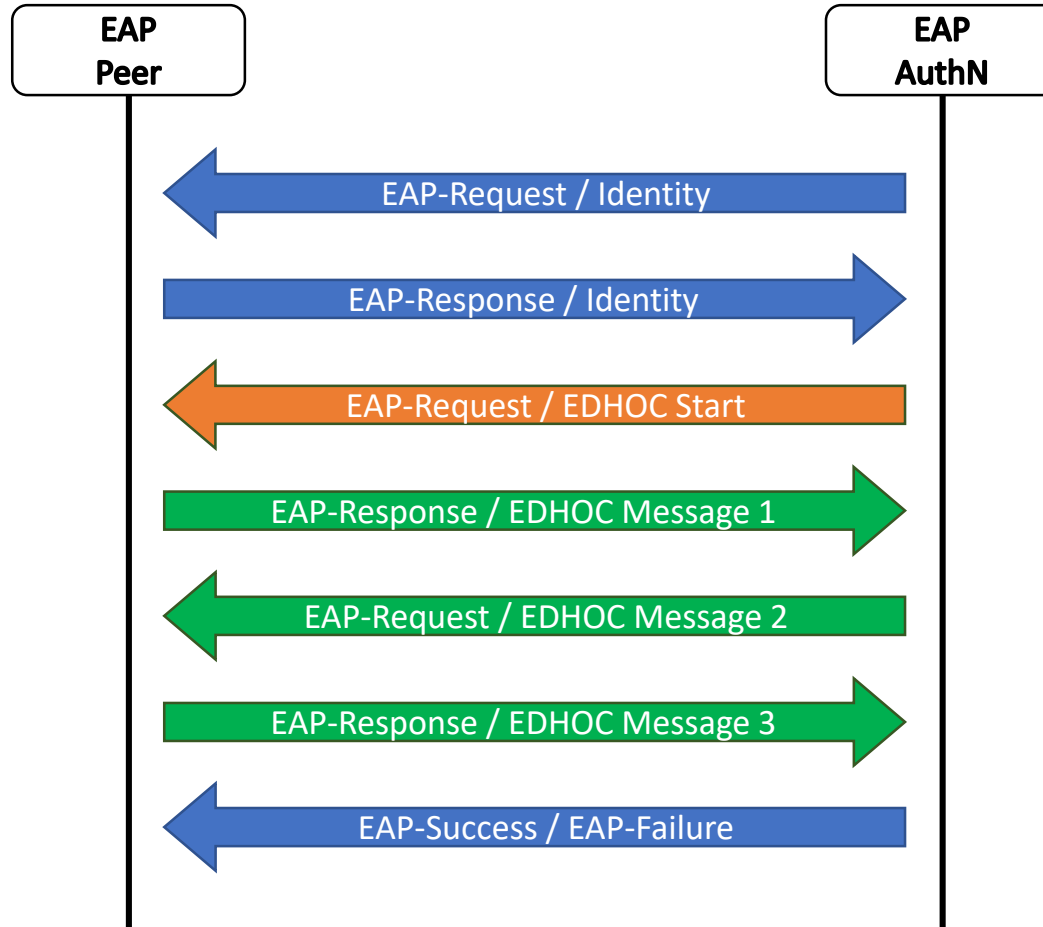
Eduardo Ingles / Dan Garcia / Rafael Marin

109th IETF EMU WG

Connecting IoT devices with EAP

- Goals
 - Alternative EAP solution for IoT appliances
 - Take advantage of CoAP-based protocols
 - End-to-end security
 - Lightweight solution by design
 - EDHOC: Ephemeral Diffie-Hellman Over COSE
 - Lightweight Authenticated Key Exchange
- LAKE WG: <https://datatracker.ietf.org/wg/lake/>

Message Exchange



Transport & message correlation

- Lock-step procedure in EAP
- EAP manages message correlation

$\text{METHOD_CORR} = 4 * \text{method} + \text{corr}$

Where:

$\text{corr} = 3$

Ongoing work

- Present the idea to the community
- Extend the writing of draft sections
- Detail the composition of EAP-EDHOC messages 1 to 3
- Complement the solution presented in [draft-ingles-radex-radius-edhoc-00](#)

Question

- Does it make sense as a WG item?