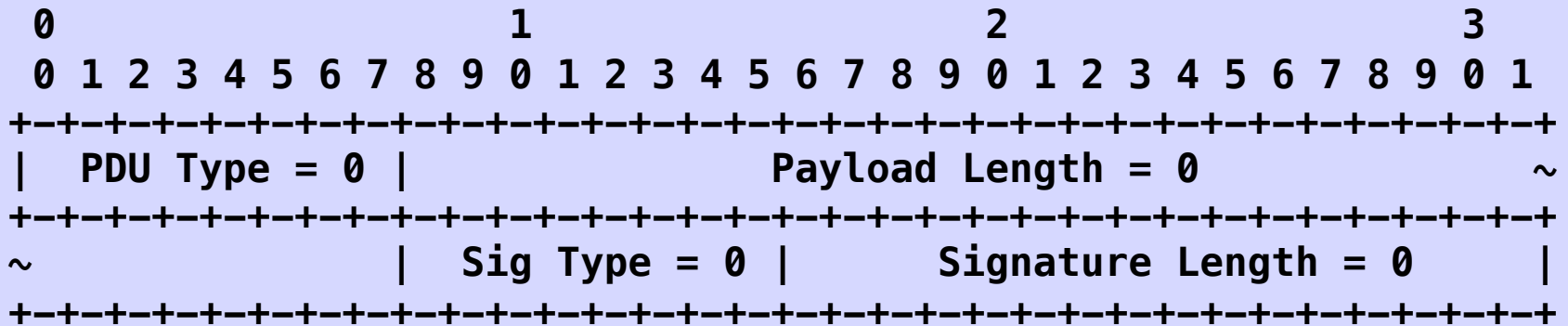


# HELLO Storm Issue

LSVR 2021.03.09

thanks to  
Sue Hares

# Multicast HELLO PDU



01-80-C2-00-00-0E: Nearest Bridge = Propagation constrained to a single physical link; stopped by all types of bridges (including MPRs (media converters)). This SHOULD BE used when the link is known to be a simple point to point link.

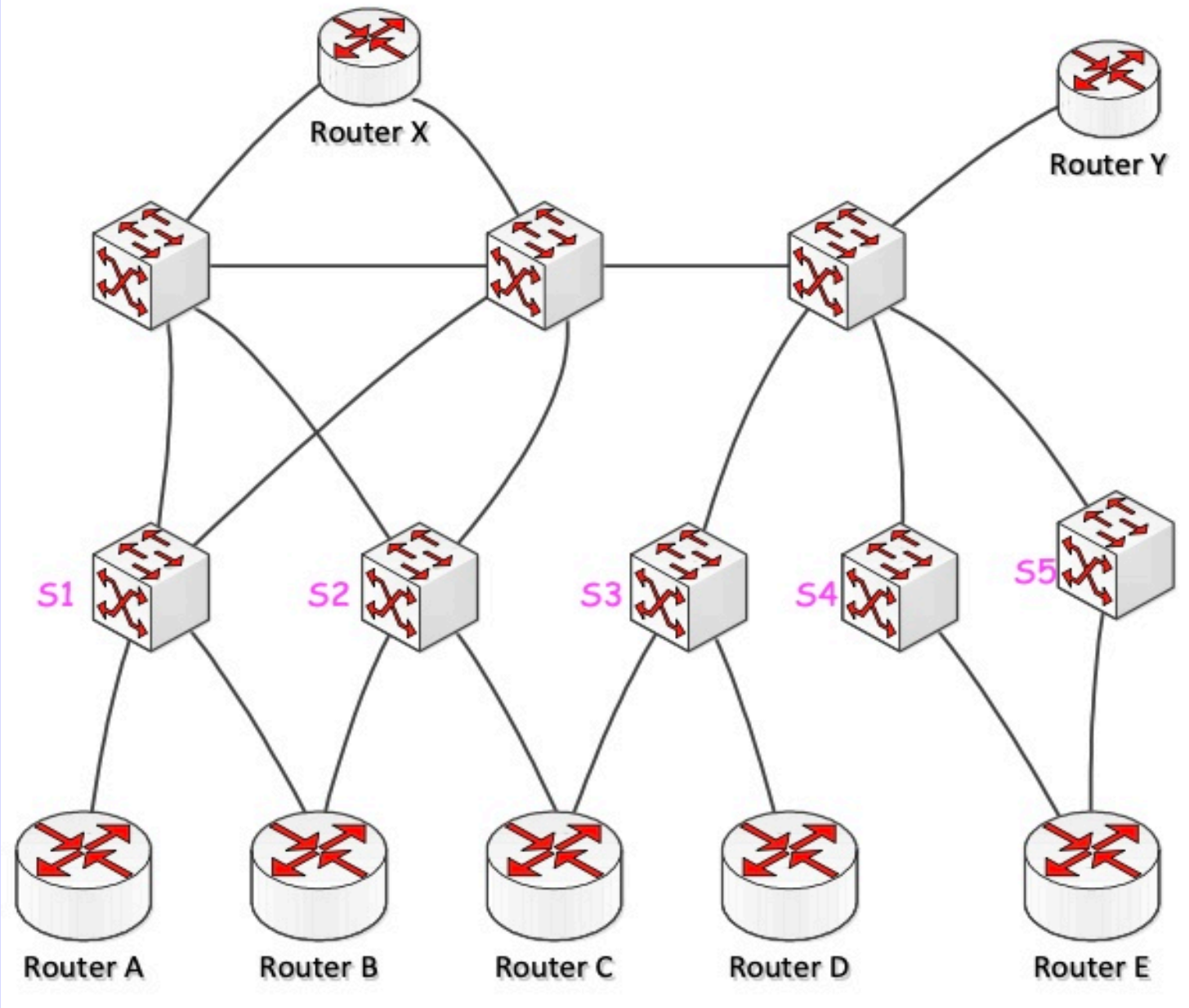
TBA: When a switch receives a frame with a multicast destination MAC it does not recognize, it forwards to all ports. This destination MAC is to be sent when the interface is known to be connected to a switch. This SHOULD BE used when the link may be a multi-point link.

# Furthermore § 11

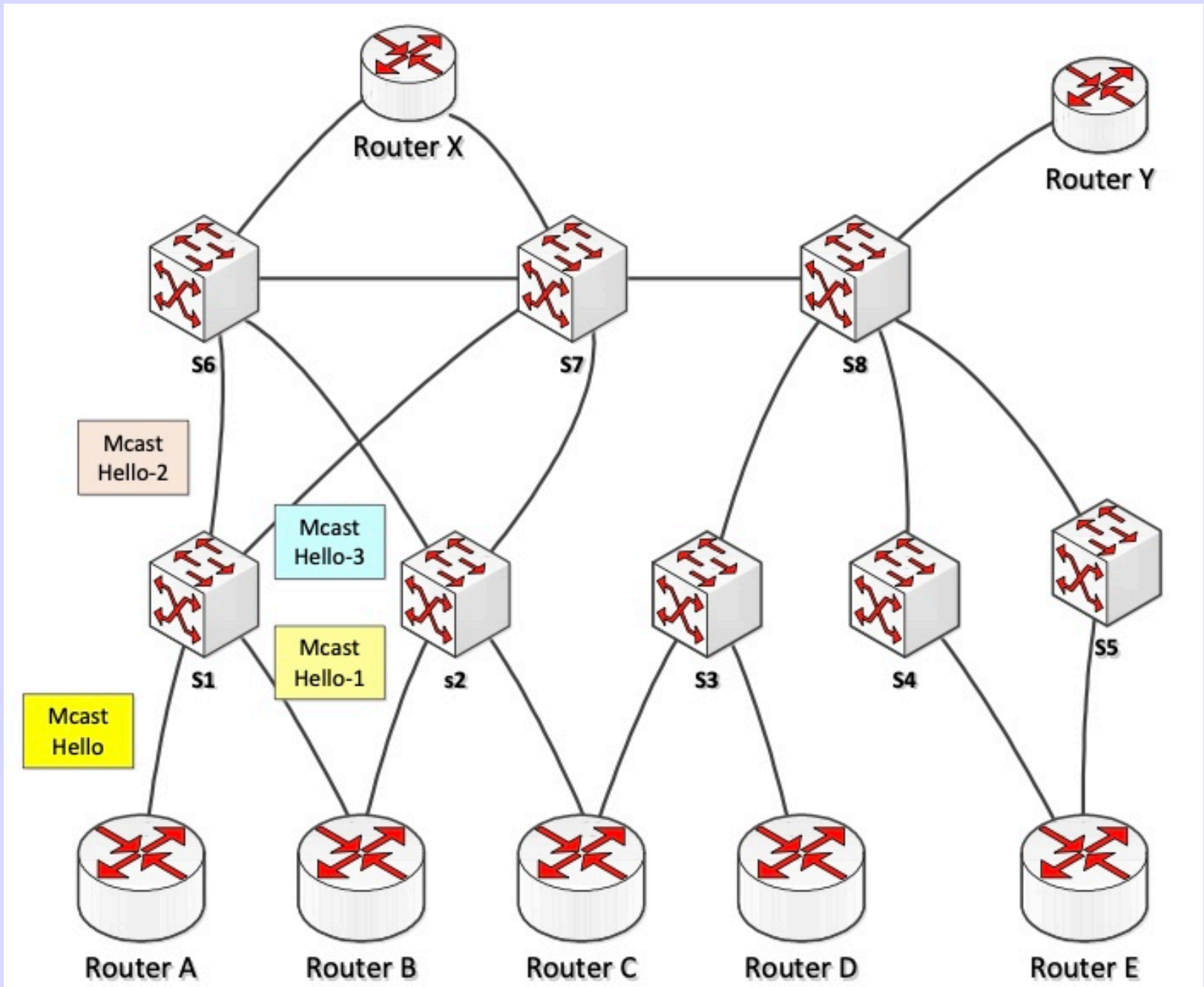
If the configured destination address is one that is propagated by switches, the **HELLO SHOULD** be repeated at a configured interval, with a default of 60 seconds. This allows discovery by new devices which come up on the layer-2 mesh. In this multi-link scenario, the operator should be aware of the trade-off between timer tuning and network noise and adjust the inter-HELLO timer accordingly.

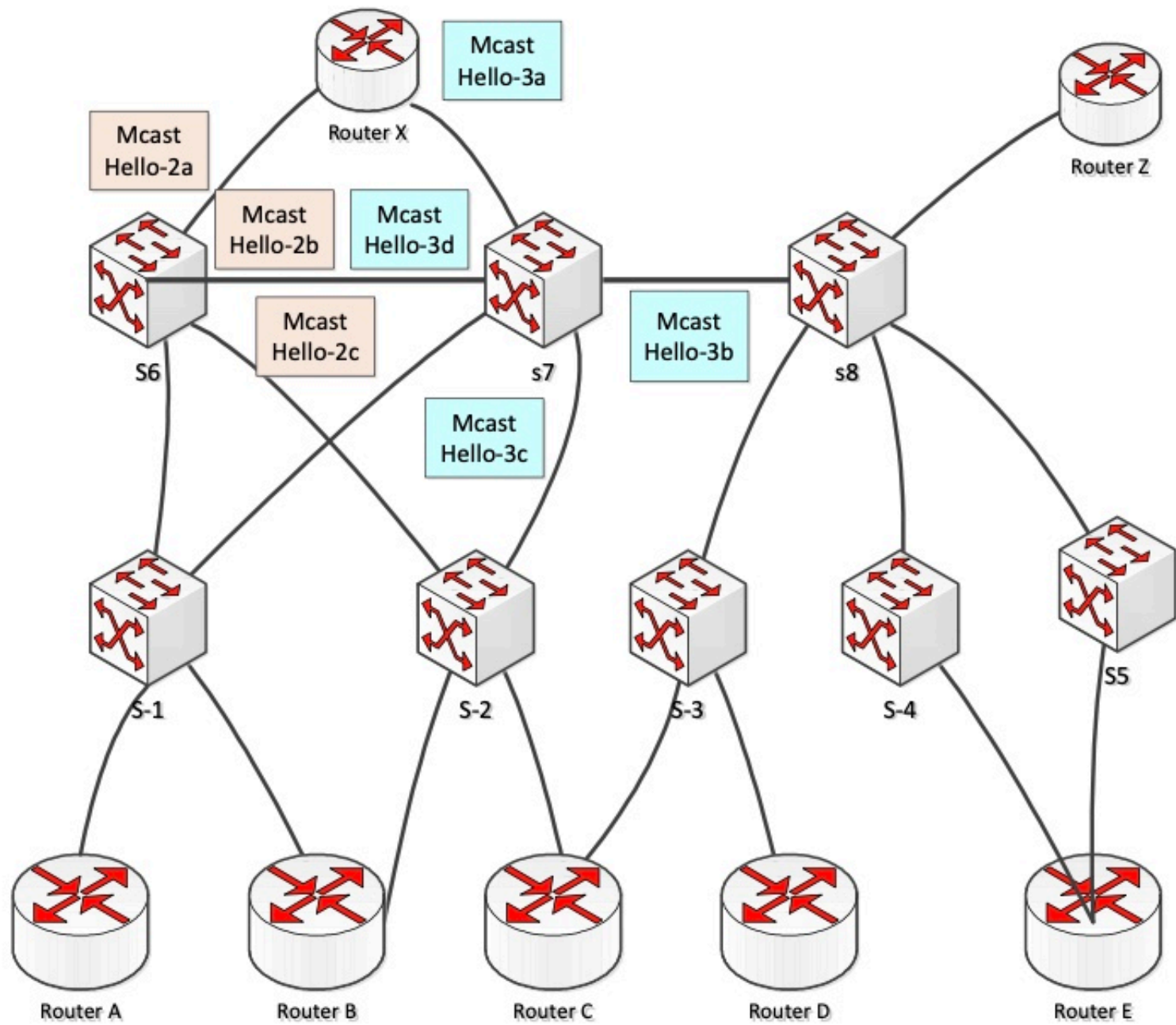
Sue Hares  
Raised  
a Possible  
Problem

And I Stole  
Her Artwork

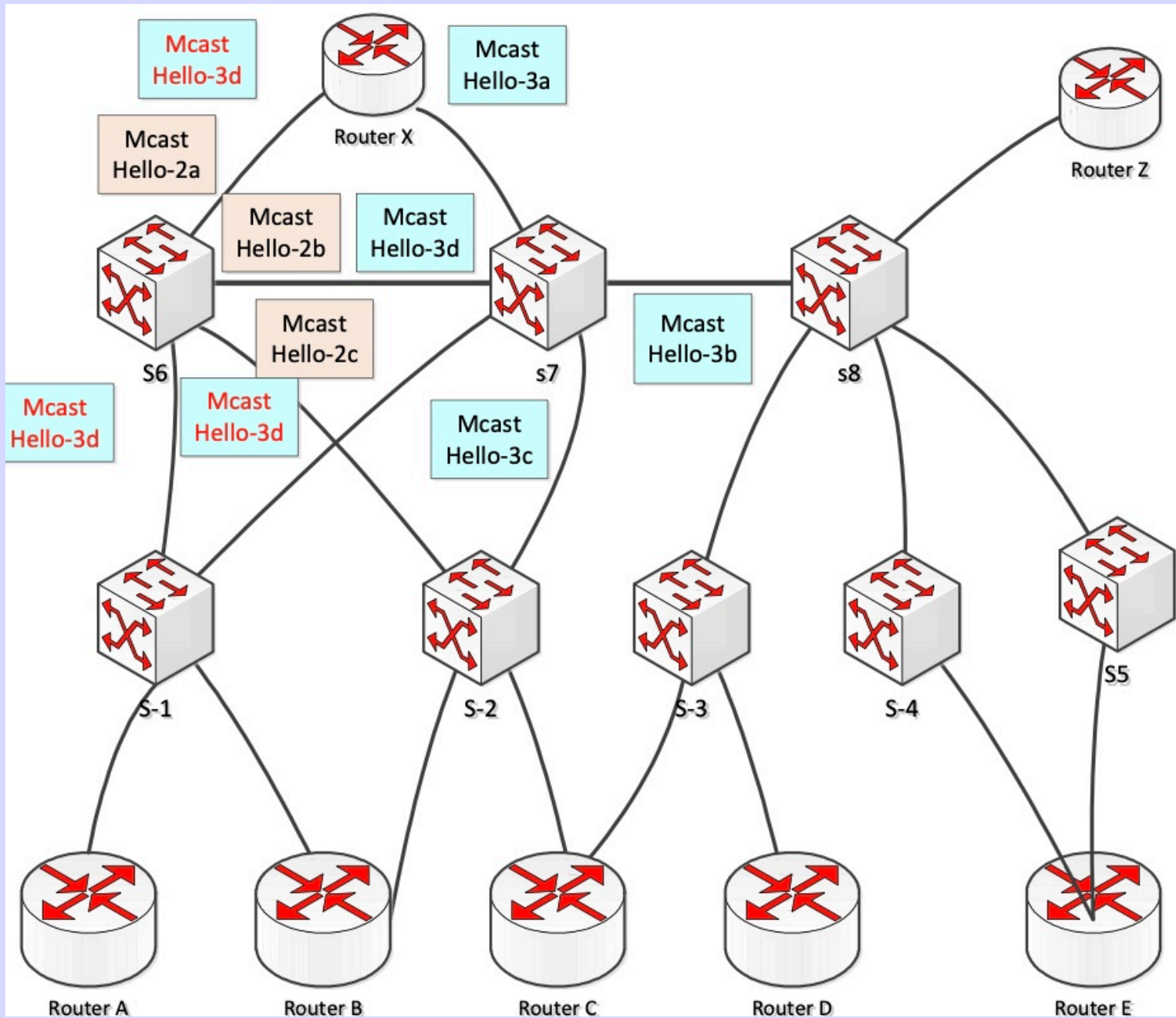


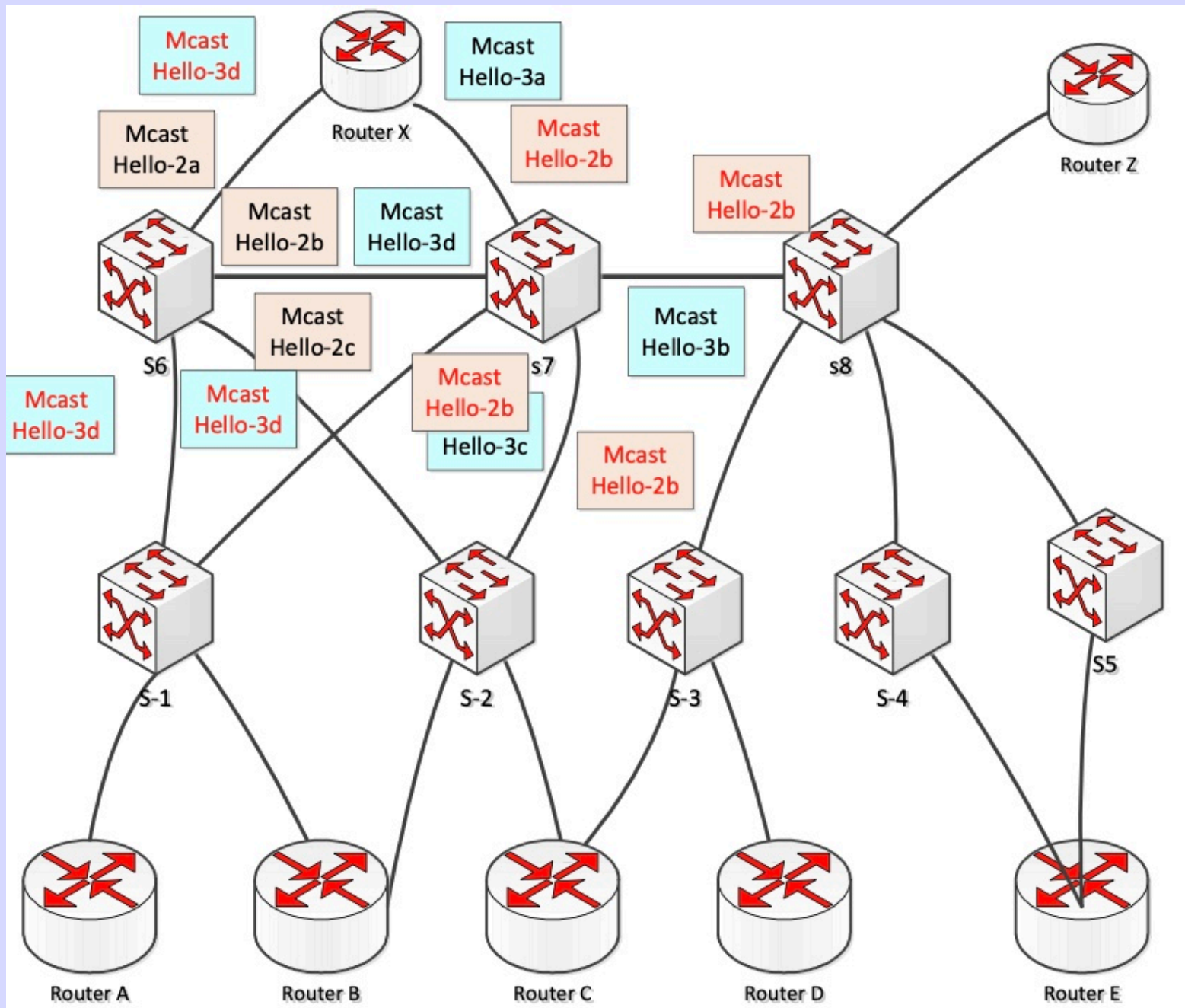
Only the Routers are L3DL Speakers



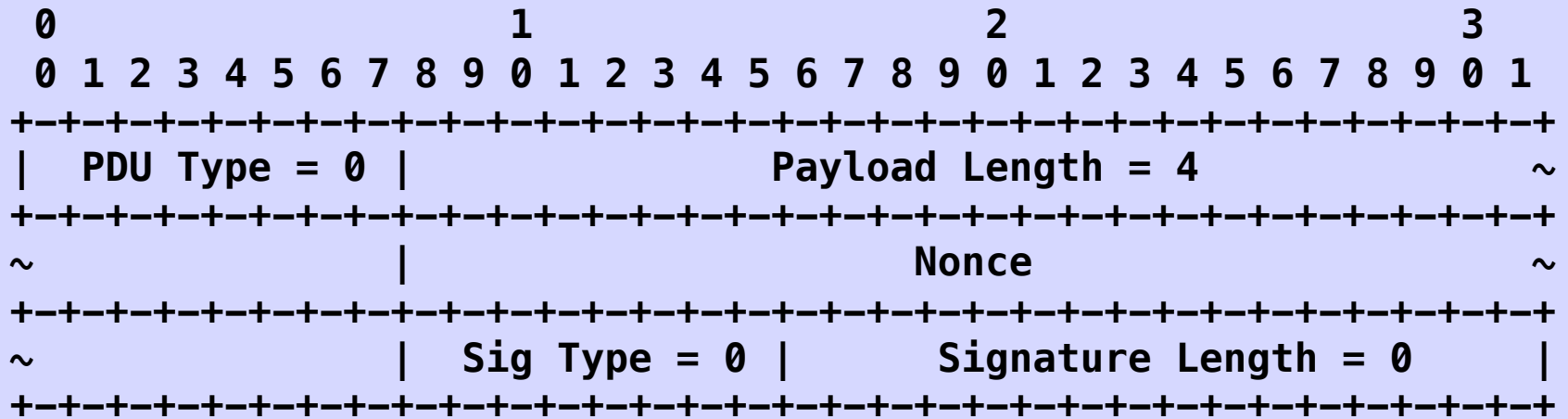








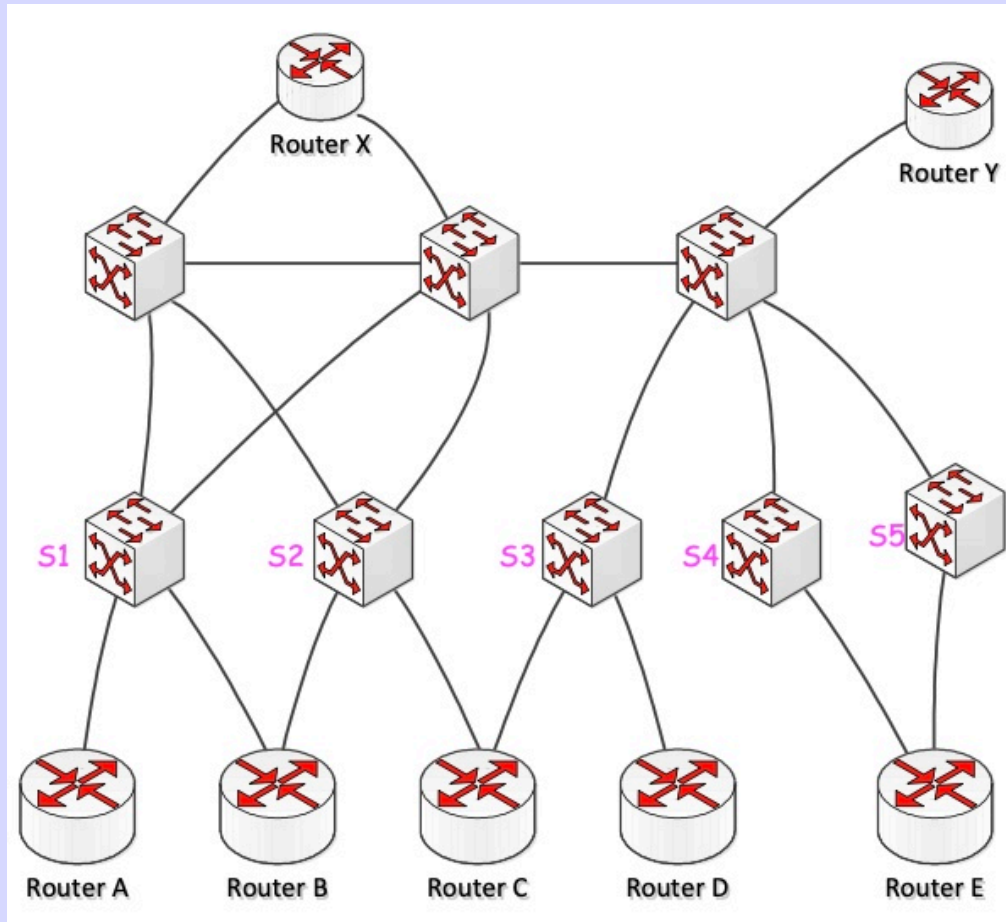
# Add a Nonce?



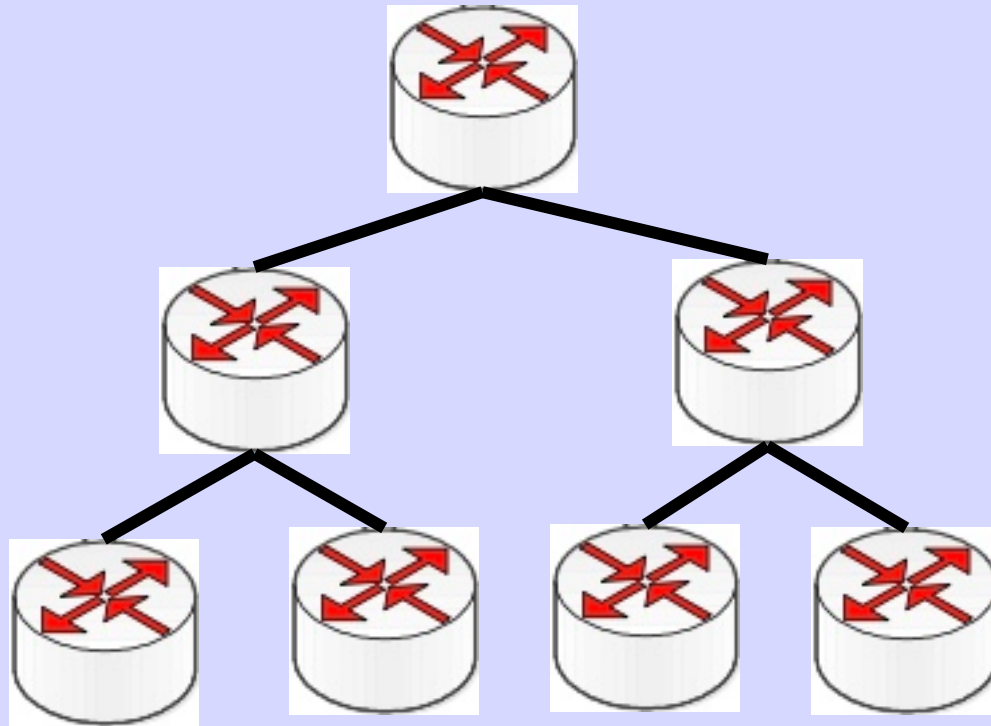
Nice Try But

The PDU and the nonce would not be recognized by the non-L3DL speakers, and hence the storm would propagate

# But I do not think this is the LSVR/L3DL Model

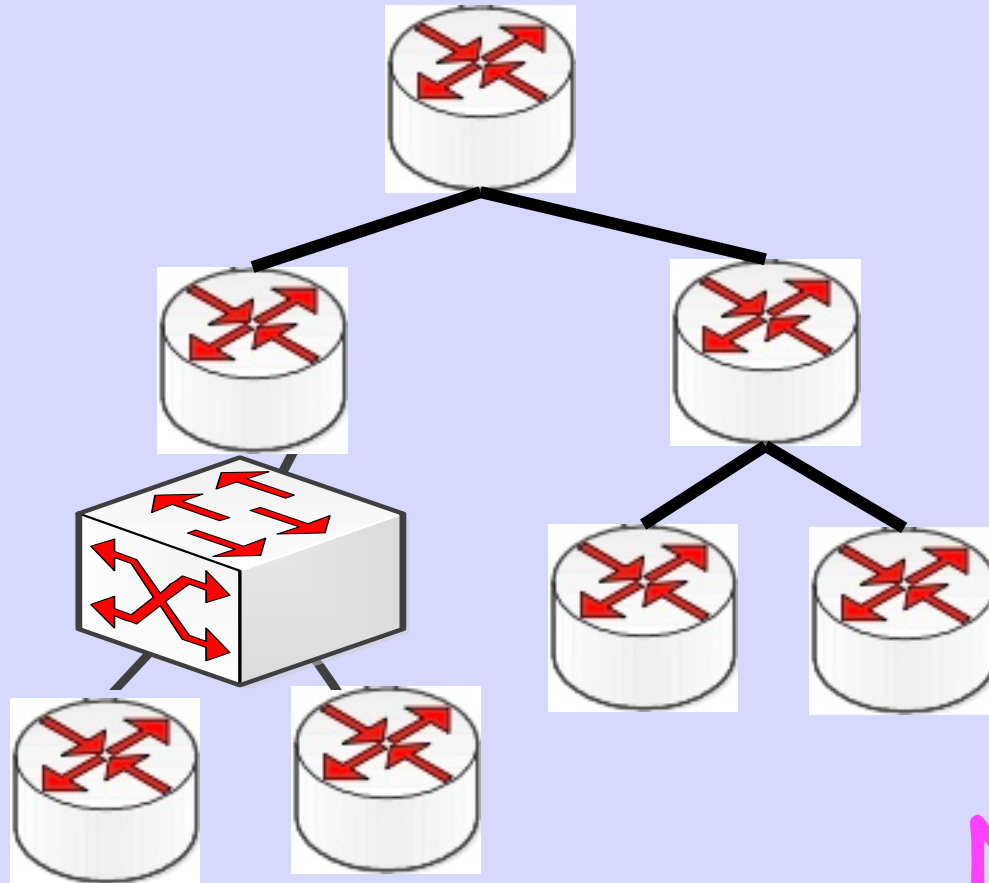


# This Clos is



And they are all L3DL Speakers

# This at Worst



No  
Storm

So,  
Do We Have  
a Problem?