

# Capabilities Status

draft-ietf-roll-capabilities

ROLL IETF 110

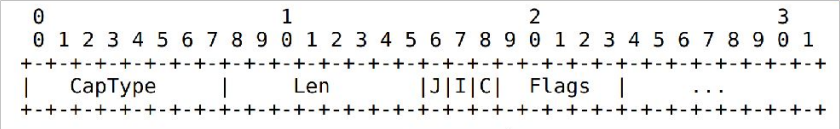
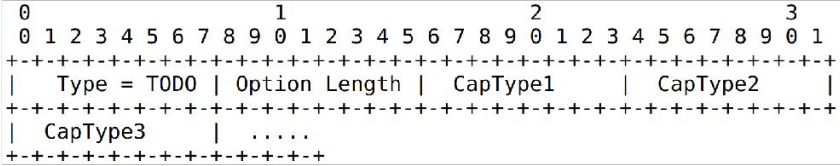
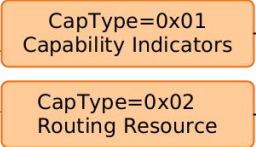
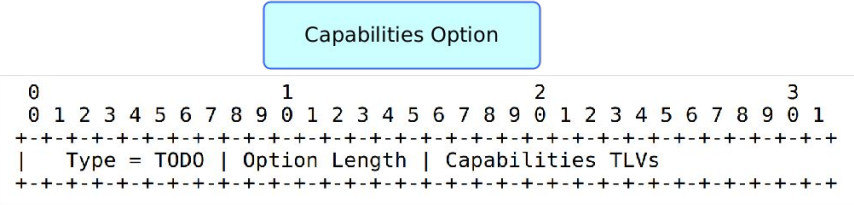
# What does the document contain?

- Capability Options that can be carried in any RPL messages
- Two specific capabilities
  - Capability Indicator flags
  - Routing Resource Capability
- Capability Query/Response signalling
- Guidelines for defining new capabilities

## MUSTs:

- Handling of Capabilities MUST be supported if the network uses MOPex [I-D.ietf-roll-mopex].

# Capability Options



Join as Leaf  
if cap not understood

Copy cap  
if not understood

Ignore msg if cap  
not understood

# Capability Query/Response

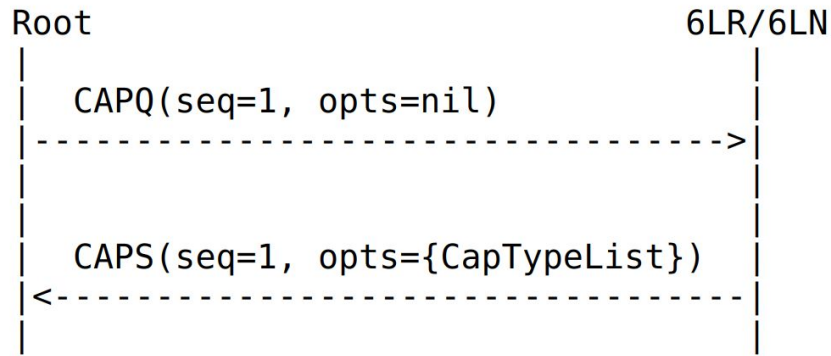


Figure 8: Query supported Cap Types

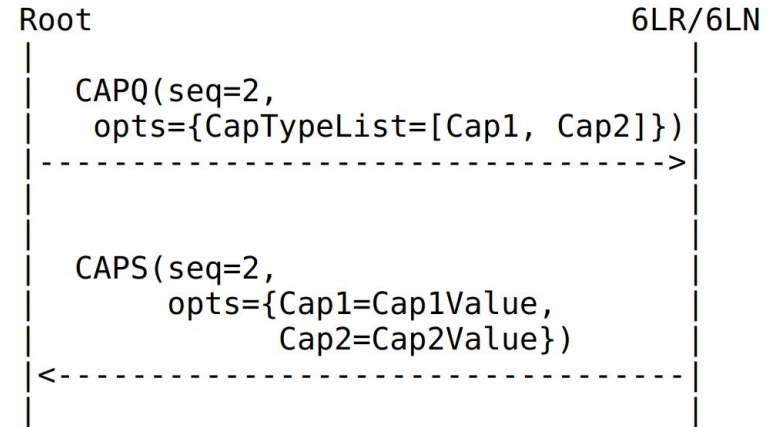


Figure 9: Query specific Cap Set

And the corresponding secure messages.

# MOPex Status

draft-ietf-roll-mopex

# What does the document contain?

- Defines MOPex
  - Base MOP == 7, expect MOPex control option to be present
- Explains handling of MOPex under various conditions
- Extending RPL control options

# Extending RPL Control Options

Problem Statement: How to handle unknown RPL Control Options?

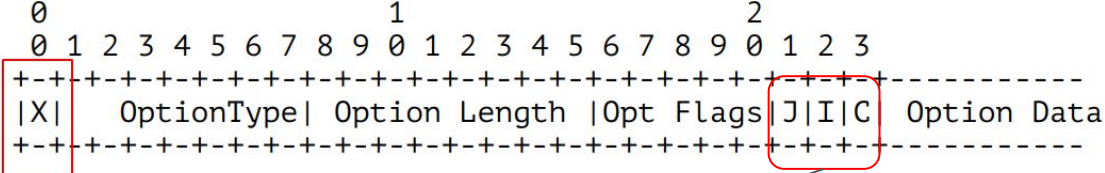


Figure 2: Extended RPL Option Format

Problem Statement: What to do if the control options is not known?

'J' bit	'C' bit	Handling
0	0	Strip off the option, and the node can join as 6LR
0	1	Copy the option, and the node can join as 6LR
1	NA	Join as 6LN

# Overall Status

- No tickets open
- Received one detailed review from Dominique
- Updates were presented in the past interims too

MOPex does not have any complex handling or introduction of any new messages. Capabilities does have somewhat complex handling. MOPex is precursor for capabilities.

Can we go for LC for MOPex?