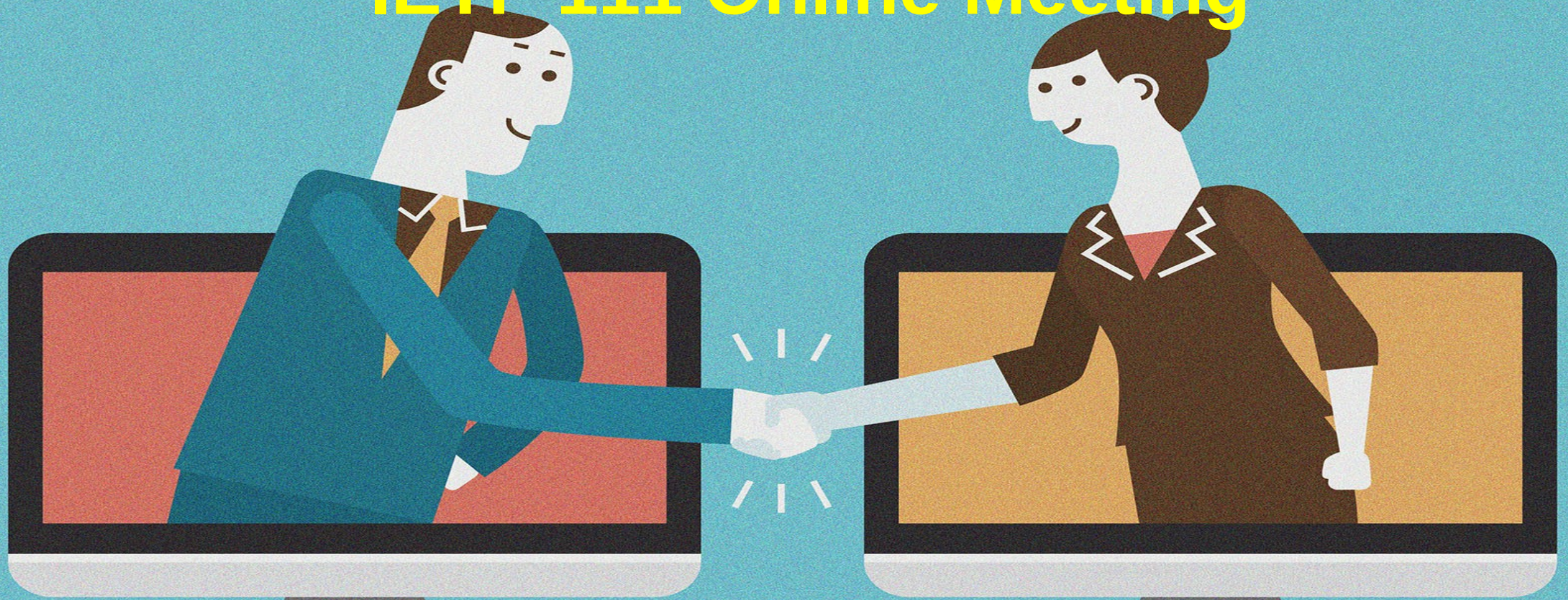


IETF 111 Online Meeting



CCAMP Working Group

Online Agenda and Slides at: <https://tools.ietf.org/wg/ccamp/agenda>

Data tracker: <http://datatracker.ietf.org/wg/ccamp/>

Tools page: <http://tools.ietf.org/wg/ccamp>

Note Well

This is a reminder of IETF policies in effect on various topics such as patents or code of conduct. It is only meant to point you in the right direction. Exceptions may apply. The IETF's patent policy and the definition of an IETF "contribution" and "participation" are set forth in BCP 79; please read it carefully.

As a reminder:

- By participating in the IETF, you agree to follow IETF processes and policies.
- If you are aware that any IETF contribution is covered by patents or patent applications that are owned or controlled by you or your sponsor, you must disclose that fact, or not participate in the discussion.
- As a participant in or attendee to any IETF activity you acknowledge that written, audio, video, and photographic records of meetings may be made public.
- Personal information that you provide to IETF will be handled in accordance with the IETF Privacy Statement.
- As a participant or attendee, you agree to work respectfully with other participants; please contact the ombudsteam (<https://www.ietf.org/contact/ombudsteam/>) if you have questions or concerns about this.

Definitive information is in the documents listed below and other IETF BCPs. For advice, please talk to WG chairs or ADs:

- BCP 9 (Internet Standards Process)
- BCP 25 (Working Group processes)
- BCP 25 (Anti-Harassment Procedures)
- BCP 54 (Code of Conduct)
- BCP 78 (Copyright)
- BCP 79 (Patents, Participation)
- <https://www.ietf.org/privacy-policy/> (Privacy Policy)



I E T F

Session

- **Date:** 26th July 2021
- **Meeting Time:** 19:00 PM (UTC), Monday
- **Duration:** 120 Minutes

- **Details:**

<https://datatracker.ietf.org/meeting/111/agenda/>

Agenda

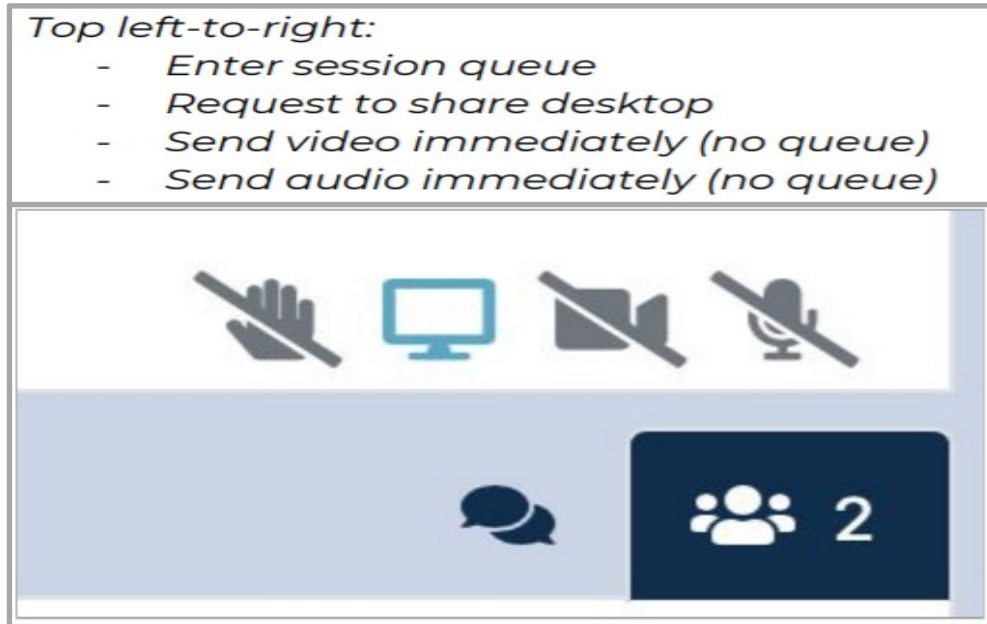
| Presentation | Start Time | Duration | Information |
|--------------|------------|----------|---|
| 0 | 12:00 | 15 | Title: Administrivia - WG Status - Reporting on WG drafts not being presented - Milestones Update - Charter Update Presenter: Chairs |
| 1 | 12:15 | 15 | Title: A YANG Data Model for Optical Impairment-aware Topology Draft: https://datatracker.ietf.org/doc/draft-ietf-ccamp-optical-impairment-topology-yang Presenter: S.Belotti/D.Beller |
| 2 | 12:30 | 10 | Title: A YANG Data Model for Layer 0 Types - Revision 2 Draft: https://datatracker.ietf.org/doc/draft-esdih-ccamp-layer0-types-ext/ Presenter: S.Belotti/D.Beller |
| 3 | 12:40 | 15 | Title: A YANG model to manage the optical interface parameters for an external transponder in a WDM network Draft: https://datatracker.ietf.org/doc/draft-ietf-ccamp-dwdm-if-param-yang/ Presenter: G.Galimberti/G.Grammel |
| 4 | 12:55 | 15 | Title: A YANG Data Model for Flexi-Grid Optical Networks and flexi-grid media channels Draft: https://datatracker.ietf.org/doc/draft-ietf-ccamp-flexigrid-yang/ Draft: https://datatracker.ietf.org/doc/draft-ietf-ccamp-flexigrid-media-channel-yang-03 Presenter: Daniel King |
| 5 | 13:10 | 15 | Title: Transport Northbound Interface Applicability Statement and Applicability of ACTN to Packet Optical Integration Draft: https://datatracker.ietf.org/doc/ietf-ccamp-transport-nbi-app-statement Draft: https://datatracker.ietf.org/doc/ietf-teas-actn-poi-applicability Presenter: Daniel King |
| 6 | 13:25 | 15 | Title: A YANG Data Model for Transport Network Client Signals and client signal performance monitoring Draft: https://datatracker.ietf.org/doc/draft-ietf-ccamp-client-signal-yang Draft: https://datatracker.ietf.org/doc/draft-zheng-ccamp-client-pm-yang Presenter: Haomian Zheng |
| 7 | 13:40 | 10 | Title: Framework and Data Model for OTN Network Slicing Draft: https://datatracker.ietf.org/doc/draft-zheng-ccamp-yang-otn-slicing Presenter: Aihua Guo |
| 8 | 13:50 | 10 | Title: YANG Data Model for FlexE Management Draft: https://datatracker.ietf.org/doc/draft-wang-ccamp-flexe-yang-cm Presenter: Minxue WANG/Yuanlong JIANG |
| Adjourn | 14:00 | | |

Administrative

- Meetecho
 - <https://meetings.conf.meetecho.com/ietf111/?group=ccamp&short=&item=1>
- Meetecho documentation:
 - <https://www.ietf.org/media/documents/IETF-Meetecho-Documentation.pdf>
- Participant view of controls and tabs

Top left-to-right:

- Enter session queue
- Request to share desktop
- Send video immediately (no queue)
- Send audio immediately (no queue)



The image shows a control bar with four icons: a hand with a slash, a monitor, a video camera with a slash, and a microphone with a slash. Below these icons is a dark blue bar containing a chat icon (two speech bubbles) and a participant list icon (three people silhouettes with the number 2).

Bottom left-to-right:

- Chat window
- Participant list



The image shows a participant view interface for an IETF 110 testing session. At the top, it displays the IETF logo and the text "110 testing". Below this is a profile card for "Greg Wood" (PARTICIPANT) with control icons for hand, desktop, video, and audio. A chat window icon and a participant list icon (showing 2 participants) are also visible. The interface is divided into sections: "CHAIRS" with a "Chair" (CHAIR) profile, and "PARTICIPANTS" with a "Greg Wood" (PARTICIPANT) profile.

Administrative

- Minute takers
 - <https://codimd.ietf.org/notes-ietf-111-ccamp>
 - Anyone taking the minutes would be much appreciated.
- Bluesheets
 - will be automatically generated based on your datatracker information so there is no need to do anything further after you've authenticated with the IETF Datatracker to join the session.

Reminder: IPR Process

- Polling of draft authors & contributors
 - Prior to moving to next step in WG process
 - e.g., before an individual draft becomes a WG document or a WG document goes to last call
 - Requires IPR compliance statement from ***all*** listed in draft

Reminder - Utilizing Mailing List

- We strongly encourage the mailing list to be more actively used for all Working Group discussions
 - Open issues
 - Introducing new drafts
 - Potential new Working Group topics
- Reminder – Working Group Consensus is determined on the mailing list
- Future meeting time will be scheduled relative to mailing list discussion

CCAMP Working Group Status

Chairs:

Daniele Ceccarelli <daniele.ceccarelli@ericsson.com>

Fatai Zhang <zhangfatai@huawei.com>

Secretary:

Oscar Gonzalez de Dios

<oscar.gonzalezdedios@telefonica.com>

Responsible AD:

John Scudder <jgs@juniper.net>

Document Status – RFCs

- Recent RFCs:
 - None
- RFC Editor's Queue:
 - [draft-ietf-ccamp-layer0-types](#)
 - [draft-ietf-ccamp-wson-yang](#)
- IESG processing
 - [draft-ietf-ccamp-transport-nbi-app-statement](#)

Document Status – WG Drafts

- Expired and waiting for the authors
 - [draft-ietf-ccamp-wson-iv-info](#)

Document Status – WG Drafts on Agenda

- [draft-ietf-ccamp-layer0-types](#)
- [draft-ietf-ccamp-optical-impairment-topology-yang](#)
- [draft-ietf-teas-actn-poi-applicability](#) (from TEAS)
- [draft-ietf-ccamp-flexigrid-media-channel-yang](#)
- [draft-ietf-ccamp-flexigrid-yang](#)
- [draft-ietf-ccamp-transport-nbi-app-statement](#)
- [draft-ietf-ccamp-eth-client-te-topo-yang](#)
- [draft-ietf-ccamp-dwdm-if-param-yang](#)

Document Status – WG Drafts Not on Agenda

- Nothing changed since the last online meeting
 - [draft-ietf-ccamp-dwdm-if-imp](#)
 - [draft-ietf-ccamp-wson-iv-info](#)
 - [draft-ietf-ccamp-eth-client-te-topo-yang](#)
 - [draft-ietf-ccamp-l1csm-yang](#)
 - [draft-ietf-ccamp-layer1-types](#)

Document Status – WG Drafts Not on Agenda

- [draft-ietf-ccamp-gmpls-otn-b100g-applicability](#)
 - Only dates changed to keep alive
 - IPR polling is ongoing for preparation of WG last

Document Status – WG Drafts Not on Agenda

- [draft-ietf-ccamp-otn-topo-yang](#)
 - Submitted the -13 revision only to align the prefix to the latest discussions in CCAMP WG (otnt)
 - Next step: ready for WG LC
- [draft-ietf-ccamp-otn-tunnel-model](#)
 - Submitted the -13 and -14 revisions to improve the description of the model in section 3 and to align the augment statements to the latest version of ietf-te, fixing datatracker compilation errors
 - Next step: Determine the prefix, and proceed after WG LC of ietf-te in TEAS WG

Liaisons and Communications

- From ITU-T SG15
 - Title: LS on OTNT Standardization Work Plan Issue 29
 - Submission Date: 2021-05-07
 - URL of the IETF Web page: <https://datatracker.ietf.org/liaison/1738/>
 - Action is needed for a joint effort from ccamp, mpls, pals, pce, teas

- **Please review incoming documents and comment on ccamp@ietf.org**

**THANK
YOU!**