

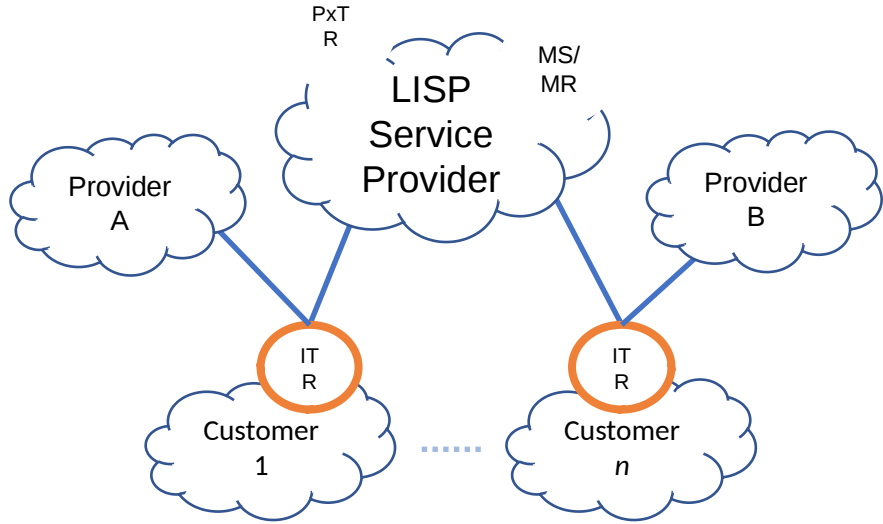
LISP Transport for Policy Distribution

draft-kowal-lisp-policy-distribution-00

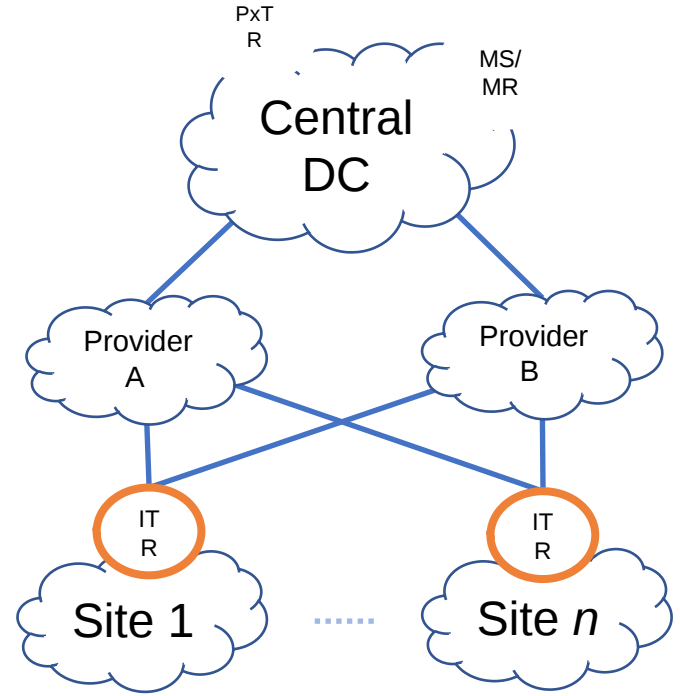
IETF 111 Online – July 2021

Michael Kowal, Marc Portoles, Amit Jain, Dino Farinacci

Motivation



Internet edge



WAN

Encoding

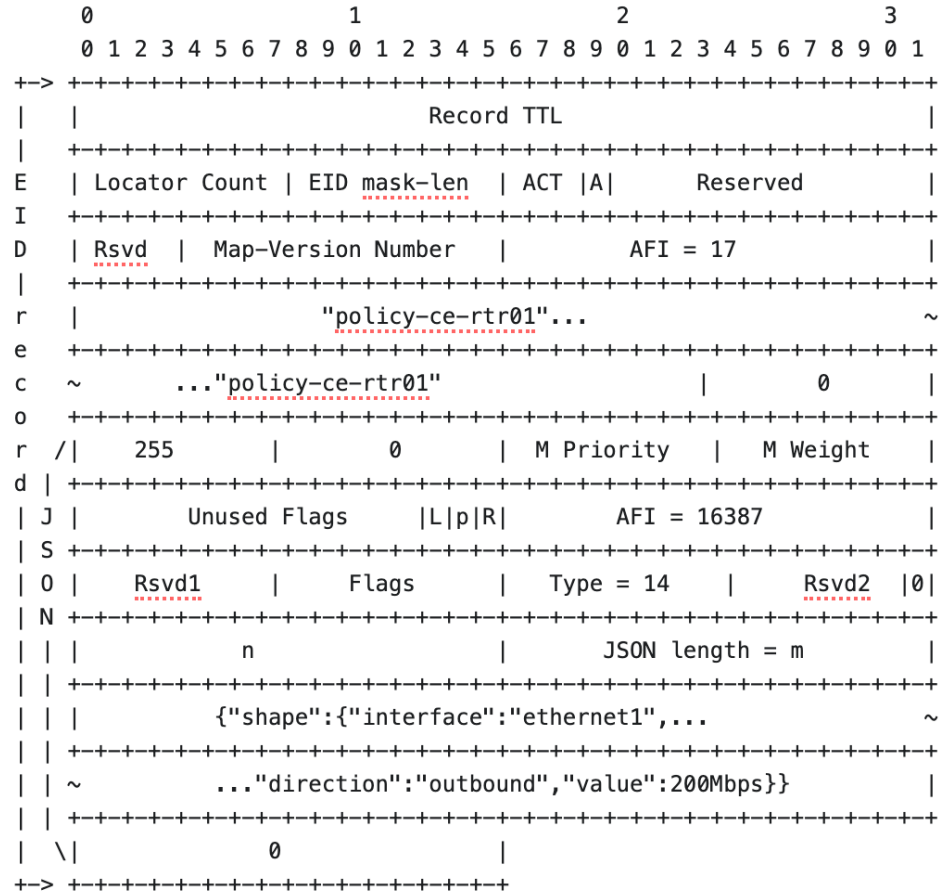
- EID

- Use Distinguished Name encoding
- Shared name between xTR and mapping system request policies
- Example: "policy-ce-rtr01"

- RLOC: JSON

- Use JSON LCAF (type 14)

```
{
  "shape":
  {
    "interface": "ethernet1",
    "direction": "outbound",
    "value": 200Mbps
  }
}
```



Packet Flow description

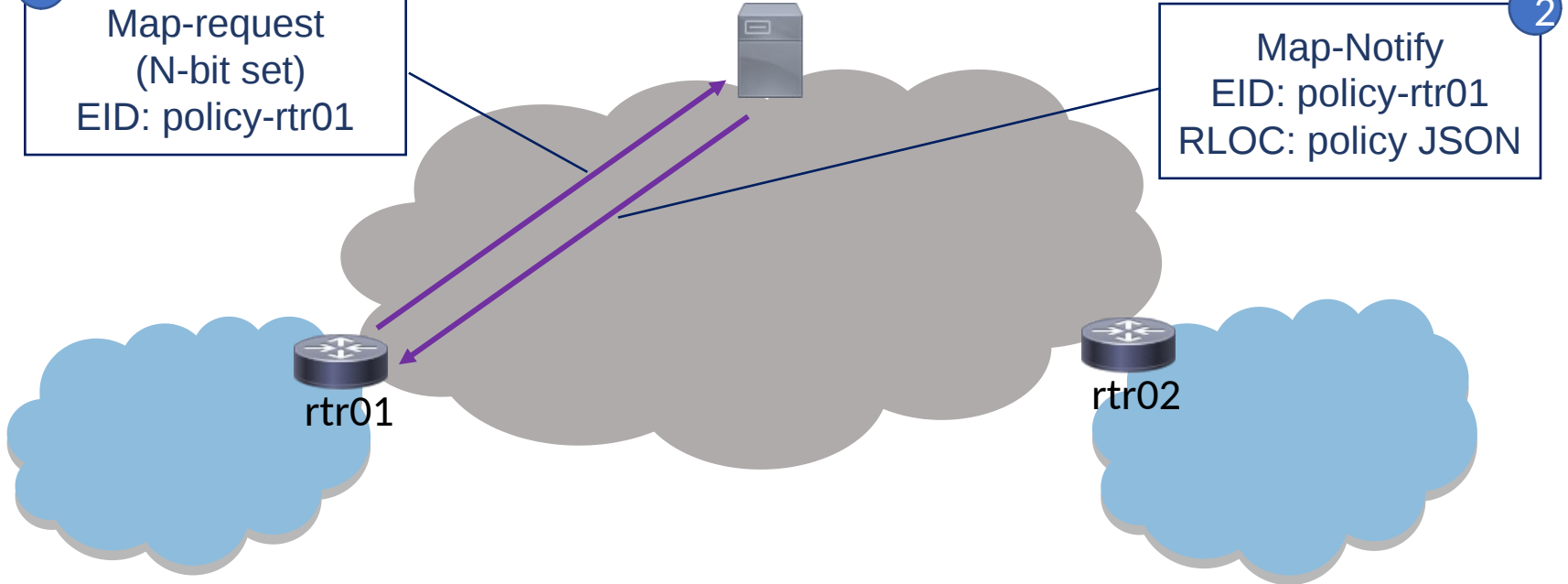
Mapping-Database
policy-rtr01-> {shape:{iface:eth1, rate:200Mbps}}
policy-rtr02-> {shape:{iface:eth1, rate:200Mbps}}

1

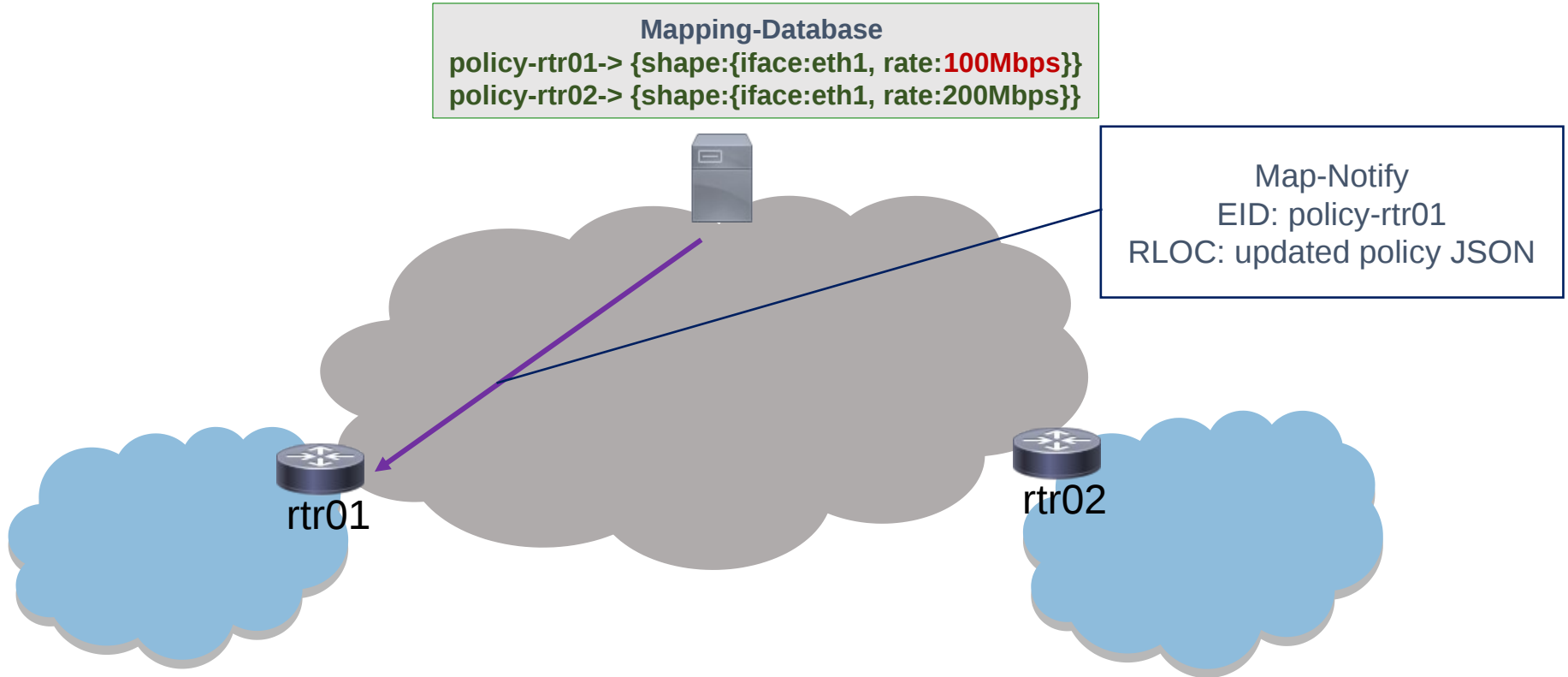
Map-request
(N-bit set)
EID: policy-rtr01

2

Map-Notify
EID: policy-rtr01
RLOC: policy JSON



Packet Flow description



Next Steps

- WG accept lisp-name-encoding
- Looking for feedback and comments