

Update on BRSKI-AE: Alternative Enrollment Protocols in BRSKI

[draft-ietf-anima-brski-async-enroll-05](#)

Repo so far: <https://github.com/anima-wg/anima-brski-async-enroll>

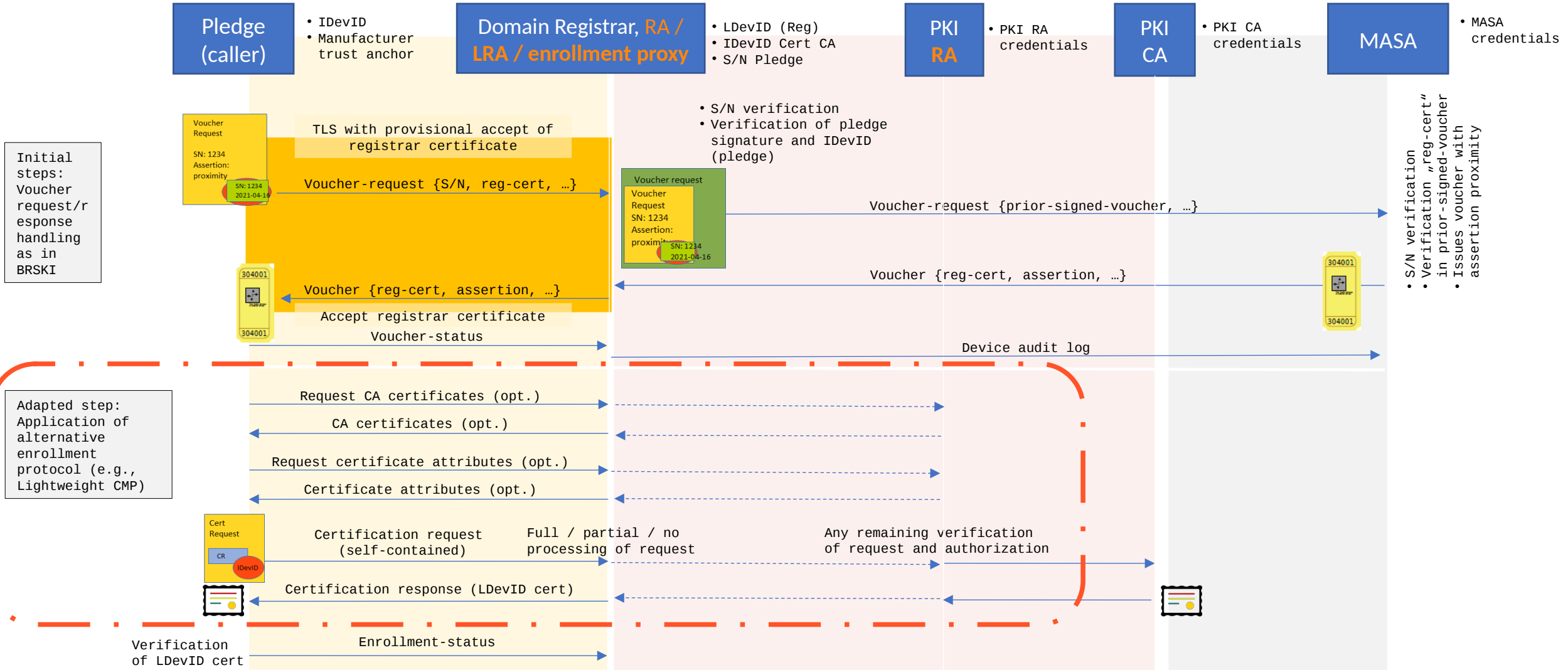
Proposed new repo URL: <https://github.com/anima-wg/anima-brski-ae>

David von Oheimb, Steffen Fries, Hendrik Brockhaus, Eliot Lear

David von Oheimb (Ed.)

IETF 113 – ANIMA Working Group

BRSKI-AE: abstract protocol overview



BRSKI-AE status: recent changes

From draft version 04 to version 05:

- After the split with BRSKI-PRM, David von Oheimb became the editor.
- Shifted the emphasis towards supporting alternative enrollment protocols.
- Updated the title accordingly - preliminary change to be approved.
- Moved comments on EST and detailed application examples to informative annex.
- Moved the remaining text of section 3 as two new sub-sections of section 1.
- Streamlined wording, consolidated terminology, improved grammar, etc.

BRSKI-AE status: next steps

- Clarification of open issues stated in the draft (currently no open issues on the [ANIMA git](#)):
 - Application of Lightweight CMP Profile: some details to be clarified/defined
 - Whether to use `/getcacerts` or the `caPubs` and `extraCerts` fields when further to-be-trusted (root CA) certificates and possibly other CA certs are needed
 - Whether to use `/getcertreqtemplate` or let the registrar modify the CRMF and use `raVerified`
 - Specify the optional use of `implicitConfirm` as alternative to `certConf`
 - Whether to specify the use of `/p10`
 - Application of EST with `/fullCMC`
- Further updates pending to fix the above and potential further issues
- WG review appreciated
- PoC implementation ongoing; please email us if you are interested in interop testing