

SRPM Path Consistency over SRv6

draft-weng-ippm-srpm-path-consistency-over-srv6-03

Sijun Weng (China Mobile)

Weiqliang Cheng (China Mobile)

Changwang Lin (New H3C Technologies)

Xiao Min (ZTE Corp)

IETF-115

Overview

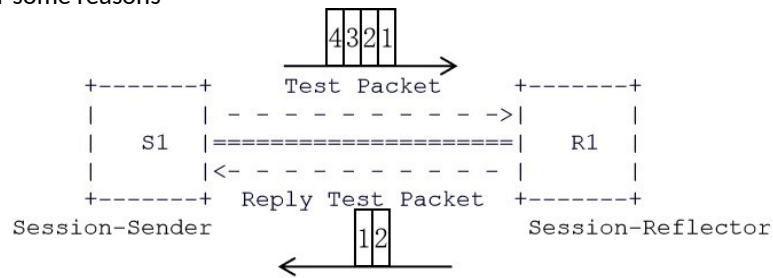
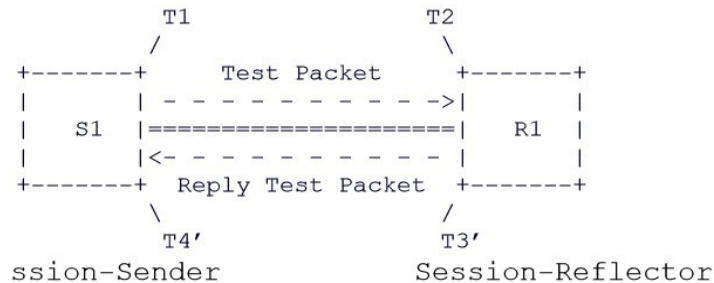
✓ objective

To measure SRv6 Policy through STAMP and TWAMP light, and the transmission paths of test packets and reply packets are **consistent**

✓ Requirement for consistent path

In the case of **inconsistent** paths ☐

- delay measure is inaccurate
- loss measure is inaccurate
- Reply packets are forwarded based on IP forwarding and may be discarded for some reasons

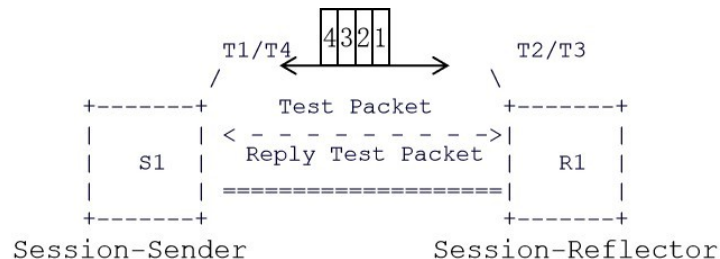


✓ Fundamental

- Carrying path segment [draft-ietf-spring-srv6-path-segment] in test packet

Encapsulate the Path segment in SRH, and set SRH.Flag to identify the existence of the path segment

- Reflector uses the path segment to forward reply packets through consistent path



Thank You