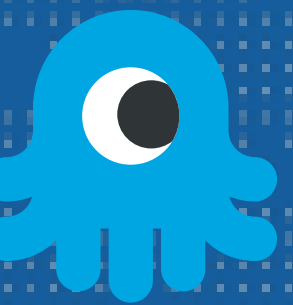


7170bis

ARE WE THERE YET?

ALAN DEKOK IETF 116



TEAP

- ▶ Many, many changes since IETF 115.
- ▶ We now have interoperable implementations
 - ▶ Windows, wpa_supplicant, FreeRADIUS, ISE, ...
- ▶ Many clarifications and fixes
- ▶ All errata have been addressed
- ▶ Thanks to the WG members for much feedback and corrections



OPEN ISSUES

- ▶ It looks like no one has implemented PKCS portions
 - ▶ Keep or remove?
- ▶ Request-Action issue raised by Eliot



OPEN ISSUES - SIGNALLING

- ▶ No way to select auth mechanisms based on provided identity
 - ▶ for EAP, Identity comes before selection of EAP type
 - ▶ For inner TEAP, server has to choose EAP / password before it knows identity!
- ▶ No way to signal supported auth types (machine / user)
 - ▶ Must ask, and then return an error
 - ▶ Client cannot sent "I have X and Y", or server sends "I want X and/or Y"



IMPLEMENTATION ISSUES

- ▶ Windows client when configured only for a single authentication whilst the server is for chained authentication you end up with:
- ▶ **server:** please do machine authentication (Identity-Type-TLV) and tell me your identity (EAP-Payload-TLV[EAP-Identity])
 - ▶ notice that these are done simultaneously we cannot get the identity and then pick the type of authentication)
- ▶ **client:** my identity is "host/bobs-workstation" and I am doing EAP-TLS to authenticate
- ▶ **server:** please now do user authentication
 - ▶ server does not know the clients configuration
- ▶ **client:** my identity is "" (empty string)....stall, instead of ?? Error



Q&A

- ▶ Who has read the document in detail?
- ▶ Who has implemented it?
- ▶ Does anyone have operational experience with it?
- ▶

