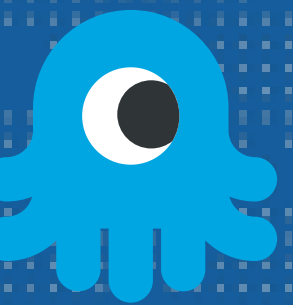


Reverse CoA

JUST USE THE TLS TUNNEL...

ALAN DEKOK IETF 116



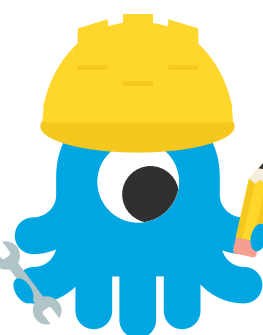
REVERSE COA

- ▶ NAS is unreachable due to FW / NAT, so sending CoA is impossible
- ▶ But... we have a RADIUS/TLS connection from NAS -> server!
 - ▶ Let's just use that
- ▶ Local network
 - ▶ Server magically "knows" what the NAS is based on TLS session information
 - ▶ Perhaps use NAS-Identifier, etc. from Status-Server to correlate with CoA



PROXYING REVERSE COA

- ▶ Just use Operator-Realm as per RFC 8559
 - ▶ Server magically “knows” what the realm is based on TLS session information
 - ▶ Or via static configuration
- ▶ Other than that, pretty much everything is just
 - ▶ “RFC 5176 and RFC 8559, but using inbound RADIUS/TLS connections”



STATUS

- Document should be largely done
 - needs external reviews
- Shipping ~1yr in Aruba, Cisco, and FR

