

# OAM

draft-barthel-schc-oam-schc-01

Authors:

Dominique Barthel <Dominique.Barthel@orange.com>

Laurent Toutain <Laurent.Toutain@imt-atlantique.fr>

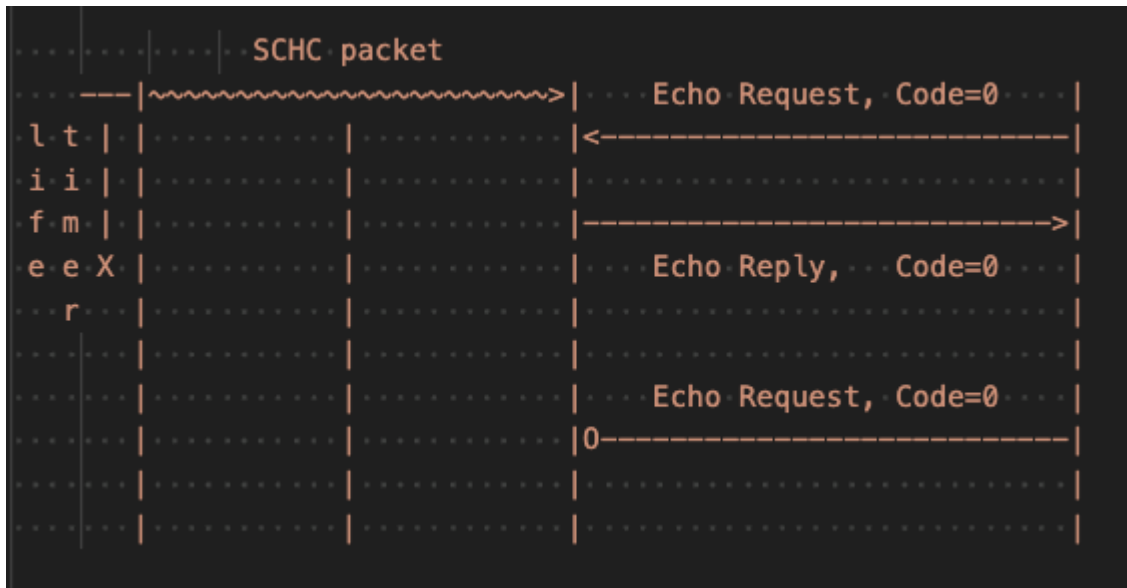
# Title

- Text 1
- Text 2

# Objective

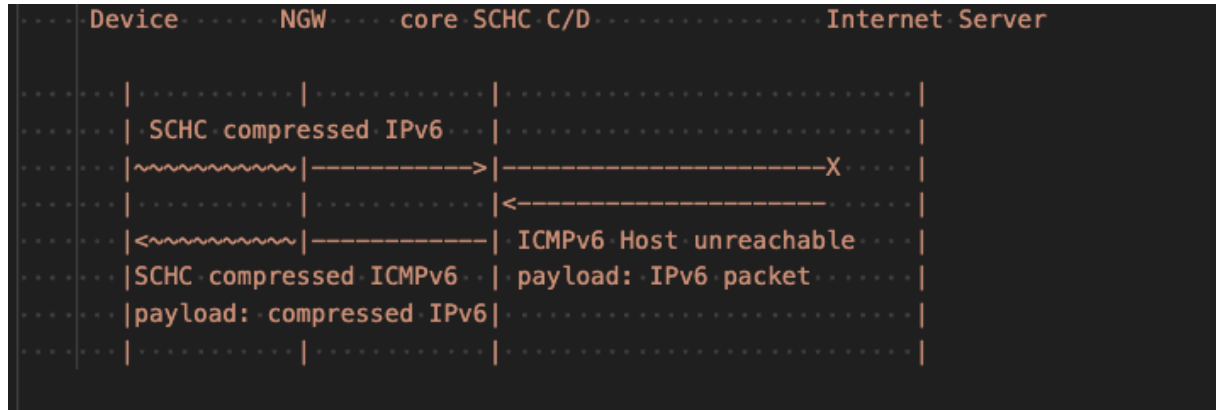
- Focus on RFC 4443
- Compression of ICMPv6 messages
- Add new features to SCHC:
  - Proxy
  - ICMP generation
  - New CDA for ICMP payload
- Implemented in openSCHC

# Ping compression/proxy



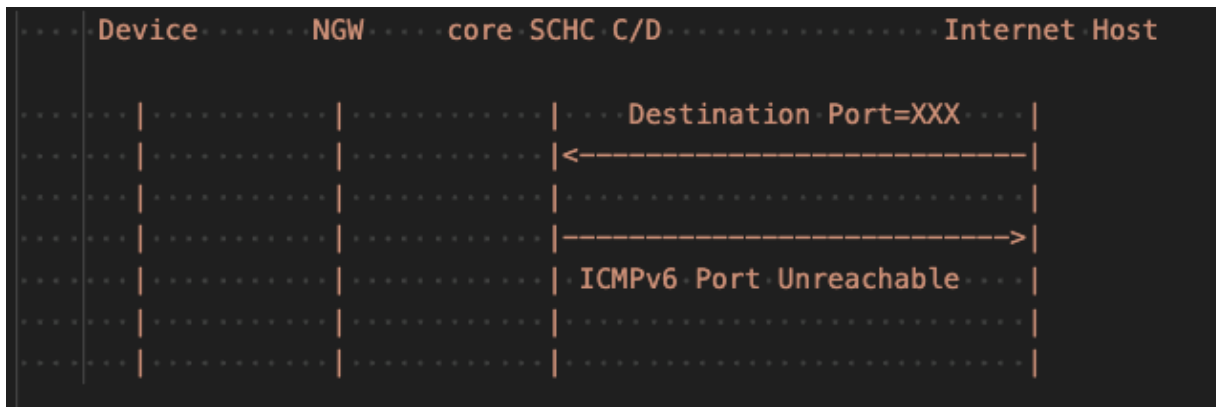
- Add an action to the rule with parameter

# ICMP payload compression



- 2 MO : match-rule, match-rev-rule
- 2 CDA : send-compressed, send-rev-compressed

# ICMP error message



- Device not found : (type 0, code 3) host not found
- Device found by not matching rules: (type 0, code 4) port not found
- Packet cannot be fragmented: Too big (TBD)

# YANG Data Model

- Extend RFC9363

```
module: ietf-schc-oam
```

```
augment /ietf-schc:schc/ietf-schc:rule/ietf-schc:nature/ietf-schc:compression:  
  +-rw proxy-behavior?  schc-oam:proxy-type
```

```
nodes:
```

```
  proxy-behavior
```

```
typedefs:
```

```
  proxy-type
```

```
identities:
```

```
  fid-icmpv6-base-type  
  fid-icmpv6-checksum  
  fid-icmpv6-code  
  fid-icmpv6-identifier  
  fid-icmpv6-sequence  
  fid-icmpv6-type  
  proxy-none  
  proxy-pingv6  
  proxy-schc-message
```