

Mobility Procedures in Presence of Unknown MAC Route (UMR)

IETF 121, Nov 2024
Dublin

<https://datatracker.ietf.org/doc/html/draft-sajassi-bess-evpn-umr-mobility-02>

Ali Sajassi (Cisco),
Lukas Krattiger (Cisco),
Krishna Ananthamurthy (Cisco),
Jorge Rabadan (Nokia)
Drake (Juniper)

Recap

- Presented in IETF-116
- Version-01 changes
 - New Section:
 - MAC Mobility for Gateway Local Attachment Circuits
- Version-02 changes
 - Updated the text with clarifications and fixed few nits.

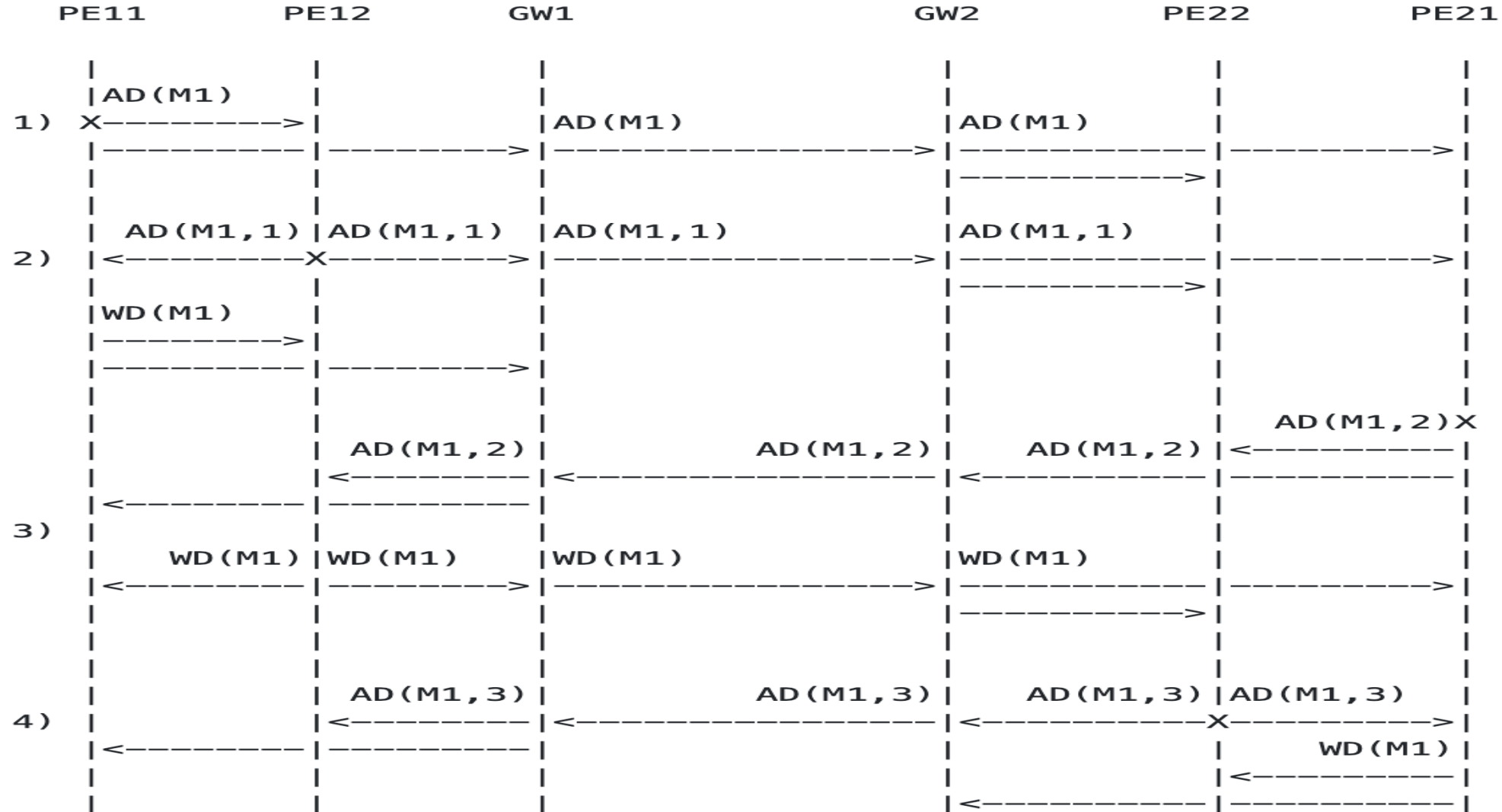
Problem Statement

- Unknown MAC Route (UMR) can be used to improve MAC address scale on leaf nodes (PEs) in a network considerably
 - By limiting MAC address learning on a leaf node to that of its own network (without learning MAC addresses from any other remote networks)
- Interconnect Solution for Ethernet VPN [RFC9014] defines Unknown MAC Route (UMR) utilization for Inter-network connections (e.g., DCI)
- The introduction of UMR breaks MAC mobility procedures and it is now addressed by this draft.

Requirements

1. All leaf nodes (PEs) in a DC need to support UMR
 - a) A network can be partitioned into two logical networks - one supporting UMR and the other doesn't
2. Mobility procedure between UMR capable network and non-capable network **MUST** be seamless
3. UMR support is optional, and a leaf node runs UMR procedures **ONLY** if it receives UMR route

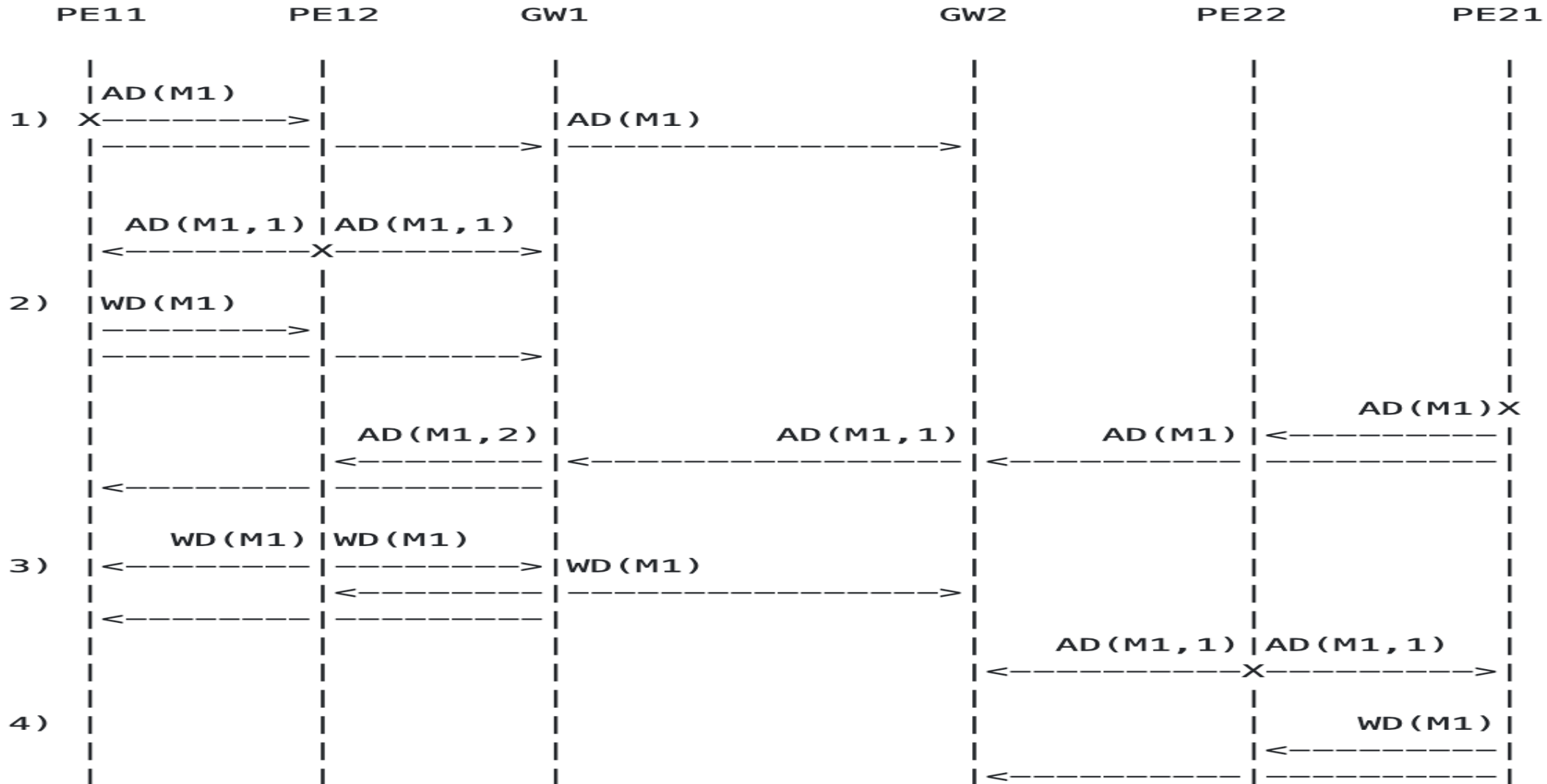
Primer: Inter-network MAC Mobility procedures without UMR



Solution: Inter-network MAC Mobility Procedures for UMR - I

- With UMR, MAC addresses of remote DCs are not propagated to local DCs
- MAC move from remote DC to local DC appears as first-time appearance and not "move" thus breaking mobility procedures
- To address this issue, two MAC counters are kept in the gateways - one for local DC and the other for DCI network
- These two counters get incremented independently - i.e., a local MAC move (Intra DC) does not affect the DCI counter

Solution: Inter-network MAC Mobility Procedures for UMR - II



Duplicate MAC Address Detection

- Duplicate MAC address detection is per RFC 7432
 - No changes is needed
- MAC counter and timer are kept on the leaf nodes (PE devices)
- No need to keep MAC counter and timer on the gateways unless for MACs that are learned locally

Next Step

- Draft is stable from last few IETFs
- Requesting WG adoption.

Thank You!