

Using EAP with EDHOC

draft-ietf-emu-eap-edhoc-02

Dan García-Carrillo, University of Oviedo

Rafael Marín-López, University of Murcia

Göran Selander, Ericsson

John Preuß Mattsson, Ericsson

IETF 121

Summary of main items

- Review by Marco Tiloca
- One issue for discussion

Review by Marco Tiloca

<https://mailarchive.ietf.org/arch/msg/emu/p4iES9DY5NnnuR76o4MncNOL1sw/>

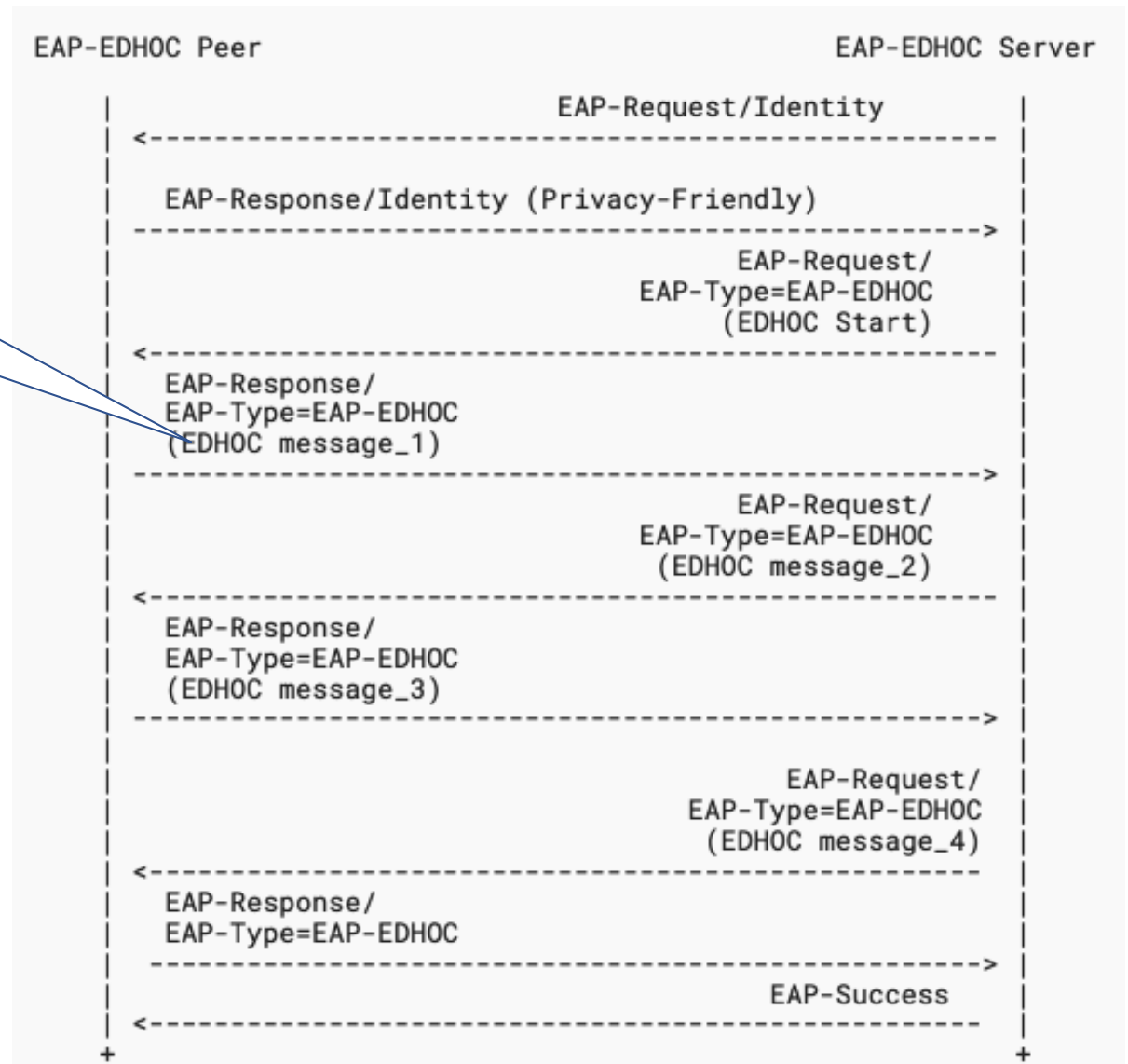
- Many detailed comments on the draft
 - Rephrasing
 - Typos
 - Clarifications
 - Corrected Figure 6
- One major comment (next slide)

Thank you for the review!

For discussion

The Initiator declares its connection identifier **C_I** in message_1

Is there a need to use the EDHOC connection identifiers externally to correlate EDHOC messages belonging to an EAP authentication session?



For context: EDHOC over CoAP

Some EDHOC-over-CoAP messages has an external connection identifier for correlation (Appendix A in RFC 9528)

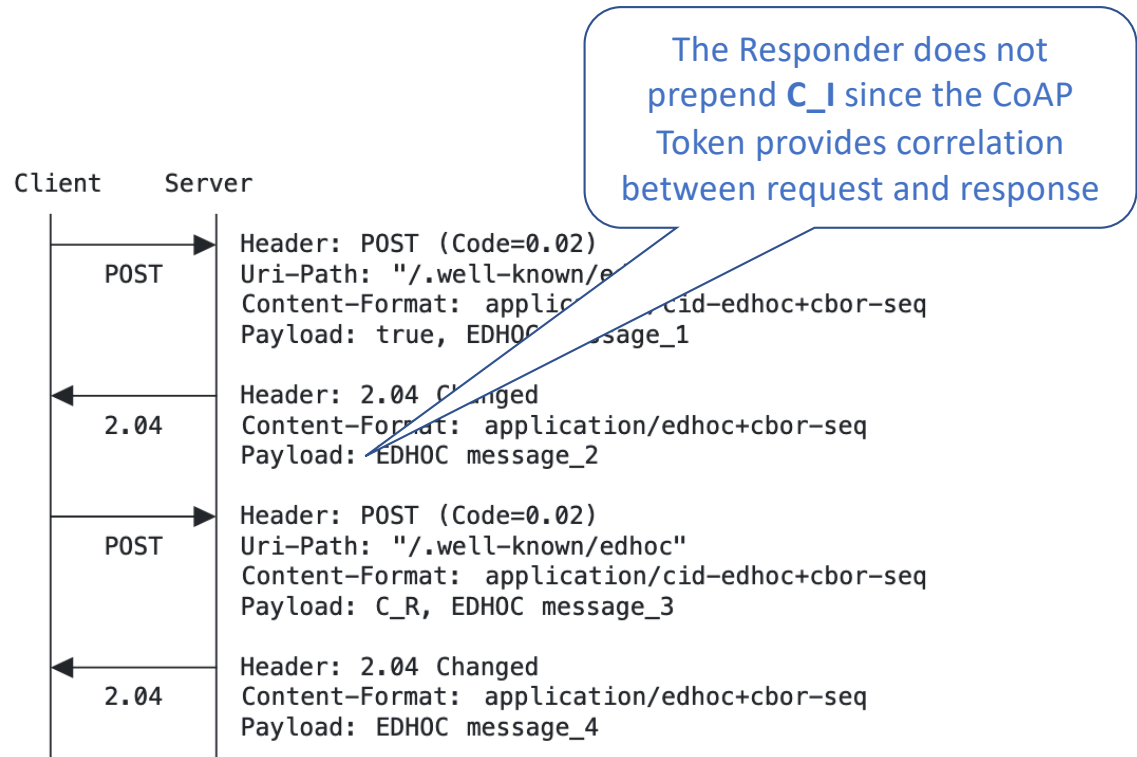
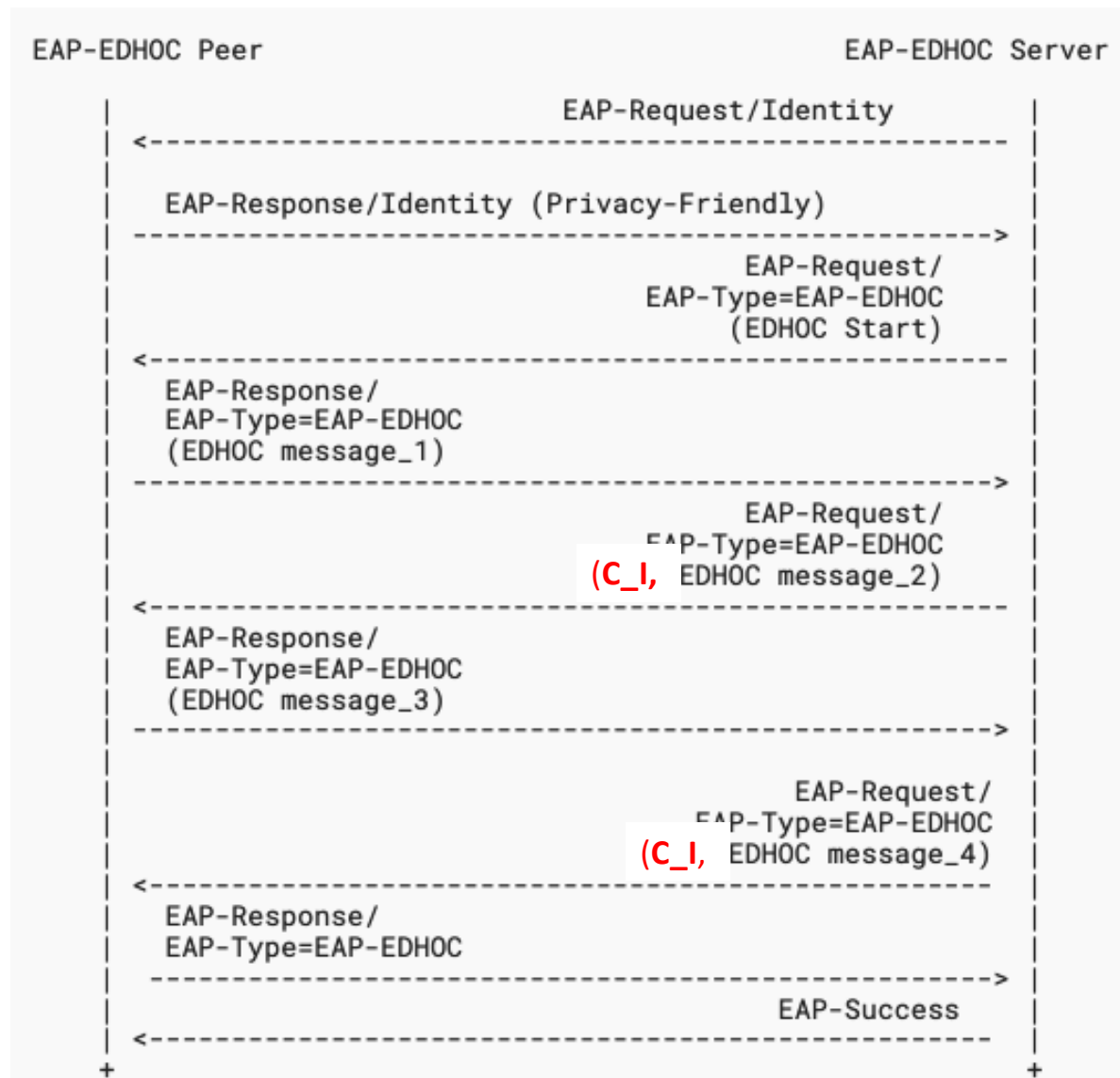


Figure 10: Example of the Forward Message Flow

Question to the WG

- To answer this, there is a more general question for the EMU WG:
 - Can any EAP method assume that EAP layer and the lower layers will keep all EAP exchanges request/response for one EAP session distinguishable and separated from other EAP authentication sessions (perhaps run in parallel)?
 - In other words, how is an exchange EAP request/response correlated from a next EAP request/response?
- If YES: We do not need add external connection identifiers to EDHOC messages in EAP-EDHOC
- If NO: EAP-EDHOC should add this information to correlate all the EAP-EDHOC request/responses for a particular EAP authentication session
- We think the answer is YES

If NO ... (and fragmentation needs to be solved)



Next steps

- Resolve the correlation issue
- Further reviews are appreciated

THANK YOU