

SATP Stage-Zero Problem Areas

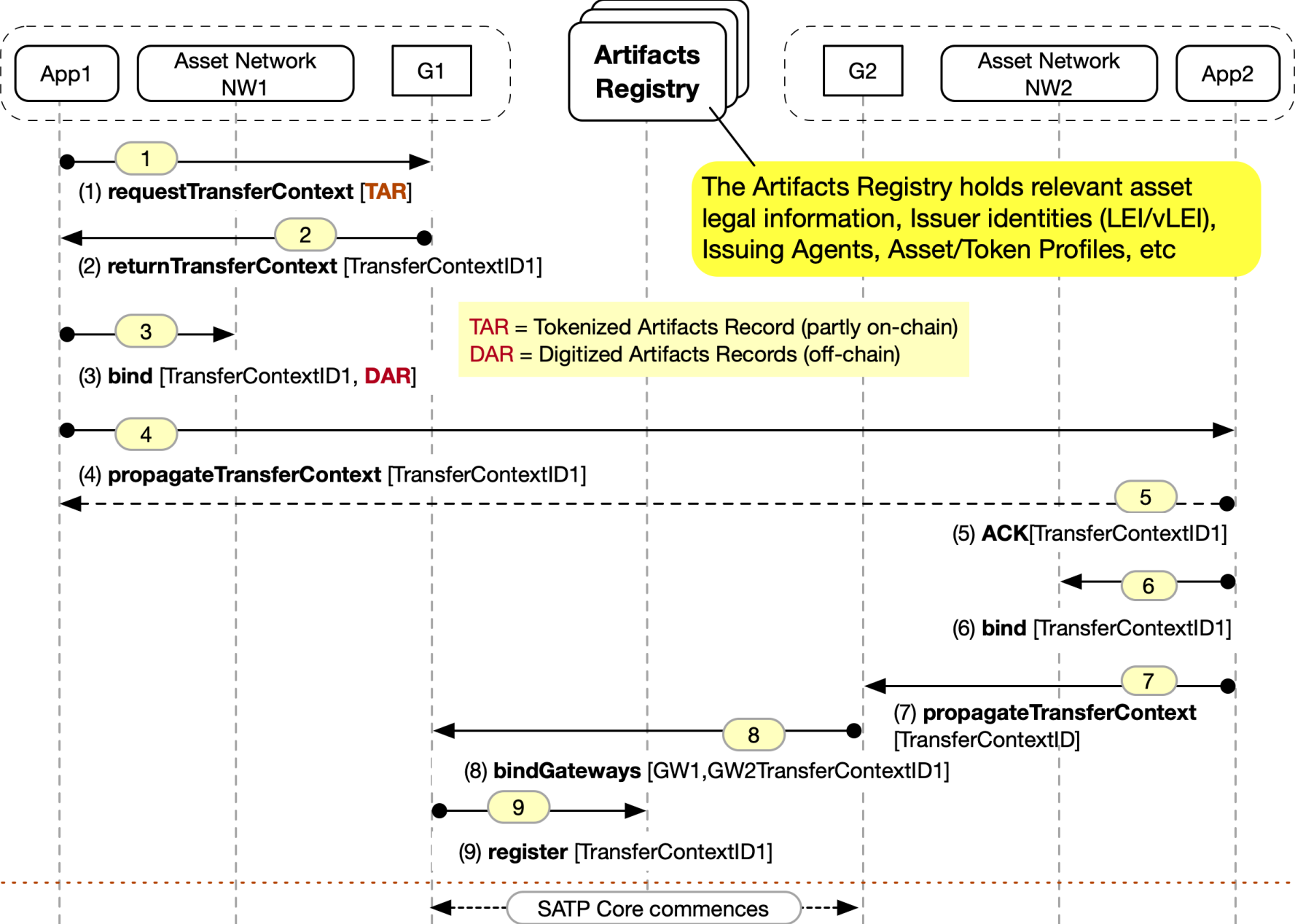
SATP Working Group
IETF125 Shenzhen
18 March 2026

Thomas Hardjono, Denis Avrillionis, Venkatraman Ramakrishna, Ned Smith, Rafael Belchior

Stage-0: Three Problem Areas

- (1) Pre-Transfer Context Establishment:
 - How does Originator/App1 and Beneficiary/App2 share contextual information regarding a transfer
- (2) How do Asset Issuers “publish” artifacts metadata about the asset to an *Artifacts Registry(s)*
- (3) Discovery & Access to asset-related artifacts
 - The requirements & capabilities of an Artifact Registry

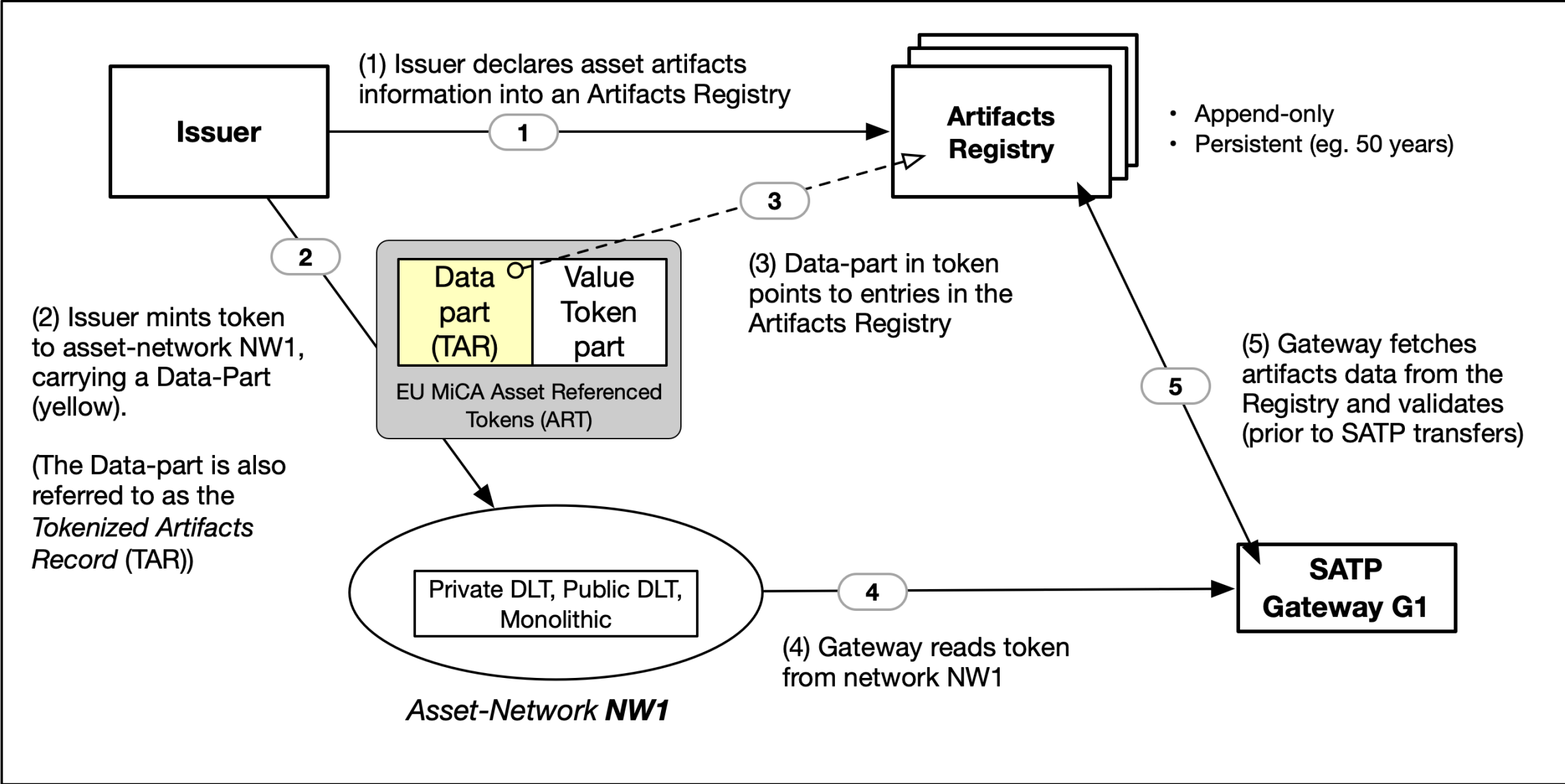
Problem Area #1: Pre-Transfer Context Establishment



Problem Area #1: Pre-Transfer Context Establishment

- Set of flows that enable SATP gateways to agree to *transfer context information* pertaining to the asset
 - The outcome is an agreed TransferContextID value
 - Agreed upon by Alice/Bob (i.e. their Apps) and gateways
- Includes several verification steps:
 - Correct identification of the asset in network NW1
 - Verification of *identity* of actors involved in the transfer
 - Correct management of artifacts metadata of the asset – which may need to be updated due to the transfer

Problem Area #2: Publishing Artifacts to a Registry



Problem Area #2: Publishing to Registry (cont.)

- What are the required *properties* of the Artifacts Registry and its Interface (APIs)
- The Tokenized Artifacts Record (TAR):
 - The “data” part of a value-bearing token that carries references to digital records (typically off-chain)
 - Defined by the EU MiCA Regulation (2023) for asset-referenced tokens (i.e., non-currency tokens)
 - The TAR needs to accompany the value-bearing token on the same asset-network
 - The form of the TAR affects the design of the Registries

Problem Area #3: Discovery & Management of Registries

- Selection: which Registry does an Issuer publish to?
 - Is it asset-class dependent? Industry dependent?
- If a tokenized asset is transferred via SATP from network NW1 to NW2, does the Data-part (TAR) of the token also gets copied over to NW2?
- If the artifacts metadata in a registry is updated, how do interested parties get notified?
 - Pub-Sub model?
- Does identity information also get stored in the Registry?
- Lots more questions...

Thank You and Q&A