



# WIMSE

**IETF 125    March 2026    Shenzhen**

Welcome and Chair Updates

# Note Well - A reminder of IETF policies

By participating in the IETF you agree to follow [IETF processes and policies](#). This Note Well is a reminder of some of those policies.

- IETF participants are expected to behave in a professional manner and extend respect and courtesy to their colleagues at all times (see [RFC 7154: IETF Guidelines for Conduct](#) and [IETF Anti-Harassment Policy](#)). If you have any concerns about behavior, please contact the [Ombudsteam](#) who have a duty of confidentiality and extensive powers to act, as set out in [RFC 7776: IETF Anti-Harassment Procedures](#).
- If you are aware that any IETF contribution (as defined in [RFC 5378: Rights Contributors Provide to the IETF Trust](#)) is covered by patents or patent applications that are owned or controlled by you, your employer or your sponsor, you must disclose that fact, or not participate in the discussion (see [RFC 8179: Intellectual Property Rights in IETF Technology](#)).
- For detailed process information consult [RFC 2026: Internet Standards Process](#) and [RFC 2418: IETF Working Group Guidelines and Procedures](#) and updates to those.
- The IETF routinely makes public written, audio, video, and photographic records of IETF activities, including your personal information as set out in the [IETF Privacy Statement](#).

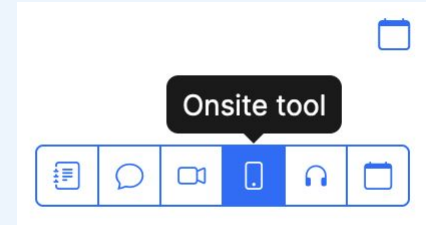
For advice, please talk to Working Group chairs or Area Directors



# Meeting Tips

## In-person Participants

- Make sure to sign into the session using Meetecho (use the “on-site tool” from the QR code or the Datatracker agenda page)
- Use Meetecho to join the queue
- Keep audio and video off (the room has cameras and mics)



## Remote Participants

- Keep audio and video off unless you are actively speaking or presenting
- Use of a headset is RECOMMENDED

# Welcome to WIMSE!



**W**orkload  
**I**ntity in  
**M**ulti-  
**S**ystem  
**E**nvironments



# Agenda OKRs

- **Agenda & Chair Updates** (5min): Chairs
- **WIMSE Workload Credentials** (8min): Brian, Joe, Arndt, Yaron, Yaroslav
- **Workload Proof Tokens** (8min): Brian
- **HTTPSig** (8min): Yaron
- **WIMSE Architecture** (8min): Joe
- **WIMSE Identifier** (8min): Yaroslav
- **Identity Practices WGLC** (5min): Arndt
- **AOB** (10min): Chairs

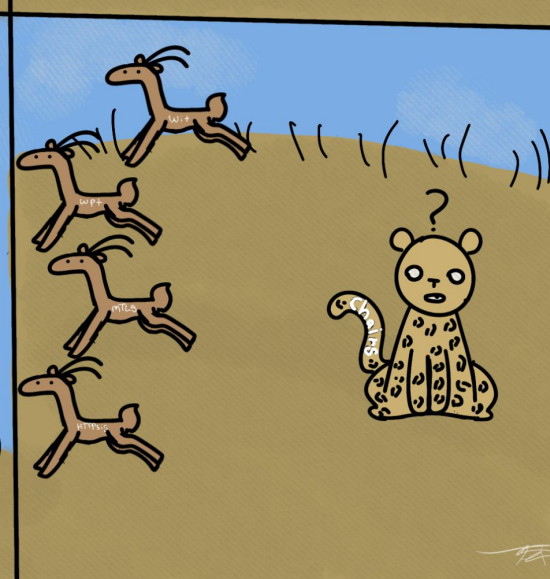
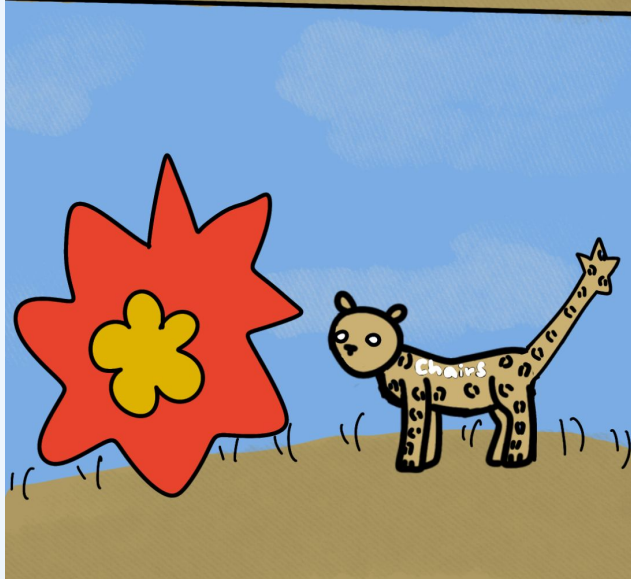
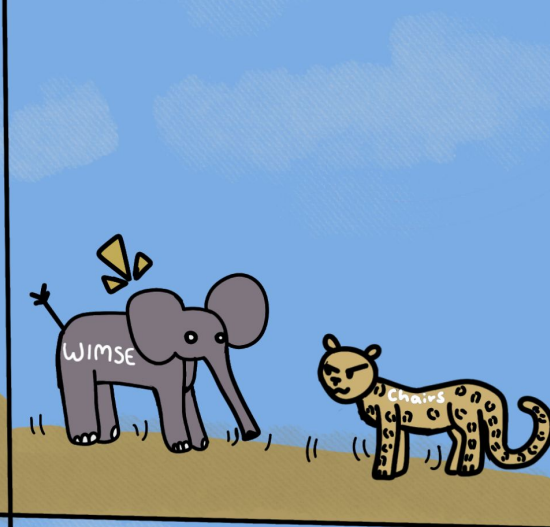
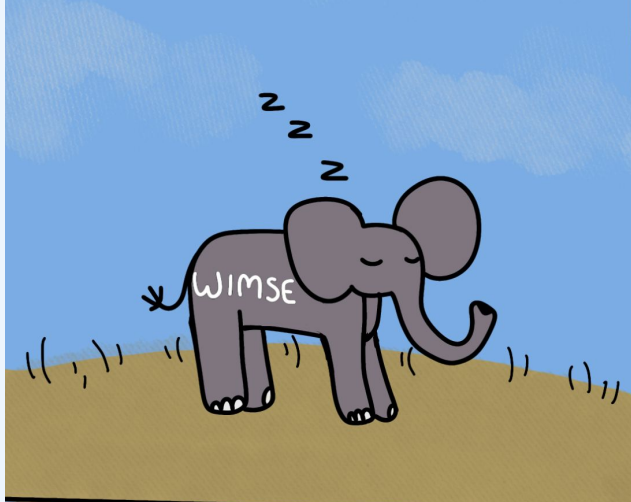


# Working Group Resources

- Mailing list: [wimse@ietf.org](mailto:wimse@ietf.org)
- GitHub: <https://github.com/ietf-wg-wimse>
- Website: <https://ietf-wg-wimse.github.io/>

# Current WG Documents

- [Architecture](#) -07
- [Workload Identifier](#) -02
- [Workload Identity Practices](#) -03 **LAST CALL**
- [Workload Credentials](#) -00 **NEW**
- [Workload to Workload Authentication with HTTP Signatures](#) -02 **NEW**
- [Workload Proof Token](#) -01 **NEW**
- [Workload Authentication Using Mutual TLS](#) -00 **NEW**



## Other Ongoing Work

So much proposed new work on the list!

It's great to see the excitement and the energy around WIMSE

***BUT...** If you want to work on something new, help finish what we have first*





<https://ietf-wg-wimse.github.io/>