

66th IETF Meeting NOC Report

Daniel Dulong
daniel.dulong@ericsson.com

Acknowledgements (1/2)

- Pierre Boucher (Ericsson)
- Chris Ellingsen (Ericsson)
- Pierre Guindon (Combat Networks)
- Wassim Haddad (Ericsson)
- Patrick Hamel (Combat Networks)
- Suresh Krishnan (Ericsson)
- Tania Leppert (Ericsson)
- Robert Mancuso (Combat Networks)
- André Mellul (Combat Networks)
- George Rigas NOC Leader & Architect (Combat Networks)
- Guillaume Touchette (Combat Networks)
- Olle Viktorsson (Ericsson IETF coordinator)

Acknowledgements (2/2)

- Dominique Conti (Palais des congrès)
- Réjean Roy (Palais des congrès)
- Partners and sponsors: Palais des congrès, RISQ, Dell
- Local volunteers: Gabriel-Ioan Ivascu, Paul Vital Hiol Mahop, Stéphane Ouellette, Désiré Oulaï, Meral Shirazipour, Li Jun Zhang (all from École Polytechnique de Montréal), Charles Bourgon
- Volunteers: Joel Jaeggli, Jim Martin, Chris Elliott, Karen O'Donoghue, Bill Fenner

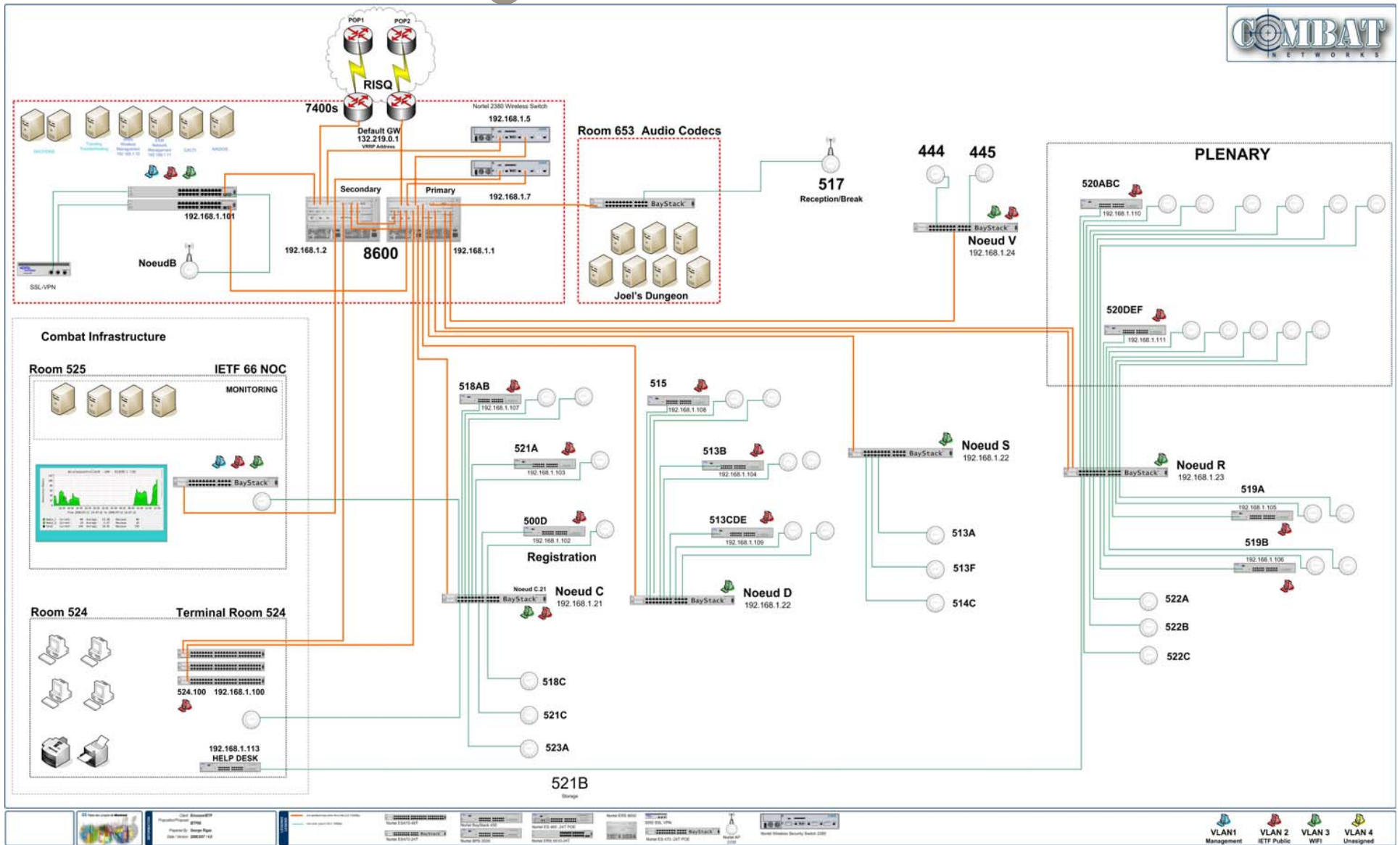
Internet Connectivity

- Provider : RISQ (www.risq.qc.ca) together with CANARIE (www.canarie.ca) for IPv6
- 2 separate and redundant links (Gb/s) over fibre going to redundant Cisco routers (2x Cisco 7401)
- Two different internet connections (POP's) for redundancy.

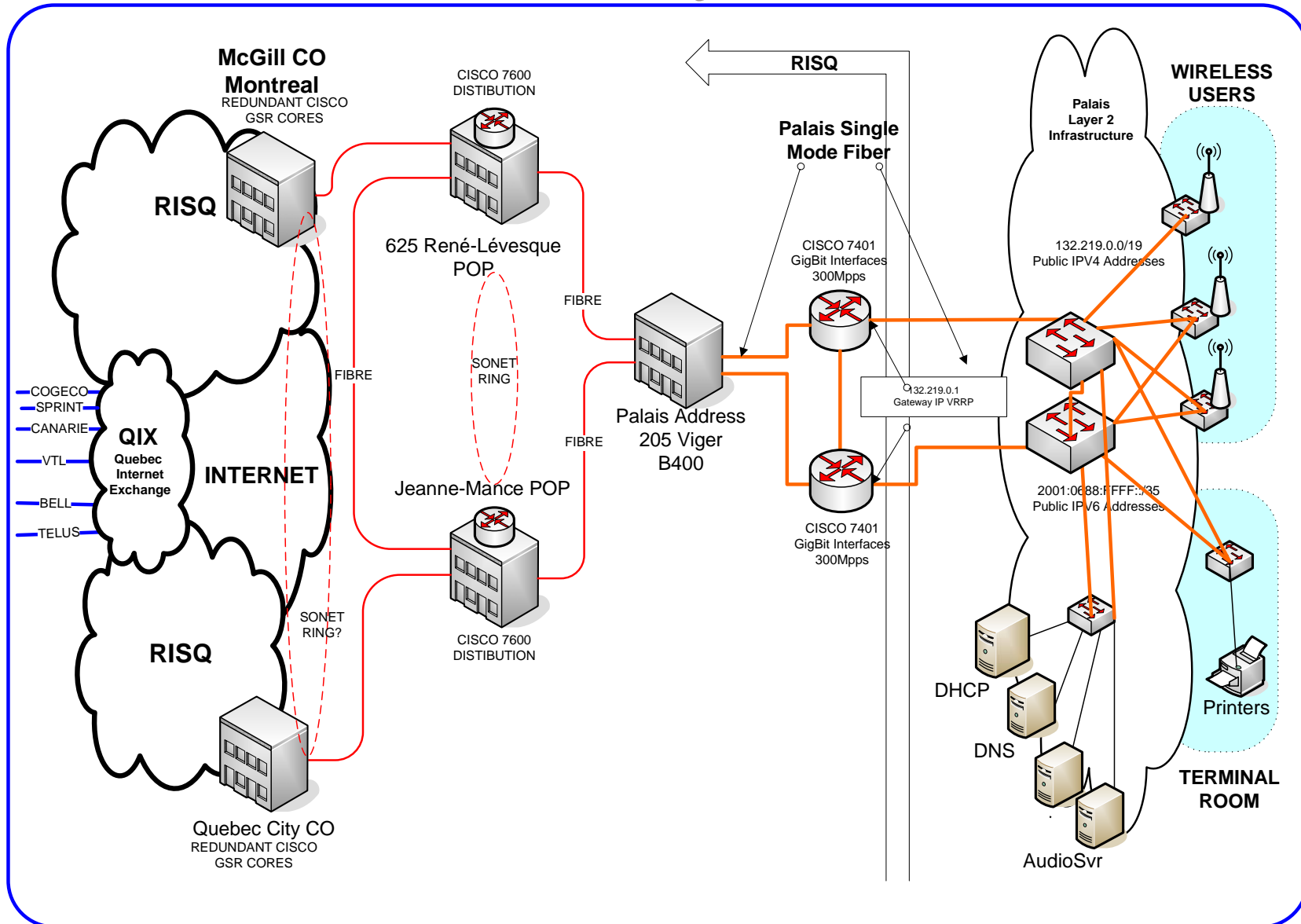
Network Infrastructure

- IPv4 (132.219.0.0 /19) and IPv6 (2001:0510:0102::/48) address space provided by RISQ
- 30 managed switches (redundant, fibre links)
- 38 Access Points (Trapeze/Nortel), 802.11a and b
- POE used with all AP's for ease of deployment/Management
- Two SSID's (open): "IETF66A", "IETF66B"
- 3 VLAN's
- Two DHCP servers (HA using failover) and two caching DNS servers on Linux (Ubuntu, Pentium 4)
- Internet café on boat: 802.11a/b (SSID IETF66_Cruise) with HSDPA for Internet connectivity with Rogers.

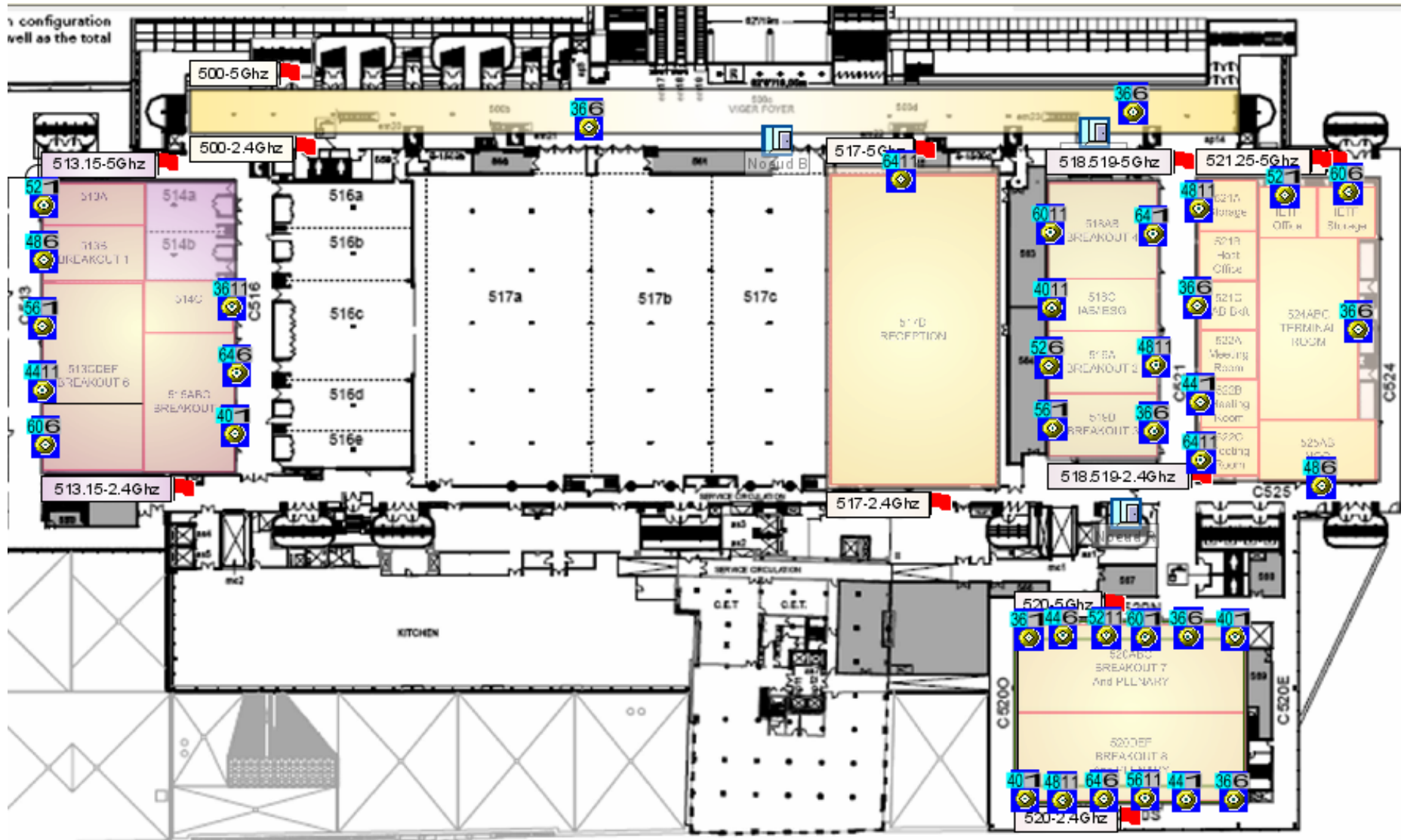
Network Diagram



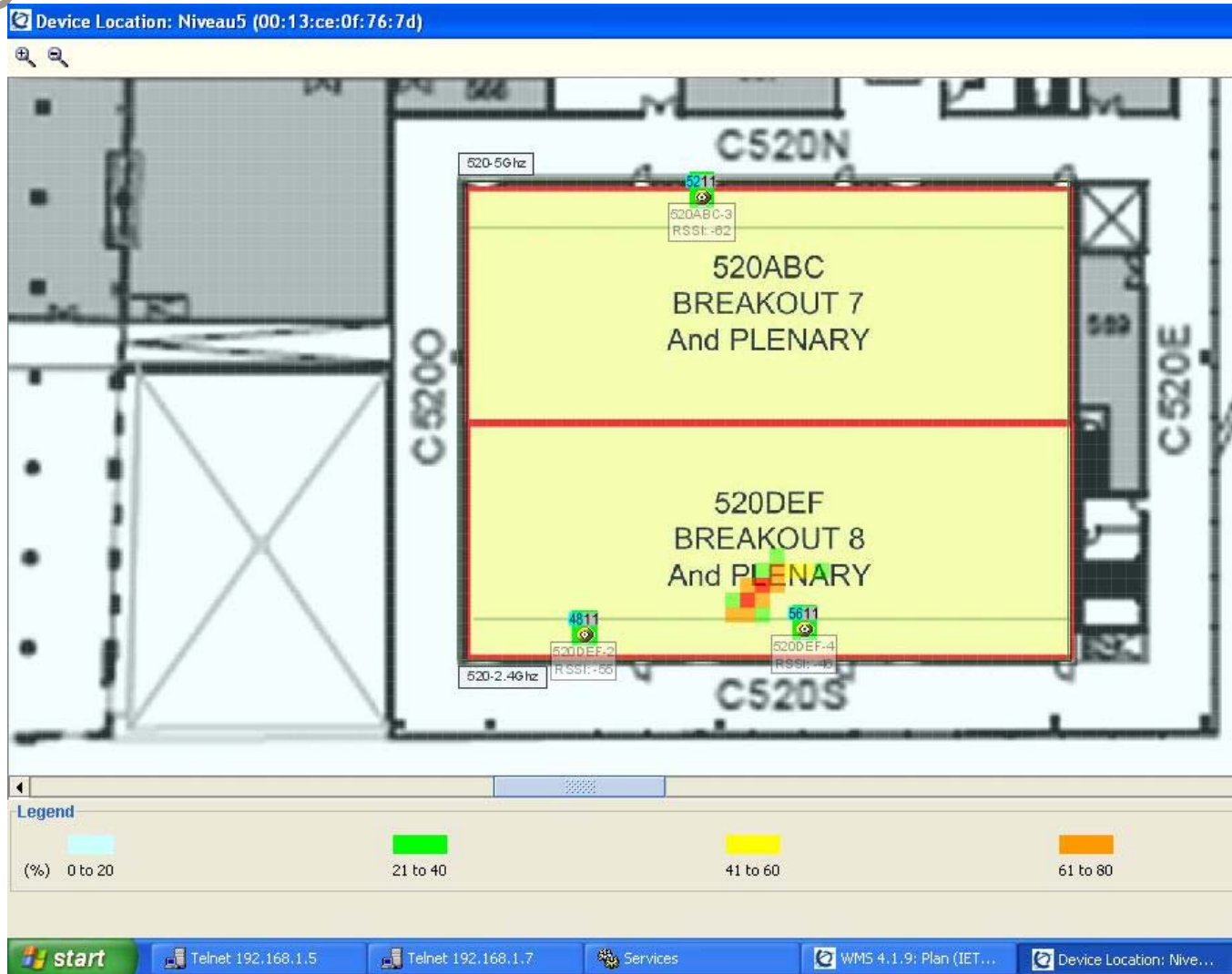
Internet Redundancy



AP Positions and Channels

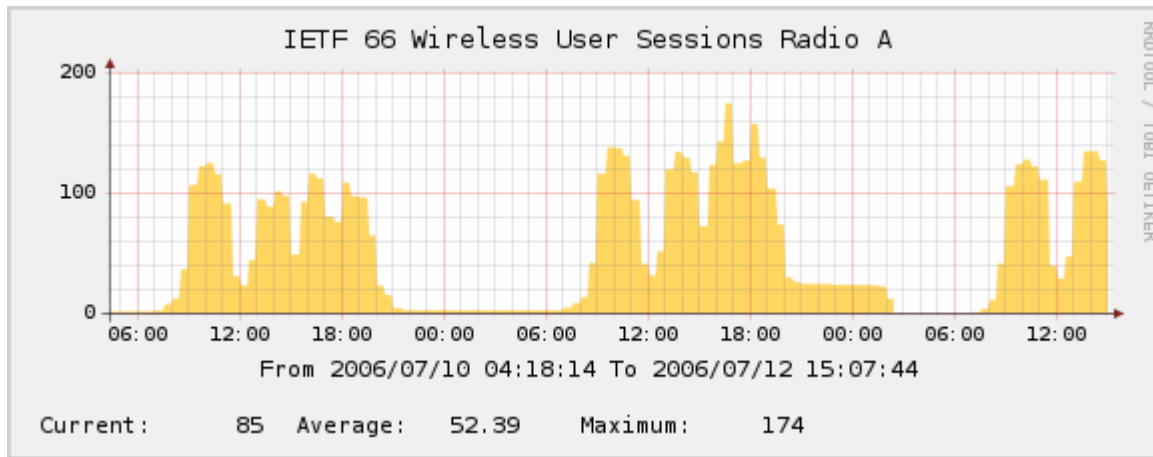


Rogue Detection and Localization



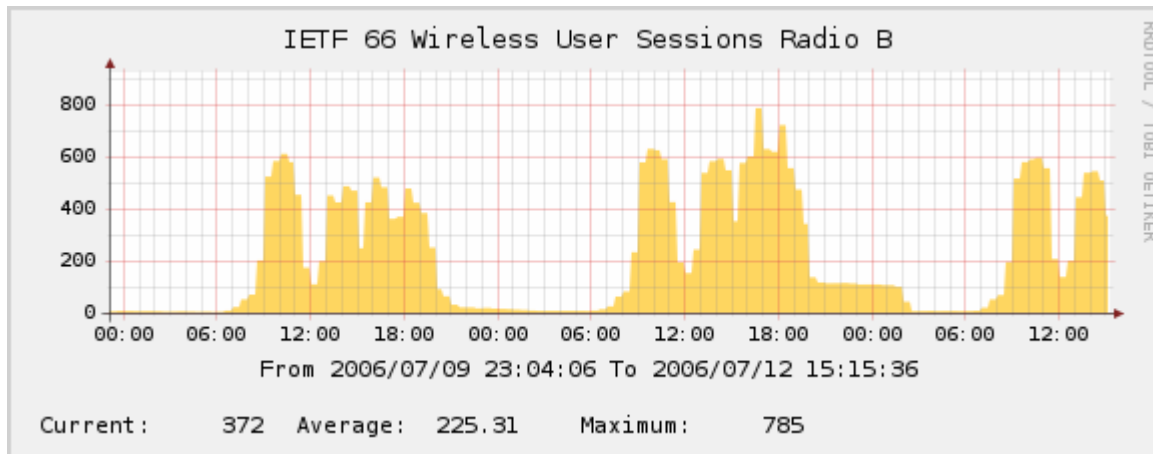
Advertising "IETF66B" SSID

Associations – 802.11a vs. b



MAXIMUM

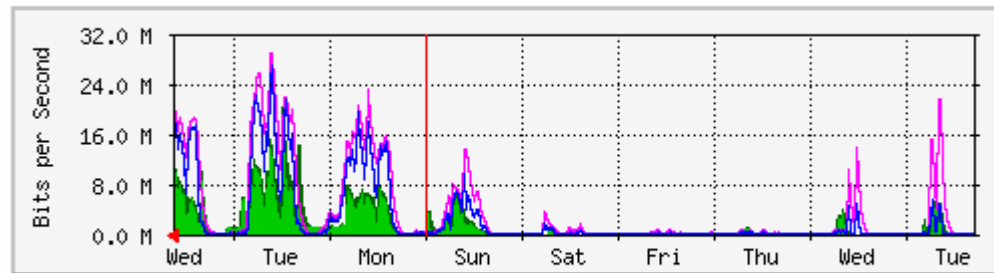
174 802.11a



610 802.11b

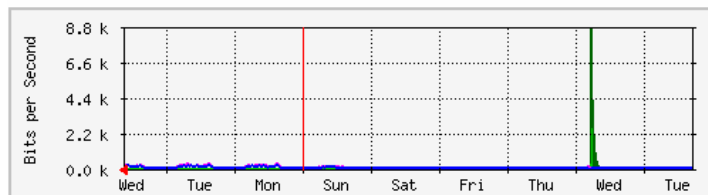
MRTG stats – IPv4 versus IPV6

Graphique hebdomadaire (sur 30 minutes : Moyenne)



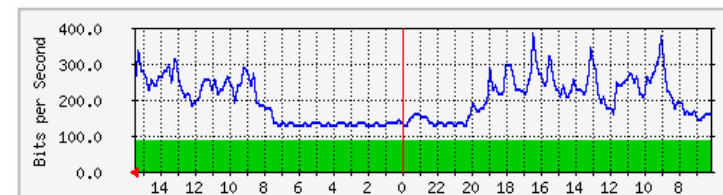
Max **Entrée**:20.8 Mb/s (2.1%) Moyenne **Entrée**:1440.7 kb/s (0.1%) Actuel **Entrée**:10.1 Mb/s (1.0%)
 Max **Sortie**:29.1 Mb/s (2.9%) Moyenne **Sortie**:2652.3 kb/s (0.3%) Actuel **Sortie**:17.9 Mb/s (1.8%)

Graphique hebdomadaire (sur 30 minutes : Moyenne)



Max **Entrée**:2760.0 b/s (97.3%) Moyenne **Entrée**: 88.0 b/s (1.0%) Actuel **Entrée**: 88.0 b/s (1.0%)
 Max **Sortie**: 400.0 b/s (4.4%) Moyenne **Sortie**:152.0 b/s (1.7%) Actuel **Sortie**:248.0 b/s (2.8%)

Graphique quotidien (sur 5 minutes : Moyenne)



Max **Entrée**: 88.0 b/s (1.0%) Moyenne **Entrée**: 88.0 b/s (1.0%) Actuel **Entrée**: 88.0 b/s (1.0%)
 Max **Sortie**:384.0 b/s (4.3%) Moyenne **Sortie**:192.0 b/s (2.1%) Actuel **Sortie**:256.0 b/s (2.8%)

ERICSSON 

TAKING YOU FORWARD