

Usage of Host Generating Interface Identifier in DHCPv6

draft-xia-dhc-host-gen-id-01.txt

Frank Xia
Behcet Sarikaya

March 2009

Problem Statement

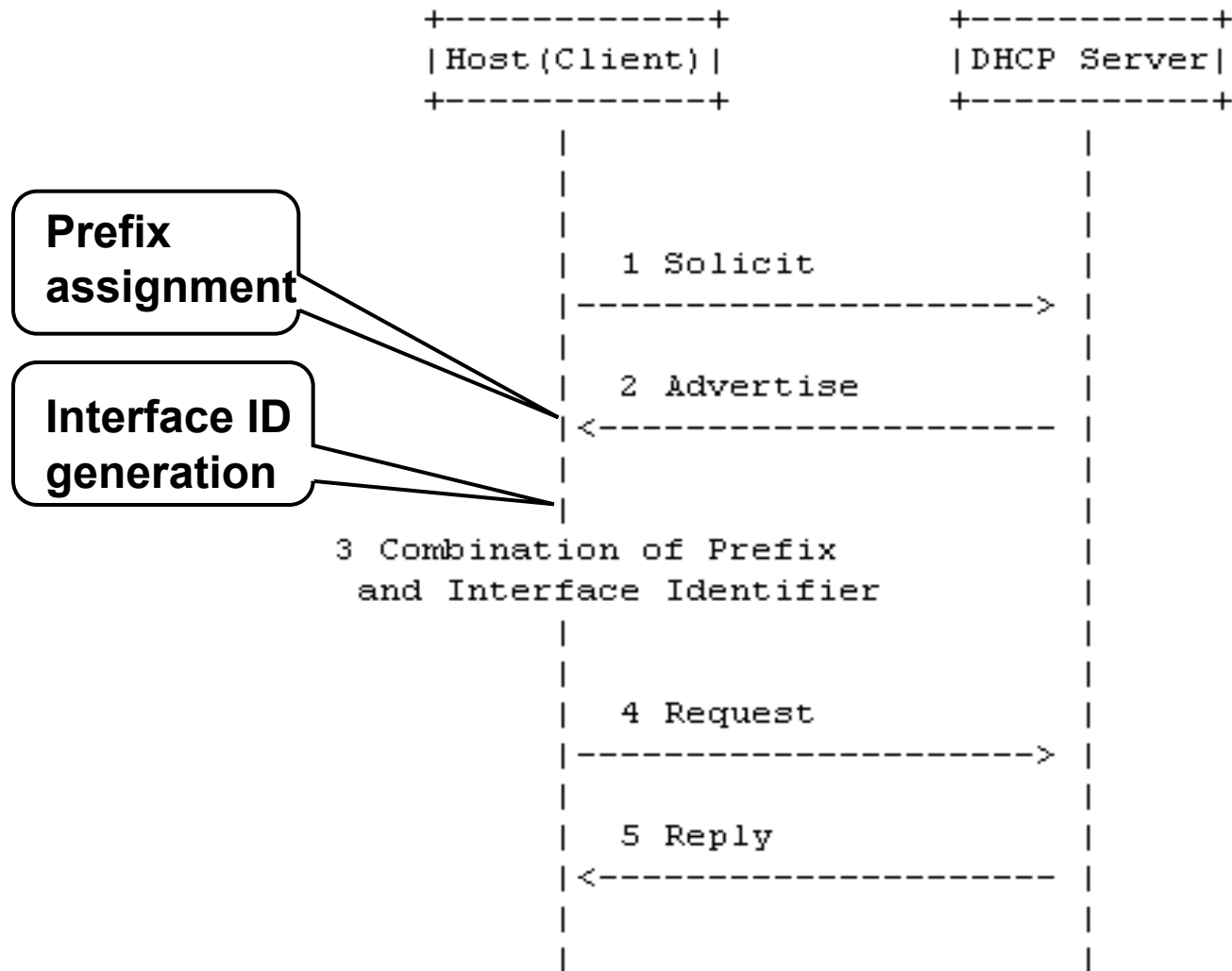
- **The configuration of IPv6 address of a host includes two parts: a prefix and an interface ID**
- **The prefix is managed by a DHCP server**
- **The interface Identifier is generated by the host itself**

E.g. The interface identifier of a CGA (Cryptographically Generated Address) could only be generated based on a public key hold by the host

Problem Statement (cont.)

- **No existing DHCP procedure is suitable for this scenario**
- **DHCPv6(RFC3315) assumes that a DHCP server is responsible for the assignment of an *integral* address which includes prefix and interface identifier parts.**

Solution – Separation of prefix assignment and interface ID generation



Solution (cont.)

- **New option for Prefix Assignment**

Identity Association for Prefix Assignment Option

- **Relevancy to draft-droms-dhc-dhcpv6-default-router-00**

This draft also describes the requirement for a host to request a prefix from a DHCP server

Adopted as a WG draft?

Thank you