

One-Time Extended Community Based ORF

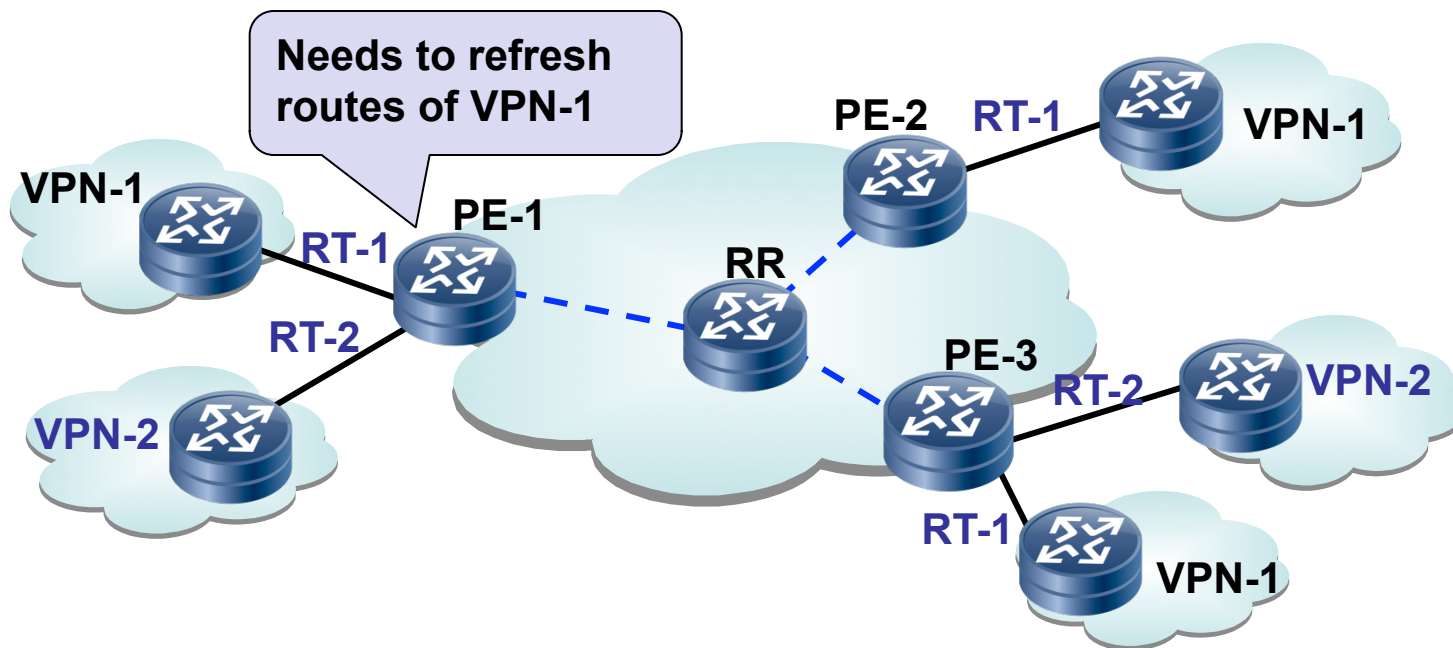
draft-dong-idr-one-time-ext-community-orf-00

J. Dong, Q. Zeng, J. Heitz, K. Patel, R. Shakir

IETF80 IDR Mar. 2011 Prague

Motivation

- In some scenarios operators needs to retrieve routes with specific extended communities
 - Changes of local policy which impacts routes with specific extended communities
 - Route recovery for specific VPN instance

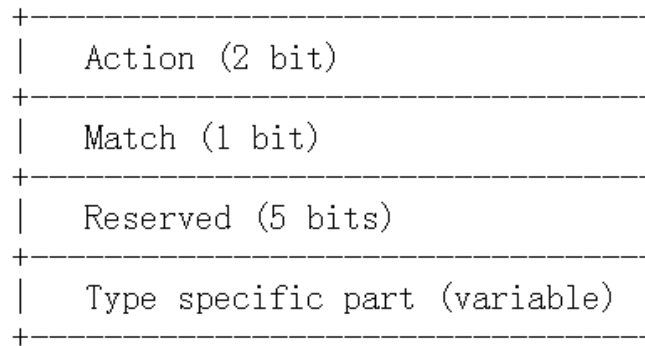


Motivation (cont.)

- Route Refresh [RFC2918] may not be suitable
 - Whole Adj-RIB-Out re-advertisement
 - Unnecessary route processing overhead
 - Unnecessary bandwidth consumption
- RT Constrain [RFC4684] may not be suitable
 - Will not send updates unless RT is changed
 - Sometimes re-advertisement is needed with RT unchanged
- A new operational tool is needed

One-Time Extended Community ORF

- A new ORF type used to solicit one-time re-advertisement of routes with specific extended communities
 - Only used as one-time filters and MUST not change any previously installed ORF entry



- **Action**: ignored on receipt (no impact on peers' ORFs)
 - **Match**: ignored on receipt (same as in [ext-comm-orf])
 - **Type specific part**: a single extended community (8 octets)
- One-Time ORFs may be used in combination with enhanced RR for consistency validation of a subset of RIB

Next Steps

- Solicit comments & feedbacks
- Revise the draft