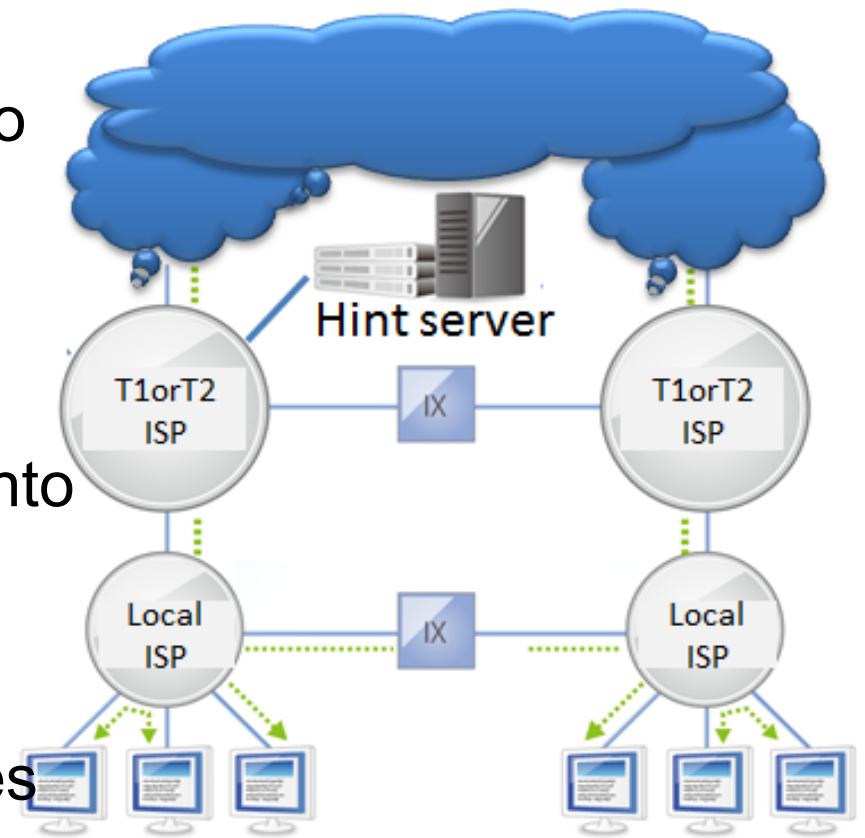


Update:
Report of ALTO-Like
Experiments in Japan
draft-kamei-p2p-experiments-japan-05

Satoshi Kamei
Tsuyoshi Momose
Takeshi Inoue

Overview

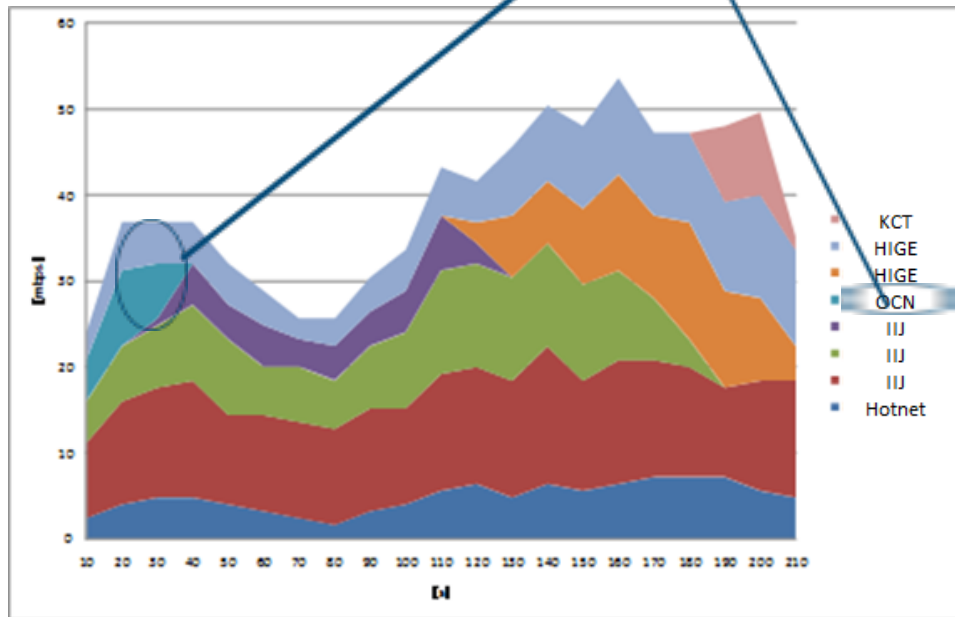
- An experiment to reduce P2P traffic effectively held in Japan from 2008 to 2010
- Cooperation with 20+ ISPs, 6 P2P application vendors and 10+ content providers
 - Geographic information is taken into consideration for inter ISP.
- 2 technologies are introduced:
 - Hint Sever
 - suggest appropriate peer nodes
 - Dummy nodes
 - Measure P2P traffic without modification P2P applications



Overview

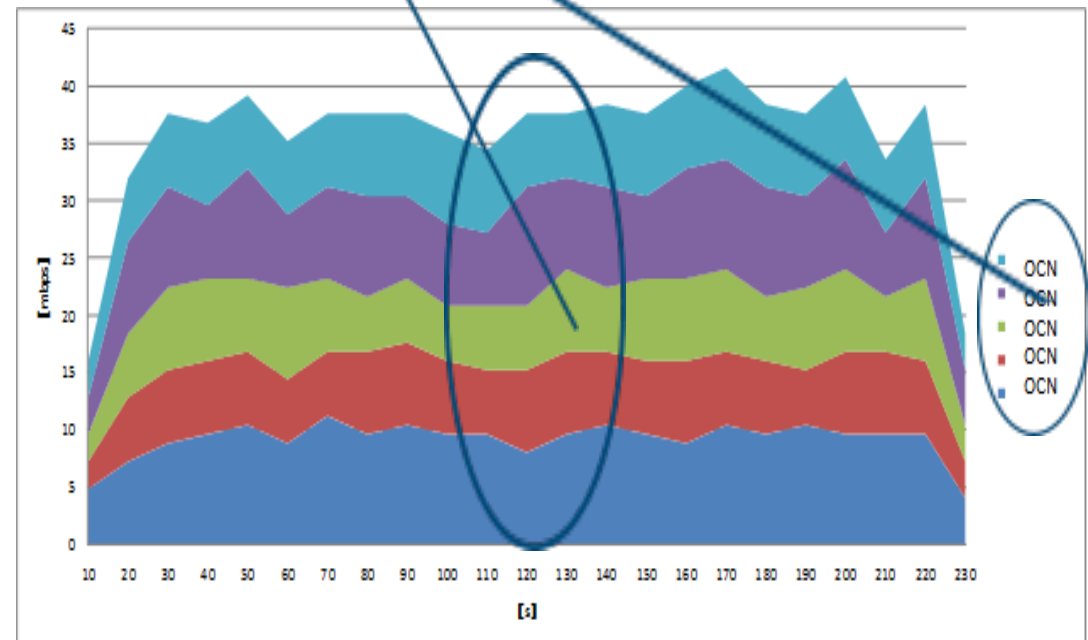
- Confirmed ALTO-like approach is effective
 - inter-ISP
 - multi P2P applications

select same ISPs



w/o Hint Server

select same ISPs



w/ Hint Server

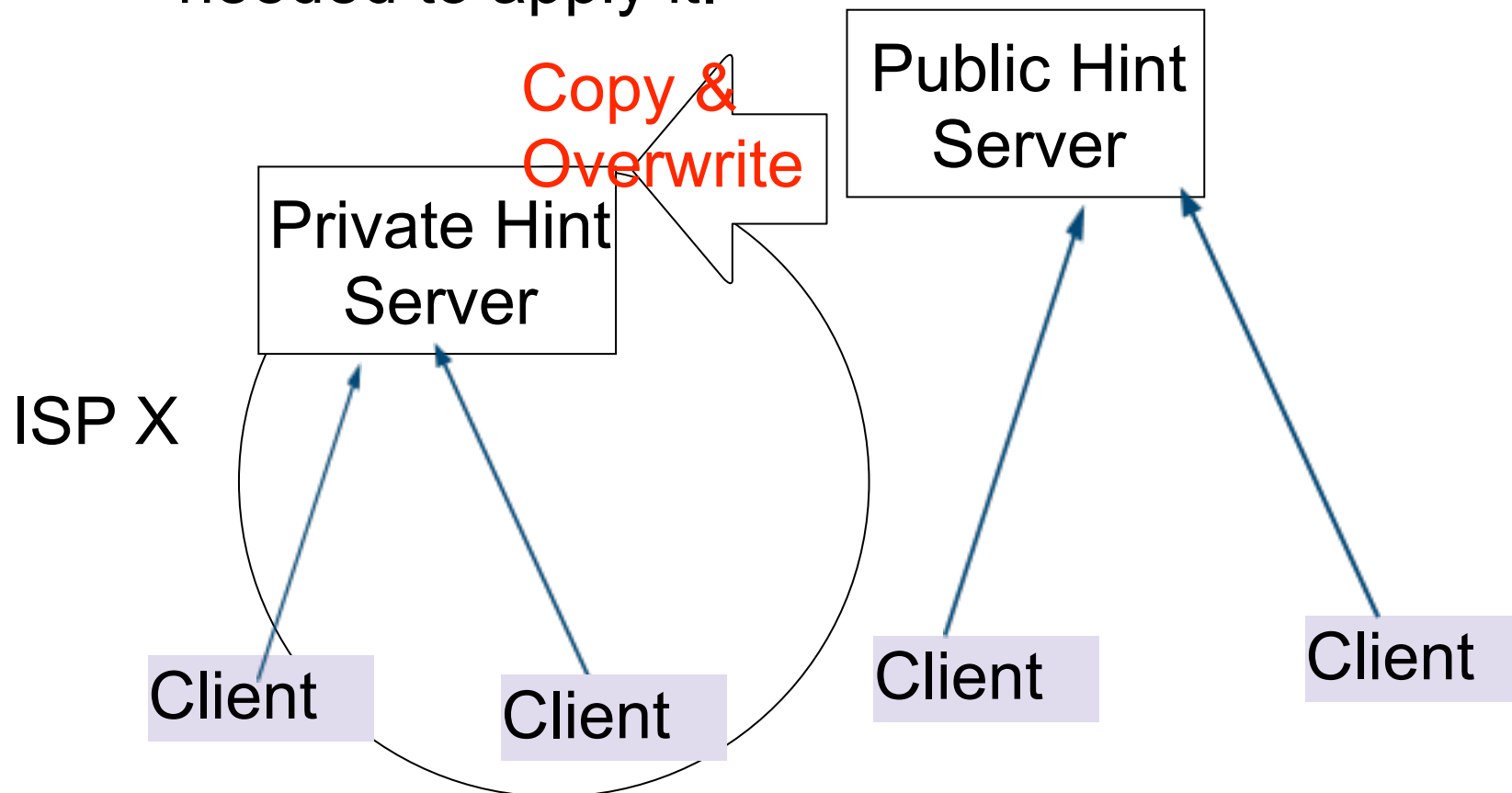
from P2P client in OCN

Changes in this version (1)

- Contents is almost same as the previous version for the part of description of experiment as of 2008
 - some document structure and sentences were brushed up
- Added the current experiment status
 - The experiment continues until FY2010 (Mar 2011)
 - The protocol is replaced with alto.(*-alto-protocol-07)
 - mainly use "Endpoint Cost Service"
 - all other "required" services for compatibility.
- Analysis is more precisely
 - Clarify operation issues for hierarchical ALTO servers, and importance for measurement.

Changes in this version (2)

- ALTO servers are put both private and public site and used simultaneously in this experiment.
 - There were no modifications in alto specification are needed to apply it.



Changes in this version (3)

- The methods to generate ALTO databases were changed
 - 2008-2009 BGP data + GeoIP
 - 2010 add 2 more major ISP's BGP data

