

Motivation for developing SA46T

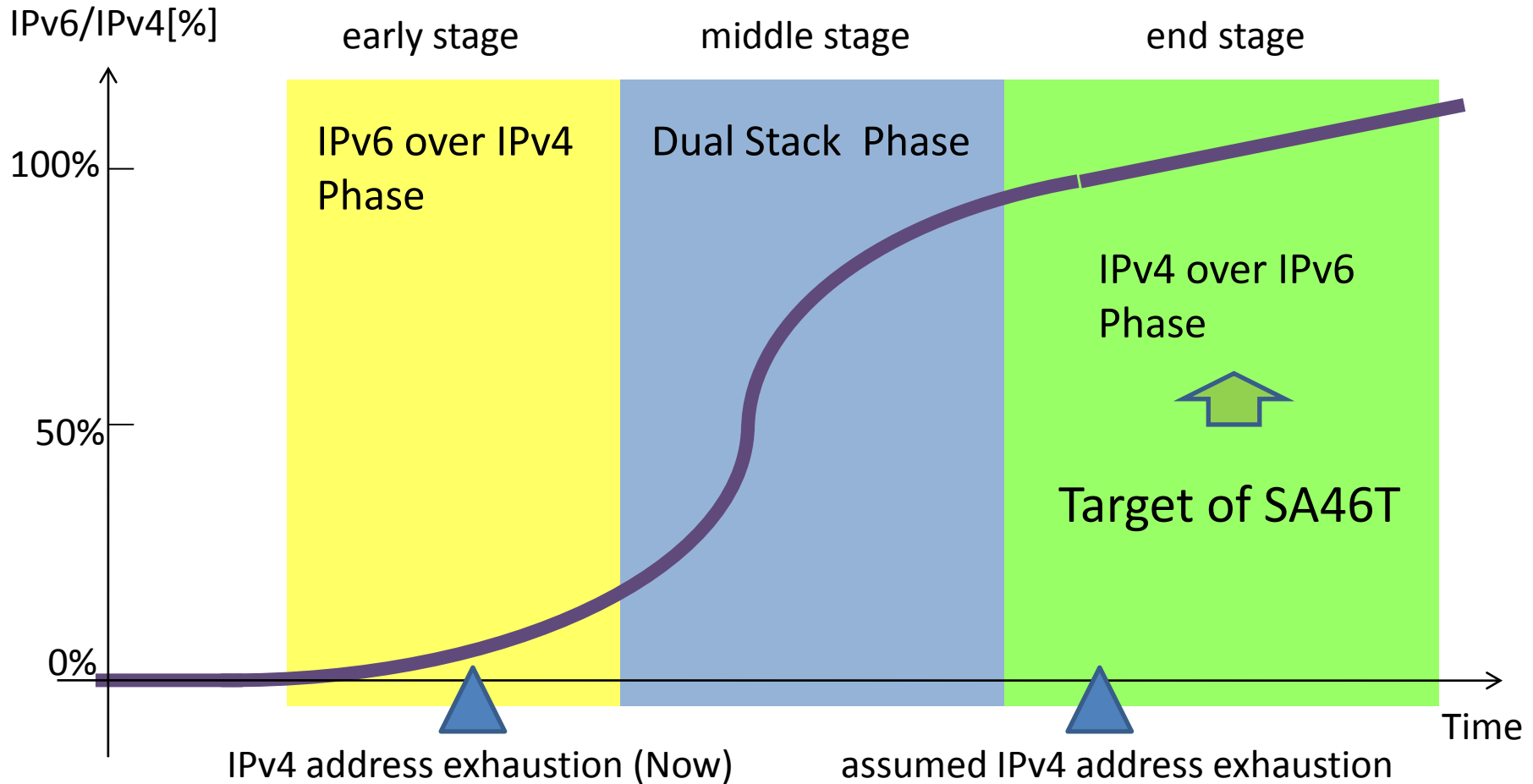
Naoki Matsuhira

matsuhira@jp.fujitsu.com

Fujitsu Limited

81st IETF Quebec, July 2011

Image of IPv4 to IPv6 transition



Time when SA46T contributes has advanced.

Motivation for SA46T

- Can install into existing network
 - any IPv4 address, non dependency
- Less tunnel configuration
 - N , not N^2
- Simple install strategy
 - edge based solution
- Can treat both IPv4 Global and IPv4 Privates
 - plane ID
- Can install into various networks
 - access, backbone, enterprise, datacenter

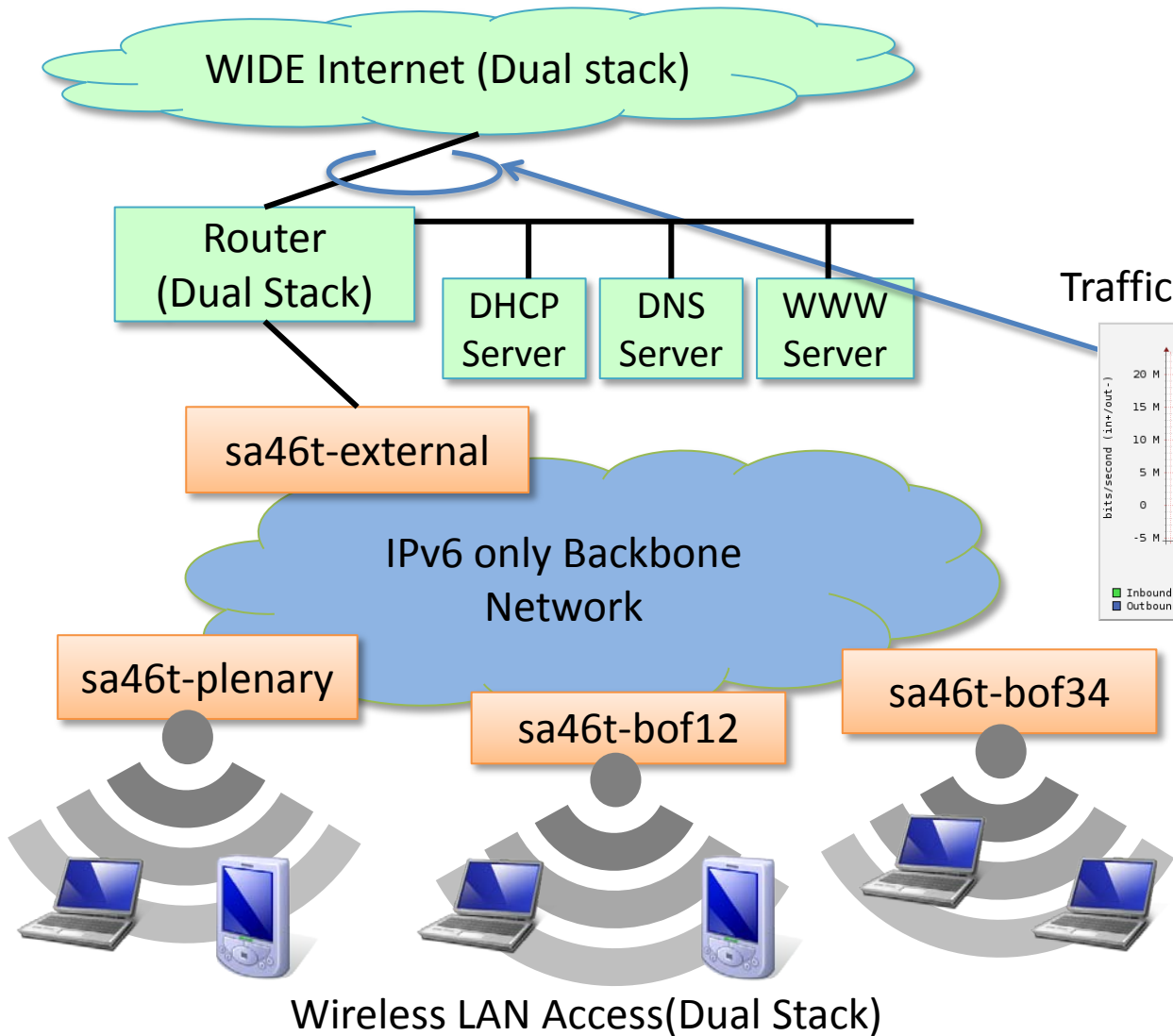
position of SA46T

- One of tunneling technology
 - GRE, IP in IP, etc
 - but focus only on IPv4 over IPv6
- Can combine with NAT
 - CGN with SA46T, may tunnel option of DS-Lite
 - CPE NAT with SA46T-AS, A+P capability
 - off course, non NAT solution may possible
- General purpose of IPv4 over IPv6 Tunneling
 - can apply access network, backbone network, enterprise network, data center network
 - plane ID is unique function for VPN like service

Consideration

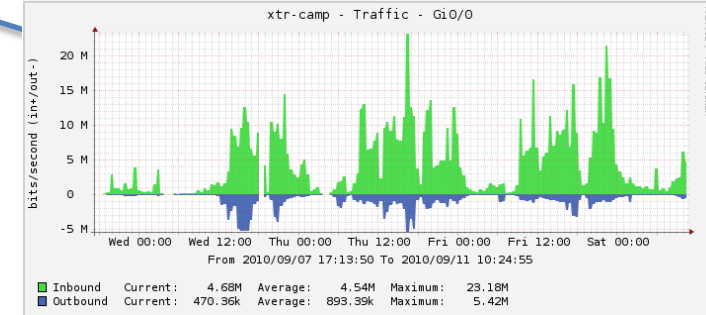
- SA46T is fundamental tunneling function
 - simple protocol / function specification
 - Can combine other technologies
- Many application may possible
- I believe that SA46T is useful for a smooth transition to IPv6 and the continuance of IPv4 in the near future.
 - The dependency between network transition and host transition can be separated.
- I believe that SA46T has the qualification of the IETF standard.

sa46t experiments at WIDE camp



Overview

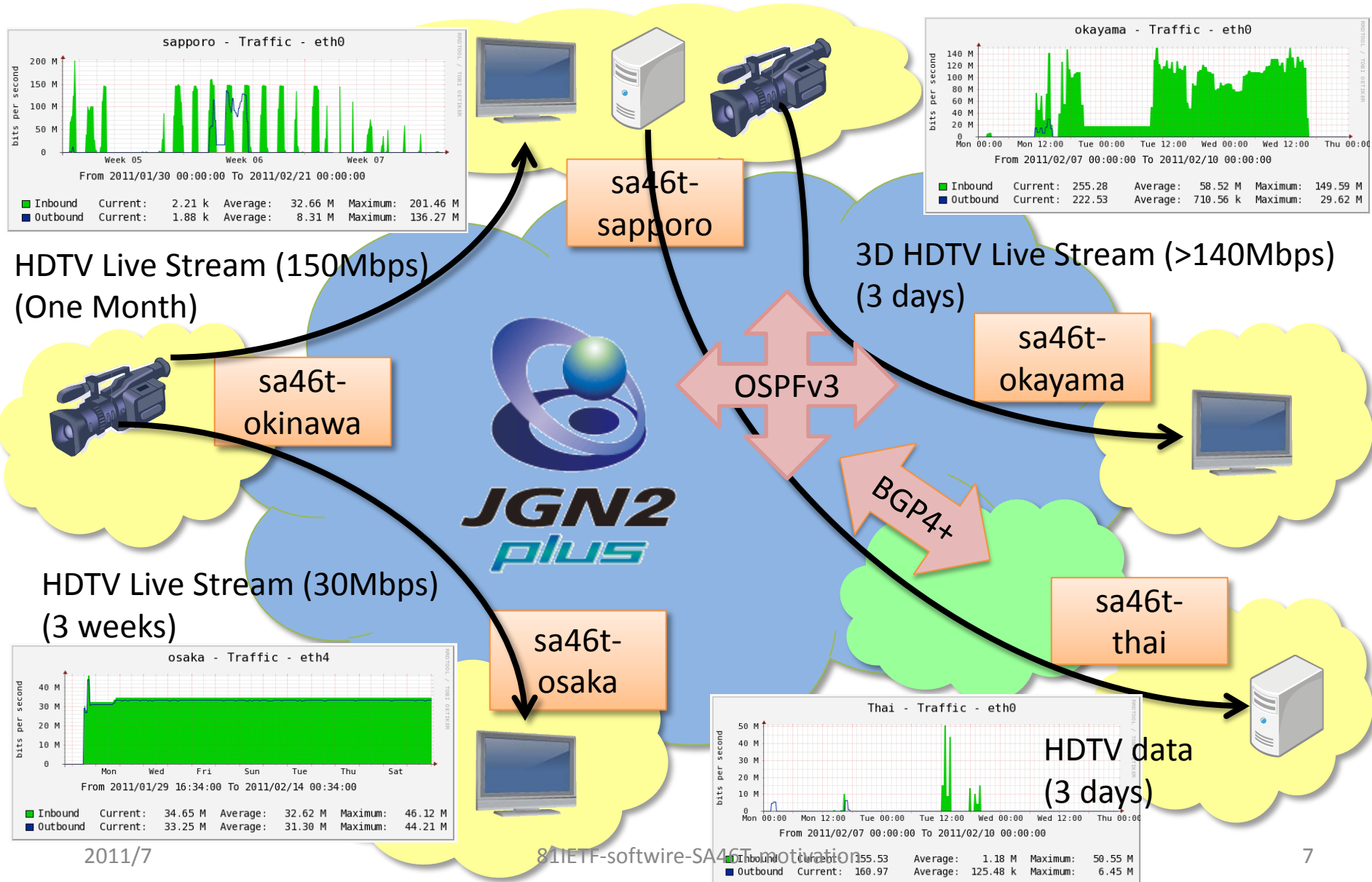
- 4.5 days in September 2010
- provide both IPv4 & IPv6
- Using single IPv4 plane
- Clients Join via Wireless LAN



Results

- 191 people attended
- 275 clients joined
- sa46t Work fine, very stable
- >230 million IPv4 packets encaped by sa46t

sa46t experiments at NICT JGN2Plus Testbed



SA46T Demo at Interop 2011 Tokyo (in this June)

