

VLAN Load Balancing

draft-zhang-trill-vlan-assign-01

Mingui Zhang, Dacheng Zhang

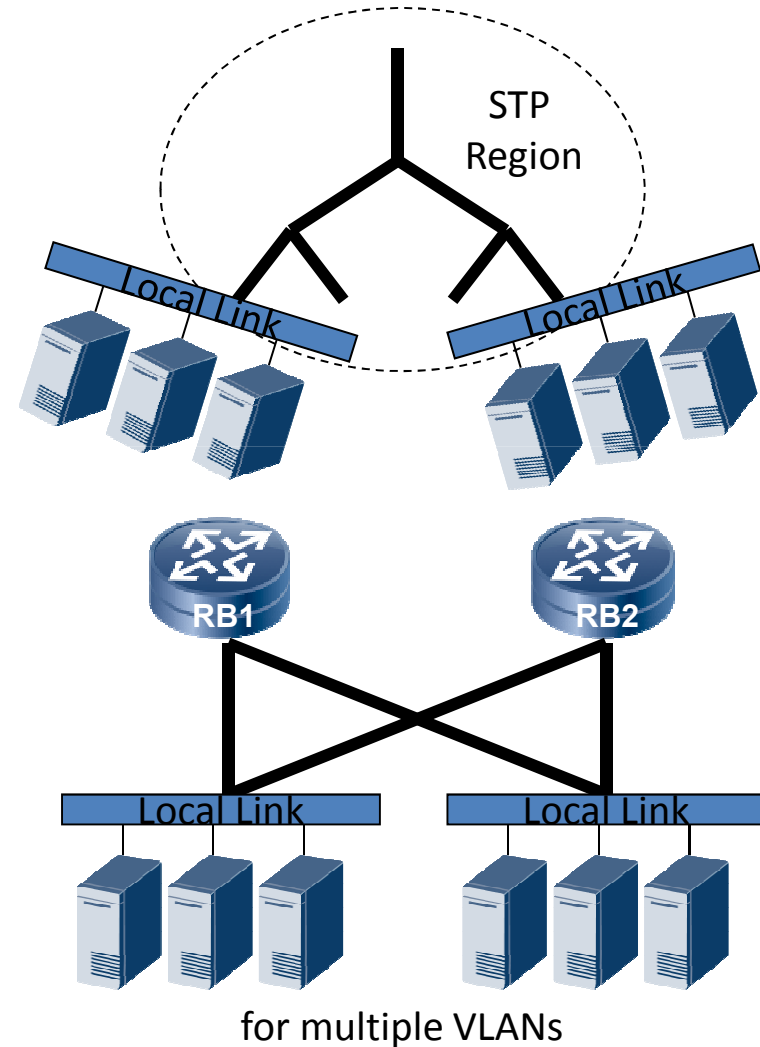
zhangmingui@huawei.com

Draft Updates

- 00 version talks about adaptive VLAN assignment for Inter-VLAN load & MAC Balancing
- 01 version adds the VLAN load balancing for a single VLAN. Link aggregation technique is addressed in the document.

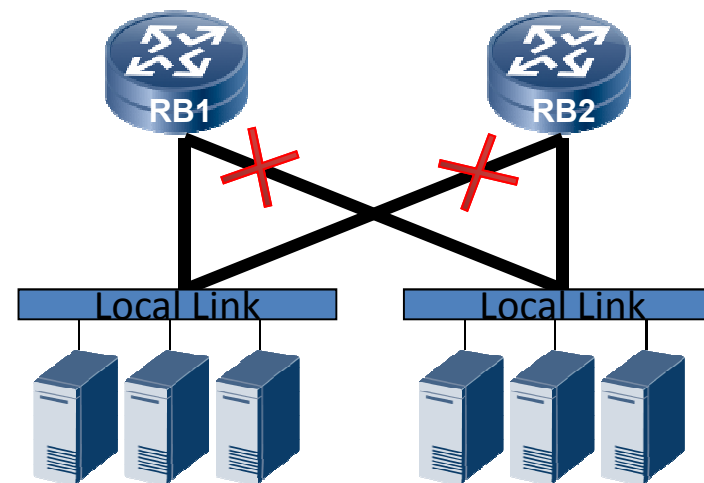
Multiple Points Attachment

- Unlike STP, TRILL allows multi-access to an local link
- MPA is common in RBridge campuses
 - High east-west capacity
 - Flexibility



Single AF: Another Form of “Block”

- However, for loop avoidance, TRILL allows only a single Appointed Forwarder for one VLAN on a LAN link.
- Single AF means single ingress & single egress.



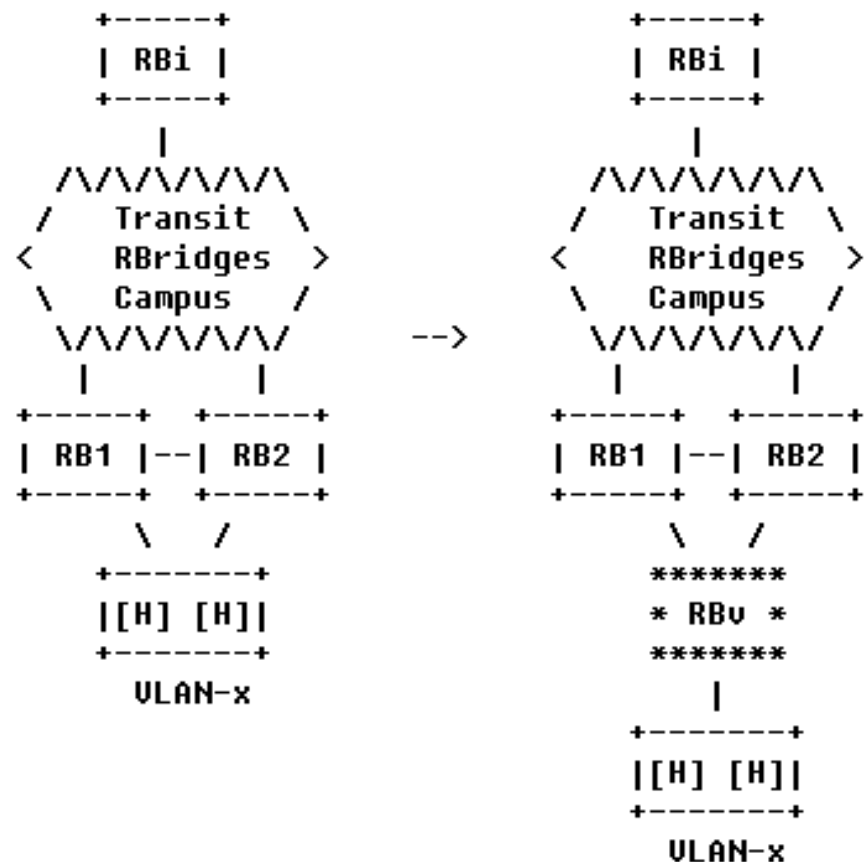
for one VLAN

Shortcomings of “Single Forwarder”

- Reduces the access bandwidth
- Easily leads to path polarization
- The access of the LAN link to RB campus is not resilient to failures.
- Single forwarder mechanism can partition a campus [TRILL base protocol].

Link Aggregation

- Two RBridges use one nickname to ingress/egress frames.
- They can forward packets for VLAN-x at the same time.



Load Balance through Hashing

- Hashing based on the header of frames
 - E.g., source MAC
- Per flow load balance avoids reordering frames.

Frame Processing

- Unicast
 - Ingress: hashing the frame onto one of the bundling members; receiver RBridge delivers the frame directly
 - Egress: receiver RBridge delivers the frame directly
- Multicast (assign to one member using hashing)
 - Ingress/Egress: if assigned, send it; if not assigned and unknown unicast, send it to peer as a unicast frame; if not assigned and broadcast/multicast, drop it
- MAC learning
 - Synchronization between peers
- Individual link failure
 - Ingress: use the peer link
 - Egress:
 - Unicast: send it to peer who will deliver the frame
 - Multicast: send it via an reserved outer VLAN as unicast, the peer will deliver the frame coming from this reserved VLAN without considering the hashing function

Instant Redirection for Link Failures

- It improves the resilience in the face of failures of individual links.
- Since reach-ability is not affected, MAC addresses are not withdrawn from the virtual link.

Thanks!