

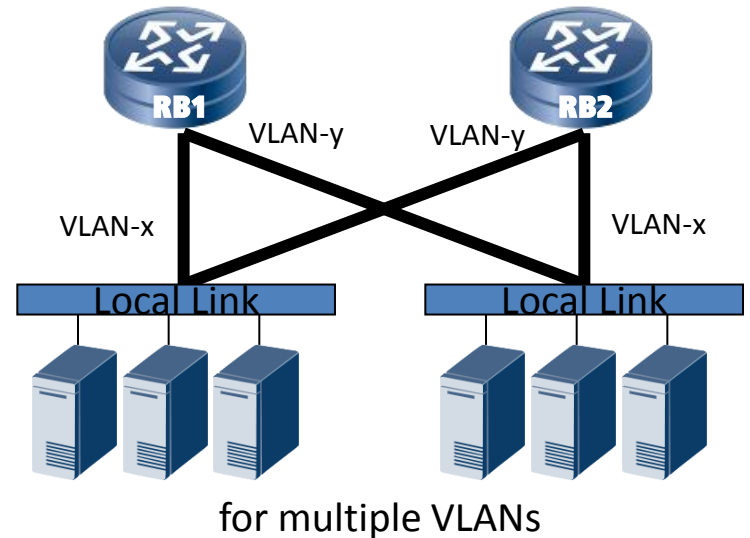
Adaptive VLAN Assignment for Data Center RBridges

draft-zhang-trill-vlan-assign-02

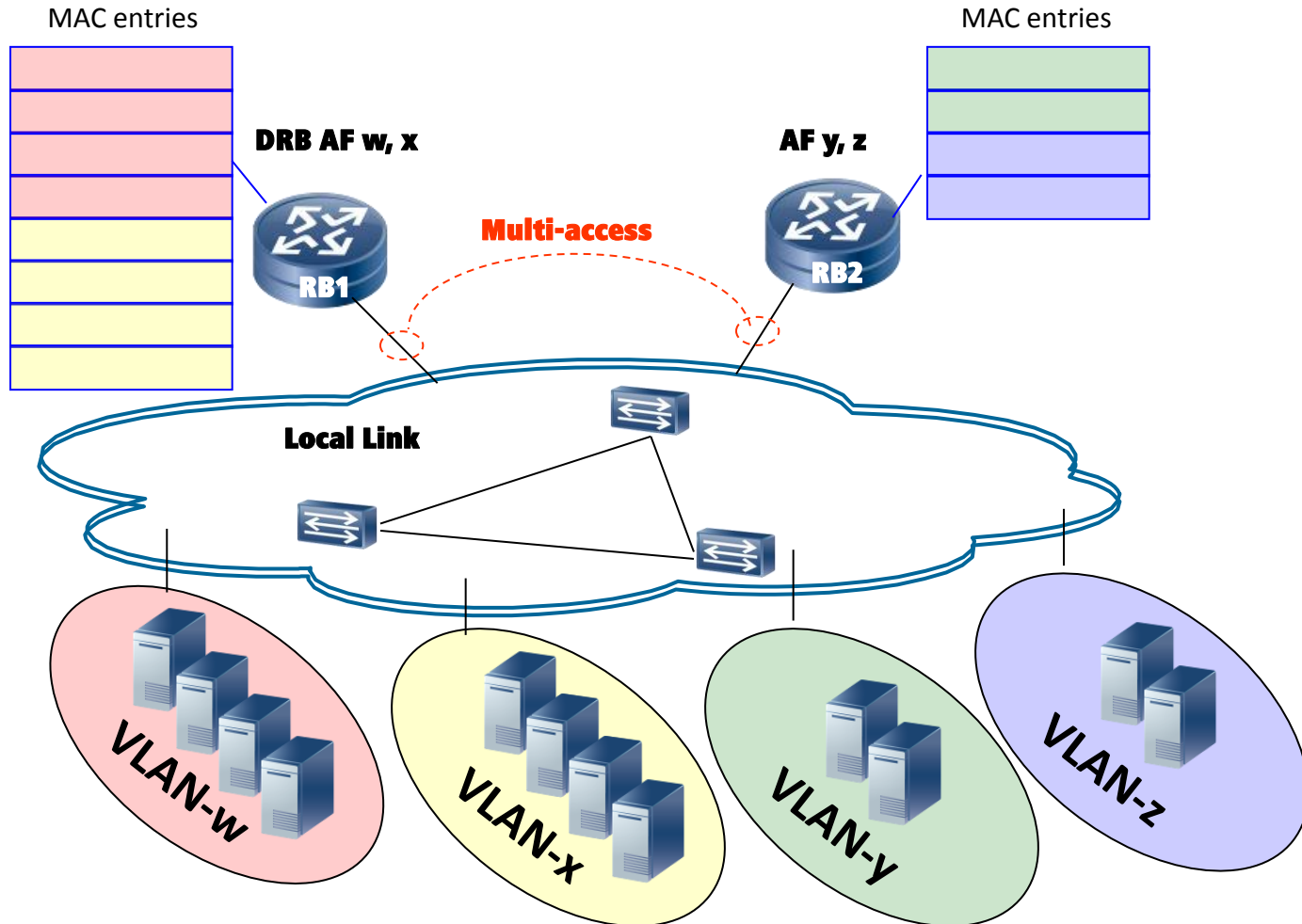
Mingui Zhang, Dacheng Zhang
zhangmingui@huawei.com

Multi-access Link

- Several RBridges can forward frames simultaneously for a multi-access link.
- It offers high east-west capacity to RBridge campus.

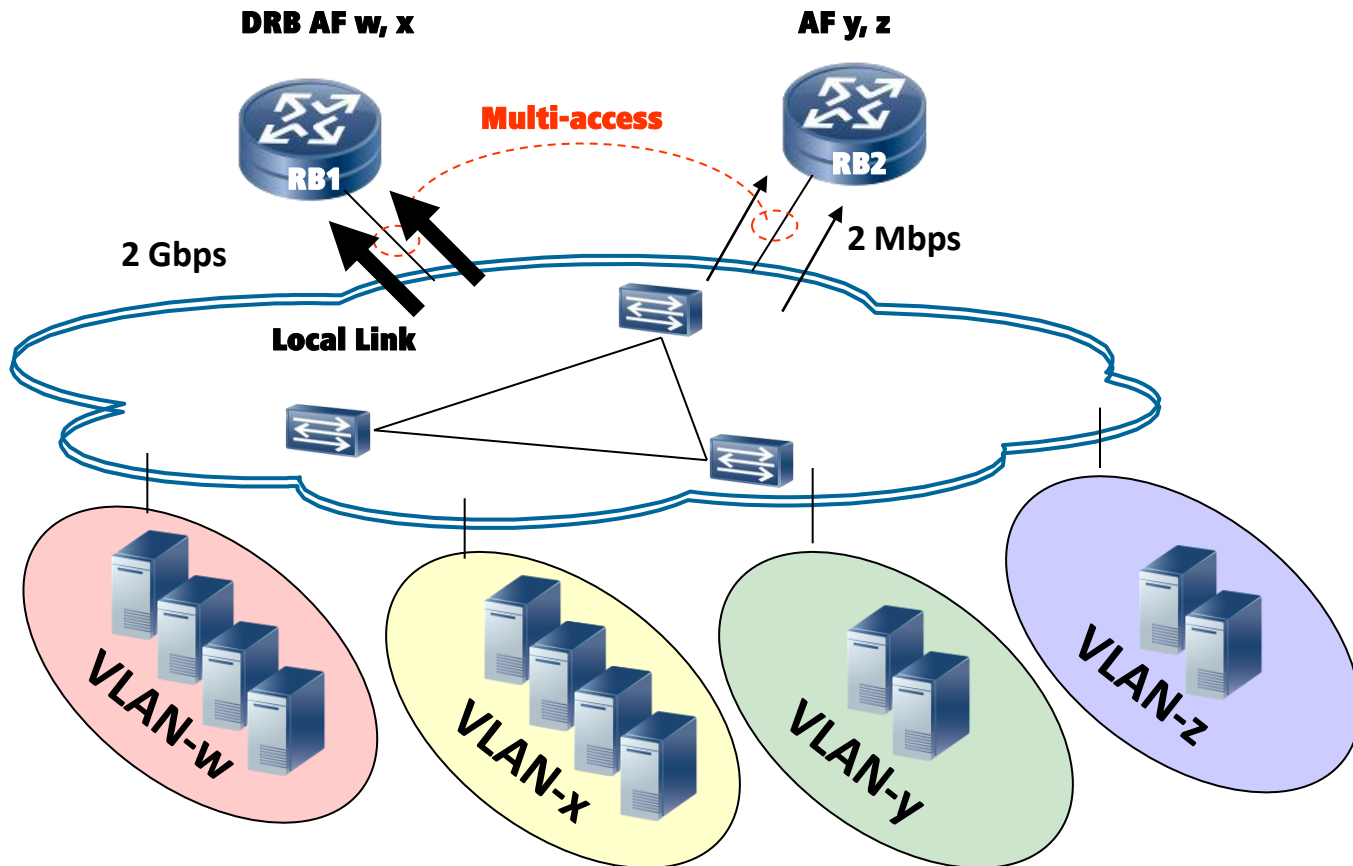


Imbalanced MAC Tables



**Balanced #VLAN doesn't mean balanced MAC entries.
The MAC table of RB1 is longer than that of RB2.**

Imbalanced Traffic Load



Balanced #VLAN doesn't mean balanced traffic load
The traffic load going through RB1 is heavier than that of RB2

AF Feedbacks to DRB

- All appointed forwarders advertise the usage of MAC table and bandwidth in LSPs to their DRBs.
- The usage of the MAC table and the utilization of bandwidth of this appointed forwarder is calculated on the DRB.

Adaptive Assignment

- The DRB can choose an appointed forwarder for the local link based on Least Usage/Utilization First (LUF) policy.
- The feedback can be stored in the MIB. Operators can therefore easily pinpoint the hot spots of TRILL edge.

Thanks!