

Towards Extending the TCP Option Space

Michio Honda, Keio University

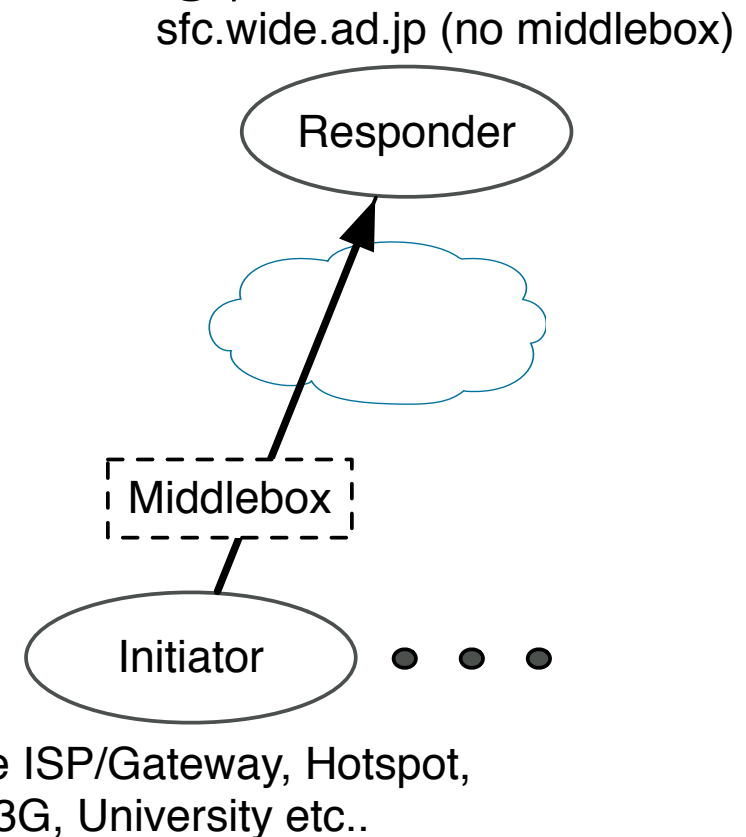
TSVWG in 82nd IETF meeting
14. Nov. 2011, Taipei, Taiwan

Motivation

- TCP option space is scarce! – 40 Byte limitation
 - e.g. How to use Multipath TCP and TcpCrypt simultaneously?
 - Some options are mostly reserved for regular options (e.g., TIMESTAMP and SACK blocks)
- Option 1:
 - Use of a part of payload
 - Specify the actual data offset in the regular TCP option space
- Option 2:
 - Reuse existing options (e.g., TIMESTAMP)
 - Embed control data in the TIMESTAMP value

Payload vs. Timestamp

- We measured middlebox behaviors in 142 paths and some NICs in early 2011
- Control both ends of the measuring paths
 - You and we run the initiator tool (acts as TCP client) in many access networks



Option 1 (Use of Payload) is Bad Idea

- Retransmission with different payload (i.e., different options in the extended option space) is risky
 - TCP connection can be reset
 - Segments can be cached (symptomatic of Snoop)
- Middleboxes that understand deployed options don't understand options in the extended option space
 - Forget modifying SACKs in the extended option space
- We cannot use TCP Segmentation Offload (TSO)
 - They copies the option to all the split segments
 - Copying the option that specifies actual data offset to regular segments!

Option 2 (reuse TIMESTAMP) might be Good

- We observed three types of middlebox behavior
 - Pass TS
 - Removes TS
 - Doesn't reply to TS, but uses TS at the server side independently
- draft-scheffenegger-tcpm-timestamp-negotiation-03
 - How strange is it from the middlebox view?
 - TSecr in the SYN
 - Incredibly distant TS values
 - Different TSecr from the TSval

Please Contribute to the Next Tests!

- **Is the extended option space in **TIMESTAMP** safe?**
- We will announce the second call for contributions on middlebox measurements at the end of this IETF meeting
 - I'm now implementing tests for extended option space in **TIMESTAMP**!
 - We also added some tests (e.g., SYN with payload)
- Please run a self-contained tool for 15 min experiments!
- <http://web.sfc.wide.ad.jp/~micchie/middlebox/cfc.html>