

# PCP Server Discovery in IPv6 Multihoming

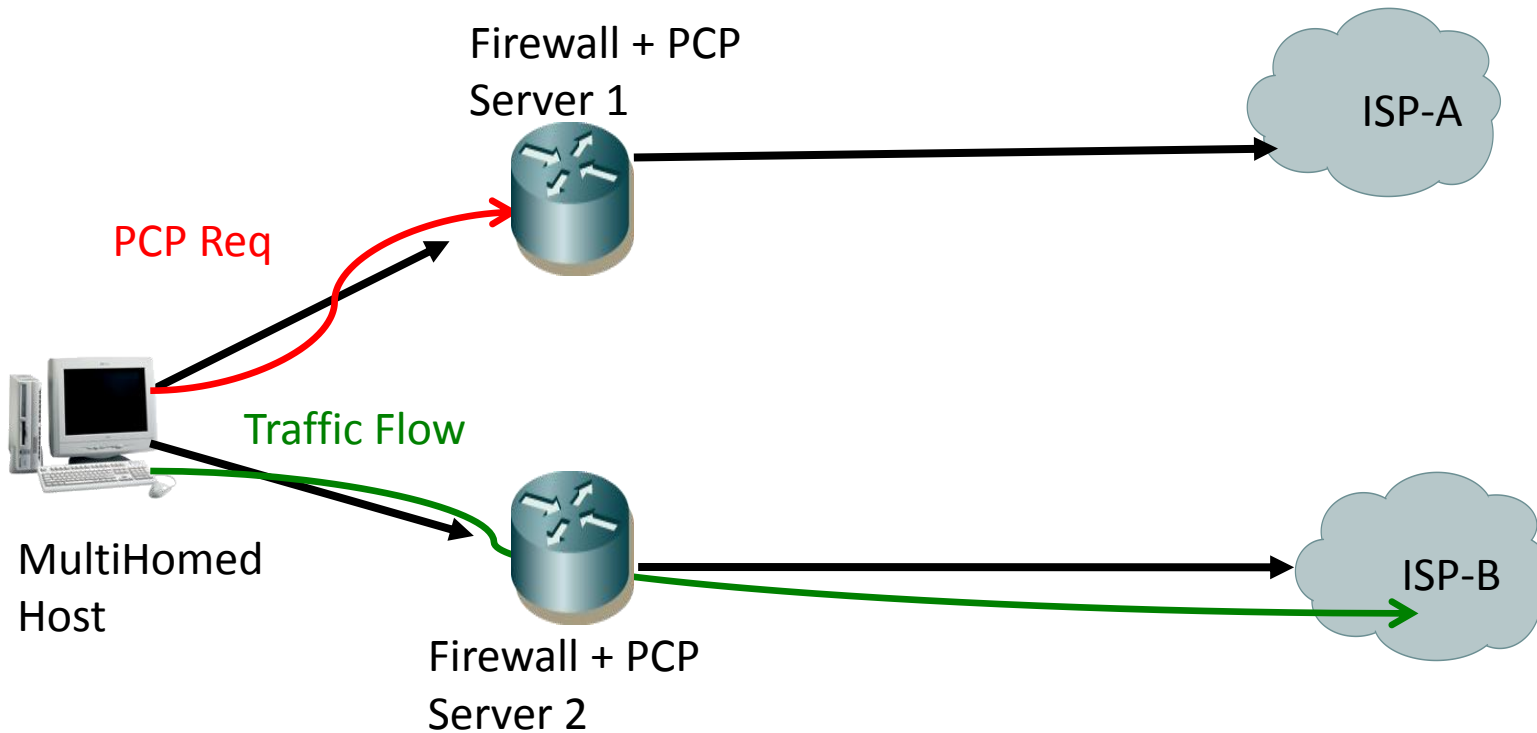
draft-reddy-pcp-server-discovery

IETF84

August 2012

Authors: T. Reddy, P. Patil, D.Wing, F.Baker

# PCP broken with Multi-Homing



## GOAL

- Discover all PCP servers in a Multihoming environment e.g., there may be a PCP server integrated into every firewall device connecting to each network.
- Not yet achievable.

## MECHANISM

- PCP client sends a PCP DISCOVER request to a multicast group.
- Each PCP server responds to the PCP DISCOVER request.
- PCP client sends regular unicast PCP request messages (e.g., PEER or MAP OpCodes) to each discovered PCP server.

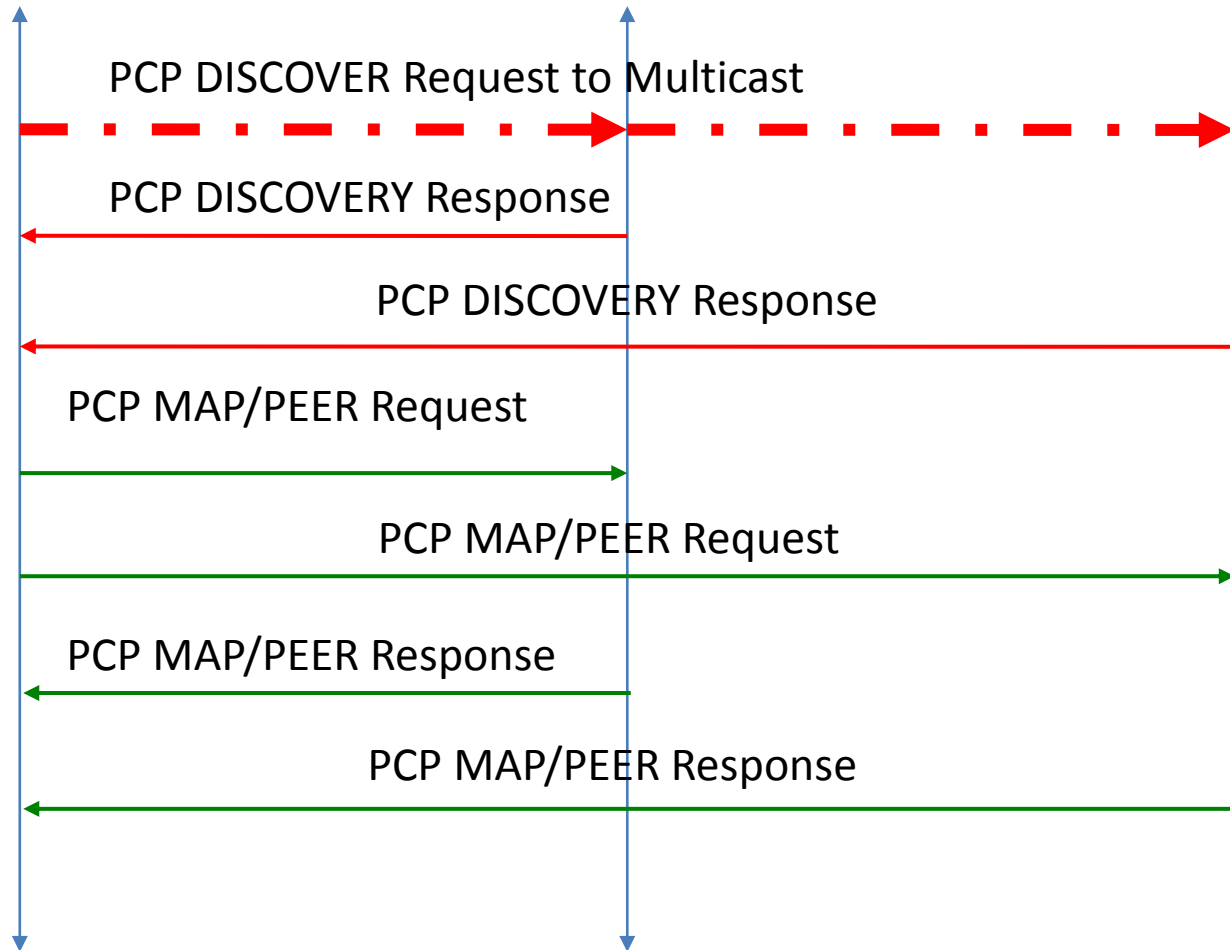
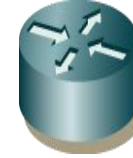
PCP Client



PCP Server-1



PCP Server-2



# Or ...

- Use Naming and Service Discovery from HOMENET ?