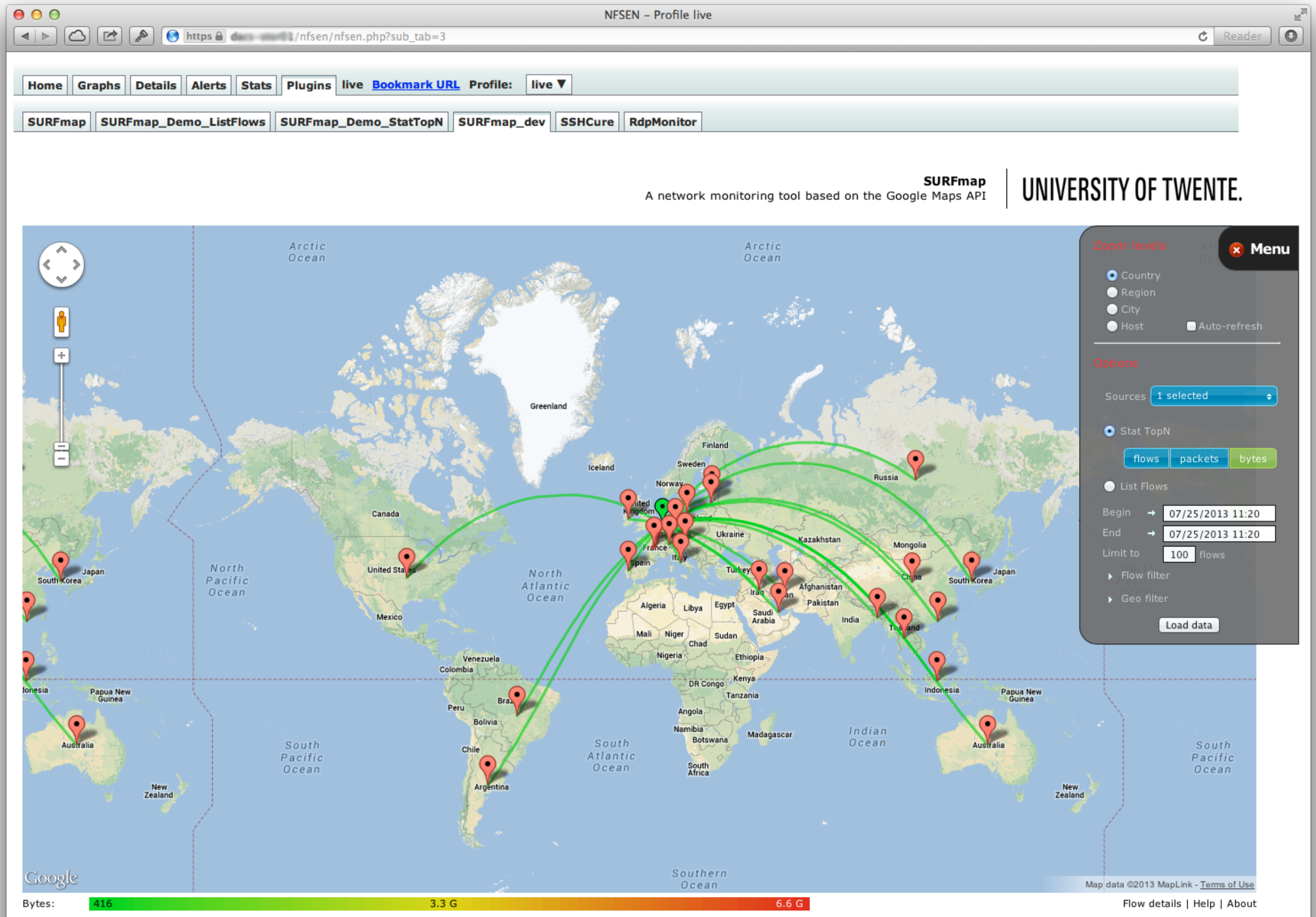


IPFIX Metering Process Location in SURFmap

Rick Hofstede, Abdelkader Lahmadi

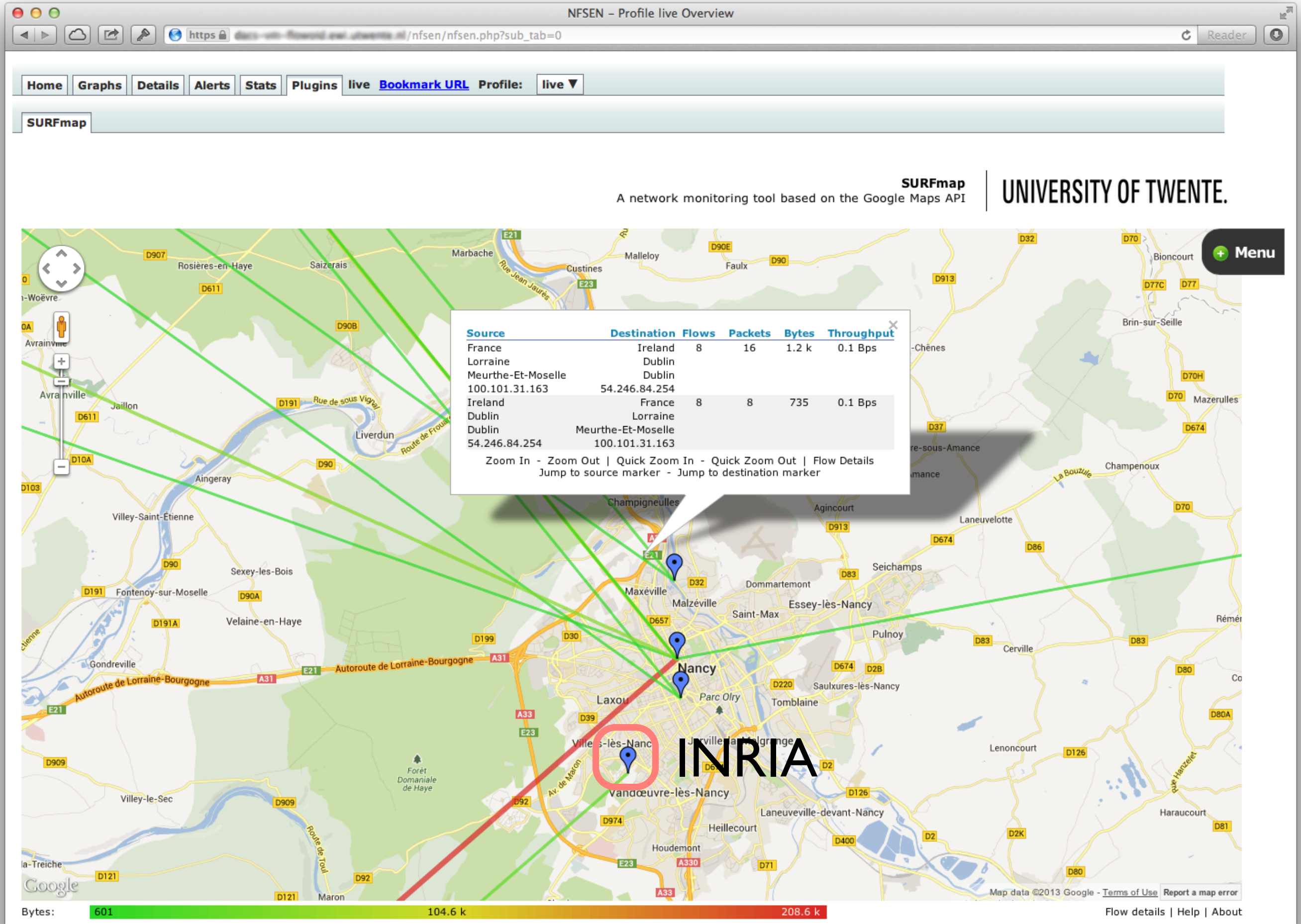
Introduction

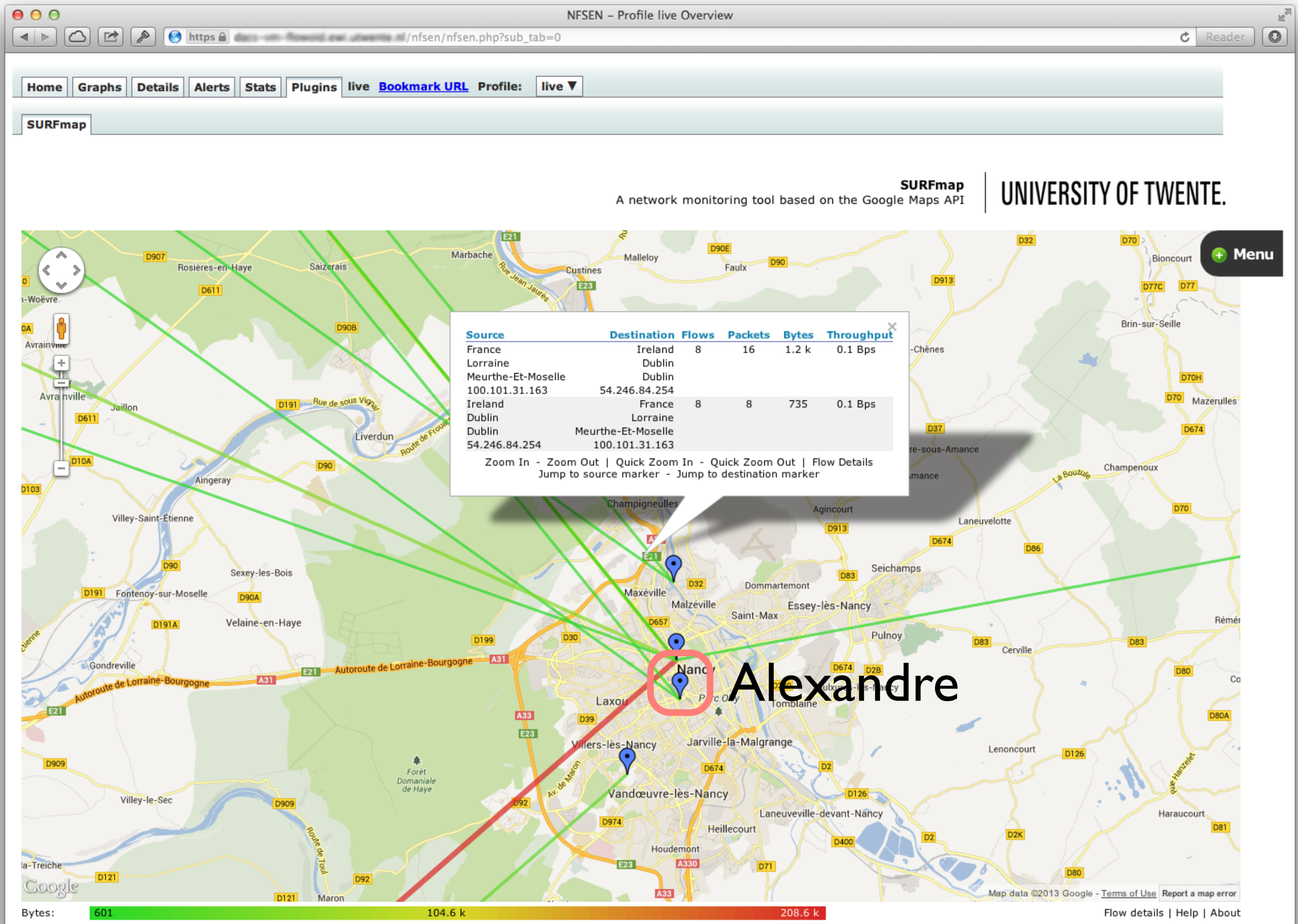
- Goal: Create a network monitoring tool that shows NetFlow data, which could be used by anybody
- Google Maps turned out to be a suitable platform
- Development started in 2008, published in 2009 (IM 2009), 5000 downloads (July 2013)
- Full-fledged NfSen plugin, with support for profiles, channels, etc.

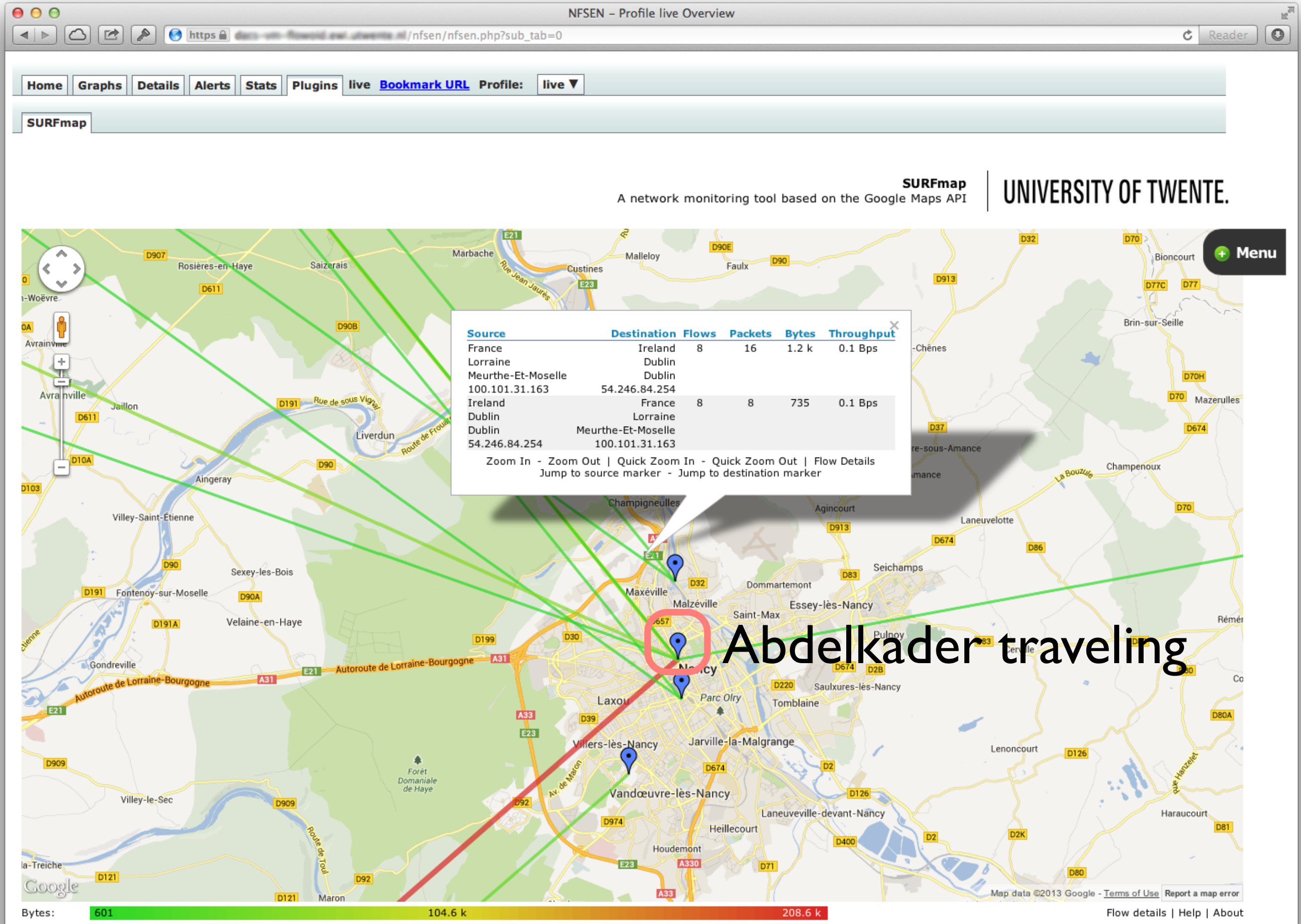


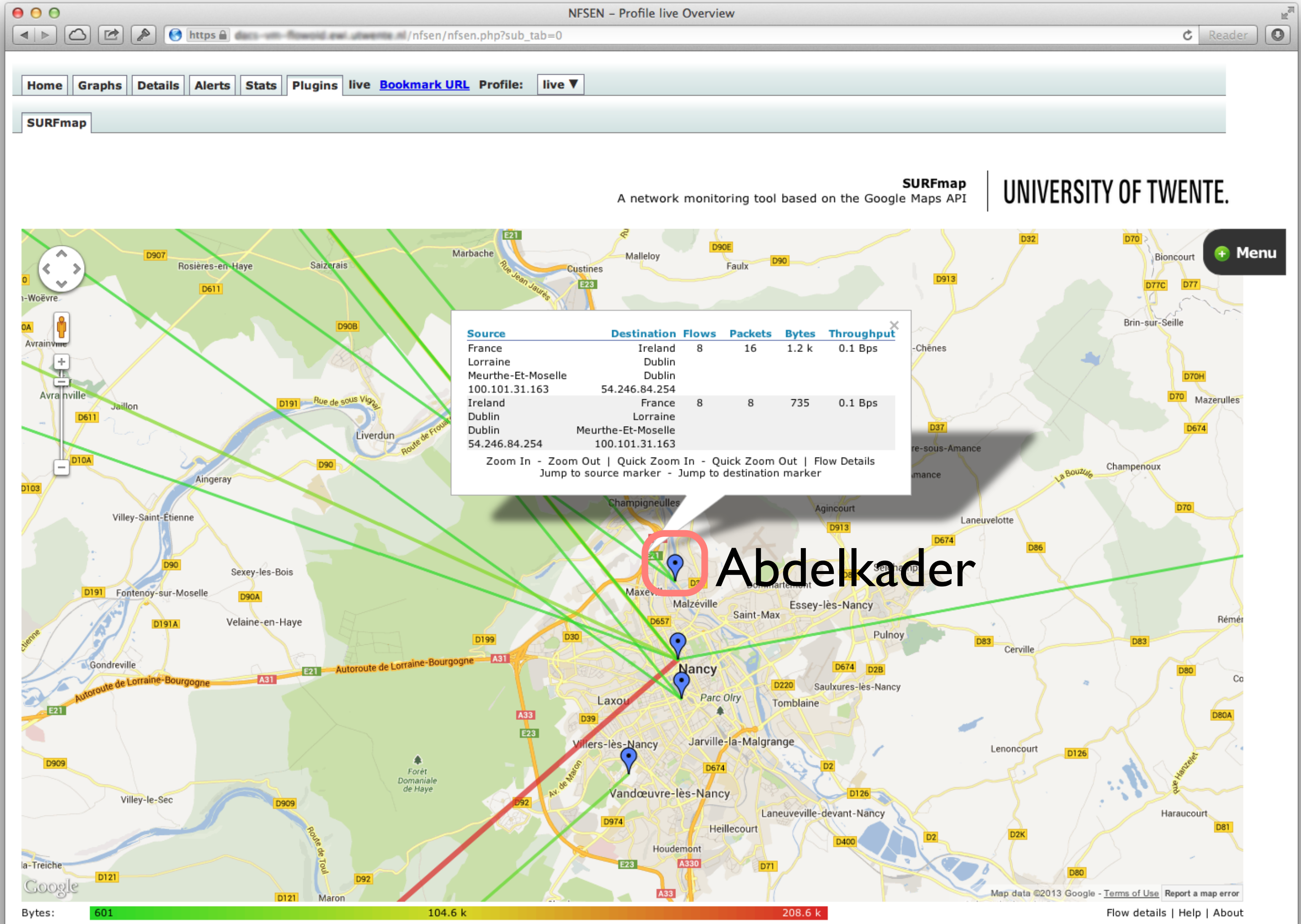
Geolocation

- Data is aggregated into SURFmap zoom levels: country, region, city & host
 - Country, region & city information is provided by geolocation databases (e.g. MaxMind, IP2Location)
 - Host information is missing
- Having MP locations exported bridges the gap of missing host locations









Questions?

SURFmap is available at
<< surfmap.sf.net >>