

Illustrations about CoRE authorization

Carsten Bormann, 2013-07-31
(stealing slides from Stefanie Gerdes)

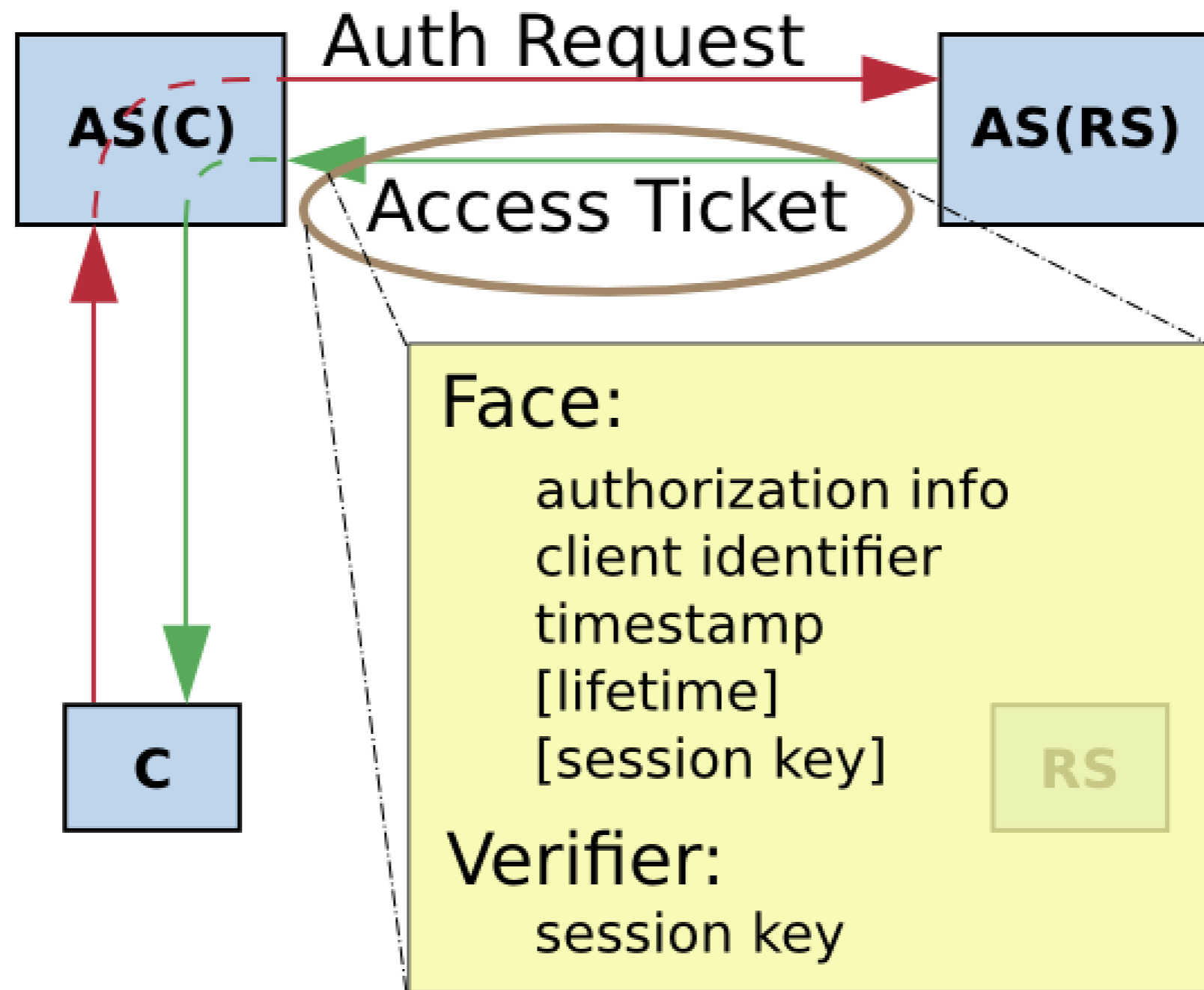
CoRE

- Constrained RESTful Environments
- **CoAP**: Like HTTP, just much simpler
 - less baggage, fewer features
 - compact binary, not text

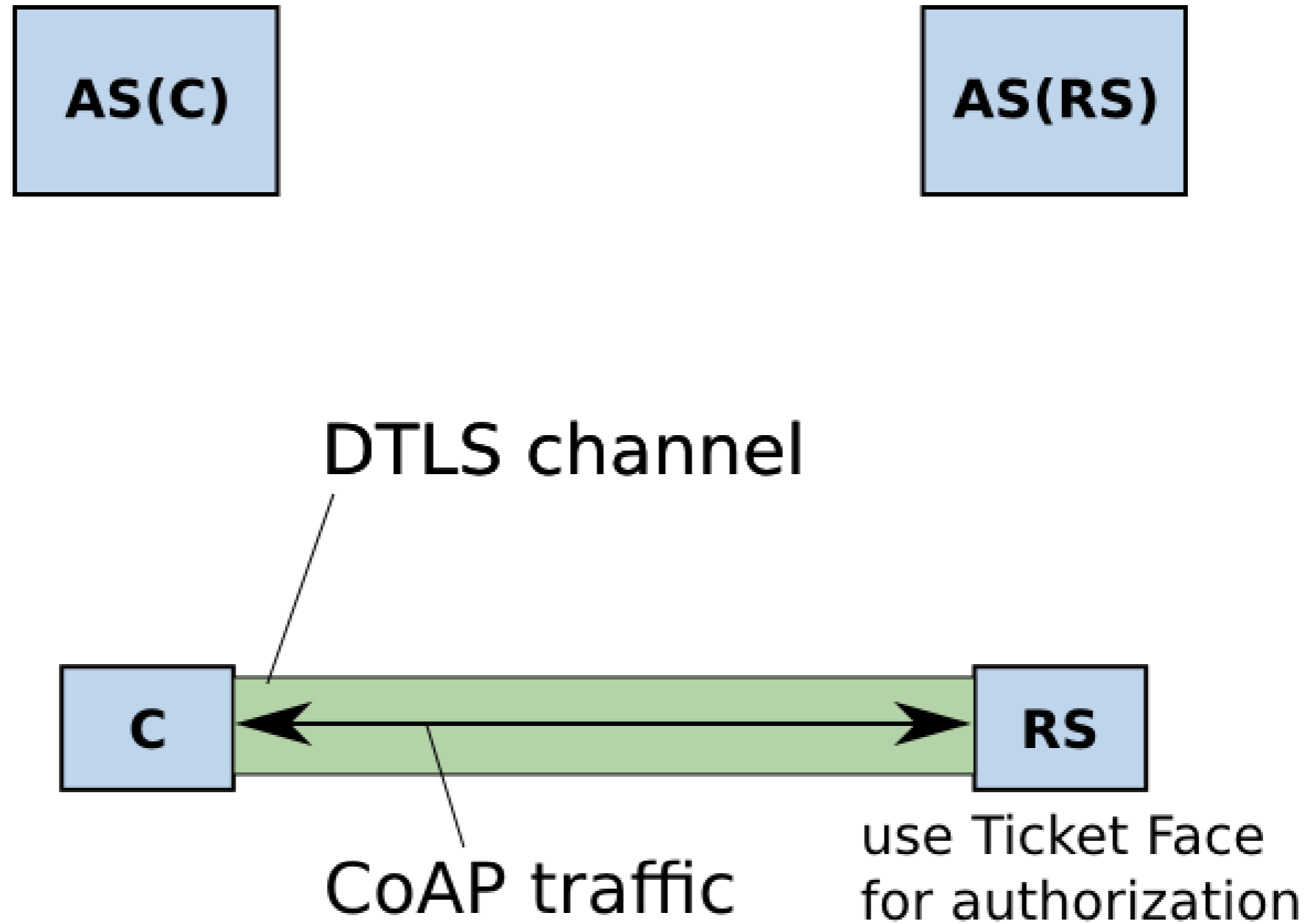
CoRE

- Embedded Environments
 - no or minimal UI (single LED)
 - lots of devices
- Requirements are not identical to laptop/
smartphone space

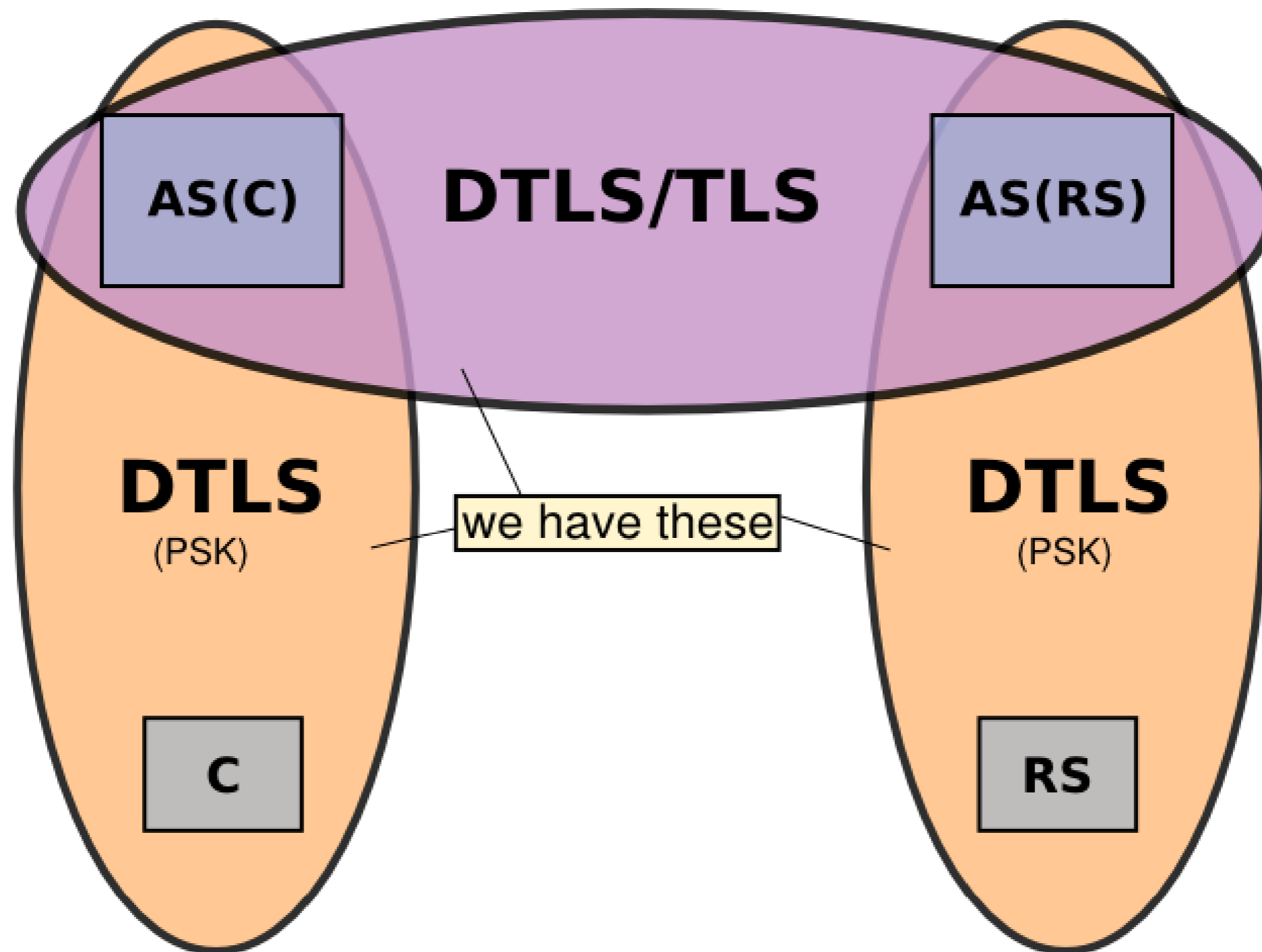
Access Ticket



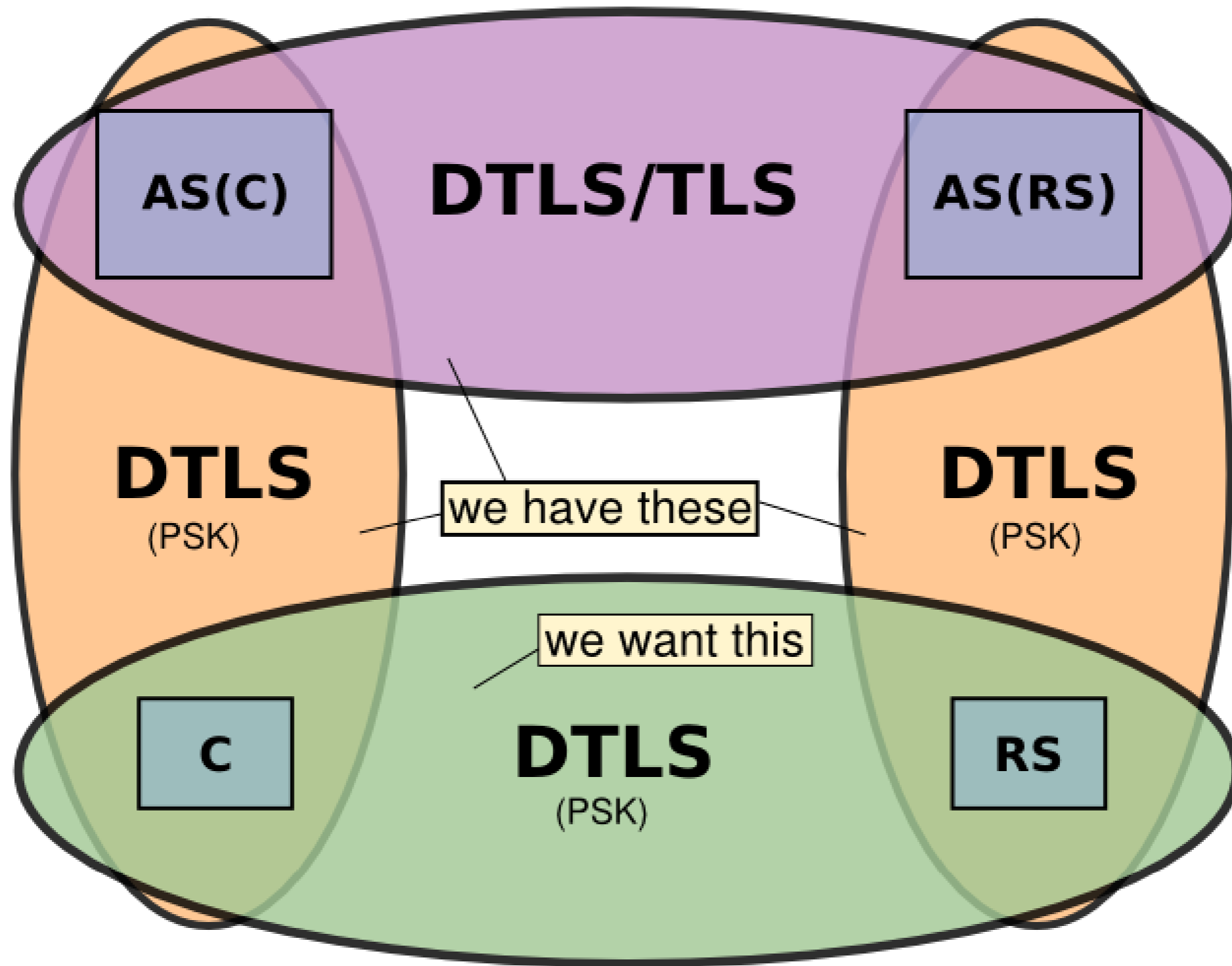
RS Permits Authorized Requests Over DTLS



Initial Trust Relationships



Trust: The Complete Picture



Roles

