

LISP-SDN-00

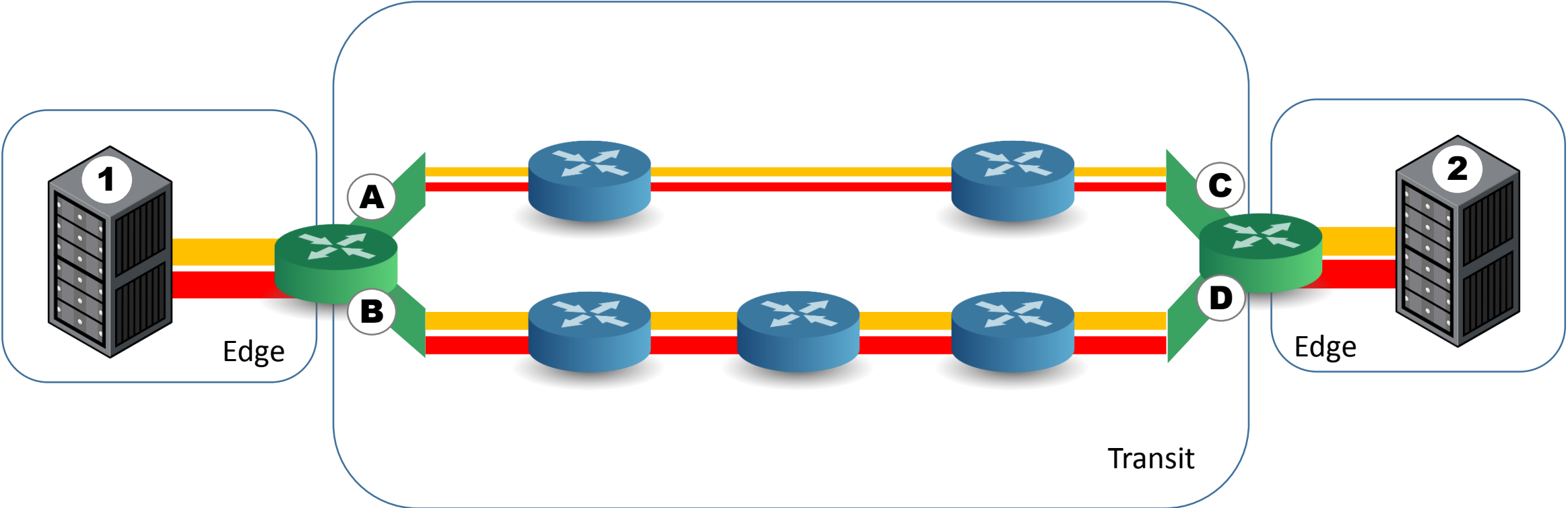
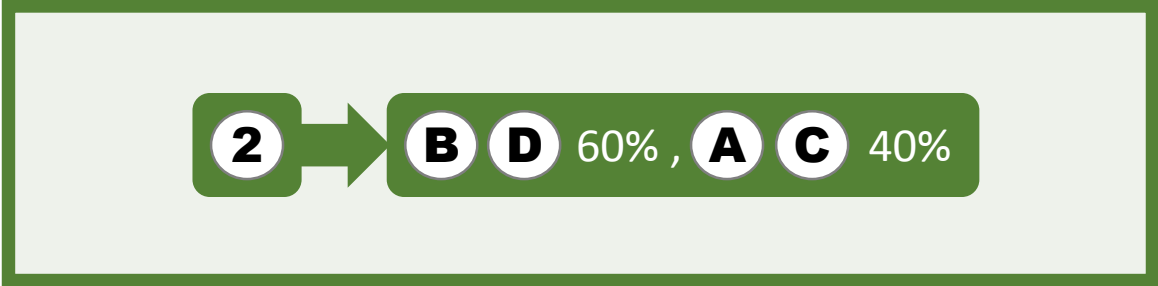
Software Defined Networking extensions for the Locator/ID Separation Protocol

Alberto Rodriguez-Natal, Albert Cabellos-Aparicio, S. Barkai,
V. Ermagan, D. Lewis, F. Maino, D. Farinacci

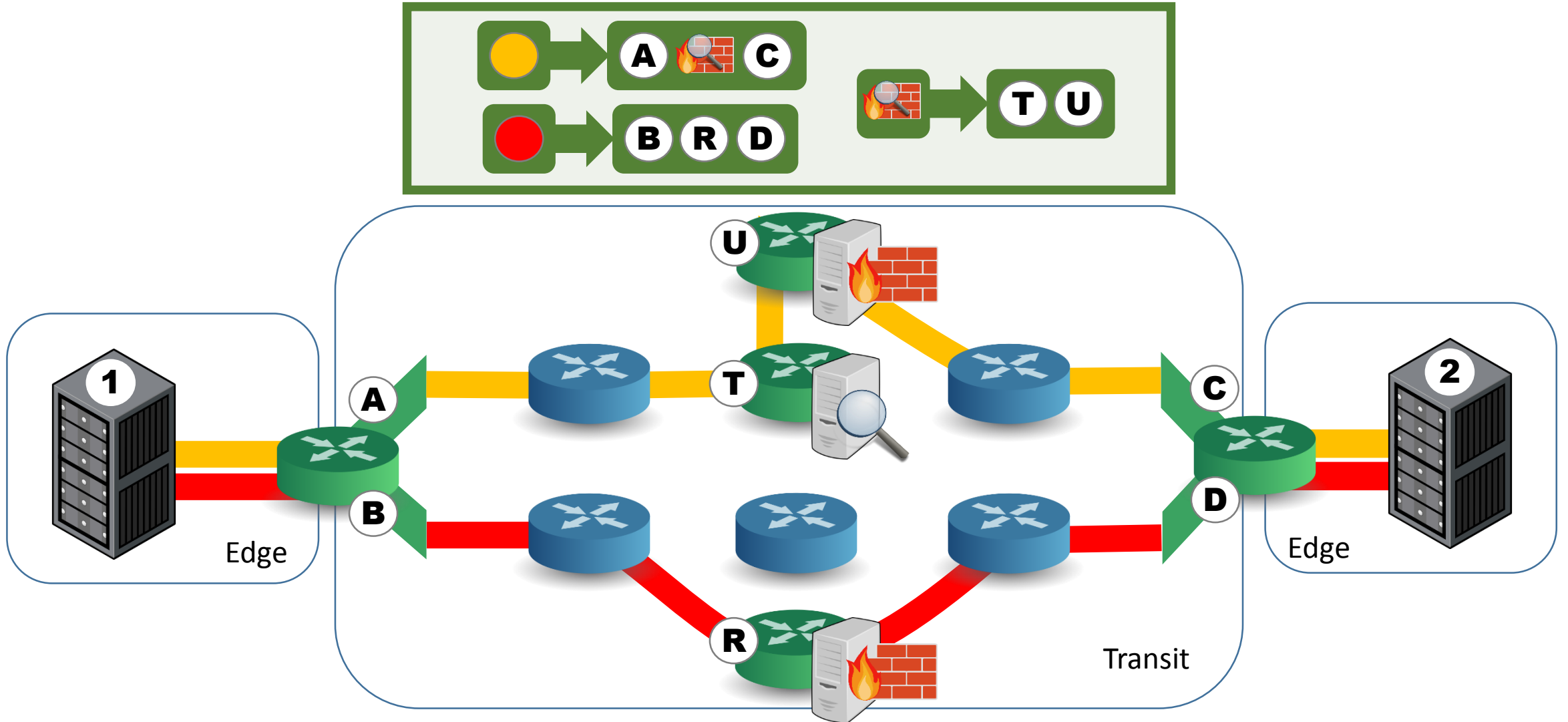
Presenter: Albert Cabellos

acabello@ac.upc.edu

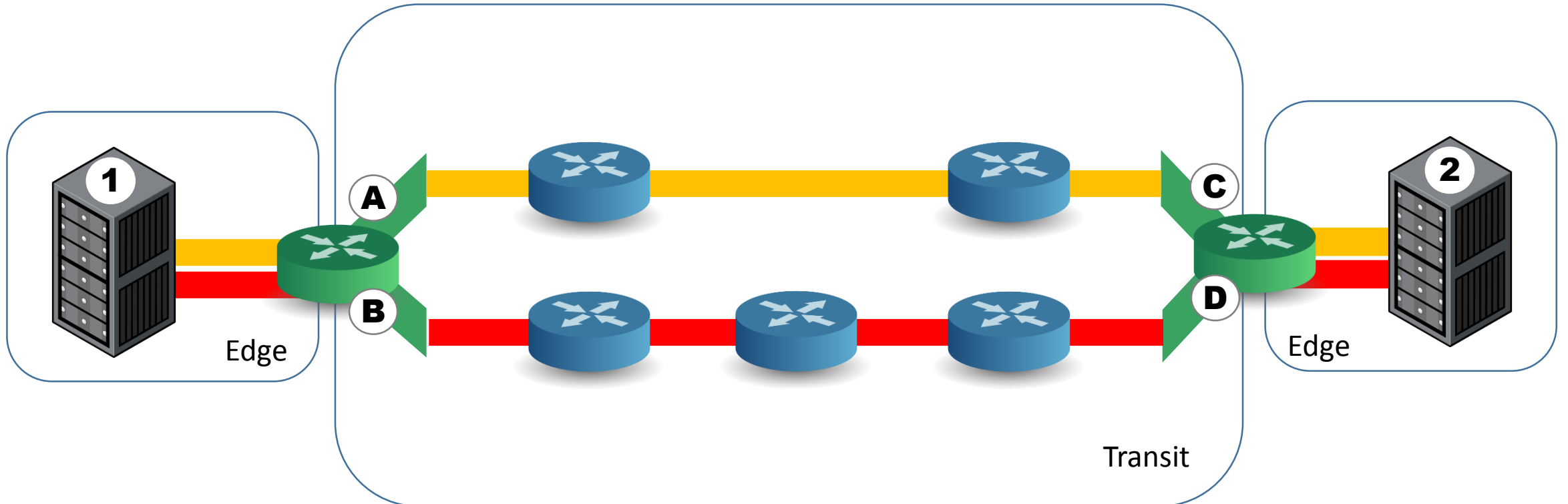
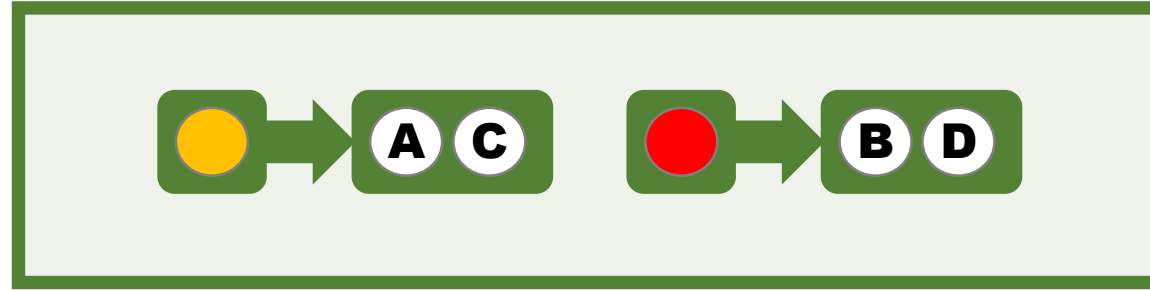
LISP



LISP-SDN: Vision



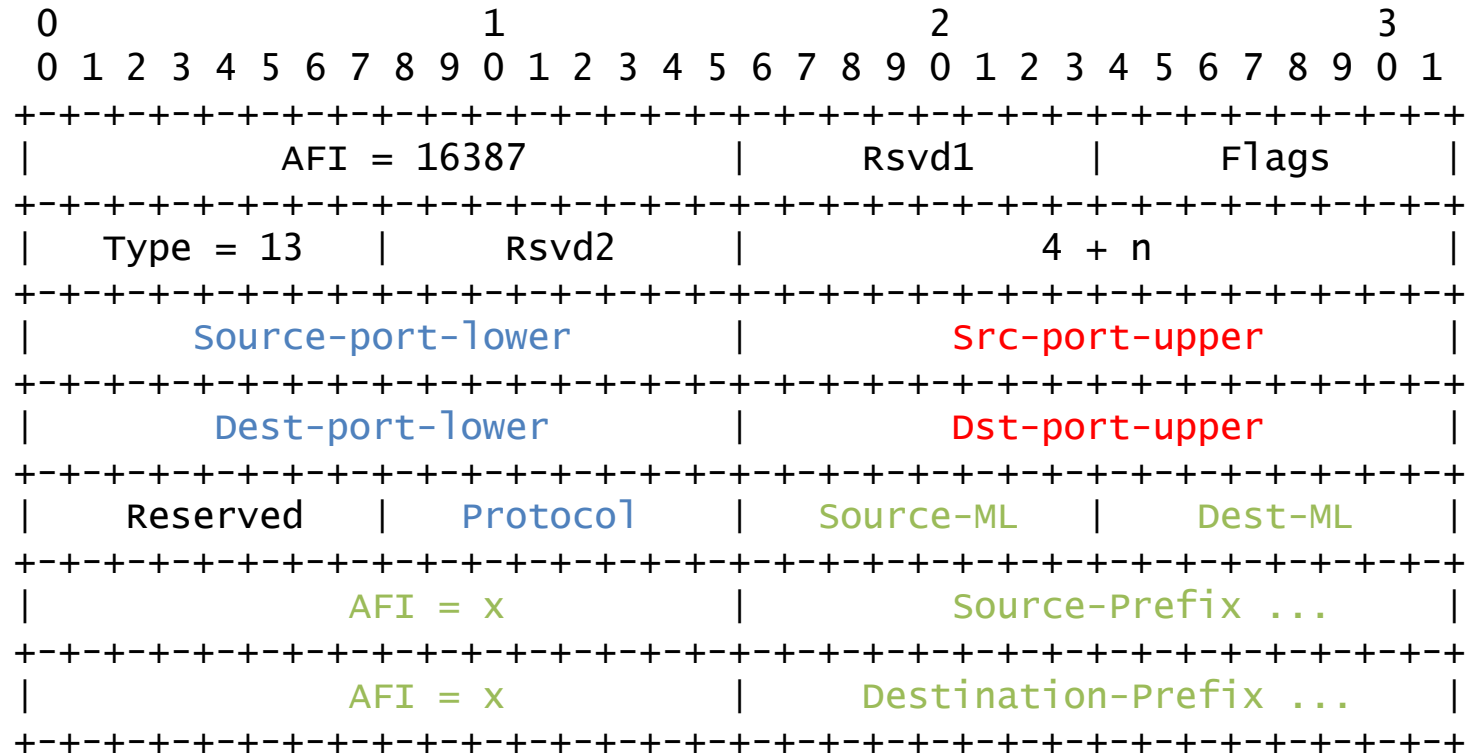
LISP SDN: Flow Mappings



Flow based mappings

- Tuple exact match
 - DHT-based Mapping System
- Tuple best match
 - Ongoing discussion
 - Map-Reduce?
- 5-tuple LCAF
 - LCAF type 4 + 12
- Prototype implemented with LISPmob
 - <https://github.com/arnatal/lispmob/tree/lispflow>

5-tuple LCAF



Blue - from type 4
 Green - from type 12

Future Versions

- Flow Mappings
 - N-Tuple Lookup
 - Openflow Lookup?
- Advanced Mapping Updates
 - Publish/Subscribe mechanism
 - Devices notified of changes on their subscribed mappings
 - Proactive mapping updates
 - Push new mapping information